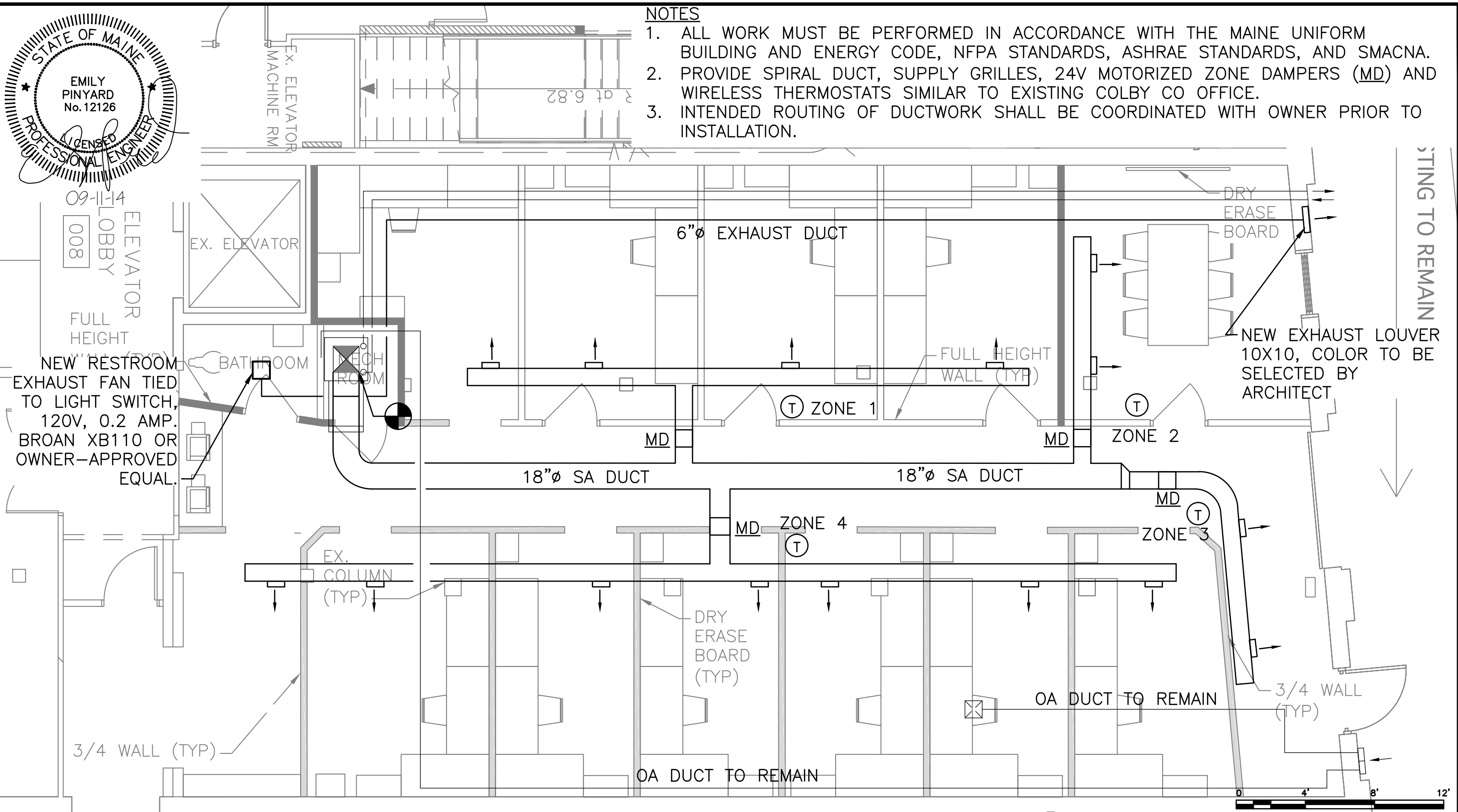


NOTES

1. ALL WORK MUST BE PERFORMED IN ACCORDANCE WITH THE MAINE UNIFORM BUILDING AND ENERGY CODE, NFPA STANDARDS, ASHRAE STANDARDS, AND SMACNA.
2. PROVIDE SPIRAL DUCT, SUPPLY GRILLES, 24V MOTORIZED ZONE DAMPERS (MD) AND WIRELESS THERMOSTATS SIMILAR TO EXISTING COLBY CO OFFICE.
3. INTENDED ROUTING OF DUCTWORK SHALL BE COORDINATED WITH OWNER PRIOR TO INSTALLATION.



09-11-14
008
LOBBY
ELEVATOR
FULL HEIGHT
NEW RESTROOM
EXHAUST FAN TIED TO LIGHT SWITCH, 120V, 0.2 AMP. BROAN XB110 OR OWNER-APPROVED EQUAL.

SCALE: 3/16" = 1'-0"



MECHANICAL PLAN - NEW
SCALE: 3/16" = 1'-0"

COLBY COMPANY ENGINEERING 47A YORK STREET, PORTLAND, ME			
OFFICE EXPANSION 45 YORK STREET			
MECHANICAL PLAN - NEW			
0	ISSUE FOR PERMIT	CSS	ERP
REV	DESCRIPTION	DWN BY	APP BY
		DATE	DATE

PLEASE NOTE: THIS DOCUMENT MAY NOT ACCURATELY REPRESENT THE FINAL DOCUMENT. ONLY AN ENGINEER, ARCHITECT OR SURVEYOR SIGNED, SEALED AND DATED PAPER COPY, PROVIDED BY THIS OFFICE, MAY BE UTILIZED FOR BIDDING OR CONSTRUCTION PURPOSES.

47A York Street
Portland, Maine 04101
207.553.7753
colbycoengineering.com

SIZE: AS NOTED
DATE: 9/11/2014
DES BY: ERP
DWN BY: CSS
CKD BY: CBC

PROJECT NO.
1.006.001
SHEET
X OF X

DRAWING NO.
M-101