

LIST OF APPLICABLE CODES:

| | |
|--|--|
| 2009 INTERNATIONAL BUILDING CODE (IBC) | 2009 INTERNATIONAL EXISTING BUILDING CODE (IEBC) |
| 2011 NATIONAL ELECTRICAL CODE (NEC) | |

FIRE/LIFE SAFETY CODE AS ADOPTED BY THE STATE OF MAINE, INCLUDING BUT NOT LIMITED TO:

| | |
|--|---|
| 2009 NFPA 101: LIFE SAFETY CODE | 2007 NFPA 13: INSTALLATION OF SPRINKLER SYSTEMS, [2010 EDITION THROUGH EQUIVALENCY] |
| 2010 ADA STANDARDS FOR ACCESSIBLE DESIGN | |

NOTE: ALL CODES SHALL INCLUDE CHANGES/AMENDMENTS BY THE STATE OF MAINE

| | | |
|------------------------------|------------------|----------|
| EXISTING BUILDING: | RENOVATED SPACE: | 800 SF |
| OUT OF SCOPE OF WORK: | | 6,232 SF |

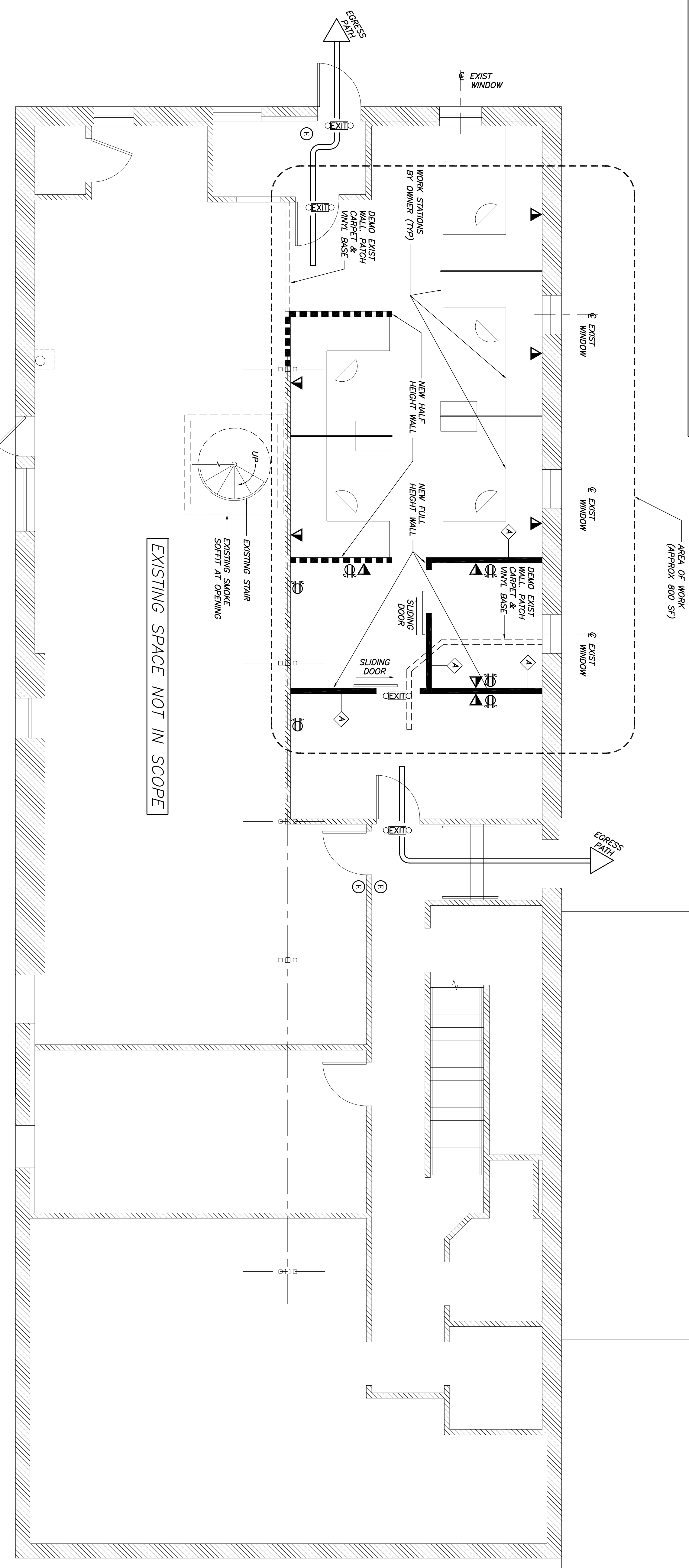
| | | |
|---|---|--|
| BUILDING USE: | NEPA 2009 | IBC 2009 |
| 1. BUILDING CLASSIFICATION BY OCCUPANCY: | EXISTING BUSINESS | OCCUPANCY CLASSIFICATION BUSINESS GROUP B, SECTION 304.1 |
| 2. CONSTRUCTION TYPE: | 39.1.1 | UNDER ONE STORY IN HEIGHT SPRINKLERED PER NFPA 13 TYPE IIA |
| 3. OCCUPANCY LOAD: | TABLE 7.3.1.2 BUSINESS USE 100 SF PER OCCUPANT | TABLE 1004.1.1 100 GROSS SF PER OCCUPANT |
| 4. OCCUPANT CALCULATIONS: | 800 SF/100 = 8 OCCUPANTS | 800 SF/100 = 8 OCCUPANTS |
| 5. UNIT OF EXIT WIDTH: | TABLE 7.3.3.1 OCCUPANTS RAO.2=1.6" 72" PROVIDED | TABLE 1005.1 OCCUPANTS RAO.15=1.2" 72" PROVIDED |

NEPA SUMMARY:

| | | |
|---------------|----------------------------------|---|
| NEPA 2009 101 | OCCUPANCY: | EXISTING BUILDING |
| 39.1.1 | OCCUPANT LOAD: | 8 PEOPLE |
| 39.1.7 | MEANS OF EGRESS: | 2 EXITS OUT OF EACH SPACE OR ONE DIRECT AND SEPARATE EXIT OUT OF EACH SPACE |
| 39.2 | TRAVEL DISTANCE TO EXITS: | NOT TO EXCEED 300' IN A BUILDING PROTECTED BY A SPRINKLER SYSTEM 39.2.6.1 |
| 39.2.6 | ILLUMINATION OF MEANS OF EGRESS: | PROVIDE ILLUMINATED EXIT SIGNS |
| 39.2.8 | DETECTION AND ALARM: | NOT REQUIRED |
| 39.3.4 | | |

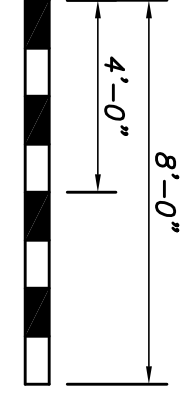
LEGEND

- NEW WALL
- NEW HALF WALL
- EXISTING WALL
- DEMO WALL
- ▽ TEL DATA DUAL JACK
- ⊕ DUAL RECEPTACLE 20A, 150V (⊕ INDICATES DUPLICATION)
- ⊕ FIRE EXTINGUISHER - WALL MTD
- ⊕ ILLUMINATED EXIT SIGN W/BATTERY POWERED EMERGENCY LIGHTS
- ⊕ 5/8" TYPE X PTD GWB AT EA SIDE 2x4 STUDS @ 16" O.C. SOUND ATT BATS EXTEND TO TOP OF STUDS AND PENETRATION. FIRE SEAL ALL PENETRATIONS. 1 HOUR FIRE RATED ULQ375



EXISTING LOWER LEVEL FLOOR PLAN
1/4"=1'-0"

- NOTES:**
1. DEMOLISH EXISTING PARTITION WALLS AND PATCH CARPET & VINYL BASE.
 2. BUILD HALF HEIGHT WALLS AS SHOWN W/2x4 @16" O.C. W/5/8" TYPE X.
 3. BLD FULL HEIGHT WALLS W/2x4 @16" O.C. W/5/8" TYPE X GWB ON BA FACE. PROVIDE 1x2 PAINTED BASE.
 4. SLIDING DOORS SHOWN SHALL BE 3'-0"x7'-0" SITE BUILT W/BARN DOOR* STYLE HARDWARE.



GRAPHICAL SCALE
1/4"=1'-0"

| | | | |
|--------|----------|-------------------|------|
| Rev No | Date | Issued For | Appr |
| | 11/21/13 | ISSUED FOR PERMIT | X |

Becker Structural Engineers, Inc.
75 York Street, Portland, Me.

Interior Renovation Plan

| | |
|----------|-------------------|
| Designed | Scale |
| PBB | NOTED |
| Drawn | Date |
| App | 11/21/13 |
| Checked | Becker Job Number |
| PBB | 1030 |