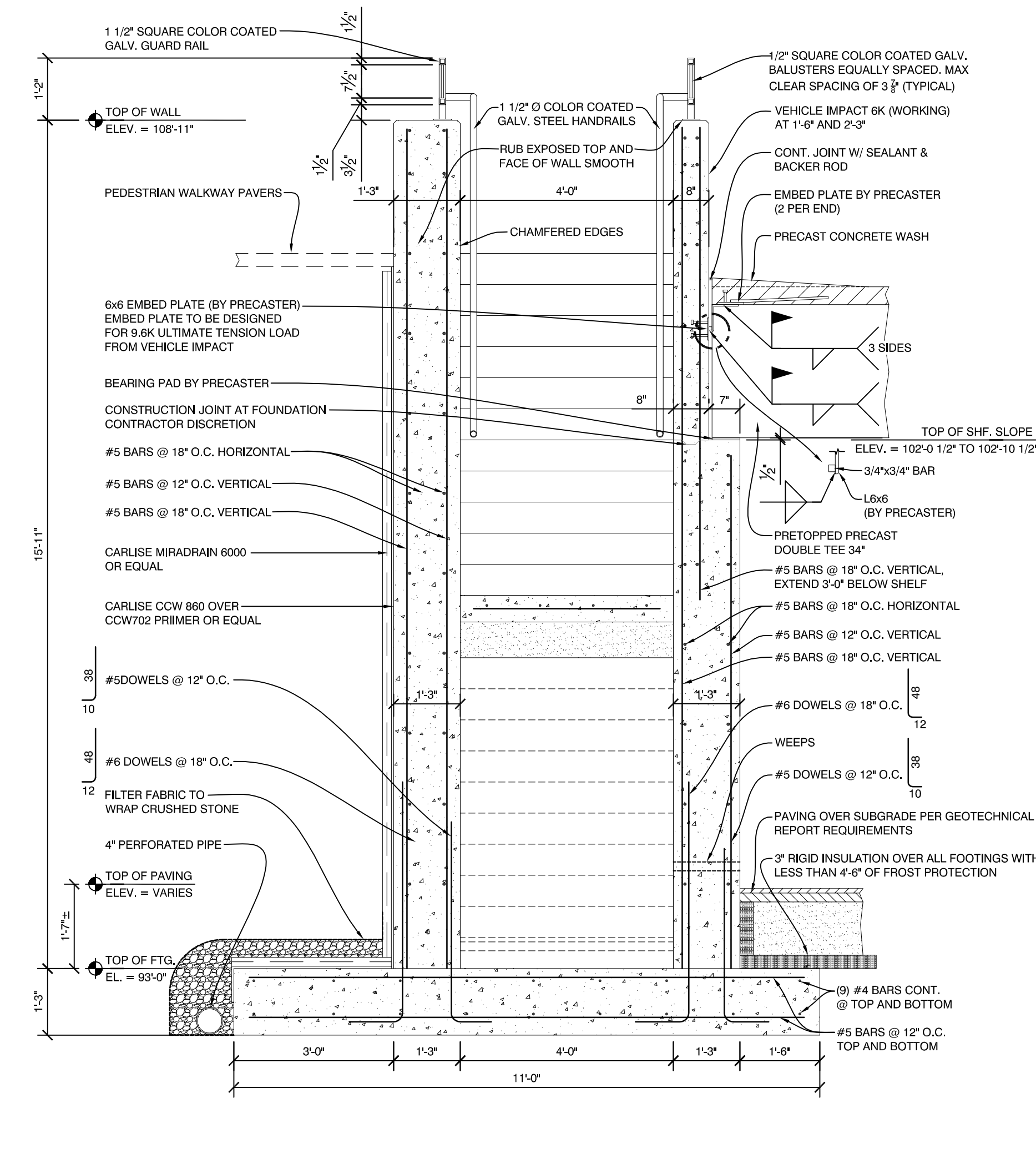
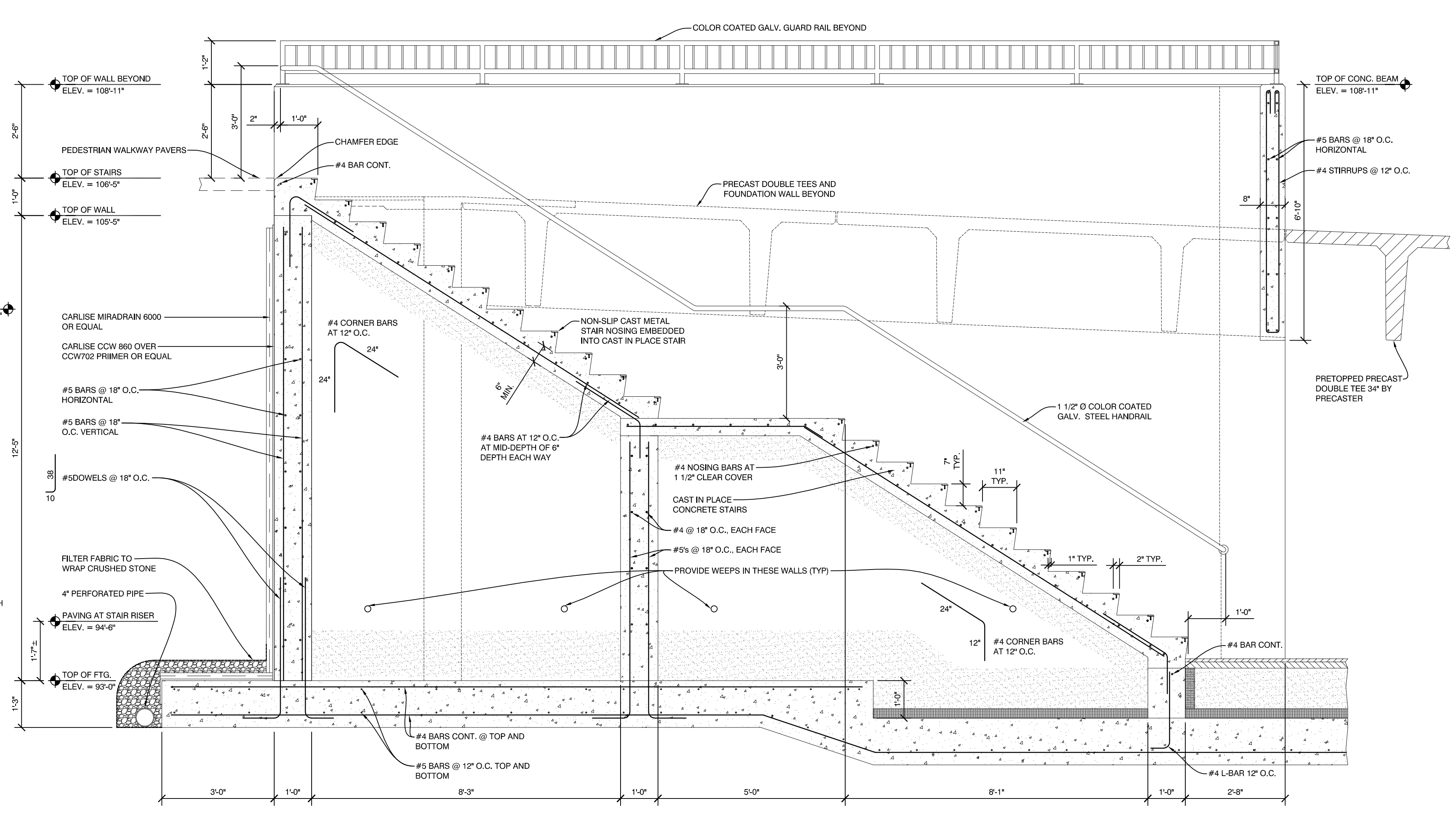


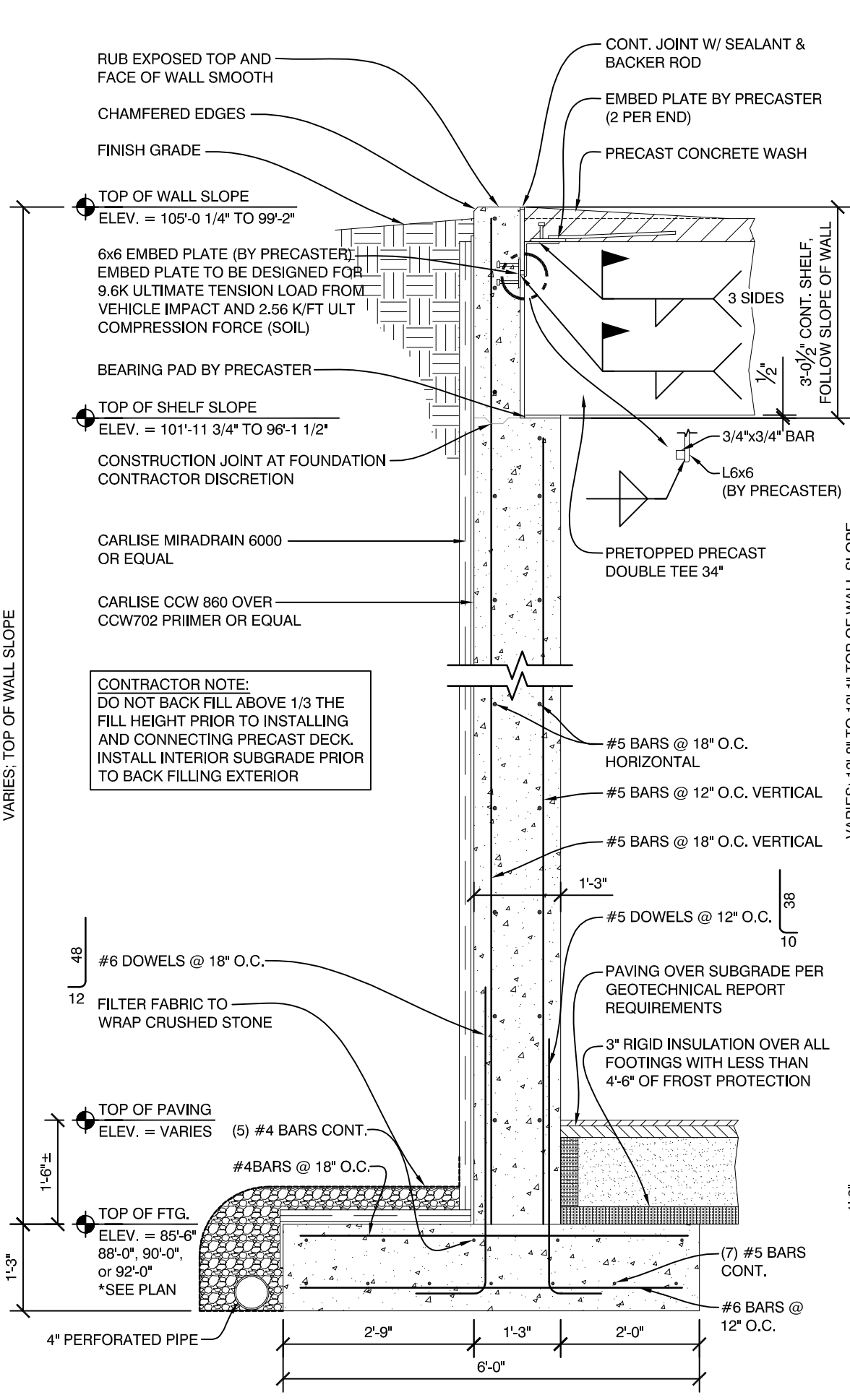
Thursday, March 24, 2016 1:26:10 PM



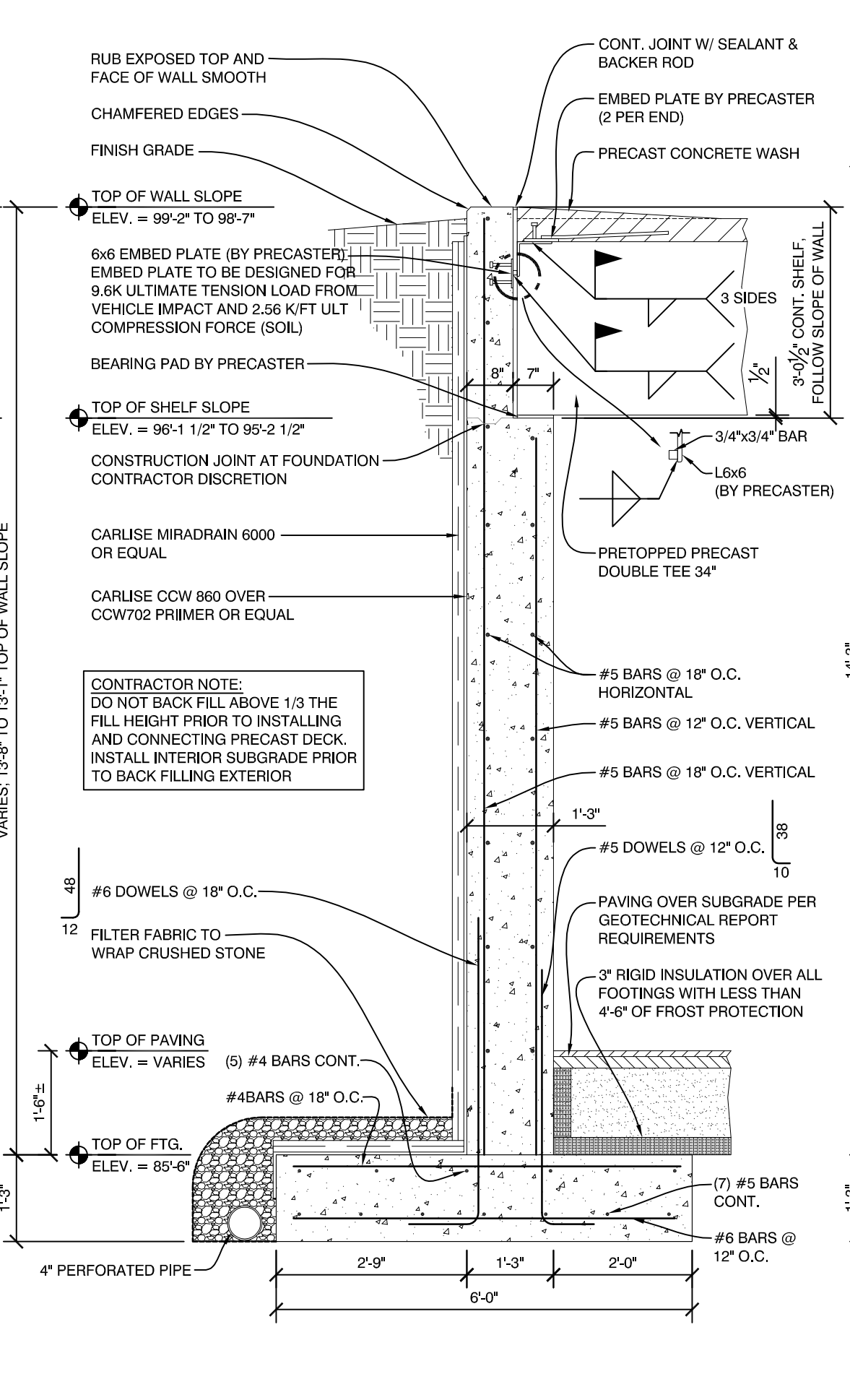
**7** PRECAST DOUBLE TEE BEARING AT CAST IN PLACE STAIR  
1/2" = 1'-0"



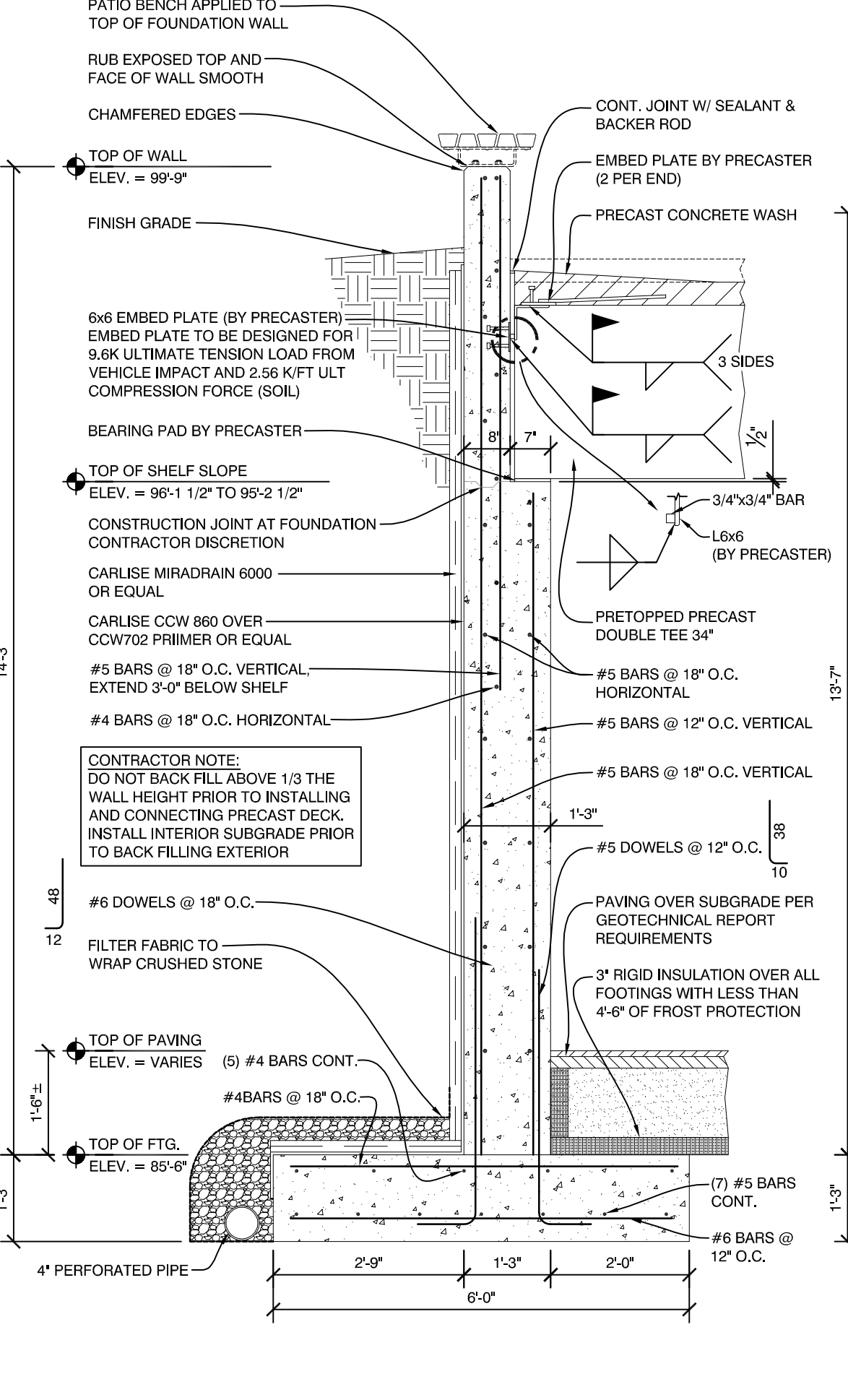
**6** PRECAST DOUBLE TEE BEARING AT CAST IN PLACE STAIR  
1/2" = 1'-0"



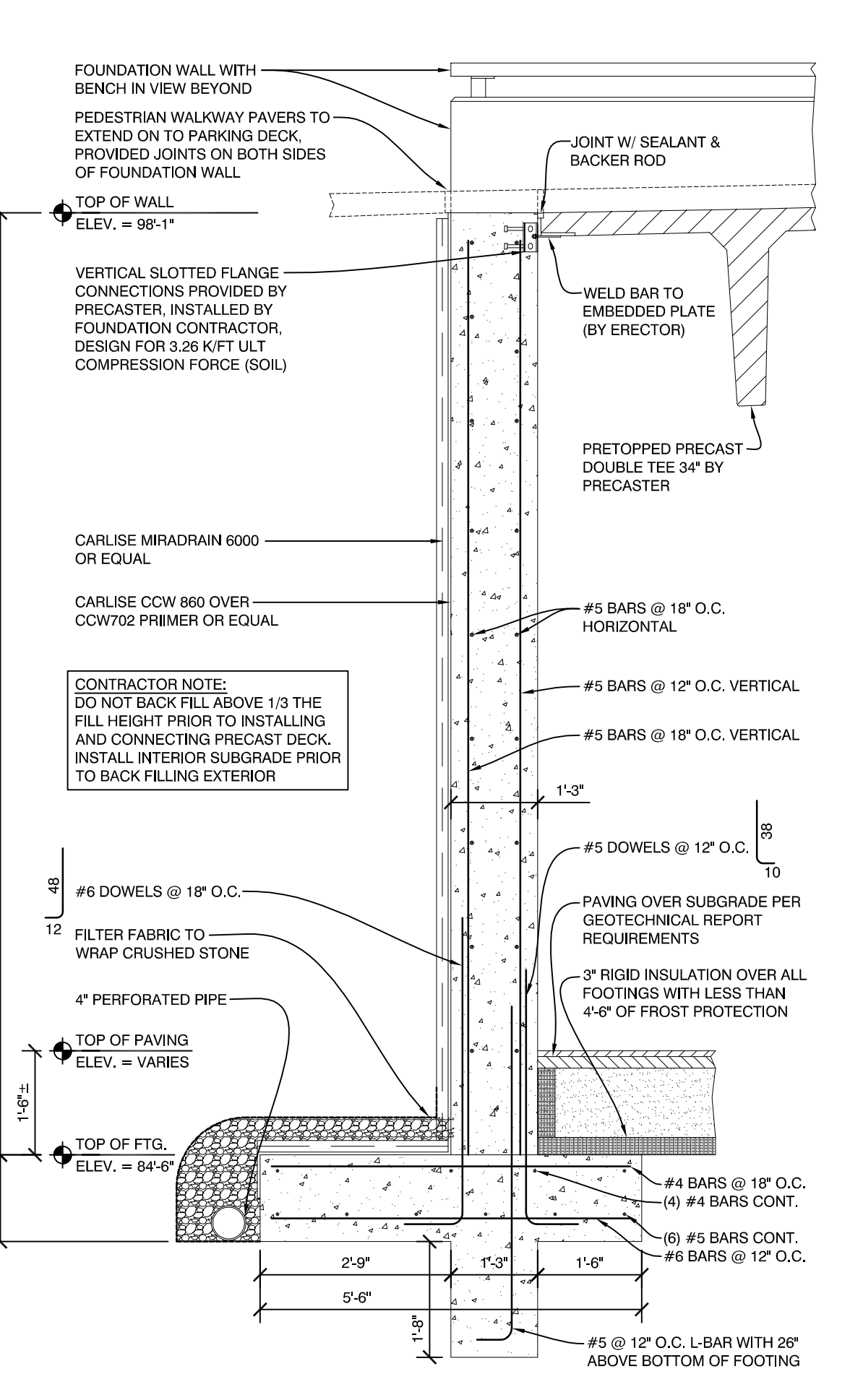
**5** PRECAST DOUBLE TEE BEARING AT RETAINING WALL  
1/2" = 1'-0"



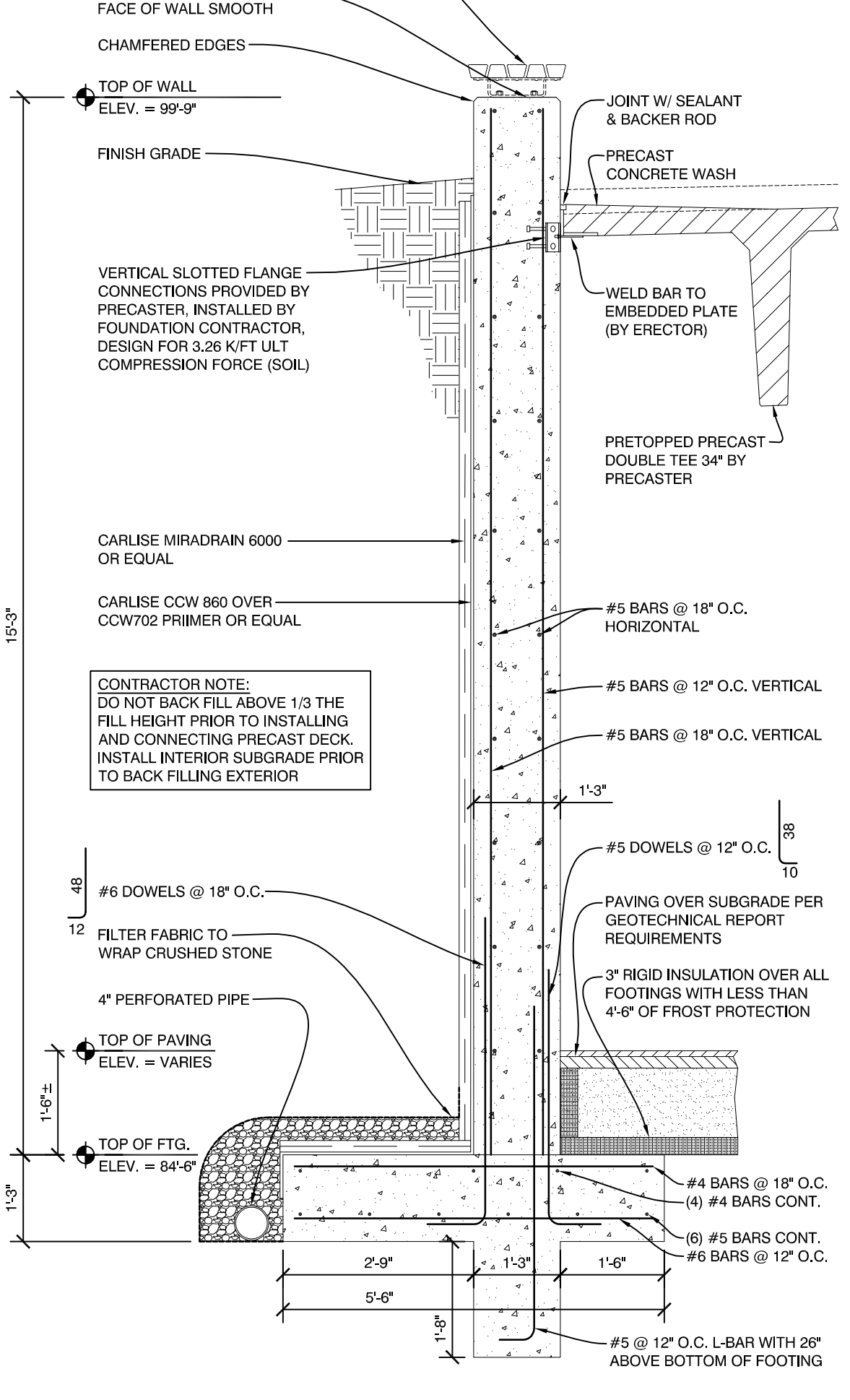
**4** PRECAST DOUBLE TEE BEARING AT RETAINING WALL  
1/2" = 1'-0"



**3** PRECAST DOUBLE TEE BEARING AT RETAINING WALL  
1/2" = 1'-0"



**2** PRECAST DOUBLE TEE EDGE AT RETAINING WALL  
1/2" = 1'-0"



**1** PRECAST DOUBLE TEE EDGE AT RETAINING WALL  
1/2" = 1'-0"



**Mixed Use Development**  
 York & High Street  
 Portland, Maine

**REVISION:**  
 PER BSE FEB. 1 & 3 COMMENTS 02/04/16  
 WIDTH OF CONCRETE BEAM AT STAIRS 02/15/16  
 PER BSE FEB. 22ND COMMENTS 02/24/16  
 03/18/16 BSE CONSTRUCTION MARKUPS

**ISSUED:**  
 FOR STRUCTURAL REVIEW 11/12/15  
 FOR STRUCTURAL REVIEW 12/09/15  
 FOR BUILDING PERMIT 02/26/16  
 03/24/16 FOR CONSTRUCTION PER BSE

project architect: KAK  
 drawn by: JUD  
**PARKING GARAGE FDN. DETAILS**

sheet number:  
**GS2.02**