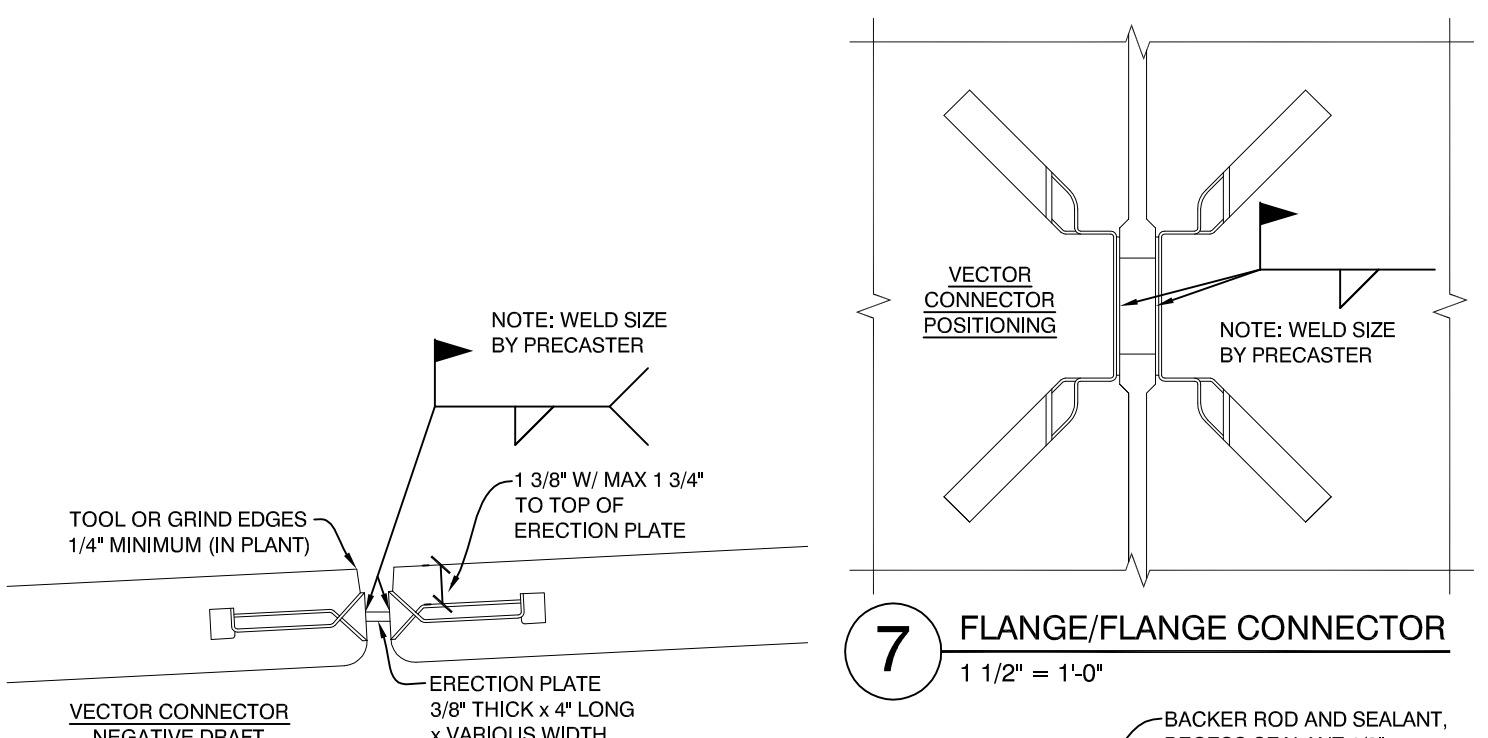


Friday, March 19, 2016 4:07:09 PM

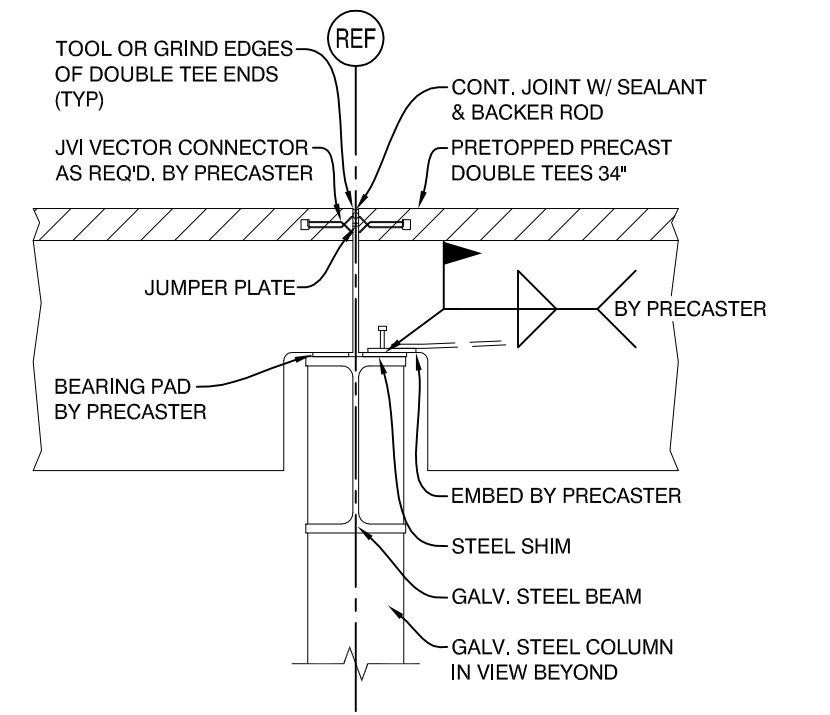


7 FLANGE/FLANGE CONNECTOR
1 1/2" = 1'-0"

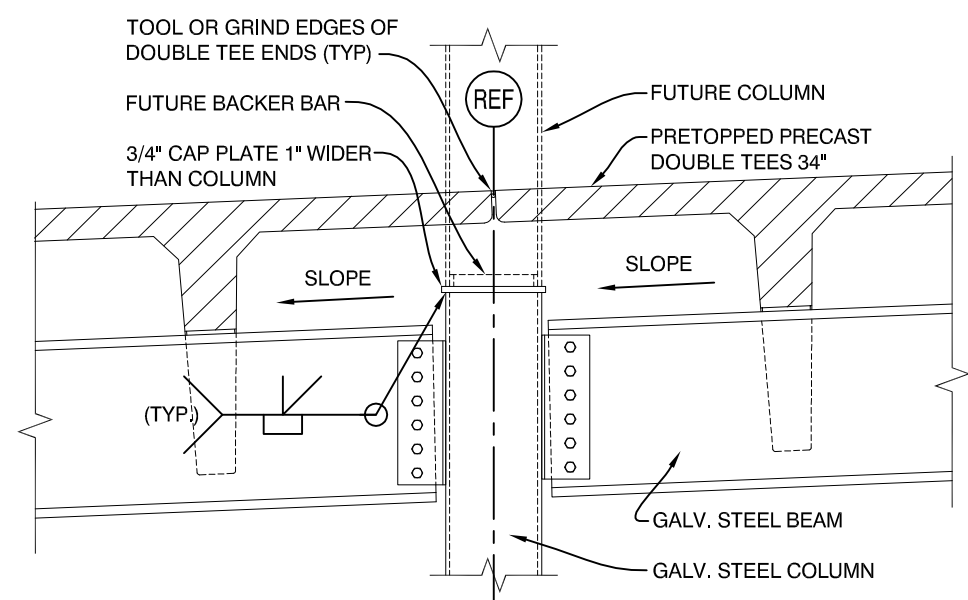
- NOTES:
 1) CENTER WELD AND FIELD PLATE WITHIN FACEPLATE OF VECTOR CONNECTOR. DO NOT WELD AT CORNERS
 2) DO NOT OVER WELD; 4" MAXIMUM WELD LENGTH
 3) FIELD PLATE TO BE HORIZONTAL
 4) TOP EDGE OF VECTOR CONNECTOR MUST BE CLEAN
 5) FOR A304 STAINLESS STEEL VECTOR CONNECTORS, USE A304 STAINLESS STEEL ERECTION PLATES AND USE WELDING ELECTRODE E308

6 FLANGE/FLANGE CONNECTOR
1 1/2" = 1'-0"

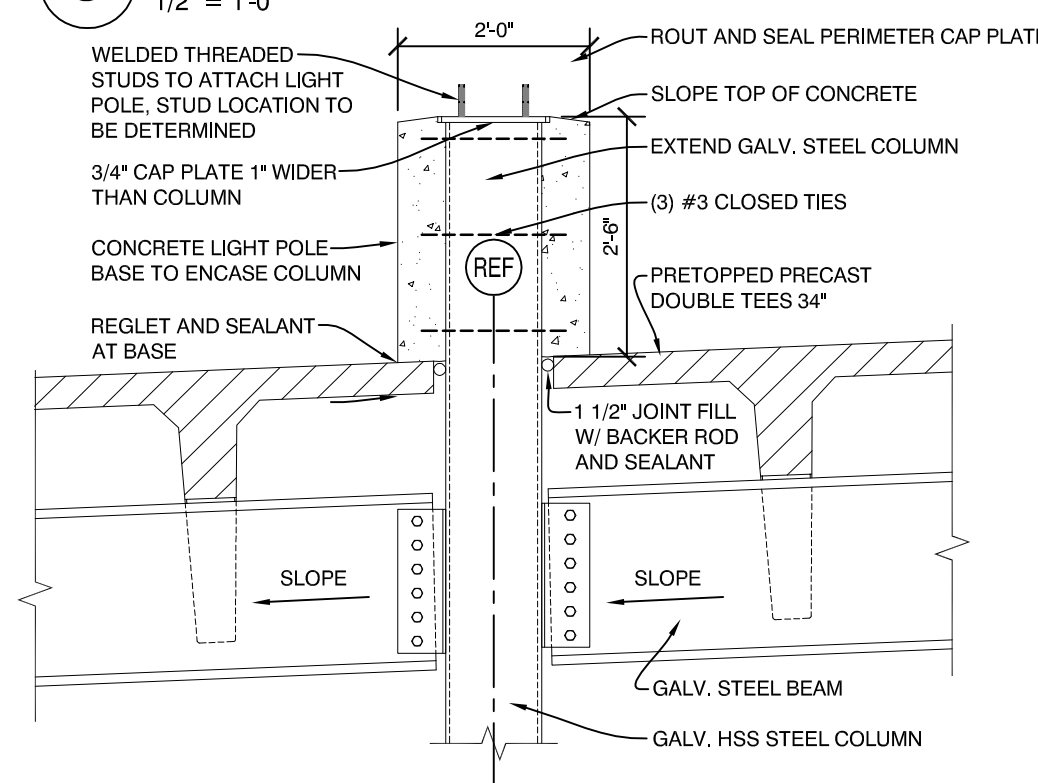
5 FLANGE/FLANGE JOINT
1 1/2" = 1'-0"



4 PRECAST DOUBLE TEE FRAMING DETAIL
1/2" = 1'-0"

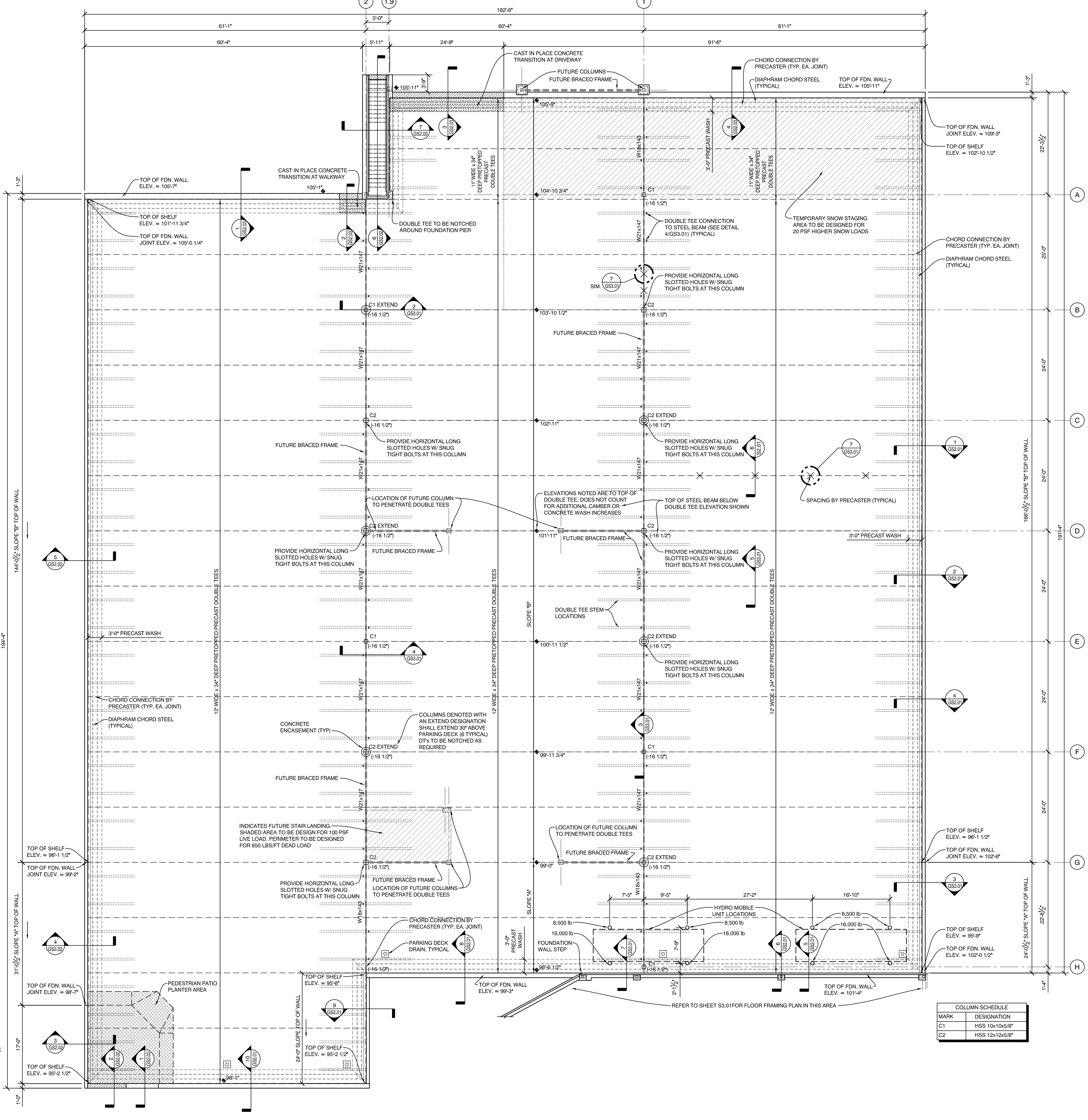


3 PRECAST DOUBLE TEE FRAMING DETAIL
1/2" = 1'-0"



2 PRECAST DOUBLE TEE FRAMING DETAIL
1/2" = 1'-0"

- NOTES:
 1. ALL DIMENSIONS AND ELEVATIONS BY ARCHITECT.
 2. WATERPROOFING AND DRAINAGE (SUB-GRADE AND ON DECK) BY OTHERS, NOT DESIGNED BY STRUCTURAL ENGINEER.
 3. FUTURE OVERBUILD:
 A. DESIGN BASED ON IBC 2009. MODIFICATIONS TO STRUCTURE MAY BE REQUIRED IF DESIGNED WITH FUTURE CODE.
 B. REFERENCE ARCH/MECH FOR FIRE RATINGS REQUIRED TO ACCOMMODATE FUTURE STRUCTURE.
 4. REFERENCE MECHANICAL DRAWINGS FOR PENETRATIONS FOR VENTILATION AND DRAINAGE.
 5. ALL BEAM CONNECTIONS TO BE DESIGNED FOR 150 KIPS ULTIMATE SHEAR LOAD. SUBMIT CONNECTIONS TO ENGINEER OF RECORD FOR REVIEW AND APPROVAL.



1 PARKING DECK FRAMING PLAN
3/32" = 1'-0"

COLUMN SCHEDULE	
MARK	DESIGNATION
C1	HSS 10x10x5/8"
C2	HSS 12x12x5/8"



Mixed Use Development
 York & High Street
 Portland, Maine

REVISION:
 PER BSE FEB. 1 & 3 COMMENTS 02/04/16
 FOR BSE FEB. 22ND COMMENTS 02/24/16
 ADDED HYDRO MOBILE POINT LOAD LOCATIONS 03/08/16
 03/18/16 BSE CONSTRUCTION MARKUPS

ISSUED:
 FOR STRUCTURAL REVIEW 09/21/15
 FOR STRUCTURAL REVIEW 12/09/15
 FOR BUILDING PERMIT 02/26/16

project architect: KAK
 drawn by: JUD

PARKING DECK FRMG. PLAN

sheet number:
GS3.01