

Friday, March 18, 2016 4:15:59 PM

| TYPE | DIAMETER | EMBEDMENT | TOTAL LENGTH |
|------|----------|-----------|--------------|
| AB-1 | 3/4" Ø | 12" | 16" |
| AB-2 | 1" Ø | 16" | 20" |
| AB-3 | 1 1/4" Ø | 40" | 46" |

NOTES:
 1. AT AB-2 AND AB-3 PROVIDE 3"x1/2" WASHERS FIELD WELDED TO BASEPLATE.
 2. ALL ANCHOR BOLTS SHALL BE GALVANIZED. PROVIDE PLATE WASHER AT ALL OVERSIZED HOLES PER ABC.

ANCHOR BOLTS
1/2" = 1'-0"

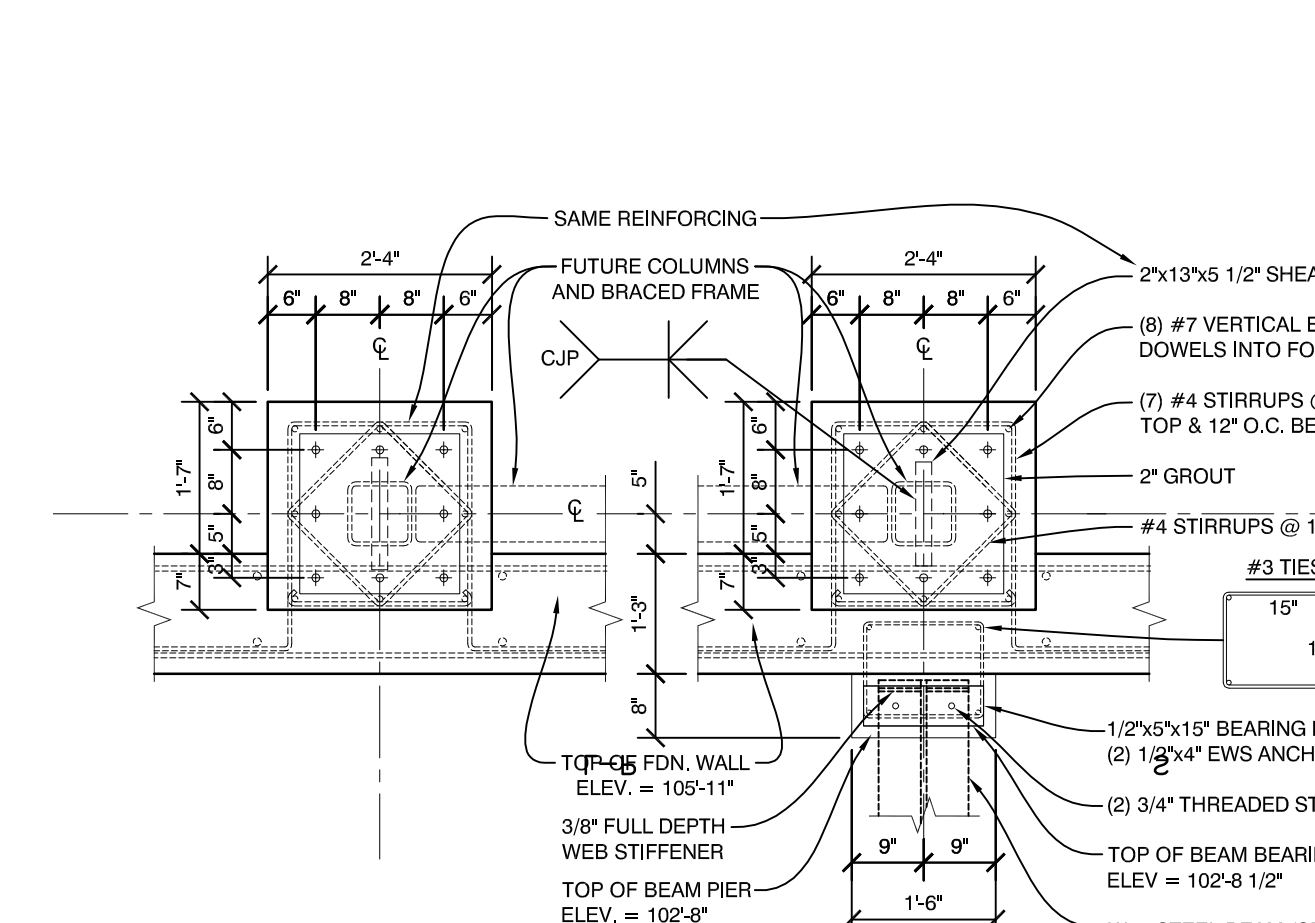
BASEPLATE - 2 (GALV.)
1/2" = 1'-0"

BASEPLATE - 3 (GALV.)
1/2" = 1'-0"

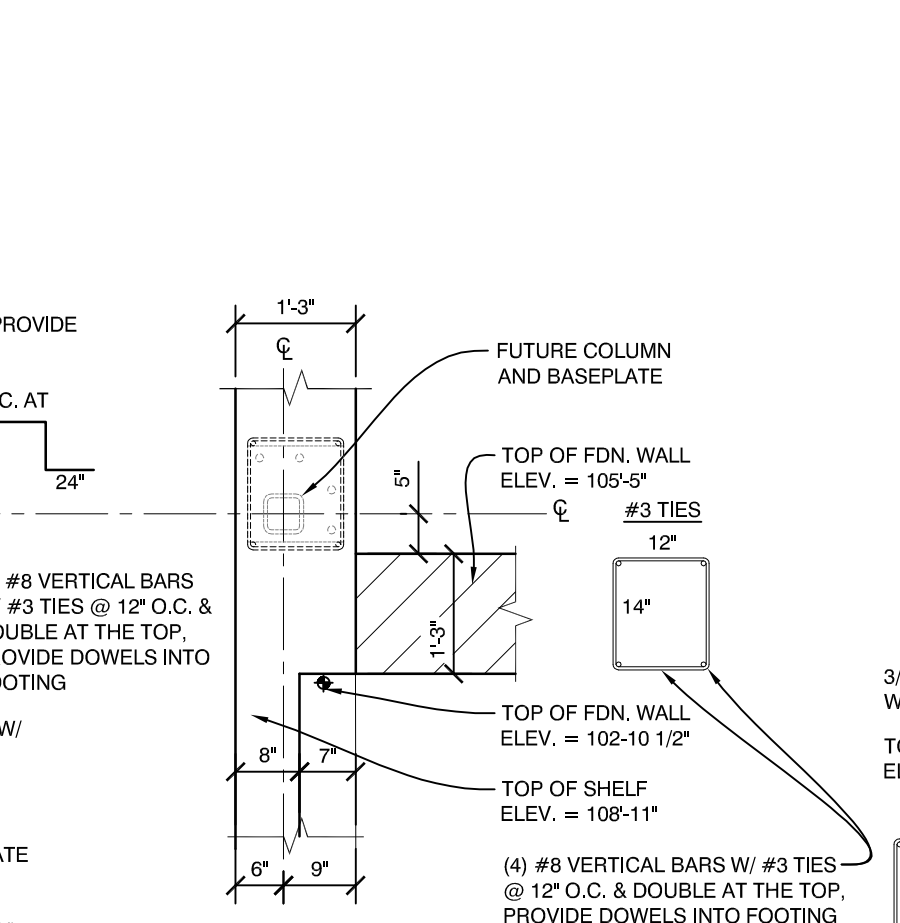
BASEPLATE - 1 (GALV.)
1/2" = 1'-0"

6 BASEPLATE INTERIOR FOOTING DETAIL
1/2" = 1'-0"

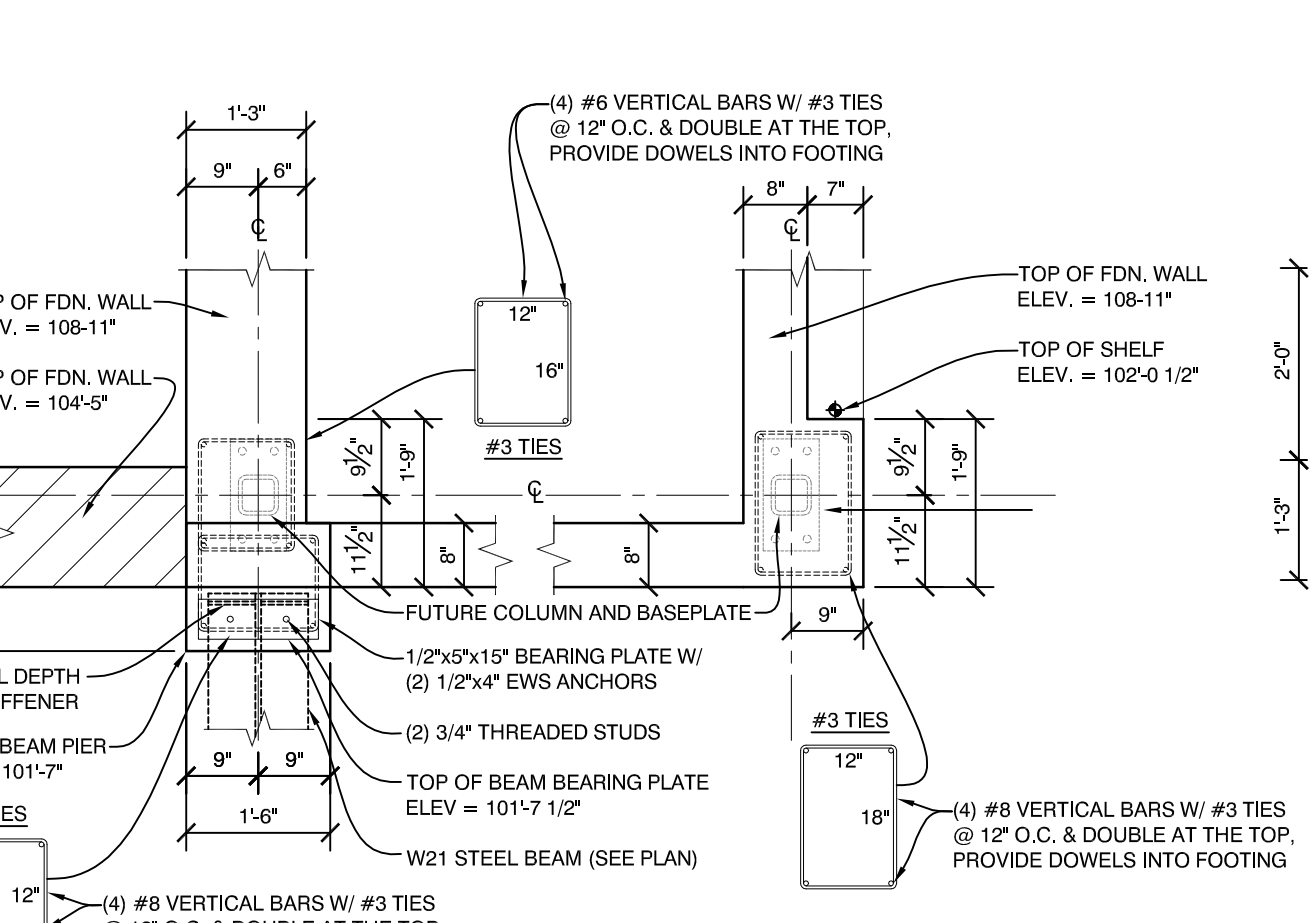
5 SPREAD FOOTING DETAIL
1/2" = 1'-0"



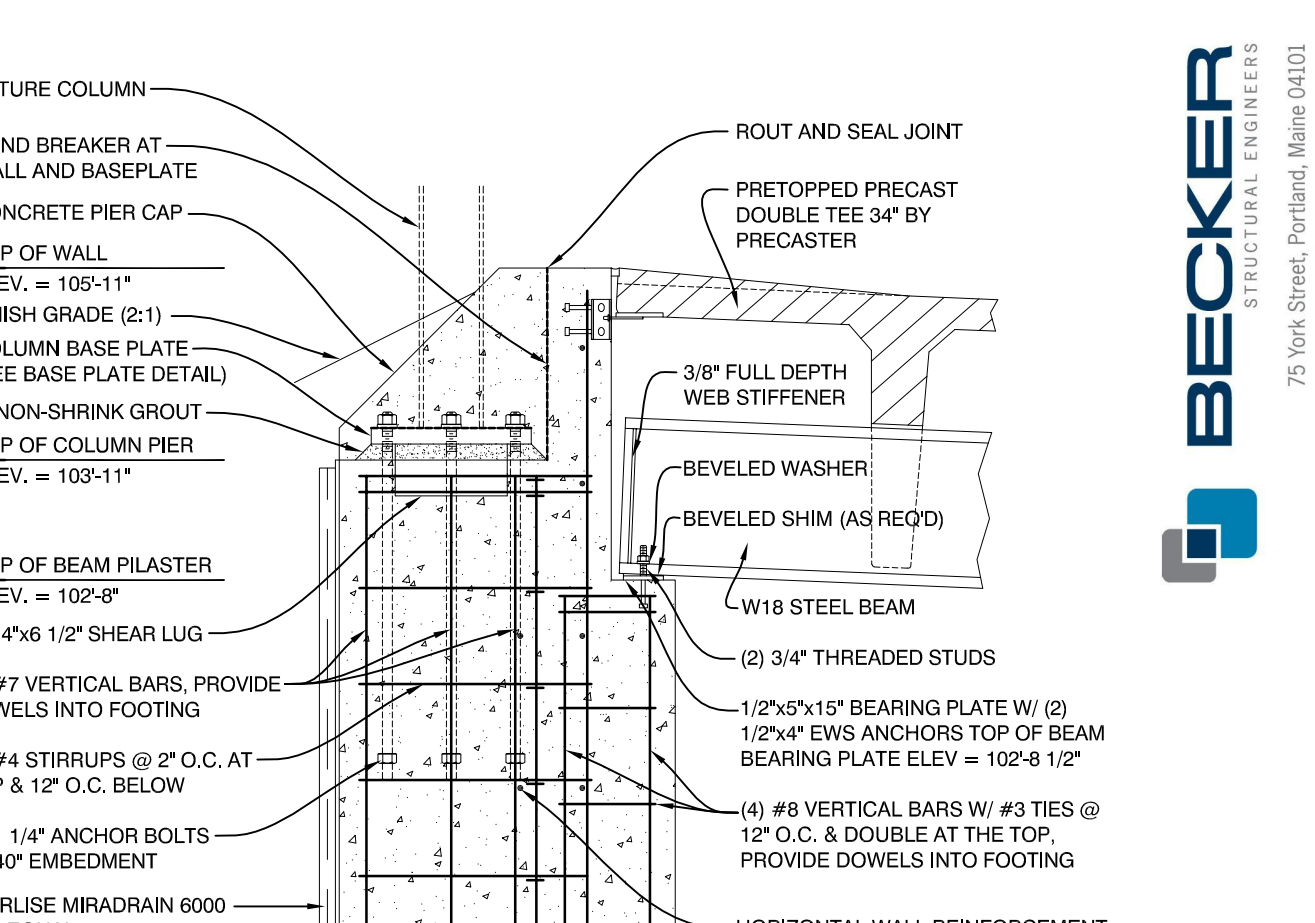
17 FUTURE COL./BP PIER DETAIL
1/2" = 1'-0"



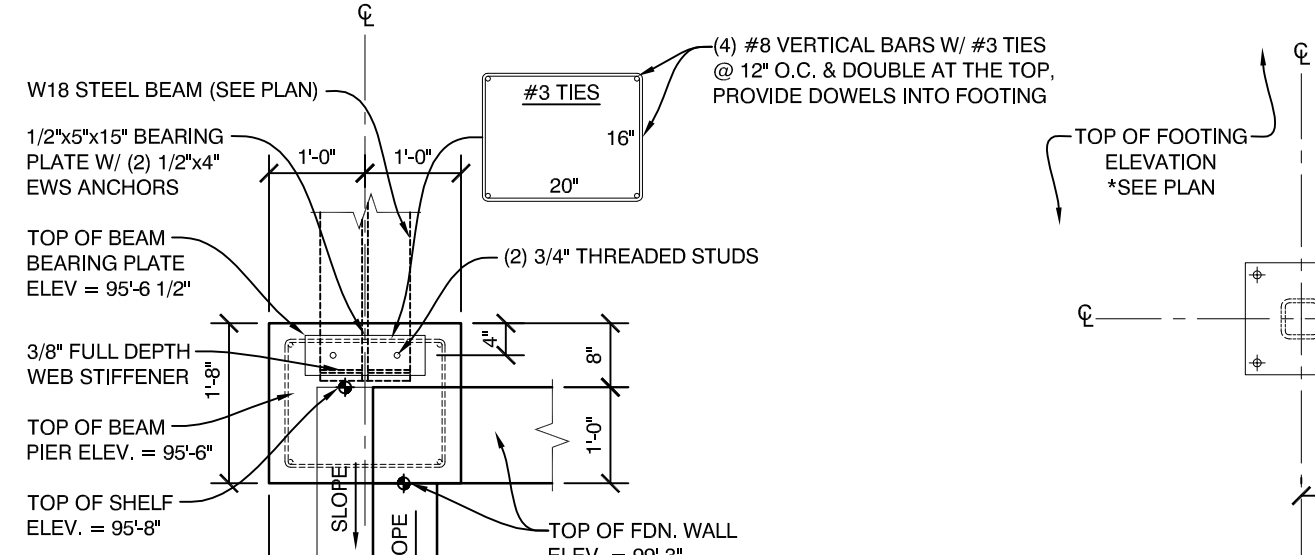
16 FUTURE COLUMN/BASEPLATE PIER DETAIL
1/2" = 1'-0"



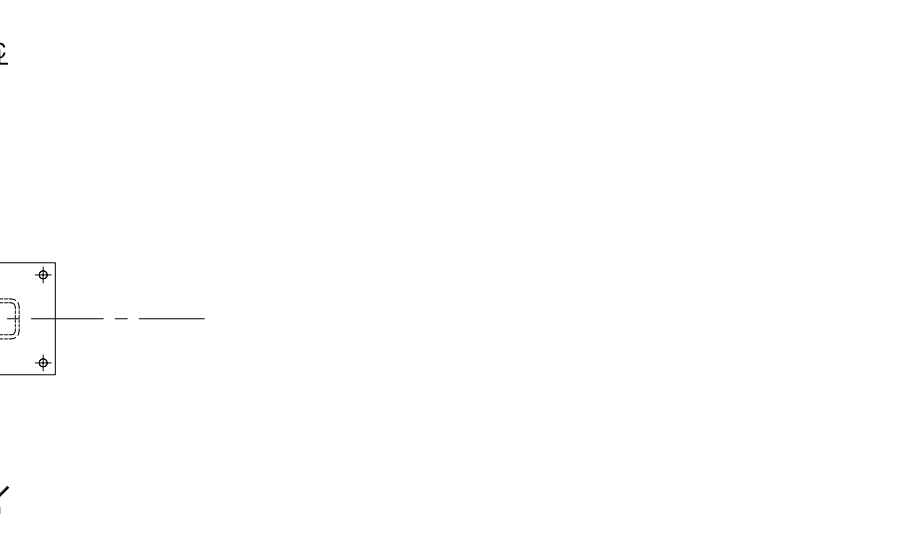
15 FUTURE COLUMN/BASEPLATE PIER DETAIL
1/2" = 1'-0"



14 FUTURE COLUMN/BASEPLATE PIER DETAIL
1/2" = 1'-0"



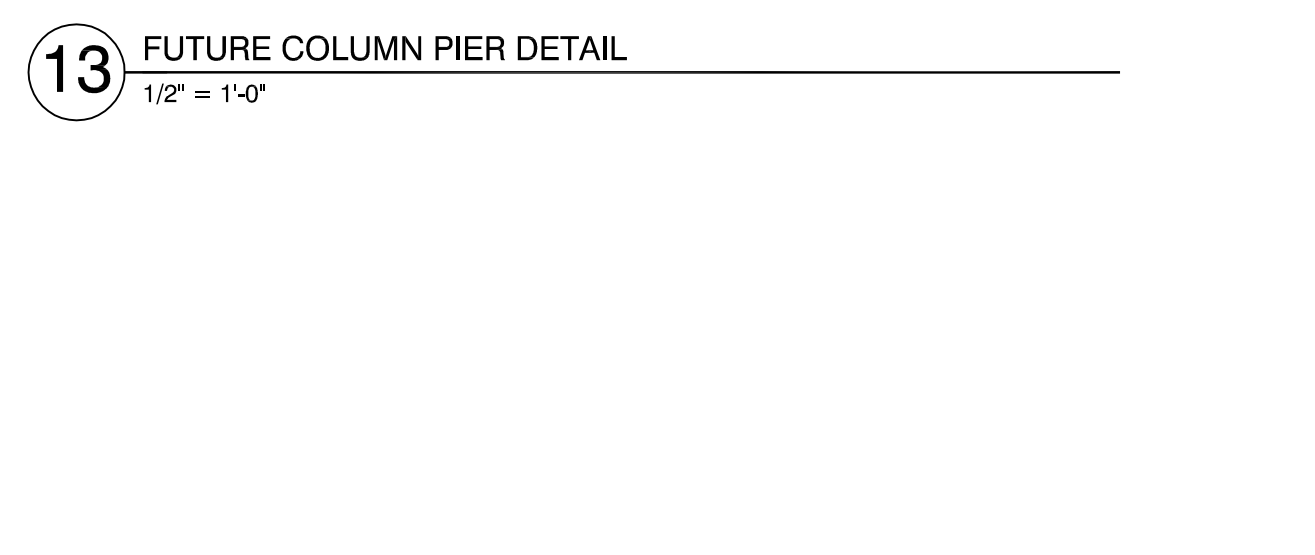
12 FUTURE COL./BP INT. FTG. DETAIL
1/2" = 1'-0"



12.1 FUTURE COLUMN/BASEPLATE INTERIOR FOOTING DETAIL
1/2" = 1'-0"

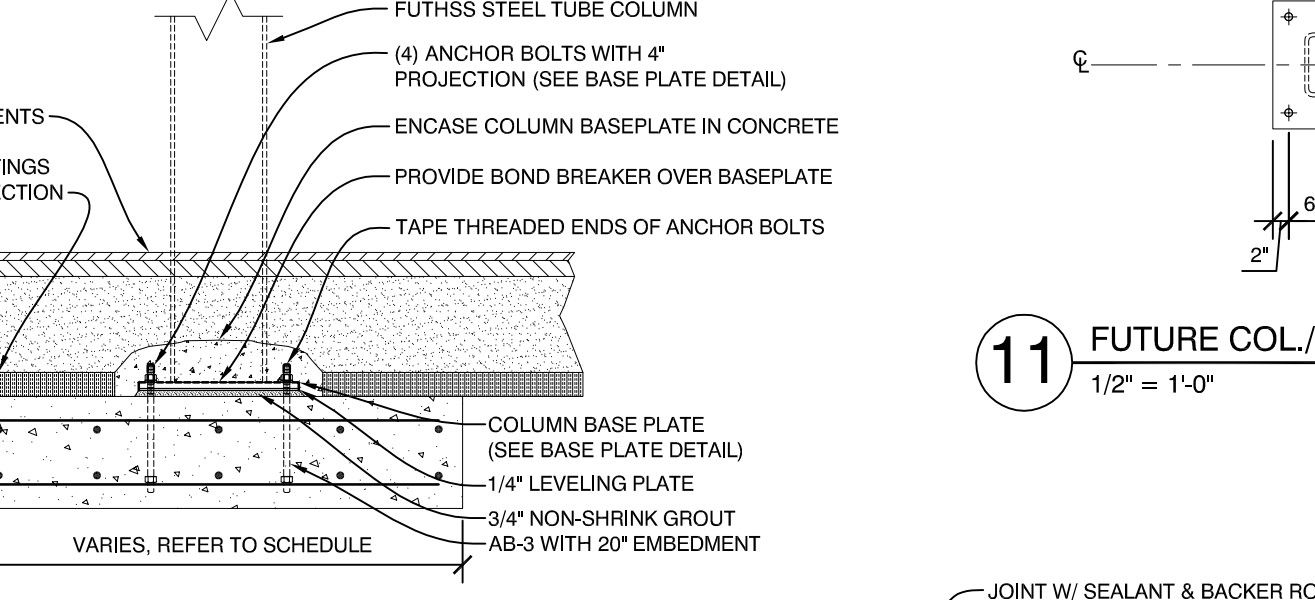


13 FUTURE COLUMN PIER DETAIL
1/2" = 1'-0"

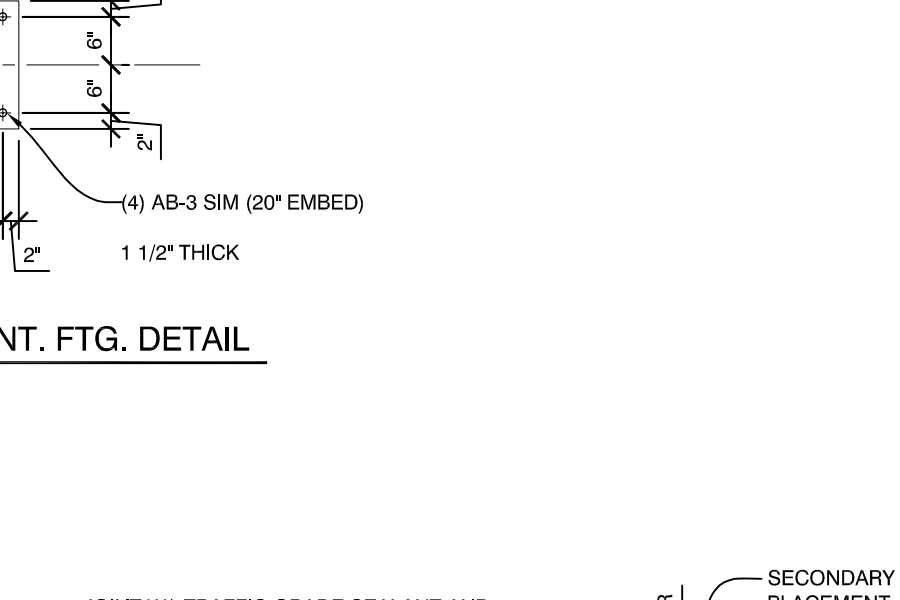


13.1 FUTURE COLUMN PIER DETAIL
1/2" = 1'-0"

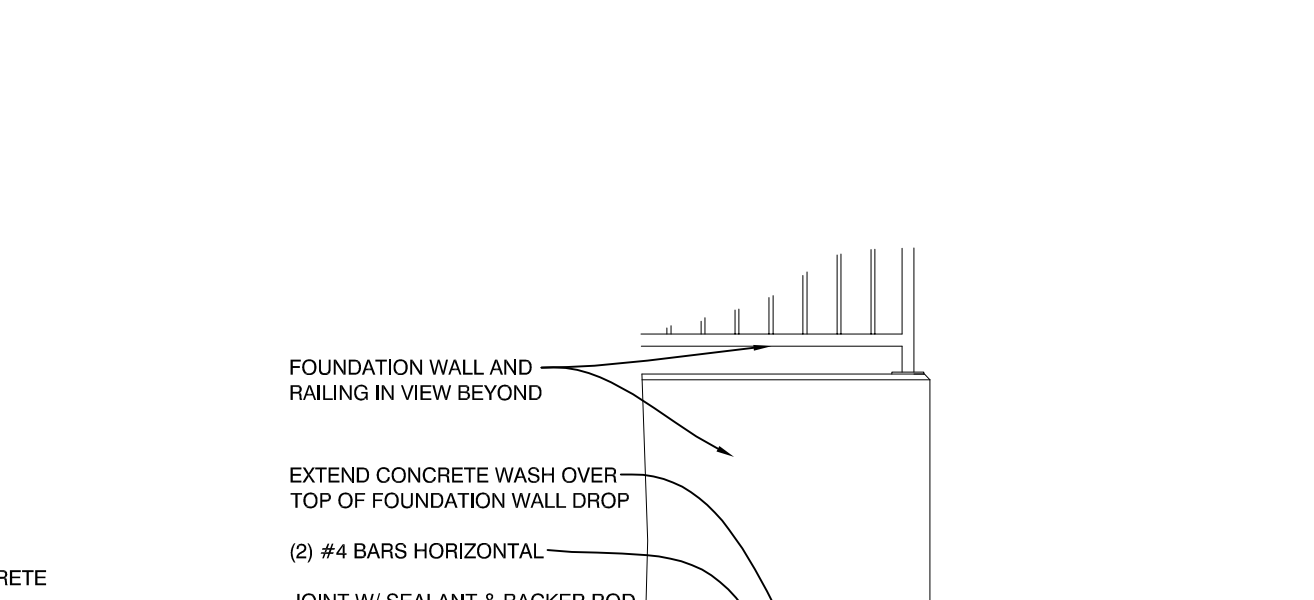
19 BEAM BEARING DETAIL
1/2" = 1'-0"



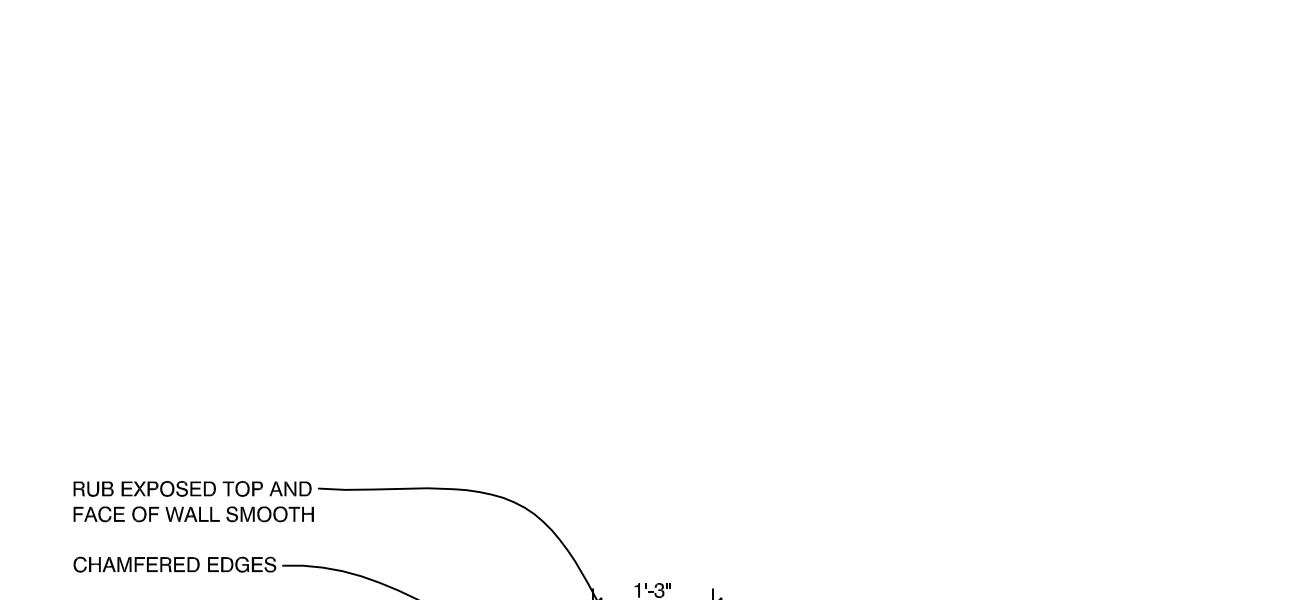
11 FUTURE COL./BP INT. FTG. DETAIL
1/2" = 1'-0"



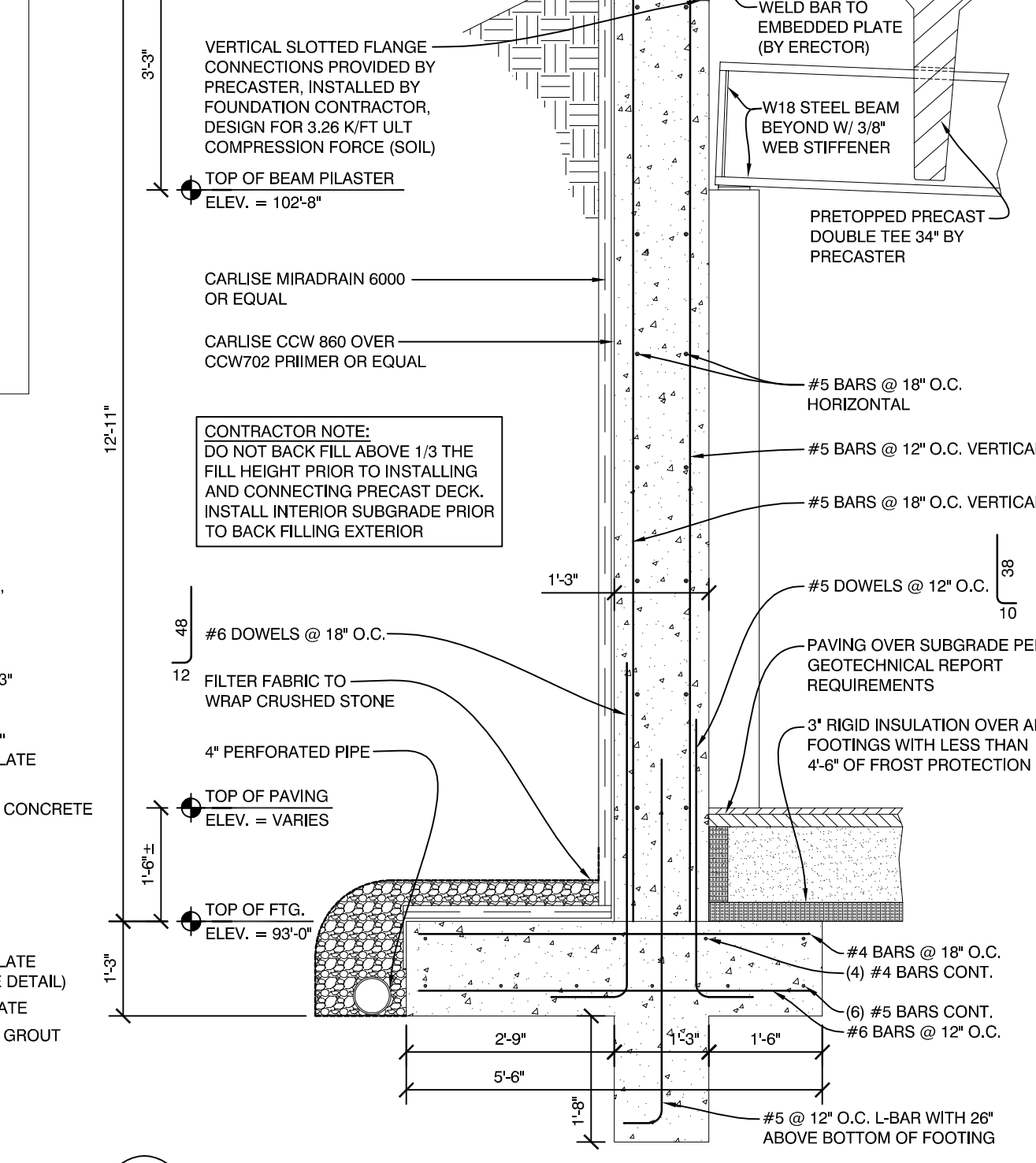
12.2 FUTURE COLUMN/BASEPLATE INTERIOR FOOTING DETAIL
1/2" = 1'-0"



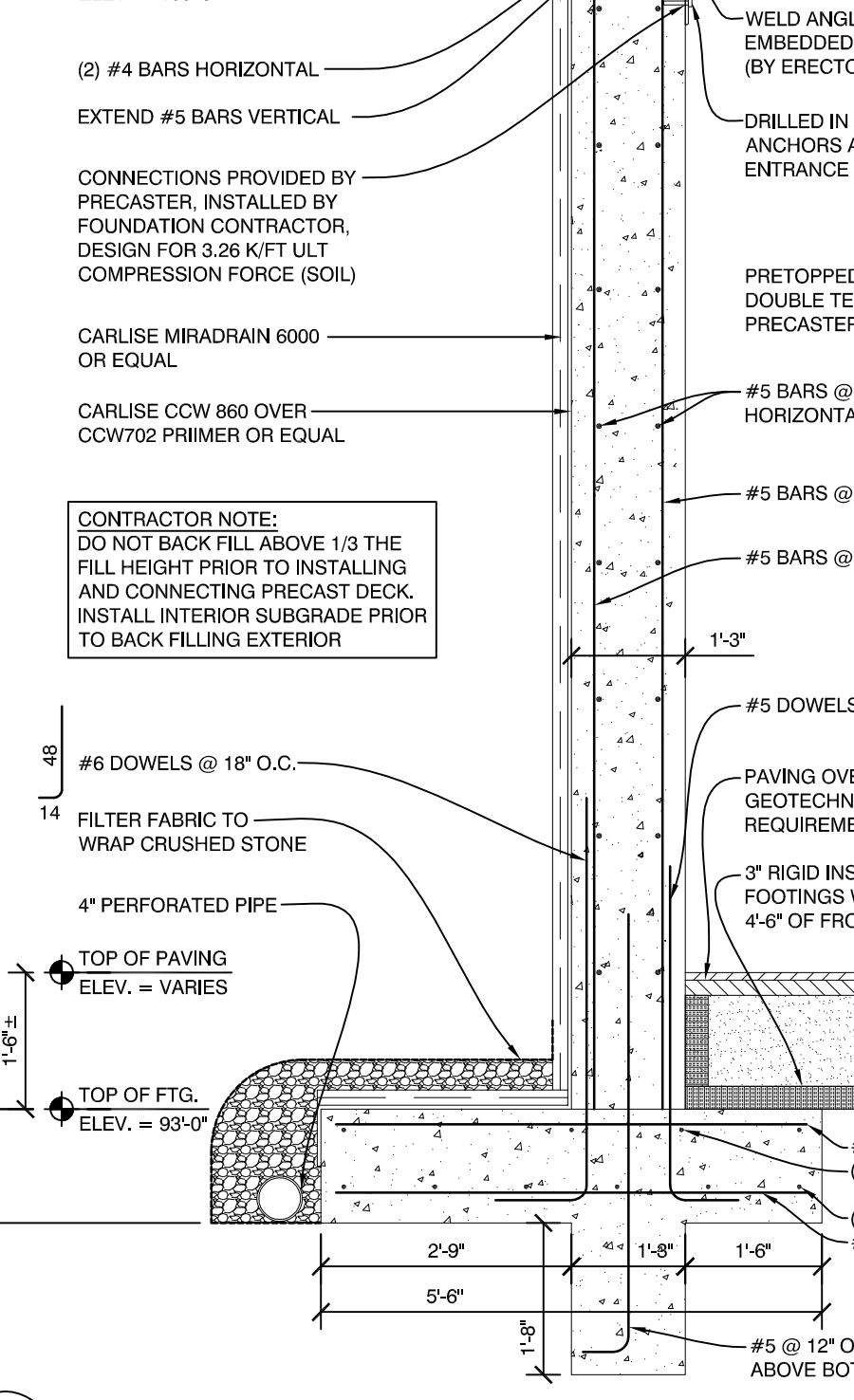
13.2 FUTURE COLUMN PIER DETAIL
1/2" = 1'-0"



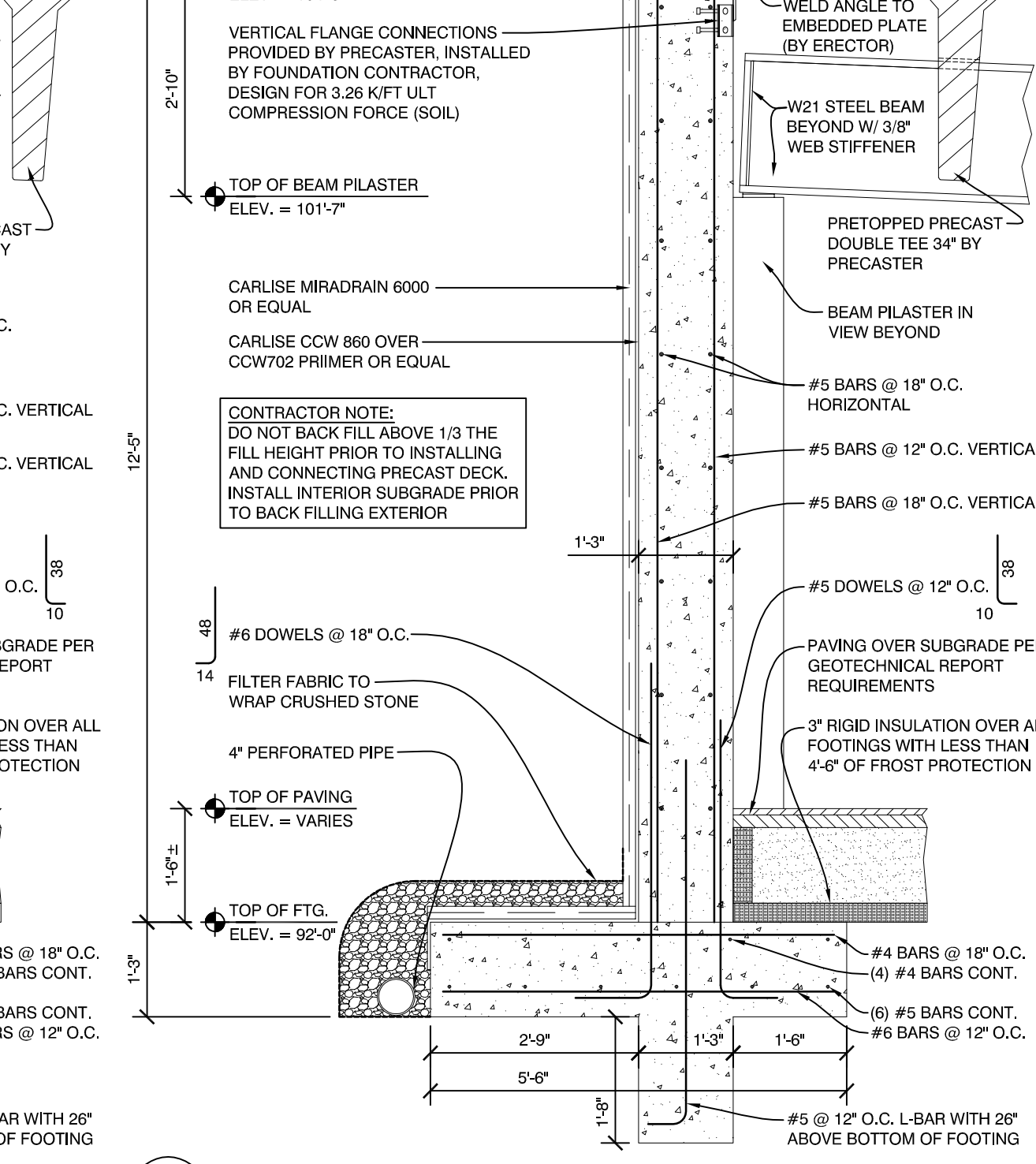
4 PRECAST DOUBLE TEE EDGE AT RETAINING WALL
1/2" = 1'-0"



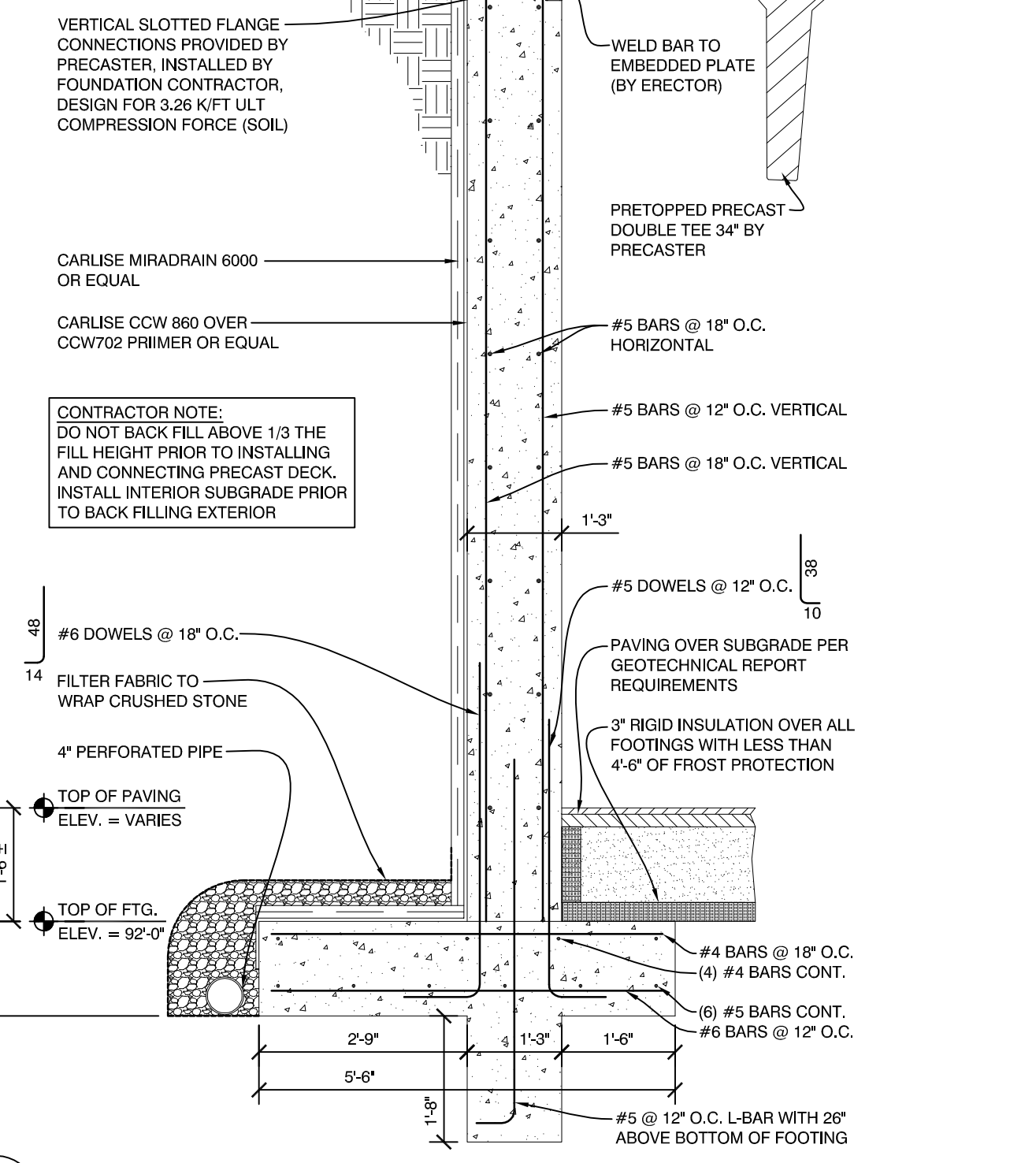
3 PRECAST DOUBLE TEE EDGE AT RETAINING WALL
1/2" = 1'-0"



2 PRECAST DOUBLE TEE EDGE AT RETAINING WALL
1/2" = 1'-0"



1 PRECAST DOUBLE TEE EDGE AT RETAINING WALL
1/2" = 1'-0"



75 York Street, Portland, Maine 04101
202.873.8338 • beckerstructural.com



11 CORPORATE DRIVE • BELMONT • NH 03220
PHONE (603) 927-8006 • WWW.OPECHEE.COM

Mixed Use Development
York & High Street
Portland, Maine

REVISION:
PER BSE FEB. 1 & 3 COMMENTS 02/04/16
DETAIL 15 PIER ADDED 02/15/16
PER BSE FEB. 22ND COMMENTS 02/24/16
03/18/16 BSE CONSTRUCTION MARKUPS

ISSUED:
FOR STRUCTURAL REVIEW 11/12/15
FOR STRUCTURAL REVIEW 12/09/15
FOR BUILDING PERMIT 02/26/16

project architect: KAK
drawn by: JKD

PARKING GARAGE FDN. DETAILS
sheet number:
GS2.03