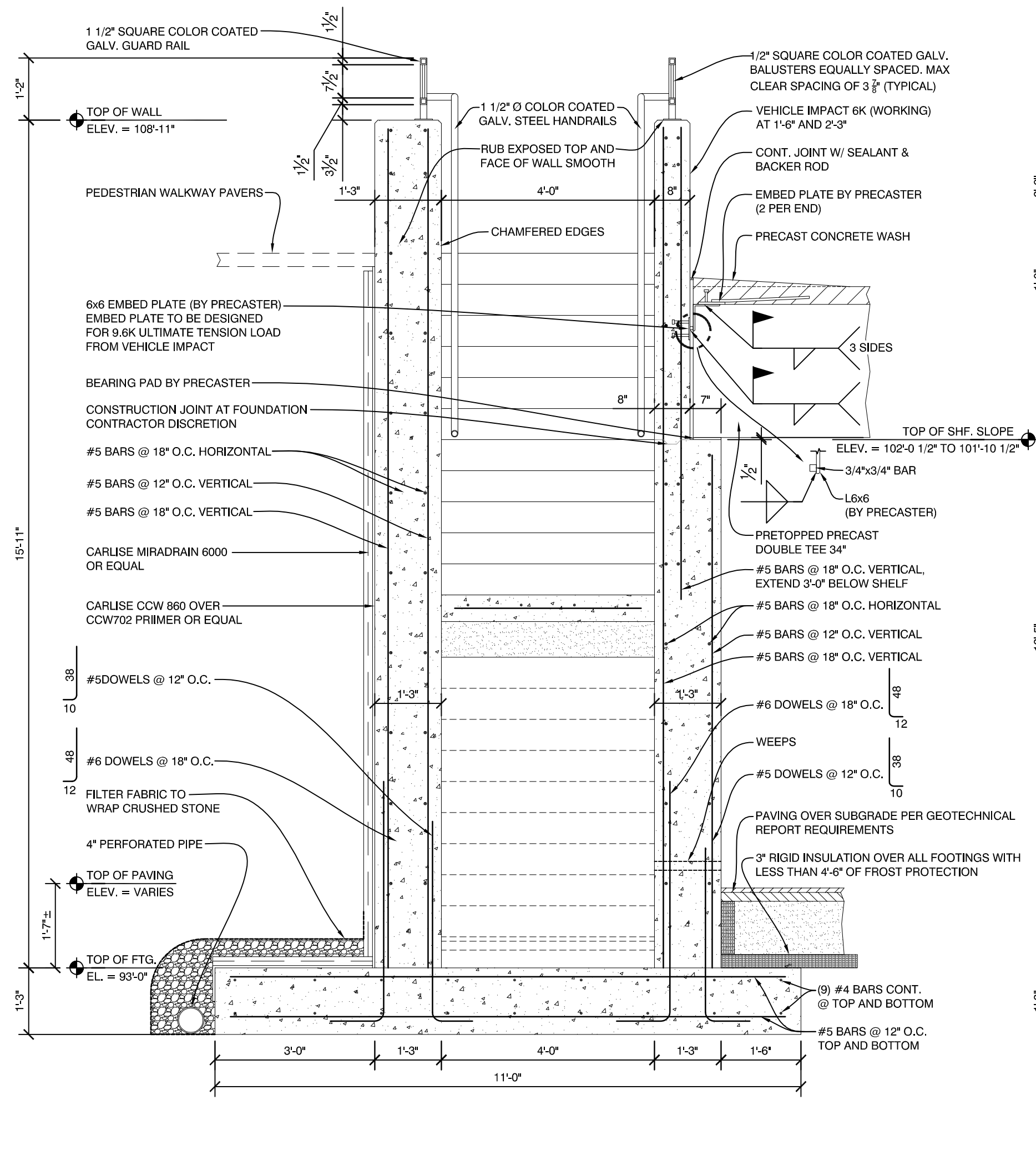
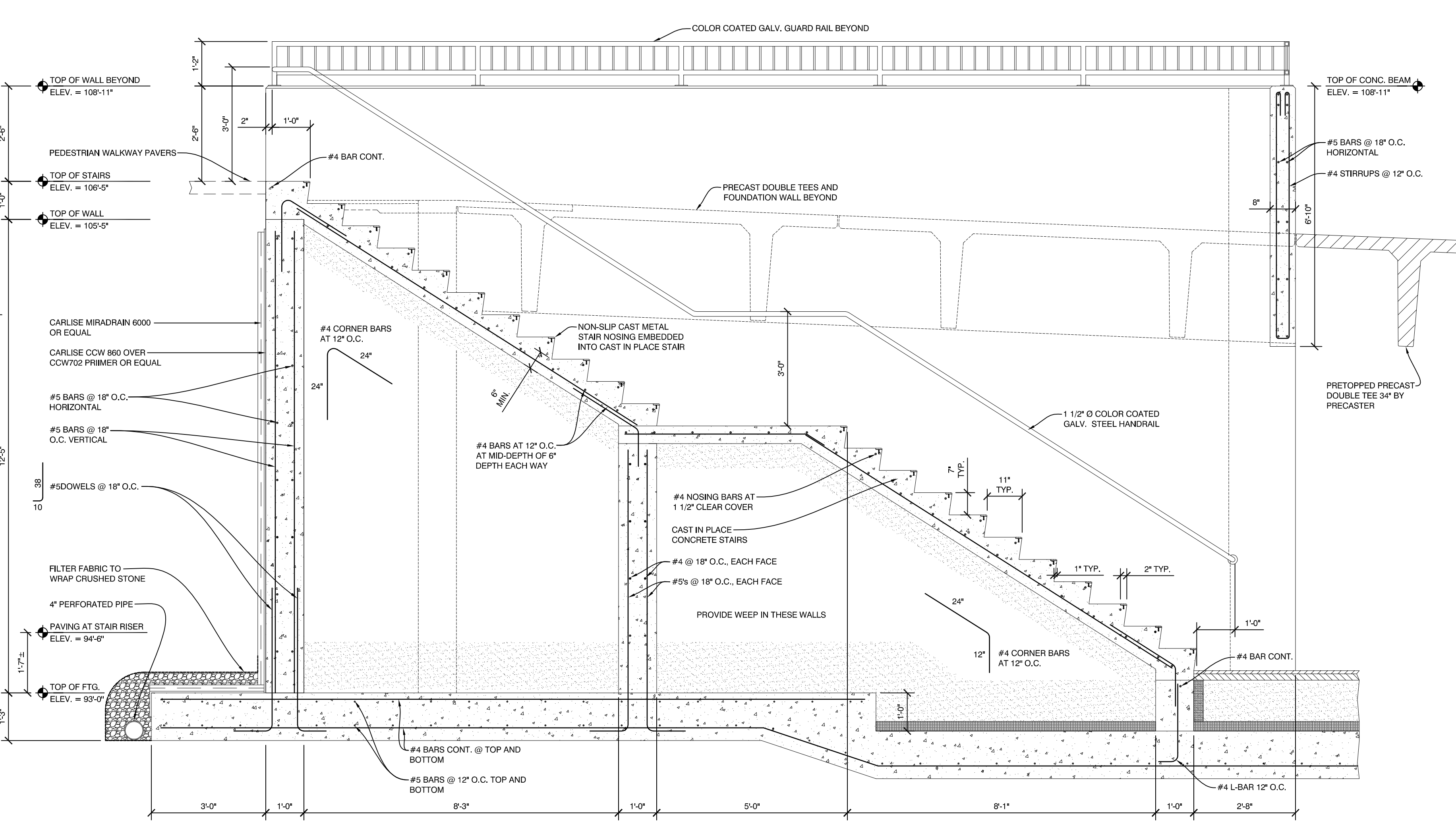


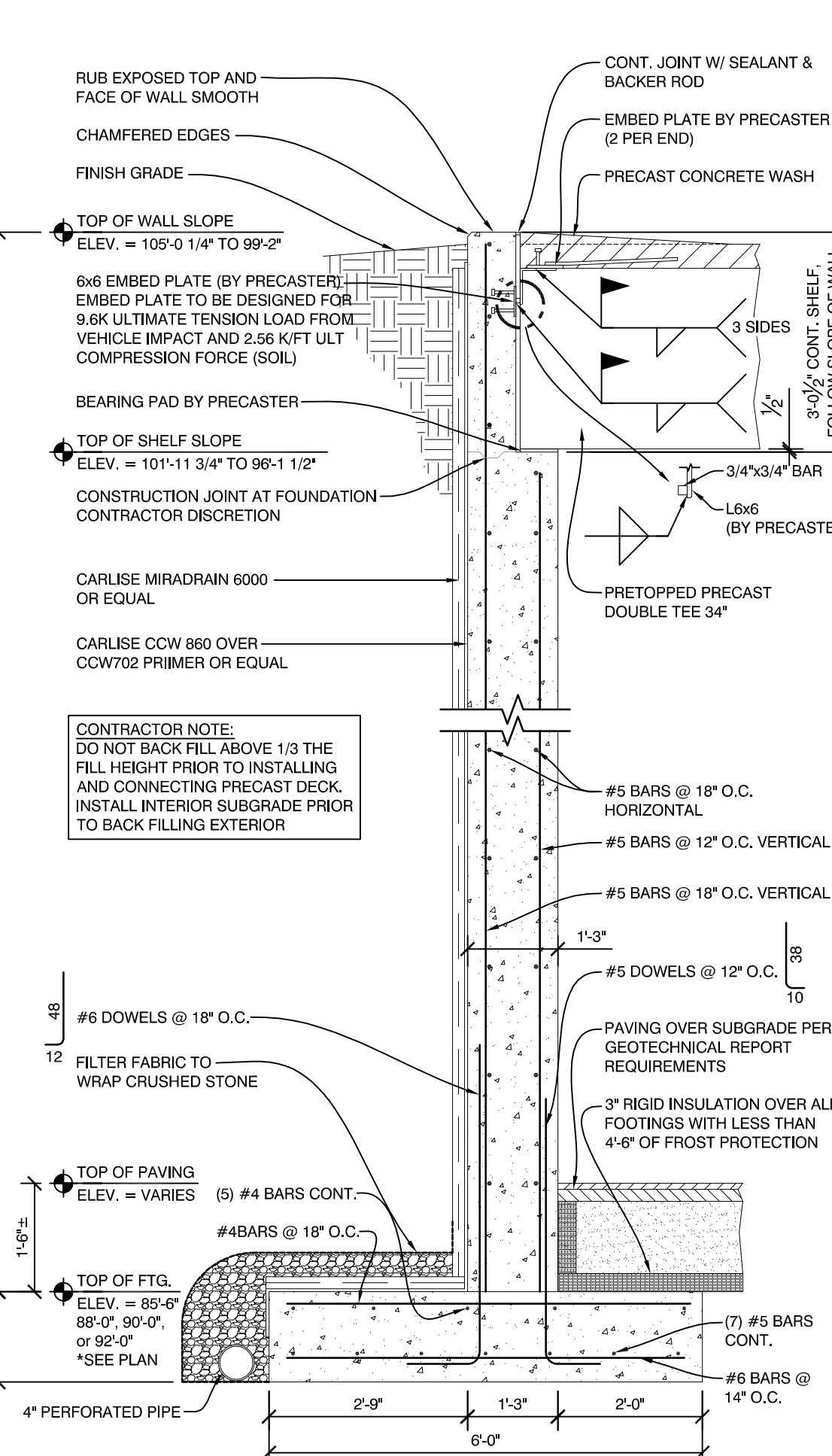
Friday, March 18, 2016 4:19:18 PM



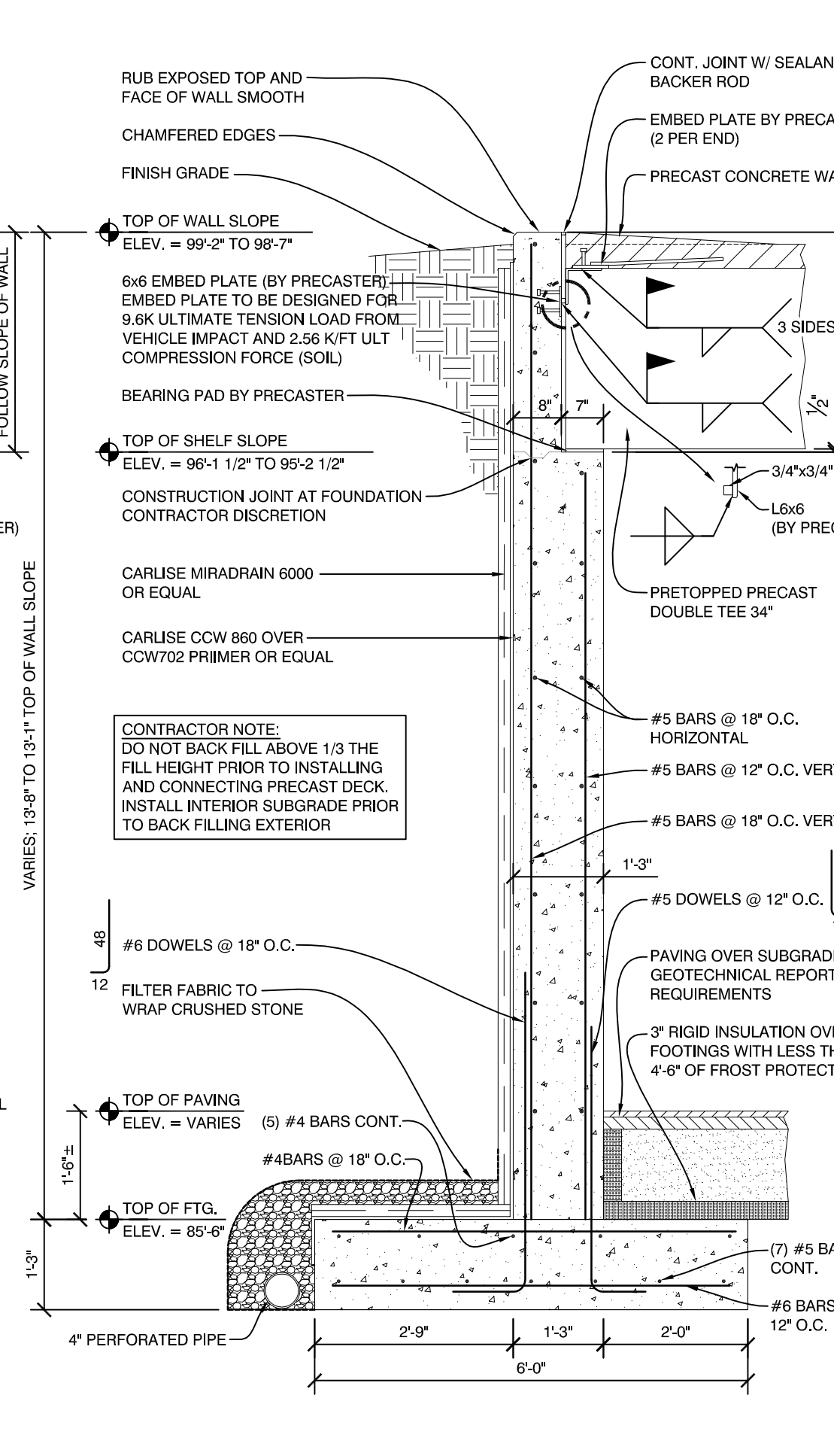
7 PRECAST DOUBLE TEE BEARING AT CAST IN PLACE STAIR
1/2" = 1'-0"



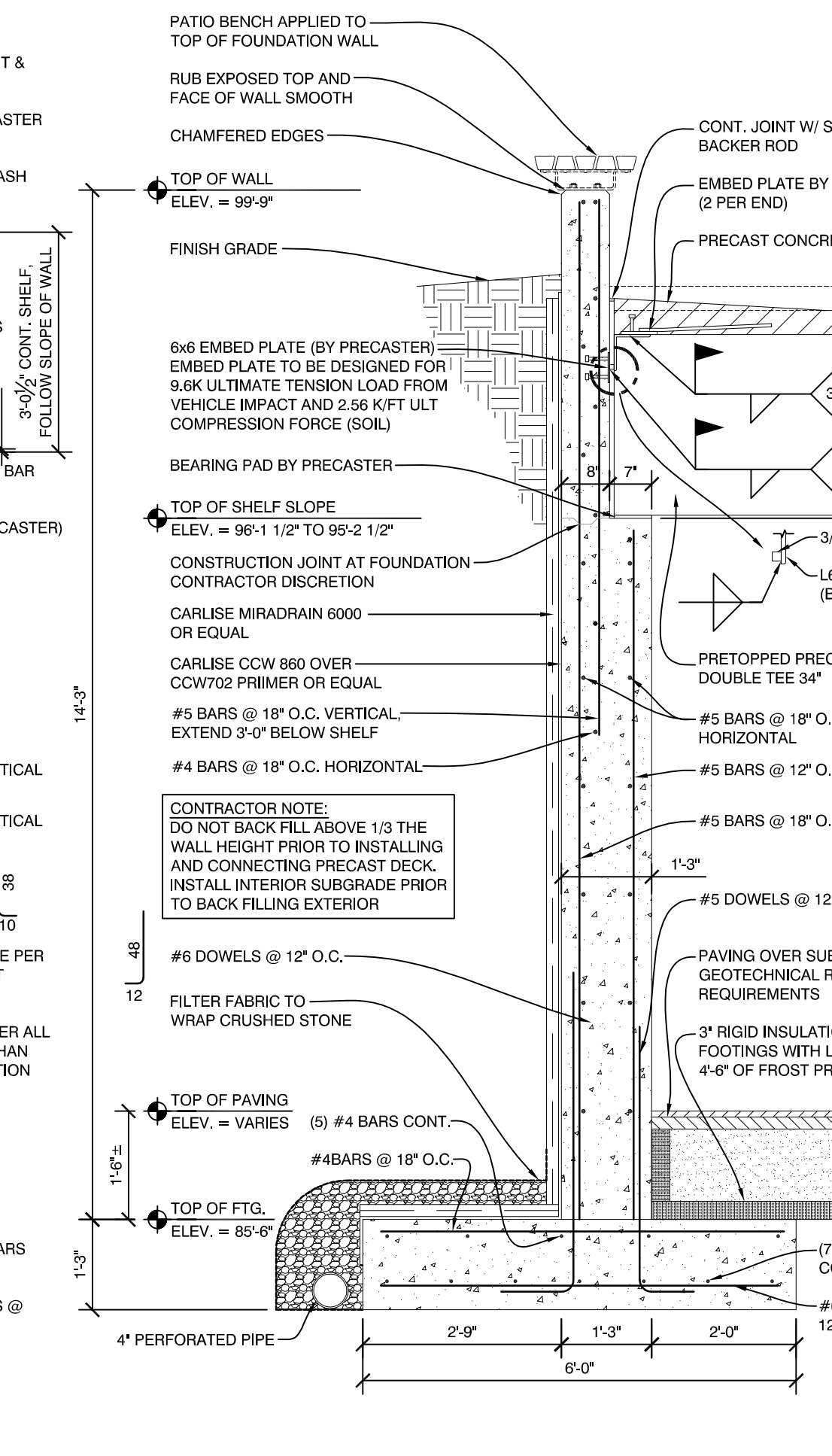
6 PRECAST DOUBLE TEE BEARING AT CAST IN PLACE STAIR
1/2" = 1'-0"



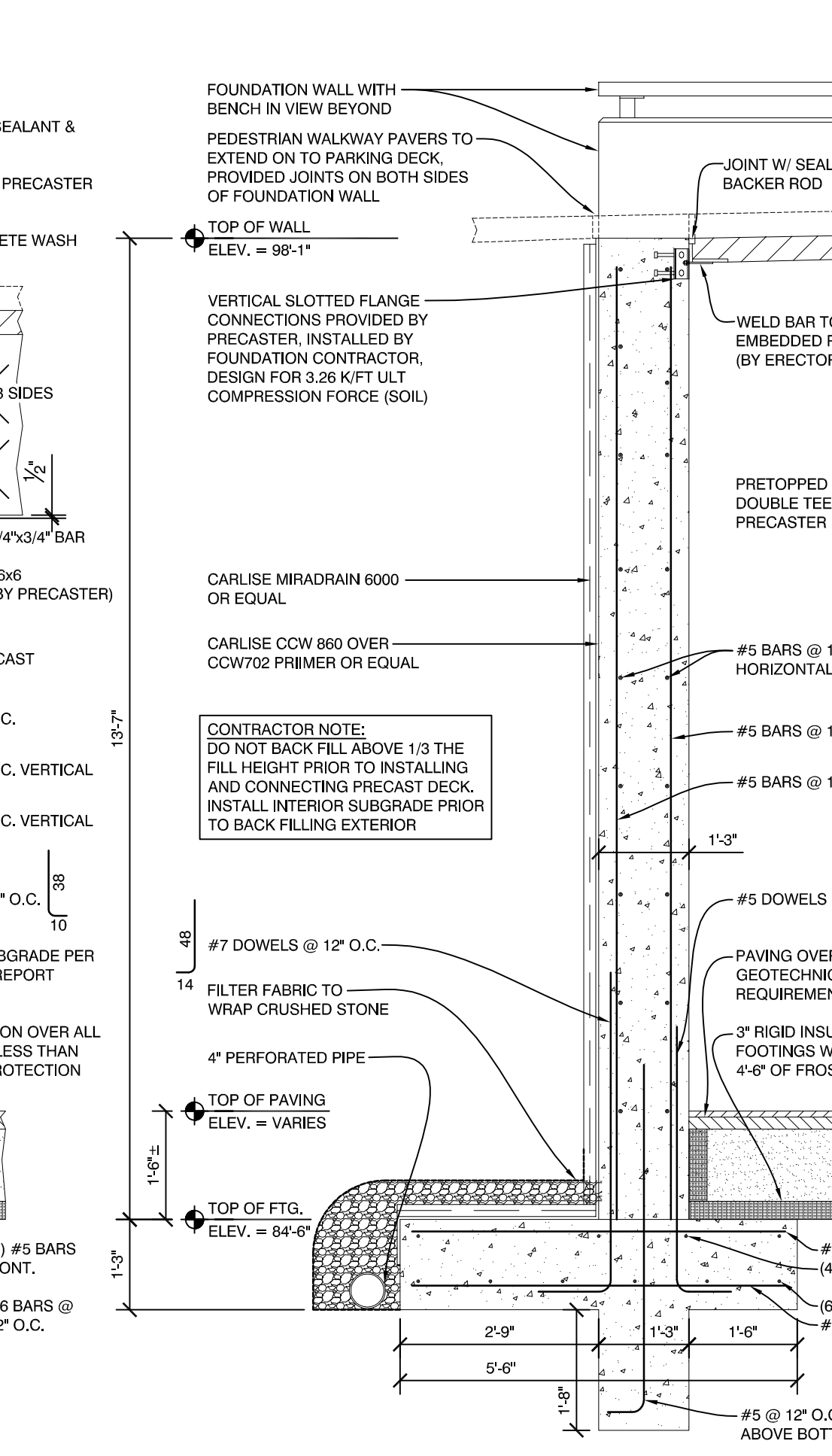
5 PRECAST DOUBLE TEE BEARING AT RETAINING WALL
1/2" = 1'-0"



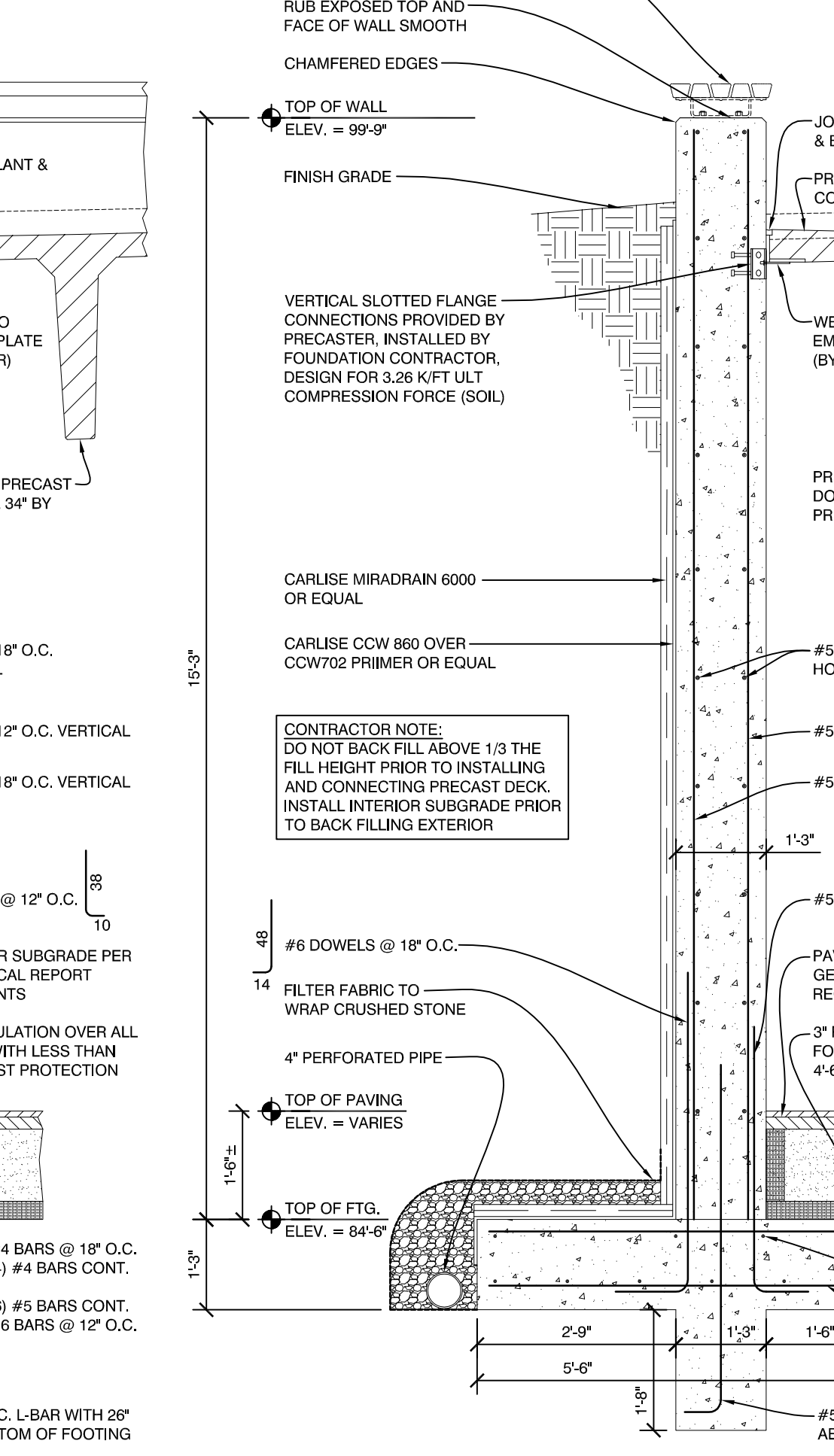
4 PRECAST DOUBLE TEE BEARING AT RETAINING WALL
1/2" = 1'-0"



3 PRECAST DOUBLE TEE BEARING AT RETAINING WALL
1/2" = 1'-0"



2 PRECAST DOUBLE TEE EDGE AT RETAINING WALL
1/2" = 1'-0"



1 PRECAST DOUBLE TEE EDGE AT RETAINING WALL
1/2" = 1'-0"



75 York Street, Portland, Maine 04101
207.673.1538 • beckerstructural.com



Mixed Use Development
York & High Street
Portland, Maine

REVISION:
PER BSE FEB. 1 & 3 COMMENTS 02/04/16
WIDTH OF CONCRETE BEAM AT STAIRS 02/15/16
PER BSE FEB. 22ND COMMENTS 02/24/16
03/18/16 BSE CONSTRUCTION MARKUPS

ISSUED:
FOR STRUCTURAL REVIEW 09/21/15
FOR STRUCTURAL REVIEW 11/12/15
FOR STRUCTURAL REVIEW 12/09/15
FOR BUILDING PERMIT 02/26/16

project architect: KAK
drawn by: JUD

PARKING GARAGE FDN. DETAILS

sheet number: GS2.02