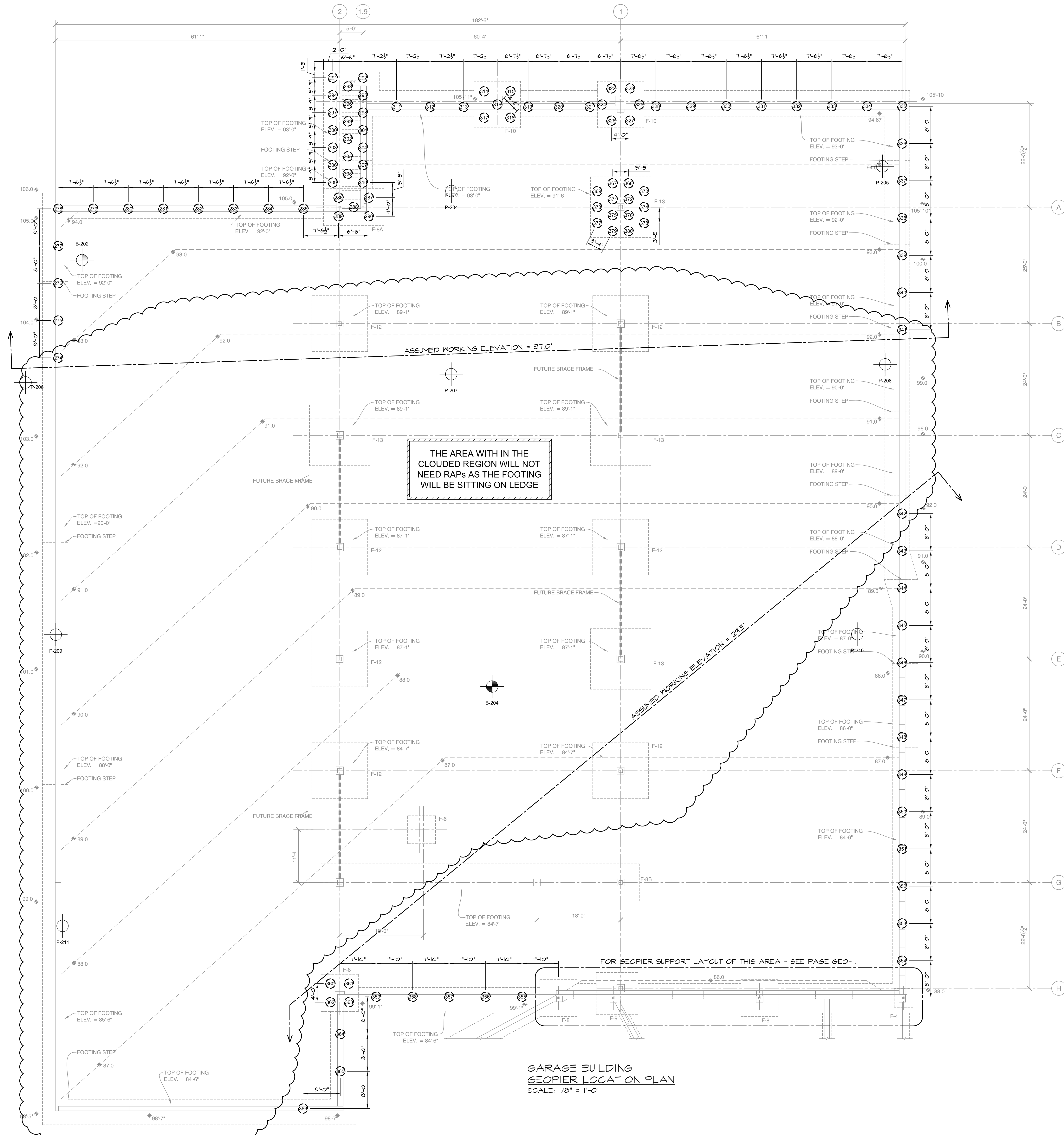
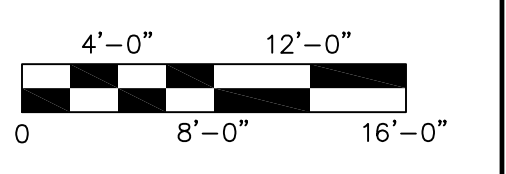
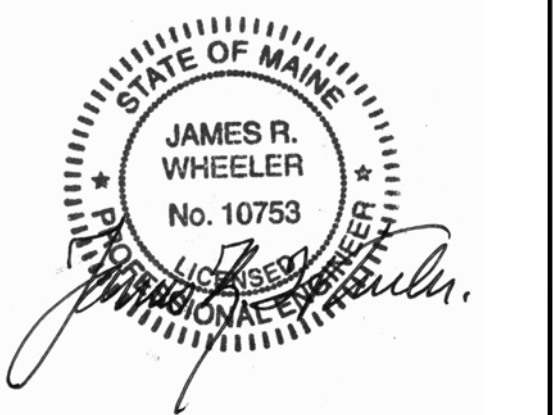


NOTES:

1. Geopier Ramped Aggregate Pier drawing based on structural drawing 55.101, Parking Garage Fdn. Plan, dated February 26, 2016, prepared by Becker Structural Engineers. Loads received via email on February 10 and 24, 2016.
2. For subsurface exploration logs and locations, see design submittal booklet.
3. For all top and bottom of footing elevations, see plans prepared by Becker Structural Engineers, Inc.
4. Footing outlines are for information only. See structural plans for footing layout, dimensions and details.
5. See design submittal booklet for Ramped Aggregate Pier shaft lengths.
6. All existing and proposed utilities within and adjacent to the proposed building footprint shall be verified by the General Contractor and coordinated with the Geopier foundation installer before Ramped Aggregate Pier installation shall proceed.
7. A copy of this drawing is available on request for use in determining coordinate locations of individual piers that can be used with electronic survey equipment to stake out pier locations in the field. Questions that may pertain to discrepancies between coordinate locations of individual piers and the pier locations referenced to the overall building grid must be discussed and clarified with the Architect. However, should a discrepancy of 2 inches or less be found, the pier may be staked out at the coordinate location shown.
8. Ramped Aggregate Piers are located at the intersection of reference grid lines or at the centerline of strip footings unless dimensioned otherwise.
9. (P) indicates Ramped Aggregate Pier element location and designation.



**GARAGE BUILDING
GEOPIER LOCATION PLAN**
SCALE: 1/8" = 1'-0"



	DESIGN/BUILD GEOTECHNICAL 2 Mount Royal Ave., Suite 208 Marlborough, MA 01752 Tel: 508-481-3849 Fax: 508-460-1114 "DELIVERING THE GEOPIER FOUNDATION SYSTEM"	*Geopier* is the registered trademark of The Geopier Foundation Company, Inc. This drawing contains information proprietary to The Geopier Foundation Company, Inc. and its licensees and is being furnished for the use of Openness Construction Corp. only in connection with this project. The information contained herein is not to be transmitted to any other organization unless specifically authorized in writing by The Geopier Foundation Company, Inc. Geopier is the property of The Geopier Foundation Company, Inc. and is protected under U.S. Patent No. 5,249,852 and other patents pending.		SCALE: 1/8" = 1'-0" DATE: 3/7/16 SHEET: 2 OF 3 DRAWN BY: MJP CHECK BY: CD APP'D BY: JH DISK REF:	INSTALLER: HELICAL DRILLING, INC. 634 GRANITE STREET BRAINTREE, MA 02124 TEL: (781) 846-2110	GEOPIER LOCATION PLAN Mixed Use Development York and High Streets Portland, ME	SHEET NO. GNE-01207 GEO-1.2 ME-67265
--	---	---	--	--	--	---	---