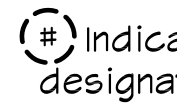
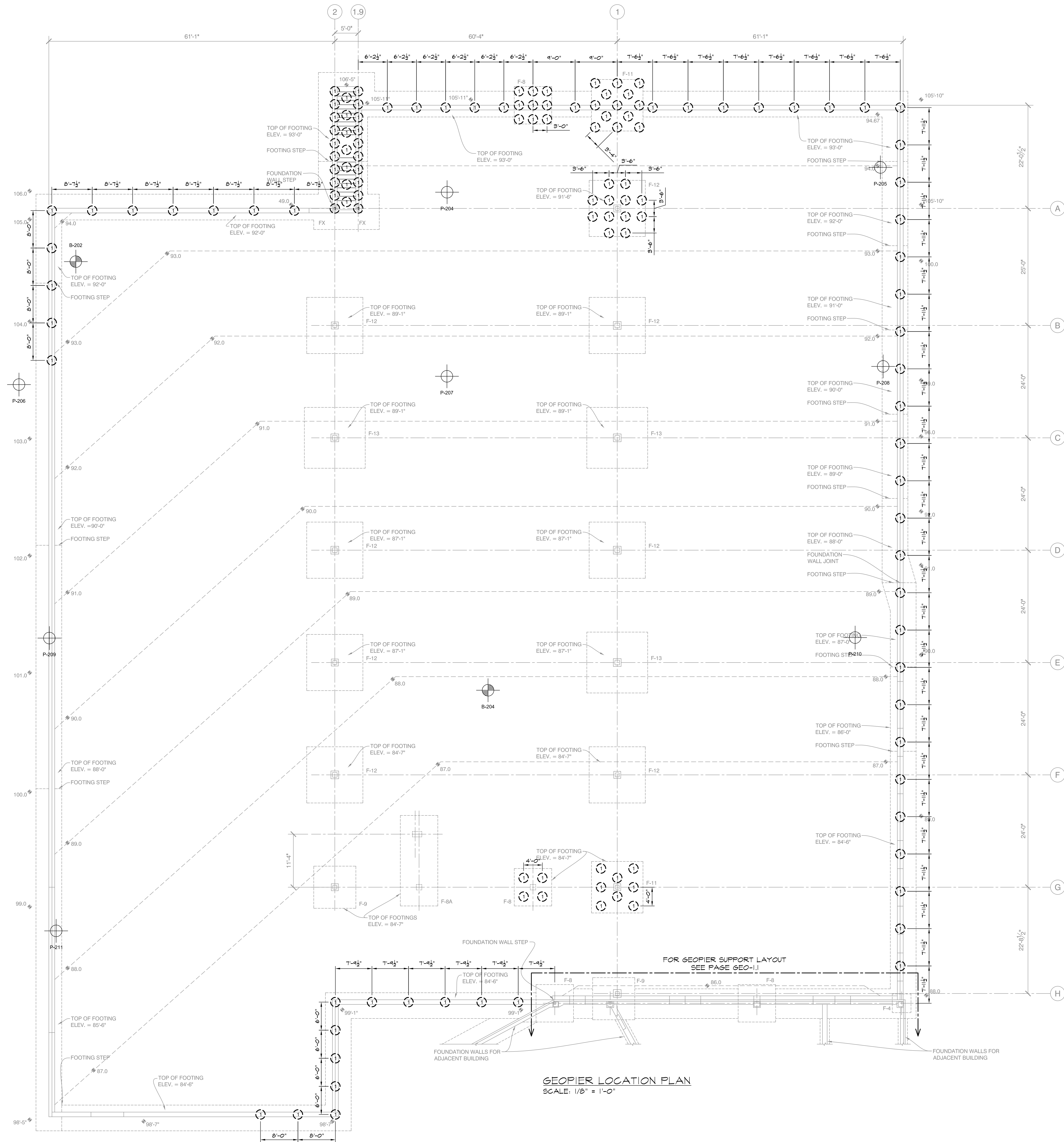
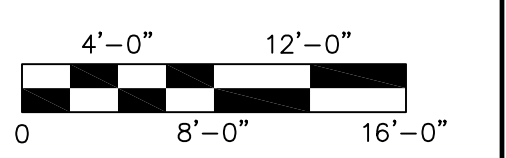


NOTES:

1. Geopier Ramped Aggregate Pier drawings based on structural drawing 651.01, Foundation Plan, prepared by Becker Structural Engineers, Inc., dated January 29, 2016. Loads received via email on February 8, 2016.
2. For subsurface exploration logs and locations, see design submittal booklet.
3. For all top and bottom of footing elevations, see plans prepared by Becker Structural Engineers, Inc.
4. Footing outlines are for information only. See structural plans for footing layout, dimensions and details.
5. See design submittal booklet for Ramped Aggregate Pier shaft lengths.
6. All existing and proposed utilities within and adjacent to the proposed building footprint shall be verified by the General Contractor and coordinated with the Geopier Foundation Installer before Ramped Aggregate Pier installation shall proceed.
7. A copy of this drawing is available on request for use in determining coordinate locations of individual piers that can be used with electronic survey equipment to stake out pier locations in the field. Questions that may pertain to discrepancies between coordinate locations of individual piers and the pier locations referenced to the overall building grid must be discussed and clarified with the Architect. However, should a discrepancy of 2 inches or less be found, the pier may be staked out at the coordinate location shown.
8. Ramped Aggregate Piers are located at the intersection of reference grid lines or at the centerline of strip footings unless dimensioned otherwise.
9.  indicates Ramped Aggregate Pier slab element location and designation.



GEOPIER LOCATION PLAN
SCALE: 1/8" = 1'-0"



DESIGN/BUILD GEOTECHNICAL
2 Mount Royal Ave., Suite 208
Marblehead, MA 01752
Tel: 508-481-3849
Fax: 508-460-1114
"DELIVERING THE GEOPIER FOUNDATION SYSTEM"

"Geopier" is the registered trademark of The Geopier Foundation Company, Inc. This drawing contains information proprietary to The Geopier Foundation Company, Inc. and its business, and is being furnished for the use of XXXX only in connection with this project. The information contained herein is not to be transmitted to any other organization unless specifically authorized in writing by The Geopier Foundation Company, Inc. Geopier is the property of The Geopier Foundation Company, Inc. and is protected under U.S. Patent No. 5,248,892 and other patents pending.



SCALE: 1/8" = 1'-0"
DATE: 02/11/16
SHEET: 2 of 3
DRAWN BY: MJP
CHKD BY: CD
APP'D BY: JH
DISK REF: #

INSTALLER:
HELICAL
HELICAL DRILLING, INC.
634 GRANITE STREET
BRAintree, MA 02124
TEL: (781) 840-2110

GEOPIER LOCATION PLAN
Mixed Use Development
York and High Streets
Portland, ME

SHEET NO.
GNE-01207
GEO-1.2
ME-22222