

OWNER / DEVELOPER
GLOBAL CONTENT PARTNERS
30 DANFORTH STREET
PORTLAND, MAINE 04101

PROJECT TITLE
INTERIOR FIT-UP FOR GLOBAL STUDIOS
54 DANFORTH STREET
PORTLAND, MAINE 04101

DRAWING TITLE
OCCUPANCY LOAD DIAGRAMS AND CALCULATION TABLES
CWS PROJ. NO.: 13424

REVISION DESCRIPTION	DATE

DRAWING NUMBER

LS1.02

SCALE: 1/8" = 1'-0"
DATE: 02/13/2015

LOCAL CASE STUDY DATA:

- SPACE GALLERY: CAPACITY: 300 STANDING / 130 SEATED
MEN'S ROOM HAS (1) TOILET, (1) URINAL
WOMEN'S ROOM HAS (2) TOILETS
- PORTLAND COMPANY: 300 PERSON CAPACITY
MEN'S ROOM HAS (1) TOILET, (1) URINAL
WOMEN'S ROOM HAS (2) TOILETS

PROPOSED FINAL FIXTURE COUNT FOR GLOBAL STUDIOS:

- OCCUPANT LOAD BASIS: 179 OCCUPANTS (90 MEN / 89 FEMALES)
- PROPOSED FIXTURES CONFIGURATION (1):
TOTAL MEN'S TOILETS: (1)
TOTAL MEN'S URINALS: (1)
TOTAL MEN'S LAVATORIES (1)
TOTAL WOMEN'S TOILETS: (3)
TOTAL WOMEN'S LAVATORIES (3)
- PROPOSED FIXTURES CONFIGURATION (2):
TOTAL MEN'S TOILETS: (2)
TOTAL MEN'S URINALS: (1)
TOTAL MEN'S LAVATORIES (2)
TOTAL WOMEN'S TOILETS: (2)
TOTAL WOMEN'S LAVATORIES (2)

E2 LOCAL CASE STUDY INFORMATION

REFERENCED FROM: SCALE: N/A

OCCUPANCY CALCULATIONS FOR KITCHEN 110 SIDE OF FACILITY						
SPACE	OCCUPANCY CLASSIFICATION	AREA	CALCULATED O.L.		ACTUAL DAILY STAFF AND PRODUCTION WORK	ACTUAL EVENT O.L.
			15 NET	100 GROSS		
KITCHEN 110	ASSEMBLY A-3	1,134 SF	76 PEOPLE		30 PEOPLE	50 PEOPLE
BUSINESS USE AREAS (103, 104, 110, 111)	BUSINESS	1092 SF		12 PEOPLE		
SUB-TOTALS		2,226 SF	76 PEOPLE	12 PEOPLE	30 PEOPLE	50 PEOPLE
TOTALS		2,226 SF	88 PEOPLE		30 PEOPLE	50 PEOPLE

FIXTURE	MAINE STATE INTERNAL PLUMBING CODE		INTERNATIONAL PLUMBING CODE 2009		MAINE STATE INTERNAL PLUMBING CODE		INTERNATIONAL PLUMBING CODE 2009		PROPOSED
	50% MALE / 50% FEMALE CONVERSION	43 MALES / 42 FEMALES	50% MALE / 50% FEMALE CONVERSION	15 MALES / 15 FEMALES	50% MALE / 50% FEMALE CONVERSION	25 MALES / 25 FEMALES	50% MALE / 50% FEMALE CONVERSION	25 MALES / 25 FEMALES	
MALE TOILETS	1	1	1	1	1	1	1	1	1
MALE URINALS	1	0	0	0	1	0	0	0	0
MALE LAVATORIES	1	1	1	1	1	1	1	1	1
FEMALE TOILETS	3	1	1	1	3	1	1	1	1
FEMALE LAVATORIES	1	1	1	1	1	1	1	1	1
DRINKING FOUNTAINS	1	1	1	1	1	1	1	0	0

* THERE ARE NO PROPOSED ALTERATIONS TO THE EXISTING TOILET ROOMS ON THE KITCHEN 110 SIDE OF THE FACILITY.
** ACCESS TO BOTTLED WATER WILL BE PROVIDED.

E4 OCCUPANCY LOAD CALCULATIONS TABLE & PLUMBING FIXTURE CALCULATIONS: KITCHEN 110 AREA

REFERENCED FROM: SCALE: N/A

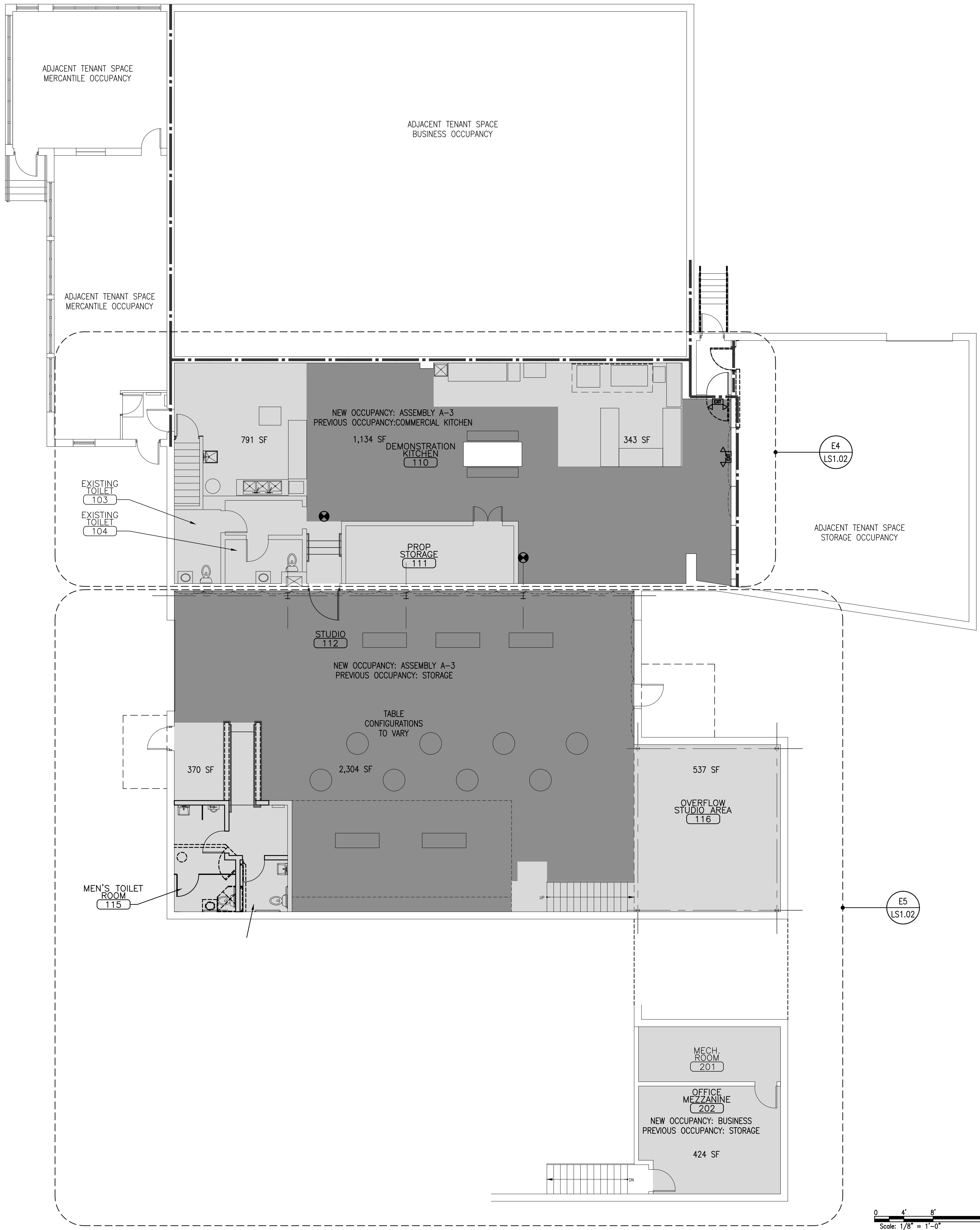
OCCUPANCY CALCULATIONS FOR STUDIO 112 SIDE OF FACILITY						
SPACE	OCCUPANCY CLASSIFICATION	AREA	CALCULATED O.L.		ACTUAL DAILY STAFF AND PRODUCTION WORK	ACTUAL EVENT O.L.
			15 NET	100 GROSS		
STUDIO 112	ASSEMBLY A-3	2304 SF	154 PEOPLE		27 PEOPLE	150 PEOPLE
BUSINESS USE AREAS (114, 115, 116)	BUSINESS	2040 SF		21 PEOPLE		
BUSINESS USE AREAS (MEZZANINE 202)	BUSINESS	424 SF		4 PEOPLE	3 PEOPLE	
SUB-TOTALS		4,768 SF	154 PEOPLE	25 PEOPLE	30 PEOPLE	150 PEOPLE
TOTALS		4,768 SF	179 PEOPLE		30 PEOPLE	150 PEOPLE

FIXTURE	MAINE STATE INTERNAL PLUMBING CODE		INTERNATIONAL PLUMBING CODE 2009		MAINE STATE INTERNAL PLUMBING CODE		INTERNATIONAL PLUMBING CODE 2009		PROPOSED
	50% MALE / 50% FEMALE CONVERSION	90 MALES / 89 FEMALES	50% MALE / 50% FEMALE CONVERSION	15 MALES / 15 FEMALES	50% MALE / 50% FEMALE CONVERSION	77 MALES / 76 FEMALES	50% MALE / 50% FEMALE CONVERSION	77 MALES / 76 FEMALES	
MALE TOILETS	1	1	1	1	1	1	1	1	1
MALE URINALS	1	0	0	0	1	0	0	0	0
MALE LAVATORIES	1	1	1	1	1	1	1	1	1
FEMALE TOILETS	4	2	3	1	4	2	2	1	1
FEMALE LAVATORIES	1	1	1	1	1	1	1	1	1
DRINKING FOUNTAINS	1	1	1	1	1	1	1	0	0

* THE EXISTING TOILET ROOM WILL BE REMOVED SUCH AS TO PROVIDE TWO NEW H/C COMPLIANT TOILET ROOM SPACES FOR THE FACILITY.
** ACCESS TO BOTTLED WATER WILL BE PROVIDED.

E5 OCCUPANCY LOAD CALCULATIONS TABLE & PLUMBING FIXTURE CALCULATIONS: STUDIO 112 AREA

REFERENCED FROM: SCALE: N/A



A5 OCCUPANCY LOAD DIAGRAM - FIRST FLOOR & MEZZANINE

REFERENCED FROM: SCALE: 1/8" = 1'-0"