

OWNER / DEVELOPER
GLOBAL CONTENT PARTNERS
30 DANFORTH STREET
PORTLAND, MAINE 04101

PROJECT TITLE
INTERIOR FIT-UP FOR GLOBAL STUDIOS
54 DANFORTH STREET
PORTLAND, MAINE 04101

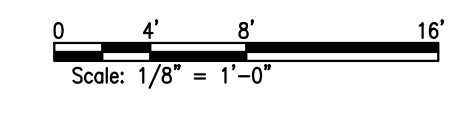
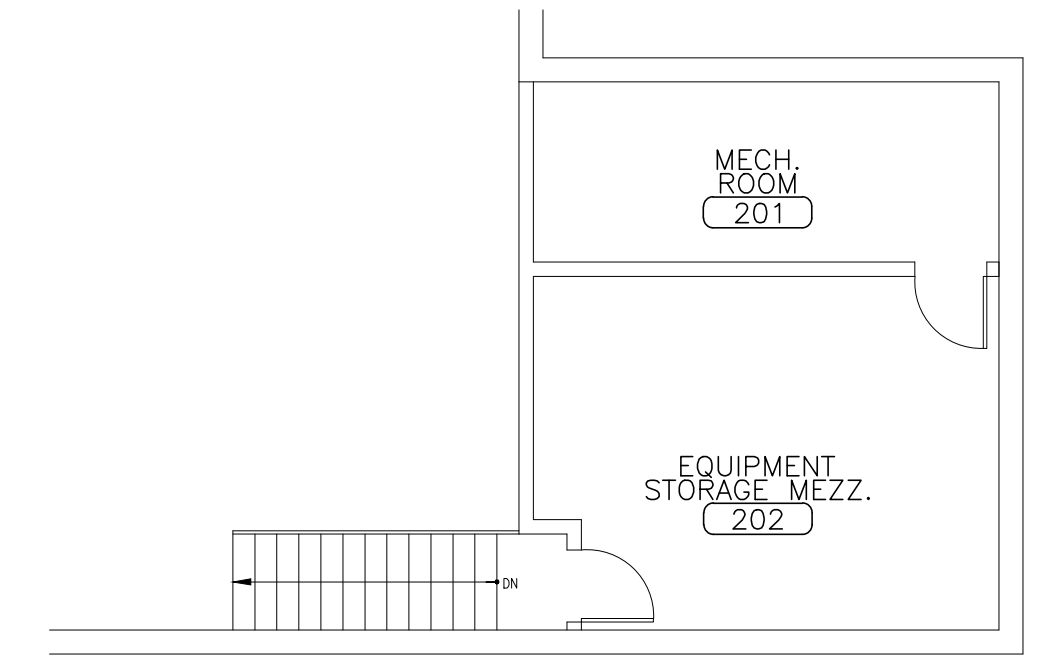
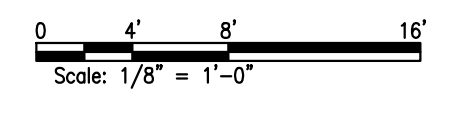
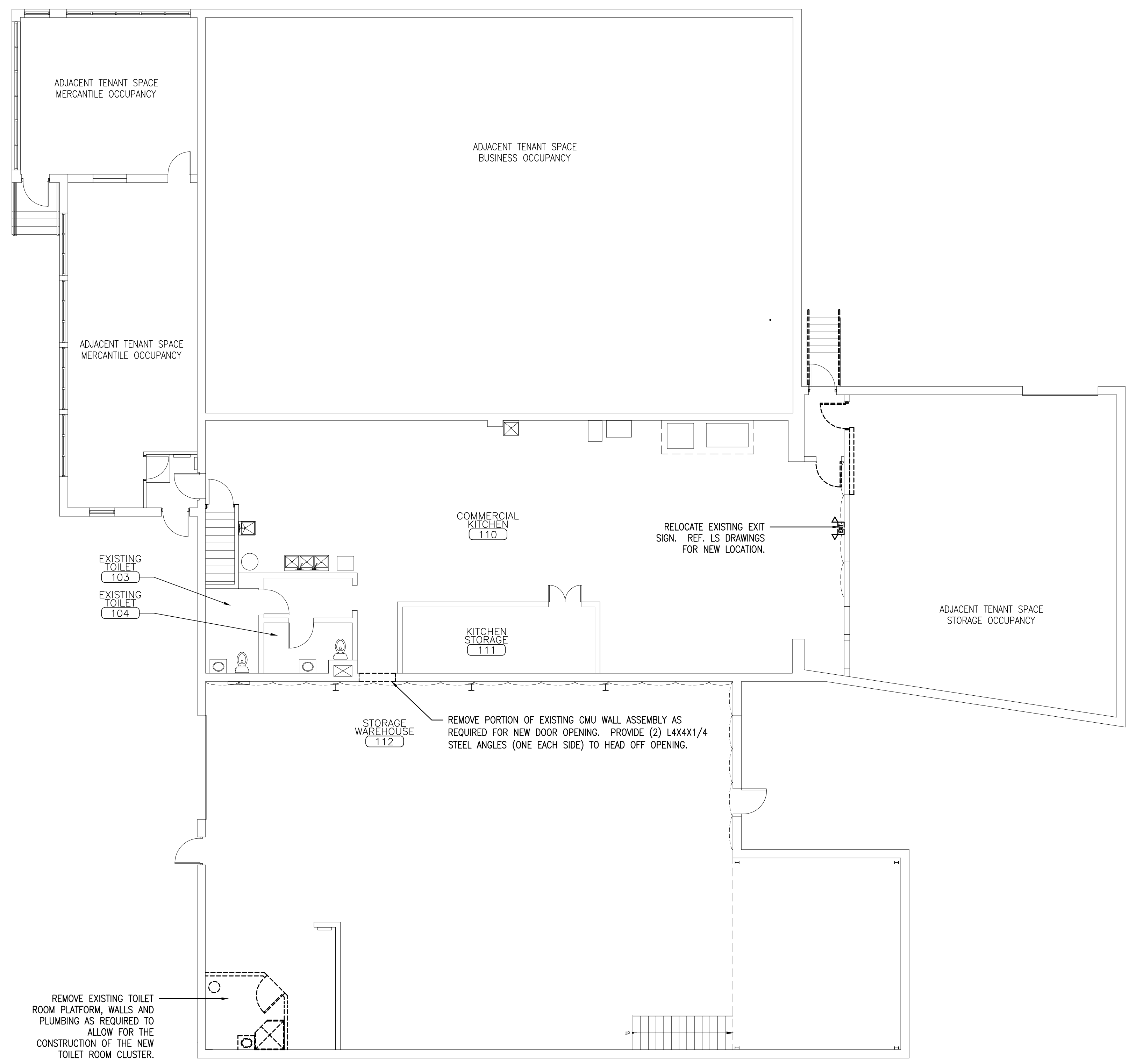
DRAWING TITLE
REMOVALS FLOOR PLANS
CWS PROJ. NO.: 13424

REVISION DESCRIPTION	DATE

DRAWING NUMBER

AD1.10

SCALE: 1/8" = 1'-0"
DATE: 02/13/2015



A5 REMOVALS FLOOR PLAN
REFERENCED FROM: SCALE: 1/8" = 1'-0"

G5 REMOVALS MEZZANINE FLOOR PLAN
REFERENCED FROM: SCALE: 1/8" = 1'-0"