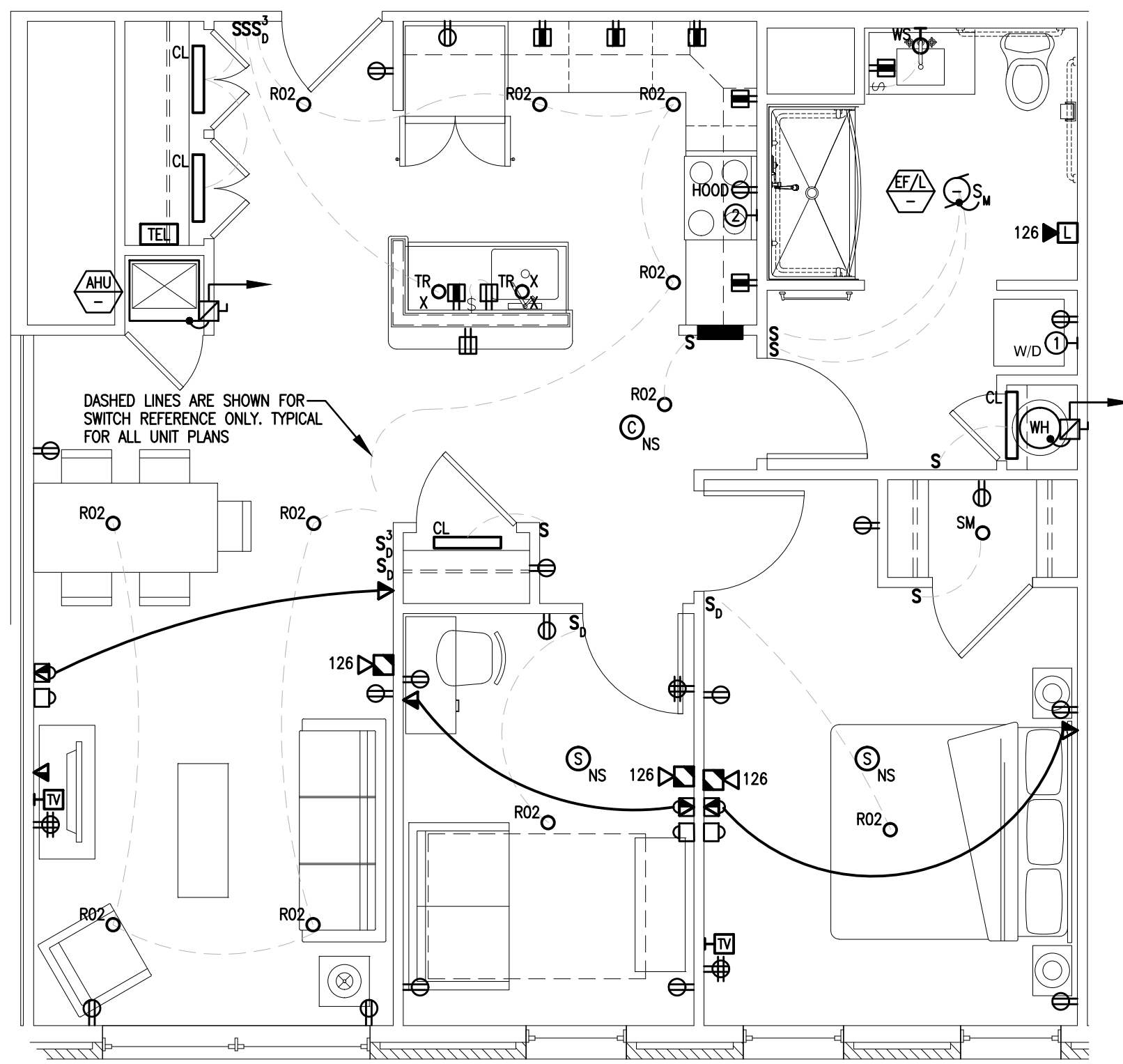
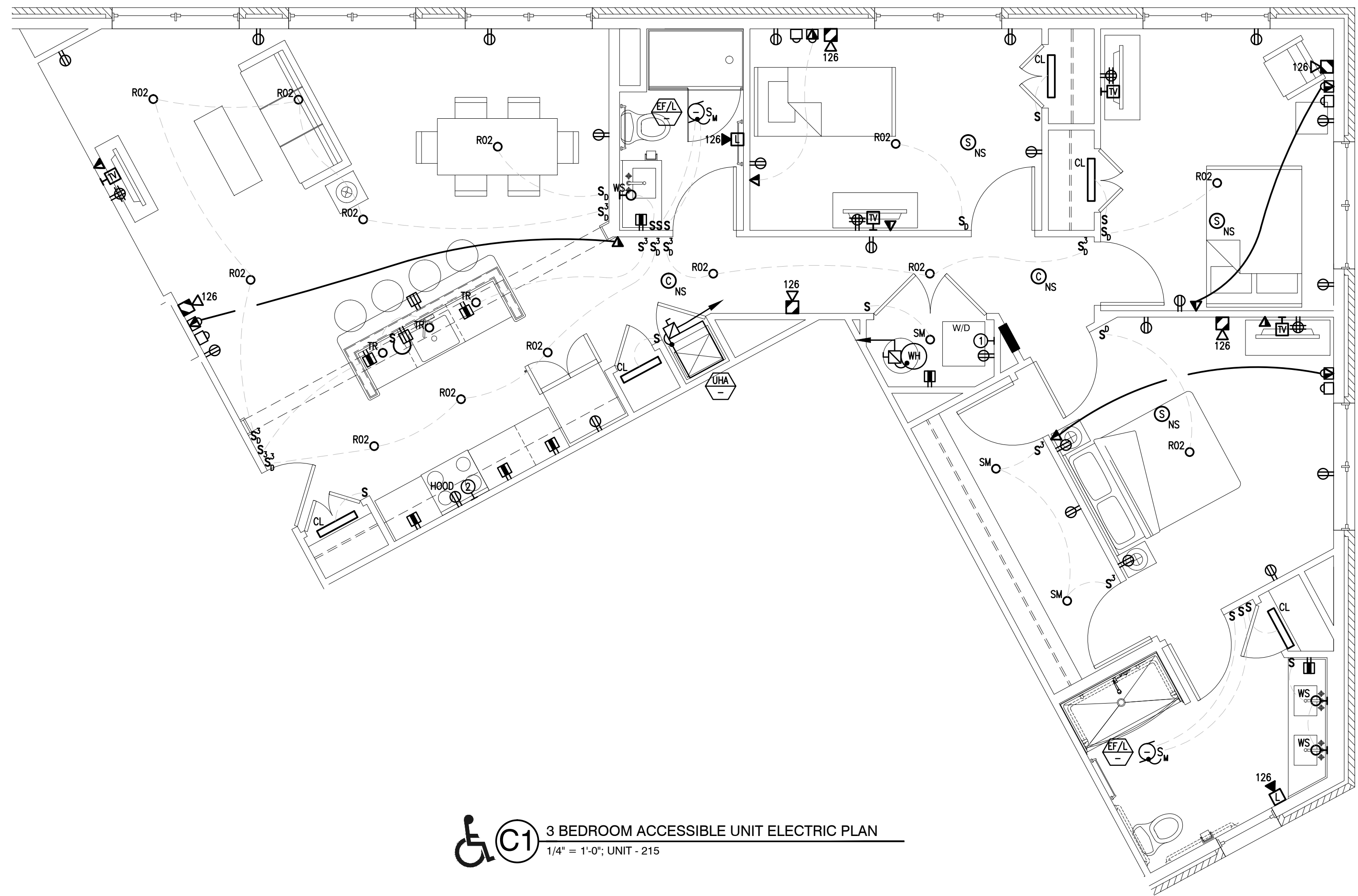


TYPICAL UNIT PLAN WITH CIRCUITING SHOWN AS REQUIRED.

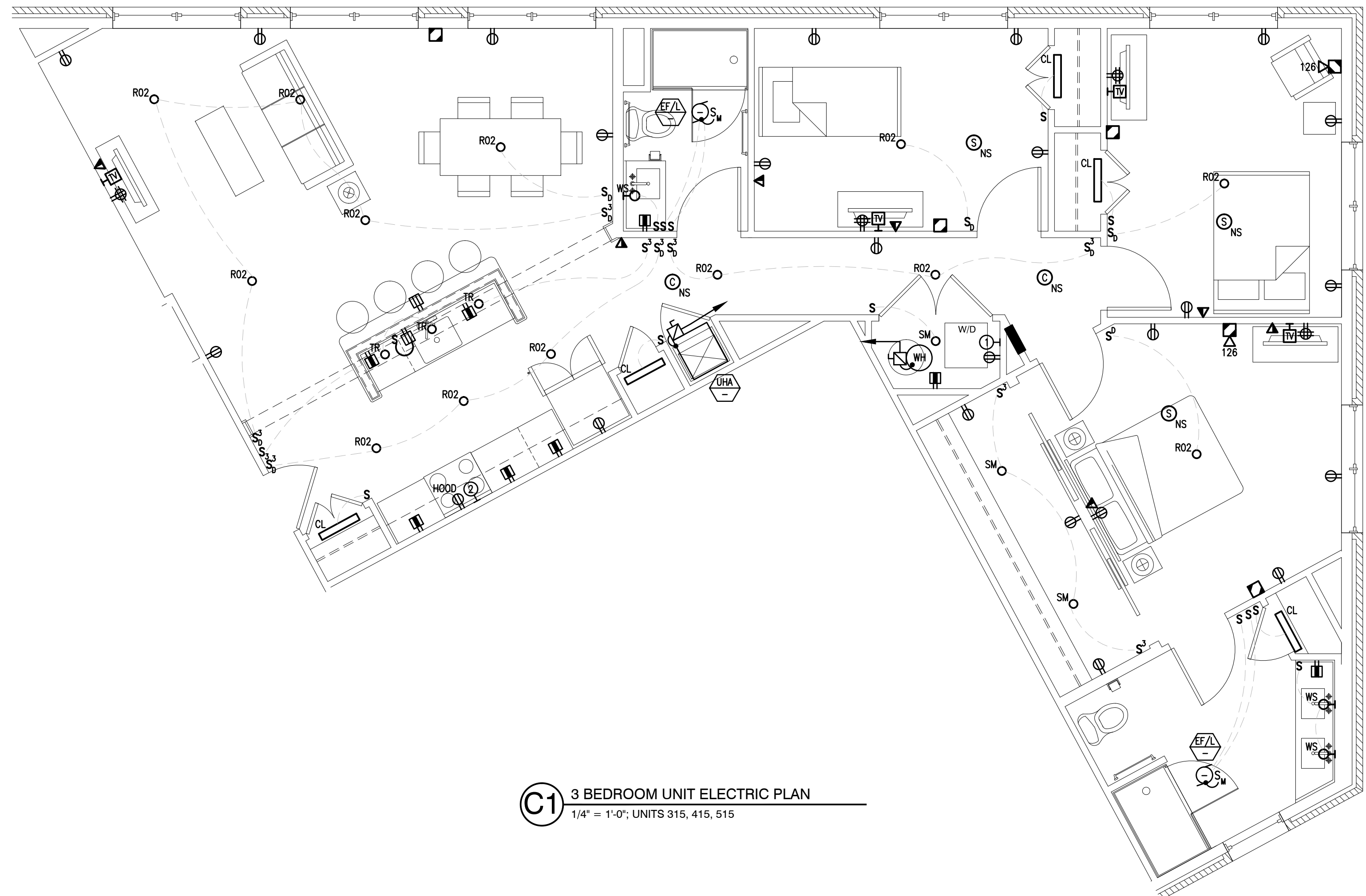
**B2** 2 BEDROOM ACCESSIBLE UNIT ELECTRIC PLAN  
1/4" = 1'-0"; UNIT 308



**A4** 1 BEDROOM ACCESSIBLE UNIT ELECTRIC PLAN  
1/4" = 1'-0"; UNIT 504



**C1** 3 BEDROOM ACCESSIBLE UNIT ELECTRIC PLAN  
1/4" = 1'-0"; UNIT - 215



**C1** 3 BEDROOM UNIT ELECTRIC PLAN  
1/4" = 1'-0"; UNITS 315, 415, 515