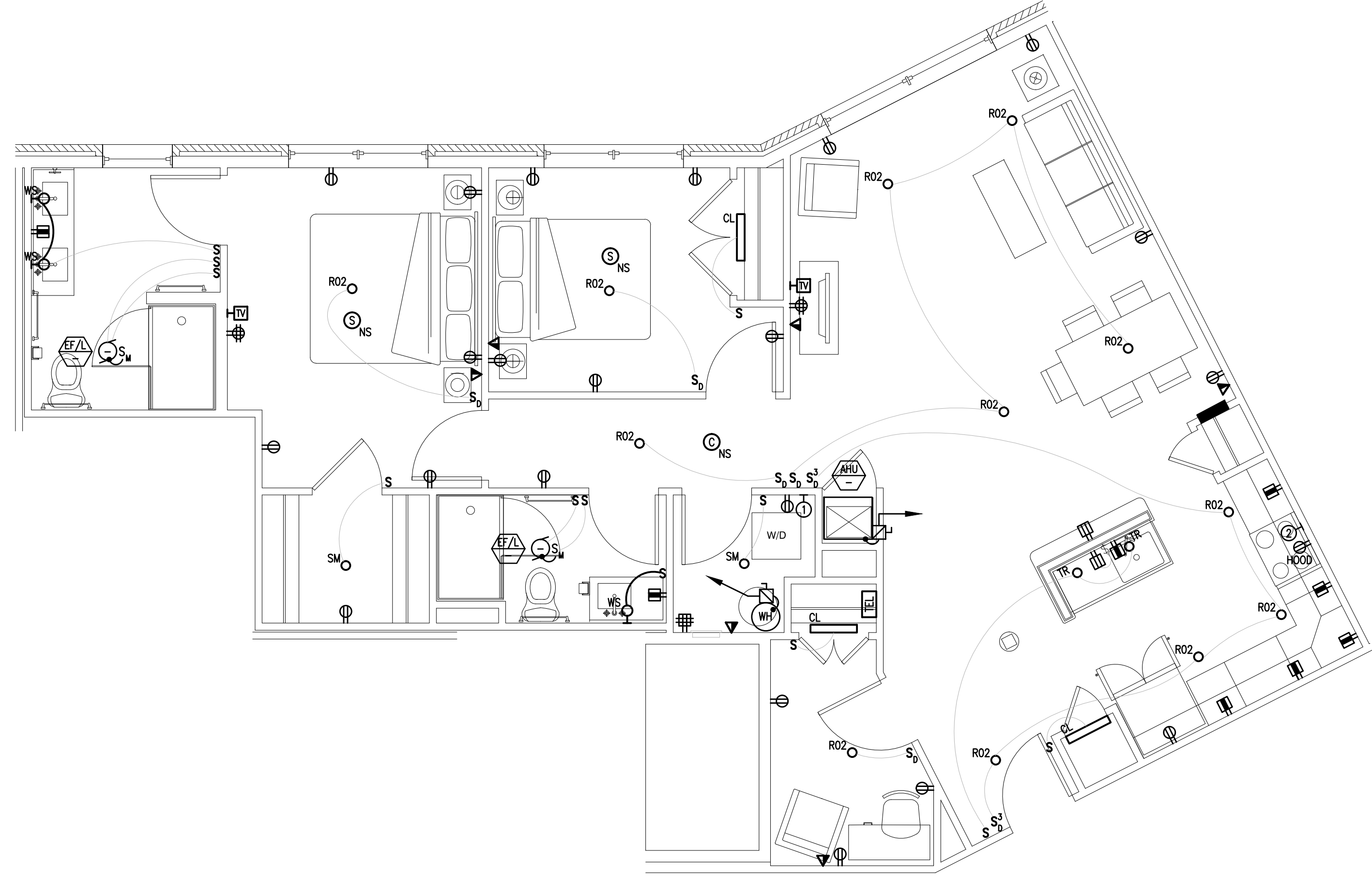
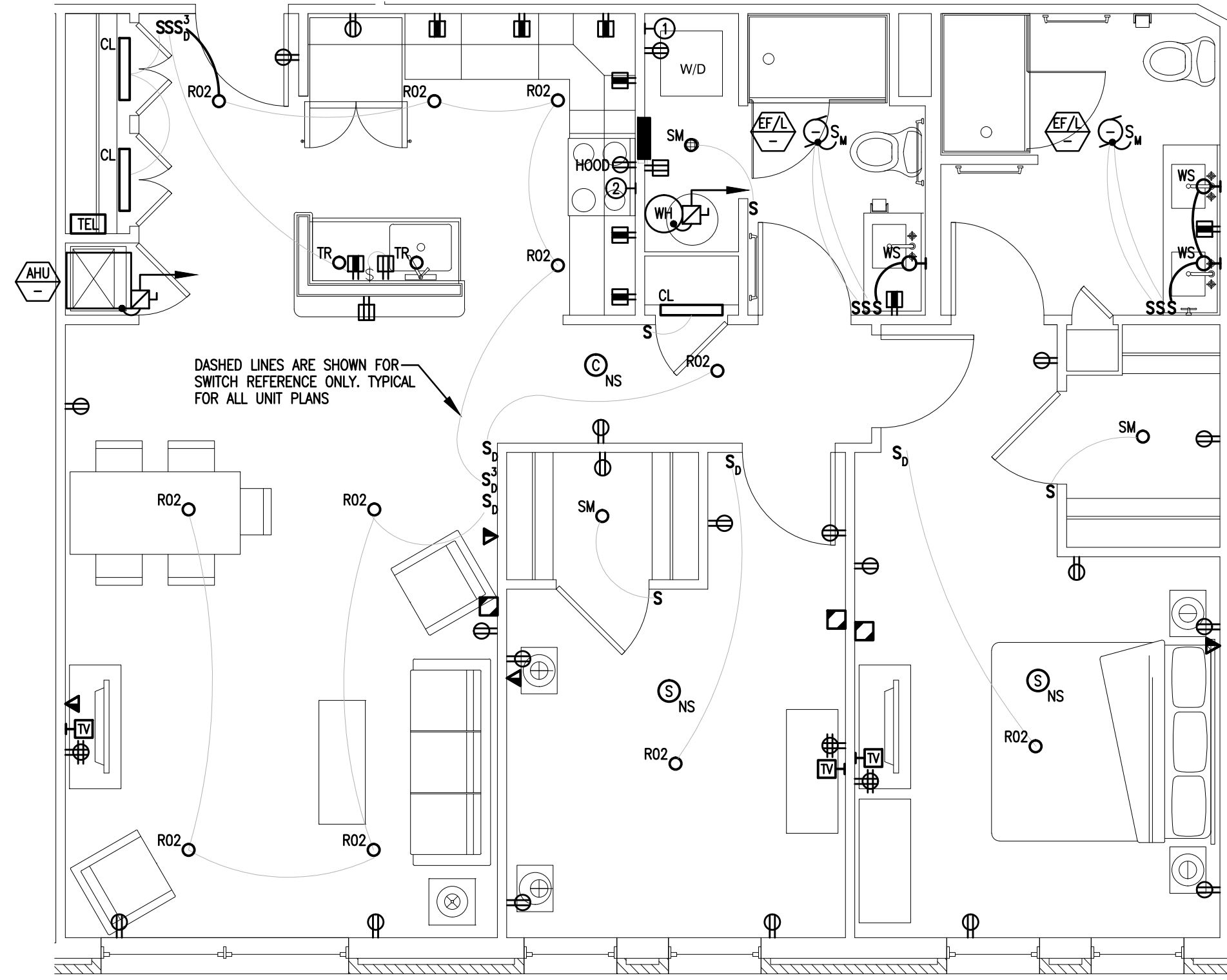


B5 2 BEDROOM UNIT ELECTRIC PLAN
1/4" = 1'-0"; UNITS 201, 203, 301, 303, 401, 403, 501, & 503

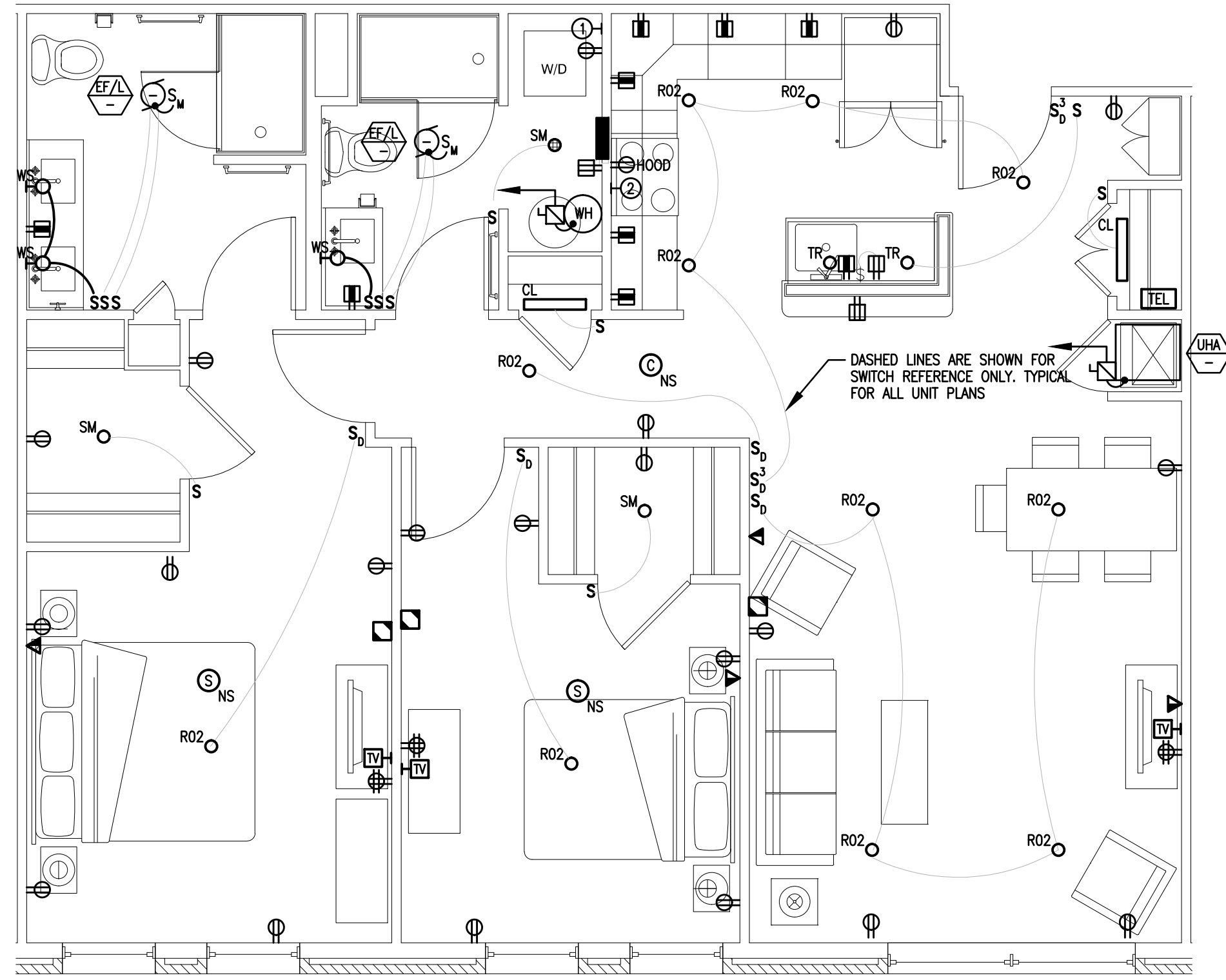


B4 2 BEDROOM UNIT ELECTRIC PLAN
1/4" = 1'-0"; UNITS 305, 405, & 505

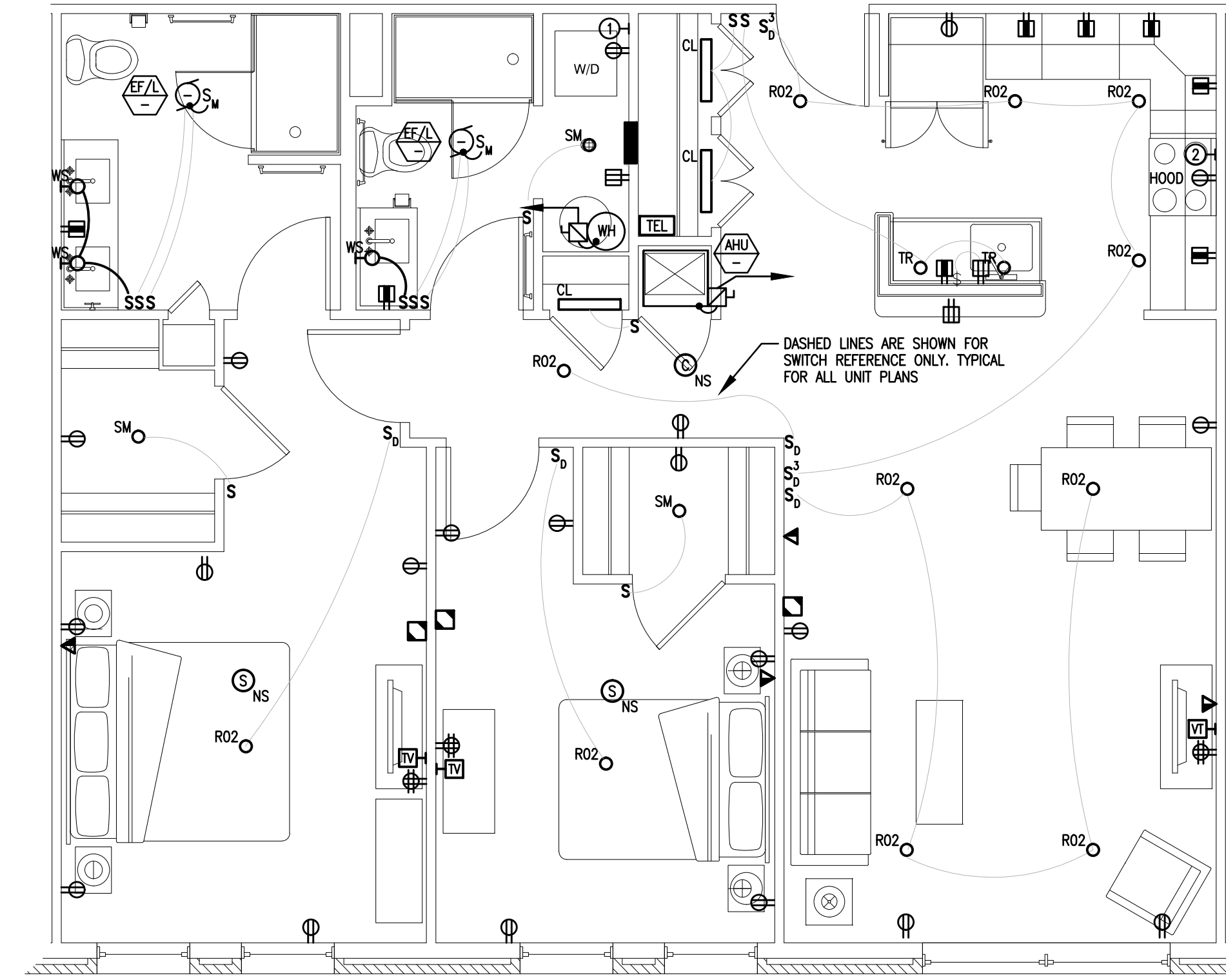
REFER TO SHEET E3.03 FOR TYPICAL UNIT PLAN WITH CIRCUITING SHOWN AS REQUIRED.



B3 2 BEDROOM UNIT ELECTRIC PLAN
1/4" = 1'-0"; UNITS 216, 316, 416, & 516



B2 2 BEDROOM UNIT ELECTRIC PLAN
1/4" = 1'-0"; UNITS 208, 209, 309, 408, 409, 508, & 509



B1 2 BEDROOM UNIT ELECTRIC PLAN
1/4" = 1'-0"; UNITS - 210, 211, 212, 213, 214, 310, 311, 312, 313, 314, 410, 411, 412, 413, 414, 510, 511, 512, 513, & 514

REVISION:

ISSUED:
11.23.16 - Issue for Permit

project architect: ---
drawn by: CMF

ELECTRICAL
UNITS

sheet number:

E3.02