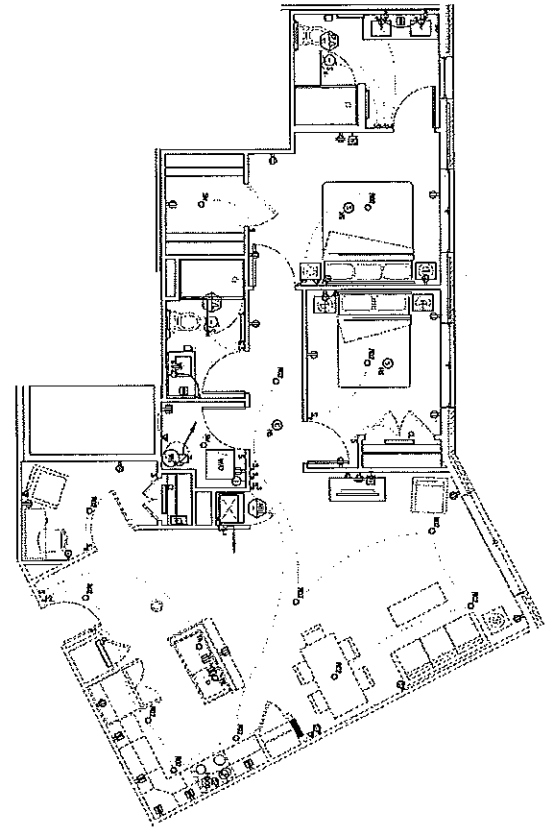
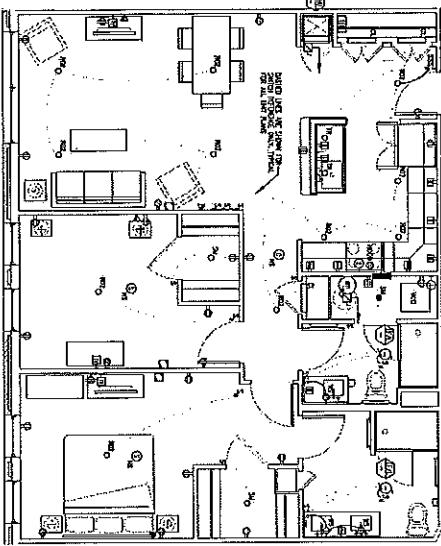


B5 1 BEDROOM UNIT ELECTRIC PLAN
 1/2" = 1'-0" UNITS. SEE OVER AND SIDE OF DRAWING FOR NOTES.

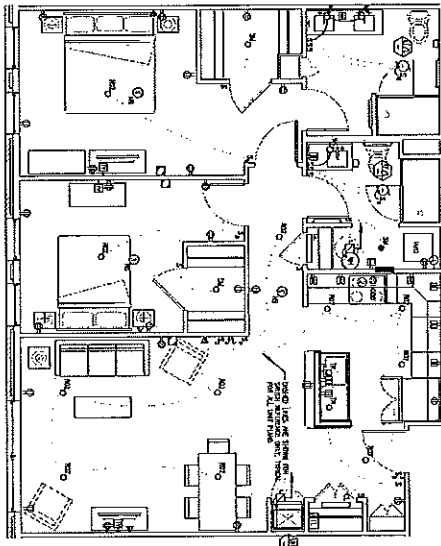
WORK IS SHOWN CLOSE TO WALLS, BUT UNIT PLAN MAY SHOW CHANGING SOME OF THE DETAILS.



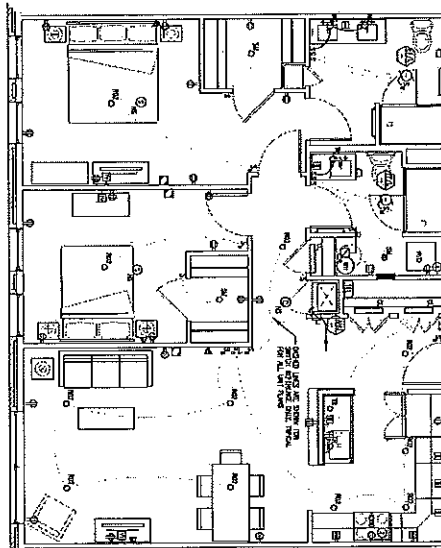
B6 1 BEDROOM UNIT ELECTRIC PLAN
 1/2" = 1'-0" UNITS. SEE OVER & SIDE




B9 2 BEDROOM UNIT ELECTRIC PLAN
 1/2" = 1'-0" UNITS. SEE OVER AND SIDE



B2 2 BEDROOM UNIT ELECTRIC PLAN
 1/2" = 1'-0" UNITS. SEE OVER AND SIDE



B1 2 BEDROOM UNIT ELECTRIC PLAN
 1/2" = 1'-0" UNITS. SEE OVER AND SIDE

E3.02	ELECTRICAL UNITS	ISSUED: 11.23.16 - Issue for Permit	REVISION:	Mixed Use Development	 <p>BLW BLW Engineers, Inc. 811 Green Point, Portland, Maine 04101 1000 Commercial Street, Portland, ME 04101 1-781-442-4311 • FAX: 781-442-4300 www.blw-engineers.com</p>
	PROJECT NO. 16-001	DATE: 11/23/16	DRAWN BY: JMF	York & High Street Portland, Maine	