
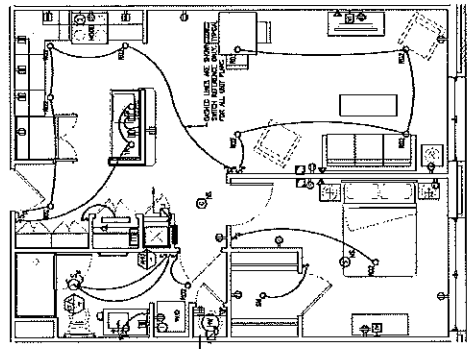
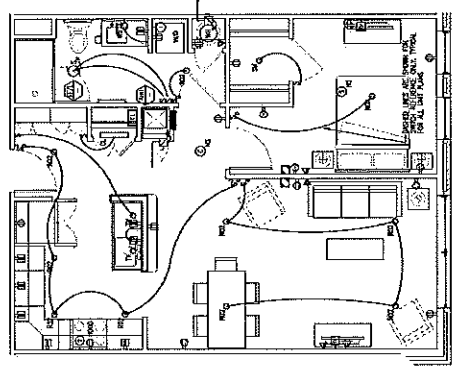
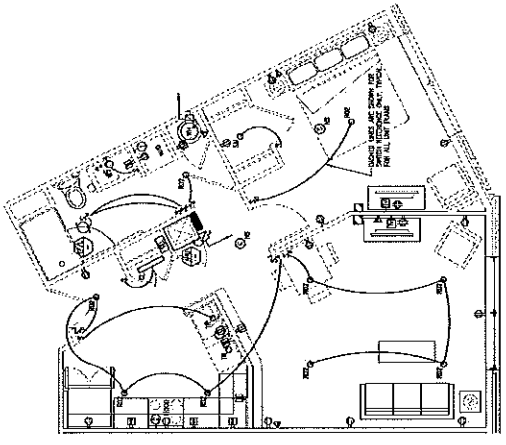
 BLW Engineers, Inc. 101 Green Street, Suite 101 Portland, Maine 04101 207.633.1111 www.blw-engineers.com		Mixed Use Development York & High Street Portland, Maine		REVISION:	ISSUES: 11.23.10 - Issue for Permit	DRAWN BY: CMF	ELECTRICAL UNITS	E3.01
		PROJECT NUMBER:						



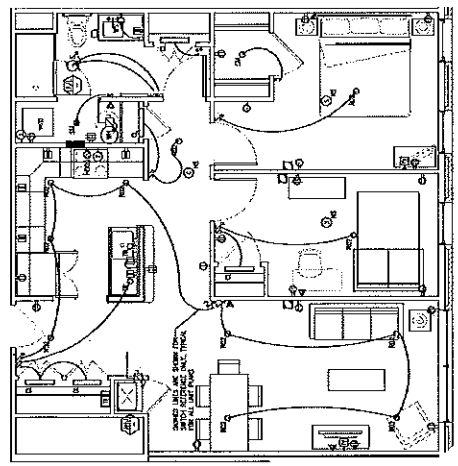
A1 1 BEDROOM UNIT ELECTRIC PLAN
 10'0" x 10'0" UNITS: 303, 304, 305, 306



A2 1 BEDROOM UNIT ELECTRIC PLAN
 10'0" x 10'0" UNITS: 307, 307, 307, 307, 307



A3 1 BEDROOM UNIT ELECTRIC PLAN
 10'0" x 10'0" UNITS: 308, 309, 310, 311



A4 1 BEDROOM UNIT ELECTRIC PLAN
 10'0" x 10'0" UNITS: 312, 313, 314, 315

NOTE TO CHECK WITH THE OWNER FOR ALL THE THING FOR ALL THE THING AT RESULTS