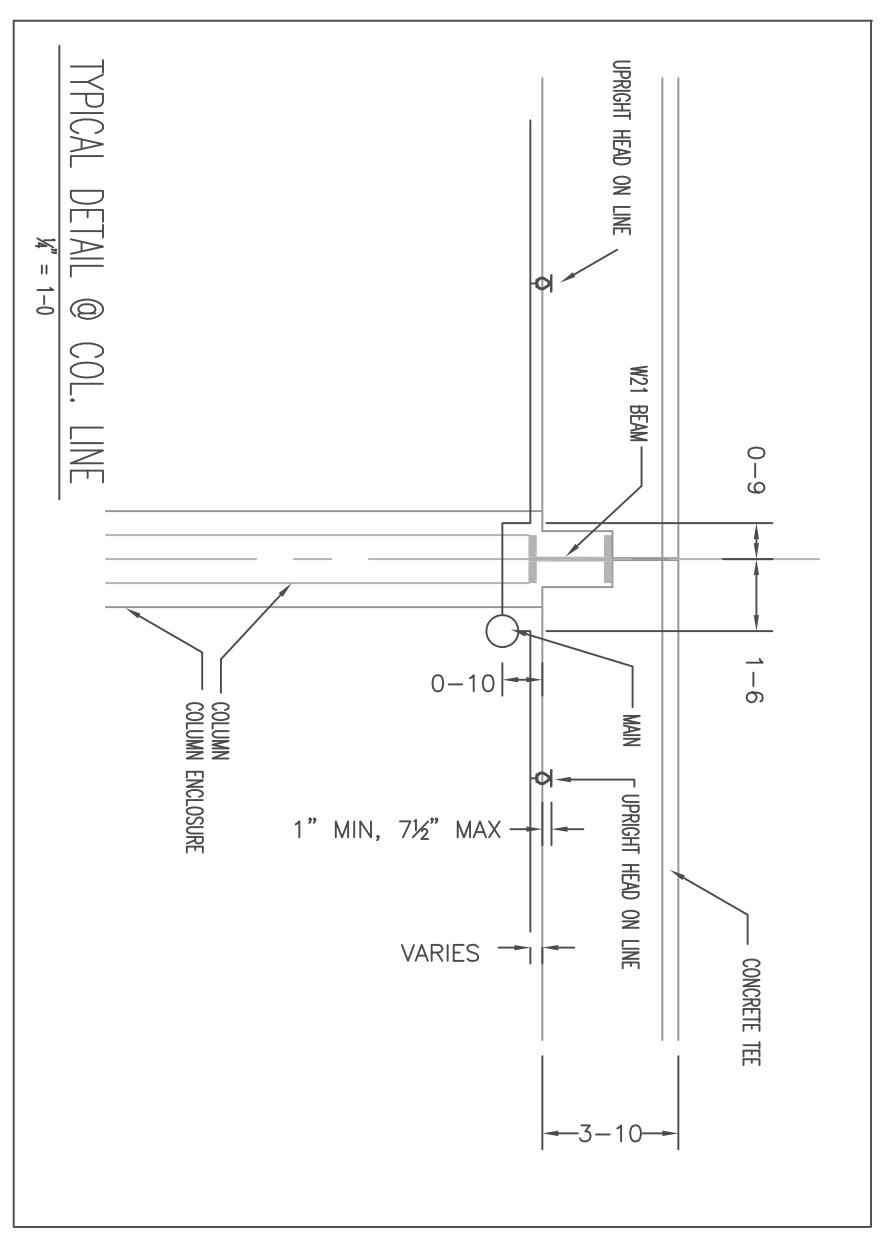
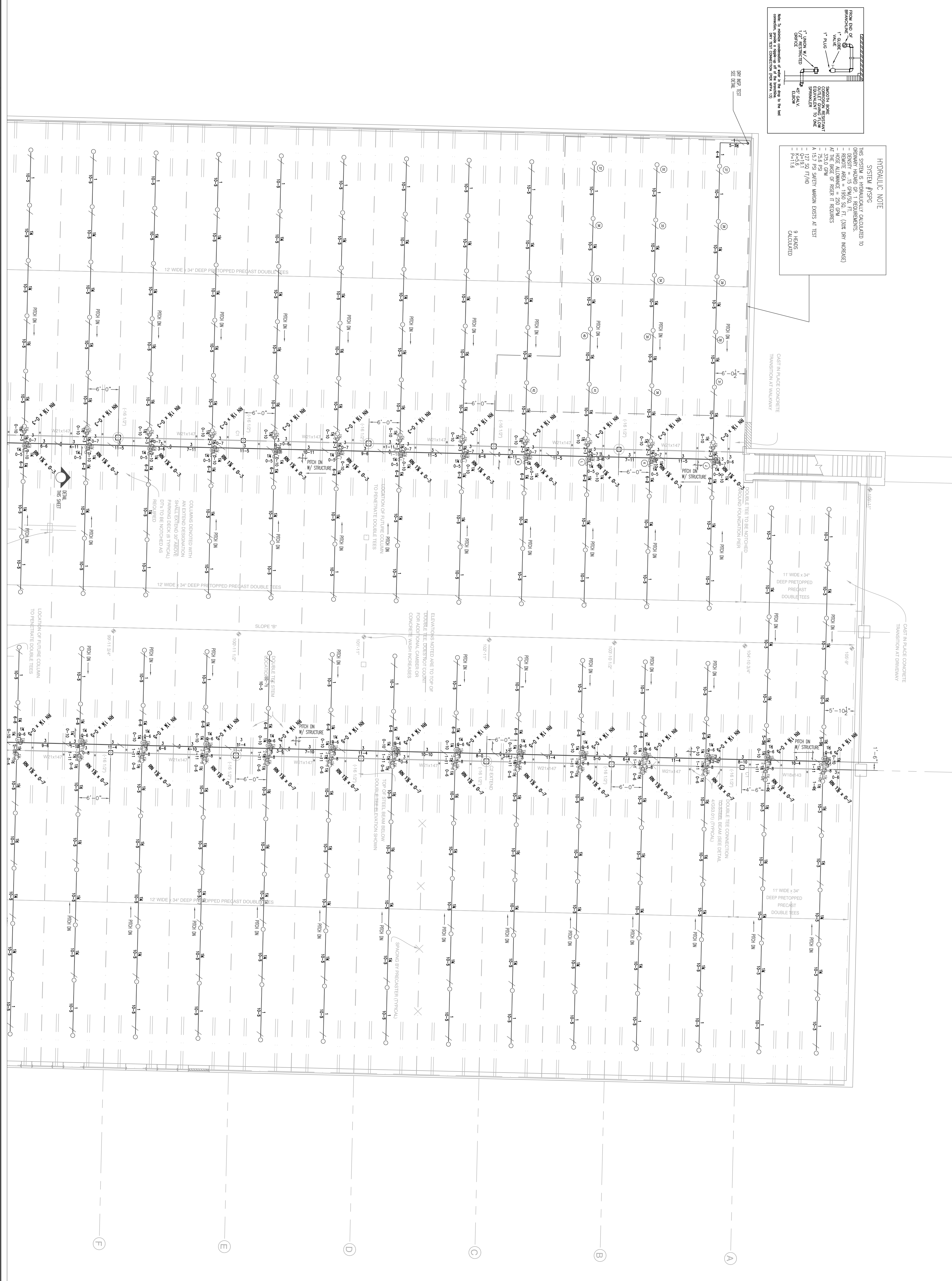


HYDRAULIC NOTE

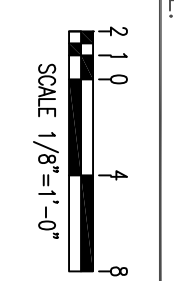
THE SYSTEM PRESSURE IS CALCULATED TO BE 15.0 PSI AT THE MOST REMOTE POINT. THE SYSTEM PRESSURE IS 15.0 PSI AT THE MOST REMOTE POINT. THE SYSTEM PRESSURE IS 15.0 PSI AT THE MOST REMOTE POINT.

9 HAZARDOUS



PLANS PREPARED BY:
BRIAN BENOIT
NICET LEVEL 3 CERT #075934

THESE PLANS ARE SUBJECT TO MINOR DEVIATIONS, DUE TO COORDINATION AND/OR FIELD CONDITIONS, NOT AFFECTING SCOPE OF WORK OR CODE COMPLIANCE.



8 NORTH WENTWORTH AVENUE LECONGONERRY, NH 03253
PH: (603) 432-8221 FAX: (603) 434-3194
WEBSITE: HAMPSHIRE.FIRE.COM
MSS VERMONT CERTIFIED 04/25/8

WATER SUPPLY DATA

Static pressure	100	psi
Pressure loss	100	psi
Flow	100	gpm
Elevation	310.0	ft
Time	2:15:16	Time 10:AM
Information by	Portland Water Dept. Maine Dept.	

SPRINKLERS

From This Sheet	225	Description	From This Job See Sheet 1
Standard	225	RELIEF VALVE (1.5\"/>	

Sheet 2, Parking Structure

Contract No.	48303HE
Drawn By	Benoit
Scale	1/8\"/>
Date	8/17/16
Approved by	ME SPMO

Project:
York Street
101 York Street
Portland, ME 04101

Contractor:
Opeshee Construction
11 Corporate Drive
Belmont, NH 03220