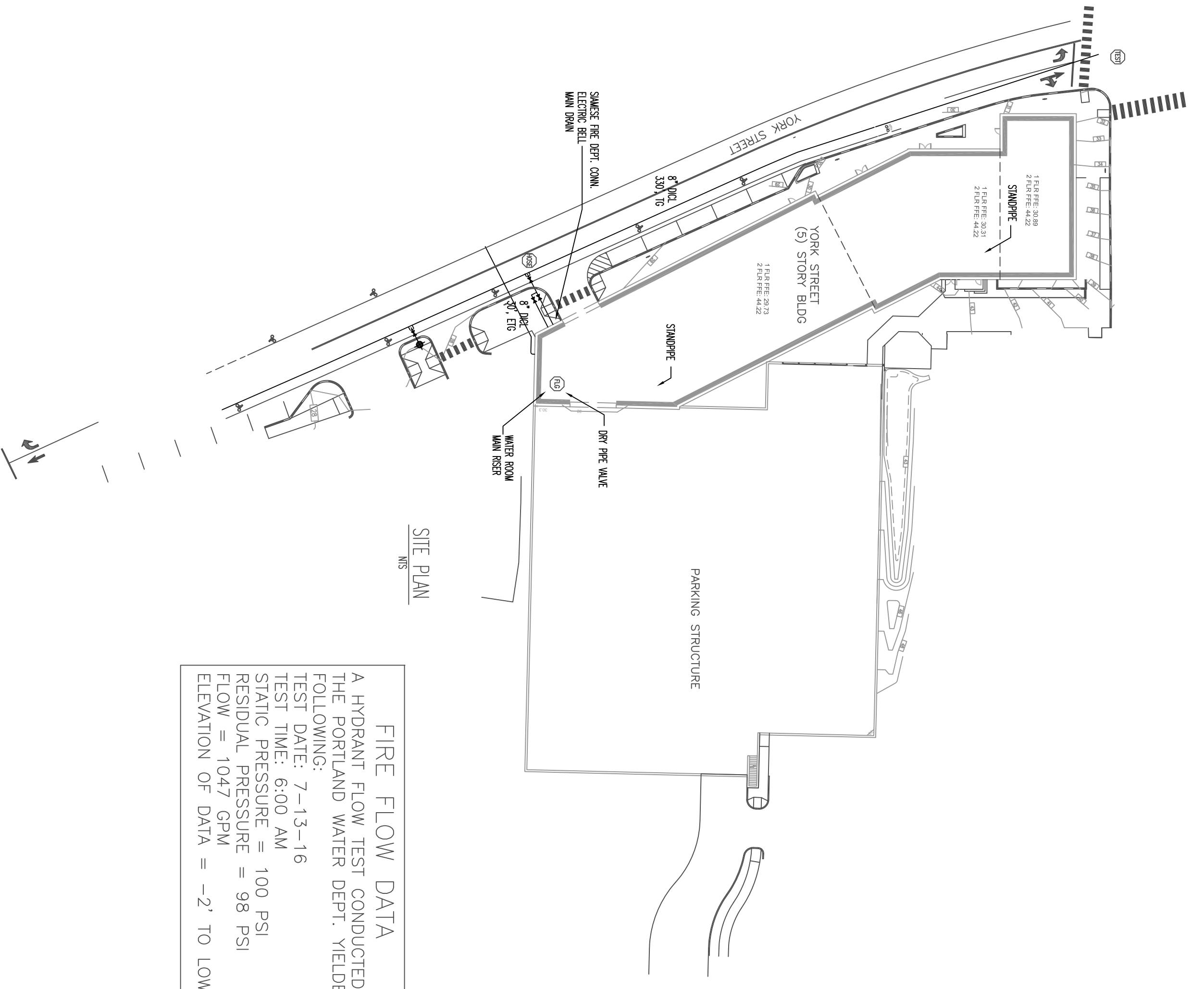


### UNDERGROUND DETAIL NOT TO SCALE



**FIRE FLOW DATA**  
A HYDRANT FLOW TEST CONDUCTED BY  
THE PORTLAND WATER DEPT. YIELDED THE  
FOLLOWING:  
TEST DATE: 7-13-16  
TEST TIME: GOOD AM  
RESIDUAL PRESSURE = 100 PSI  
FLOW = 1047 GPM  
ELEVATION OF DATA = -2' TO LOWER FF

**WATER SUPPLY DATA**

Static pressure	100	psi
Residual pressure	98	psi
Location	1047	gpm
Elevation	2-10'±	
Information by	Portland Water Dept. Maine Dept.	
Date	7-13-16	Time 10AM

**SPRINKLERS**

From This Sheet	0	From This Job	1008
Symbol		Description	

**Drawing**

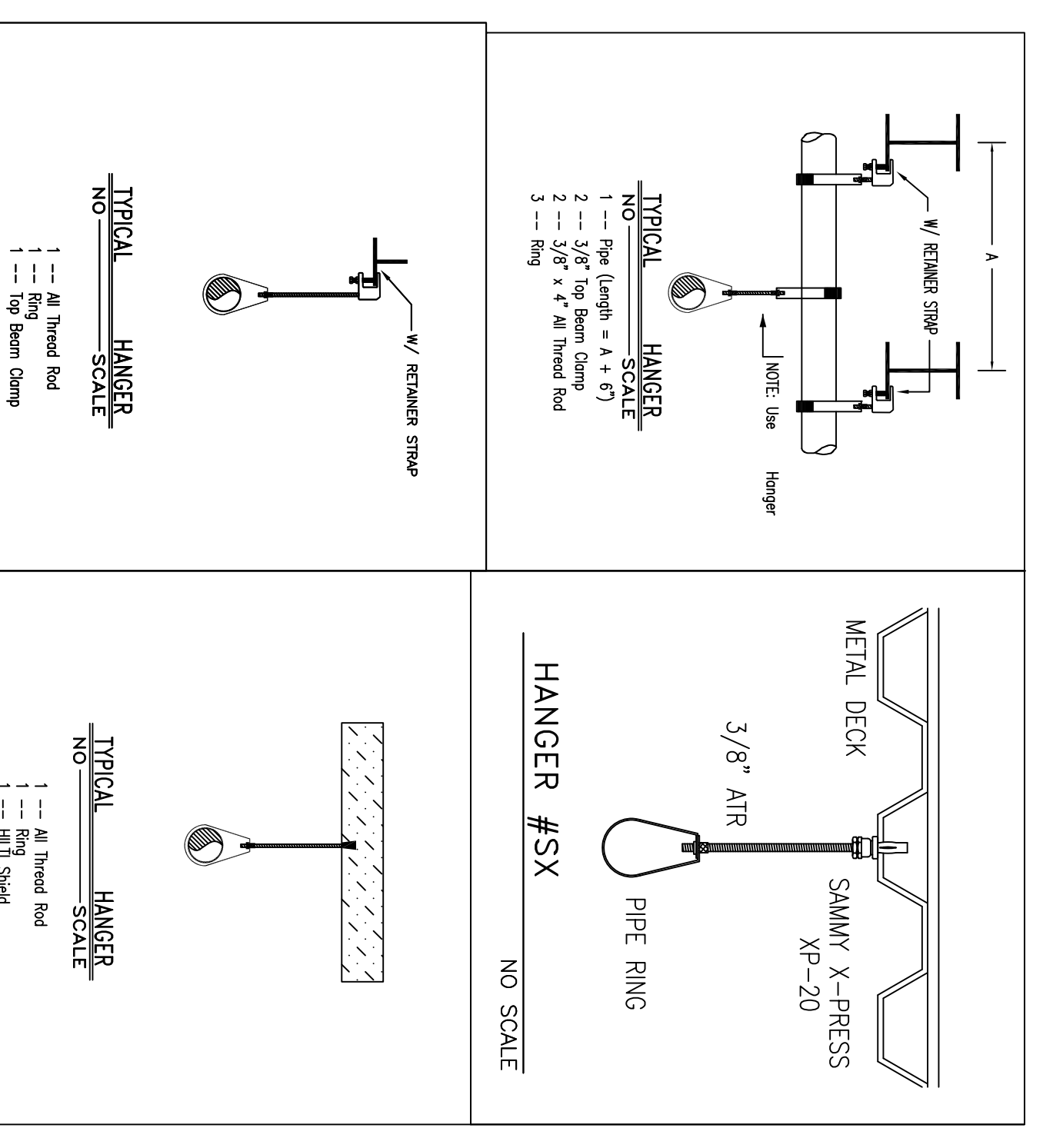
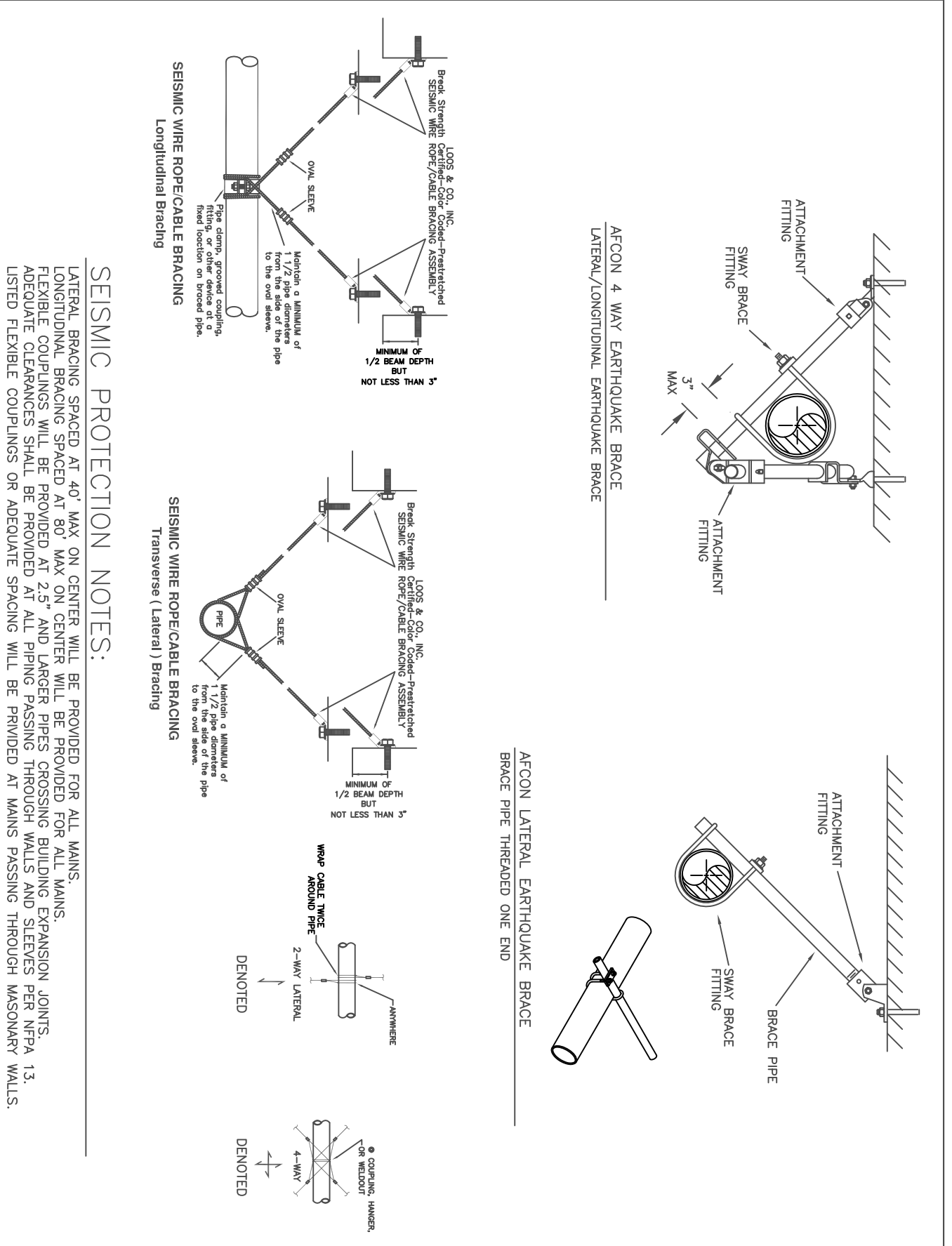
Sheet	1	Site Plan, Notes, Details
Contract No.	48300HE	
Drawn By	Borholt	
Scale	1/8" = 1'-0"	
Date	6/17/16	
Approved by	ME SPMO	

**Project:**

101 York Street
Portland, ME 04101
Contract with:
Openche Construction
11 Corporate Drive
Bethel, NH 03220

**FIRE PROTECTION ENGINEER'S STAMP**

PLANS PREPARED BY:	ERIC BENNETT
NICET LEVEL:	3 CERT. #075934
THESE PLANS ARE SUBJECT TO MINOR	
REVISIONS DUE TO COORDINATION AND/OR	
FIELD CONDITIONS, NOT AFFECTING SCOPE OF	
WORK OR CODE COMPLIANCE.	



- 4" Main: Lateral Brace = 466 lbs. per ft. x 40'-0" = 2709 lbs. x 1.4 (CB factor) = 3973 lbs to be braced. Longitudinal brace = 6.77 lbs. per ft. x 40'-0" = 2709 lbs. x 1.4 (CB factor) = 3973 lbs. to be braced.
- 3" Main: Use loss & Co. #188 or #18c tapered connection. Lateral Brace = 318 lbs. per ft. x 40'-0" = 12704 lbs. to be braced. Longitudinal brace = 1.67 lbs. per ft. x 84'-0" = 140.28 lbs. to be braced. TOTAL = 26732 lbs. to be braced. USE LOSS & CO. #18800 @45 (MIN) INTO CONCRETE W/ BOLT (MAX LOAD = 778 LBS) LONGITUDINAL BRACE = 318 LBS PER FT. x 80'-0" = 2544 LBS TO BE BRACED. USE LOSS & CO. #18800 @45 (MIN) INTO CONCRETE W/ BOLT (MAX LOAD = 778 LBS) 2x2 MAIN: LATERAL BRACE = 295 LBS PER FT. x 40'-0" = 11800 LBS TO BE BRACED. 1 1/2" LINE PIPING = 1.81 LBS PER FT. x 169'-0" = 30589 LBS TO BE BRACED. 1 1/4" LINE PIPING = 1.47 LBS PER FT. x 162'-8" = 23912 LBS TO BE BRACED. 2" LINE PIPING = 1.03 LBS PER FT. x 81'-4" = 8377 LBS TO BE BRACED. USE LOSS & CO. #18800 @45 (MIN) INTO CONCRETE W/ BOLT (MAX LOAD = 778 LBS) USE LOSS & CO. #18800 @45 (MIN) INTO CONCRETE W/ BOLT (MAX LOAD = 778 LBS) LONGITUDINAL BRACE = 2.95 LBS PER FT. x 80'-0" = 2360 LBS TO BE BRACED. USE LOSS & CO. #18800 @30 (MIN) INTO CONCRETE W/ BOLT (MAX LOAD = 550 LBS) 3) Where needed, use 1" s/40 pipe with Aicon seismic attachments #77, #1 and #110 for hard pipe bracing.

NOTE:  
SEISMIC DESIGN CALCULATIONS ARE IN COMPLIANCE WITH NFPA-13, 2010 AND IBC, 2009, REQUIREMENTS.

NOTE:  
IT IS UNDERSTOOD THAT ALL AREAS OF THE BUILDING(S) ARE TO BE HEATED SPACES (40 DEG. F. MIN) AND ARE SUITABLE FOR THE INSTALLATION OF WATER FILLED PIPING SYSTEMS, EXCEPT THE PARKING GARAGE. HAMPSHIRE FIRE PROTECTION ACCEPTS NO RESPONSIBILITY/LIABILITY FOR DAMAGES DUE TO FREEZING AT THIS TIME, NOR IN THE FUTURE, TO PIPING SYSTEMS, THE PROPERTY AND/OR ITS CONTENTS.

NOTE:  
HAMPSHIRE FIRE PROTECTION ACCEPTS NO RESPONSIBILITY FOR DAMAGES DUE TO TAMPERING AND/OR VANDALISM OF CLOSE SPRINKLER HEADS AND/OR PIPING. THIS INCLUDES DAMAGE CAUSED BY ITEMS BEING HUNG FROM SPRINKLER COMPONENTS.

**DESIGN CRITERIA**  
THE FOLLOW CRITERIA ARE USED AS A BASIS FOR DESIGN:  
- SPRINKLERS:  
- SPRINKLER SYSTEM DESIGN CRITERIA ARE IN ACCORDANCE WITH NFPA-13 REQUIREMENTS AS OUTLINED BELOW:  
- LIGHT HAZARD = .10 GPM/SQ. FT. OVER 1500 SQ. FT., 100 GPM HOSE ALLOWANCE  
- ORDINARY HAZARD GP-1 = .15 GPM/SQ. FT. OVER 1500 SQ. FT., 250 GPM HOSE ALLOWANCE  
- REMOTE AREA REDUCTIONS FOR QR HEADS APPLIED.

- DRAWING LIST**
- SHEET 1 - COVER SHEET, NOTES, SITE PLAN, DETAILS
  - SHEET 2 - WORKING DRAWINGS
  - SHEET 3 - 1ST FLOOR
  - SHEET 4 - 2ND FLOOR
  - SHEET 5 - 3RD FLOOR
  - SHEET 6 - 4TH FLOOR
  - SHEET 7 - 5TH FLOOR
  - SHEET 8 - STANDPIPES

**Hampshire**  
FIRE PROTECTION  
8 NORTH WENTWORTH AVENUE, LECONCOURT, NH 03259  
PH: (603) 492-8221 FAX: (603) 434-3194  
WEBSITE: HAMPSHIRE.FIRE.COM  
MSS VERNONT CERTIFIED