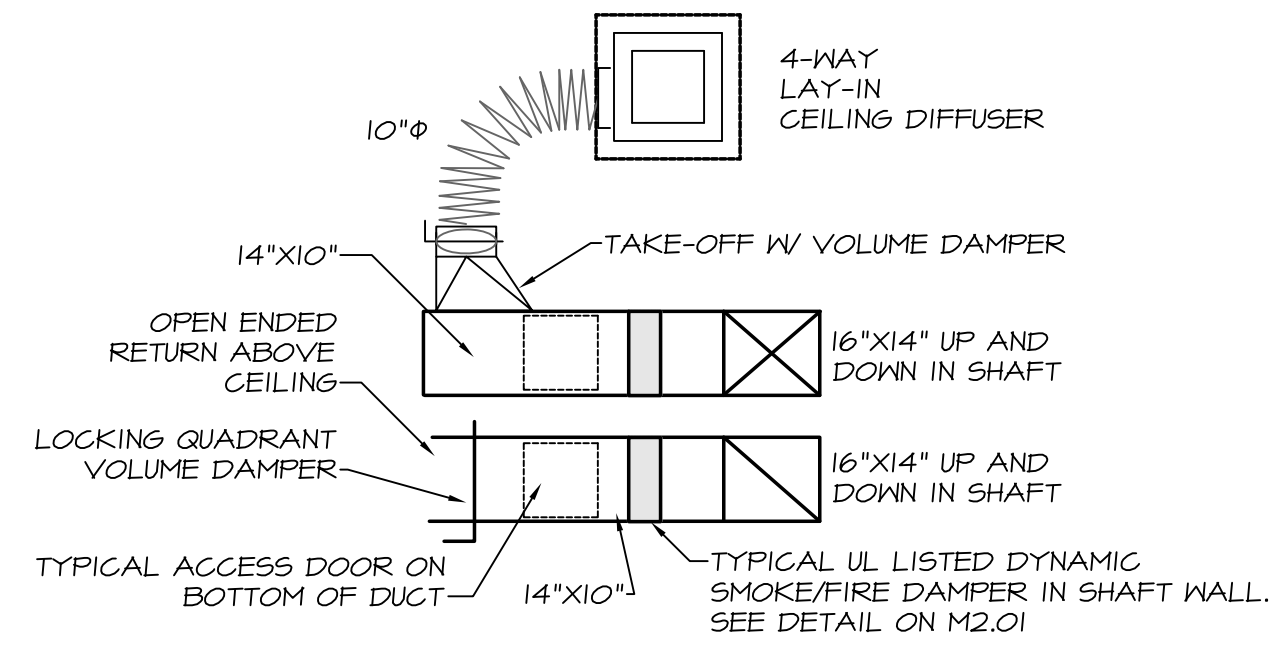
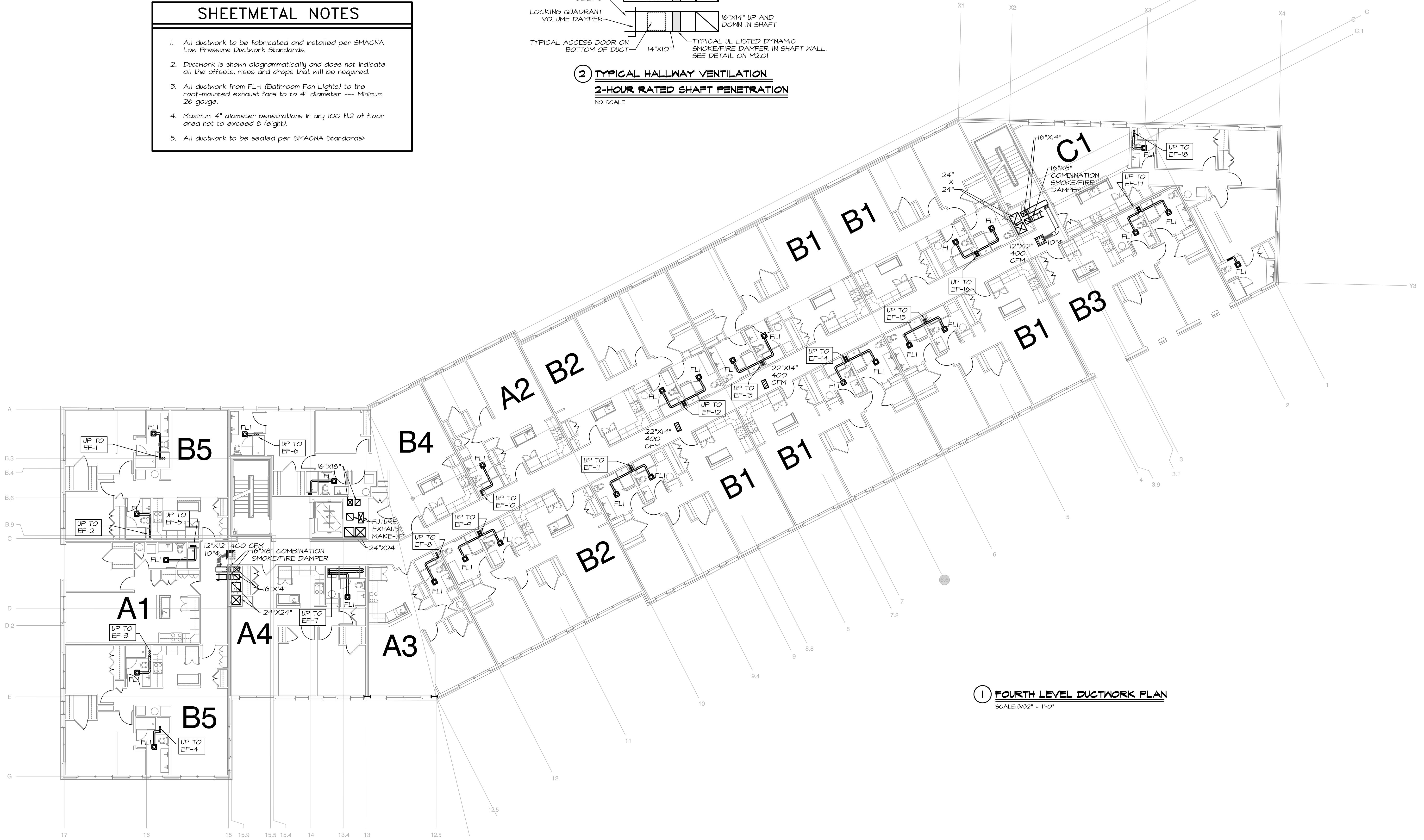


SHEETMETAL NOTES

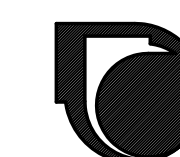
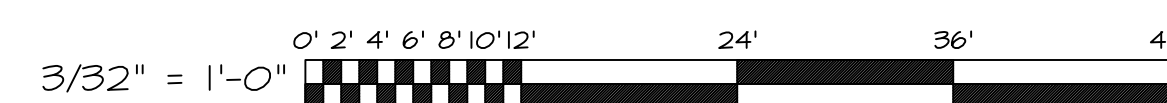
- All ductwork to be fabricated and installed per SMACNA Low Pressure Ductwork Standards.
- Ductwork is shown diagrammatically and does not indicate all the offsets, rises and drops that will be required.
- All ductwork from FL-1 (Bathroom Fan Lights) to the roof-mounted exhaust fans to 4" diameter --- Minimum 26 gauge.
- Maximum 4" diameter penetrations in any 100 ft2 of floor area not to exceed 8 (eight).
- All ductwork to be sealed per SMACNA Standards.



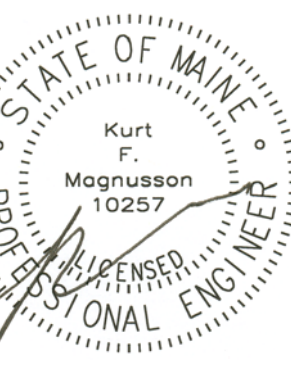
**2 TYPICAL HALLWAY VENTILATION
2-HOUR RATED SHAFT PENETRATION**
NO SCALE



1 FOURTH LEVEL DUCTWORK PLAN
SCALE: 3/32" = 1'-0"



MECHANICAL SYSTEMS ENGINEERS
ROYAL RIVER CENTER, UNIT 10B
10 FOREST FALLS DRIVE, YARMOUTH, MAINE 04096
(207) 846-1441
FACEBOOK: MECHANICAL SYSTEMS ENGINEERS
© COPYRIGHT 2016
M.S.E. Proj. 1608



Mixed Use Development

York & High Street
Portland, Maine

REVISION:

ISSUED:
FOR BID 05/27/2016

project architect: KAK
drawn by: KFM

FOURTH
LEVEL
DUCTWORK

sheet number:

M1.04