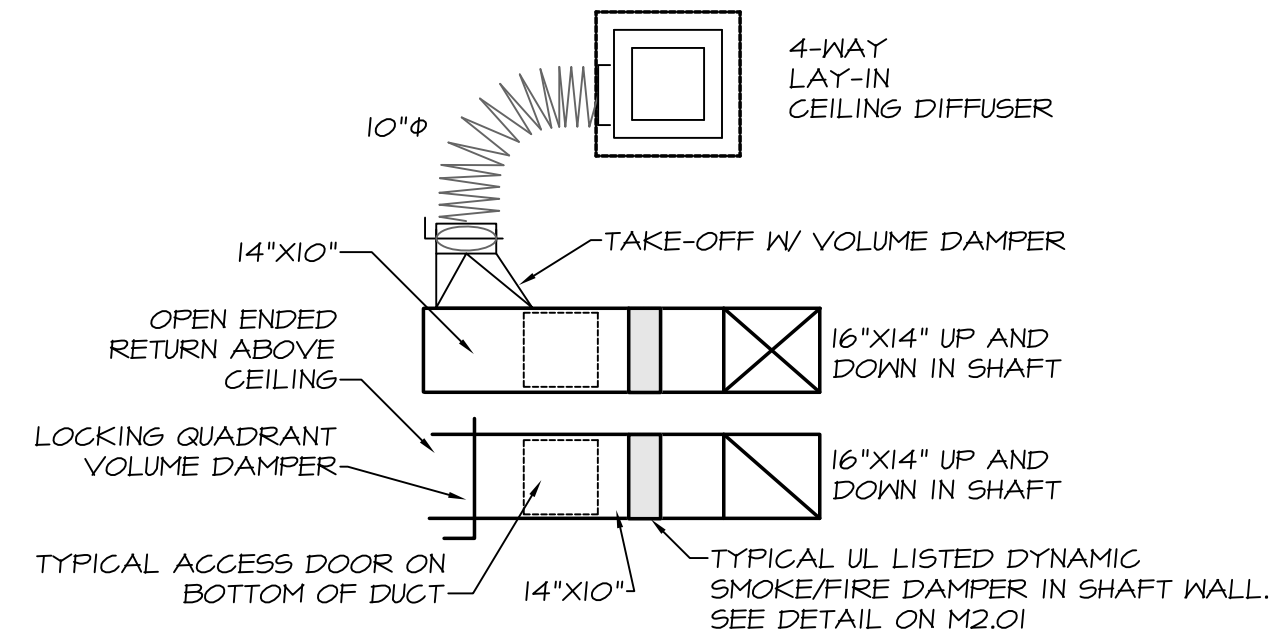
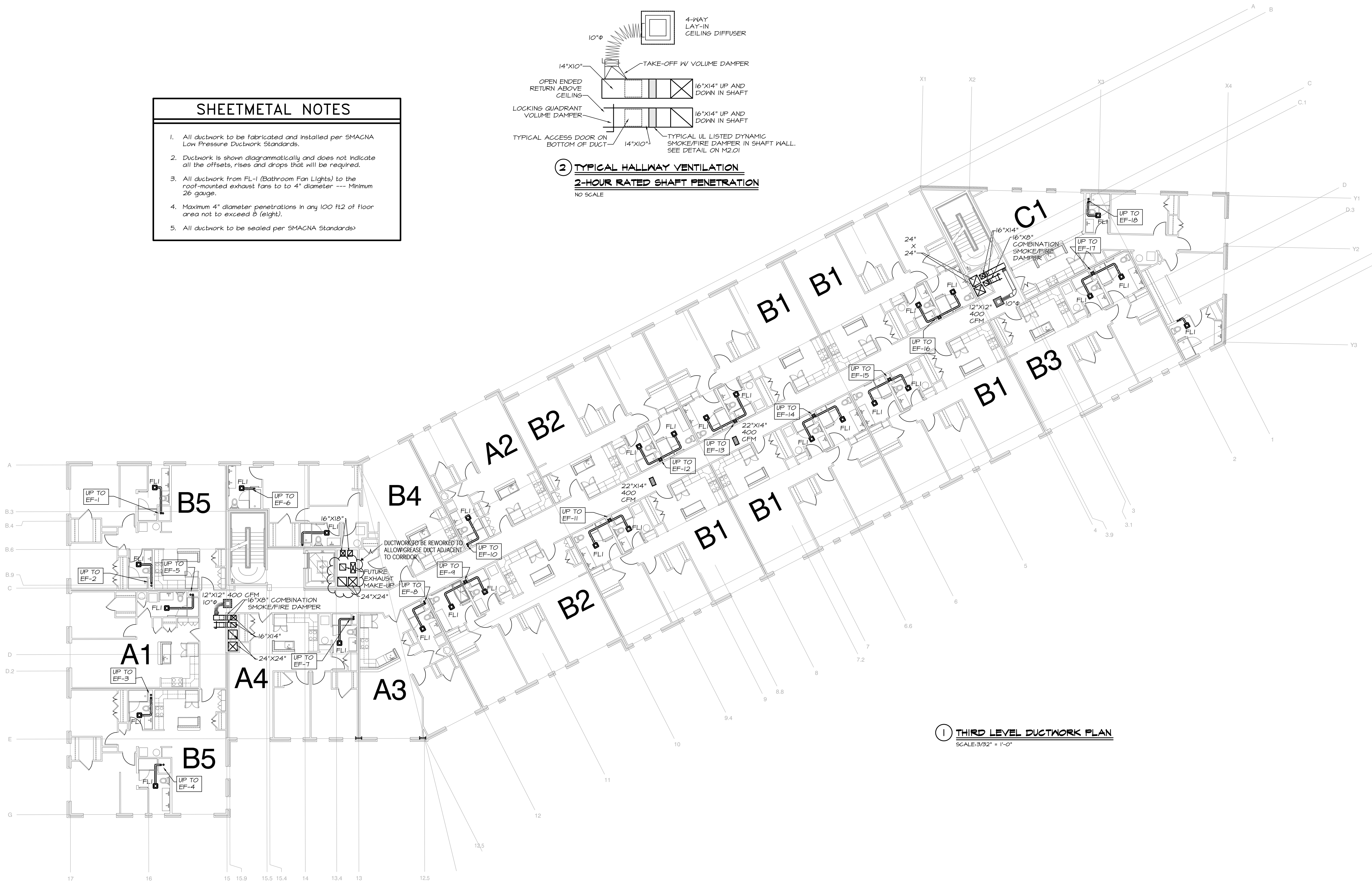


SHEETMETAL NOTES

1. All ductwork to be fabricated and installed per SMACNA Low Pressure Ductwork Standards.
2. Ductwork is shown diagrammatically and does not indicate all the offsets, rises and drops that will be required.
3. All ductwork from FL-1 (Bathroom Fan Lights) to the roof-mounted exhaust fans to 4" diameter --- Minimum 26 gauge.
4. Maximum 4" diameter penetrations in any 100 ft2 of floor area not to exceed 8 (eight).
5. All ductwork to be sealed per SMACNA Standards



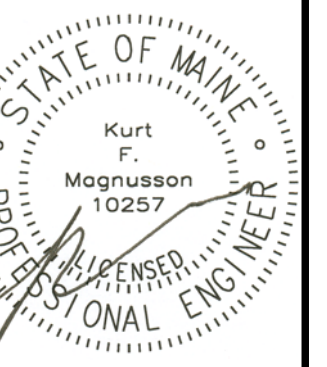
2 TYPICAL HALLWAY VENTILATION
2-HOUR RATED SHAFT PENETRATION
 NO SCALE



1 THIRD LEVEL DUCTWORK PLAN
 SCALE: 3/32" = 1'-0"



MECHANICAL SYSTEMS ENGINEERS
 ROYAL RIVER CENTER, UNIT 10B
 10 FOREST FALLS DRIVE, YARMOUTH, MAINE 04096
 (207) 846-1441
 FACEBOOK: MECHANICAL SYSTEMS ENGINEERS
 © COPYRIGHT 2016
 M.S.E. Proj. 1608



Mixed Use Development

York & High Street
 Portland, Maine

REVISION:

ISSUED:
 FOR BID 05/27/2016

project architect: KAK
 drawn by: KFM

THIRD
 LEVEL
 DUCTWORK

sheet number:

M1.03