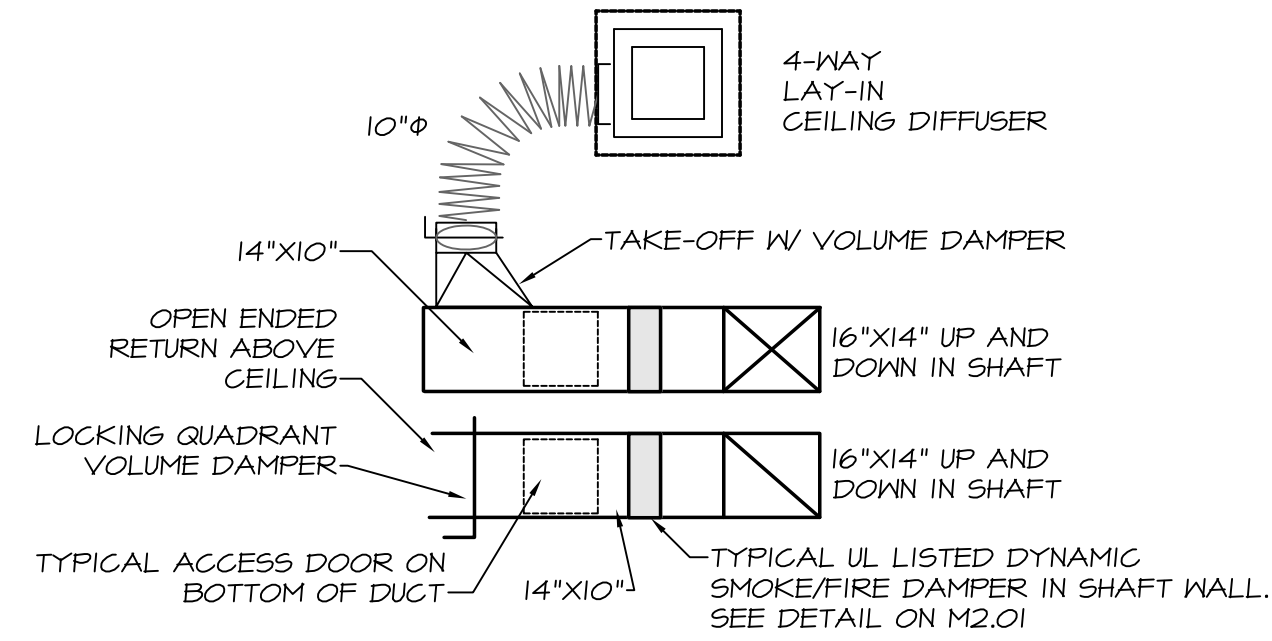
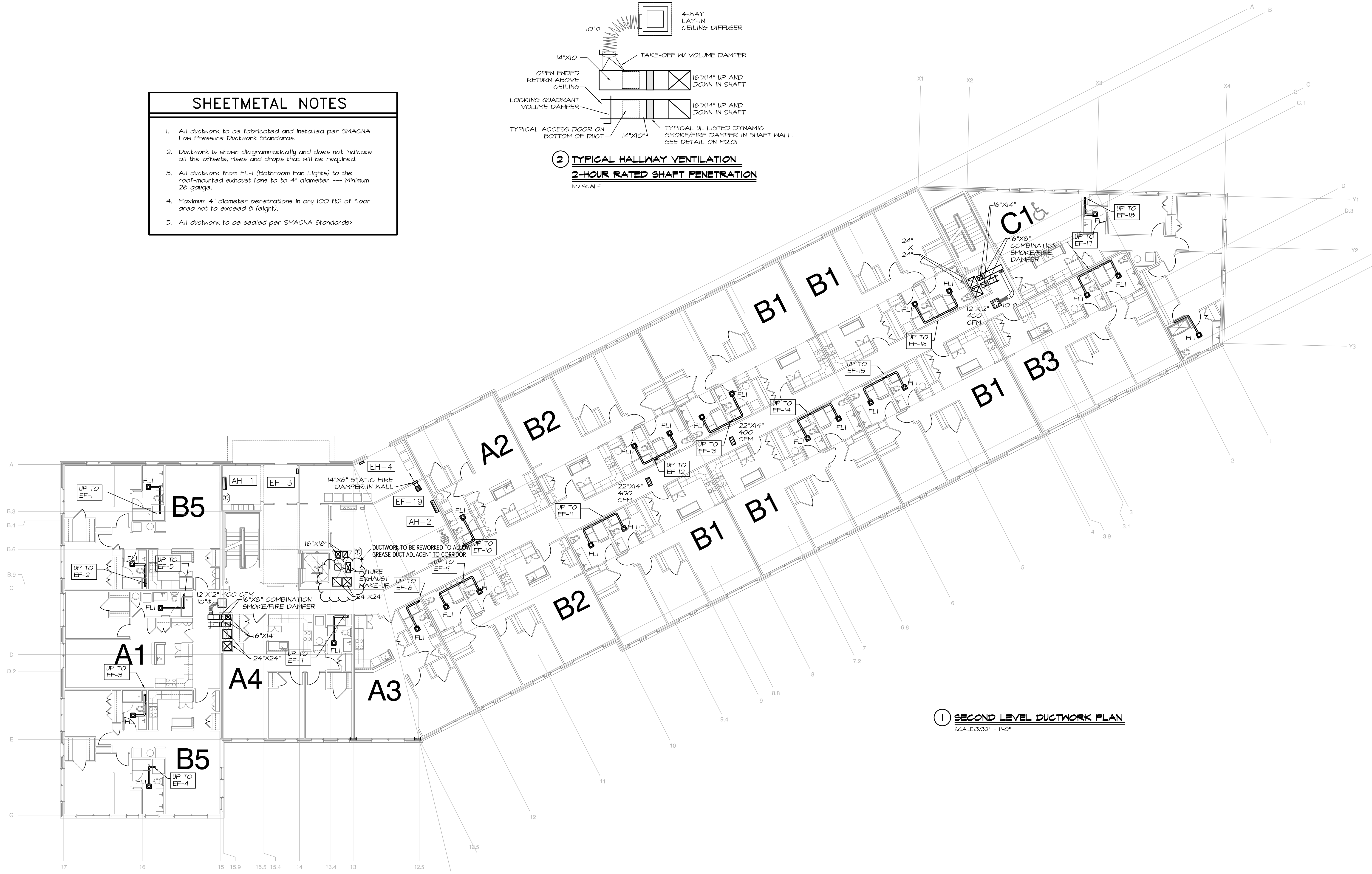


### SHEETMETAL NOTES

- All ductwork to be fabricated and installed per SMACNA Low Pressure Ductwork Standards.
- Ductwork is shown diagrammatically and does not indicate all the offsets, rises and drops that will be required.
- All ductwork from FL-1 (Bathroom Fan Lights) to the roof-mounted exhaust fans to 4" diameter --- Minimum 26 gauge.
- Maximum 4" diameter penetrations in any 100 ft2 of floor area not to exceed 8 (eight).
- All ductwork to be sealed per SMACNA Standards



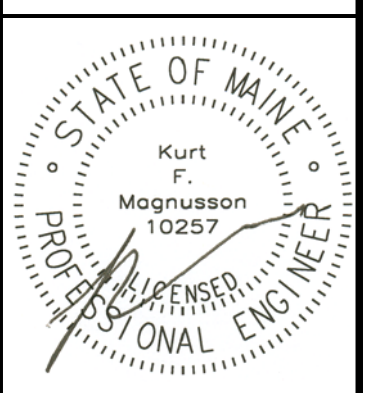
**2 TYPICAL HALLWAY VENTILATION  
2-HOUR RATED SHAFT PENETRATION**  
NO SCALE



**1 SECOND LEVEL DUCTWORK PLAN**  
SCALE: 3/32" = 1'-0"



**MECHANICAL SYSTEMS ENGINEERS**  
ROYAL RIVER CENTER, UNIT 10B  
10 FOREST FALLS DRIVE, YARMOUTH, MAINE 04096  
(207) 846-1441  
FACEBOOK: MECHANICAL SYSTEMS ENGINEERS  
© COPYRIGHT 2016  
M.S.E. Proj. 1608



Mixed Use Development

York & High Street  
Portland, Maine

REVISION:

ISSUED:  
FOR BID 05/27/2016

project architect: KAK  
drawn by: KFM

SECOND  
LEVEL  
DUCTWORK

sheet number:  
**M1.02**