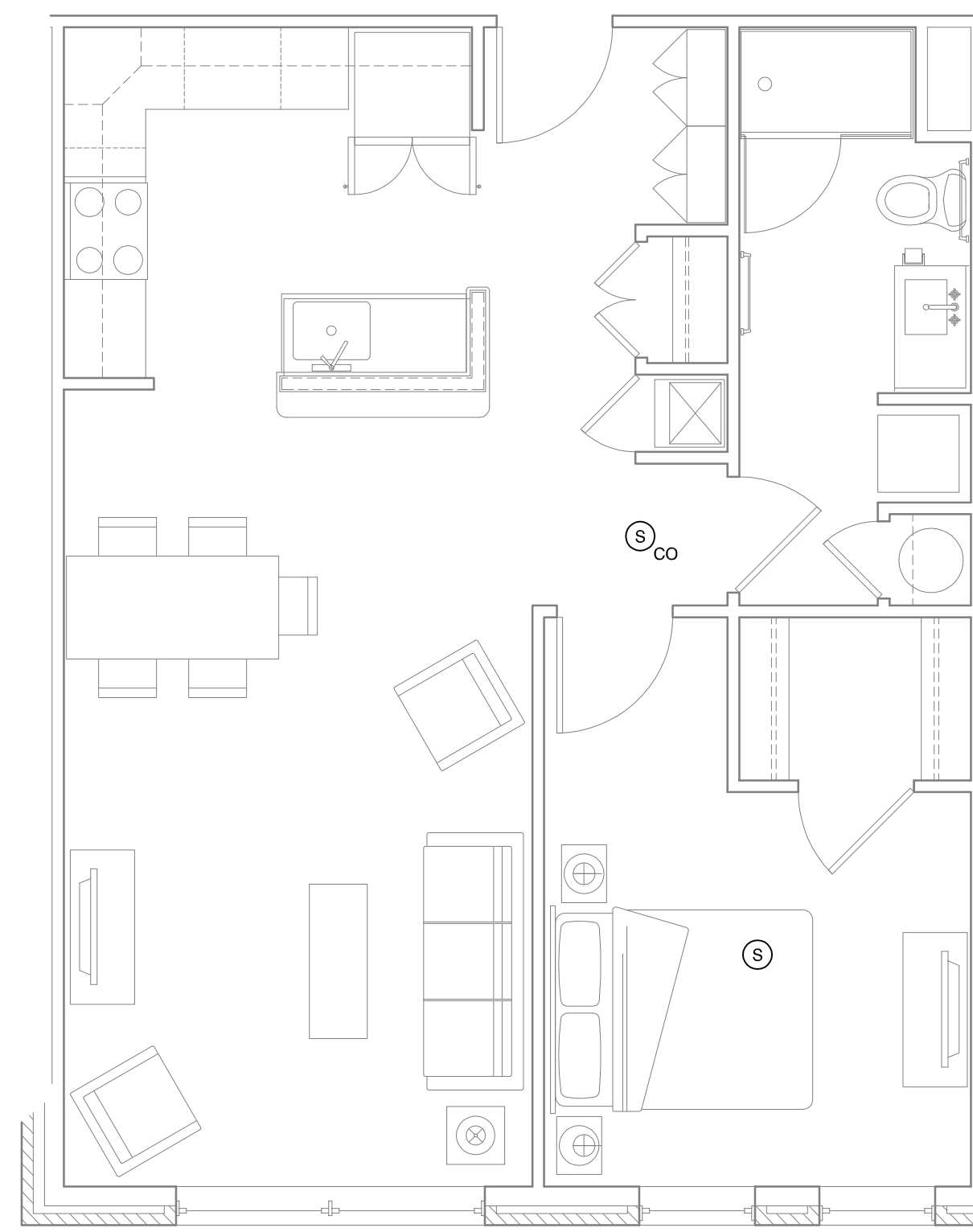


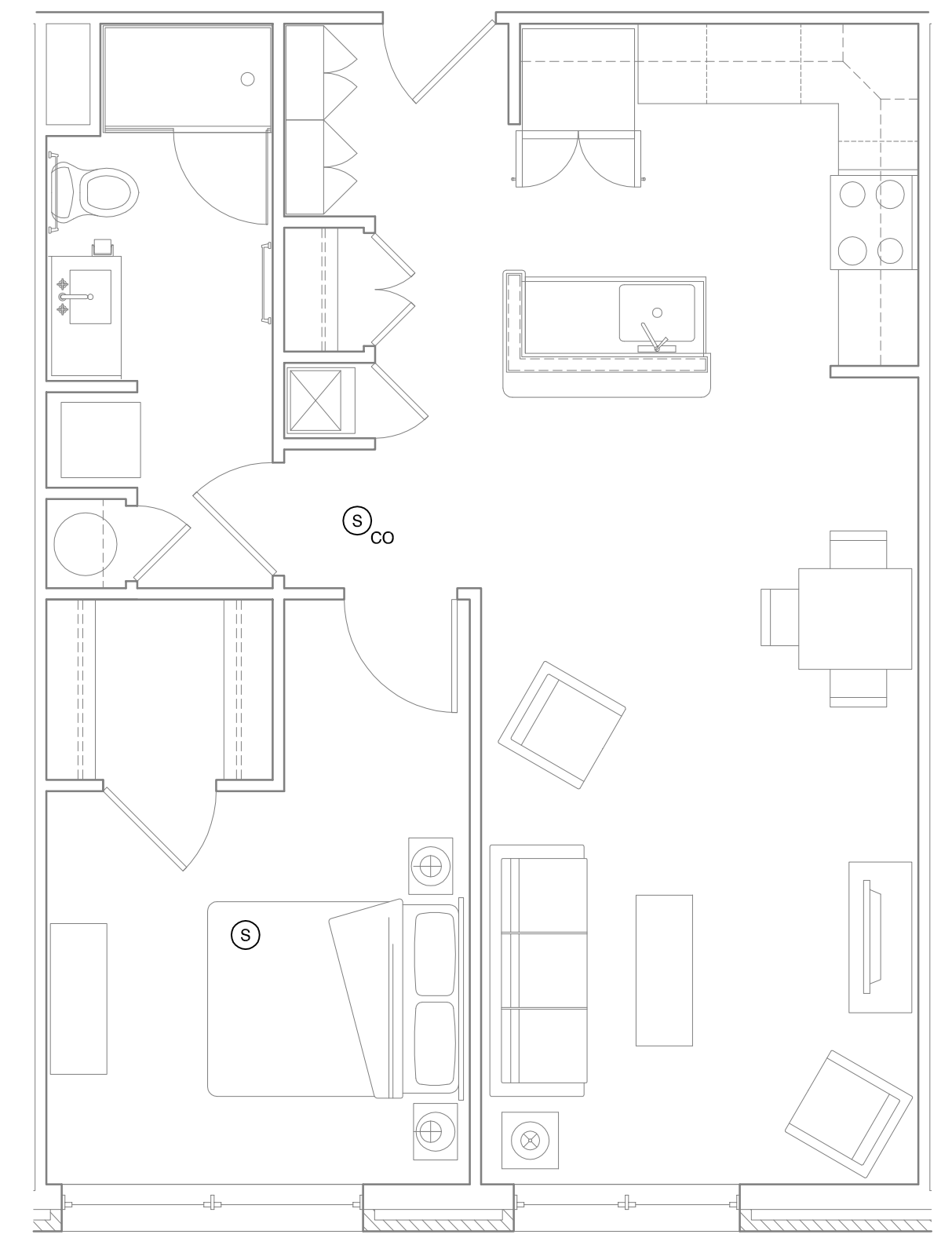
A4 1 BEDROOM UNIT FIRE ALARM PLAN
1/4" = 1'-0"; UNITS: 204, 304, 404, 504



A3 1 BEDROOM UNIT FIRE ALARM PLAN
1/4" = 1'-0"; UNITS: 206, 306, 406, 506



A2 1 BEDROOM UNIT FIRE ALARM PLAN
1/4" = 1'-0"; UNITS: 207, 307, 407, 507



A1 1 BEDROOM UNIT FIRE ALARM PLAN
1/4" = 1'-0"; UNITS: 202, 302, 402, 502

| FIRE ALARM NOTES | | FIRE ALARM LEGEND | |
|--|--|-------------------|---|
| 1. HEARING IMPAIRED ROOMS SHALL BE EQUIPPED WITH ACCESSIBLE DEVICES SUCH AS, BUT NOT LIMITED TO THE FOLLOWING: FIRE ALARM STROBES, SMOKE DETECTOR STROBES, CARBON MONOXIDE STROBES, DOOR LIGHT/BUZZERS AND TELEPHONES WITH VOLUME CONTROLS COMPATIBLE WITH THE PHONE SYSTEM. | | SYMBOL | DESCRIPTION |
| 2. DEVICE COLORS TO BE WHITE WHERE PERMITTED BY CODE. | | [S] | STROBE LIGHT |
| 3. CONTRACTOR HAS OPTION OF COMBINING FIRE SAFETY DEVICES WITHIN THE SAME DEVICE | | [S-co] | COMBINATION SMOKE DETECTOR/CARBON MONOXIDE DETECTOR WITH SOUNDER BASE |
| 4. CONTRACTOR SHALL COORDINATE CEILING DEVICES WITH FLOOR JOIST AND ADJUST LOCATIONS +/- 6 INCHES. | | [S] | SMOKE DETECTOR WITH SOUNDER BASE |
| 5. PROVIDE VISIBLE NOTIFICATION IN HEARING IMPAIRED ROOMS AS DESIGNATED IN THE ACCESSIBLE ROOM MATRIX. DO NOT ASSUME THAT ALL BARRIER-FREE ROOMS ARE HEARING IMPAIRED ROOMS. REFER TO SCHEDULE AND SPECIFIC ROOM NUMBERS. | | | NOTE: RESIDENTIAL UNIT FIRE ALARM DEVICE LOCATIONS SHOWN ON PLANS ARE APPROXIMATE. DESIGN BUILD SUBCONTRACTOR TO LOCATE AS REQUIRED BY APPLICABLE CODE. |