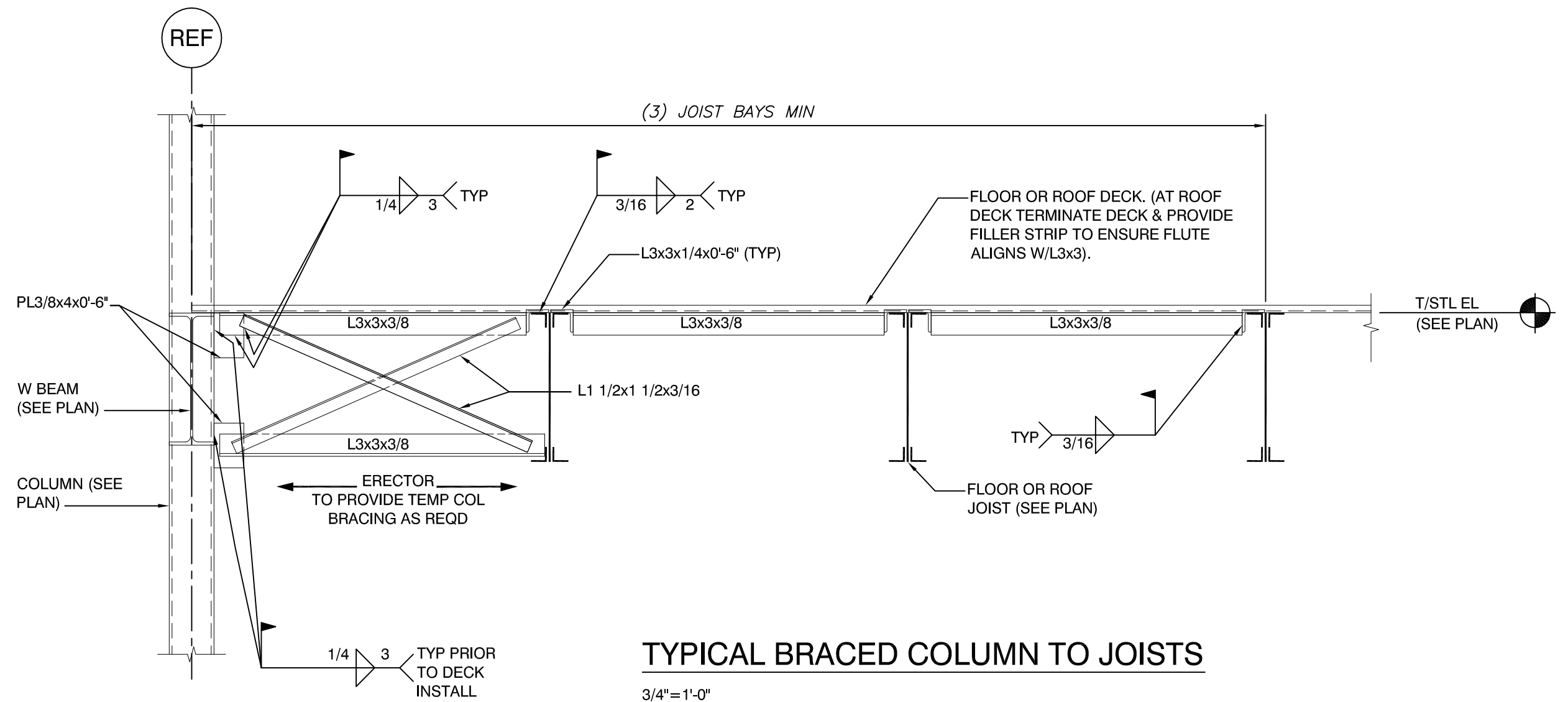
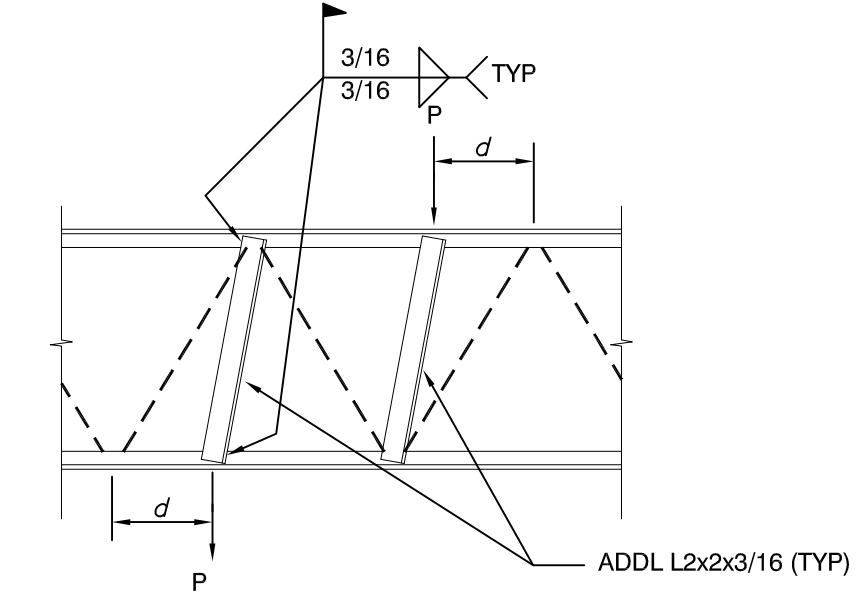


Monday, March 28, 2016 2:49:57 PM



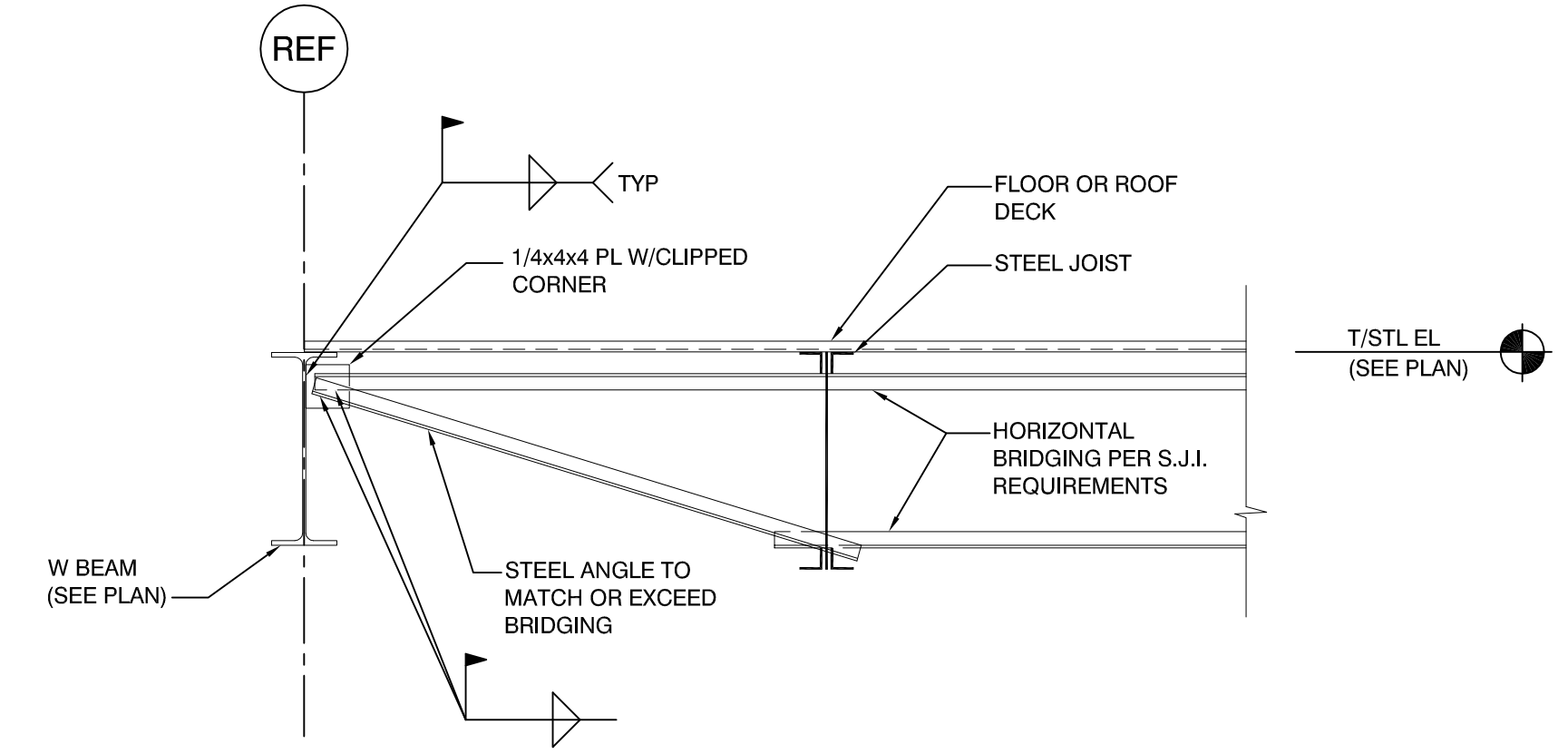
TYPICAL BRACED COLUMN TO JOISTS
3/4"=1'-0"

NOTE: DETAIL TYPICAL WHERE COLUMN NOT BRACED BY W BEAM OR JOIST GIRDER IN TWO DIRECTIONS.

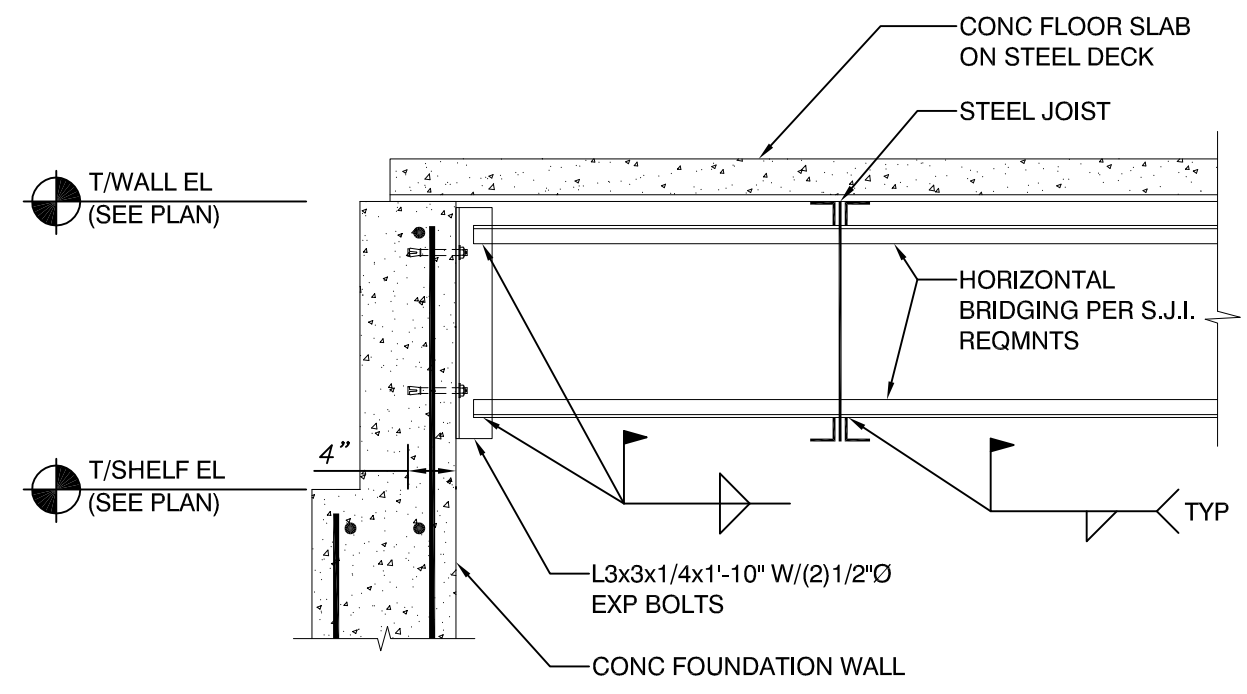
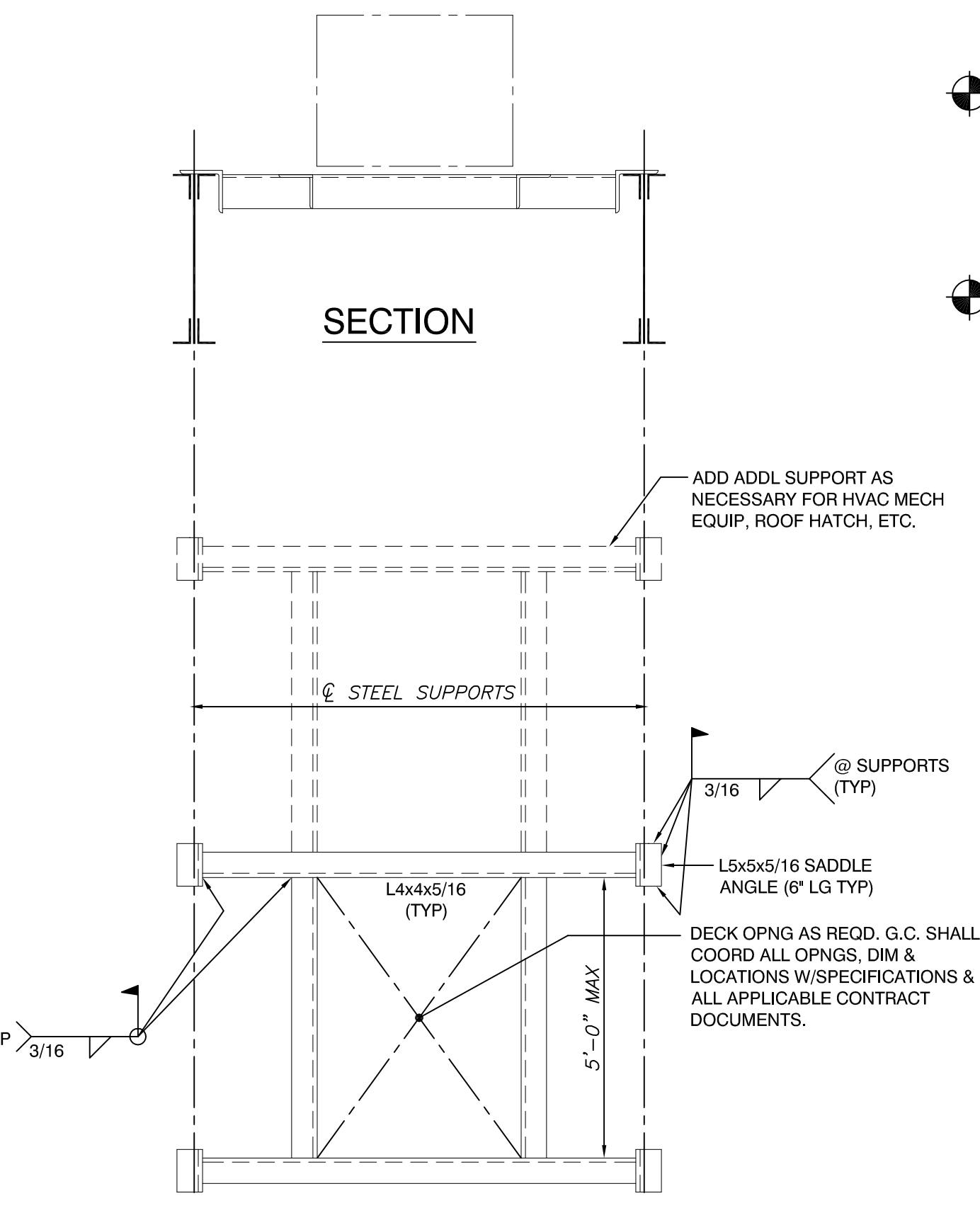


TYP JOIST REINF DETAIL

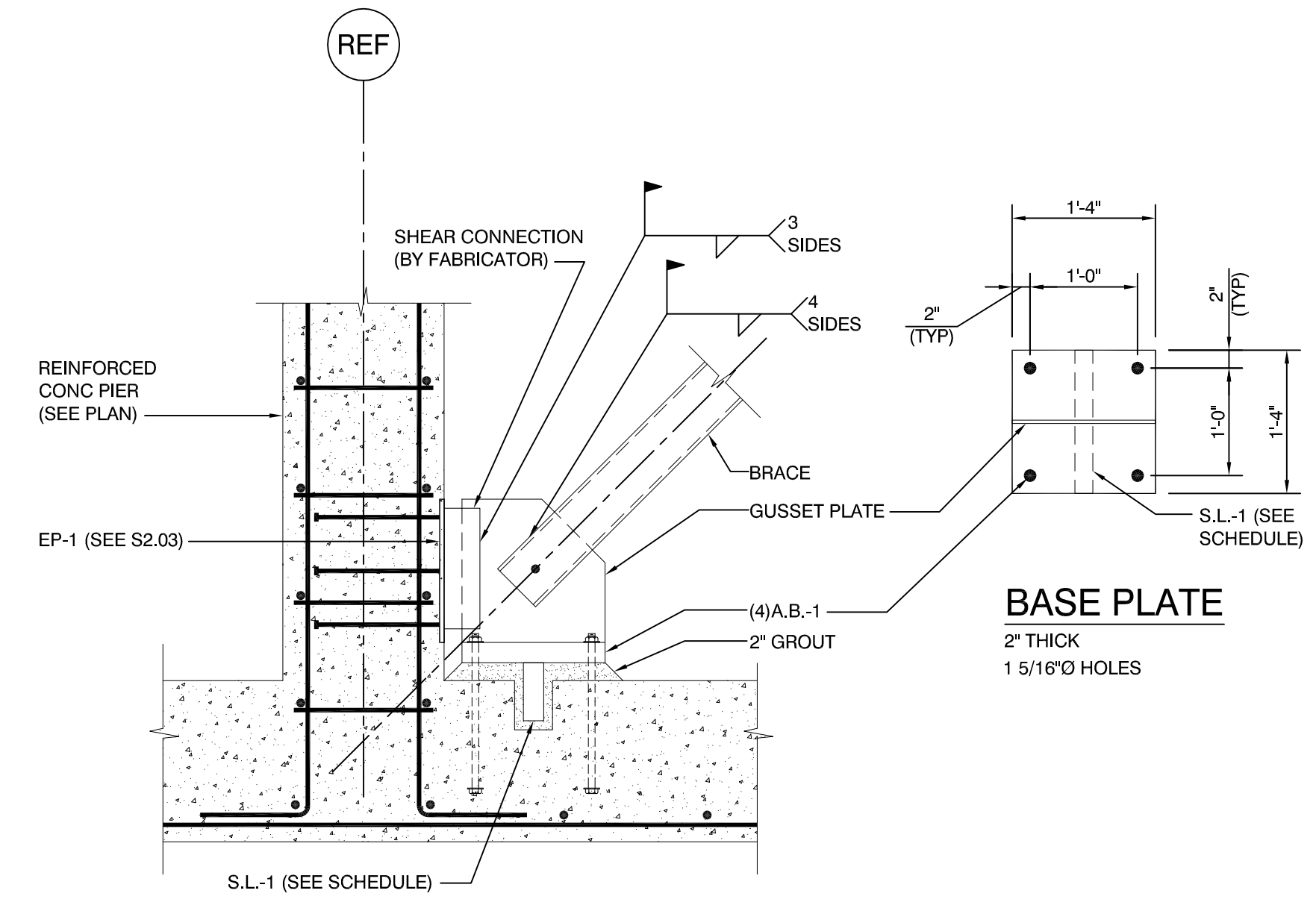
N.T.S.
1. FOR CONCENTRATED LOADS LOCATED A DISTANCE "d", 4" OR MORE FROM PANEL POINT, PROVIDE ADDITIONAL WEB MEMBERS AS SHOWN.
2. P = 300# MAX LOAD.



TYPICAL JOIST BRIDGING TO BEAM
3/4"=1'-0"



TYPICAL JOIST BRIDGING TO FDN
3/4"=1'-0"



BASEMENT PIER BRACE DETAIL
3/4"=1'-0"

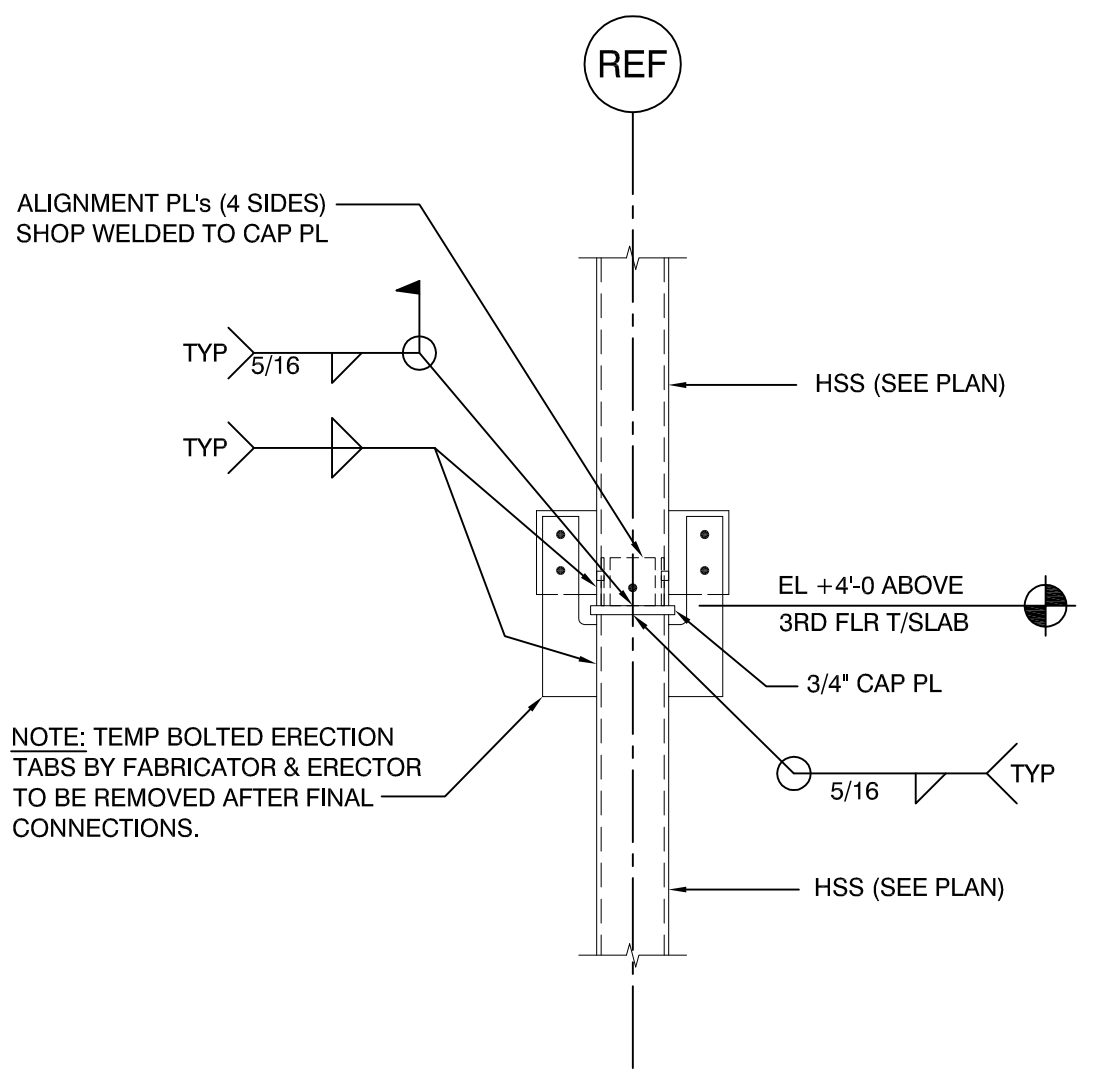
SIMPLE SHEAR BEAM CONN. SCHEDULE			
BEAM SIZE	DESIGN REACTION	MINIMUM NO BOLTS 1 SIDED CONNECTION	MINIMUM NO BOLTS 2 SIDED CONNECTION
W8	10k	2	2
W10	10k	2	2
W12	15k	3	2
*W14	25k	3	2
W16	25k	4	3
*W18	30k	4	3
W21	35k	5	4
W24	40k	5	4

*=BEAM REACTIONS. DOES NOT INCLUDE BRACE FORCES. SEE BRACING DIAGRAMS.

SIMPLE SHEAR CONNECTIONS NOTES:

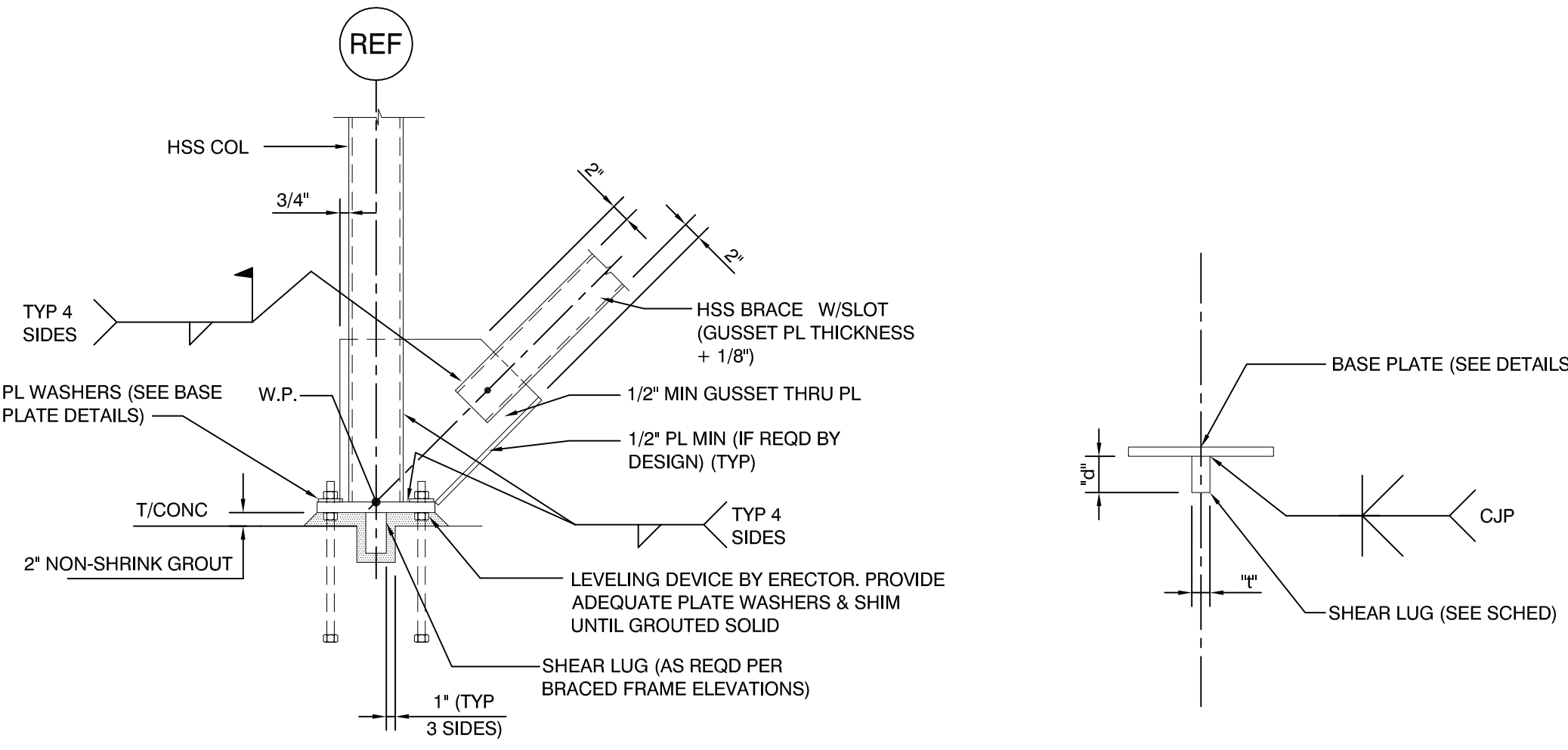
- SIMPLE SHEAR CONNECTIONS SHALL BE SELECTED FROM THE AISC "MANUAL OF STEEL CONSTRUCTION, THIRTEENTH EDITION" USING THE ABOVE REFERENCED REACTIONS AND CRITERIA. REACTIONS INDICATED ARE UNFACTORED (SERVICE LEVEL LOADS). MORE BOLTS THAN REFERENCED IN THE "MINIMUM" SECTIONS ABOVE MAY BE REQUIRED FOR LOAD REQUIREMENTS.
- CONNECTIONS ARE SUBJECT TO REVIEW ON THE STEEL SHOP DRAWINGS.
- ALL BOLTS SHALL BE A325 OR A490 FOR SIMPLE SHEAR CONNECTIONS. MIN 3/4". MINIMUM WELD SIZE SHALL BE 5/16". MINIMUM MATERIAL SIZE FOR PLATES OR ANGLES SHALL BE 3/8".
- ONE SIDED CONNECTIONS INCLUDE SINGLE PLATES AND SINGLE ANGLE CONNECTIONS.
- TWO SIDED CONNECTIONS INCLUDE DOUBLE ANGLE AND END PLATE CONNECTIONS.

PLAN OF TYP OPENING IN ROOF DECK
N.T.S. TYPICAL @ FANS & OTHER MECH & HVAC EQUIP U.N.O.



TYP COLUMN SPLICE DETAILS U.N.O.
3/4"=1'-0"

NOTE: TYP AT BRACED BAY COLUMNS: DESIGN SPLICE TO TRANSMIT 100% OF UPPER COLUMN FOR AXIAL, SHEAR & MOMENT CAPACITY



TYP SHEAR LUG DETAILS

PLATE WASHER SCHEDULE		
ANCHOR ROD DIA	MIN WASHER DIM, in.	MIN WASHER THICKNESS, in.
3/4"	2"	1/4"
1"	3"	3/8"
1 1/4"	3"	1/2"

SHEAR LUG SCHEDULE		
MARK	SHEAR LUG SIZE t x d x w	WELD/SIZE (EA SIDE)
S.L.-1	2x5x"W"	CJP
S.L.-2	1 1/2x4x0'-6"	CJP

NOTE: FOR SL-1 "W" TO MATCH BASE PLATE.

