

BRACED FRAME ELEVATION #8
3/16" = 1'-0"

BRACED FRAME ELEVATION #10
3/16" = 1'-0"

BRACED FRAME ELEVATION #11
3/16" = 1'-0"

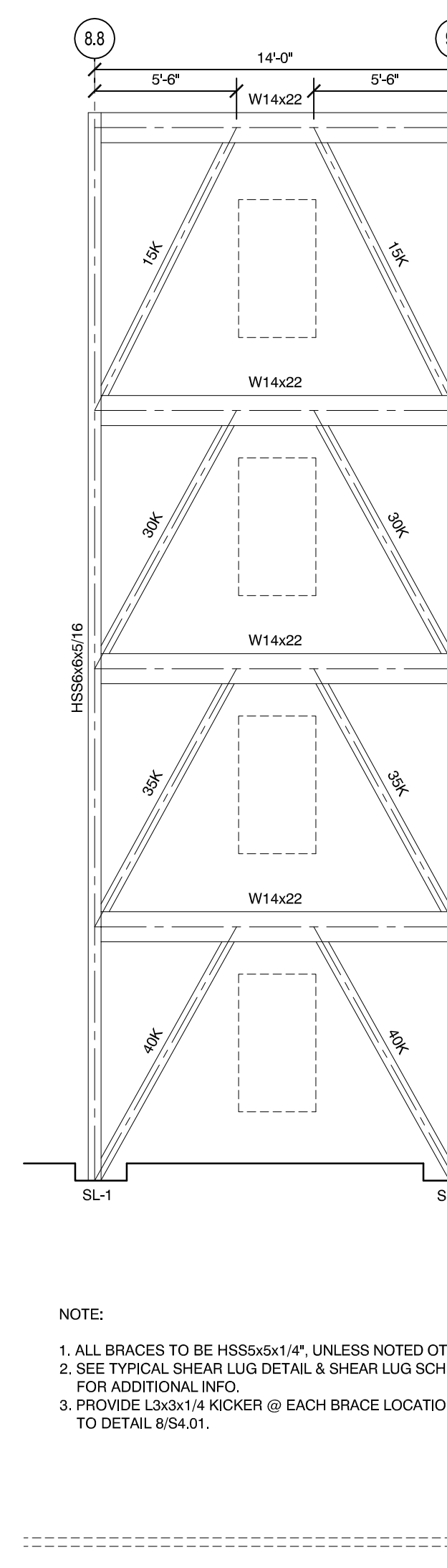
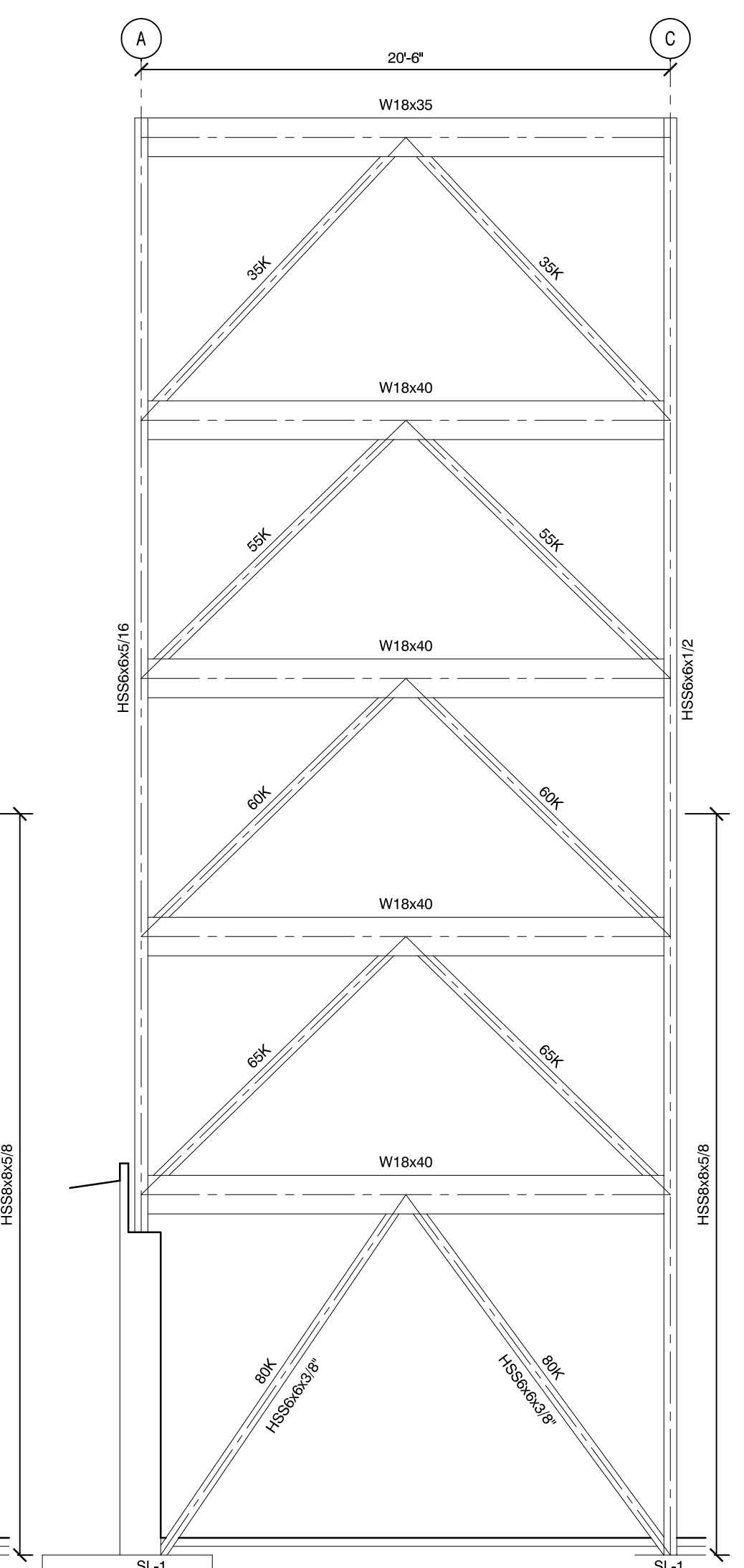
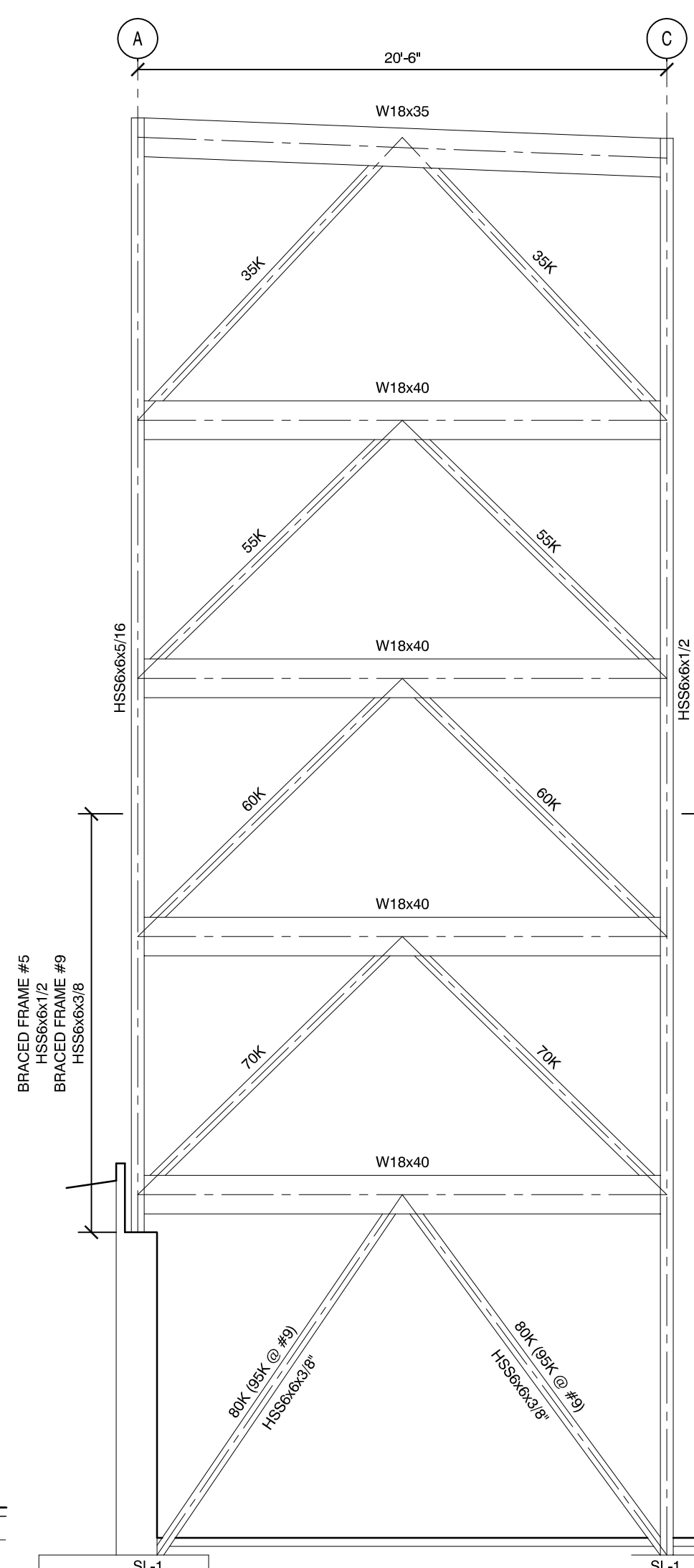
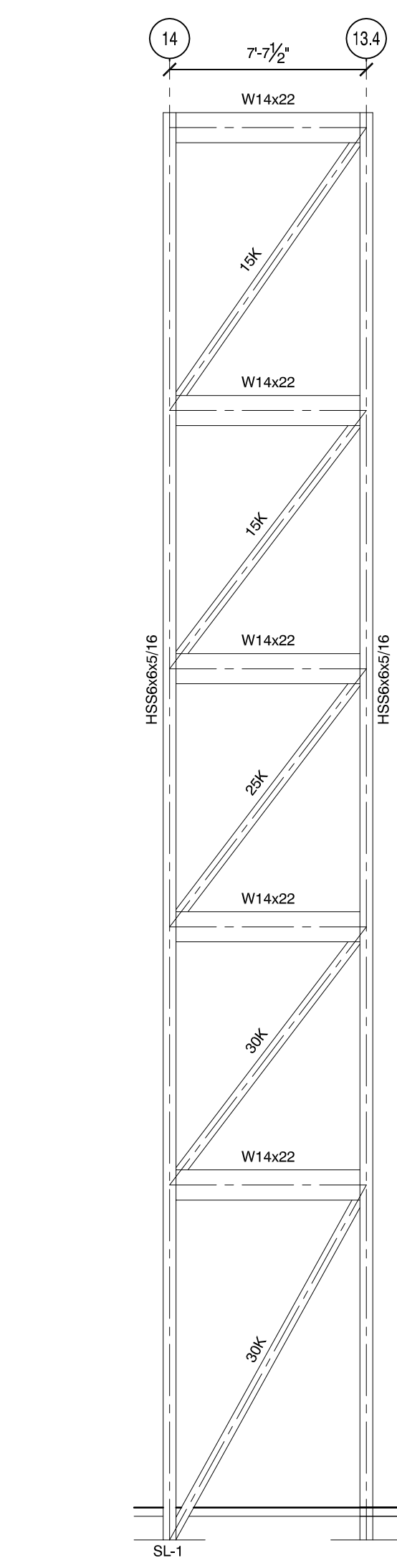
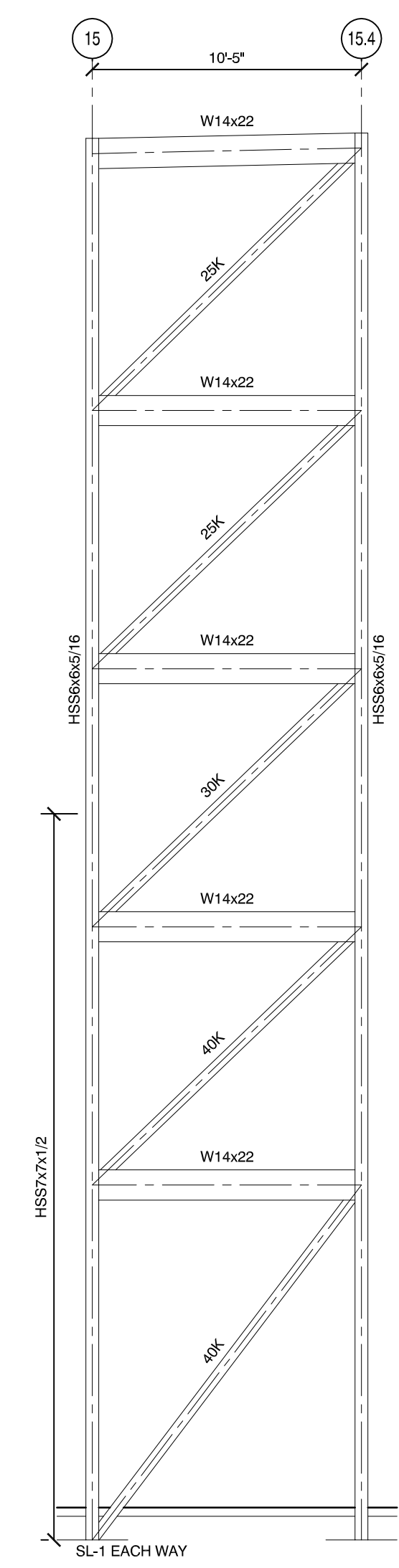
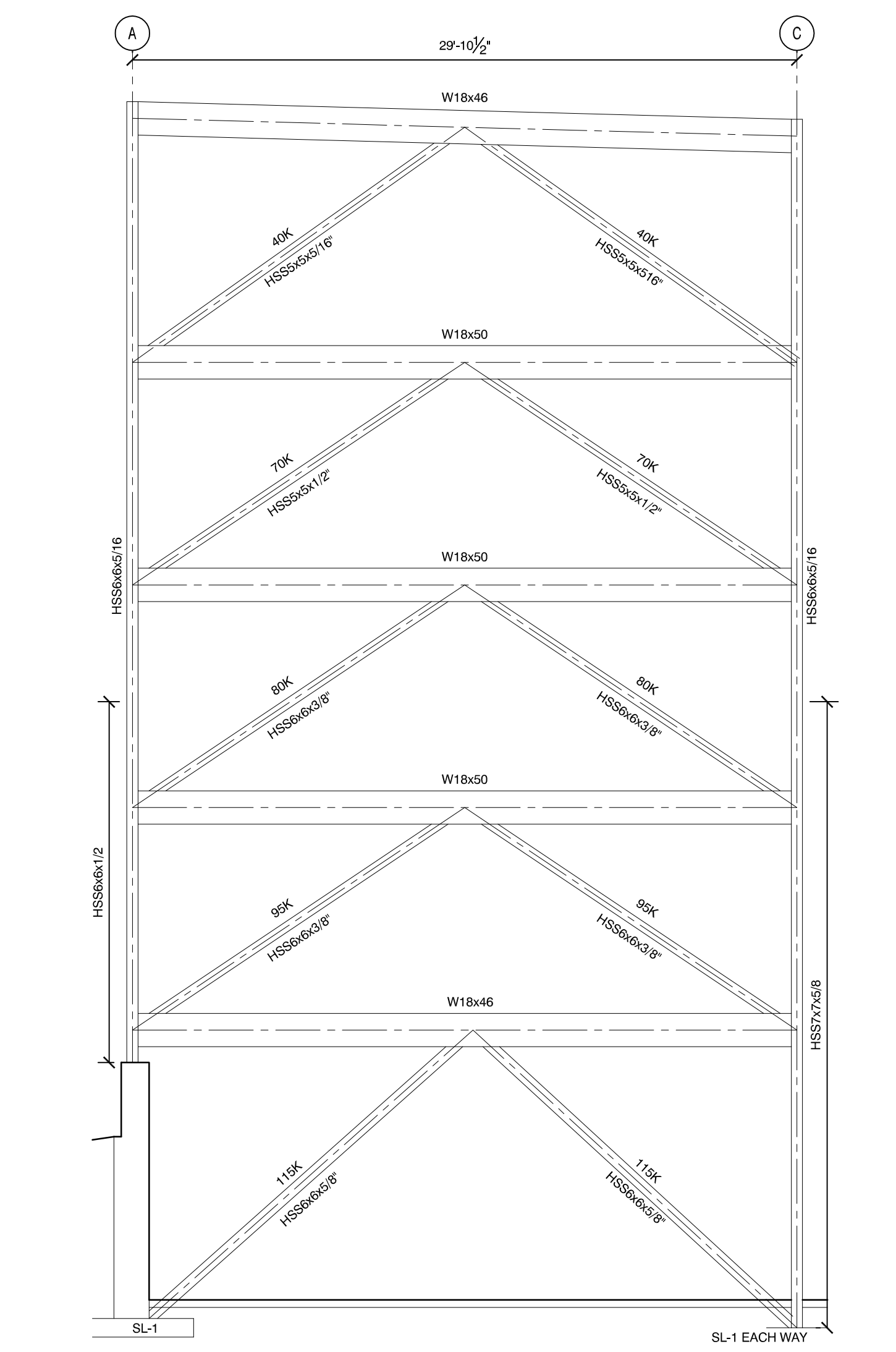
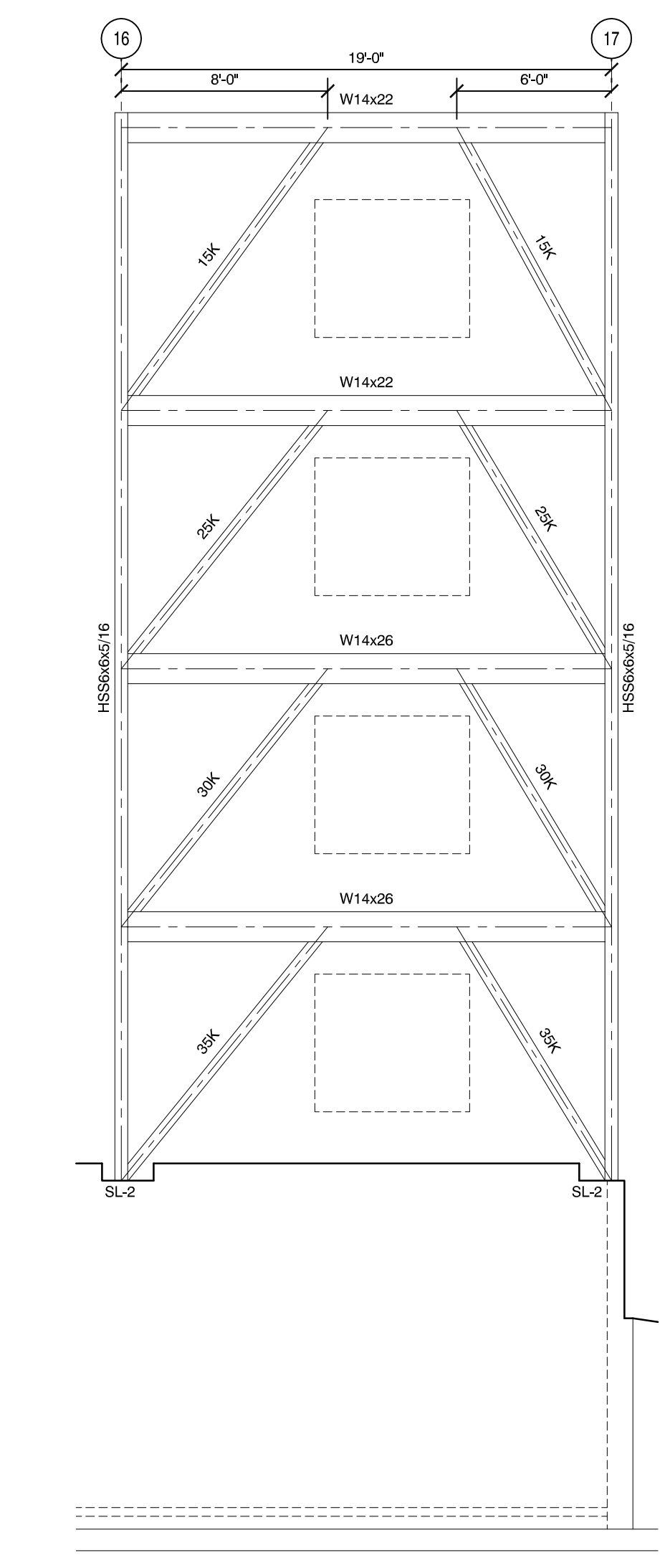
BRACED FRAME ELEVATIONS #12
3/16" = 1'-0"

BRACED FRAME ELEVATIONS #13
3/16" = 1'-0"

BRACED FRAME ELEVATIONS #14
3/16" = 1'-0"

BRACED FRAME ELEVATIONS #15
3/16" = 1'-0"

BRACED FRAME ELEVATIONS #16
3/16" = 1'-0"



BRACED FRAME ELEVATION #1
3/16" = 1'-0"

BRACED FRAME ELEVATION #2
3/16" = 1'-0"

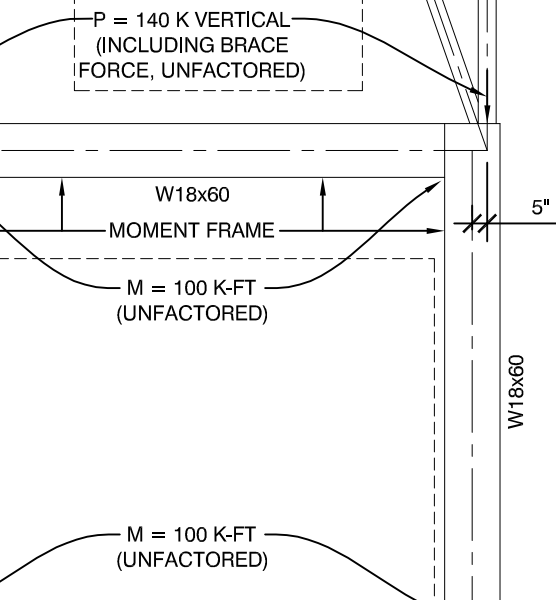
BRACED FRAME ELEVATION #3
3/16" = 1'-0"

BRACED FRAME ELEVATION #4
3/16" = 1'-0"

BRACED FRAME ELEVATIONS #5 & #9
3/16" = 1'-0"

BRACED FRAME ELEVATION #7
3/16" = 1'-0"

BRACED FRAME ELEVATION #6
3/16" = 1'-0"



NOTE:
1. ALL BRACES TO BE HSS5x5x1/4, UNLESS NOTED OTHERWISE.
2. SEE TYPICAL SHEAR LUG DETAIL & SHEAR LUG SCHEDULE FOR ADDITIONAL INFO.
3. PROVIDE L3x3x1/4 KICKER @ EACH BRACE LOCATION SIMILAR TO DETAIL 834.01.



STRUCTURAL ENGINEERS
75 York Street, Portland, Maine 04101
207.653.1838 • beckerstructural.com



Mixed Use Development
York & High Street
Portland, Maine

REVISION:
03/17/16 BSE CONSTRUCTION MARKUPS

ISSUED:
01/13/16 FOR STRUCTURAL REVIEW
02/24/16 FOR STRUCTURAL REVIEW
FOR BUILDING PERMIT 02/26/16
03/28/16 FOR CONSTRUCTION

project architect: KAK
drawn by: JUD

BRACED FRAME ELEVATIONS

sheet number:
S4.02