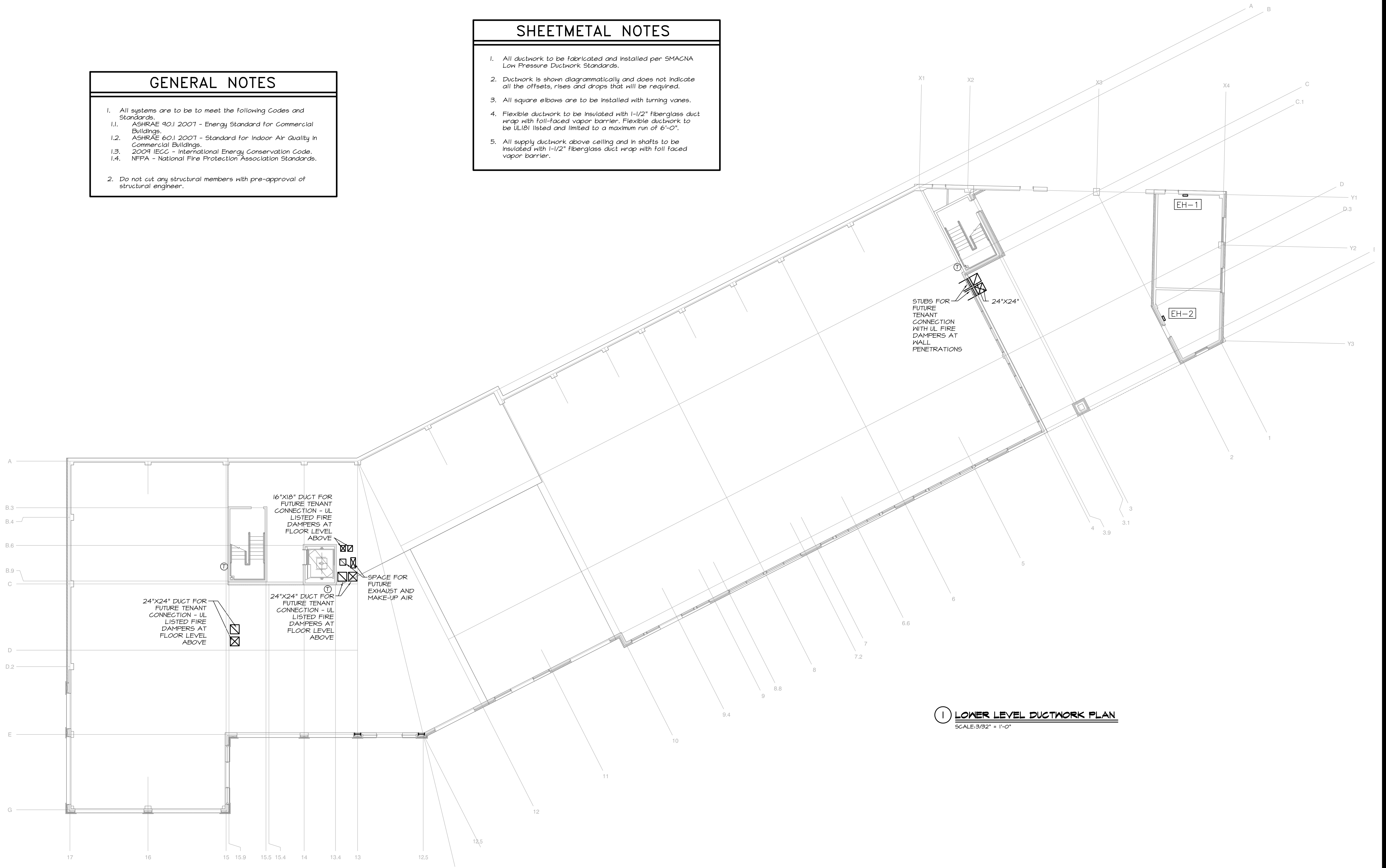


GENERAL NOTES

1. All systems are to be to meet the following Codes and Standards.
 - 1.1. ASHRAE 90.1 2007 - Energy Standard for Commercial Buildings.
 - 1.2. ASHRAE 60.1 2007 - Standard for Indoor Air Quality in Commercial Buildings.
 - 1.3. 2009 IECC - International Energy Conservation Code.
 - 1.4. NFPA - National Fire Protection Association Standards.
2. Do not cut any structural members with pre-approval of structural engineer.

SHEETMETAL NOTES

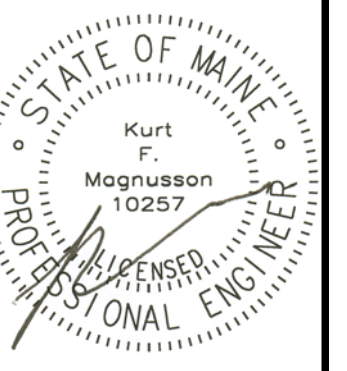
1. All ductwork to be fabricated and installed per SMACNA Low Pressure Ductwork Standards.
2. Ductwork is shown diagrammatically and does not indicate all the offsets, rises and drops that will be required.
3. All square elbows are to be installed with turning vanes.
4. Flexible ductwork to be insulated with 1-1/2" fiberglass duct wrap with foil-faced vapor barrier. Flexible ductwork to be UL181 listed and limited to a maximum run of 6'-0".
5. All supply ductwork above ceiling and in shafts to be insulated with 1-1/2" fiberglass duct wrap with foil faced vapor barrier.



① LOWER LEVEL DUCTWORK PLAN
SCALE: 3/32" = 1'-0"



MECHANICAL SYSTEMS ENGINEERS
 ROYAL RIVER CENTER, UNIT 10B
 10 FOREST FALLS DRIVE, YARMOUTH, MAINE 04096
 (207) 846-1441
 FACEBOOK: MECHANICAL SYSTEMS ENGINEERS
 © COPYRIGHT 2016
 M.S.E. Proj. 1608



Mixed Use Development

York & High Street
 Portland, Maine

REVISION:

ISSUED:
 FOR PERMITTING 05/16/2016

project architect: KAK
 drawn by: KFM

LOWER LEVEL DUCTWORK

sheet number:
M1.01