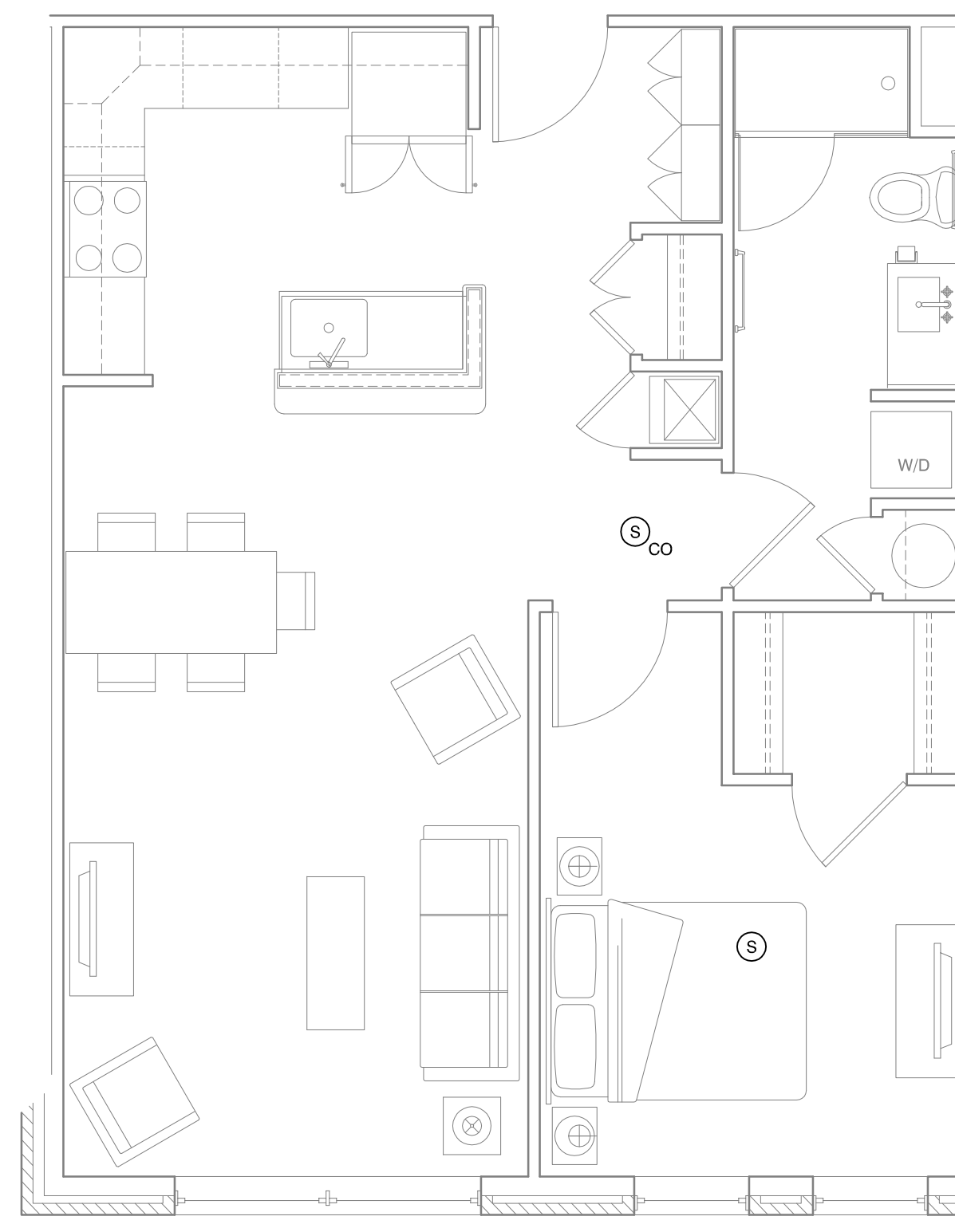


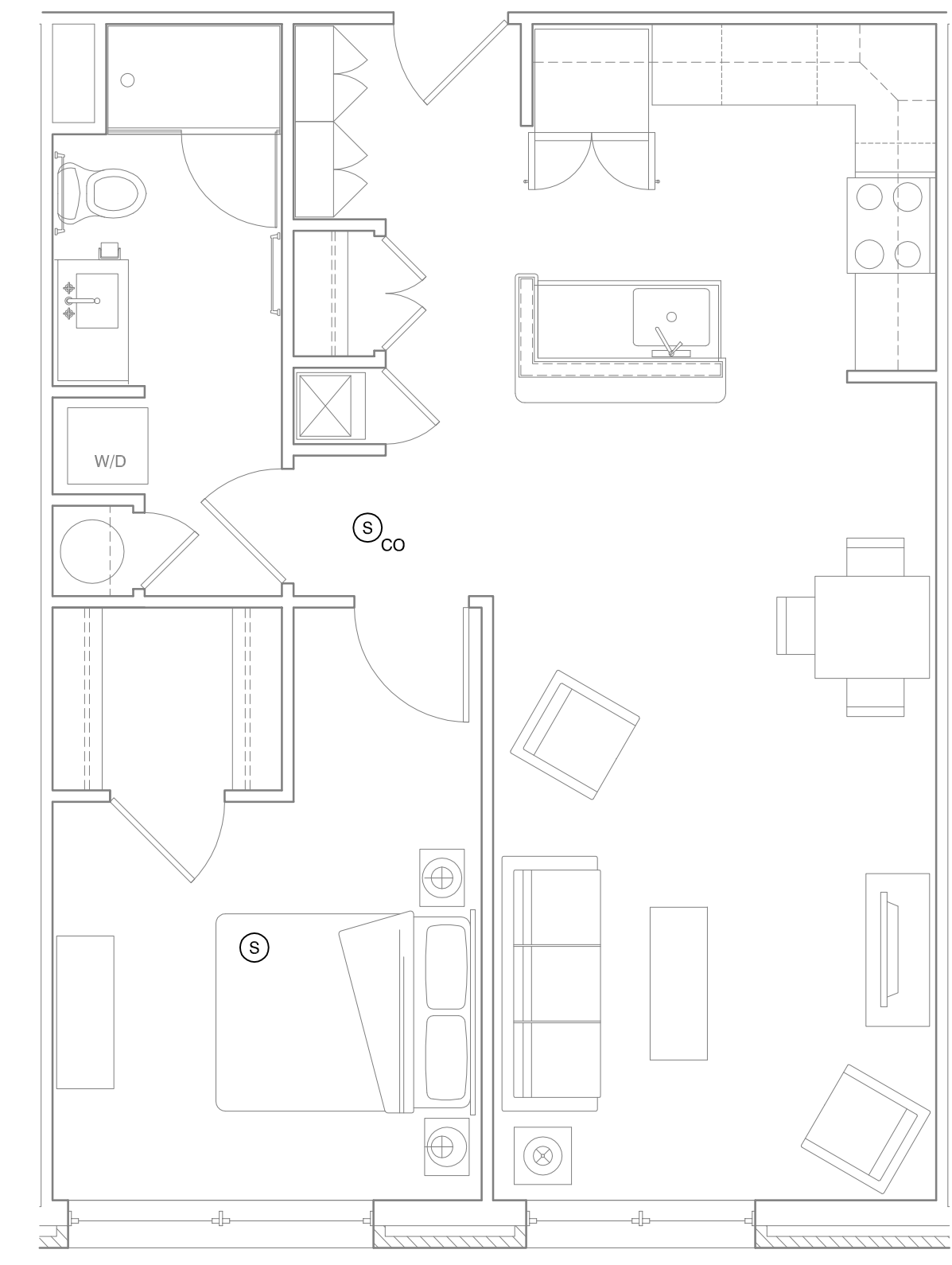
**A4** 1 BEDROOM UNIT FIRE ALARM PLAN  
 1/4" = 1'-0"; UNITS: 204, 304, 404, 504



**A3** 1 BEDROOM UNIT FIRE ALARM PLAN  
 1/4" = 1'-0"; UNITS: 206, 306, 406, 506



**A2** 1 BEDROOM UNIT FIRE ALARM PLAN  
 1/4" = 1'-0"; UNITS: 207, 307, 407, 507



**A1** 1 BEDROOM UNIT FIRE ALARM PLAN  
 1/4" = 1'-0"; UNITS: 202, 302, 402, 502

FIRE ALARM NOTES		FIRE ALARM LEGEND	
1. HEARING IMPAIRED ROOMS SHALL BE EQUIPPED WITH ACCESSIBLE DEVICES SUCH AS, BUT NOT LIMITED TO THE FOLLOWING: FIRE ALARM STROBES, SMOKE DETECTOR STROBES, CARBON MONOXIDE STROBES, DOOR LIGHT/BUZZERS AND TELEPHONES WITH VOLUME CONTROLS COMPATIBLE WITH THE PHONE SYSTEM.		SYMBOL	DESCRIPTION
2. DEVICE COLORS TO BE WHITE WHERE PERMITTED BY CODE.		[S]	STROBE LIGHT
3. CONTRACTOR HAS OPTION OF COMBINING FIRE SAFETY DEVICES WITHIN THE SAME DEVICE		(S) CO	COMBINATION SMOKE DETECTOR/CARBON MONOXIDE DETECTOR WITH SOUNDER BASE
4. CONTRACTOR SHALL COORDINATE CEILING DEVICES WITH FLOOR JOIST AND ADJUST LOCATIONS +/- 6 INCHES.		(S)	SMOKE DETECTOR WITH SOUNDER BASE
5. PROVIDE VISIBLE NOTIFICATION IN HEARING IMPAIRED ROOMS AS DESIGNATED IN THE ACCESSIBLE ROOM MATRIX. DO NOT ASSUME THAT ALL BARRIER-FREE ROOMS ARE HEARING IMPAIRED ROOMS. REFER TO SCHEDULE AND SPECIFIC ROOM NUMBERS.			NOTE: RESIDENTIAL UNIT FIRE ALARM DEVICE LOCATIONS SHOWN ON PLANS ARE APPROXIMATE. DESIGN BUILD SUBCONTRACTOR TO LOCATE AS REQUIRED BY APPLICABLE CODE.