

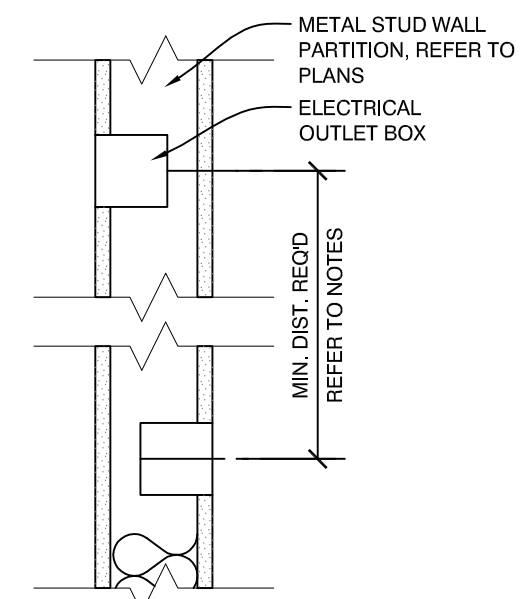
REVISION:

ISSUED:

project architect: KAK
 drawn by: JUD

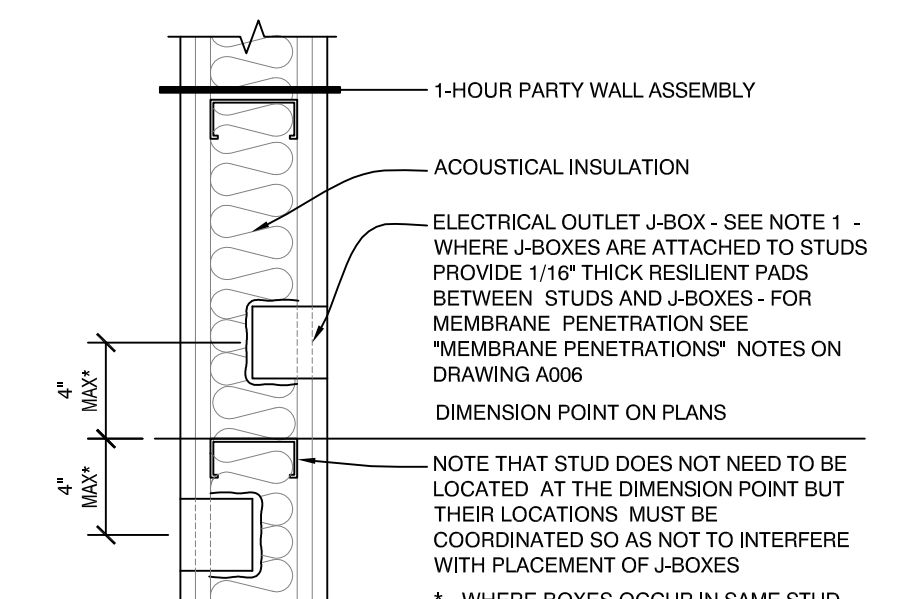
RESIDENTIAL
1 BR UNITS
ELEC. PLANS

sheet number:
E2.01



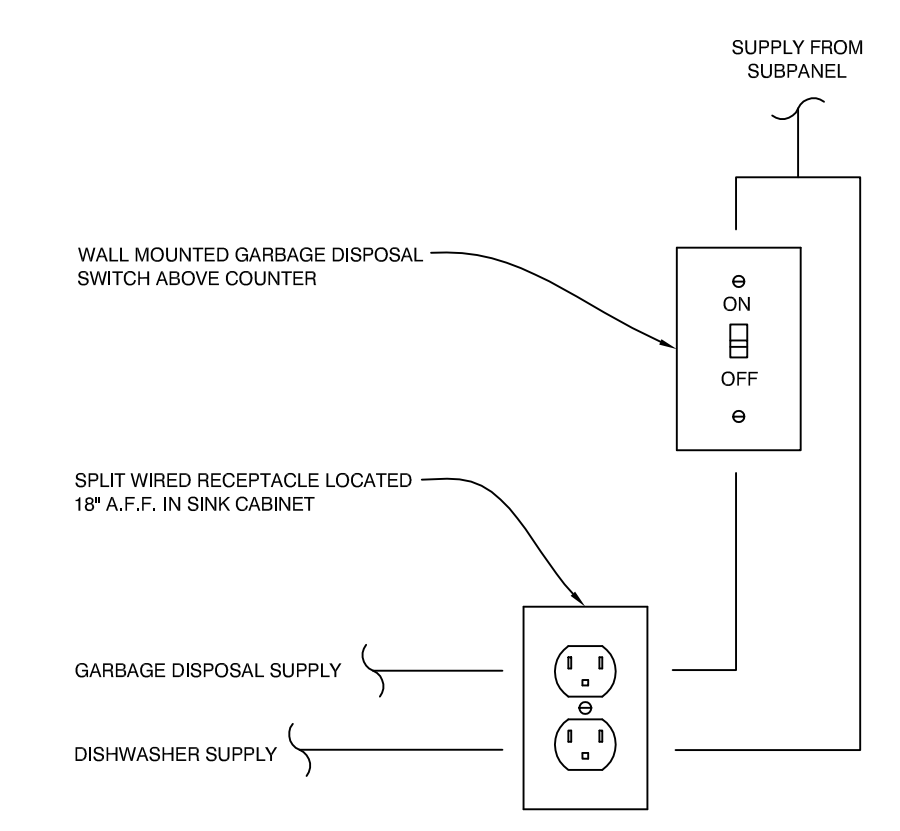
PLAN AT OUTLETS
 1 1/2" = 1'-0"

NOTE:
 1. STACK MULTIPLE BOXES VERTICALLY WHEN ON SAME SIDE OF WALL AS REQUIRED BY INTERIOR DESIGN DRAWINGS.
 2. BOXES LOCATED ON OPPOSITE SIDES OF WALL OR PARTITIONS SHALL BE SEPARATED BY A MINIMUM HORIZONTAL DISTANCE OF 24 INCHES. THE MINIMUM SEPARATION DISTANCE BETWEEN BOXES MAY BE REDUCED WHEN "WALL OPENING PROTECTIVE MATERIALS" (C.I.V.) ARE INSTALLED ACCORDING TO TEH REQUIREMENTS ON THEIR CLASSIFICATION. THE SURFACE AREA OF THE INDIVIDUAL BOXES SHALL NOT EXCEED 16 SQ. IN. THE AGGREGATE SURFACE AREA OF TEH BOXES SHALL NOT EXCEED 100 SQ. IN. PER 100 SQ. FT. OF WALL SURFACE.

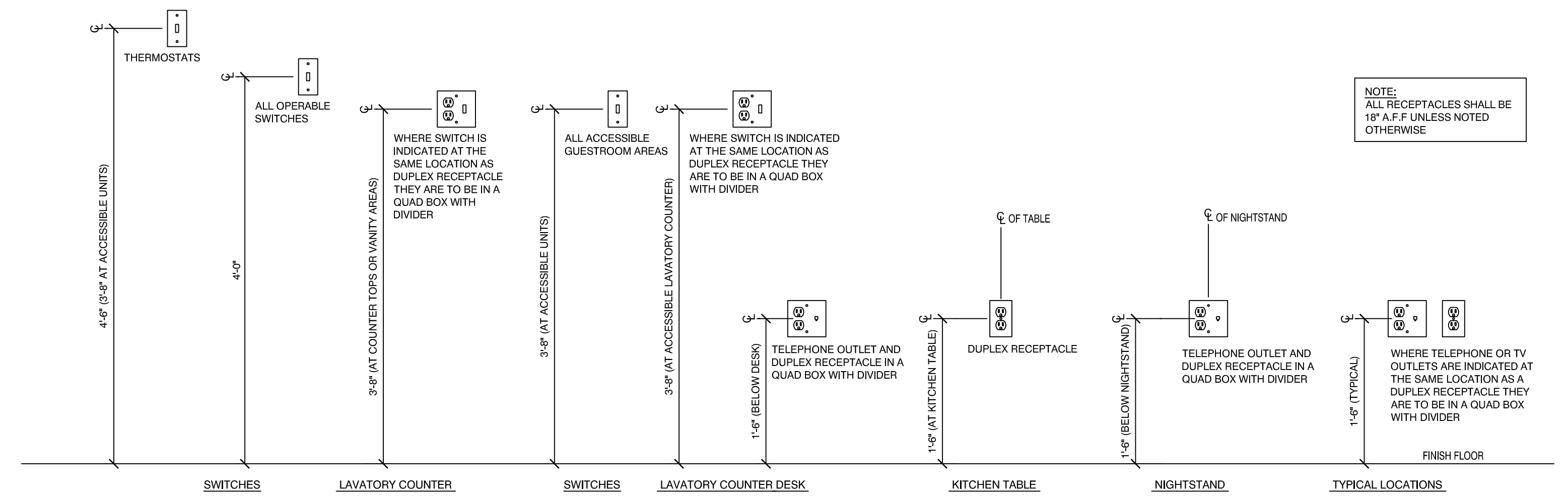


PLAN AT OUTLETS IN RATED WALLS
 1 1/2" = 1'-0"

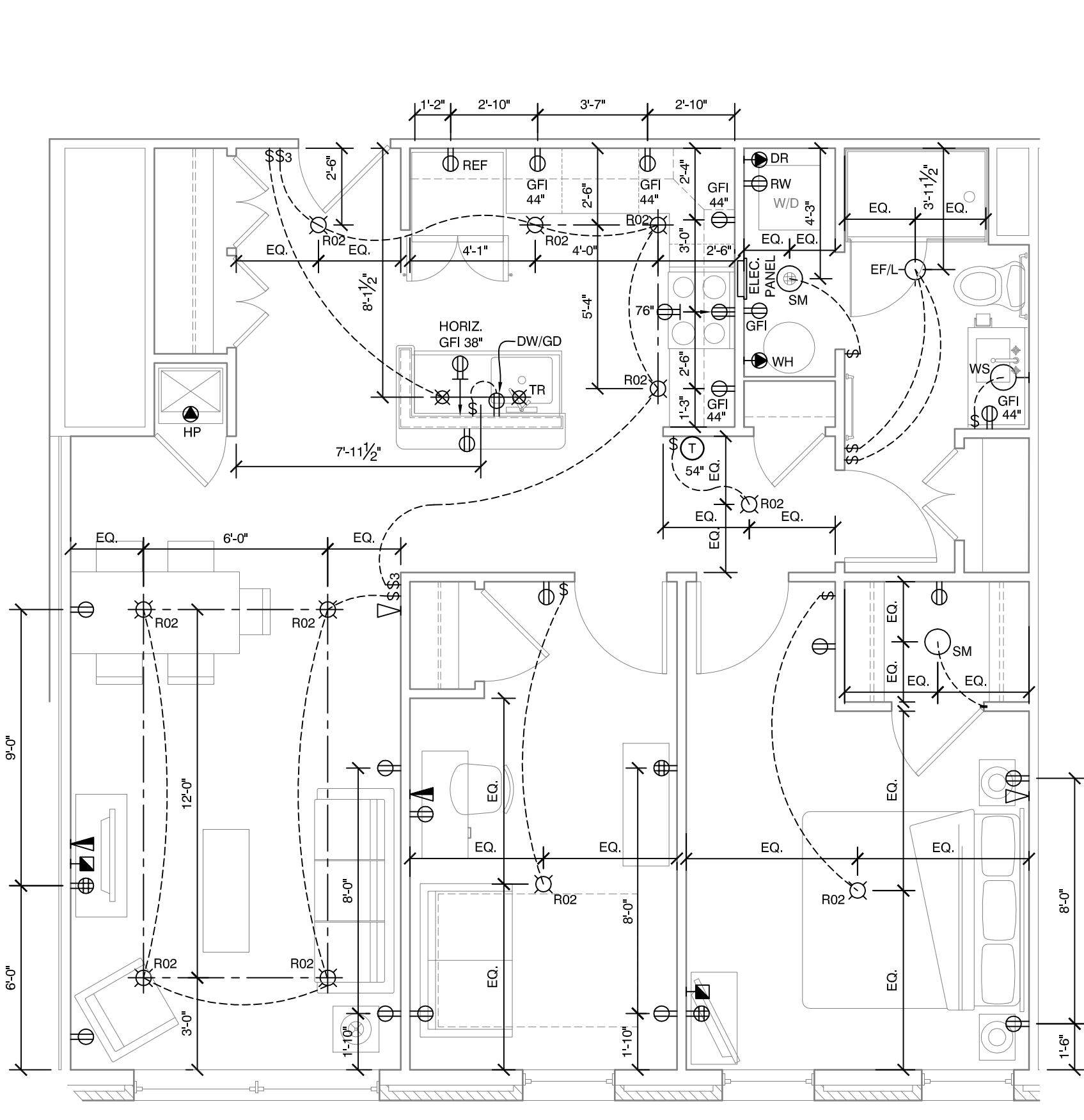
NOTES:
 1. ELECTRICAL OUTLET BOXES AND SIMILAR BOXES FOR T.V., PHONE, ETC. IN PARTY WALLS MUST BE STEEL AND NOT OVER 16" SQUARE. SUCH BOXES ARE TO BE SEALED WITH 3M MPP-45 FIRE BARRIER PUDDY PAD OR EQUAL. STACK MULTIPLE BOXES VERTICALLY WHEN ON SAME SIDE OF WALL. BOXES CANNOT BE BACK-TO-BACK ON OPPOSITE SIDES OF WALL BUT CAN BE LESS THAN 24" APART.
 2. CONTRACTOR TO VERIFY ACCEPTABILITY OF THIS DETAIL WITH LOCAL JURISDICTIONS BUILDING INSPECTOR.
 3. PROVIDE STRAP BETWEEN STUDS AS REQ'D FOR J-BOX



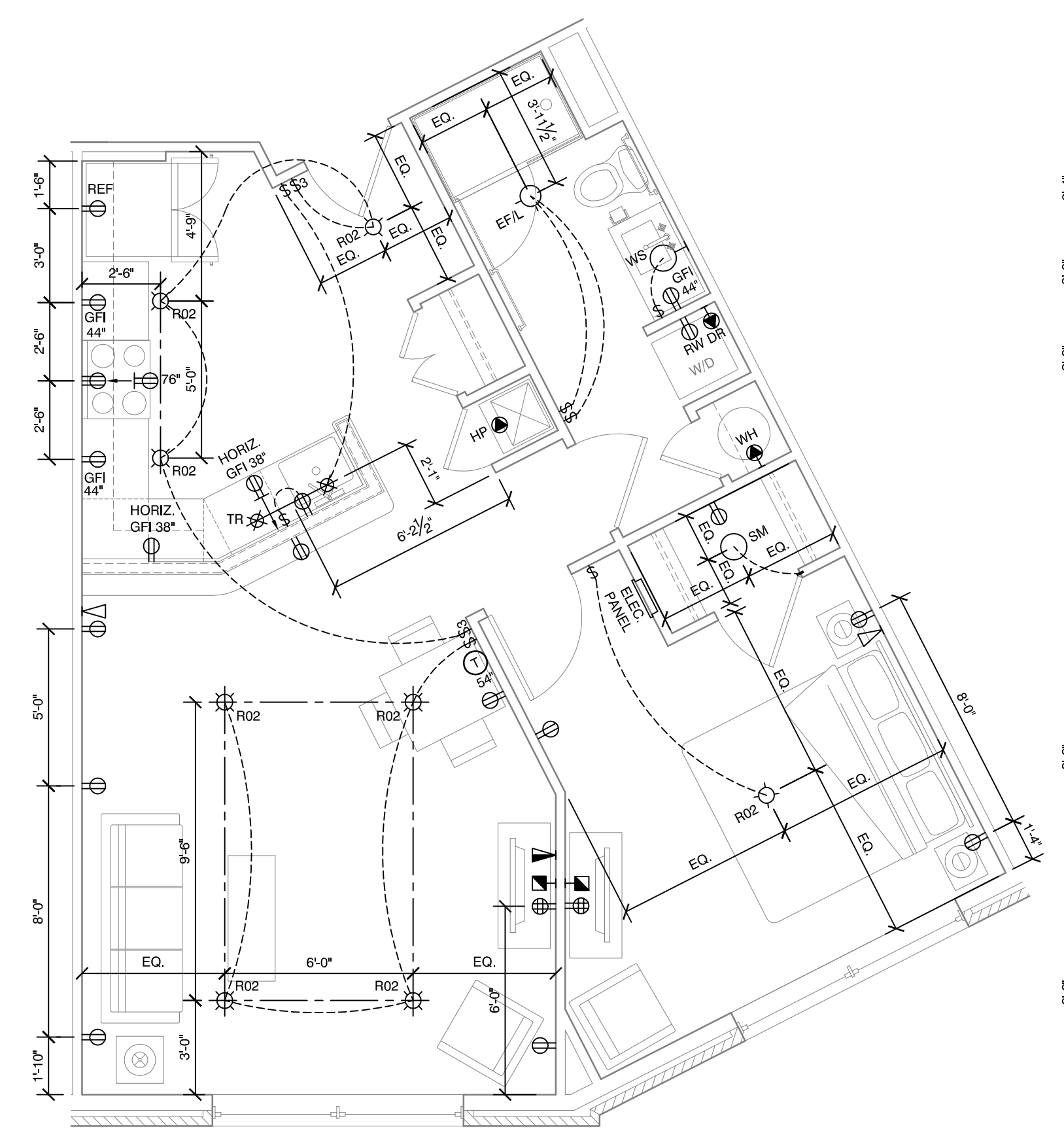
SCHEMATIC DISHWASHER/GARBAGE DISPOSAL DIAGRAM



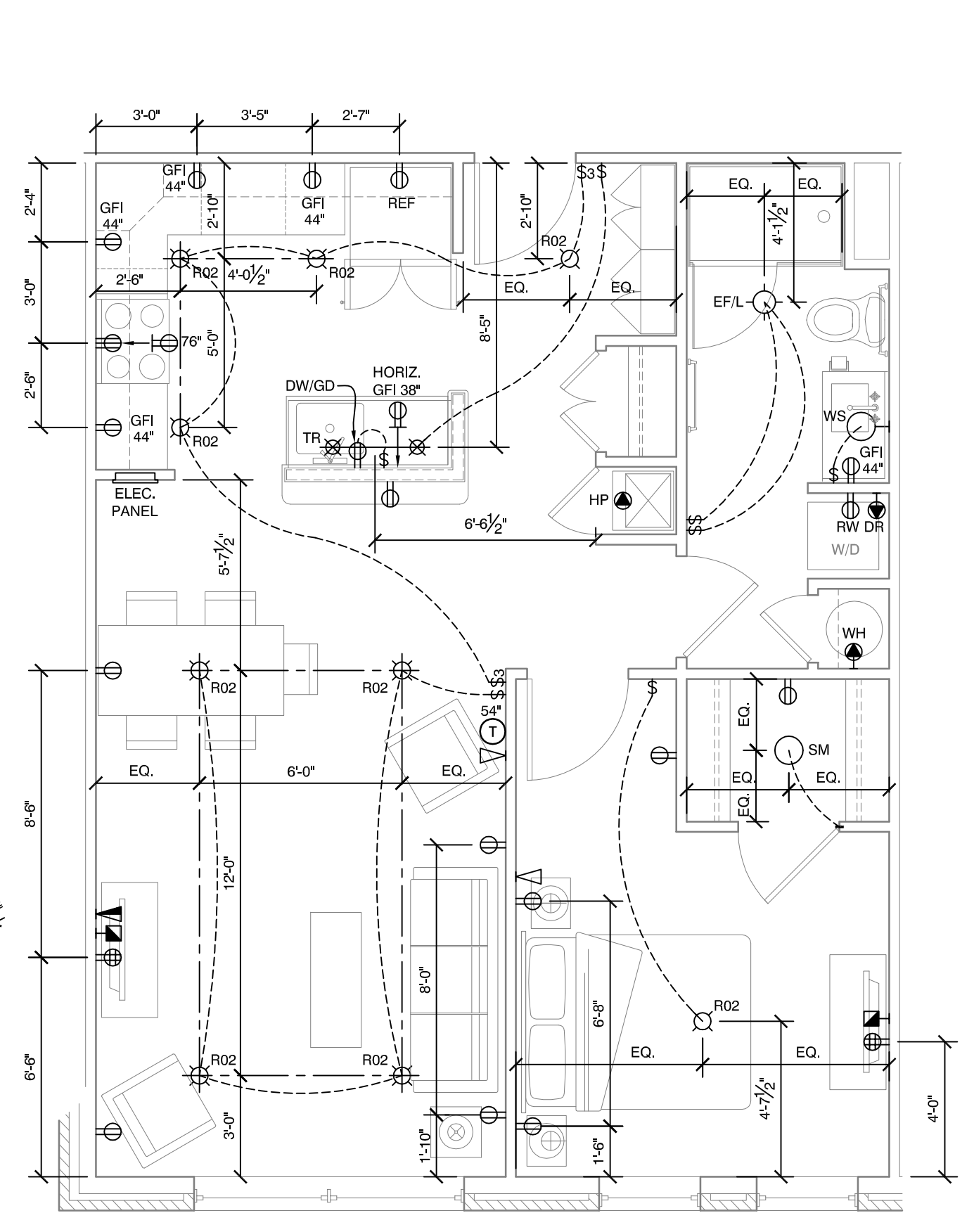
ELECTRICAL OUTLET HEIGHTS BASED ON LOCATIONS



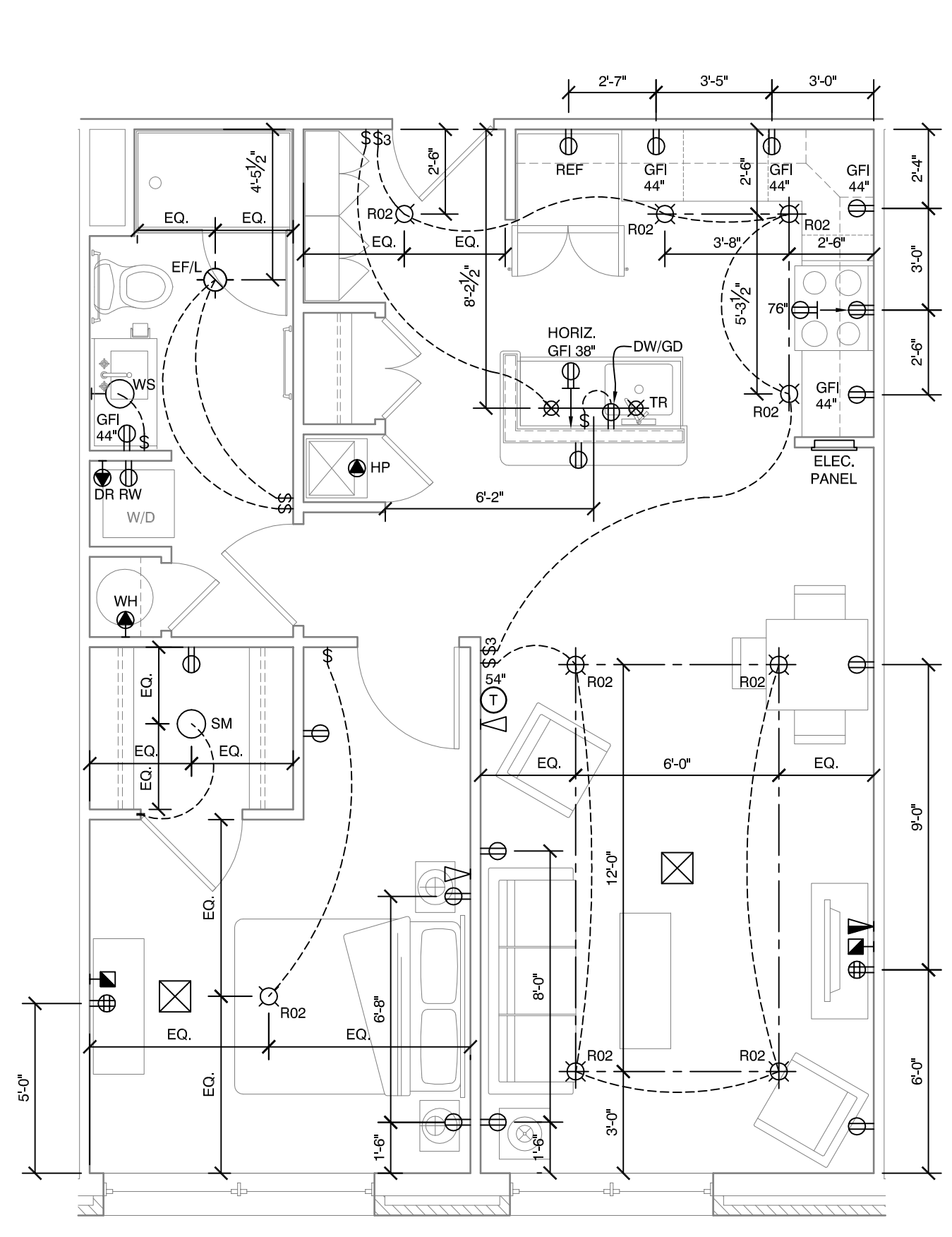
A4 1 BEDROOM UNIT ELECTRIC PLAN
 1/4" = 1'-0"; UNITS: 204, 304, 404, 504



A3 1 BEDROOM UNIT ELECTRIC PLAN
 1/4" = 1'-0"; UNITS: 206, 306, 406, 506



A2 1 BEDROOM UNIT ELECTRIC PLAN
 1/4" = 1'-0"; UNITS: 207, 307, 407, 507



A1 1 BEDROOM UNIT ELECTRIC PLAN
 1/4" = 1'-0"; UNITS: 202, 302, 402, 502