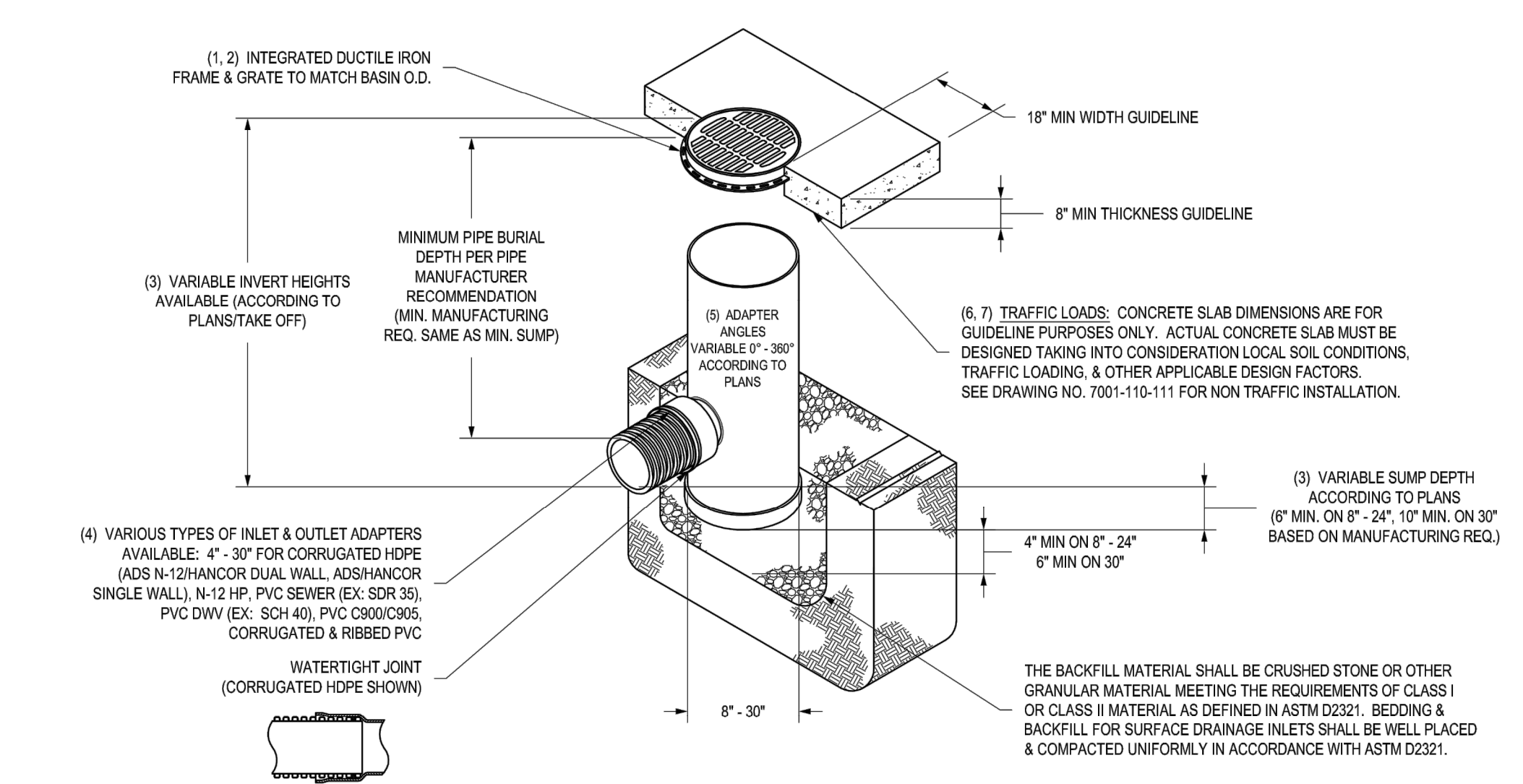
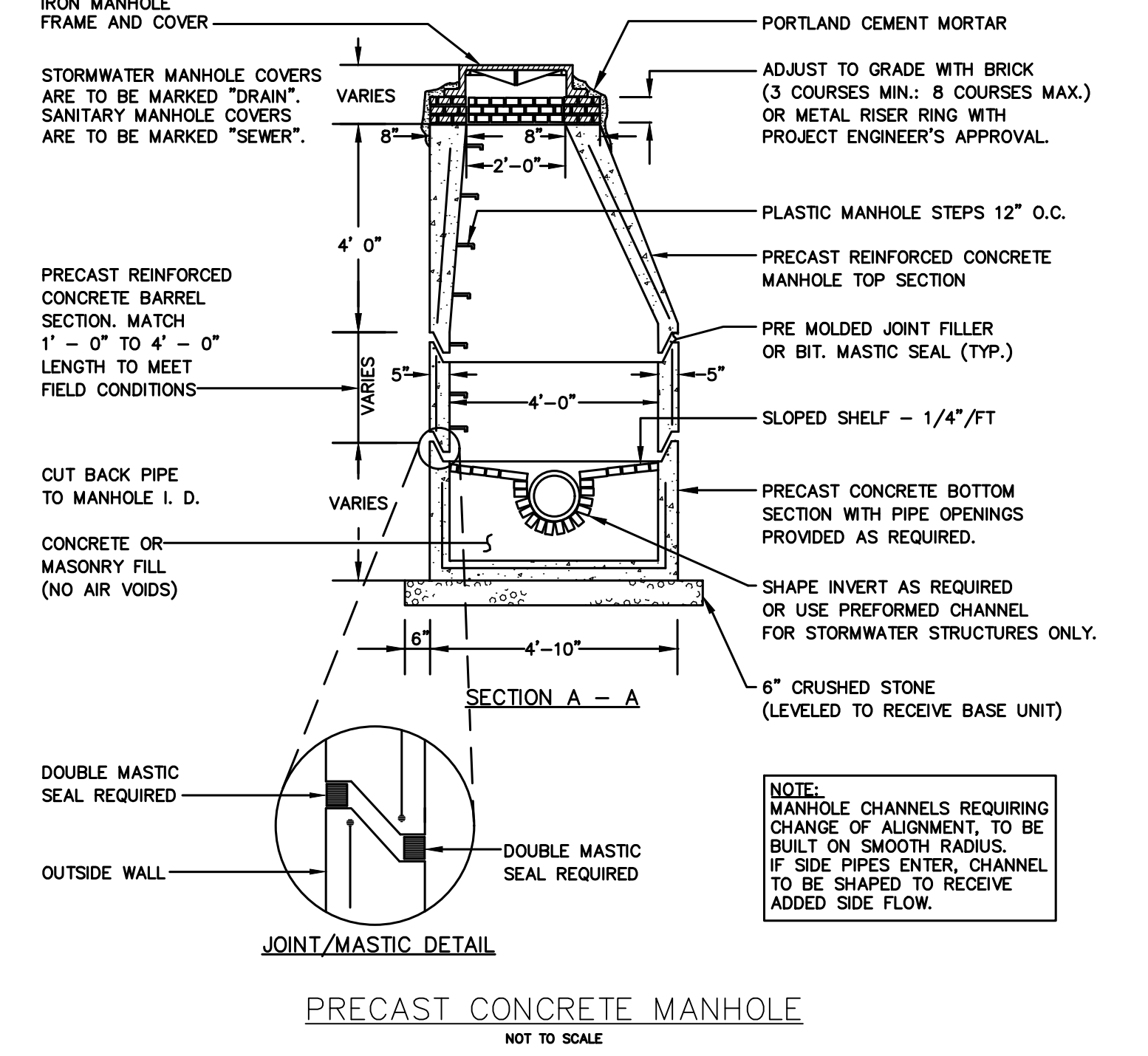
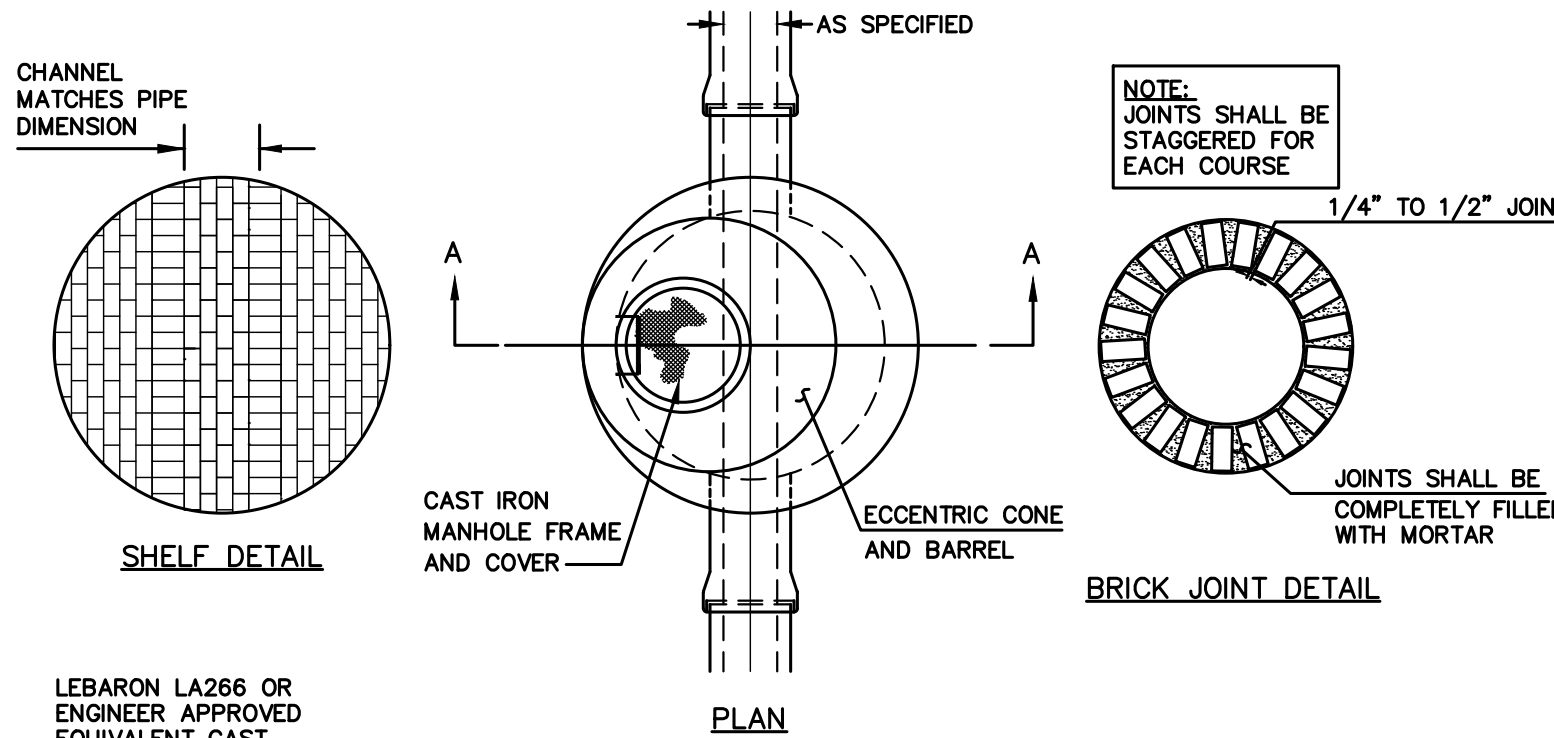


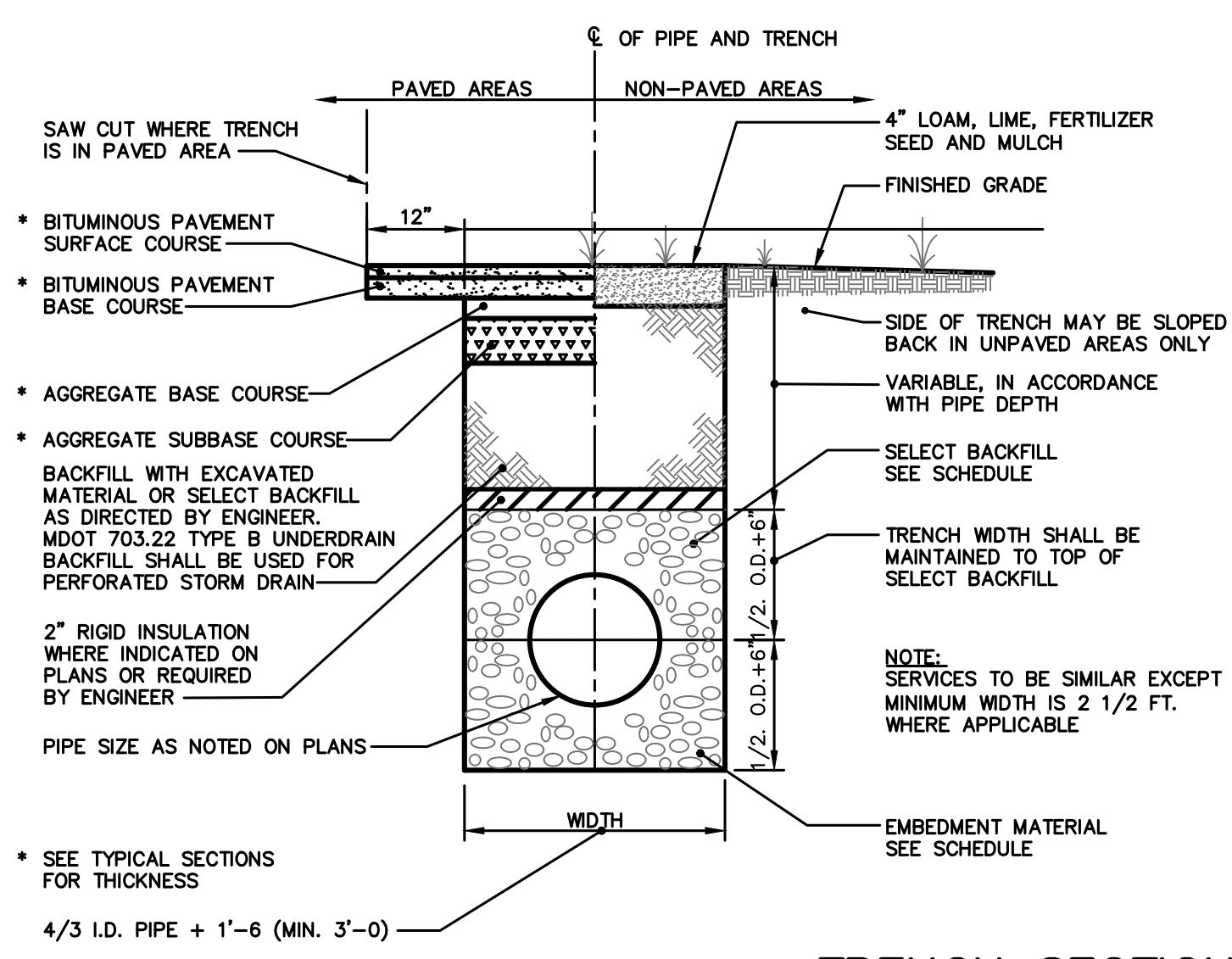
**NYLOPLAST DRAIN BASIN WITH STANDARD GRATE**



1 - 8" - 30" STANDARD GRATES SHALL BE DUCTILE IRON PER ASTM A536 GRADE 70-50-05.	THIS PRINT DISCLOSES SUBJECT MATTER IN WHICH NYLOPLAST HAS PROPRIETARY RIGHTS. THE RECEIPT OR POSSESSION OF THIS PRINT DOES NOT CONFER, TRANSFER, OR LICENSE THE USE OF THE DESIGN OR TECHNICAL INFORMATION SHOWN HEREIN.	3130 WERONA AVE BURLING, GA 30518 PHN (770) 832-2443 FAX (770) 832-2400 www.nyloplast-us.com
2 - 12" - 30" FRAMES SHALL BE DUCTILE IRON PER ASTM A536 GRADE 70-50-05 & 10" STANDARD GRATES FIT DIRECTLY ONTO DRAIN BASINS WITH THE USE OF A PVC BODY TOP. SEE DRAWING NO. 7001-110-045.	REPRODUCTION OF THIS PRINT OR ANY INFORMATION CONTAINED HEREIN, OR MANUFACTURE OF ANY ARTICLE HEREFROM, FOR THE DISCLOSURE TO OTHERS IS FORBIDDEN, EXCEPT BY SPECIFIC WRITTEN PERMISSION FROM NYLOPLAST.	DATE 1-23-06
3 - DRAIN BASIN TO BE CUSTOM MANUFACTURED ACCORDING TO PLAN DETAILS. RISERS ARE NEEDED FOR BASINS OVER 84" DUE TO SHIPPING RESTRICTIONS. SEE DRAWING NO. 7001-110-046.	DATE 12-29-11	DWG NO. 7001-110-144
4 - DRAINAGE CONNECTION STUB JOINT TIGHTNESS SHALL CONFORM TO ASTM D2321 FOR CORRUGATED HDPE (ADS N-12/HANCOR DUAL WALL, N-12 HP, & PVC SEWER (4" - 30").	SCALE 1:48 SHEET 1 OF 1	REV G
5 - ADAPTERS CAN BE MOUNTED ON ANY ANGLE 0° TO 360°. TO DETERMINE MINIMUM ANGLE BETWEEN ADAPTERS SEE DRAWING NO. 7001-110-012.		
6 - 12" - 30" STANDARD GRATES SHALL MEET N-201 LOAD RATING.		
7 - 8" & 10" STANDARD GRATES ARE RATED FOR LIGHT DUTY APPLICATIONS ONLY; NO CONCRETE COLLAR NEEDED FOR LIGHT DUTY RATING.		



**PRECAST CONCRETE MANHOLE**

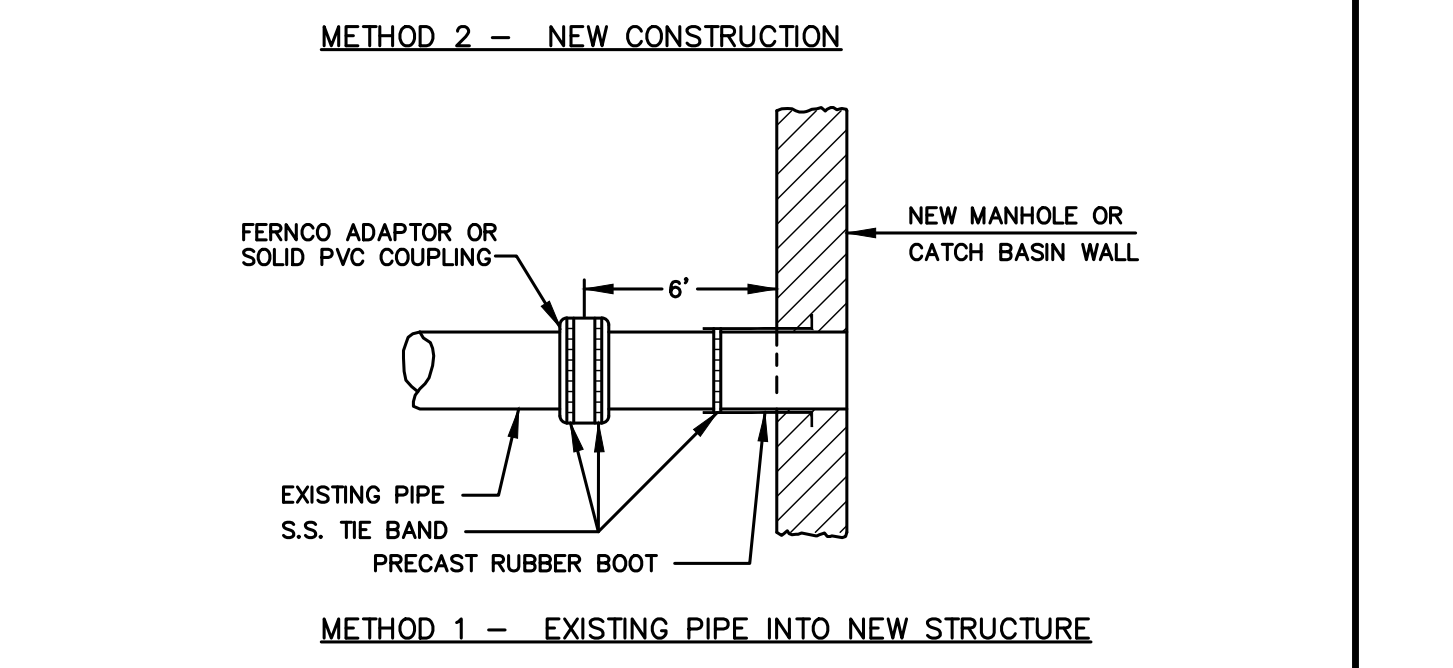
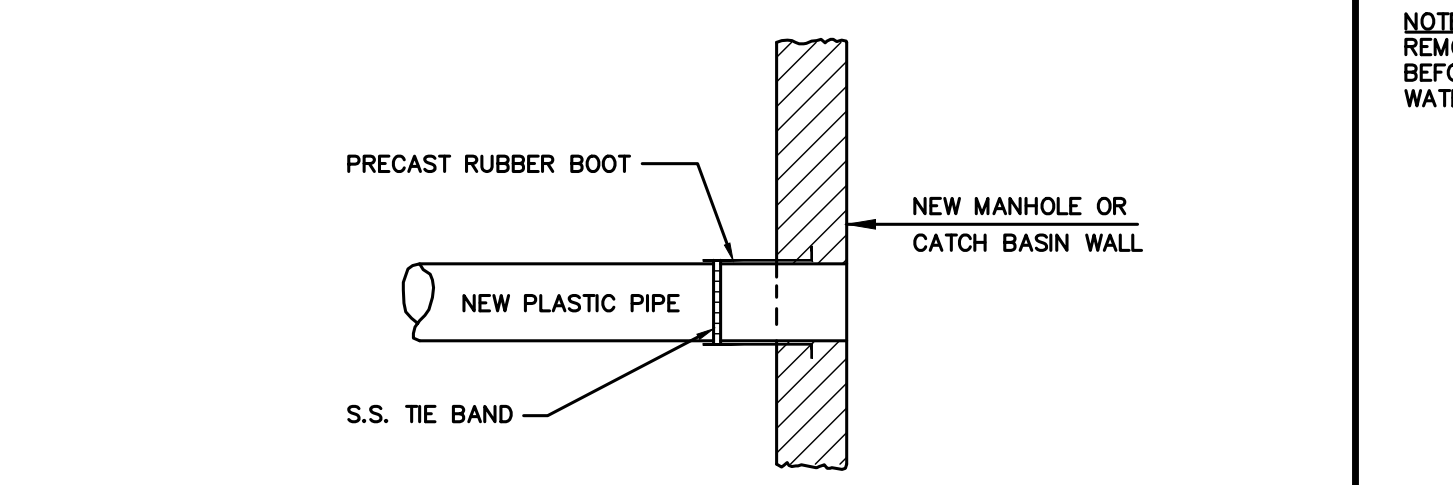


**TRENCH SECTION**

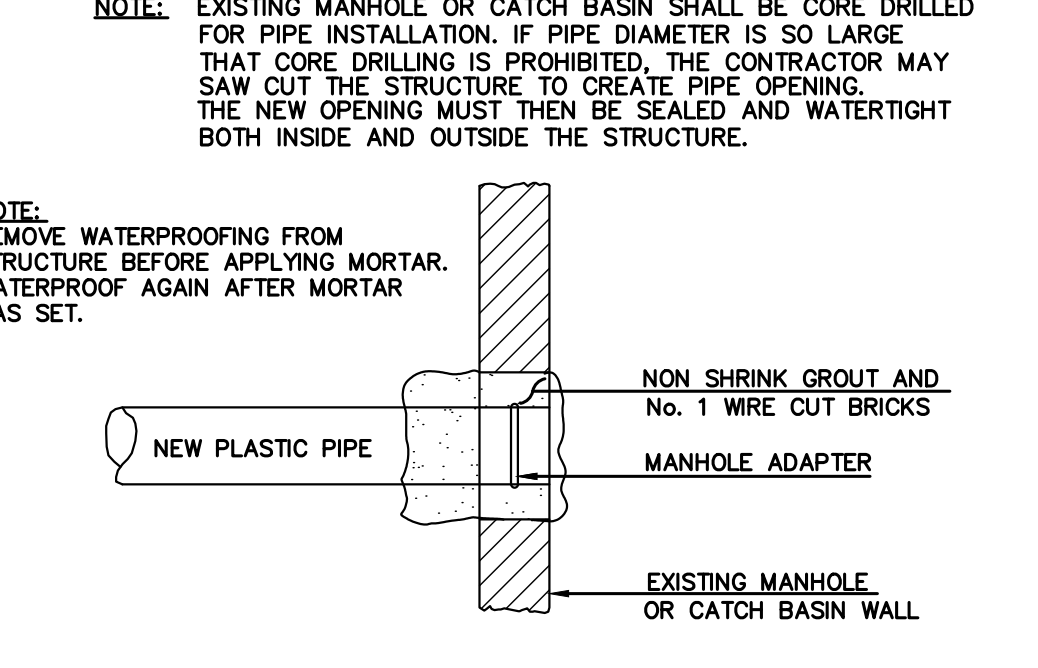
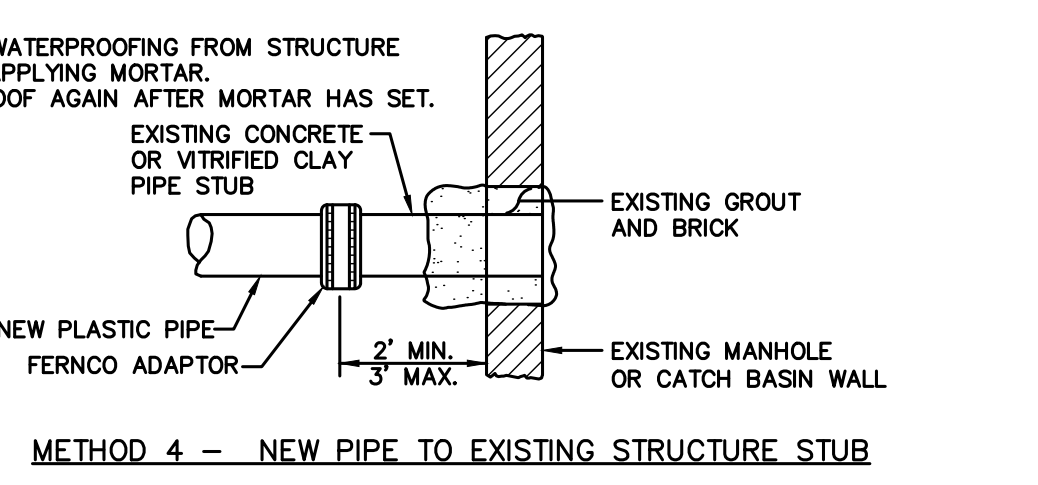
SCHEDULE OF TRENCH BACKFILL

TYPE OF PIPE	EMBEDMENT MATERIAL	SELECT BACKFILL	SELECT BACKFILL ON CITY PROPERTY
CMP DUCTILE IRON RCP	MDOT 703.22 TYPE B UD BACKFILL	MDOT 703.22 TYPE B UD BACKFILL	3/4" CRUSHED STONE, 12" ABOVE TOP OF PIPE
PVC-SDR 35 HDPE	MDOT 703.22 TYPE C 3/4" CRUSHED STONE	MDOT 703.22 TYPE B UD BACKFILL	3/4" CRUSHED STONE, 12" ABOVE TOP OF PIPE
PERFORATED PVC-SDR35 HDPE	MDOT 703.22 TYPE C 3/4" CRUSHED STONE	MDOT 703.22 TYPE C 3/4" CRUSHED STONE	3/4" CRUSHED STONE, 12" ABOVE TOP OF PIPE

NOTE:  
1. BRACING AND SHEETING OR OTHER TRENCH PROTECTION TO BE PROVIDED TO MEET APPLICABLE STATE AND O.S.H.A. SAFETY STANDARDS. ALL SUCH TRENCH PROTECTION TO BE THE RESPONSIBILITY OF THE CONTRACTOR.  
2. INSTALL WARNING TAPE DIRECTLY ABOVE UTILITIES, 12" BELOW FINISH GRADE.  
3. RIBBED CORRUGATED POLYETHYLENE PIPE MATERIAL, SMOOTH WALL INTERIOR, IS NOT PERMITTED WITHIN CITY PROPERTY, EXCEPT FOR UNDERDRAIN.

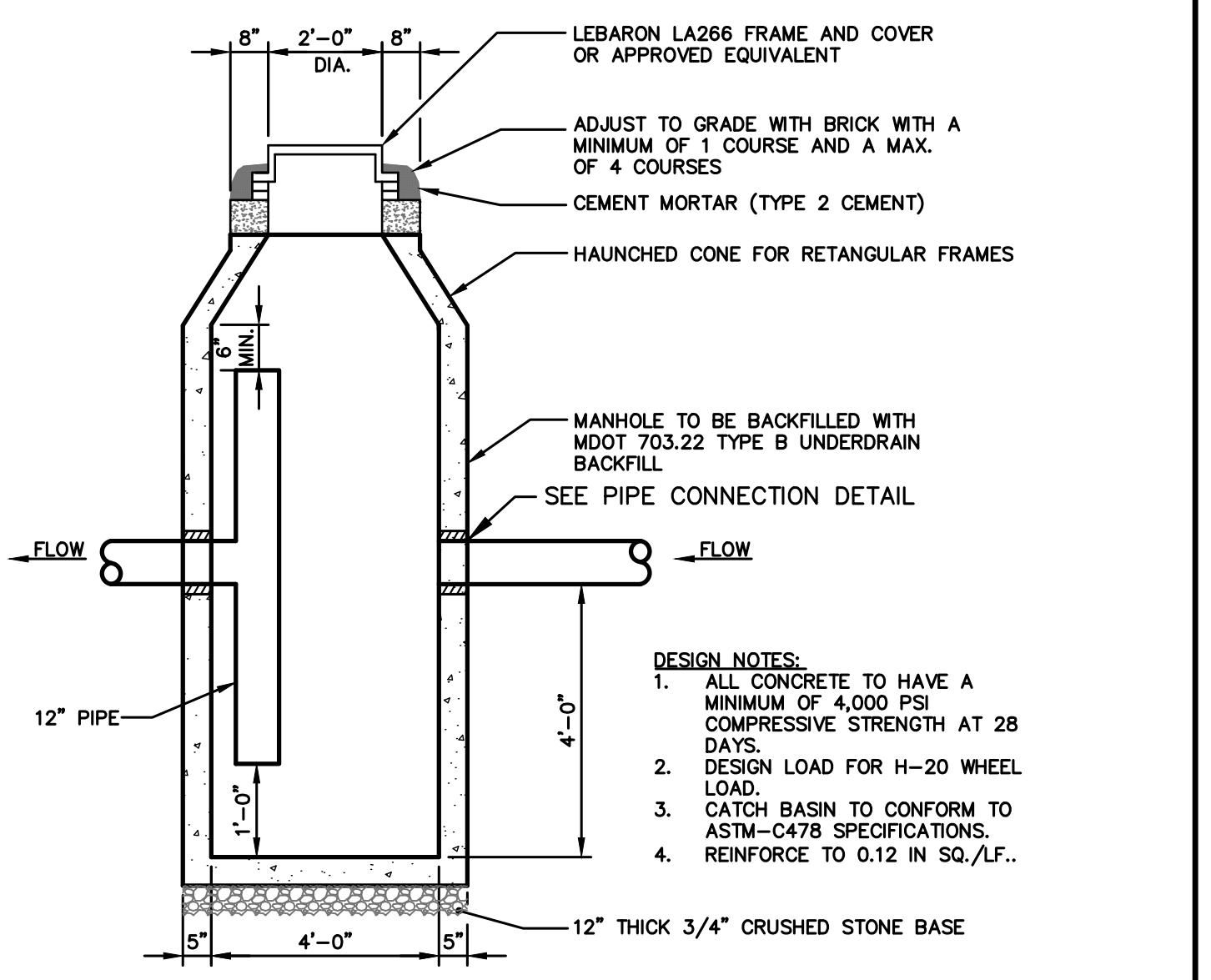


**PLASTIC PIPE CONNECTIONS**

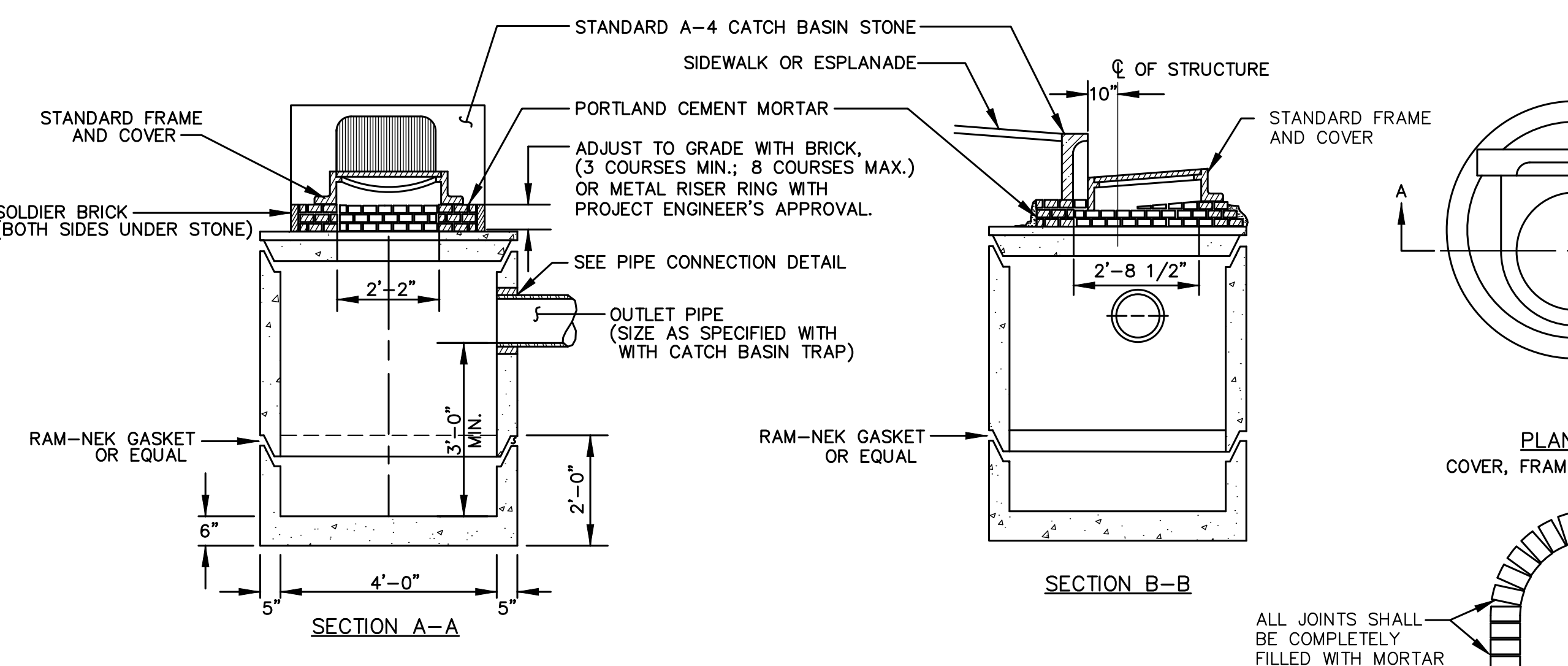


**PLASTIC PIPE CONNECTIONS**

- GENERAL NOTES FOR MANHOLES AND CATCH BASINS**
- ALL CONCRETE SHALL HAVE A MINIMUM ULTIMATE COMPRESSIVE STRENGTH OF 4000 LBS. PER SQ. INCH AT THE END OF 28 DAYS, UNLESS OTHERWISE NOTED.
  - MANHOLES MAY BE CONSTRUCTED OF PRECAST REINFORCED CONCRETE, OR CAST IN PLACE.
  - PRECAST REINFORCED CONE BARREL MANUFACTURED PER ASTM SPEC. C-478.
  - ALL STORM AND SEWER MANHOLE COVERS SHALL BE SOLID AND SHALL HAVE ONE 7/8" DIAMETER DRILLED PICK HOLE LOCATED 8" FROM THE CENTER OF THE COVER.
  - ALL SANITARY MANHOLE COVERS SHALL HAVE "SEWER" CAST INTO THE COVER. ALL STORMWATER/RAIN MANHOLE COVERS SHALL HAVE "DRAIN" CAST INTO THE COVER.
  - ALL MANHOLE RISERS SHALL BE ETHERIDGE 24" OR APPROVED EQUAL.
  - SEWER BRICK SHALL CONFORM TO ASTM SPEC. DESIGNATE ON C-32-63, GRADE MA AND SA.
  - ALL SANITARY MANHOLES SHALL HAVE A WATERPROOFING COATING APPLIED TO THE EXTERIOR SURFACE.
  - CATCH BASIN FRAMES FOR TYPE A4 CATCH BASIN CURB INLETS SHALL BE ETHERIDGE DR5A OR APPROVED EQUAL.
  - CASTINGS SHALL CONFORM TO ASTM DESIGNATION A48-CLASS 35.
  - EXISTING MANHOLES, CATCH BASINS, FRAMES, AND COVERS SHALL BE SALVAGED BY THE CONTRACTOR, AND SHALL REMAIN THE PROPERTY OF THE CITY OF PORTLAND.
  - ALL CATCH BASIN OUTLETS SHALL BE INSTALLED WITH A CASCO TRAP. SEE FIGURE II-09.

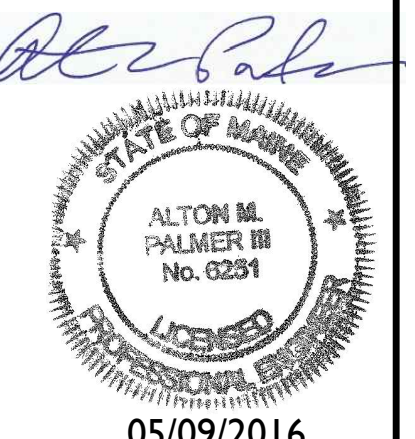


**OIL/WATER SEPARATOR MANHOLE**



**PRECAST CONCRETE CATCH BASIN - TYPE "E"**

NOTE: THIS PLAN SET IS ISSUED FOR PERMITTING PURPOSES AND SHALL NOT BE USED FOR CONSTRUCTION.



C:\CAD WORKING\2018 - York Street\dwg\3018-DETAILS.dwg 5/9/2016 9:18 AM

Rev.	Date	Revision
3	05/09/16	RESPONSE TO CITY COMMENTS
2	03/10/16	RESPONSE TO CITY COMMENTS
1	11/13/15	RESPONSE TO CITY COMMENTS

SITE PLAN REVIEW	Date	By
Issued For	8/7/15	AMP

Design: CEH	Draft: CG	Date: JUNE 2015
Checked: AMP	Scale: AS SHOWN	Job No.: 3018
File Name: 3018-DETAILS.dwg		
This plan shall not be modified without written permission from Gorrill-Palmer Consulting Engineers, Inc.(GPCEI). Any alterations, authorized or otherwise, shall be at the user's sole risk and without liability to GPCEI.		



Relationships. Responsiveness. Results.  
www.gorrillpalmer.com  
207.772.2515

Drawing Name:	<b>Details 2</b>
Project:	<b>York Street - Mixed Use Development</b> Portland, Maine
Client:	<b>York Street, LLC</b> 36 Danforth Street, Portland, ME 04101

Drawing No.  
**C5.02**