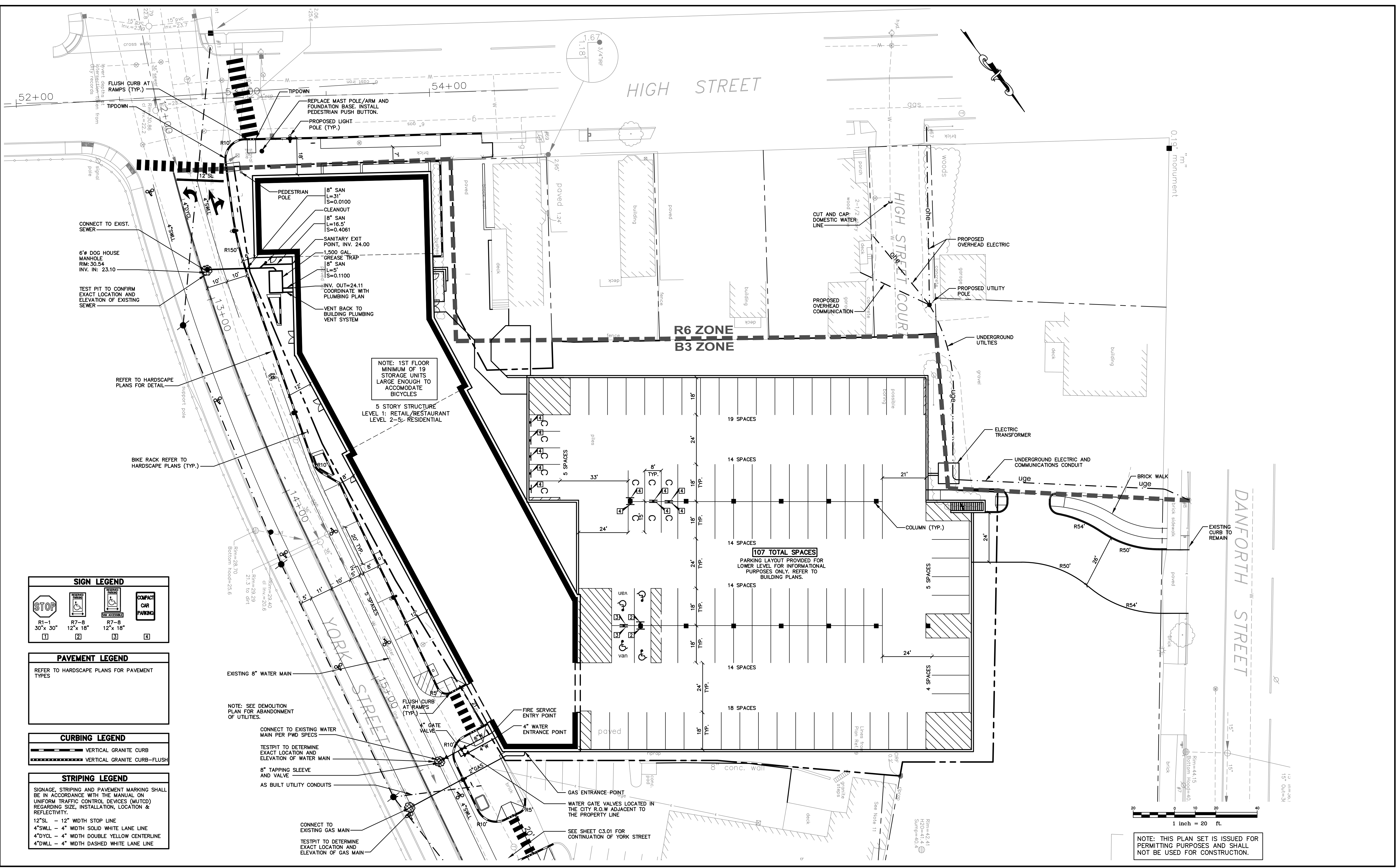


U:\2018_Openeas Construction_Land Development Design and Traffic for York Street Apartments_Portland ME.VZ - CAD\DWG_3018-SP.dwg 5/10/2016 4:49 PM



- SIGN LEGEND**
- R1-1 30" x 30" STOP
 - R7-8 12" x 18" COMPACT CAR PARKING
- PAVEMENT LEGEND**
- REFER TO HARDSCAPE PLANS FOR PAVEMENT TYPES
- CURBING LEGEND**
- VERTICAL GRANITE CURB
 - VERTICAL GRANITE CURB-FLUSH
- STRIPING LEGEND**
- SIGNAGE, STRIPING AND PAVEMENT MARKING SHALL BE IN ACCORDANCE WITH THE MANUAL ON UNIFORM TRAFFIC CONTROL DEVICES (MUTCD) REGARDING SIZE, INSTALLATION, LOCATION & REFLECTIVITY.
- 12"SL - 12" WIDTH STOP LINE
 - 4"SHL - 4" WIDTH SOLID WHITE LANE LINE
 - 4"DYL - 4" WIDTH DOUBLE YELLOW CENTERLINE
 - 4"DWL - 4" WIDTH DASHED WHITE LANE LINE

Rev.	Date	Revision
3	05/09/16	RESPONSE TO CITY COMMENTS
2	03/10/16	RESPONSE TO CITY COMMENTS
1	11/13/15	RESPONSE TO CITY COMMENTS

SITE PLAN REVIEW	Date	By
Issued For	8/7/15	AMP

Design: DER Draft: CG Date: JUNE 2015
 Checked: AMP Scale: 1"=20' Job No.: 3018
 File Name: 3018-SP.dwg

This plan shall not be modified without written permission from Gorrill-Palmer Consulting Engineers, Inc.(GPCEI). Any alterations, authorized or otherwise, shall be at the user's sole risk and without liability to GPCEI.



Relationships. Responsiveness. Results.
 www.gorrillpalmer.com
 207.772.2515

Drawing Name: **Site and Utility Plan**
 Project: **York Street - Mixed Use Development**
 Client: **York Street, LLC**
 36 Danforth Street, Portland, ME 04101

Drawing No. **C3.02**