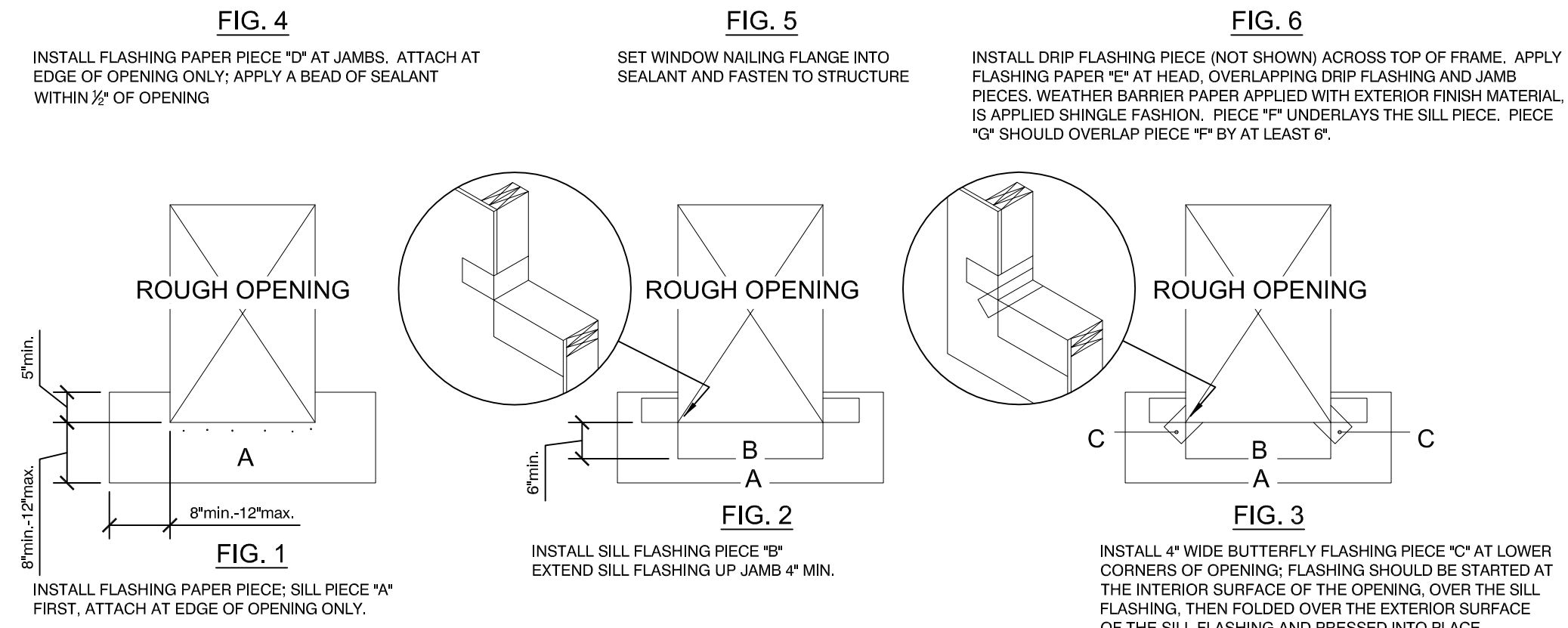
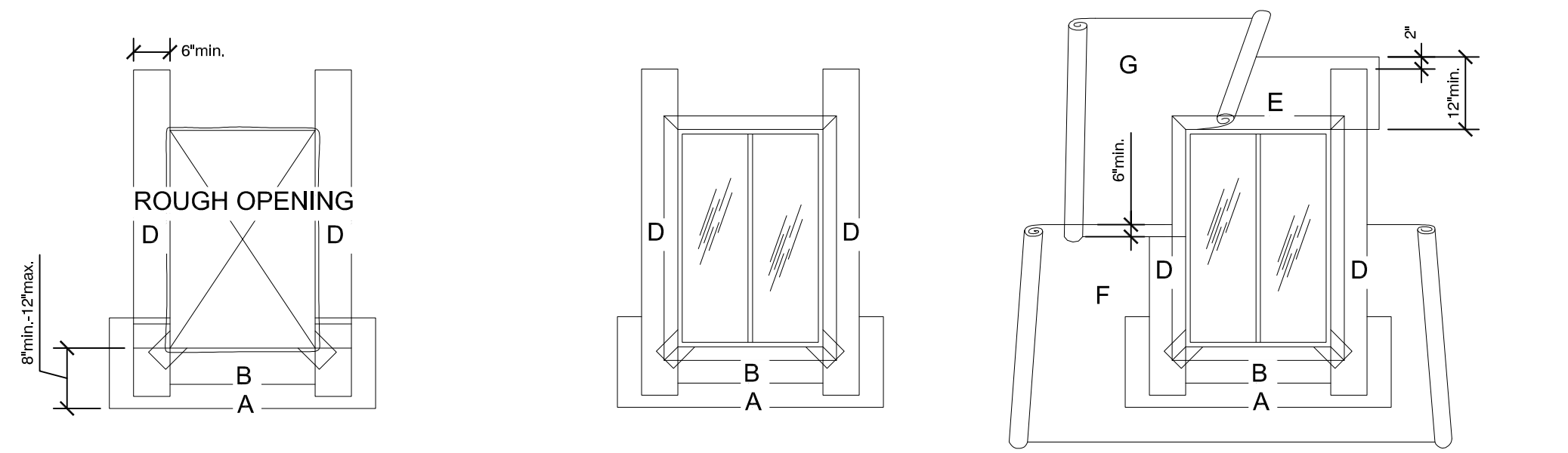
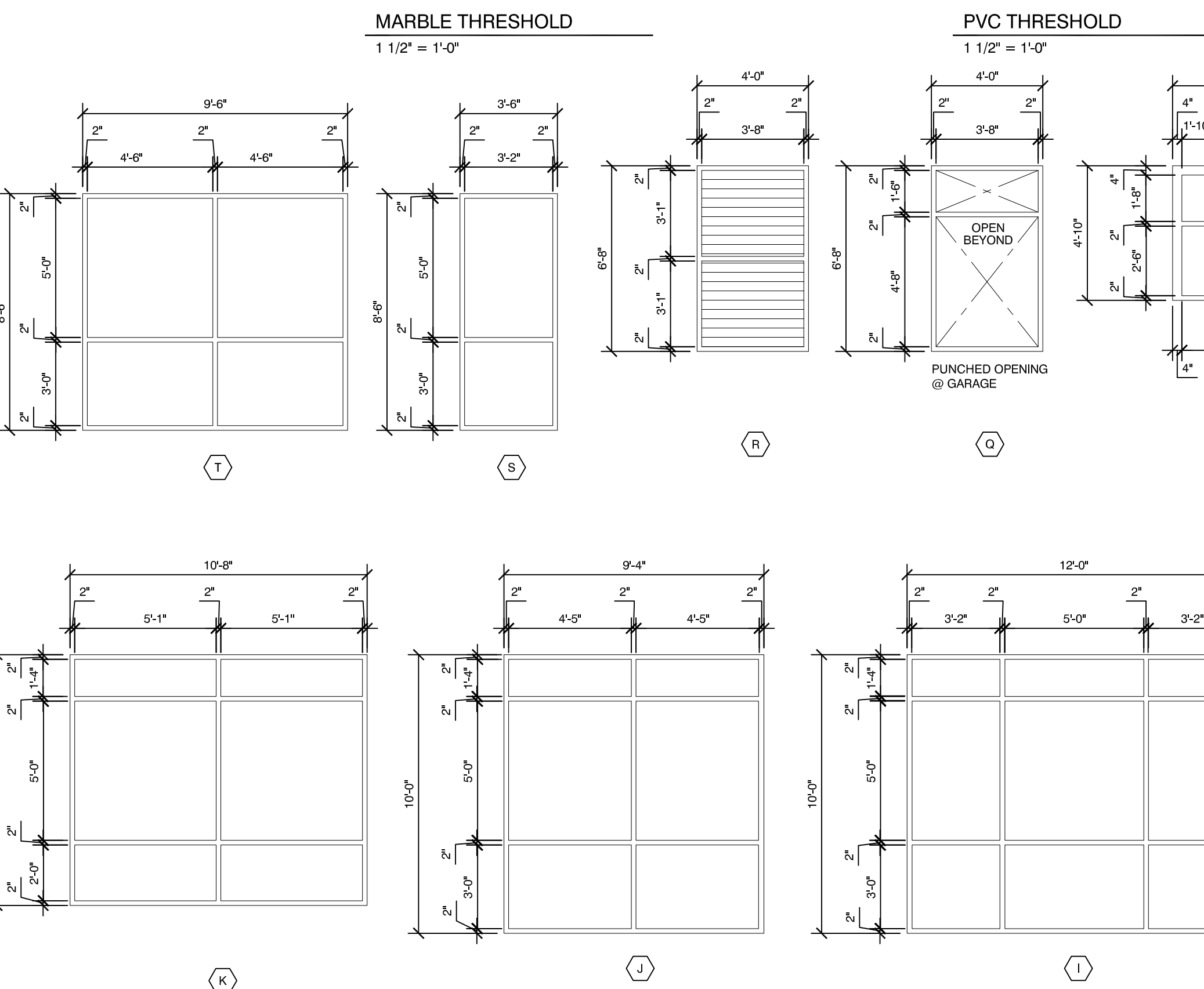
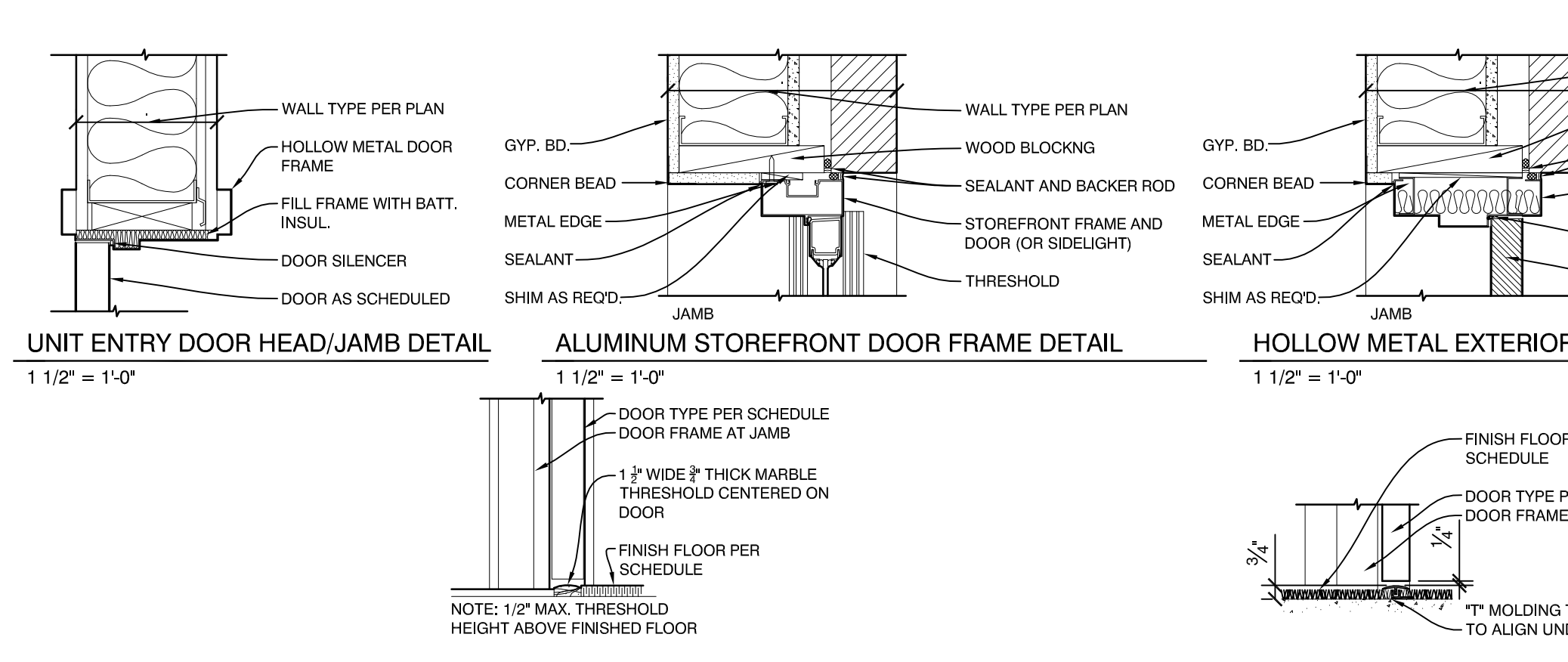


Monday, May 09, 2016 10:47:37 AM

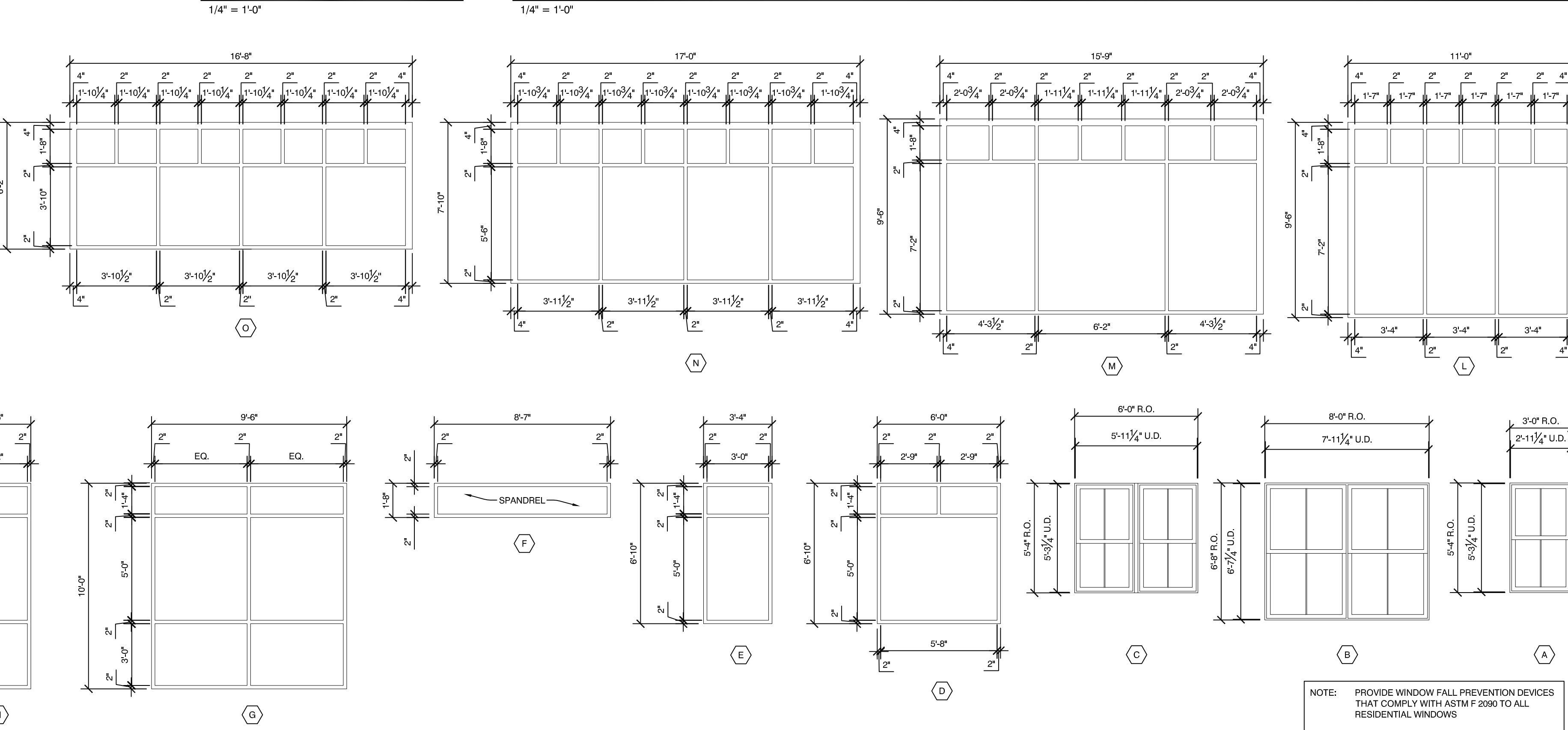
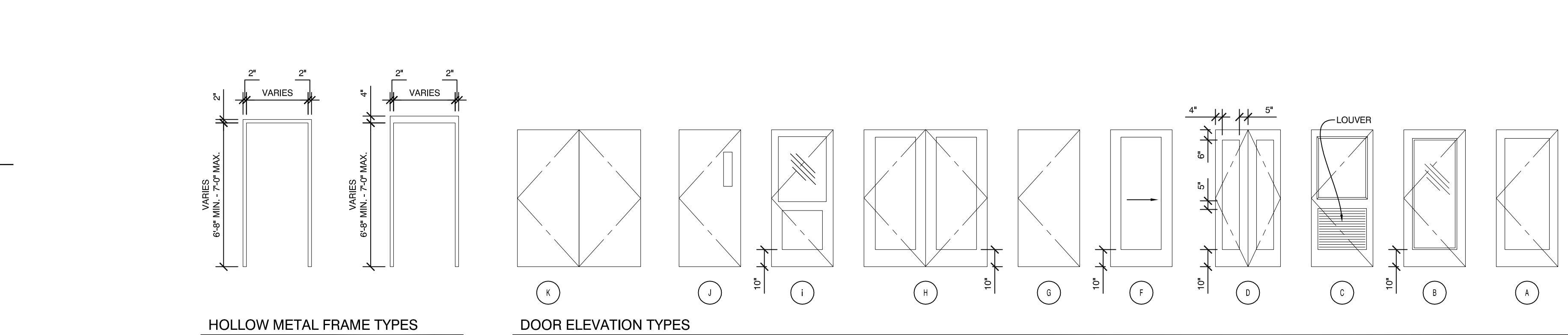
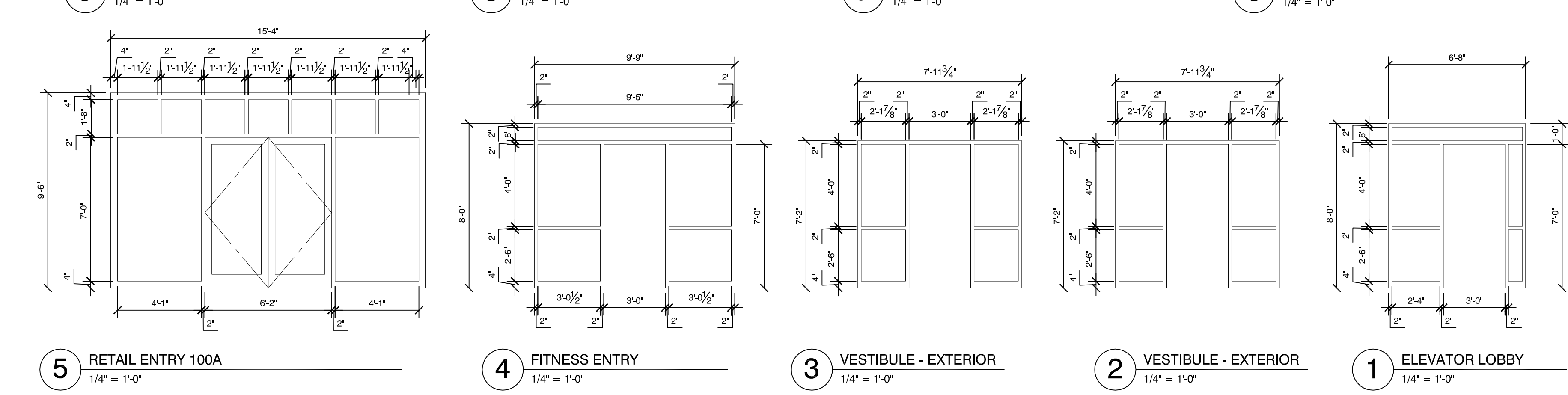
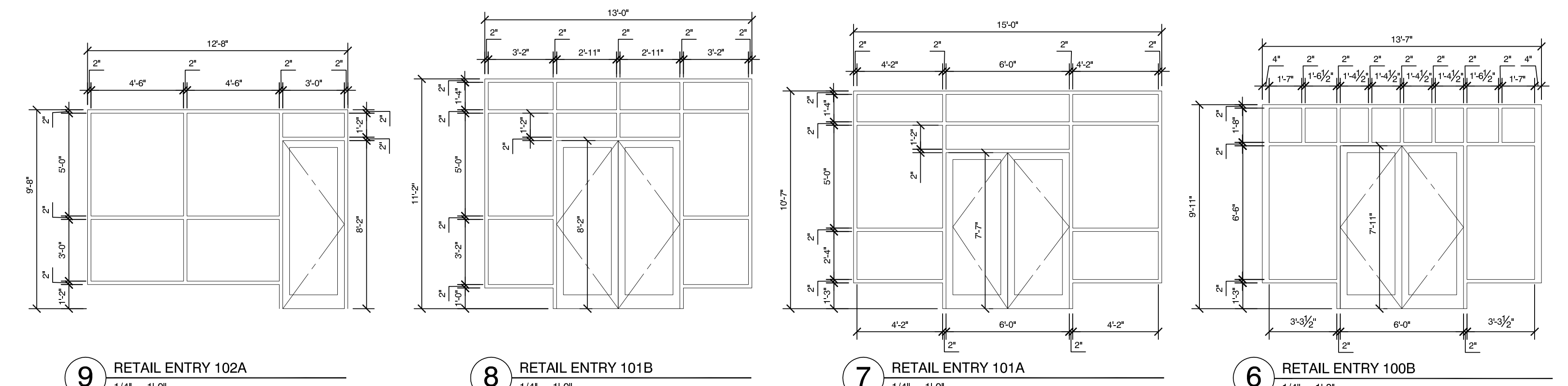


MATERIALS
FLASHING MEMBRANE AND WEATHER BARRIER PAPER TO BE TYVEK COMMERCIAL WRAP OR APPROVED EQUAL AND RELATED ACCESSORIES AS RECOMMENDED BY THE MANUFACTURER FOR A COMPLETE AND WEATHERTIGHT SYSTEM.

NOTES
1. IT IS IMPORTANT THAT PROPER SHINGLING IS MAINTAINED. WEATHER BARRIER SHALL BE INSTALLED FROM THE BOTTOM OF THE BUILDING UP TO ENSURE PROPER SHINGLING.
2. REFER TO MANUFACTURER'S INSTRUCTIONS FOR INSTALLATION OF THRU-WALL FLASHING TO PROPERLY INTEGRATE WEATHER BARRIER WITH THE THROUGH-WALL FLASHING.
3. SECURE WEATHER BARRIER BY FASTENING INTO THE STUDS WITH APPROVED FASTENERS AT THE REQUIRED SPACINGS. SEE MANUFACTURER'S INSTRUCTIONS.
4. TO AVOID DAMAGE TO WEATHER BARRIER, SPECIAL ATTENTION SHALL BE TAKEN TO ENSURE THAT THE WEATHER BARRIER IS PRESSED TIGHTLY INTO ANY INSIDE CORNERS BEFORE FASTENING.
5. TAPE ALL HORIZONTAL AND VERTICAL SEAMS WITH MANUFACTURER'S SPECIFIED SEAM TAPE.

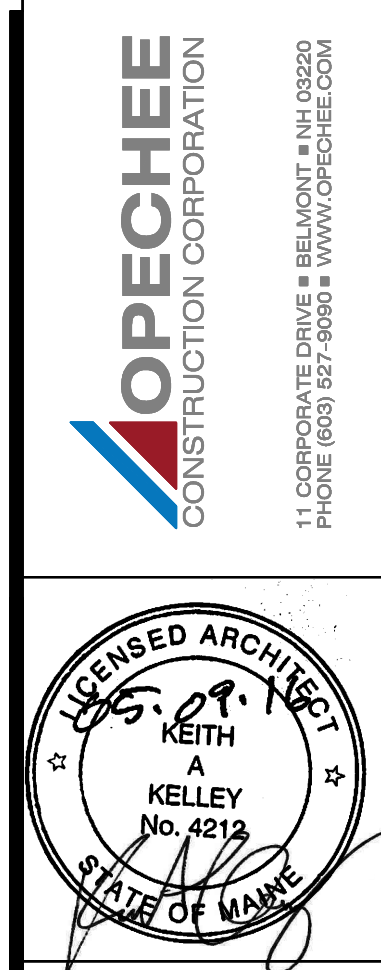


WINDOW & STOREFRONT ELEVATION TYPES
1/4" = 1'-0"



WINDOW & STOREFRONT ELEVATION TYPES
1/4" = 1'-0"

NOTE: PROVIDE WINDOW FALL PREVENTION DEVICES THAT COMPLY WITH ASTM F 2090 TO ALL RESIDENTIAL WINDOWS



Mixed Use Development
York & High Street
Portland, Maine

ISSUED: 05-09-16 FOR BUILDING PERMIT

project architect: KAK
drawn by: JLG

WINDOW-DOOR DETAILS & ELEVATIONS
sheet number: **A6.01**