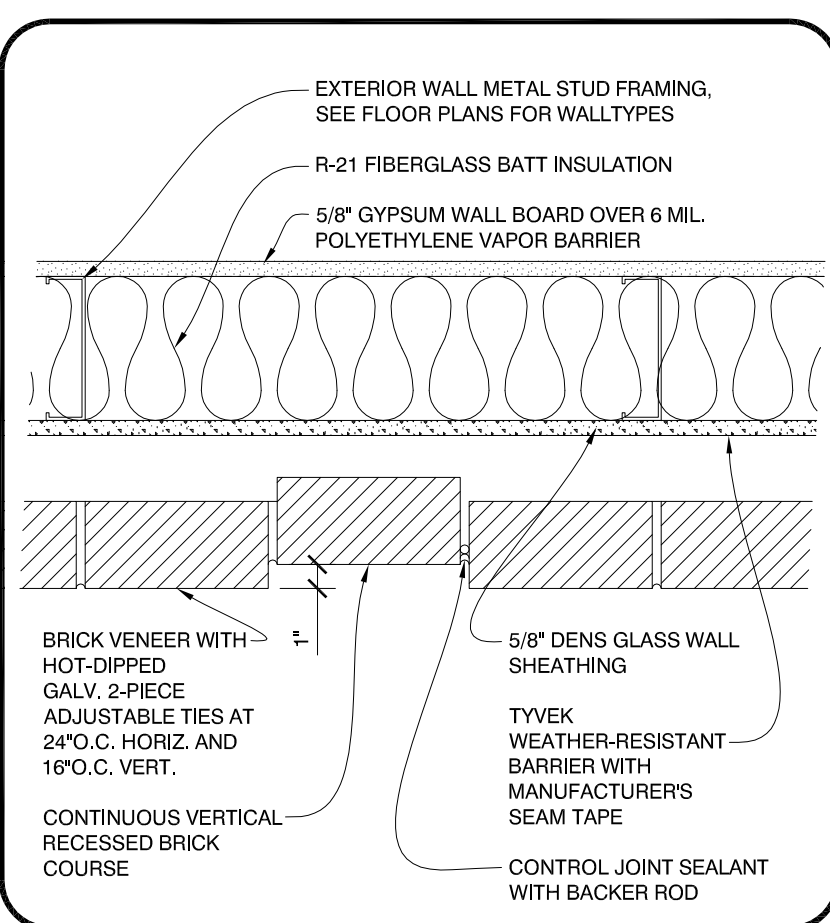
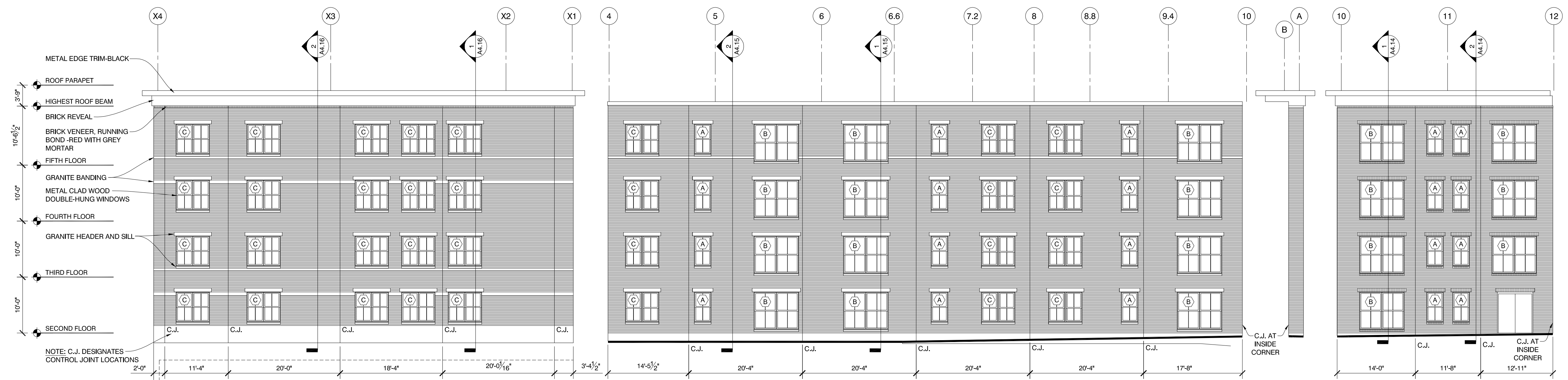


Monday, May 09, 2016 10:28:33 AM



N MASONRY PLAN DETAIL
1 1/2" = 1'-0"



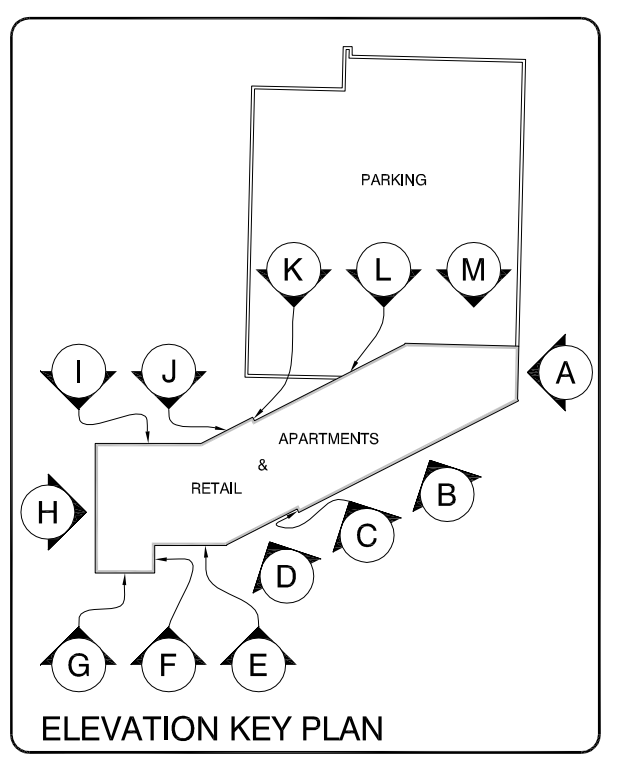
M PARKING DECK EXTERIOR ELEVATION 3/32" = 1'-0"
L PARKING DECK EXTERIOR ELEVATION 3/32" = 1'-0"
K PARKING DECK EXTERIOR ELEVATION 3/32" = 1'-0"
J PARKING DECK EXTERIOR ELEVATION 3/32" = 1'-0"



I HIGH STREET CORNER EXTERIOR ELEVATION 3/32" = 1'-0"
H HIGH STREET END EXTERIOR ELEVATION 3/32" = 1'-0"
G YORK STREET EXTERIOR ELEVATION 3/32" = 1'-0"
F YORK ST EXT. EL. 3/32" = 1'-0"
E YORK STREET EXTERIOR ELEVATION 3/32" = 1'-0"



D YORK STREET EXTERIOR ELEVATION 3/32" = 1'-0"
C YORK STREET EXTERIOR ELEVATION 3/32" = 1'-0"
B YORK STREET EXTERIOR ELEVATION 3/32" = 1'-0"
A SIDE YORK STREET EXTERIOR ELEV. 3/32" = 1'-0"



Mixed Use Development
York & High Street
Portland, Maine

REVISION:

ISSUED: 05-09-16 FOR BUILDING PERMIT

project architect: KAK
drawn by: JJD

UNFOLDED EXT. BLDG. ELEVATIONS

sheet number: **A3.02**