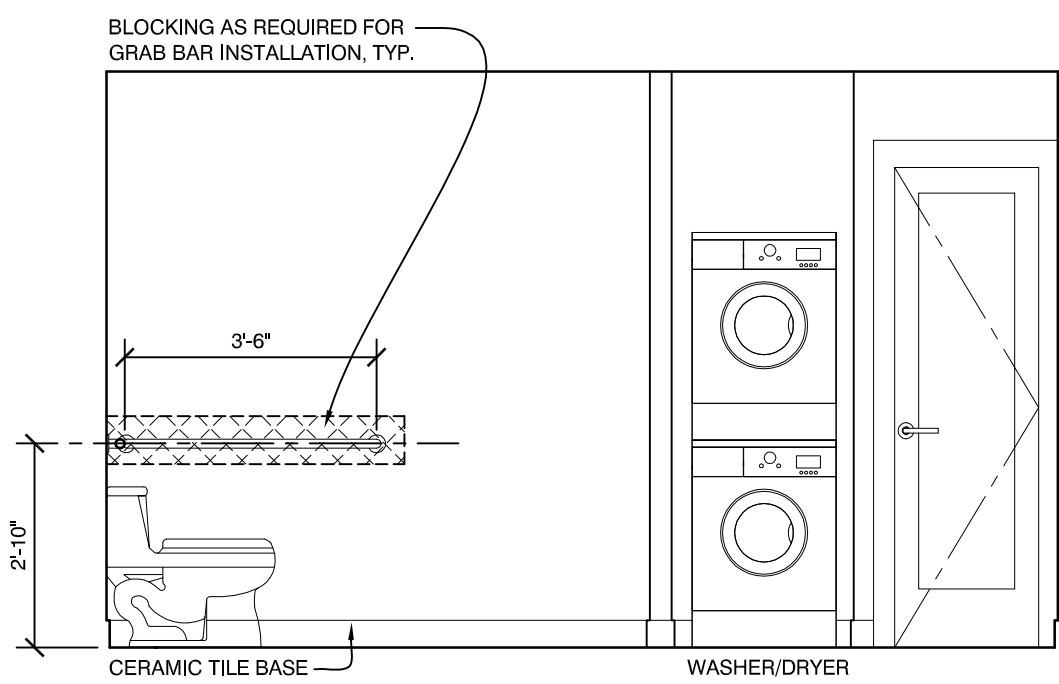


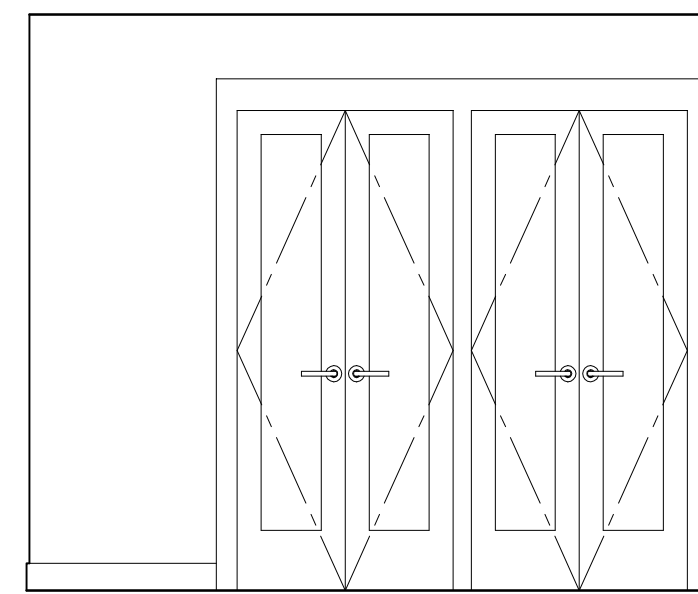
K ELEVATION - BATH
3/8" = 1'-0"

J ELEVATION - BATH
3/8" = 1'-0"

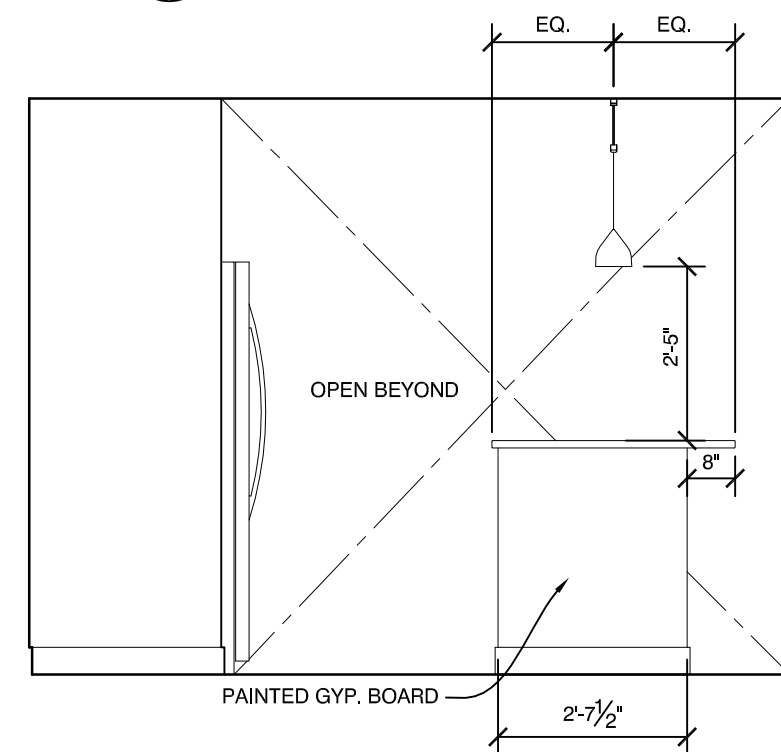
I ELEVATION - BATH
3/8" = 1'-0"



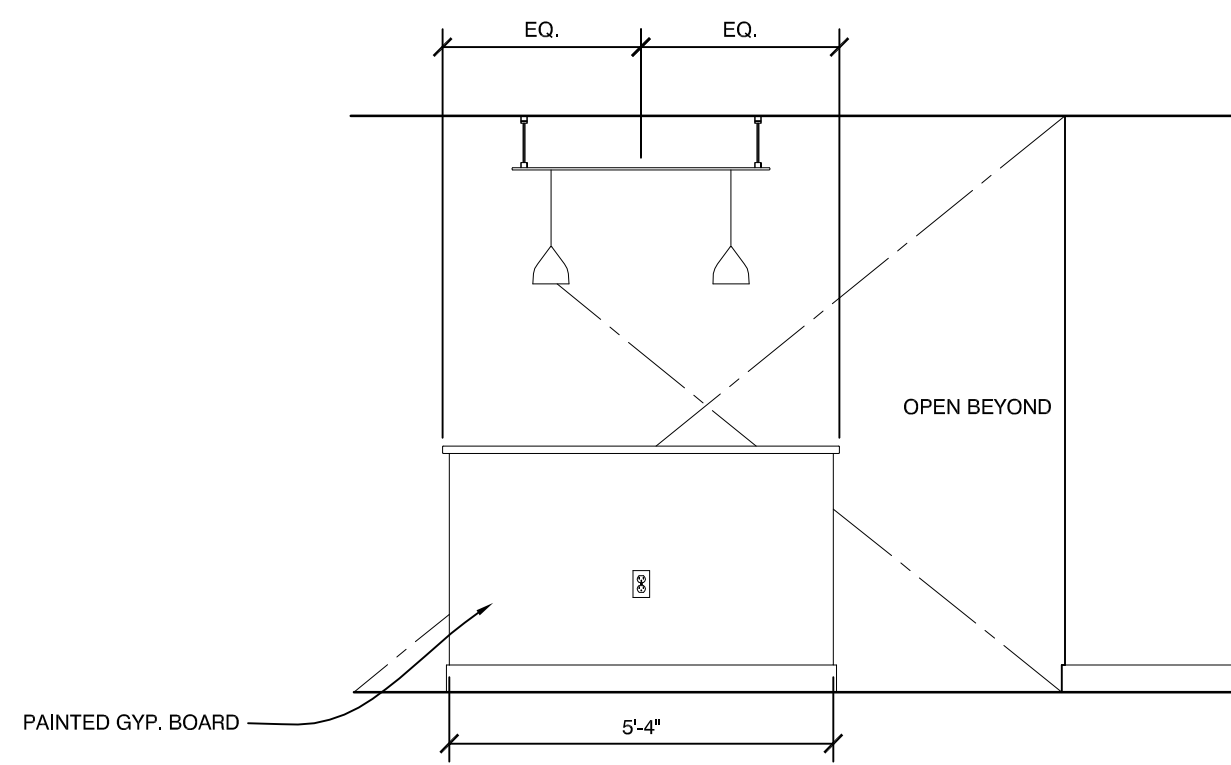
H ELEVATION - BATH
3/8" = 1'-0"



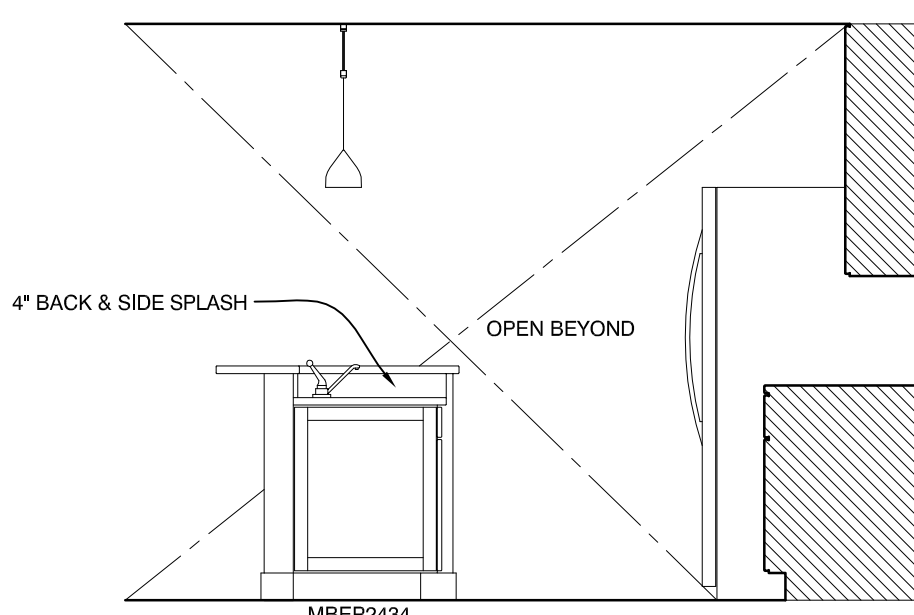
G ELEVATION - KITCHEN CLOSET
3/8" = 1'-0"



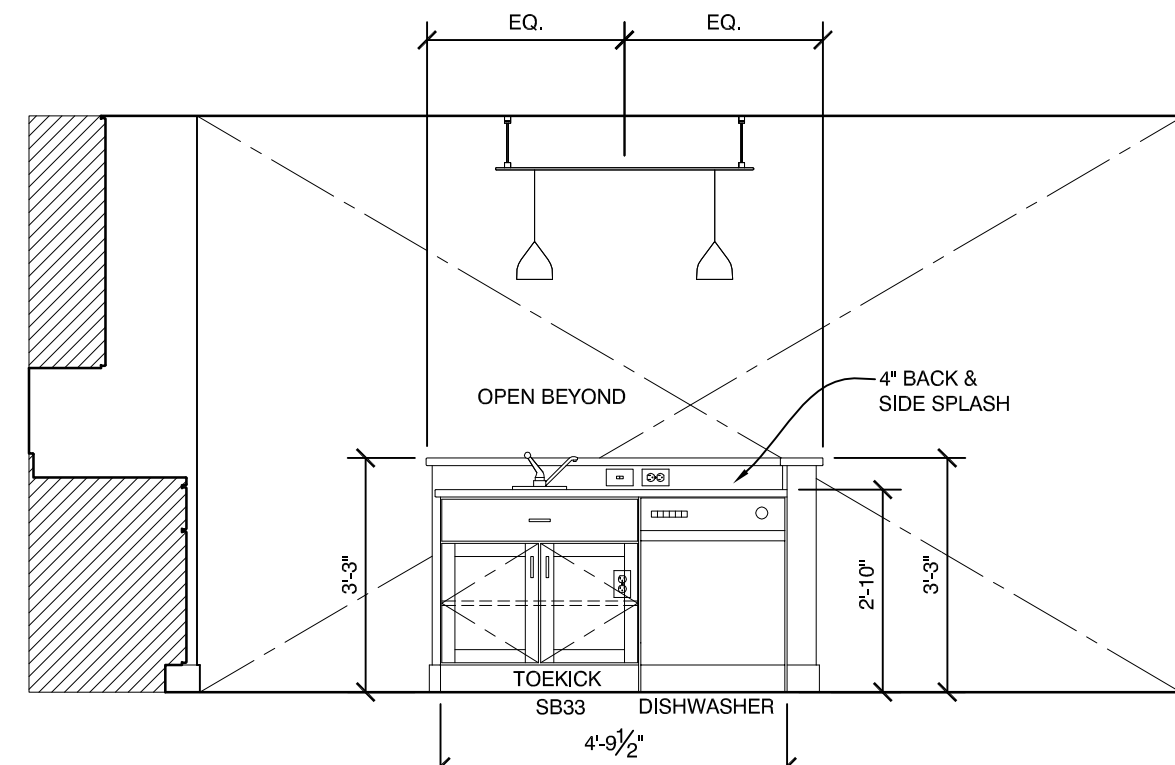
F ELEVATION - KITCHEN ISLAND
3/8" = 1'-0"



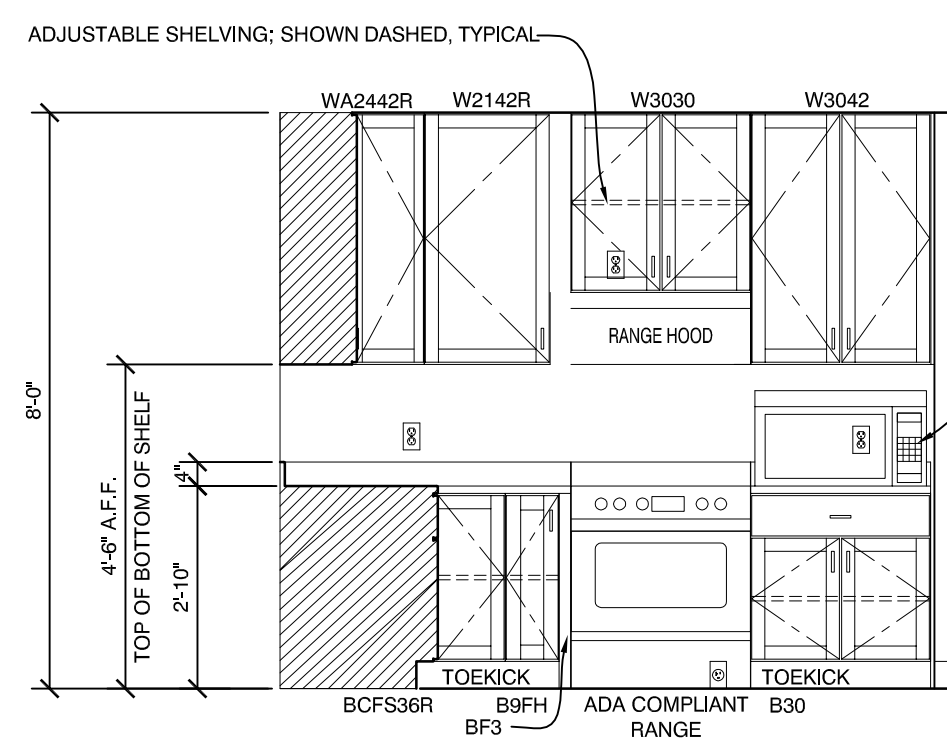
E ELEVATION - KITCHEN ISLAND
3/8" = 1'-0"



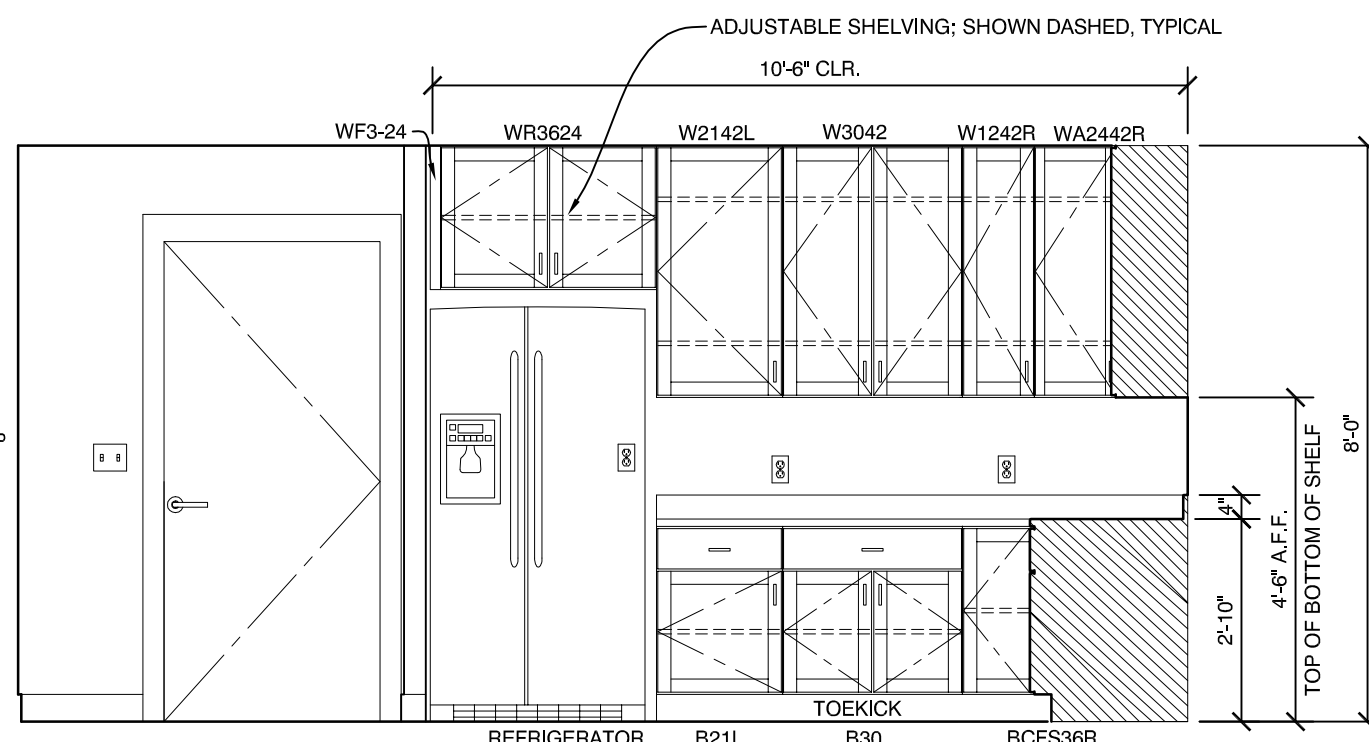
D ELEVATION - KITCHEN ISLAND
3/8" = 1'-0"



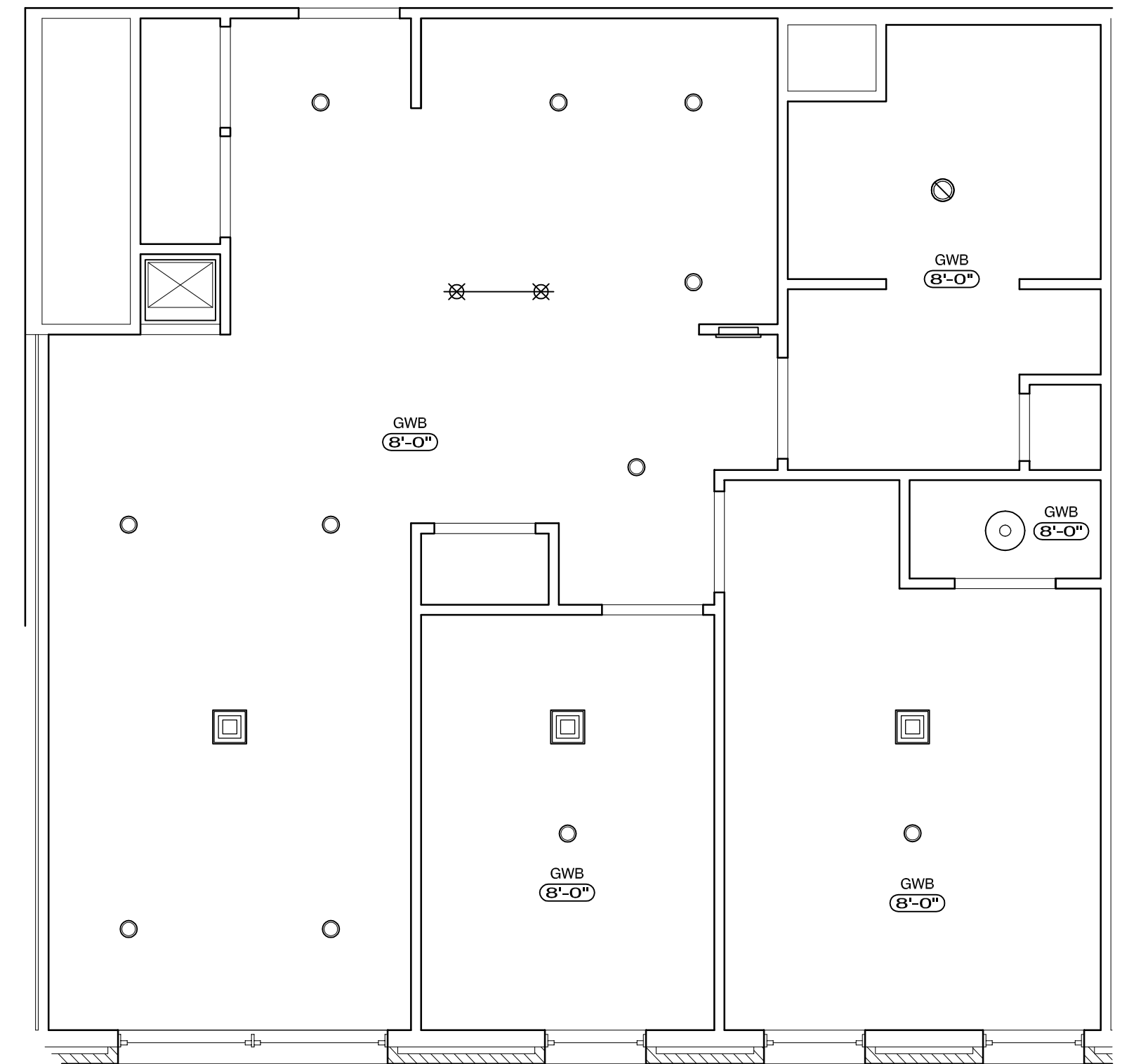
C ELEVATION - KITCHEN ISLAND
3/8" = 1'-0"



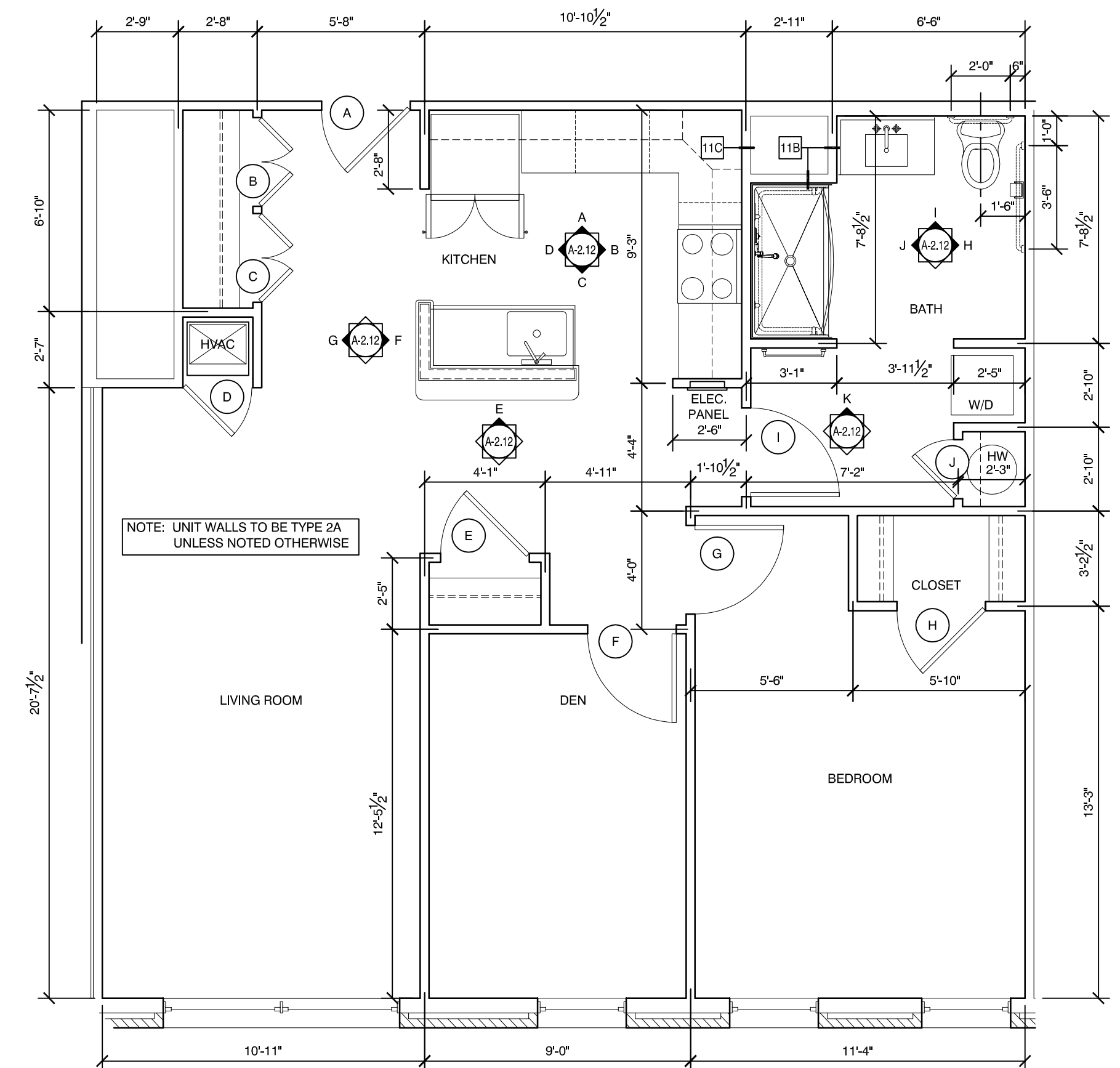
B ELEVATION - KITCHEN
3/8" = 1'-0"



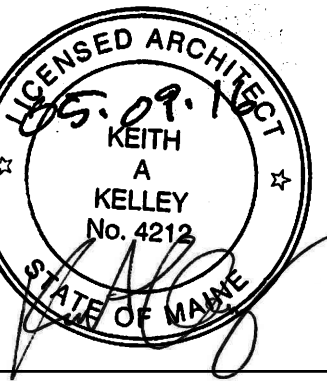
A ELEVATION - KITCHEN
3/8" = 1'-0"



2 REFLECTED CEILING PLAN
1/4" = 1'-0"



1 ARCHITECTURAL PLAN
1/4" = 1'-0"; UNIT 504



Mixed Use Development

York & High Street
Portland, Maine

REVISION:

ISSUED:
05-09-16 FOR BUILDING PERMIT

project architect: KAK
drawn by: JLG

UNIT PLAN
A4&

sheet number:

A2.12