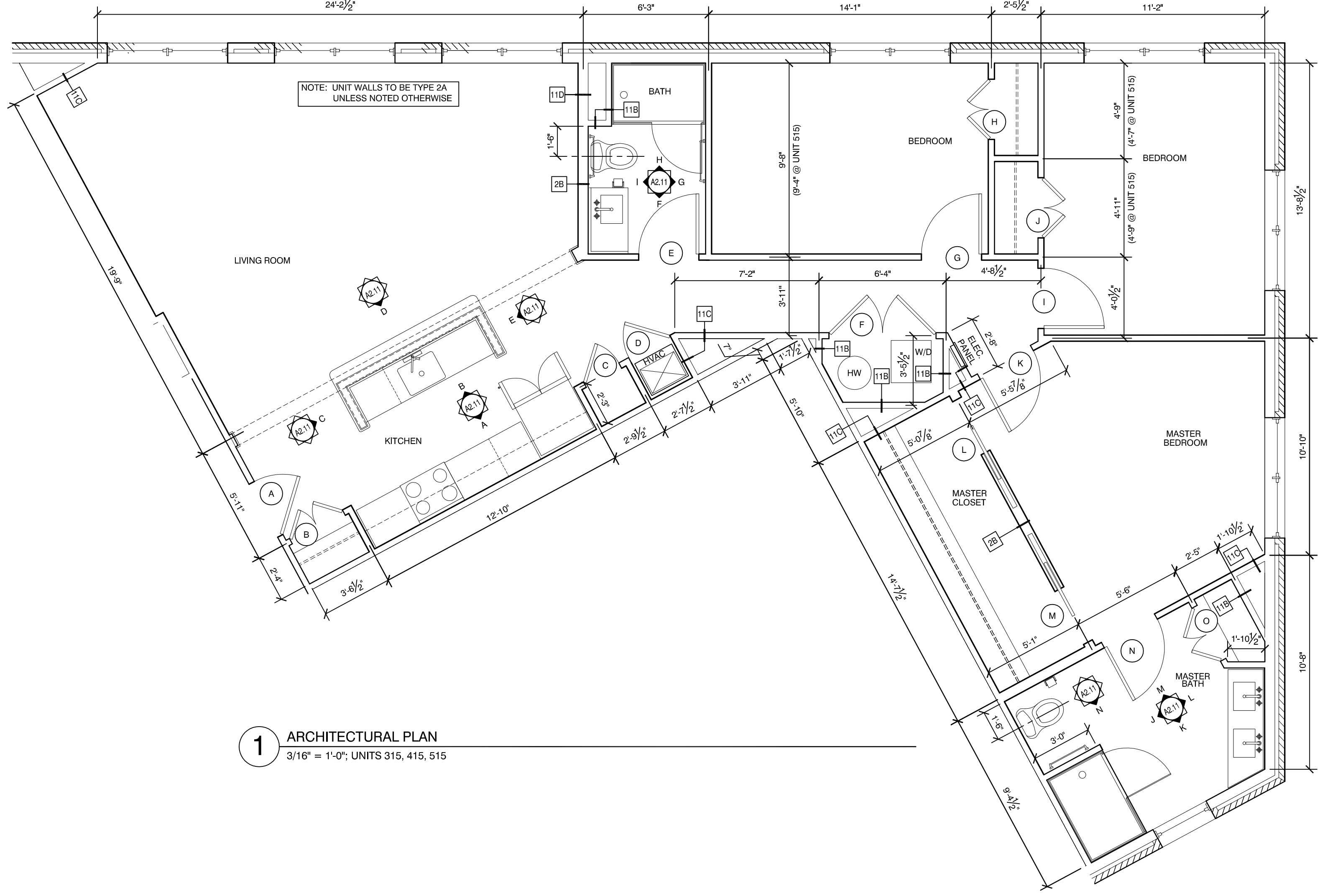
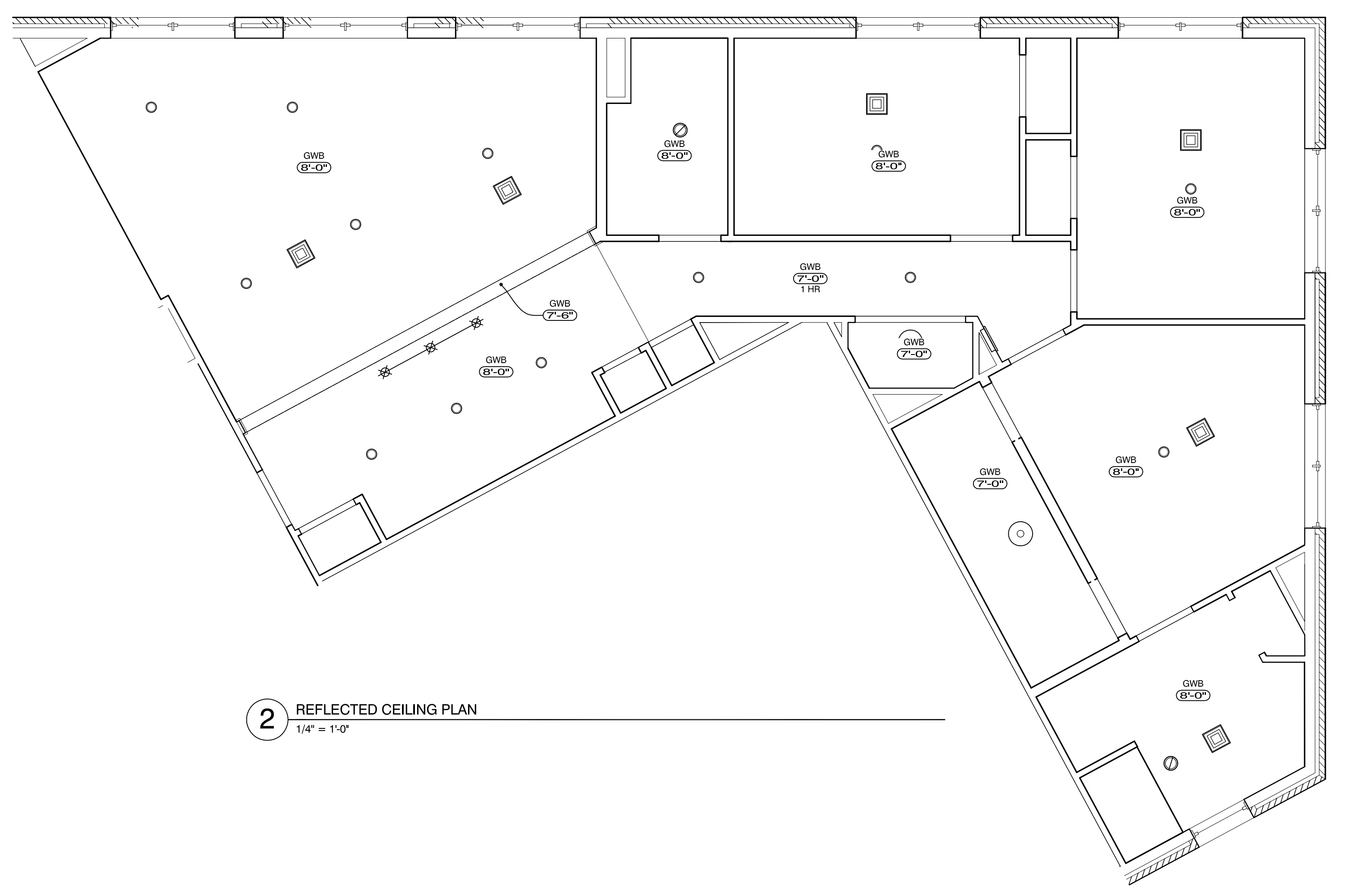
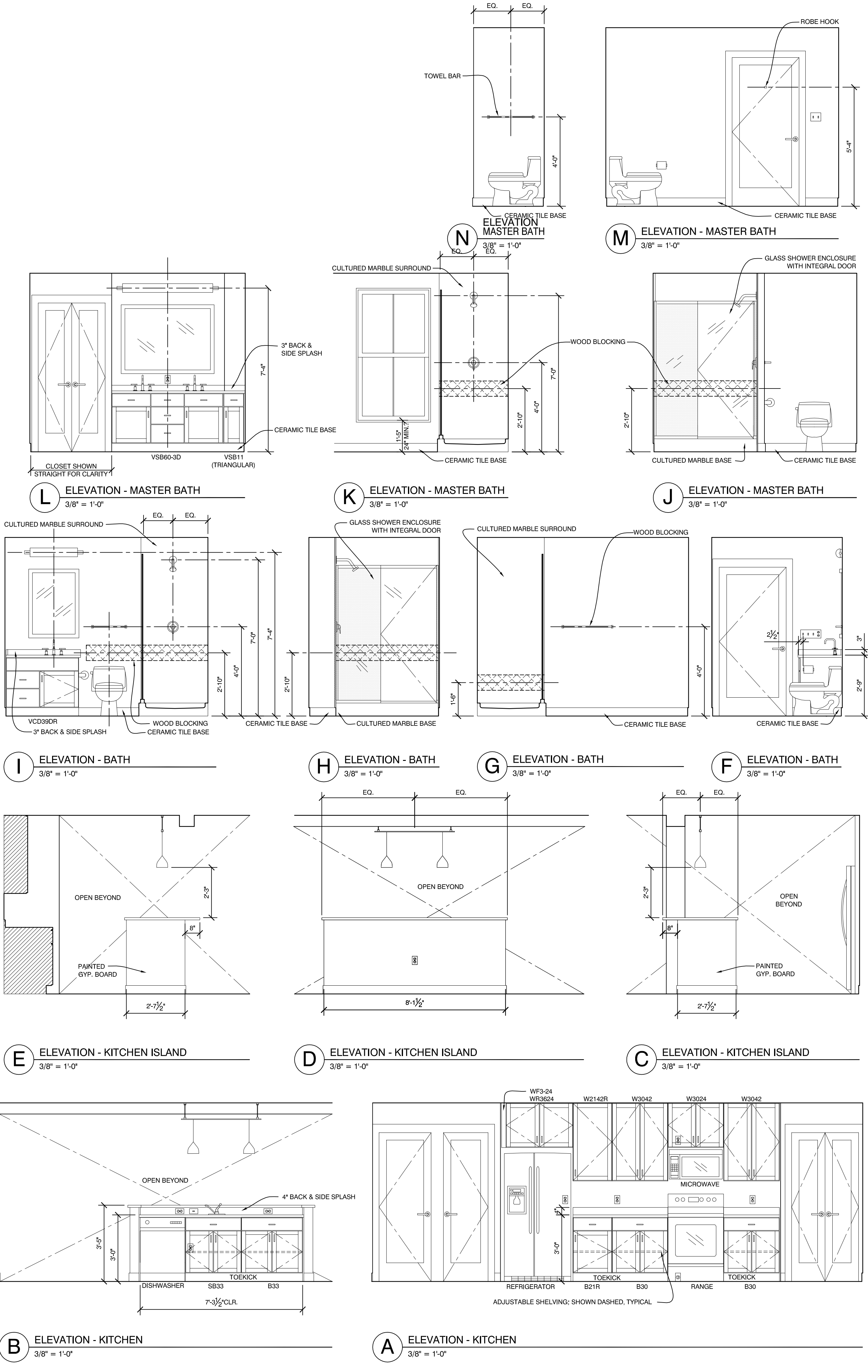


Monday, May 09, 2016 10:17:06 AM

© Copyright 2016 Opechee Construction Corporation



OPECHEE
CONSTRUCTION CORPORATION
11 CORPORATE DRIVE • BELMONT • N.H. 03220
PHONE (603) 927-8086 • WWW.OPECHEE.COM

LICENSED ARCHITECT
KEITH A KELLEY
No. 4212
STATE OF MAINE

Mixed Use Development
York & High Street
Portland, Maine

REVISION:

ISSUED:
05-09-16 FOR BUILDING PERMIT

project architect: KAK
drawn by: JLG

UNIT PLAN
C1
sheet number:
A2.11