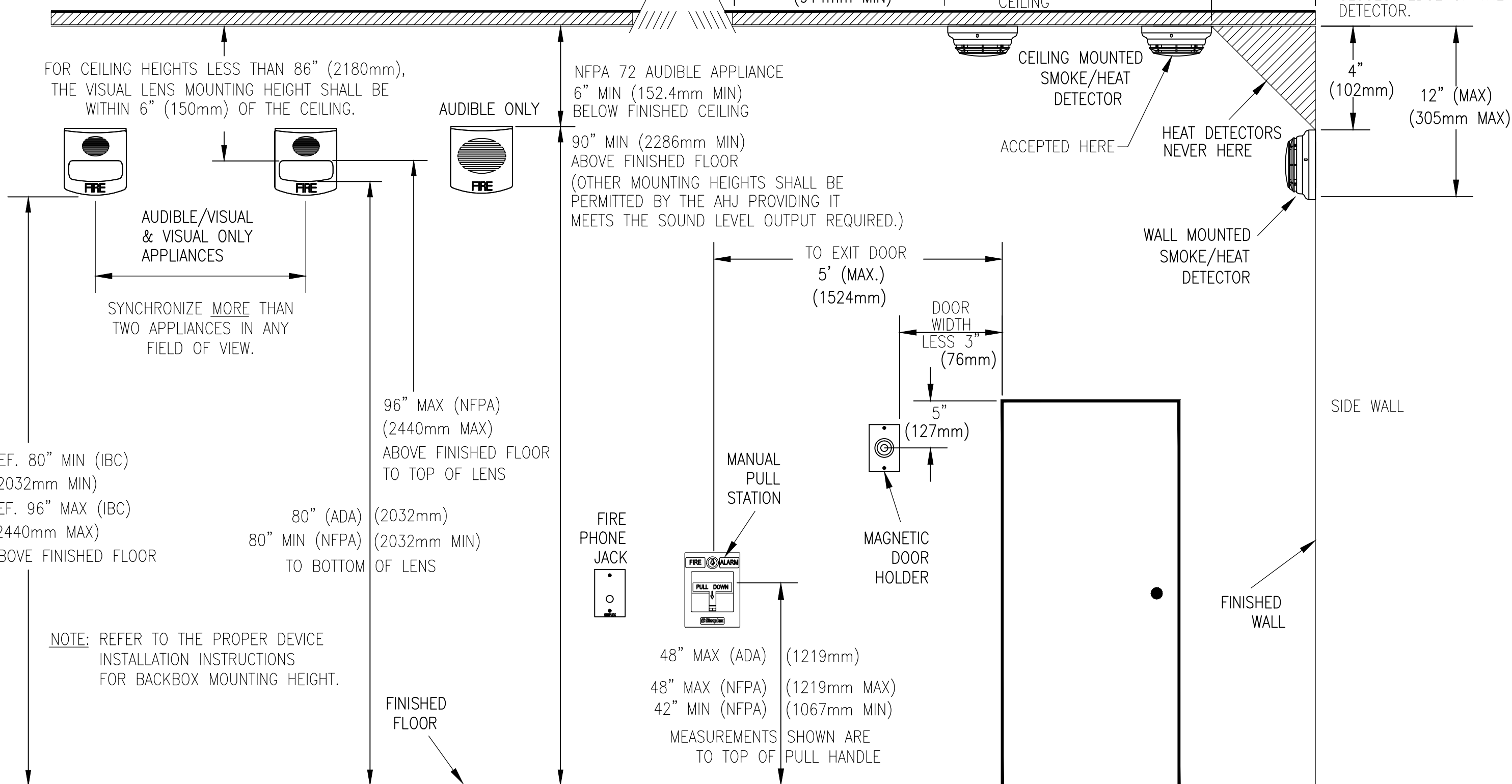


DEVICE MOUNTING HEIGHT REFERENCE (PER NFPA 72)

- VISUAL APPLIANCE MOUNTING HEIGHT CONSIDERATIONS IN SLEEPING ROOMS**
- MIN DISTANCE IN SLEEPING ROOMS IS 24" (610mm) FROM CEILING TO TOP OF LENS FOR 110CD STROBES WITHIN 16' OF THE PILLOW
 - 177CD STROBES, USED IN SLEEPING ROOMS, CAN BE WITHIN THE 24" (610mm) MINIMUM DISTANCE FROM THE CEILING. THE HIGHER INTENSITY IS TO COMPENSATE FOR A POSSIBLE SMOKE LAYER.



4010 BACKBOX INSTALLATION

DESCRIPTION

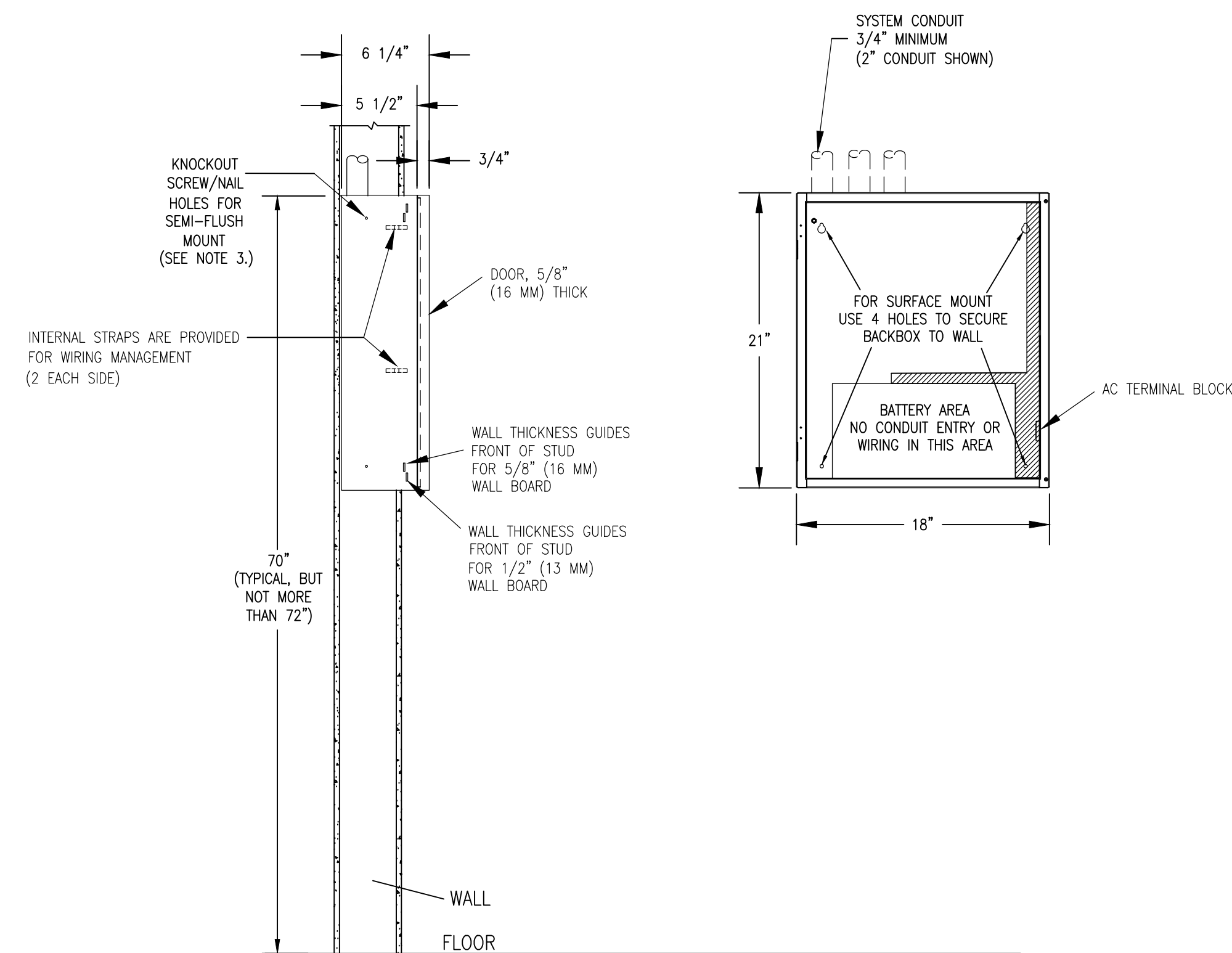
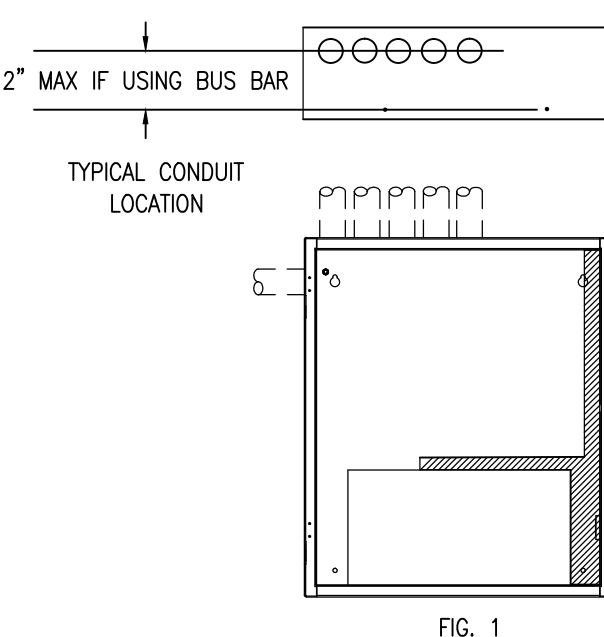
THE BACKBOX CAN BE SURFACE OR SEMI-FLUSH MOUNTED TO THE WALL. USE SEPARATE CONDUIT ENTRANCES FOR POWER-LIMITED AND NON-POWER LIMITED WIRING.

AC SUPPLY, BATTERY SUPPLY AND CITY CONNECT WIRING ARE ALL NON-POWER LIMITED WIRING.

DIMENSIONS SHOWN ARE TYPICAL FOR ALL SURFACE AND SEMI-FLUSH INSTALLATIONS.

INSTRUCTIONS

- REMOVE ELECTRONICS AND STORE IT IN A SAFE DRY AREA.
- NO KNOCKOUTS PROVIDED. CUT CONDUIT/SERVICE ENTRANCE OPENINGS. REFER TO FIG.1 FOR PROPER LOCATIONS. CONDUIT PROTRUSION INTO BOX 1/2" MAX.
- MOUNT BOX TO WALL: BOX MUST BE LEVEL AND PLUMB. FOR SURFACE MOUNT USE TEAR DROP AND CLEARANCE HOLES ON BACK SURFACE. FOR SEMI-FLUSH MOUNT: USE KNOCKOUTS ON SIDE WALL AND SCREW OR NAIL BOX TO WALL STUDS.
- NEMA RATING: NEMA 1 - GENERAL PURPOSE.
- IF PRESENT, USE WIRE MANAGEMENT BRACKETS ON BOX SIDES TO SECURE WIRE RUNS.
- DO NOT LOCATE POWER-LIMITED WIRING IN THE SHADED AREAS OF THE BACKBOX, THIS AREA IS RESERVED FOR NON-POWER LIMITED CIRCUITRY SUCH AS AC POWER, BATTERIES AND CITY CONNECTION.



PRODUCT INFORMATION

FEATURES:

- UL LISTED
- FM APPROVED
- FLUSH MOUNT ON STANDARD ELECTRICAL BOXES
- MASONRY - 6 GANG RACO #965, 3 1/2" DEEP
- SINGLE GANG - 6 SINGLE GANG BOXES 3 1/2" DEEP (RACO #590 OR EQUAL)

SPECIFICATIONS:

- VOLTAGE: 24VDC NOMINAL
- CURRENT: ALARM 140mA
- SUPERVISORY 65mA
- OPERATING TEMPERATURE: 32° F TO 120° F (0° TO 49° C)
- HUMIDITY RANGE: UP TO 92% RH NON-CONDENSING @ 100° F (38° C)
- STANDARD TRIM: BEIGE (SUPPLIED WITH BOTH SLOTTED AND TAMPERPROOF SCREWS)
- TRIM DIMENSIONS 11 13/16" L X 4 1/2" W (300mm L X 114mm W)
- ASSEMBLY DEPTH: 1 5/16" (33mm), 1 1/2" Ø TERMINAL BLOCK (38mm)

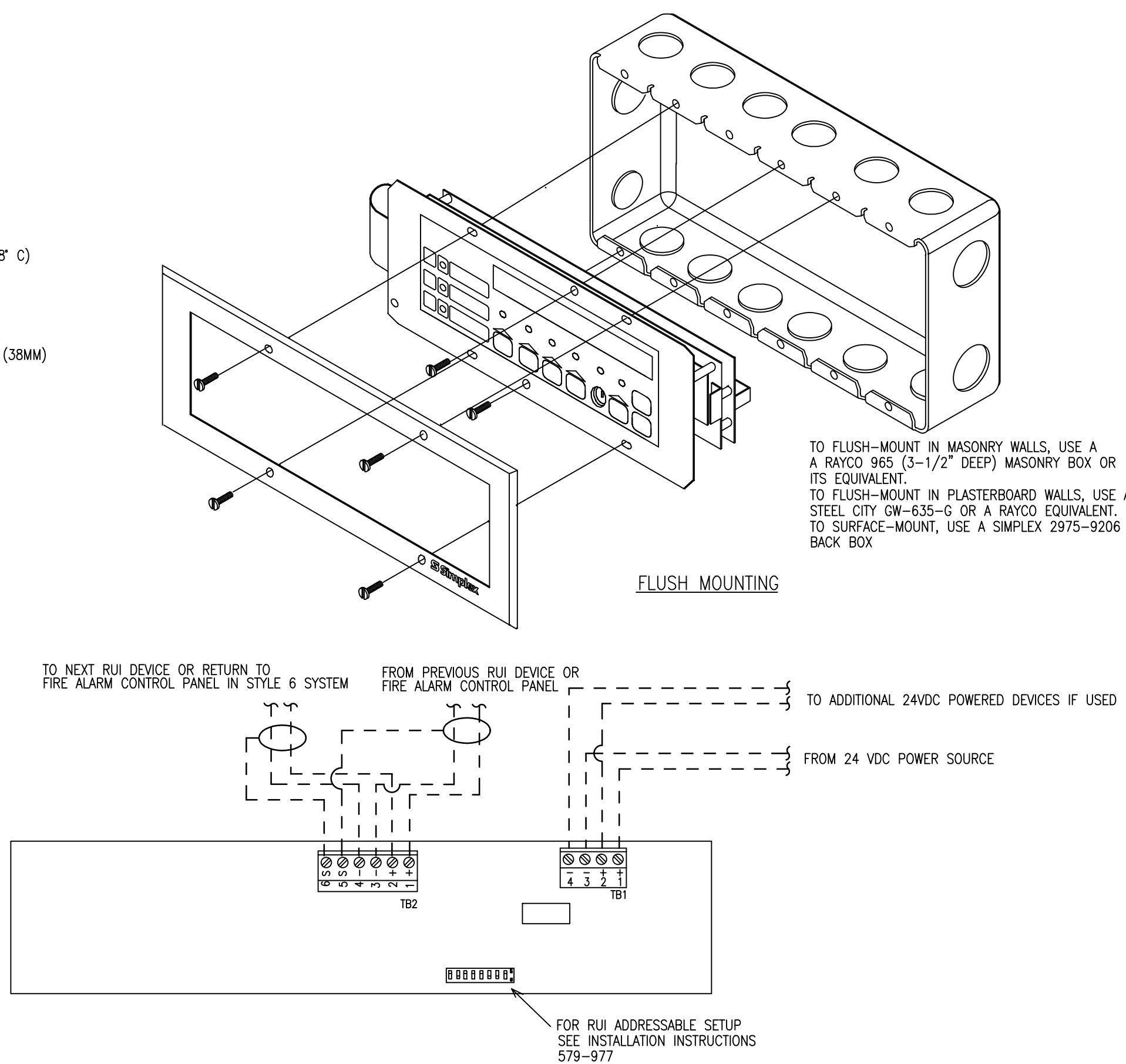
OPTIONS

- BRUSHED ALUMINUM TRIM: 4603-9111
- SURFACE BOX: 2975-9206

NOTES:

- ALL WIRING TO BE NO. 18 AWG OR TO LOCAL CODE.
- ALL WIRING SUPERSEDED
- WIRE TO BE 18 AWG TWISTED SHIELDED PAIR PROVIDED CONSULT SALES ENGINEERING FOR EXCEPTIONS. 2500 FT ONE WAY MAX COMMUNICATION LINE POWER 32 VDC MAX 140 MA MAX 1200 OR 9600 BAUD
- WHEN WIRING LEAVES THE BUILDING, OVER VOLTAGE PROTECTORS ARE REQUIRED: USE 2081-9044 ONE IS INSTALLED WHERE IT LEAVES THE BUILDING AND ONE WHERE IT ENTERS THE NEXT BUILDING. TWO 2081-9044 (MAX)

4606-9102 REMOTE ANNUNCIATOR



4099-9001 SINGLE ACTION IDNET ADDRESSABLE STATION

PRODUCT INFORMATION

FEATURES:

- UL LISTED
- SINGLE ACTION, IDNET ADDRESSABLE
- PULL LEVEL PROTRUDES WHEN ALARMED
- TAMPER RESISTANT RESET KEY LOCK
- MOUNTING: SEMI-FLUSH, SURFACE
- OPERATING TEMPERATURE RANGE: 32 - 120° F
- OPERATING HUMIDITY RANGE: 0 - 93% RH
- ADAPTER PLATES 2099-9813 OR 2099-9814 CAN BE USE FOR RETROFIT APPLICATIONS.
- 5" HIGH X 3 3/4" WIDE X 1" DEEP
- SCREW TERMINALS FOR 18 TO 14 AWG WIRE
- ADDRESSED BY MEANS OF AN 8 POSITION DIP SWITCH
- COMPATIBLE WITH IDNET/MANPET

OPERATION:

- ACTIVATION:**
4099-9001 SINGLE ACTION STATION REQUIRES A FIRM DOWNWARD PULL TO ACTIVATE THE ALARM SWITCH. COMPLETING THIS ACTION BREAKS AN INTERNAL PLASTIC BREAK-ROD THAT IS VISIBLE BELOW THE PULL LEVER (USE OF PLASTIC ROD IS OPTIONAL). THE PULL LEVEL LATCHES INTO THE ALARM POSITION AND REMAINS EXTENDED OUT OF THE HOUSING TO PROVIDE A VISIBLE INDICATION.
- RESETTING:**
4099-9001 SINGLE ACTION STATION REQUIRES A KEY TO RESET THE ACTIVATION LEVER AND DEACTIVATE THE ALARM SWITCH. (IF OPTIONAL PLASTIC BREAK ROD WAS USED IT MUST BE REPLACED)

CONSTRUCTION:

- STATION HOUSING AND PULL LEVER ARE CONSTRUCTED OF CHIP RESISTANT AND DIRT RESISTANT, HIGH IMPACT LEXAN.
- HOUSING IS RED WITH RAISED WHITE LETTERING AND PULL LEVER IS WHITE WITH RED RAISED LETTERING.
- LEXAN IS A REGISTERED TRADEMARK OF THE GENERAL ELECTRIC CO.

APPLICATION:

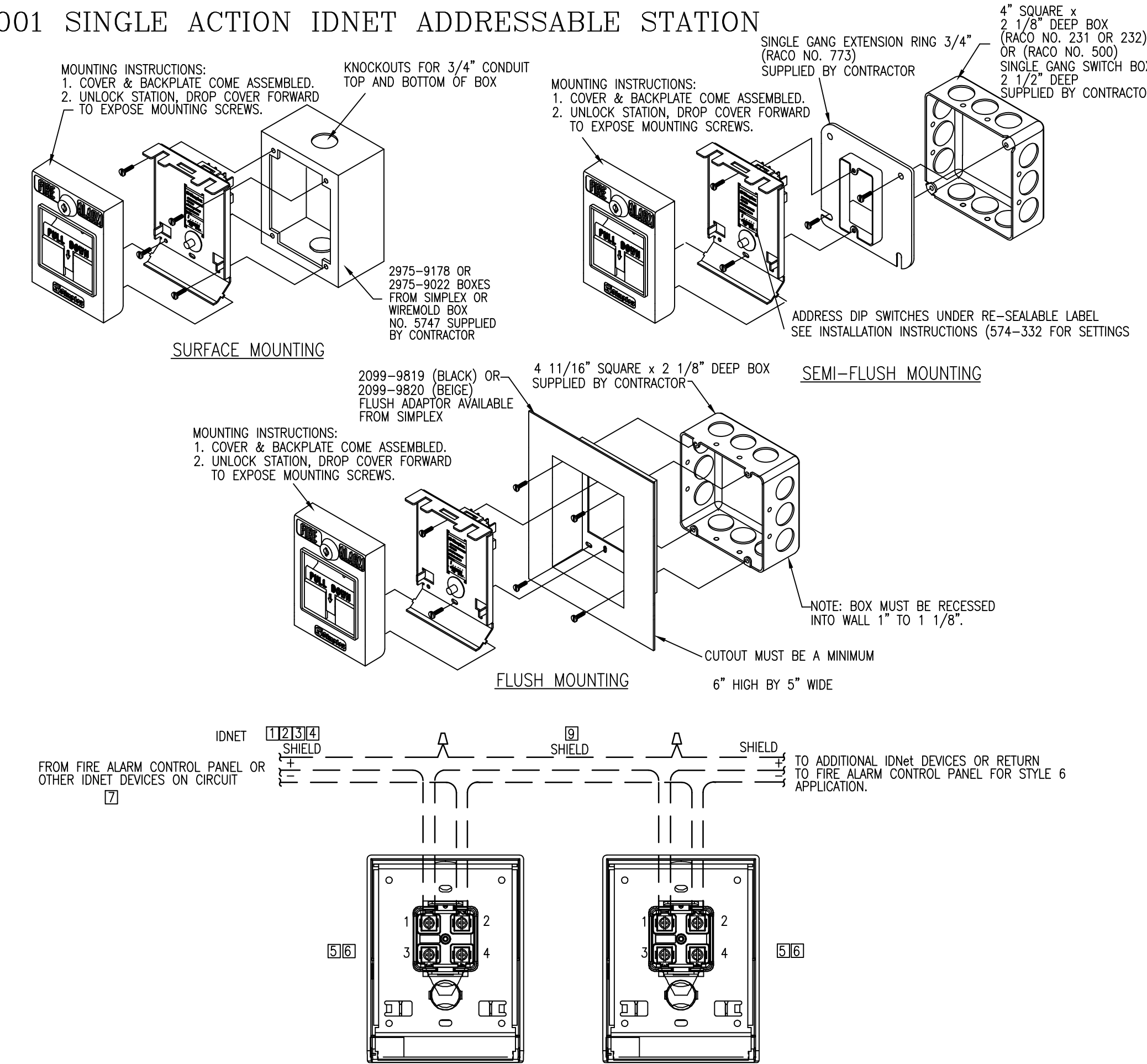
- FULL STATIONS SHALL BE INSTALLED IN ACCORDANCE WITH NFPA 72 AND ADA GUIDE LINES.

INTRODUCTION:

THE 4099-9001 ADDRESSABLE PULL STATION PROVIDES TWO-STATE STATUS INFORMATION (NORMAL AND SHORT) TO THE IDNET COMPATIBLE FIRE ALARM CONTROL PANEL (FACP) VIA THE IDNET CHANNEL. THE IDNET CHANNEL PROVIDES THE COMMUNICATION LINK BETWEEN PULL STATION AND THE FACP AND POWERS THE ENTIRE CIRCUITRY.

WIRING:

- ALL WIRING TO COMPLY WITH LOCAL CODE.
- CONDUCTORS MUST TEST FREE OF ALL GROUNDS.
- MAINTAIN CORRECT POLARITY
- IDNET LINES ARE TO BE 18 AWG TWISTED SHIELDED PAIR
- MAXIMUM LINE RUN FROM PANEL TO FARTHEST DEVICE NOT TO EXCEED 2500 FEET.
- MAXIMUM TOTAL WIRE (INCLUDING ALL T-TAPS) FROM PANEL NOT TO EXCEED 10,000 FEET.
- MAXIMUM QUANTITY OF DEVICES PER CIRCUIT: 250
- TERMINALS 1 AND 2 FOR FIELD WIRING. TERMINALS 3 AND 4 ARE FACTORY WIRING.
- WIRE NUT, SPLICE, OR SOLDER THE SHIELD WIRES.
- IF SHIELD IS PRESENT, IT SHOULD BE CONNECTED TO THE OUTGOING IDNET SHIELD TO PROVIDE A CONTINUOUS SHIELD OVER THE LENGTH OF THE IDNET CHANNEL. SHIELD SHOULD BE INSULATED FROM THE ELECTRICAL BOX.
- SEE INSTALLATION INSTRUCTIONS 574-332



SimplexGrinnell BE SAFE.

A Tyco International Company

20 THOMAS DRIVE
WESTBROOK, ME 04092
207-846-6440
SALES: 207-846-6440
FAX: 207-846-6439

© 2012 SIMPLEXGRINNELL LP
ALL RIGHTS RESERVED

CHG BY		REVISION DESCRIPTION	
NO.	3/28/12	REVISED PER FIRE DEPARTMENT REVIEW COMMENTS DATED 3/20/13	
DATE			

FIRE ALARM & SMOKE DETECTION SYSTEM
DEVICE WIRING DETAILS
DANFORTH ON HIGH

81 DANFORTH STREET
PORTLAND, ME 04101

DRAWN BY: M.DESIATA
DATE: 10/10/12

CHECKED BY: S.KALAFARSKI
DATE: 10/19/12

PROJECT NUMBER: 966796101

SHEET TITLE: FIRE ALARM/SMOKE SYSTEM DEVICE WIRING DETAILS

SHEET NUMBER: FA-701

FILE PATH: P:\2012\147\Danforth On High\REV1\Fire Alarm Drawings\FA-701.dwg

LAST PRINTED: 5/29/2013 10:15:05 AM LAST SAVED BY: MDESIAATA