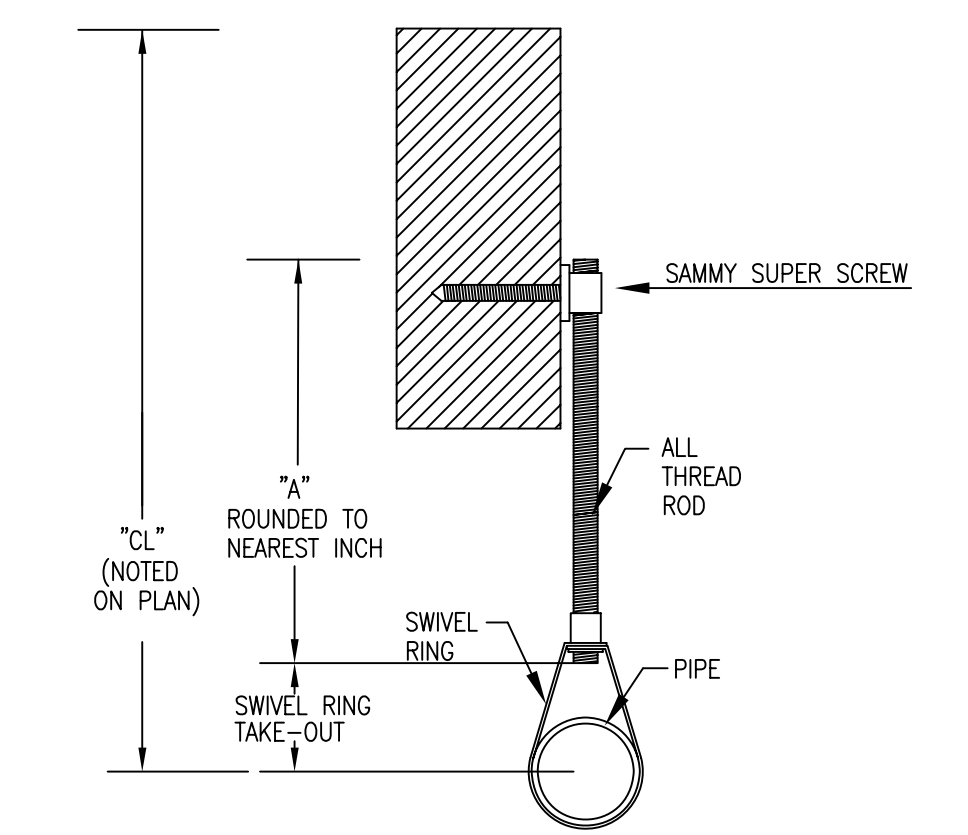
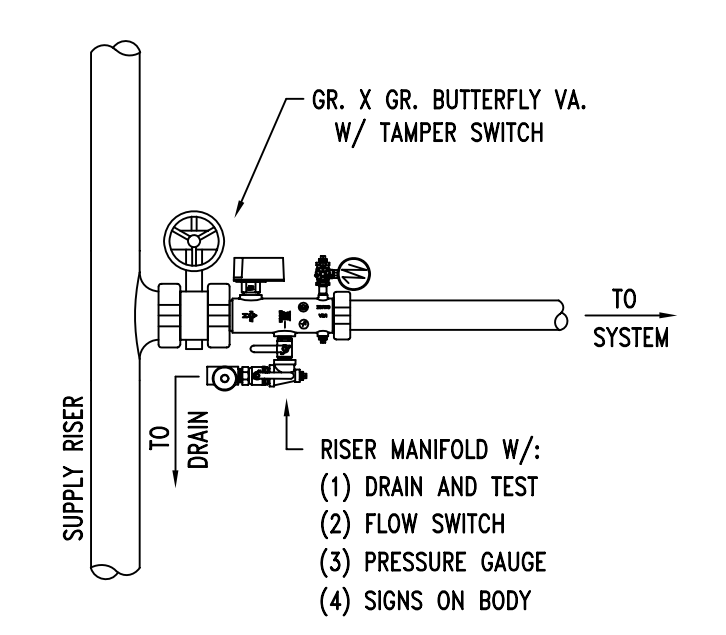


HYDRAULIC DESIGN DATA		
System # & Area	#1 - #2	
No. of Sprinklers	4	
Density	0.10 GPM	
Designed Area	R00M AREA	
Hose Allowance	100 GPM	
Water Flow Rate	168 GPM	
Residual Pressure at Base of Riser	71 PSI	
Safety Factor at Base of Riser	8.89 PSI	

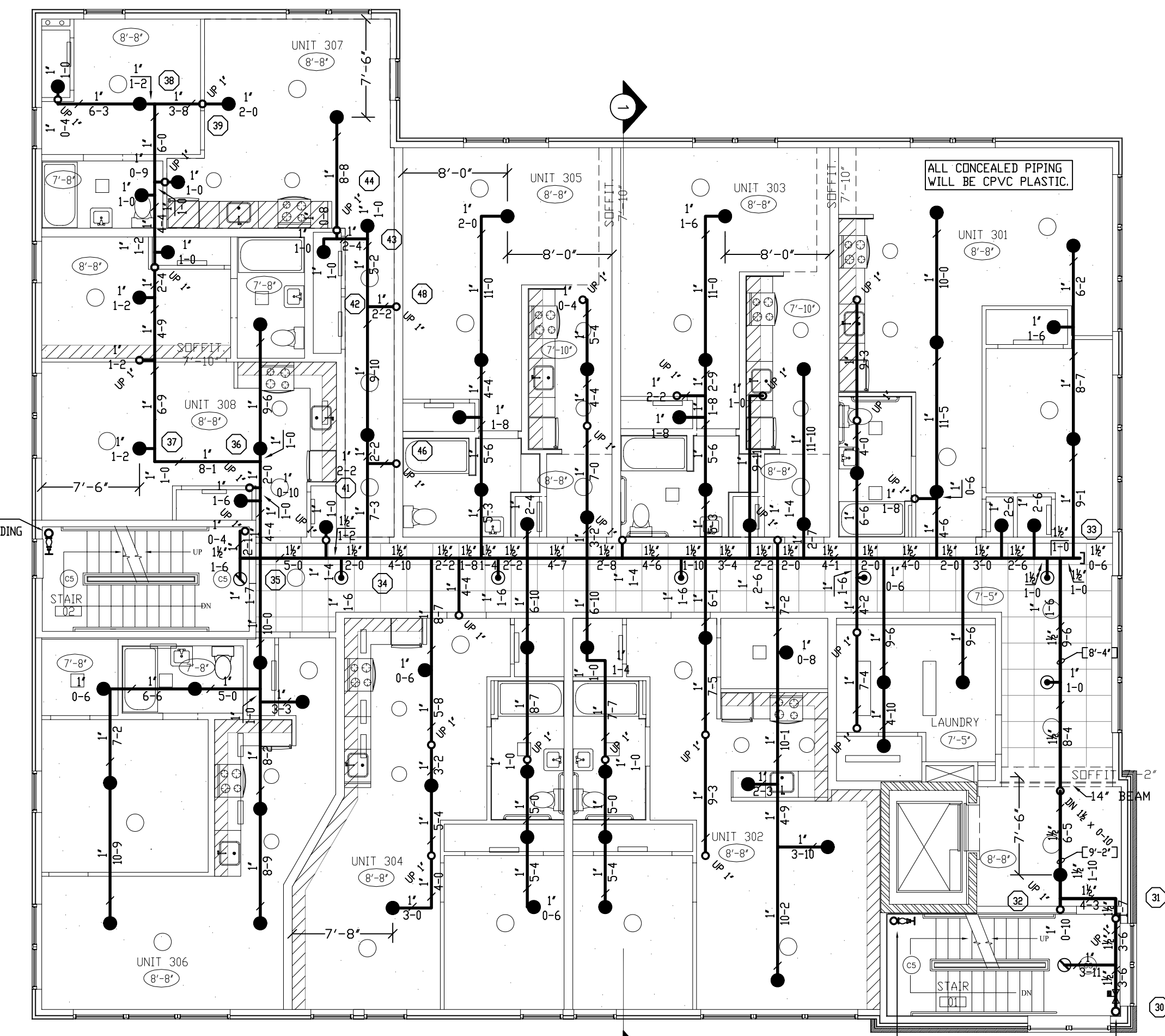
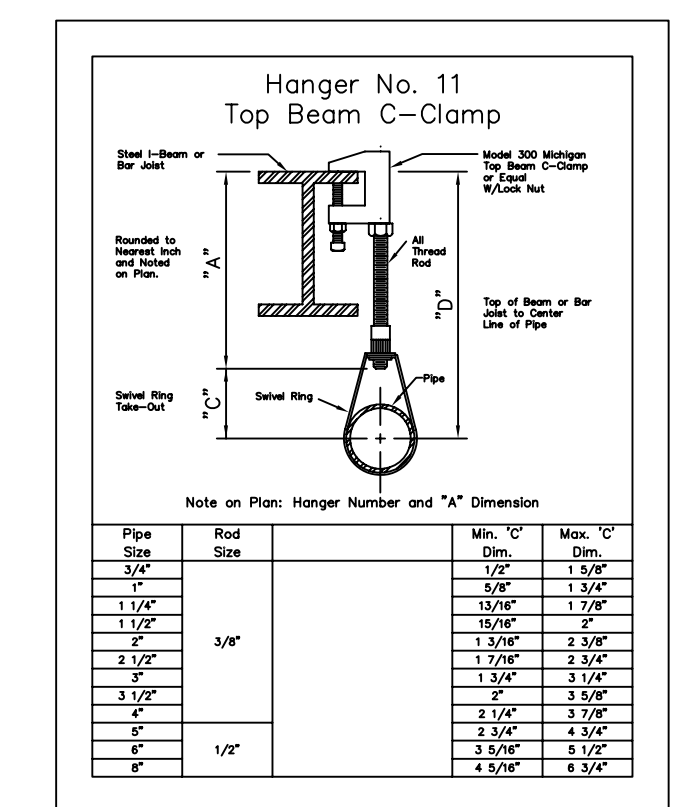


NOTE ON PLAN: "A" DIMENSION  
 PIPE SIZES 1" THROUGH 4" - ROD SIZE 3/8"  
 PIPE SIZES 5" THROUGH 8" - ROD SIZE 1/2"  
**TYPE #10 HANGER**  
 NO SCALE



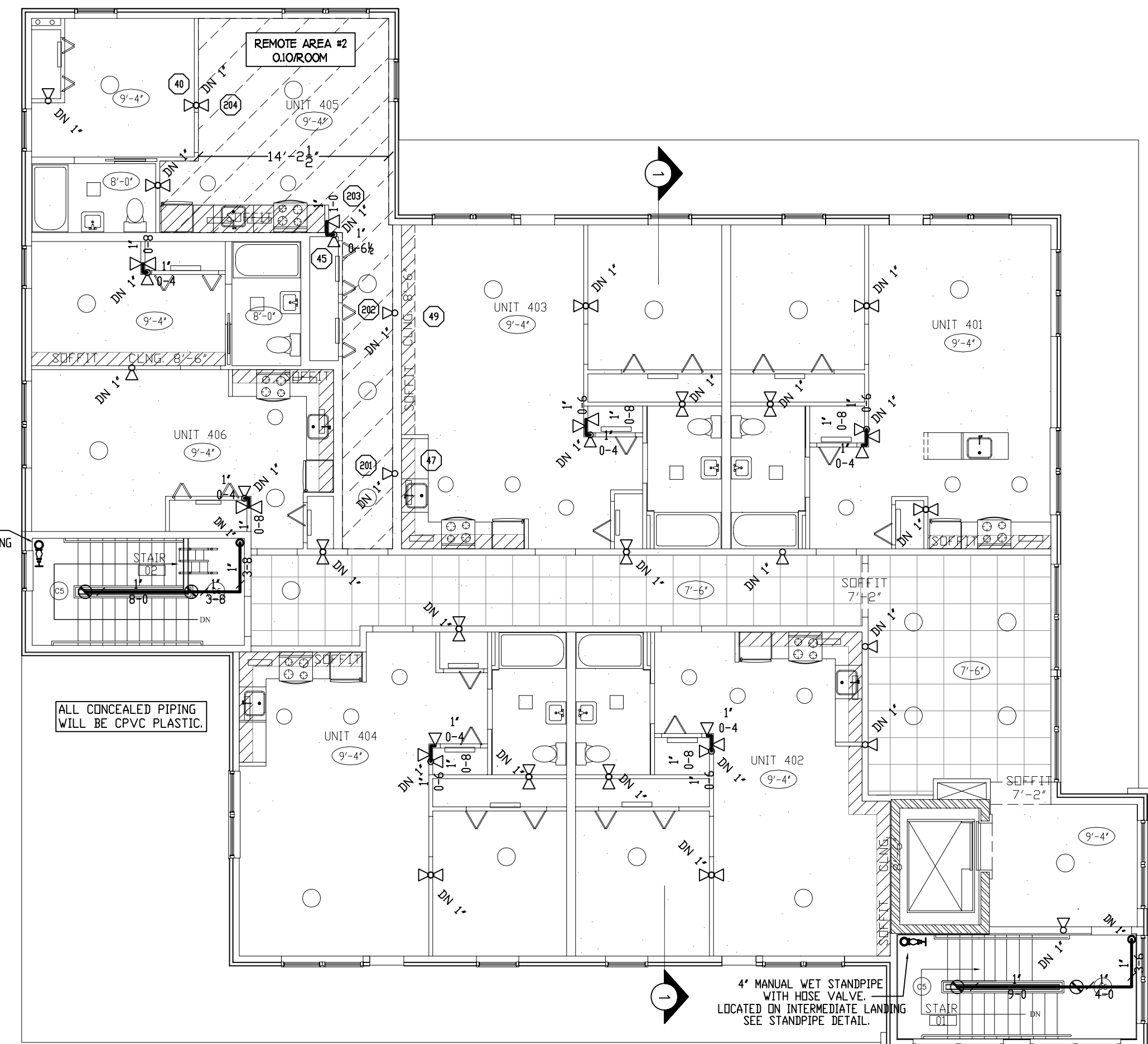
FLOOR CONTROL VALVE

HYDRAULIC DESIGN DATA		
System # & Area	#1 - #1	
No. of Sprinklers	4	
Density	0.10 GPM	
Designed Area	4 SPRINKS	
Hose Allowance	100 GPM	
Water Flow Rate	161 GPM	
Residual Pressure at Base of Riser	73 PSI	
Safety Factor at Base of Riser	7.08 PSI	



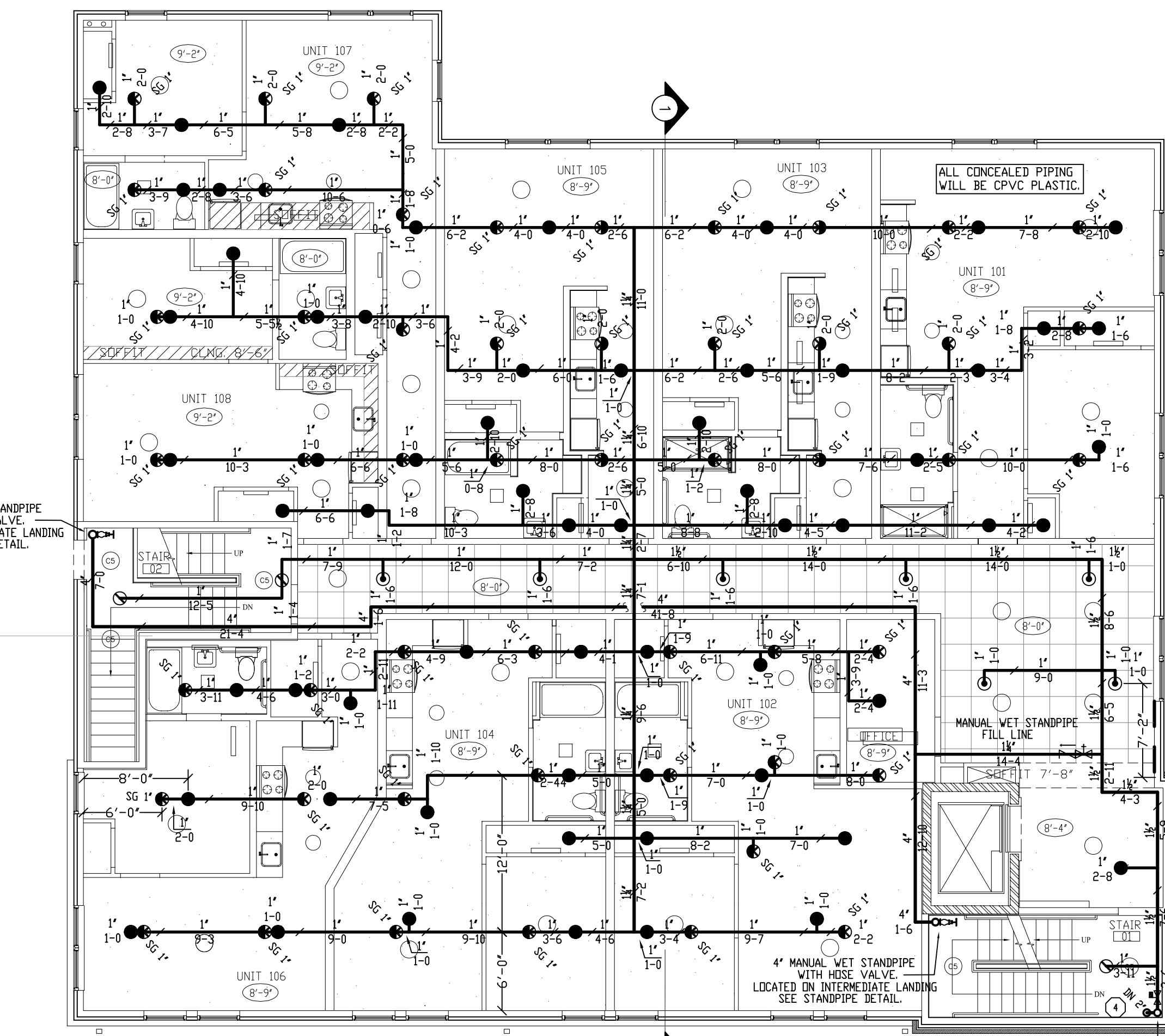
THIRD FLOOR FIRE PROTECTION

QUANTITY	⊙ = 6
QUANTITY	⊙ = 67
QUANTITY	⊙ = 2



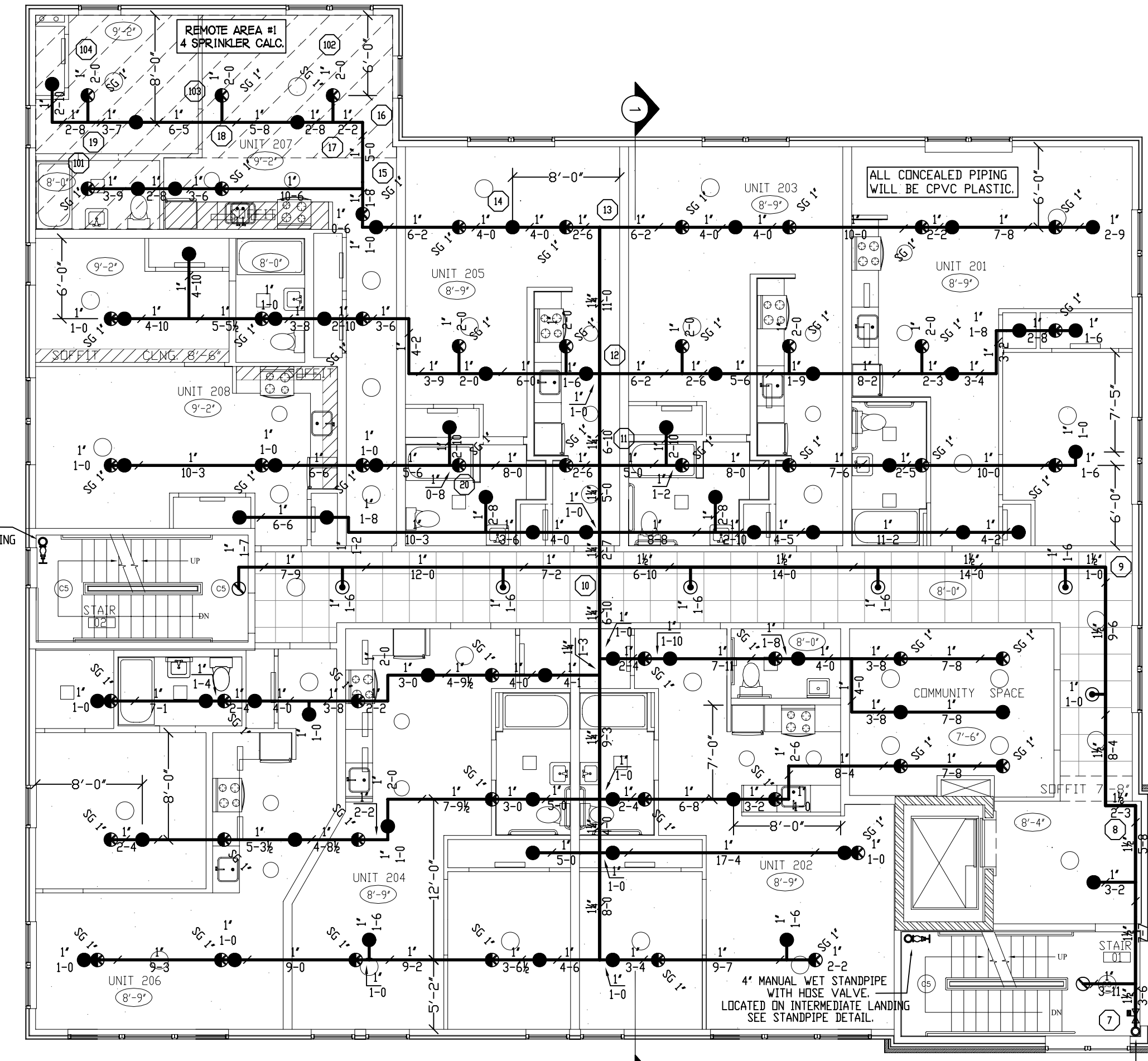
FOURTH FLOOR FIRE PROTECTION

QUANTITY	⊙ = 4
QUANTITY	⊙ = 55



FIRST FLOOR FIRE PROTECTION

QUANTITY	⊙ = 7
QUANTITY	⊙ = 62
QUANTITY	⊙ = 51
QUANTITY	⊙ = 3



SECOND FLOOR FIRE PROTECTION

QUANTITY	⊙ = 6
QUANTITY	⊙ = 65
QUANTITY	⊙ = 53
QUANTITY	⊙ = 2

REVISIONS	NOTES	SPRINKLER TYPE	IDENTIFICATION NO.	MFG.	ESC.	MODEL	FINISH	ORIFICE	TEMP.	SYMBOL	QUANT.
	K=5.6 PENDANT SPRINKLER COVERAGE: 15'X15'	QUICK RESP. PENDANT K= 4.9	TY2524	TYCD	CONCEALED	LFII	WHITE	1/2"	155°	⊙	194
	K=4.9 PENDANT SPRINKLER COVERAGE: 16'X16'	QUICK RESP. PENDANT K= 4.9	TY2334	TYCD	SEM-REC.	LFII	BRASS	1/2"	155°	⊙	19
	K=4.4 SIDEWALL SPRINKLER COVERAGE: 16'X16'	QUICK RESP. SIDEWALL K= 4.4	TY2334	TYCD	2 PIECE	LFII	WHITE	1/2"	155°	⊙	55
	K=4.2 CONCEALED SPACE SPRINKLER C22 SPACING 7'-0" MIN 12'-0" MAX.	QUICK RESP. PENDANT K= 5.6	TY 3231	TYCD	N/A	TY-FRB	WHITE	1/2"	155°	⊙	11
		Q. R. CONCEALED SPACE K=4.2	TY 2189	TYCD	N/A	CC2	BRASS	1/2"	175°	⊙	104
TOTAL SPRINKLERS THIS DRAWING											383

INSPECTIONS	
1.	
2.	
3.	
4.	
RESPONSIBLE MANAGING SUPERVISOR #348	
CONTRACTOR LICENSE #295	

DANFORTH ON HIGH CONDOMINIUMS  
 81 DANFORTH STREET  
 PORTLAND, MAINE 04101

FIRE PROTECTION PLAN

FREEDOM FIRE PROTECTION, INC.  
 209 QUAKER RIDGE ROAD  
 CASCO, MAINE 04015

JOB No. M0094  
 DATE 10/16/12  
 DRAWN BY M/JN  
 SCALE AS NOTED  
 SHEET No. FP-3 of 3