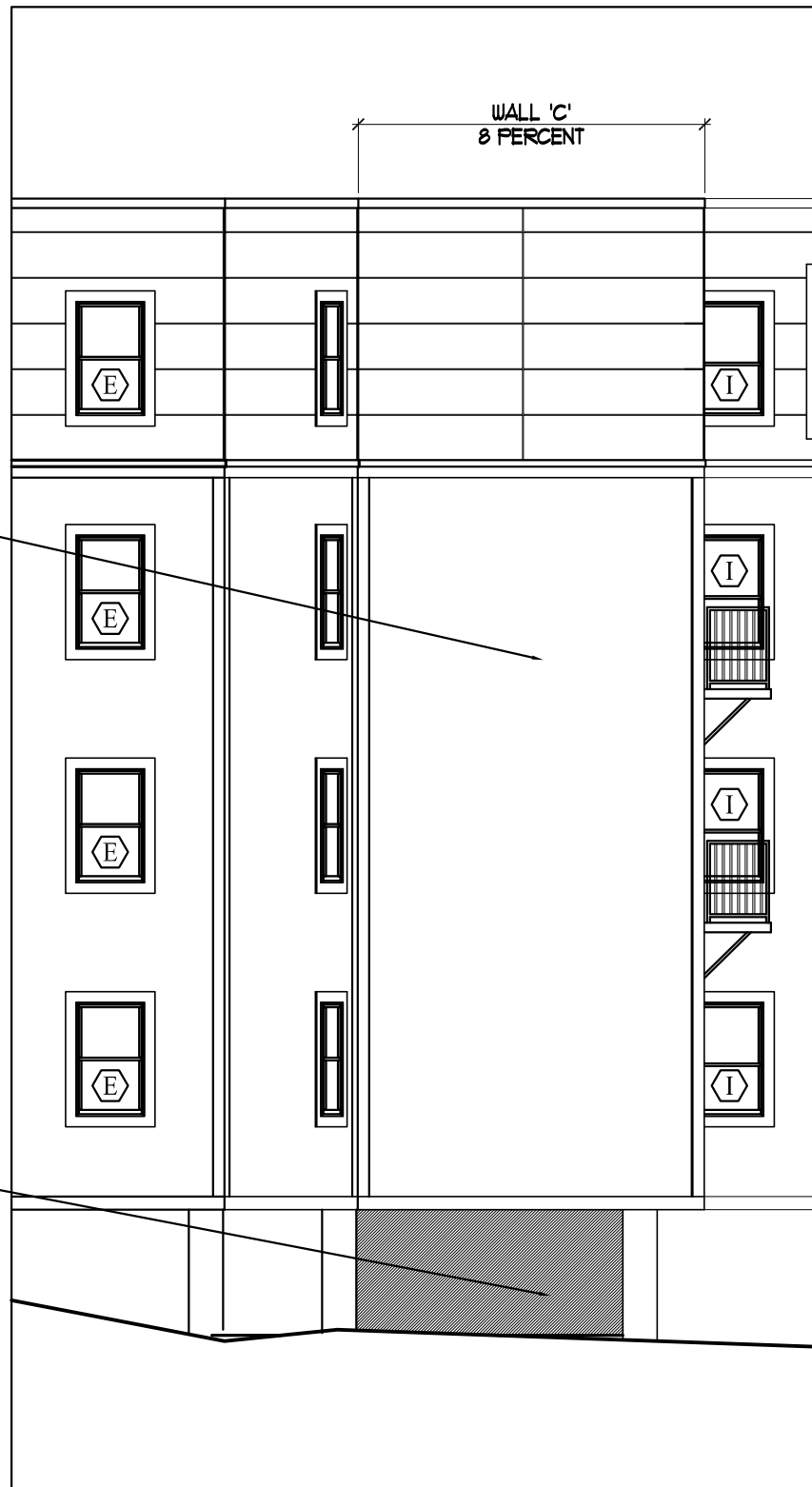


3 PARTIAL PLAN DETAIL

SCALE: 1/8" = 1'-0"



TOTAL SQUARE  
FOOTAGE OF WALL 'B'  
SURFACE - 744 SQFT.

TOTAL SQUARE  
FOOTAGE OF OPENING  
WALL 'B' - 63.4 SQFT.  
FOR A TOTAL OF 8  
PERCENT

4 PARTIAL ELEVATION DETAIL

SCALE: 1/8" = 1'-0"