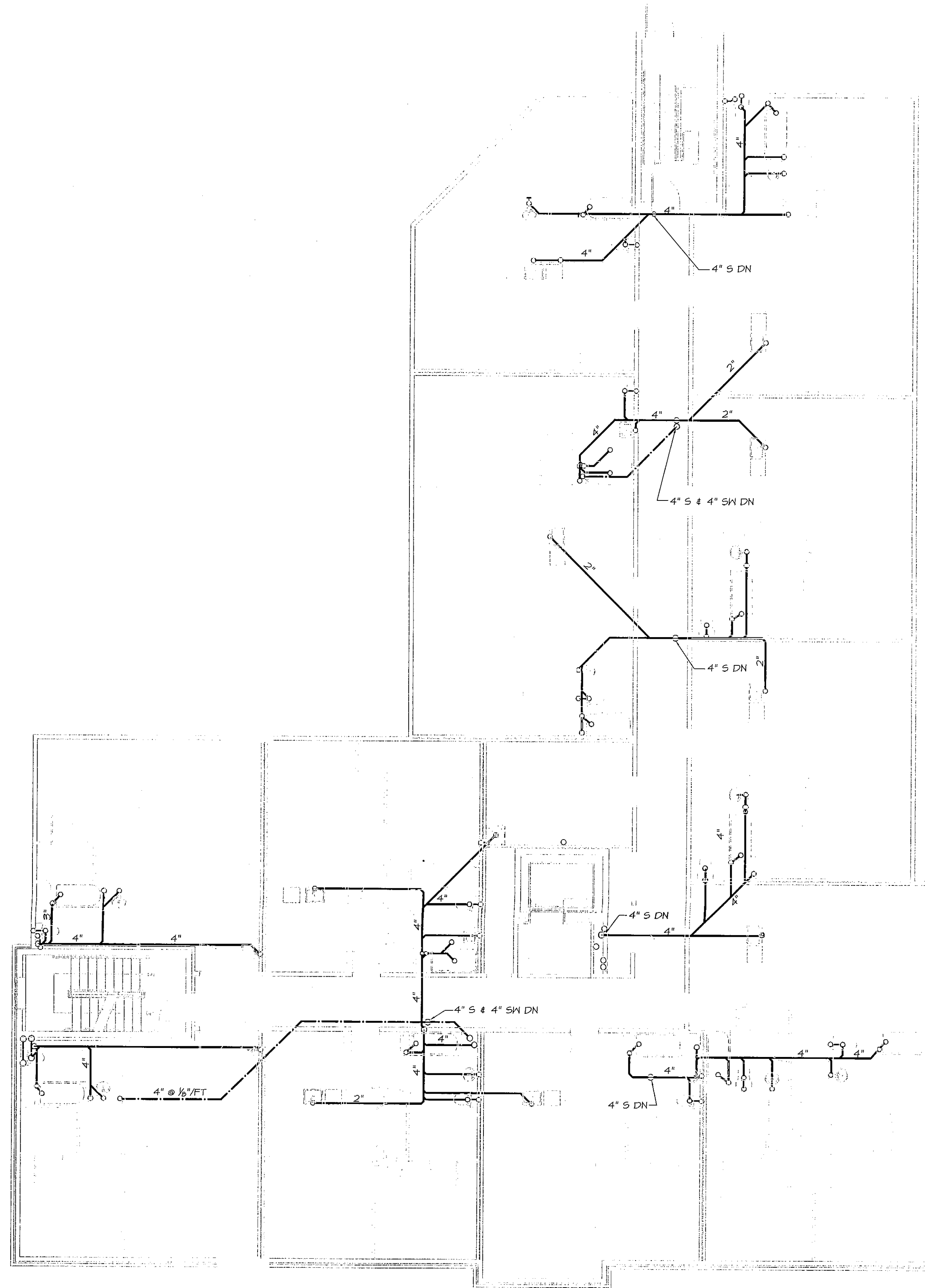


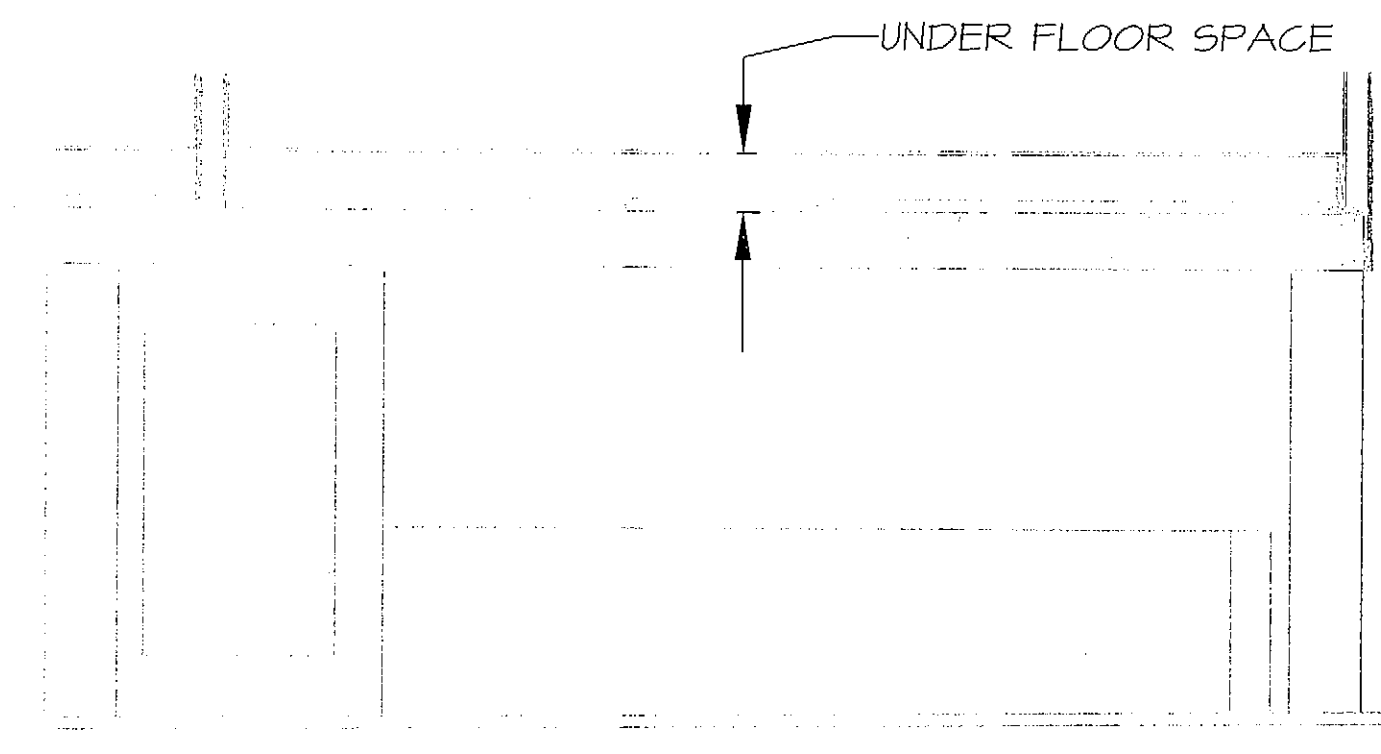
July 28, 2008 - 9:10 am
 \\meffps1\projects\0812 53 Danforth\Drawings\0812 P101-P111.dwg



- NOTES:
1. ALL 4" PIPING UNDER FLOOR SHALL BE RUN AT 1/8"FT WHERE REQUIRED.
 2. INTERIOR PARTITIONS AND FIXTURES SHOWN FOR REFERENCE ONLY.

PLUMBING PLAN - SECOND FLOOR
UNDER FLOOR SPACE

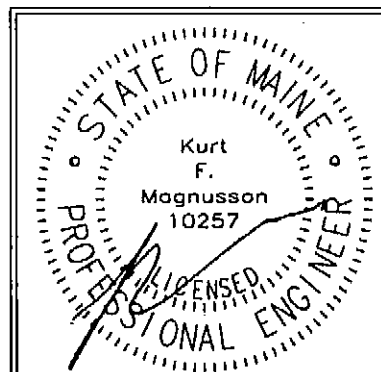
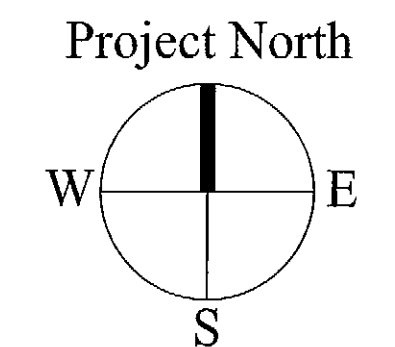
SCALE: 1/8" = 1'-0"



PARTIAL SECTION
 NO SCALE



MECHANICAL SYSTEMS ENGINEERS
 ROYAL RIVER CENTER, UNIT #10
 10 FOREST FALLS DRIVE
 YARMOUTH, MAINE 04096
 VOICE: (207) 846-1441
 FAX: (207) 846-1443
 mechyst@mechse.com
 © COPYRIGHT 2008



OWNER:
 53 DANFORTH STREET, LP
 C/O THE SZANTON COMPANY
 ONE CITY CENTER - 4TH FLOOR
 PORTLAND, ME 04101

ARCHETYPE, P.A.
 ARCHITECTS
 48 Union Wharf Portland, Maine 04101
 (207) 772-6022 Fax (207) 772-4056

Project
 53 DANFORTH
 53 DANFORTH STREET
 PORTLAND, MAINE

Date:	Scale:
28 MAY 2008	AS NOTED
Revisions:	
28 May 2008 - 50% MSHA Submittal	
1 July 2008 - 90% MSHA Submittal	
15 July 2008 - Pricing Set	
25 July 2008 - 100% MSHA Submittal	

PROGRESS SET
 PLUMBING PLAN
 SECOND FLOOR
 UNDER FLOOR SPACE

P1.02
 U.S.E. PROJECT 0812