

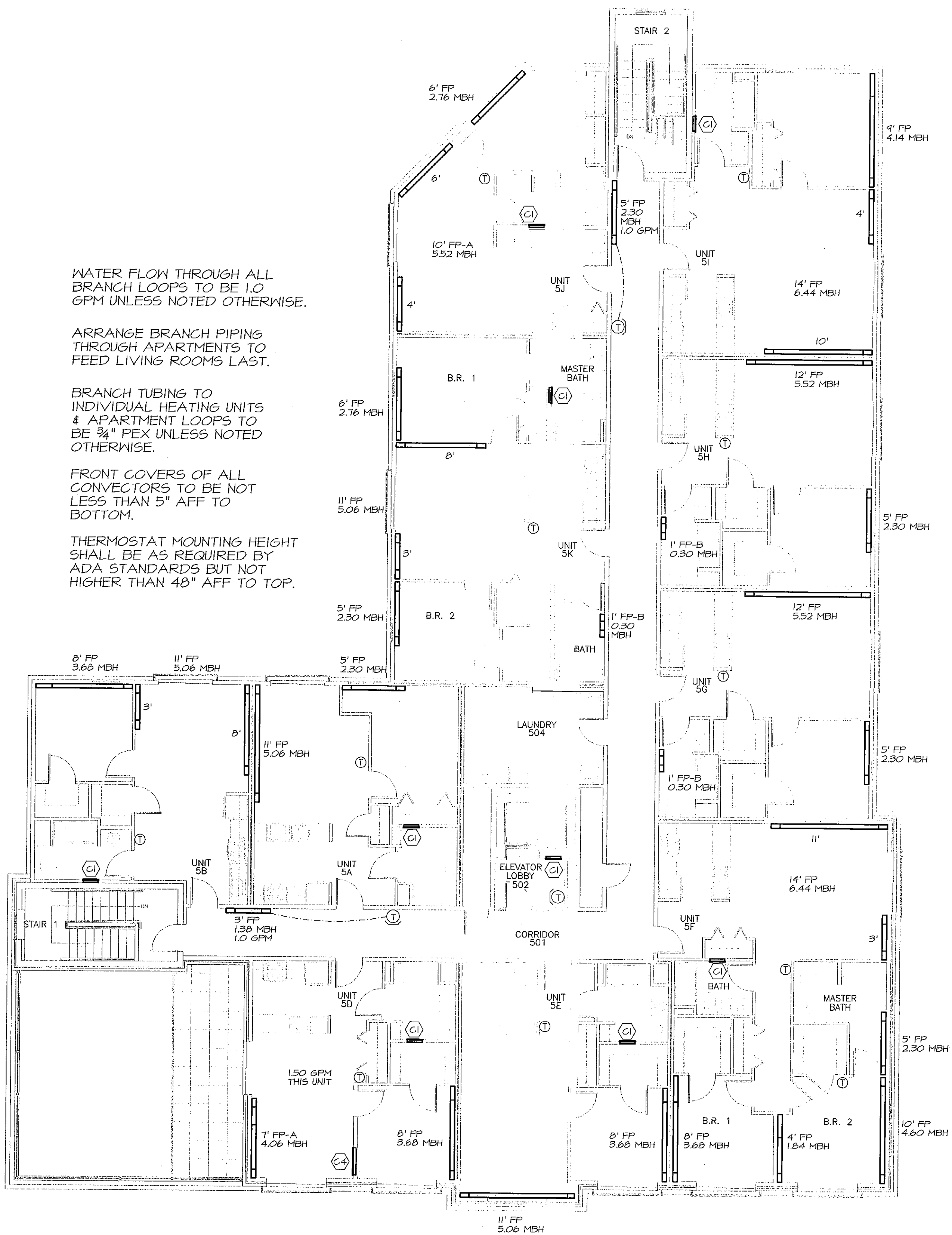
WATER FLOW THROUGH ALL BRANCH LOOPS TO BE 1.0 GPM UNLESS NOTED OTHERWISE.

ARRANGE BRANCH PIPING THROUGH APARTMENTS TO FEED LIVING ROOMS LAST.

BRANCH TUBING TO INDIVIDUAL HEATING UNITS & APARTMENT LOOPS TO BE 3/4" PEX UNLESS NOTED OTHERWISE.

FRONT COVERS OF ALL CONVECTORS TO BE NOT LESS THAN 5" AFF TO BOTTOM.

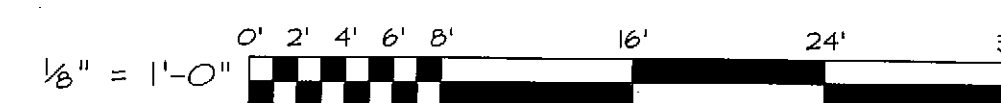
THERMOSTAT MOUNTING HEIGHT SHALL BE AS REQUIRED BY ADA STANDARDS BUT NOT HIGHER THAN 48" AFF TO TOP.



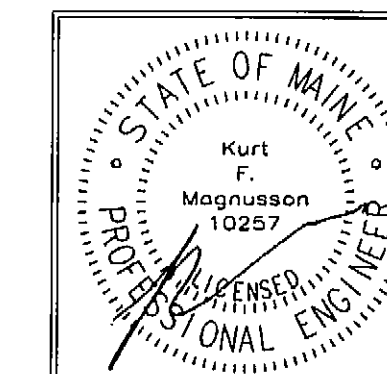
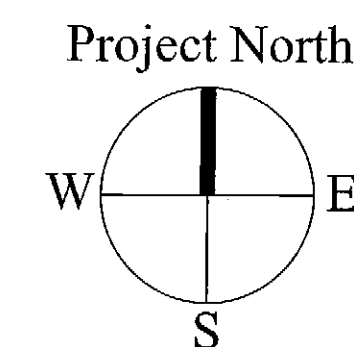
1 MECHANICAL FIFTH FLOOR PLAN  
SCALE: 1/8" = 1'-0"



2 MECHANICAL ROOF PLAN  
SCALE: 1/8" = 1'-0"



**MECHANICAL SYSTEMS ENGINEERS**  
ROYAL RIVER CENTER, UNIT #10  
10 FOREST FALLS DRIVE  
YARMOUTH, MAINE 04096  
VOICE: (207) 846-1441  
FAX: (207) 846-1443  
mechan@maine.me.com  
© COPYRIGHT 2008



OWNER:  
53 DANFORTH STREET, LP  
C/O THE SZANTON COMPANY  
ONE CITY CENTER - 4TH FLOOR  
PORTLAND, ME 04101

ARCHETYPE, P.A.  
ARCHITECTS  
48 Union Wharf Portland, Maine 04101  
(207) 772-6022 Fax (207) 772-4056

Project  
53 DANFORTH  
53 DANFORTH STREET  
PORTLAND, MAINE

Date: 28 MAY 2008  
Scale: AS NOTED  
Revisions:  
28 May 2008 - 50% MSHA Submittal  
1 July 2008 - 90% MSHA Submittal  
15 July 2008 - Pricing Set  
25 July 2008 - 100% MSHA Submittal

PROGRESS SET  
MECHANICAL PLANS  
5th FLOOR & ROOF

M1.03  
M.S.E. PROJECT 0812