

OWNER:  
 53 DANFORTH STREET, LP  
 C/O THE SZANTON COMPANY  
 ONE CITY CENTER - 4TH FLOOR  
 PORTLAND, ME 04101

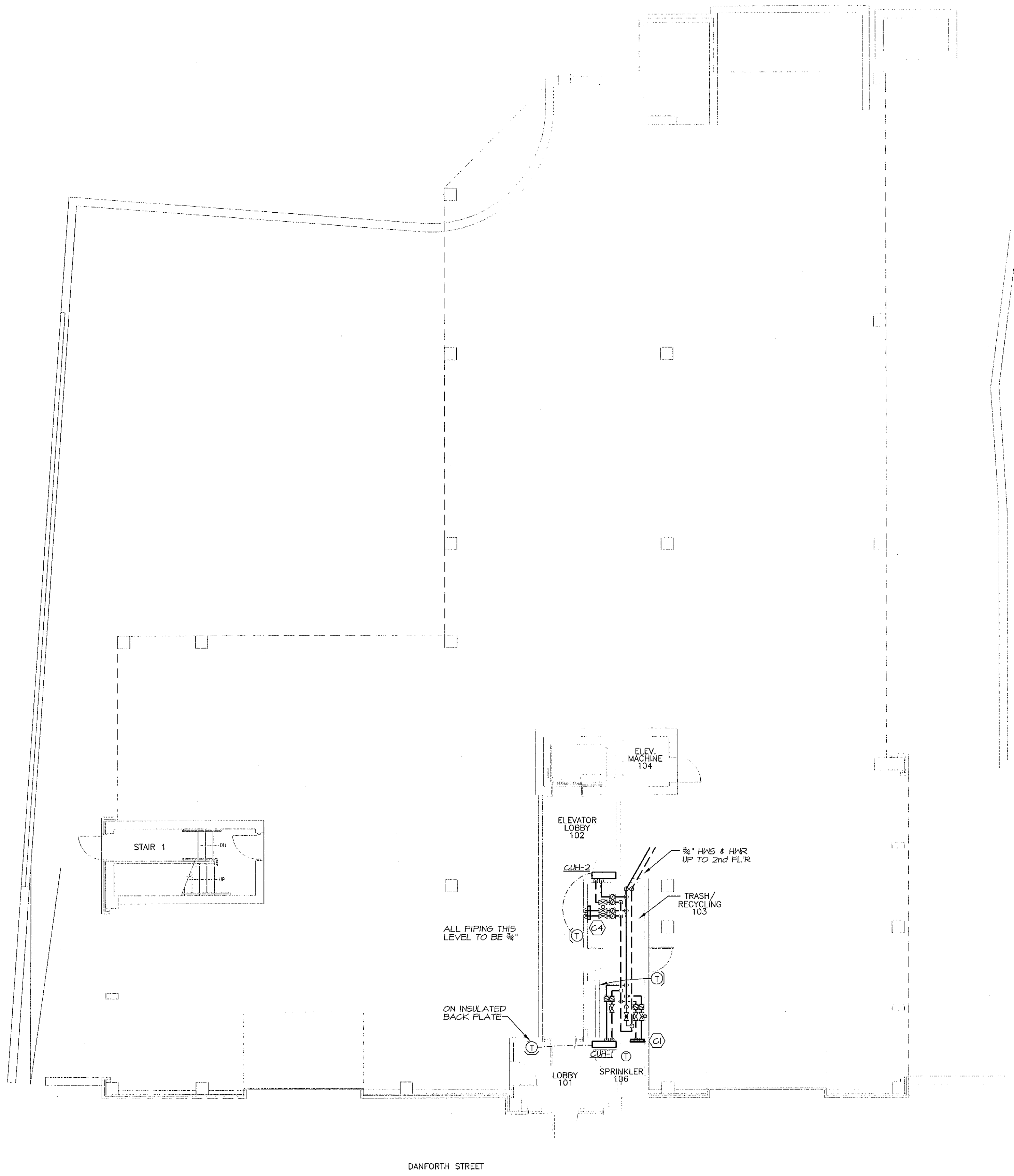
ARCHETYPE, P.A.  
 ARCHITECTS  
 48 Union Wharf Portland, Maine 04101  
 (207) 772-6022 Fax (207) 772-4056

Project:  
 53 DANFORTH  
 53 DANFORTH STREET  
 PORTLAND, MAINE

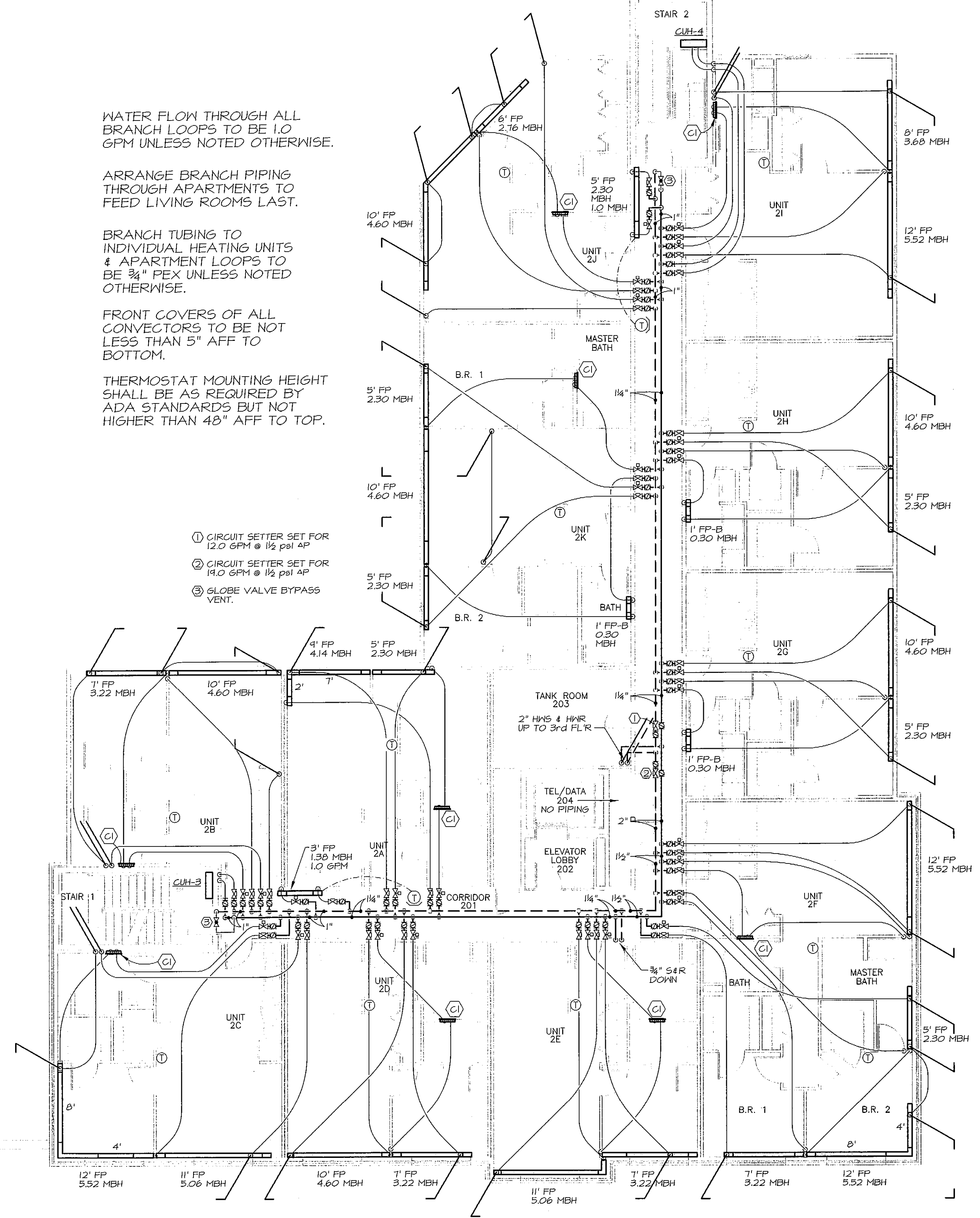
Date: 28 MAY 2008  
 Scale: AS NOTED  
 Revisions:  
 28 May 2008 - 50% MSHA Submittal  
 1 July 2008 - 90% MSHA Submittal  
 15 July 2008 - Pricing Set  
 25 July 2008 - 100% MSHA Submittal

PROGRESS SET  
 MECHANICAL PLANS  
 1st & 2nd FLOORS

M1.01  
 M.S.E. PROJECT 0812



1 MECHANICAL FIRST FLOOR PLAN  
 SCALE: 1/8" = 1'-0"



2 MECHANICAL SECOND FLOOR PLAN  
 SCALE: 1/8" = 1'-0"

WATER FLOW THROUGH ALL BRANCH LOOPS TO BE 1.0 GPM UNLESS NOTED OTHERWISE.

ARRANGE BRANCH PIPING THROUGH APARTMENTS TO FEED LIVING ROOMS LAST.

BRANCH TUBING TO INDIVIDUAL HEATING UNITS & APARTMENT LOOPS TO BE 3/4" PEX UNLESS NOTED OTHERWISE.

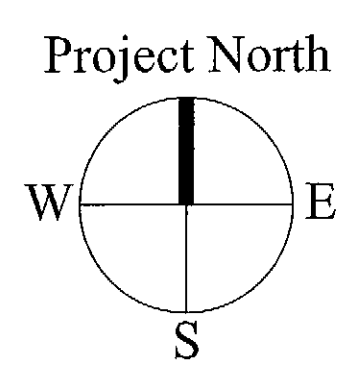
FRONT COVERS OF ALL CONVECTORS TO BE NOT LESS THAN 5" AFF TO BOTTOM.

THERMOSTAT MOUNTING HEIGHT SHALL BE AS REQUIRED BY ADA STANDARDS BUT NOT HIGHER THAN 48" AFF TO TOP.

- 1 CIRCUIT SETTER SET FOR 12.0 GPM @ 1/2 psi AP
- 2 CIRCUIT SETTER SET FOR 19.0 GPM @ 1/2 psi AP
- 3 GLOBE VALVE BYPASS VENT.



MECHANICAL SYSTEMS ENGINEERS  
 ROYAL RIVER CENTER, UNIT #10  
 10 FOREST FALLS DRIVE  
 YARMOUTH, MAINE 04096  
 VOICE: (207) 846-1441  
 FAX: (207) 846-1442  
 mechsys@maine.rr.com  
 © COPYRIGHT 2008



July 25, 2008 - 10:21 am  
 \\server\projects\0812\_53\_Danforth\Drawings\0812\_M101-M105.dwg