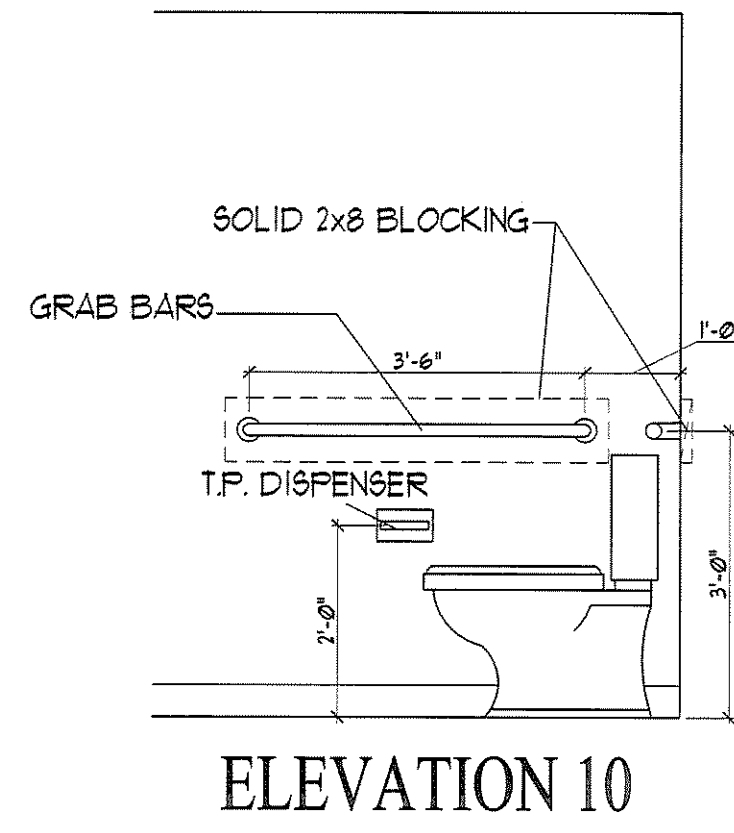
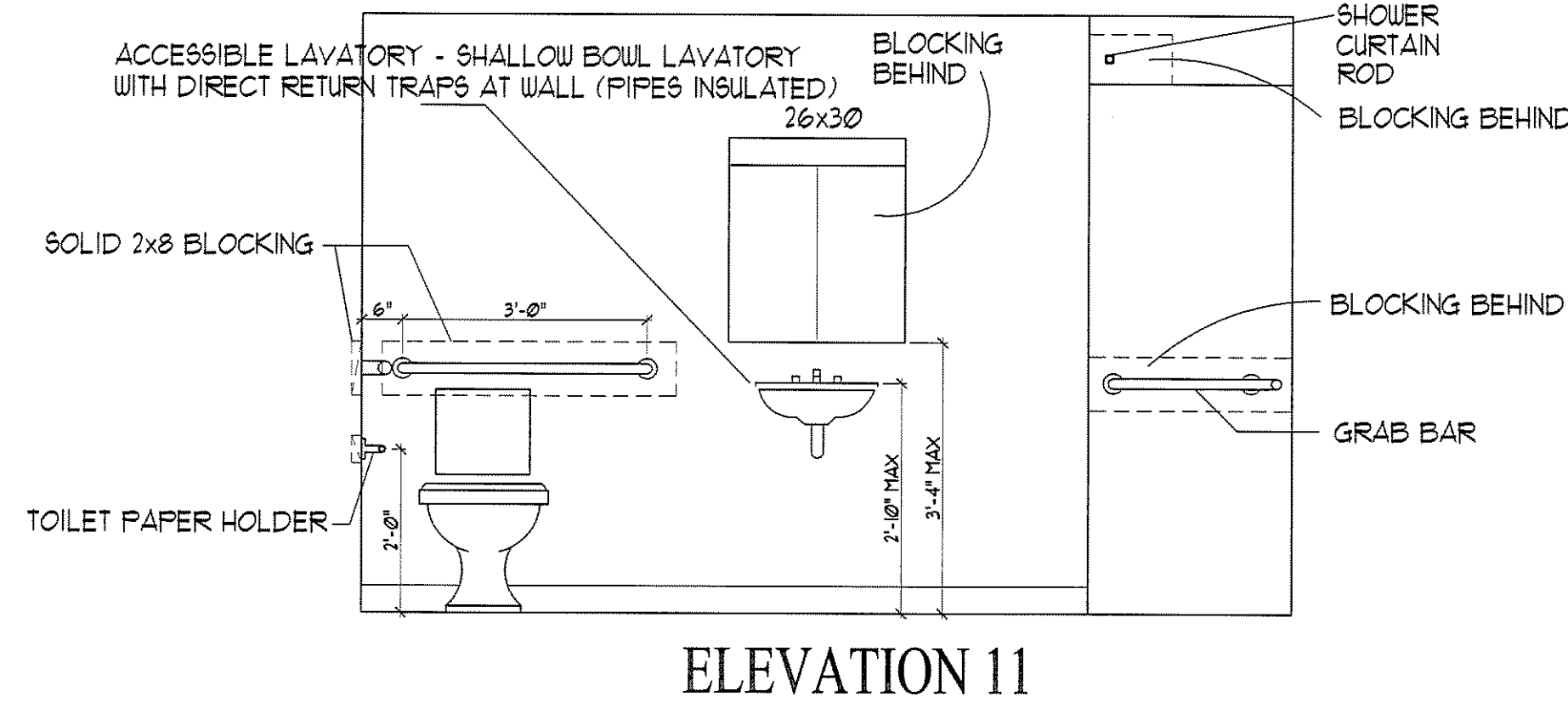


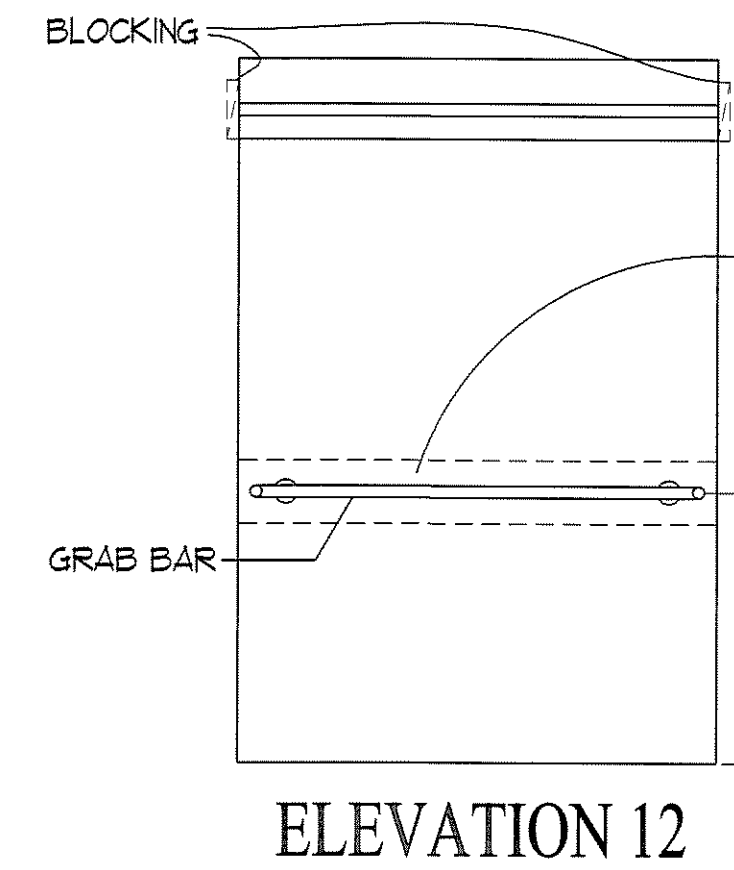
K DWELLING UNIT TYPE 'K' (FLOORS 2, 3 & 4)
 SCALE: 1/4" = 1'-0"
 • DESIGNED TO MEET ANSI INTL - 'TYPE A'
 • FULLY ACCESSIBLE
 • TWO-BEDROOM, TWO BATH (1 BATHRM MEETS 1024.1.3.1 OPTION B, 1 BATHRM NOT ACCESSIBLE)
 • 889 SQUARE FEET
 • STORAGE = 484 CU. FT.



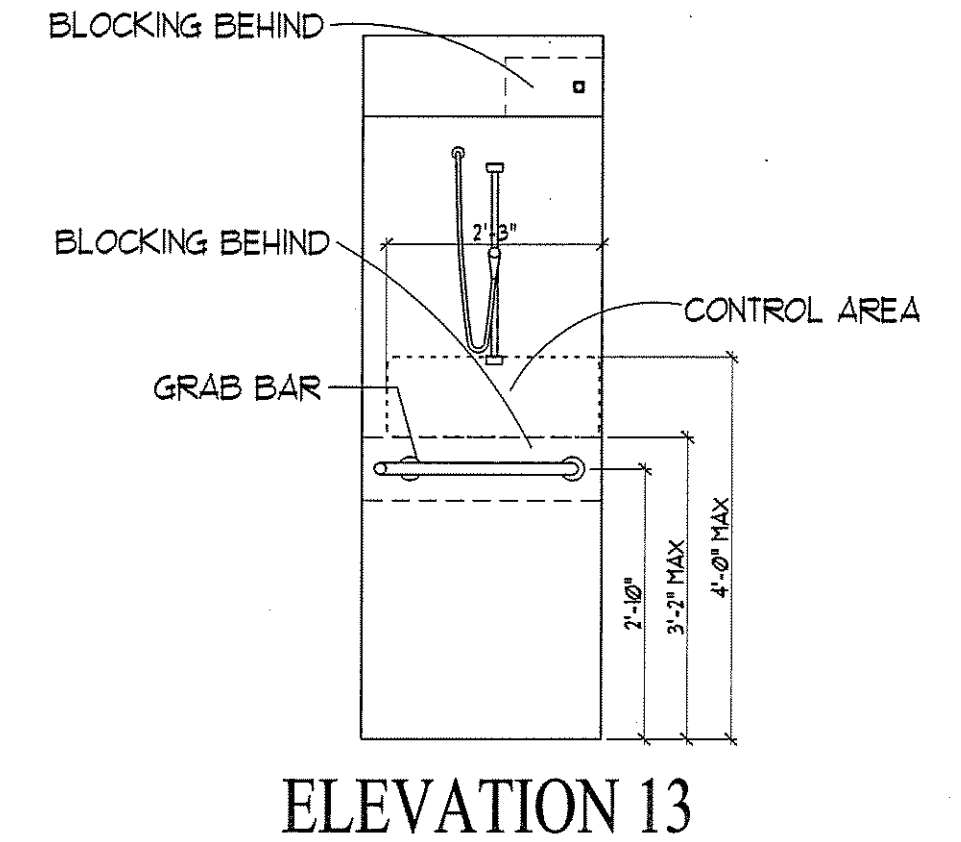
ELEVATION 10



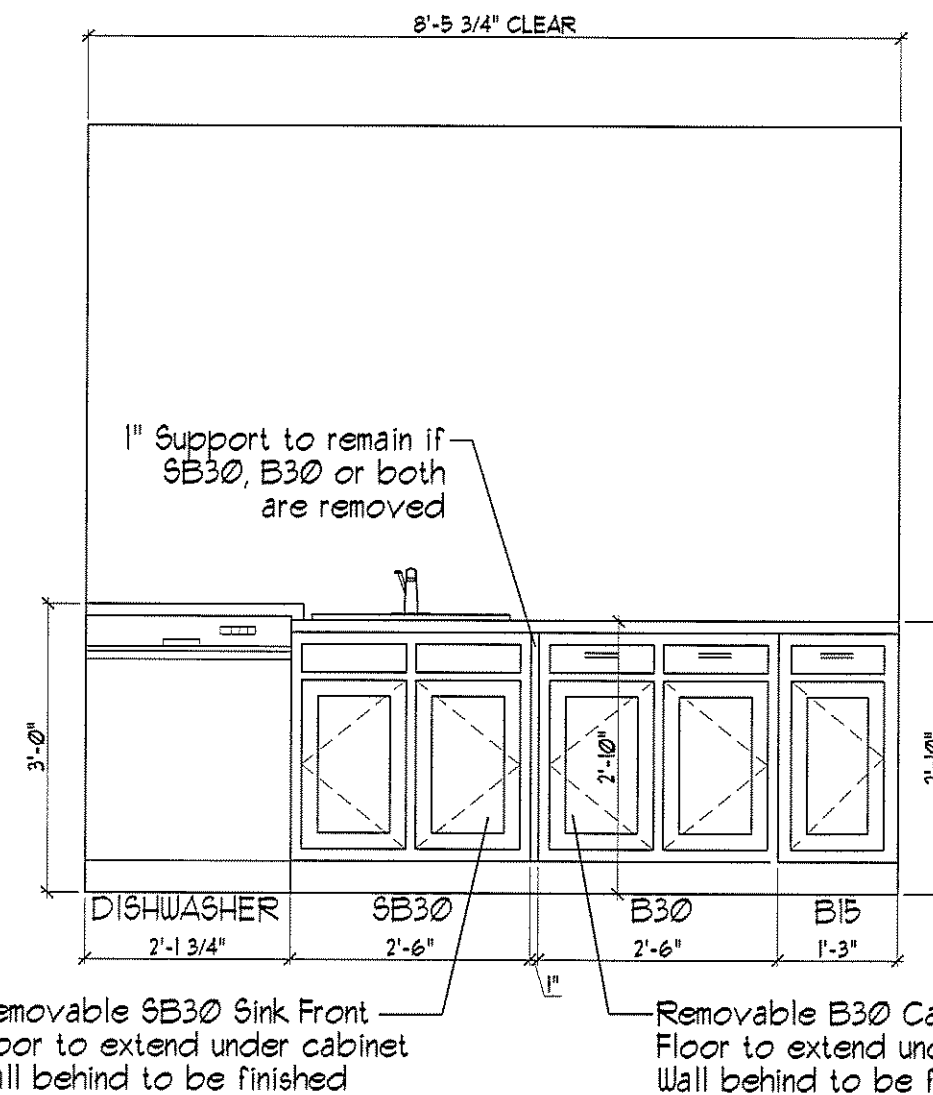
ELEVATION 11



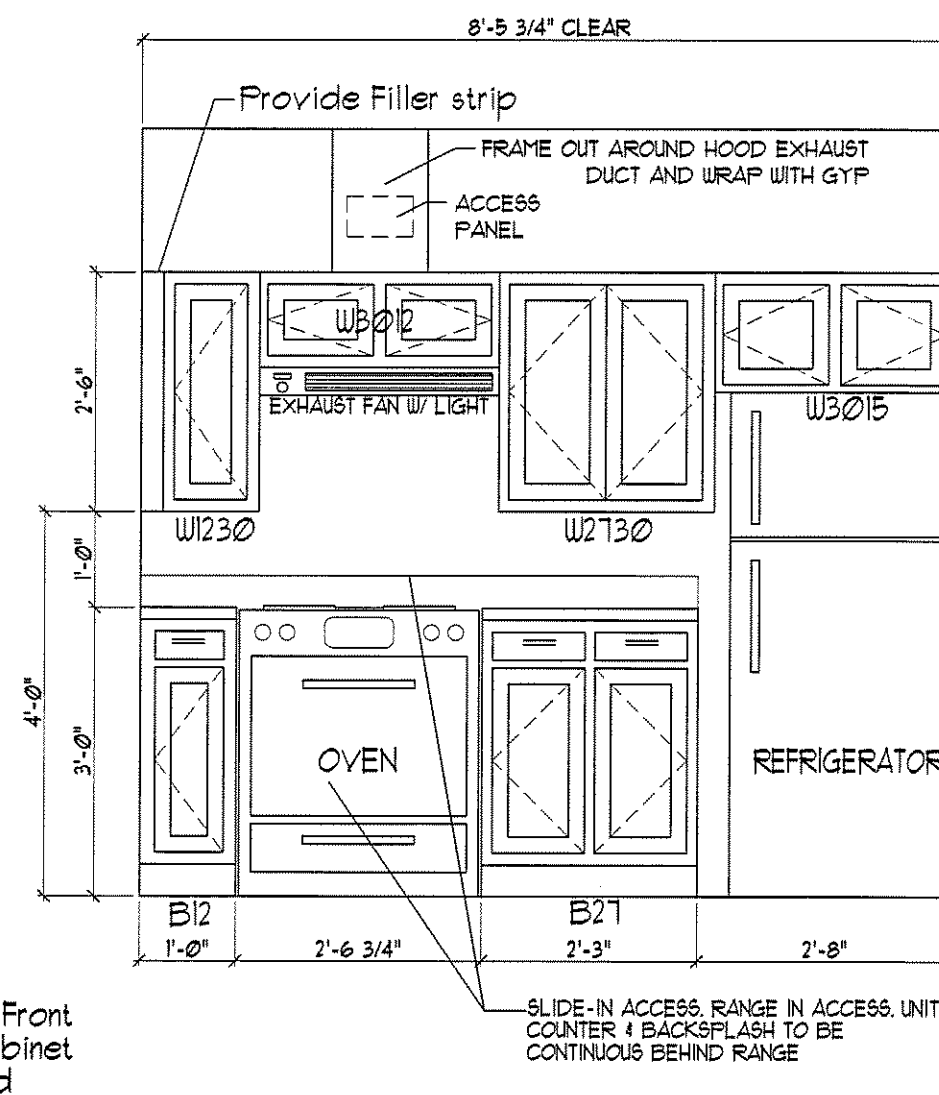
ELEVATION 12



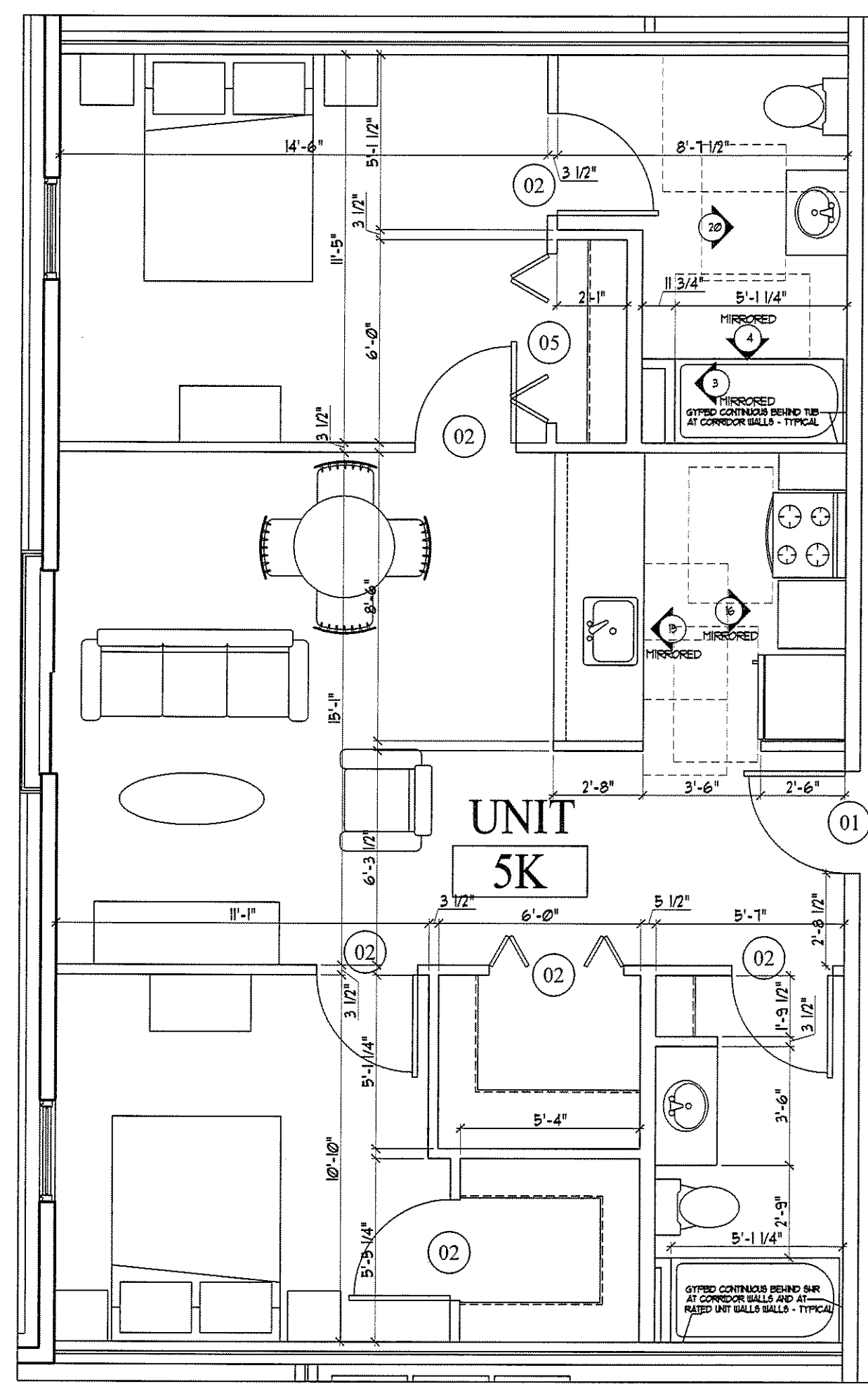
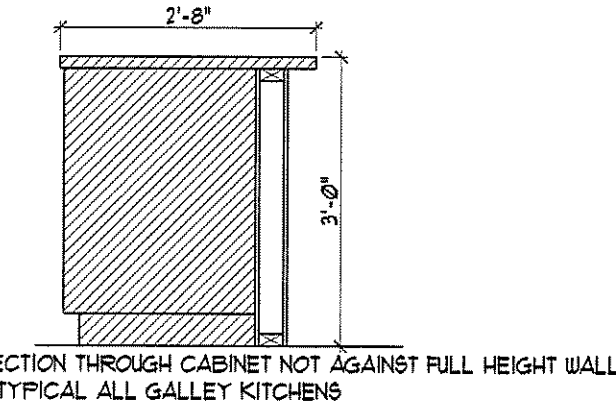
ELEVATION 13



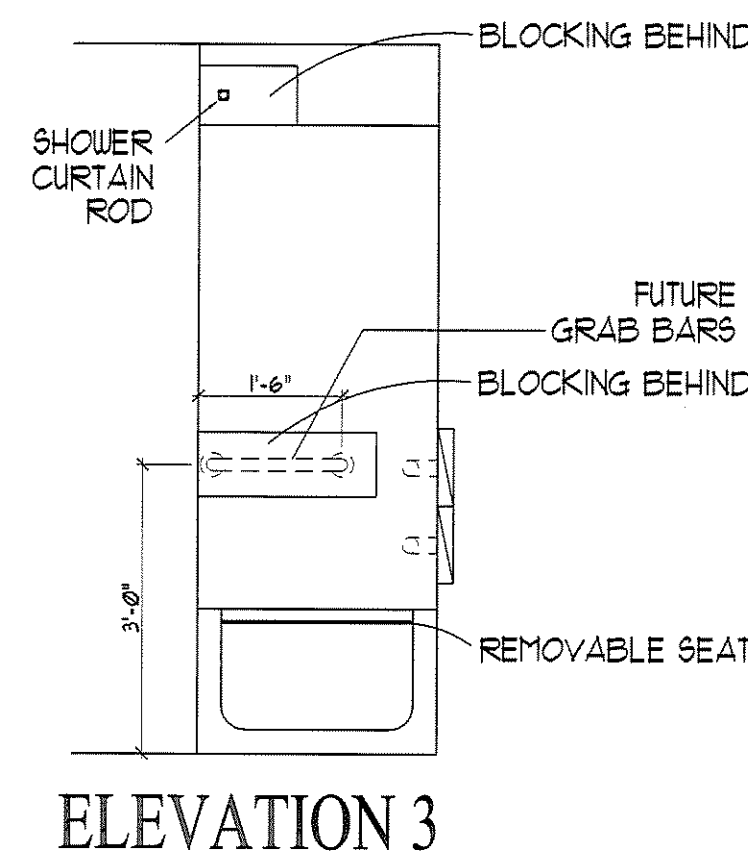
ELEVATION 17



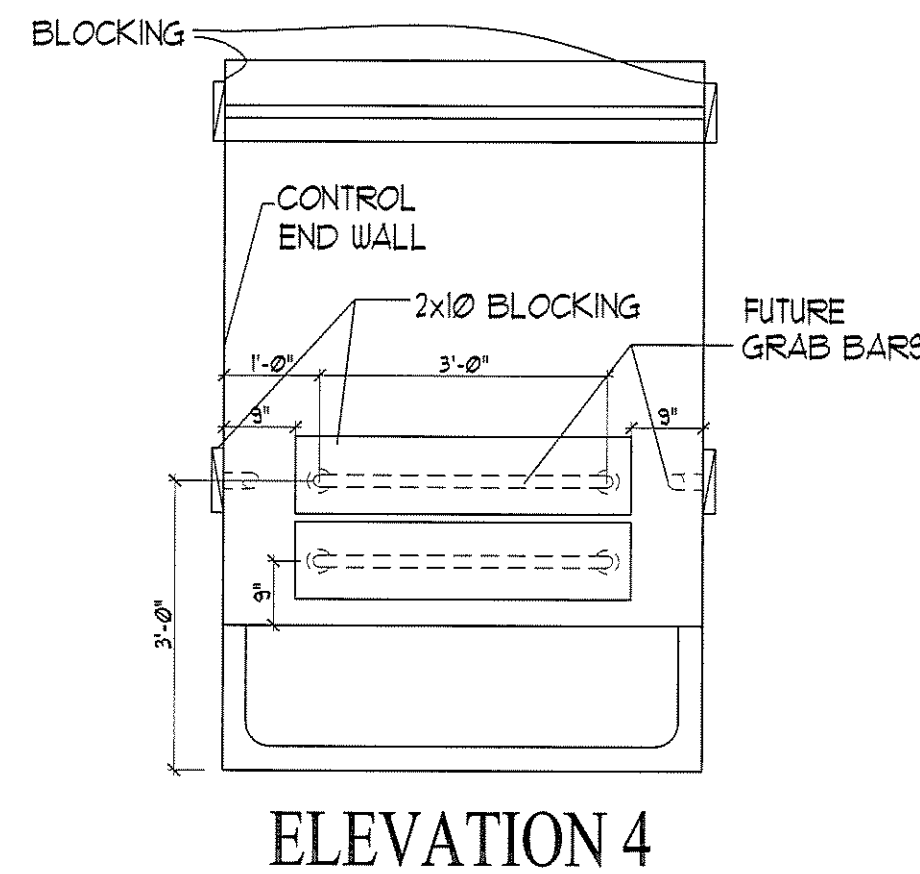
ELEVATION 18



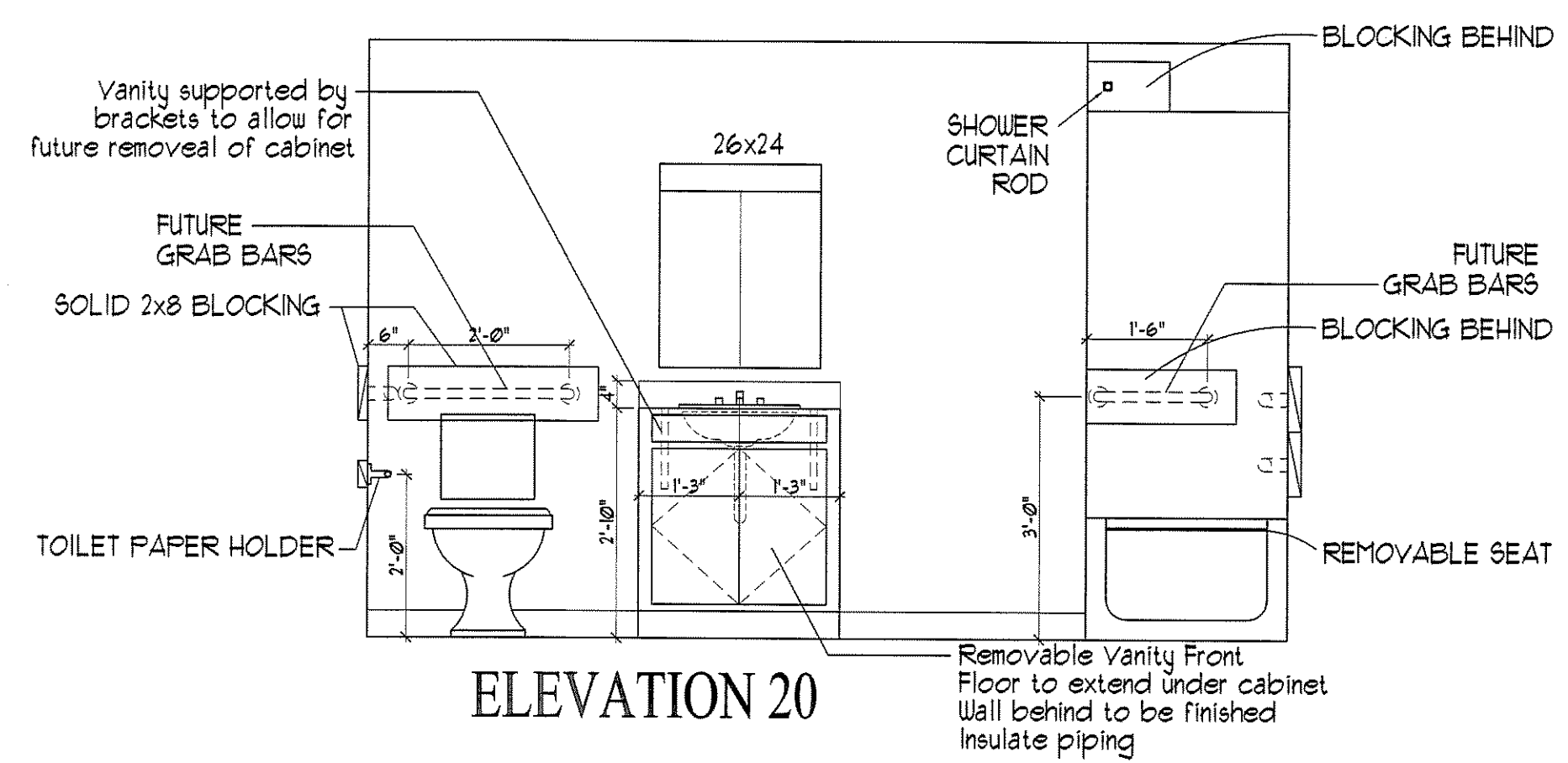
5K DWELLING UNIT TYPE '5K' (5TH FLOOR)
 SCALE: 1/4" = 1'-0"
 • DESIGNED TO MEET ANSI INTL - 'TYPE B'
 • TWO-BEDROOM, TWO BATH (1 BATHRM MEETS 1024.1.3.1 OPTION B, 1 BATHRM NOT ACCESSIBLE)
 • 899 SQUARE FEET
 • STORAGE = 484 CU. FT.



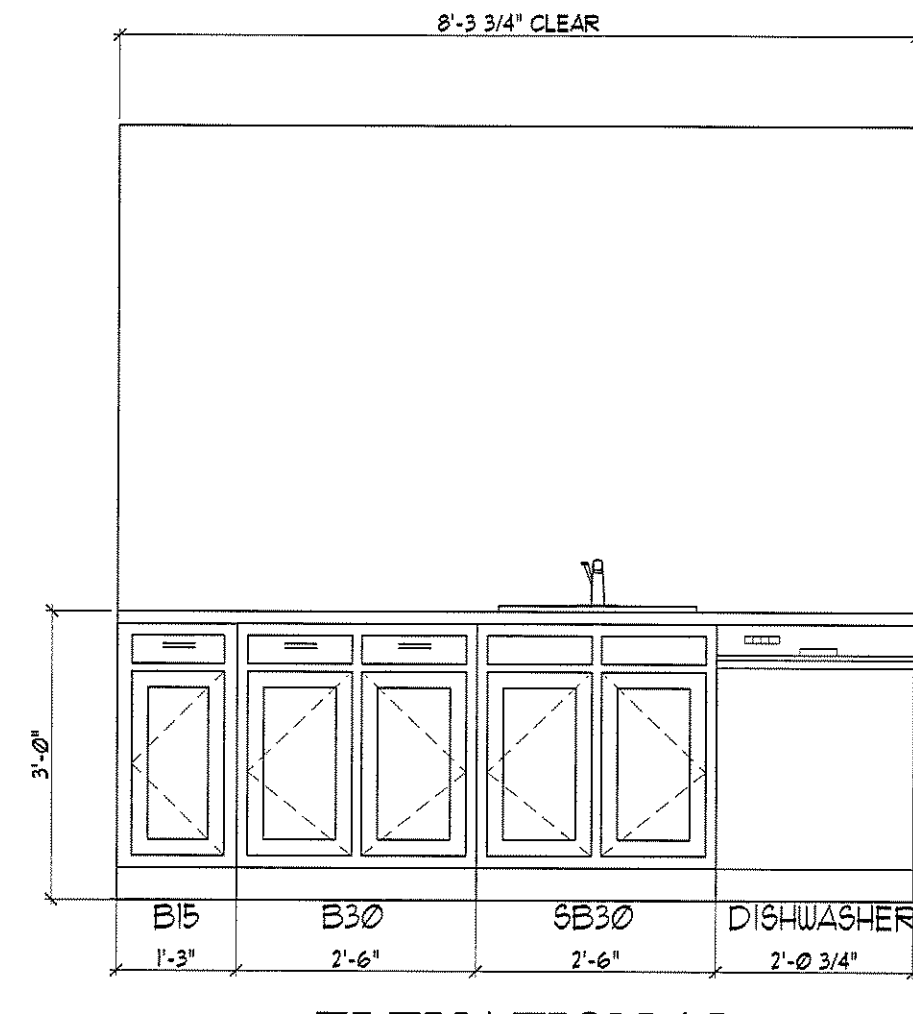
ELEVATION 3



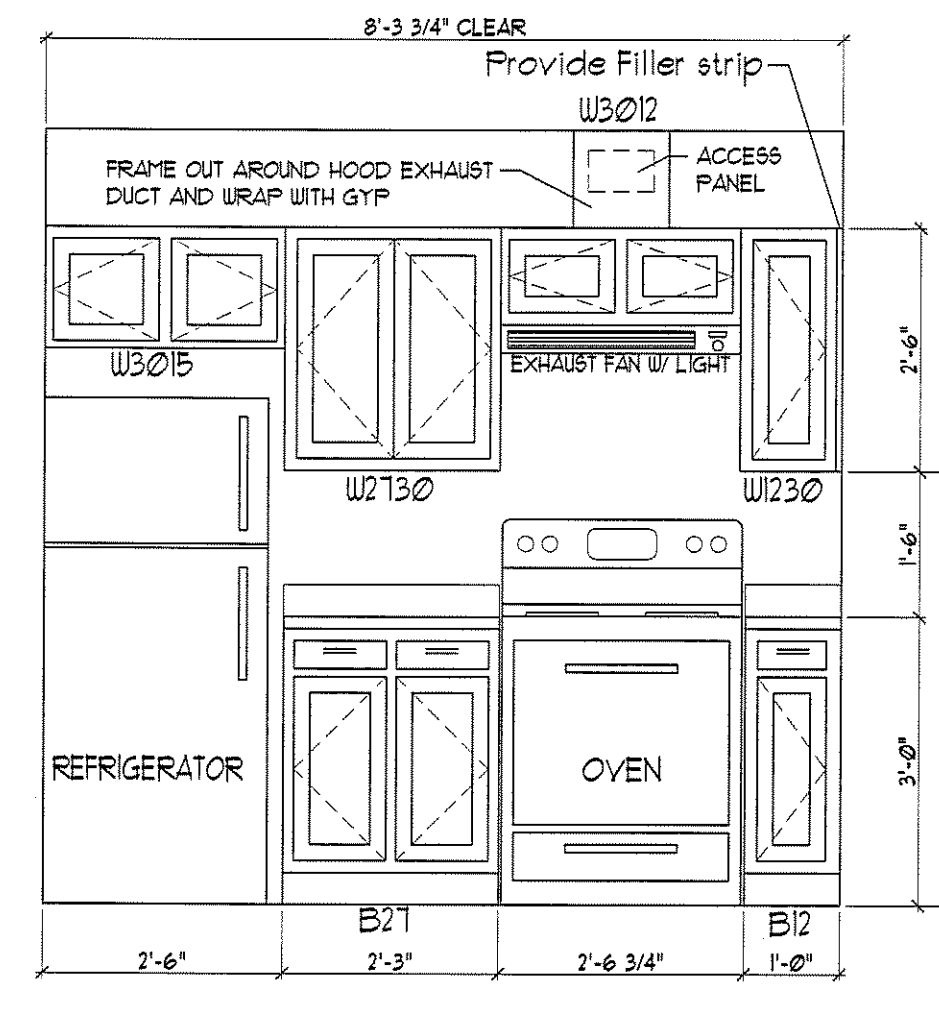
ELEVATION 4



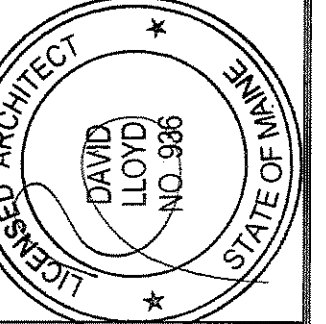
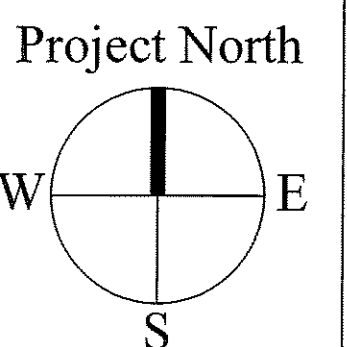
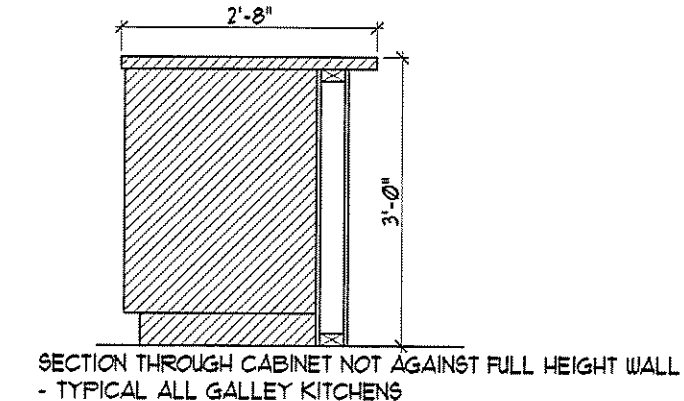
ELEVATION 20



ELEVATION 15



ELEVATION 16



OWNER:
53 DANFORTH STREET, LP
 C/O THE SZANTON COMPANY
 ONE CITY CENTER - 4TH FLOOR
 PORTLAND, ME 04101

ARCHETYPE, P.A.
 ARCHITECTS
 48 Union Wharf Portland, Maine 04101
 (207) 772-6022 Fax (207) 772-4056

Project:
53 DANFORTH
 53 DANFORTH STREET
 PORTLAND, MAINE

Revisions:
 28 May 2008 - 50% MSHA Submittal
 1 July 2008 - 90% MSHA Submittal
 15 July 2008 - Pricing Set
 25 July 2008 - 100% MSHA Submittal

Date: 28 May 2008
 Scale: 1/4" = 1'-0"
ENLARGED UNIT PLANS

A6.06