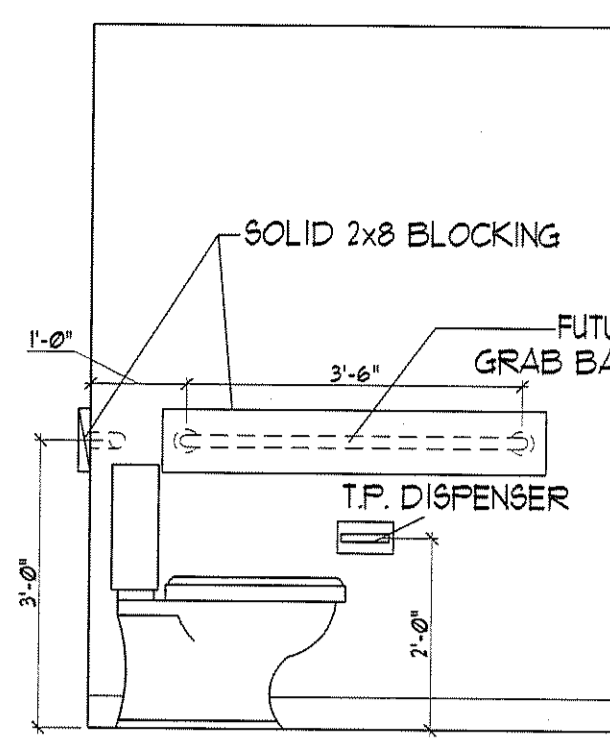
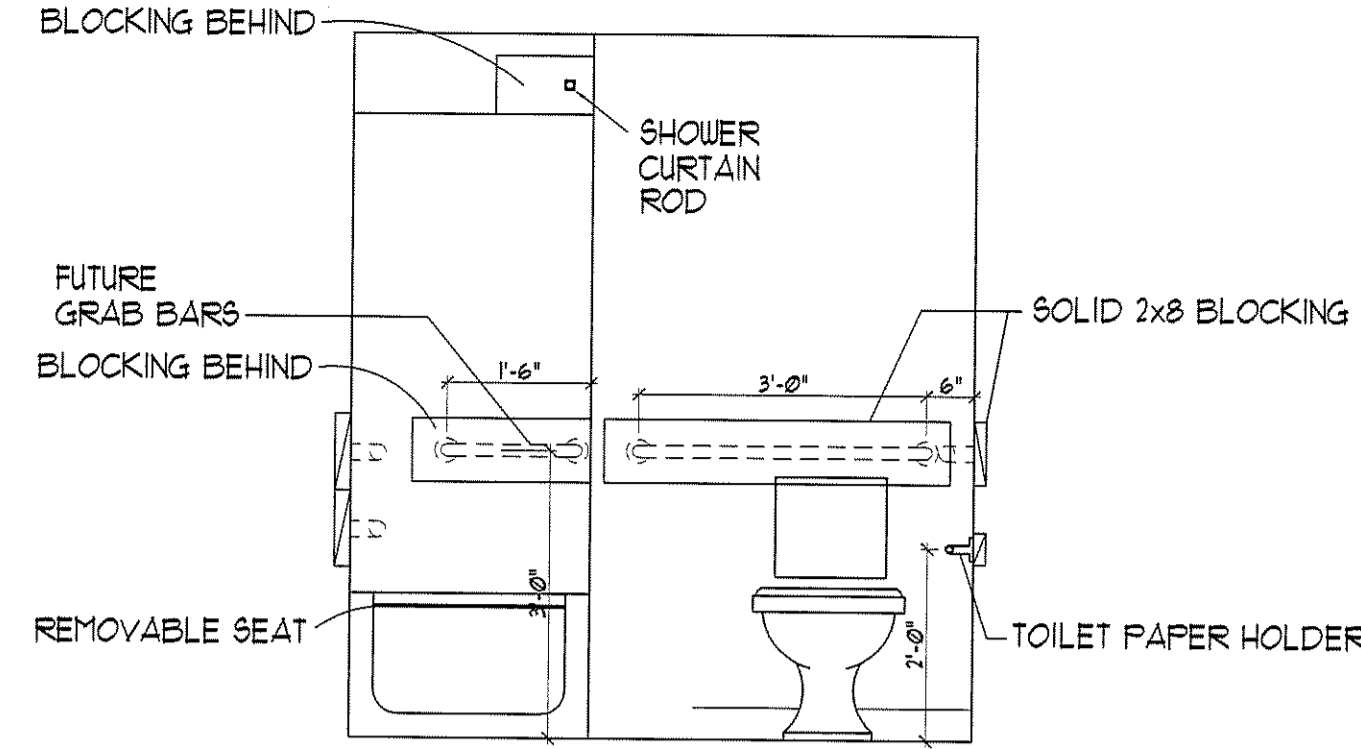


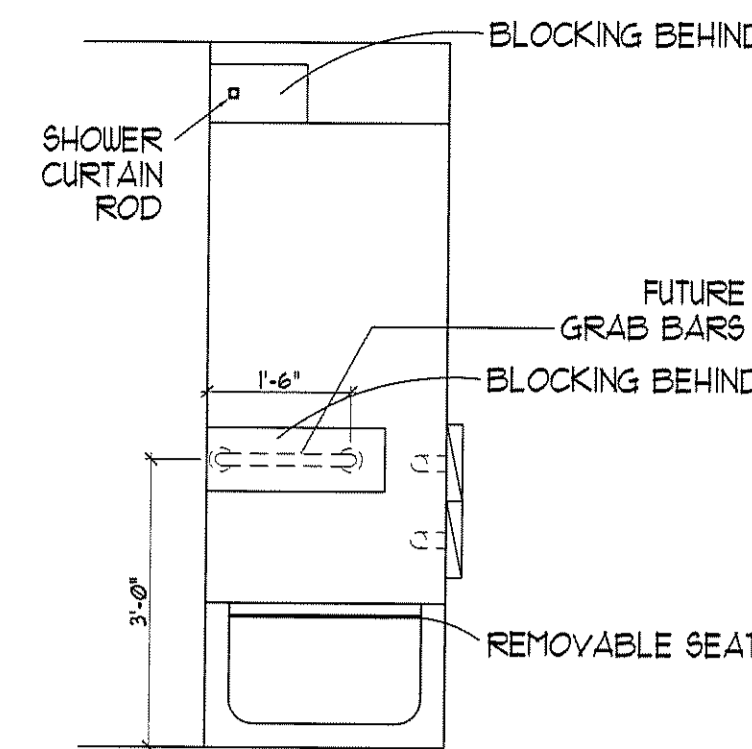
DWELLING UNIT TYPE 'I'
 SCALE: 1/4" = 1'-0"
 • DESIGNED TO MEET ANSI ITU - TYPE B
 • ONE-BEDROOM, ONE BATH (OPTION A)
 • 681 SQUARE FEET
 • STORAGE = 202 CU. FT.



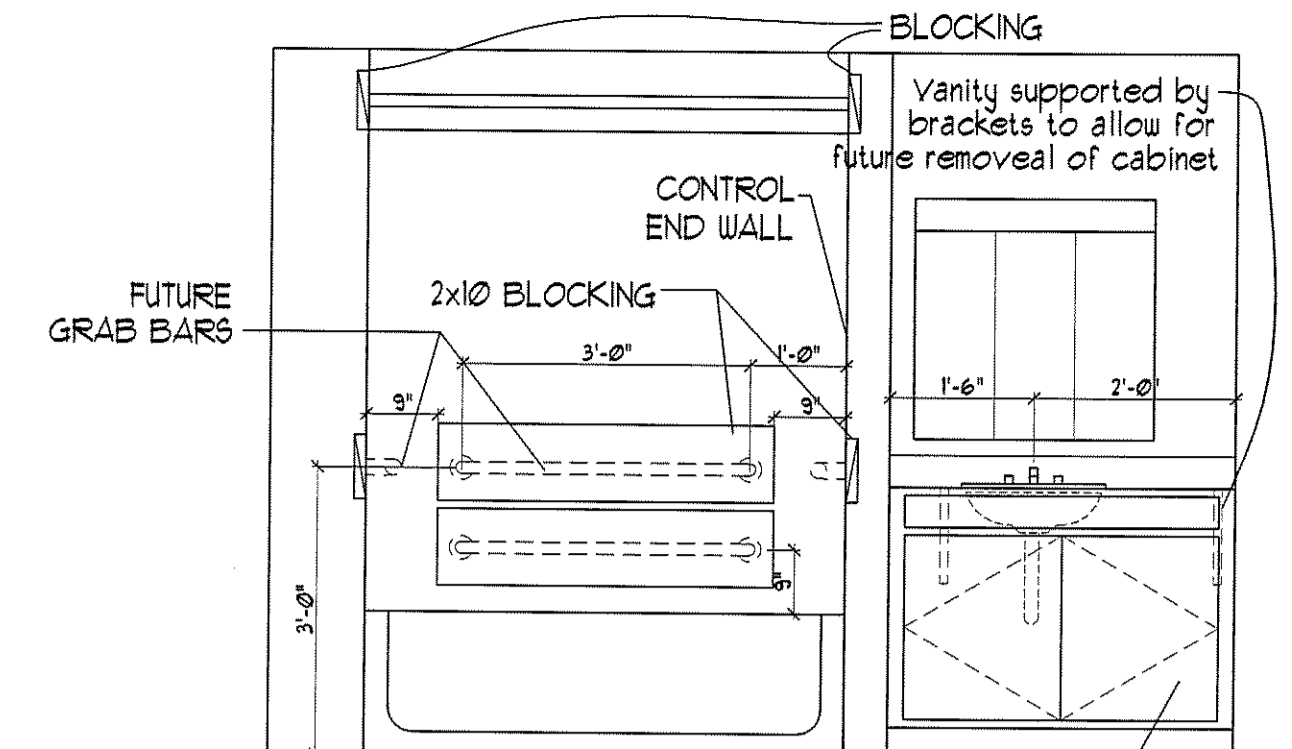
ELEVATION 1



ELEVATION 2

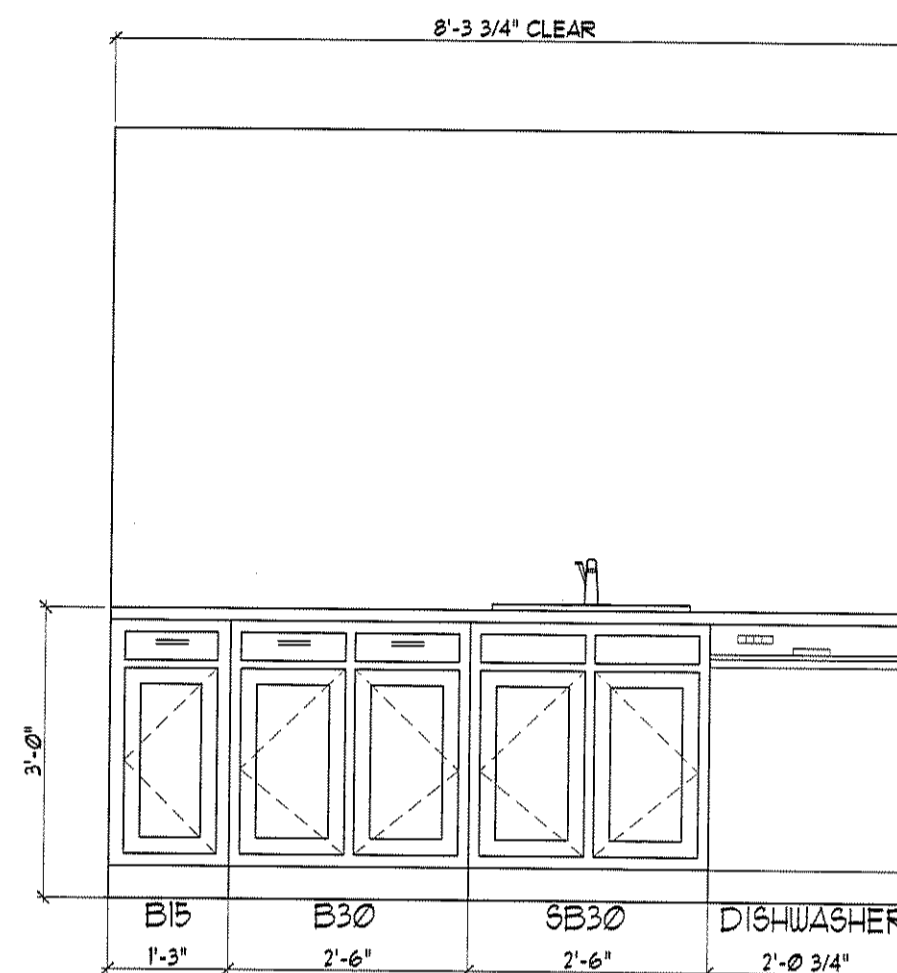


ELEVATION 3

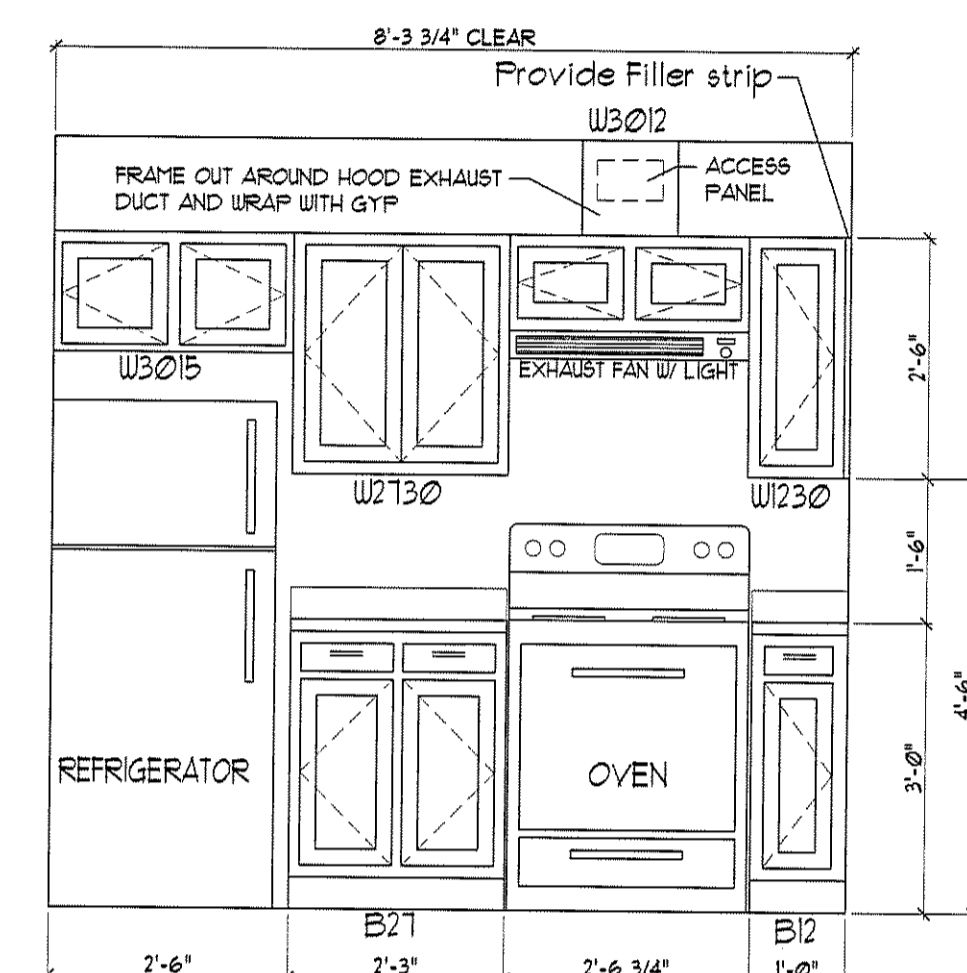


ELEVATION 8

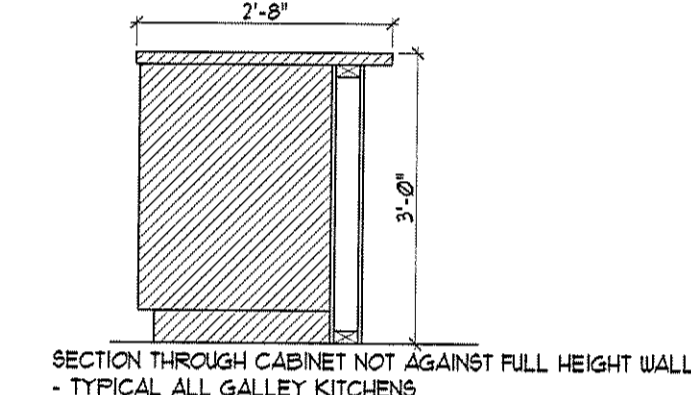
Removable Vanity Front
 Floor to extend under cabinet
 Wall behind to be finished
 insulate piping



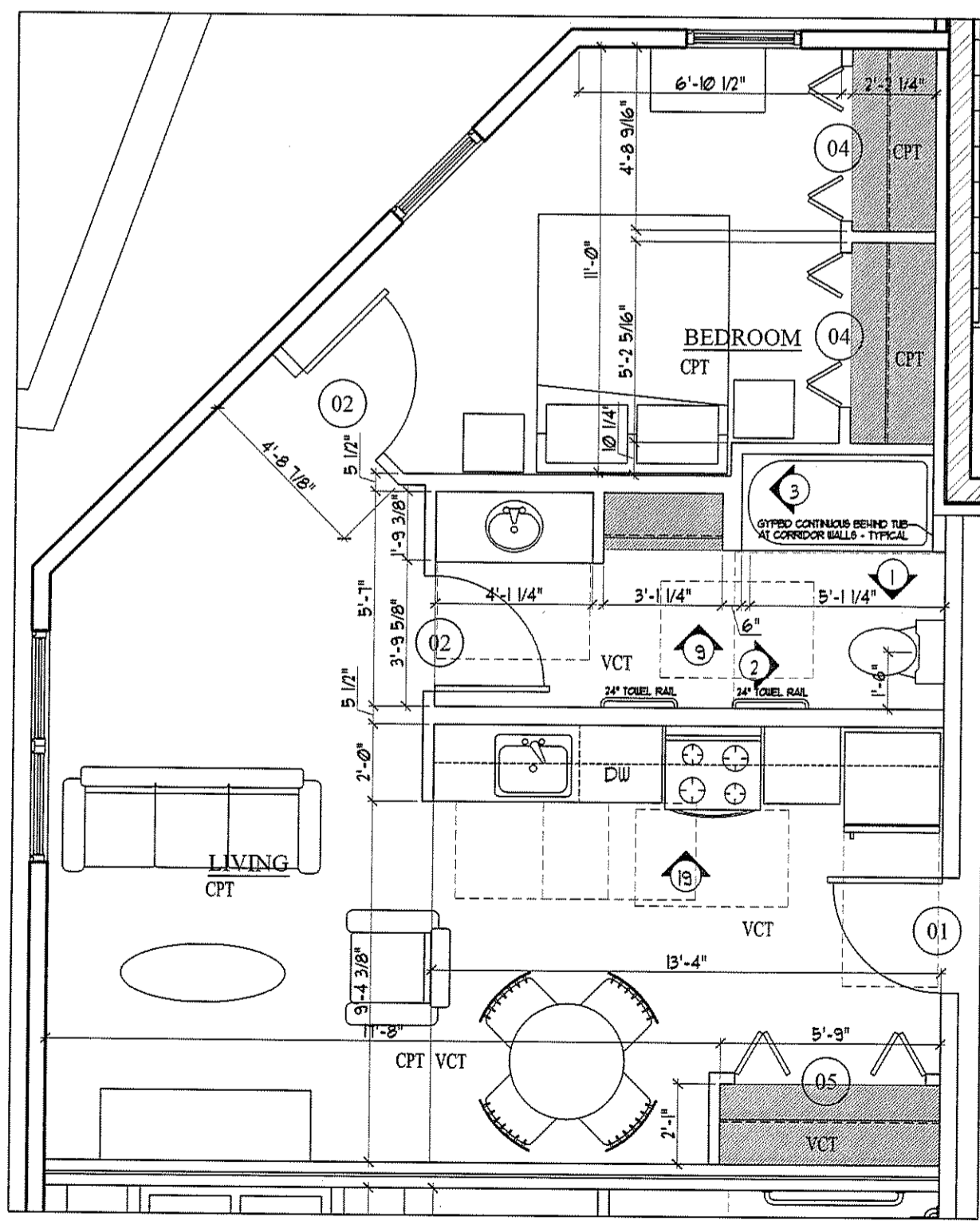
ELEVATION 15



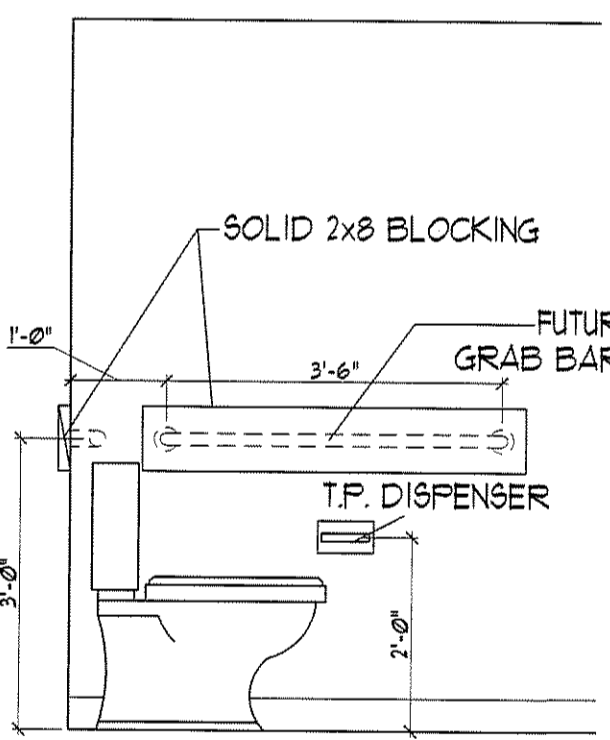
ELEVATION 16



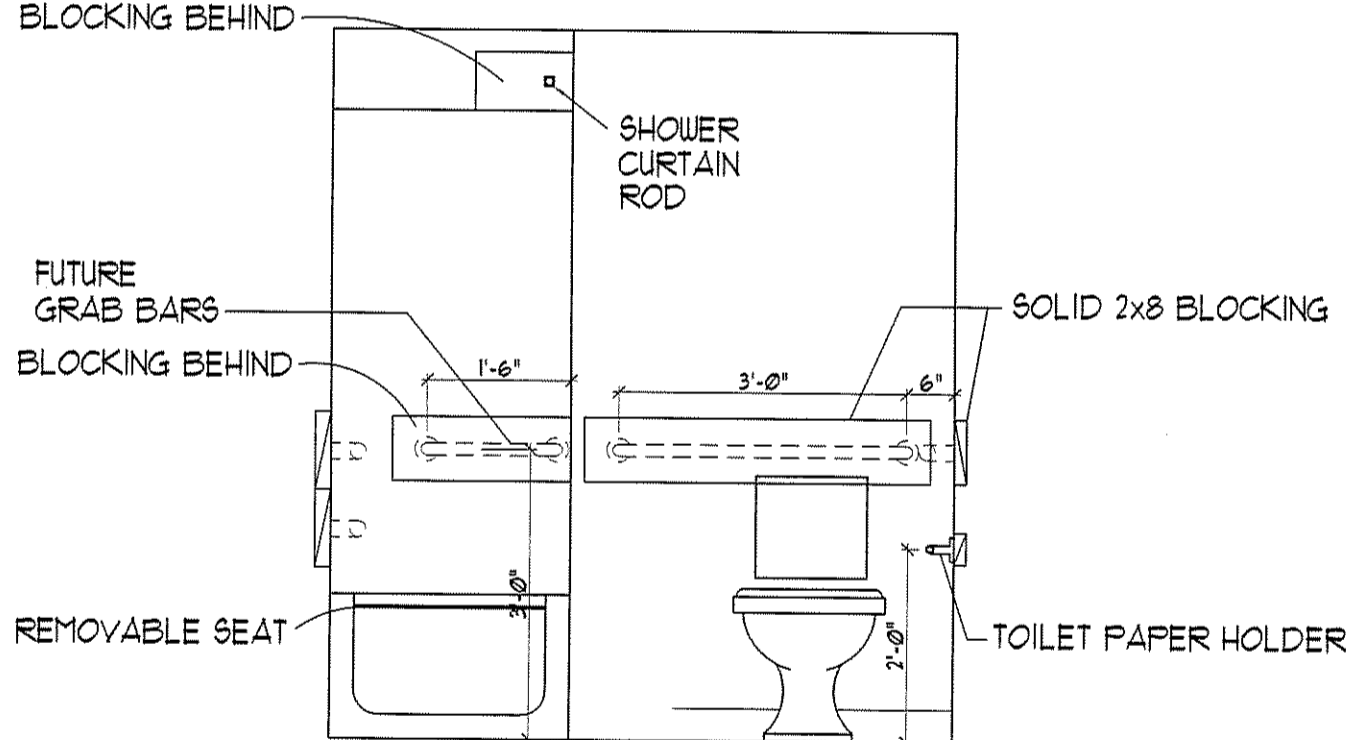
SECTION THROUGH CABINET NOT AGAINST FULL HEIGHT WALL
 - TYPICAL ALL GALLEY KITCHENS



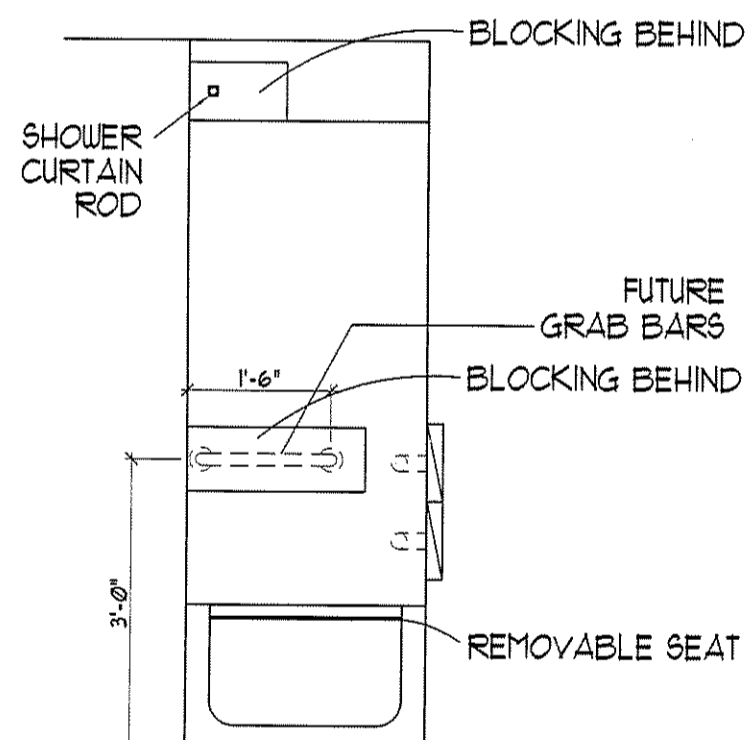
DWELLING UNIT TYPE 'J'
 SCALE: 1/4" = 1'-0"
 • DESIGNED TO MEET ANSI ITU - TYPE B
 • ONE-BEDROOM, ONE BATH (OPTION A)
 • 515 SQUARE FEET
 • STORAGE = 285 CU. FT.



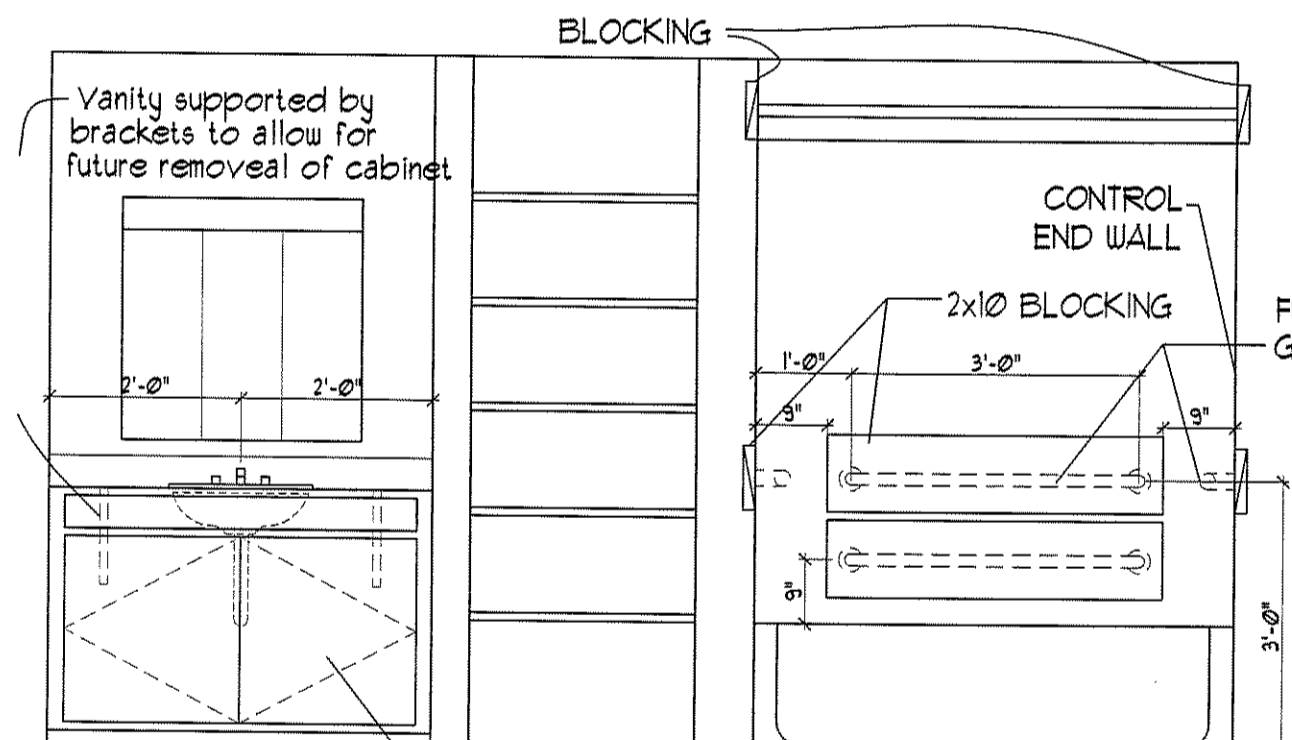
ELEVATION 1



ELEVATION 2

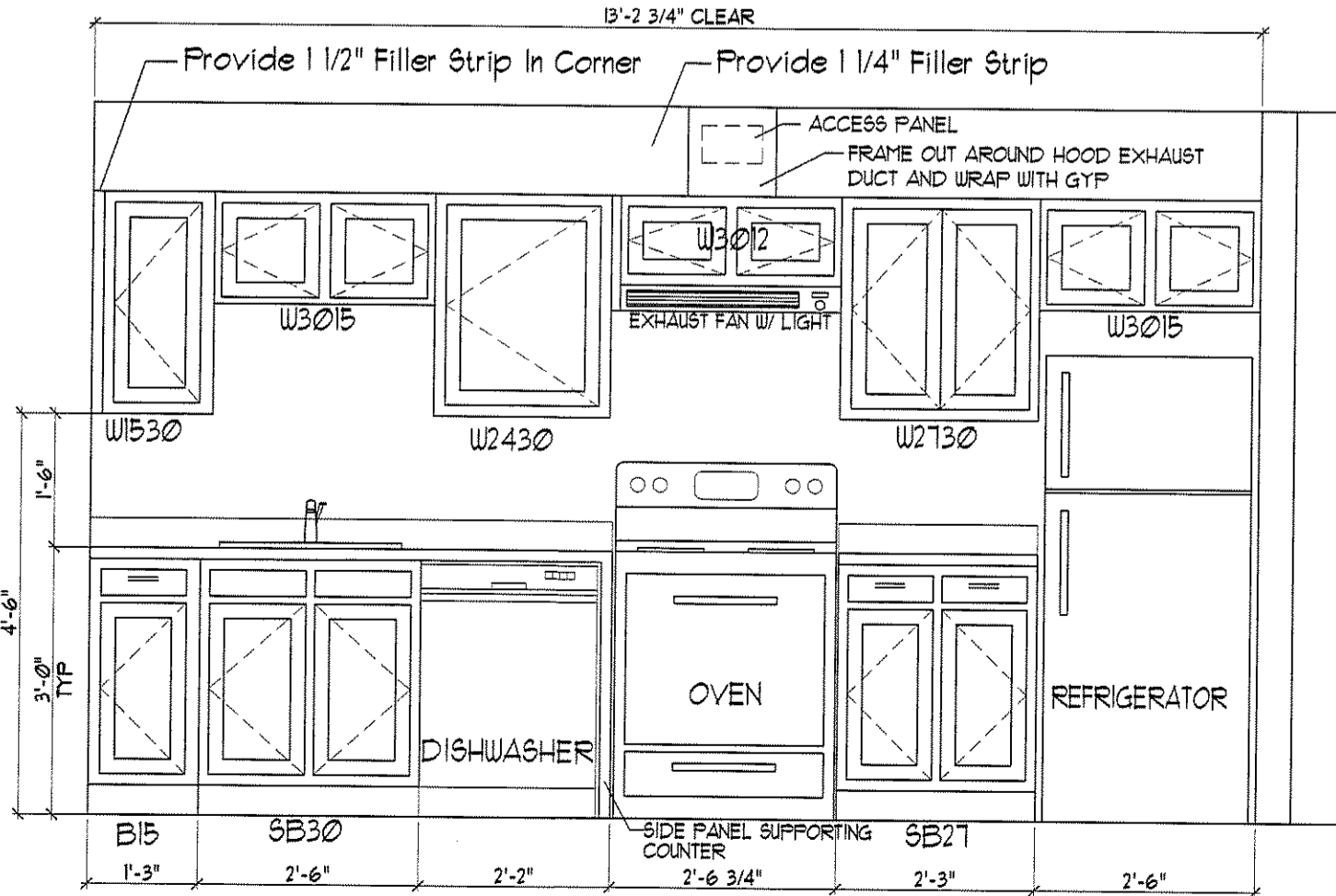


ELEVATION 3

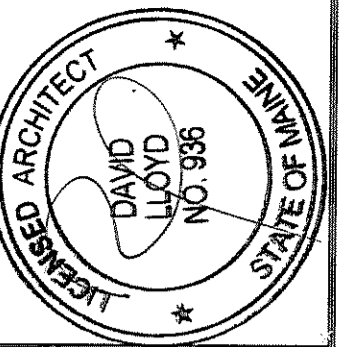
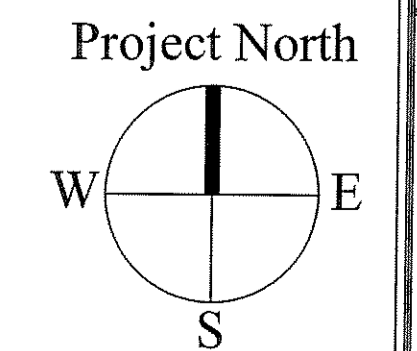


ELEVATION 9

Removable Vanity Front
 Floor to extend under cabinet
 Wall behind to be finished
 insulate piping



ELEVATION 19



OWNER:
53 DANFORTH STREET, LP
 C/O THE SZANTON COMPANY
 ONE CITY CENTER - 4TH FLOOR
 PORTLAND, ME 04101

ARCHETYPE, P.A.
 ARCHITECTS
 48 Union Wharf Portland, Maine 04101
 (207) 772-6022 Fax (207) 772-4056

53 DANFORTH
 53 DANFORTH STREET
 PORTLAND, MAINE

Project:
 Revisions:
 28 May 2008 - 50% MSHA Submittal
 1 July 2008 - 90% MSHA Submittal
 15 July 2008 - Pricing Set
 23 July 2008 - 100% MSHA Submittal

Date: 28 May 2008
 Scale: 1/4" = 1'-0"
ENLARGED UNIT PLANS

A6.05