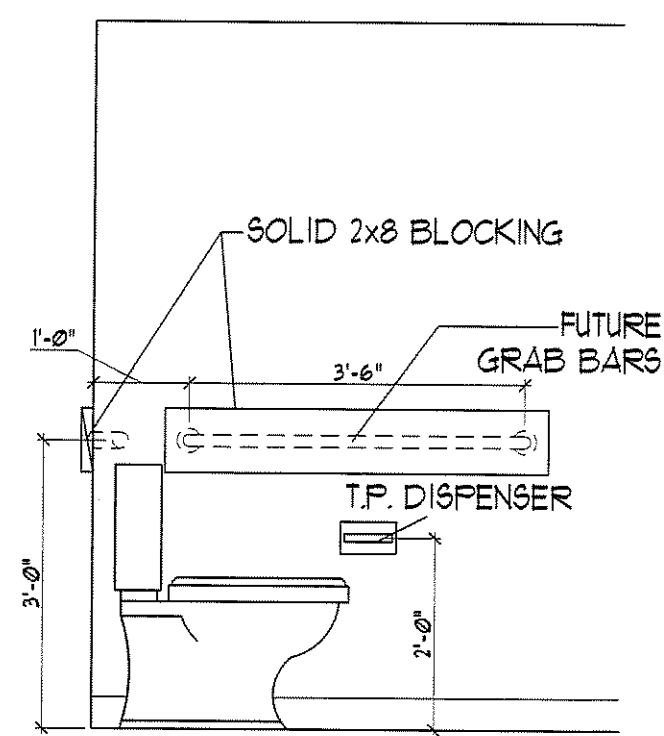
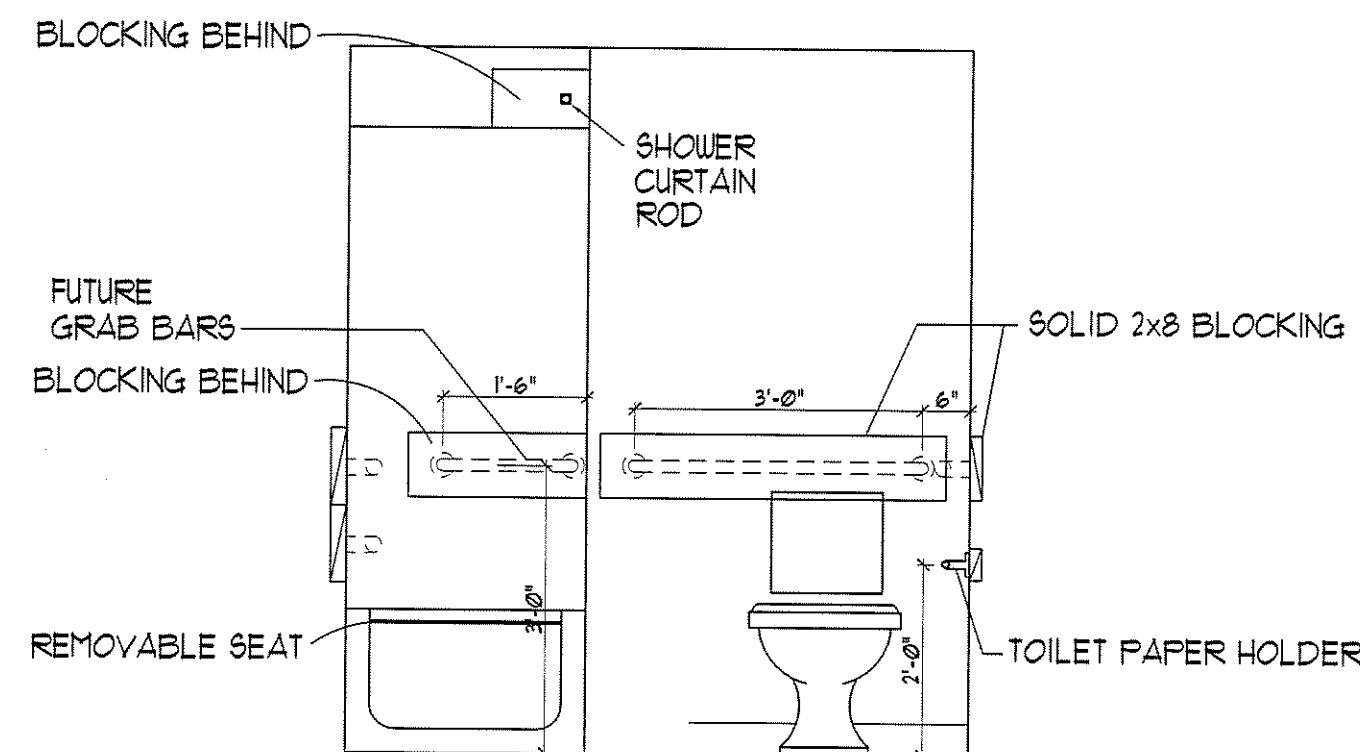


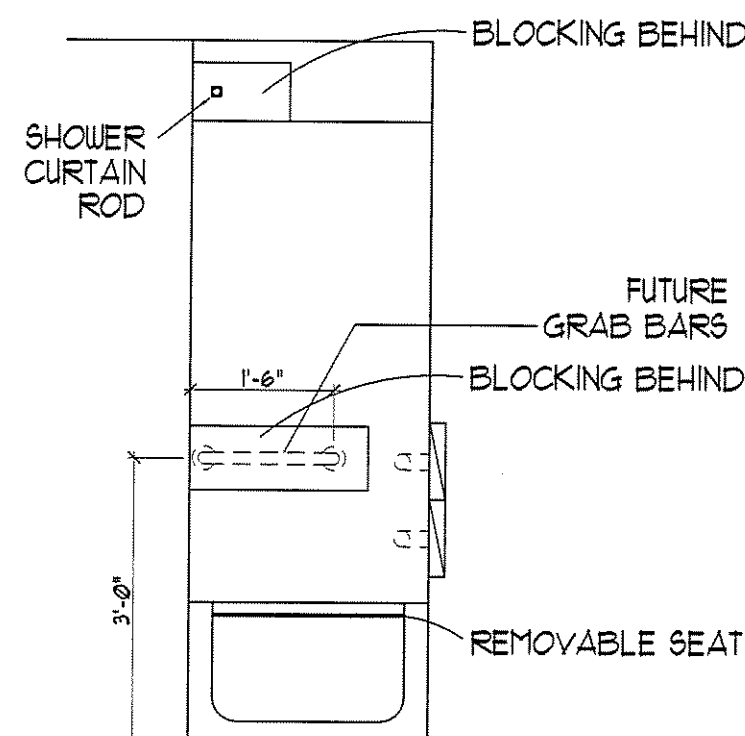
**G DWELLING UNIT TYPE 'G'**  
 SCALE: 1/4" = 1'-0"  
 • DESIGNED TO MEET ANSI ITU - TYPE B\*  
 • ONE-BEDROOM, ONE BATH (OPTION A)  
 • 585 SQUARE FEET  
 • STORAGE = 448 CU. FT.



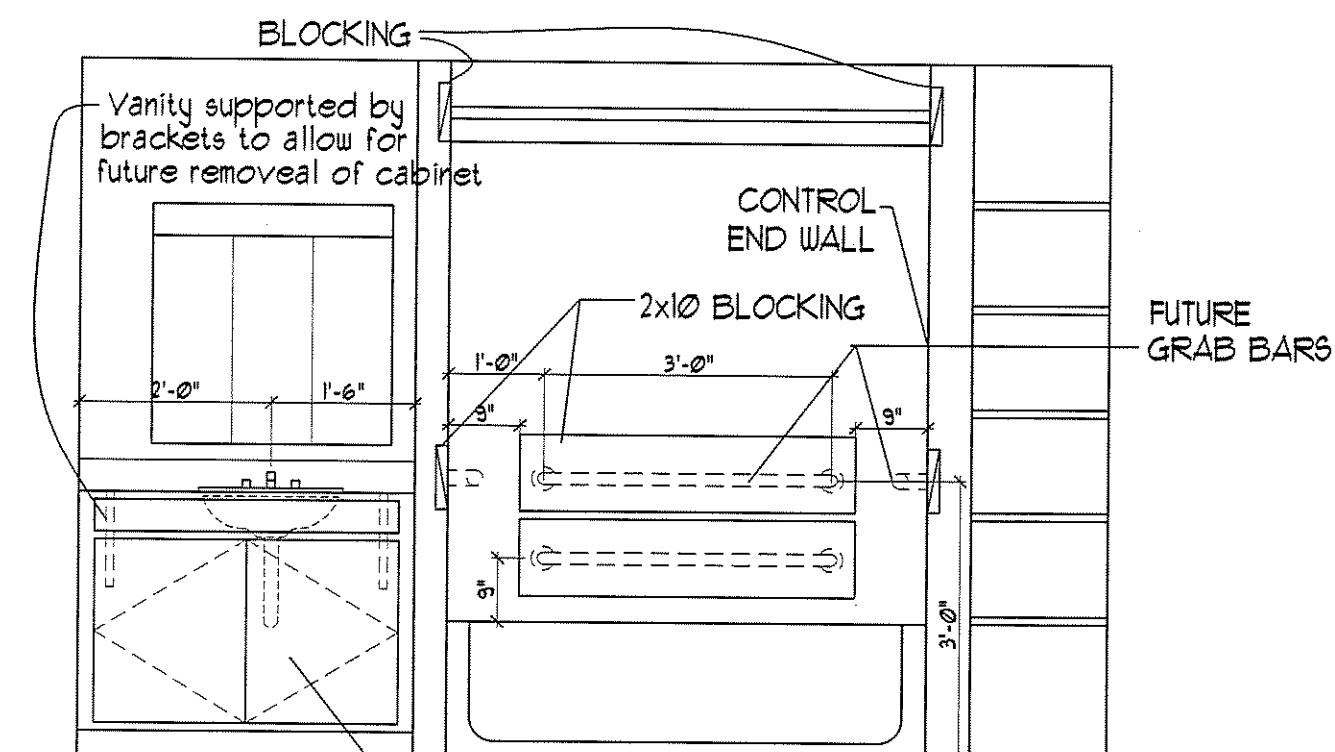
ELEVATION 1



ELEVATION 2

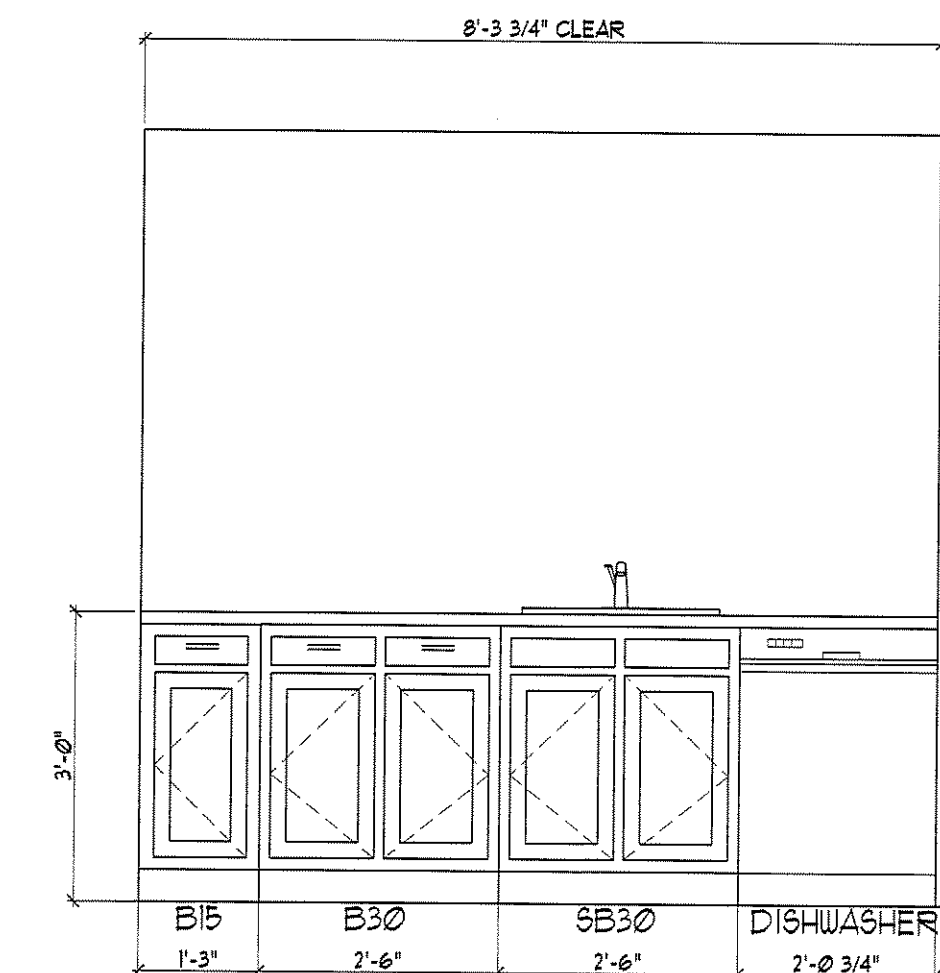


ELEVATION 3

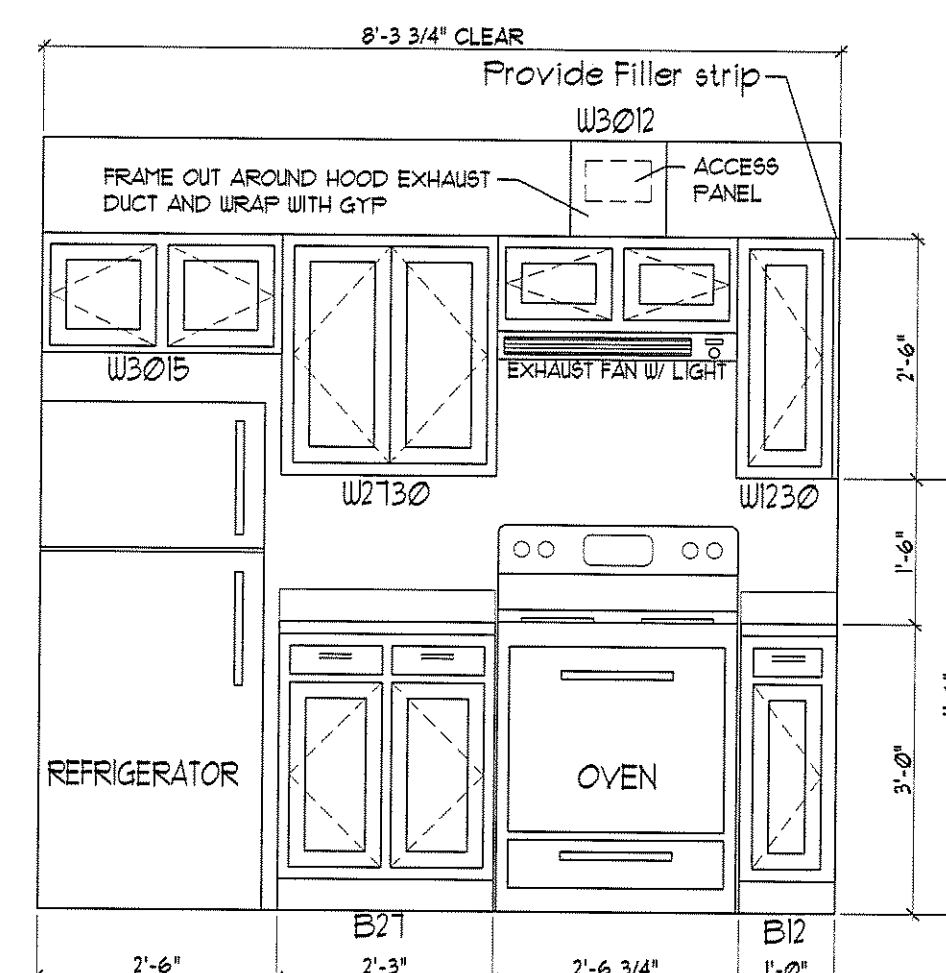


ELEVATION 7

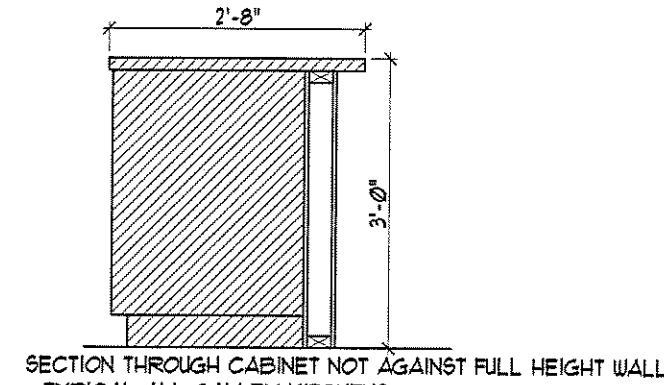
Removable Vanity Front  
 Floor to extend under cabinet  
 Wall behind to be finished  
 Insulate piping



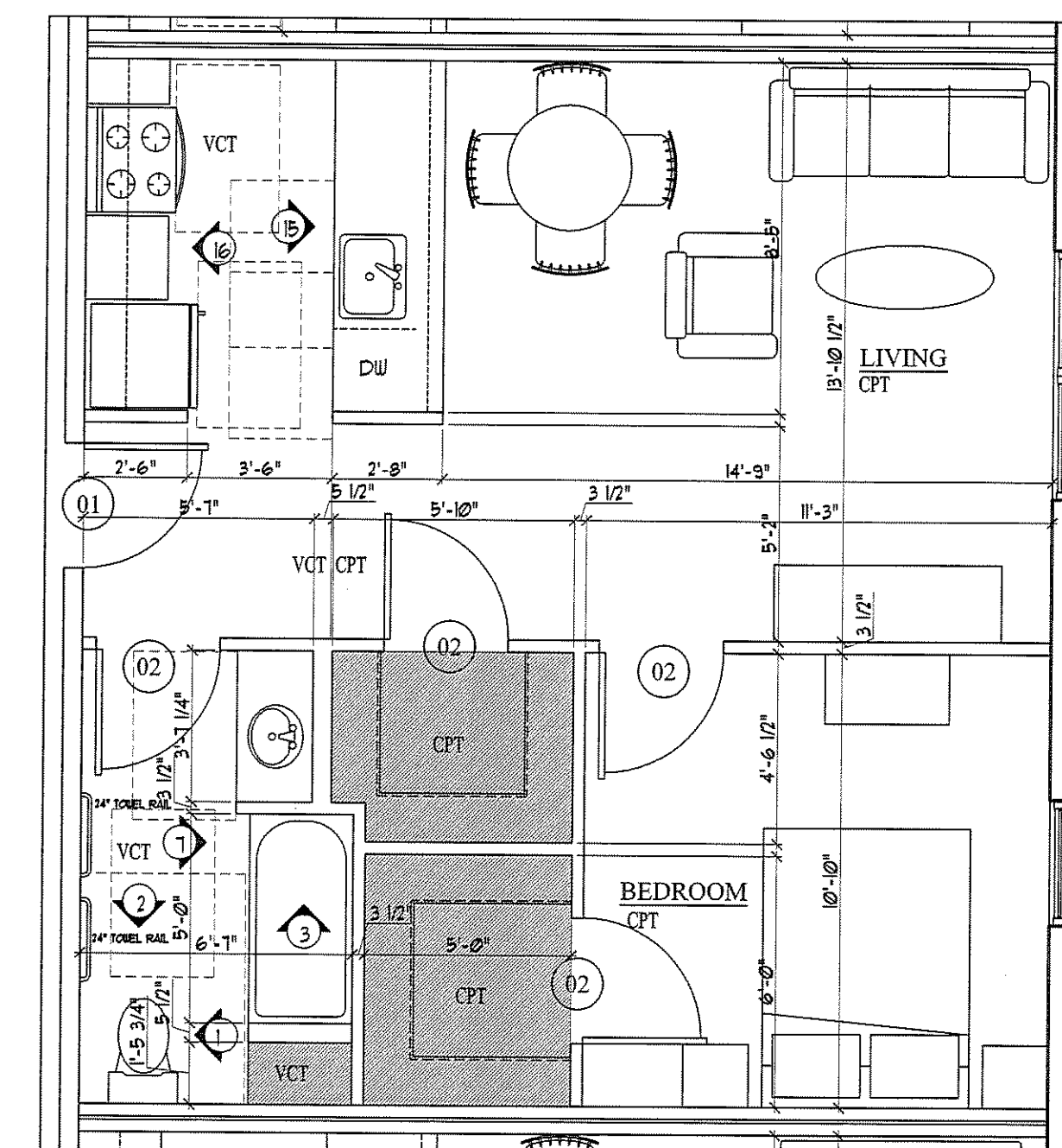
ELEVATION 15



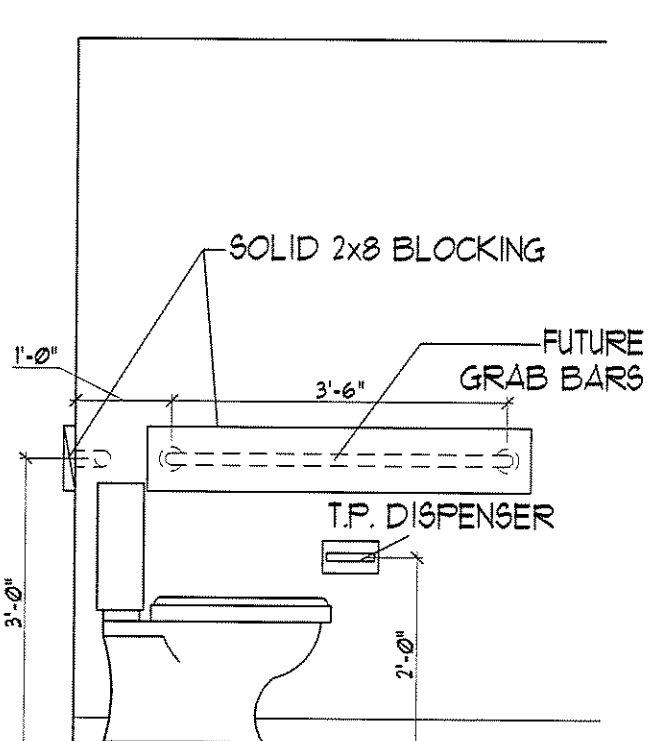
ELEVATION 16



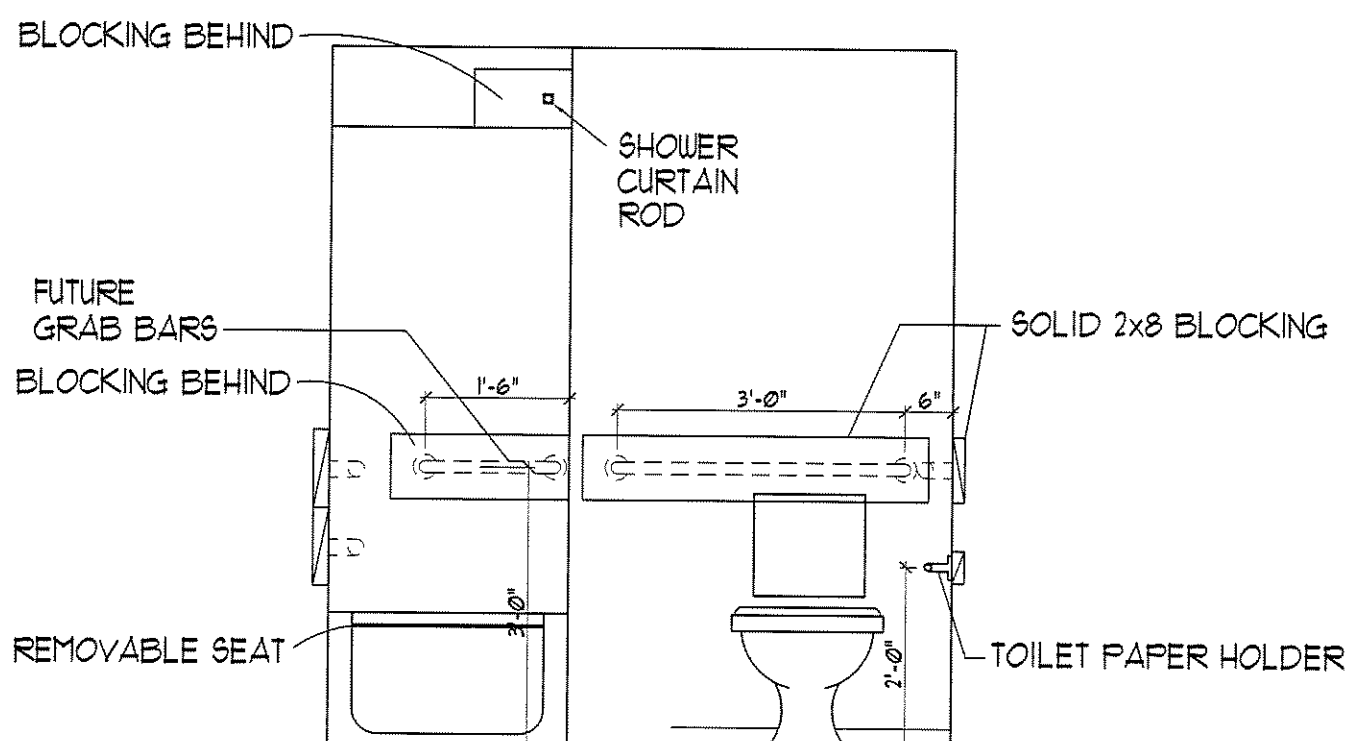
SECTION THROUGH CABINET NOT AGAINST FULL HEIGHT WALL  
 - TYPICAL ALL GALLEY KITCHENS



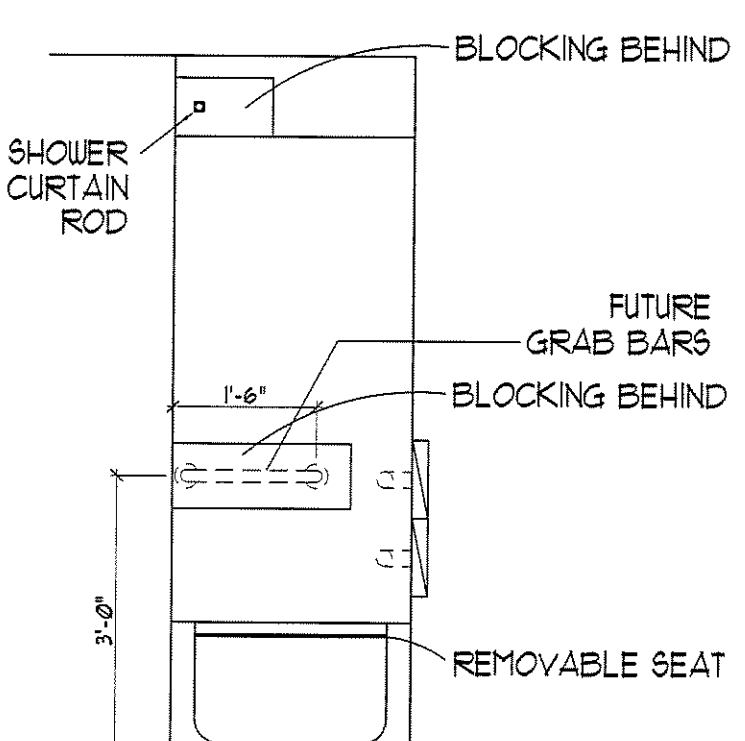
**H DWELLING UNIT TYPE 'H'**  
 SCALE: 1/4" = 1'-0"  
 • DESIGNED TO MEET ANSI ITU - TYPE B\*  
 • ONE-BEDROOM, ONE BATH (OPTION A)  
 • 585 SQUARE FEET  
 • STORAGE = 448 CU. FT.



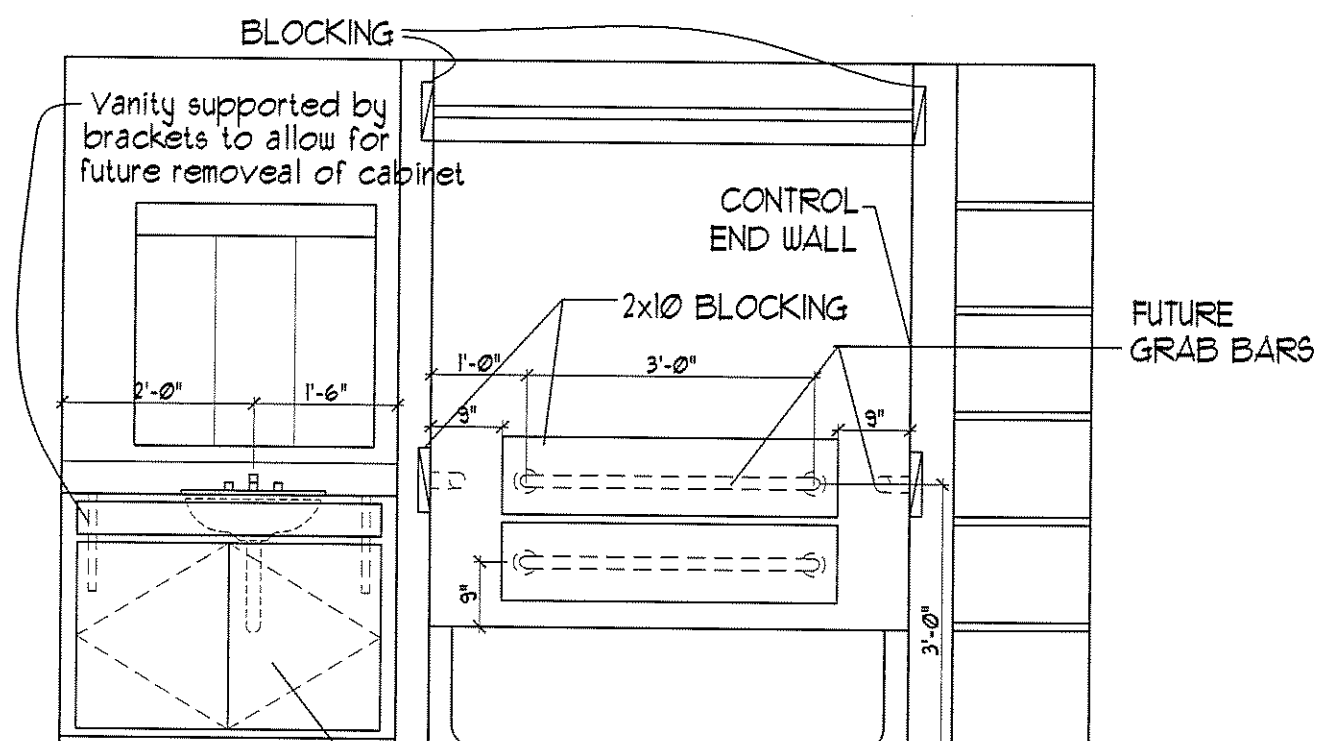
ELEVATION 1



ELEVATION 2

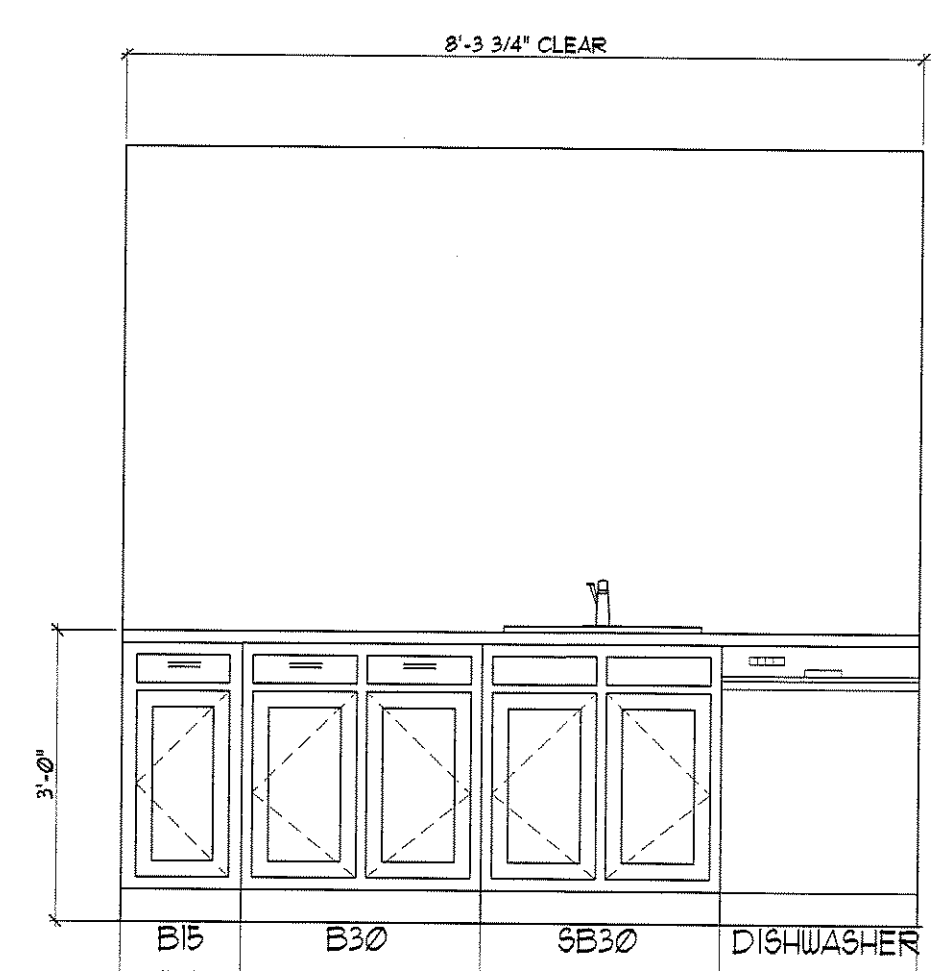


ELEVATION 3

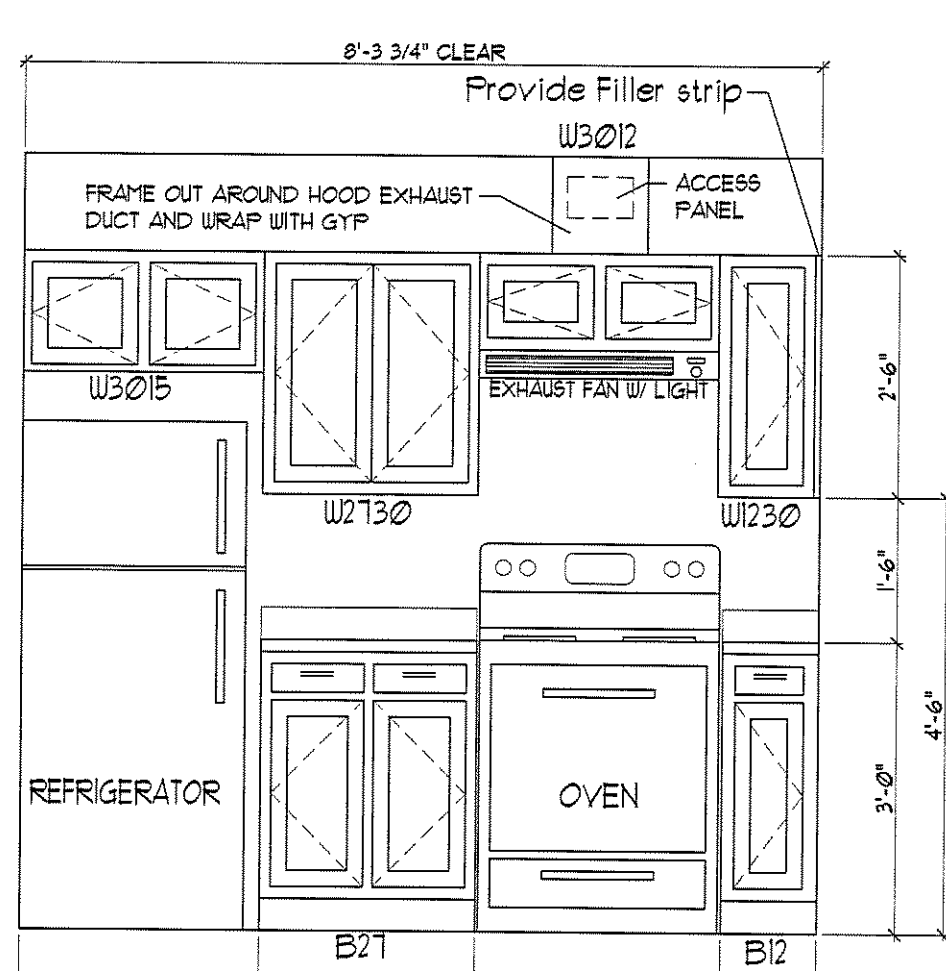


ELEVATION 7

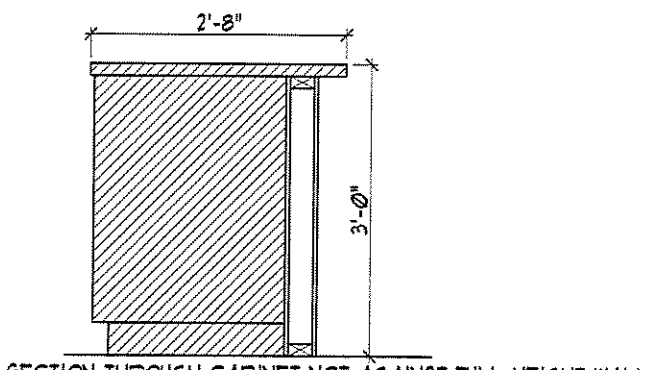
Removable Vanity Front  
 Floor to extend under cabinet  
 Wall behind to be finished  
 Insulate piping



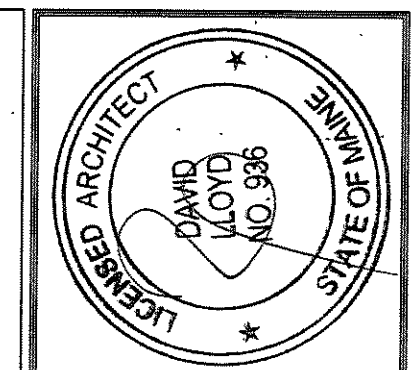
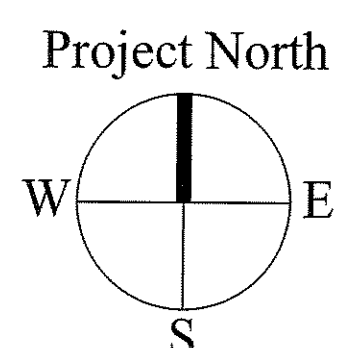
ELEVATION 15



ELEVATION 16



SECTION THROUGH CABINET NOT AGAINST FULL HEIGHT WALL  
 - TYPICAL ALL GALLEY KITCHENS



OWNER:  
**53 DANFORTH STREET, LP**  
 C/O THE SZANTON COMPANY  
 ONE CITY CENTER - 4TH FLOOR  
 PORTLAND, ME 04101

**ARCHETYPE, P.A.**  
 ARCHITECTS  
 48 Union Wharf Portland, Maine 04101  
 (207) 772-6022 Fax: (207) 772-4056

Project  
**53 DANFORTH**  
 53 DANFORTH STREET  
 PORTLAND, MAINE

Revisions:  
 28 May 2008 - 50% MSHA Submittal  
 1 July 2008 - 90% MSHA Submittal  
 15 July 2008 - Pricing Set  
 25 July 2008 - 100% MSHA Submittal

Date  
 28 May 2008  
 Scale  
 1/4" = 1'-0"  
**ENLARGED UNIT PLANS**

**A6.04**