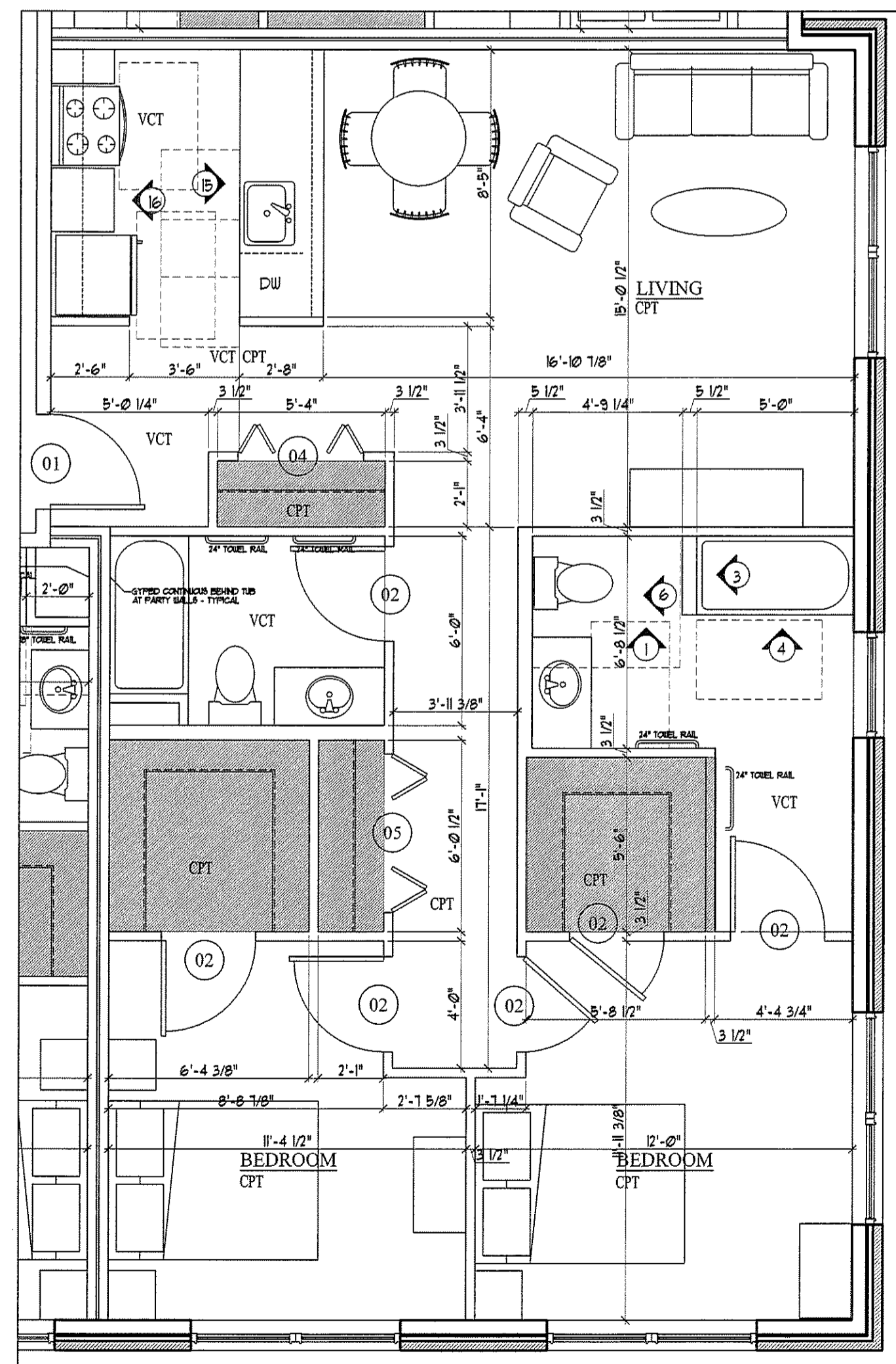


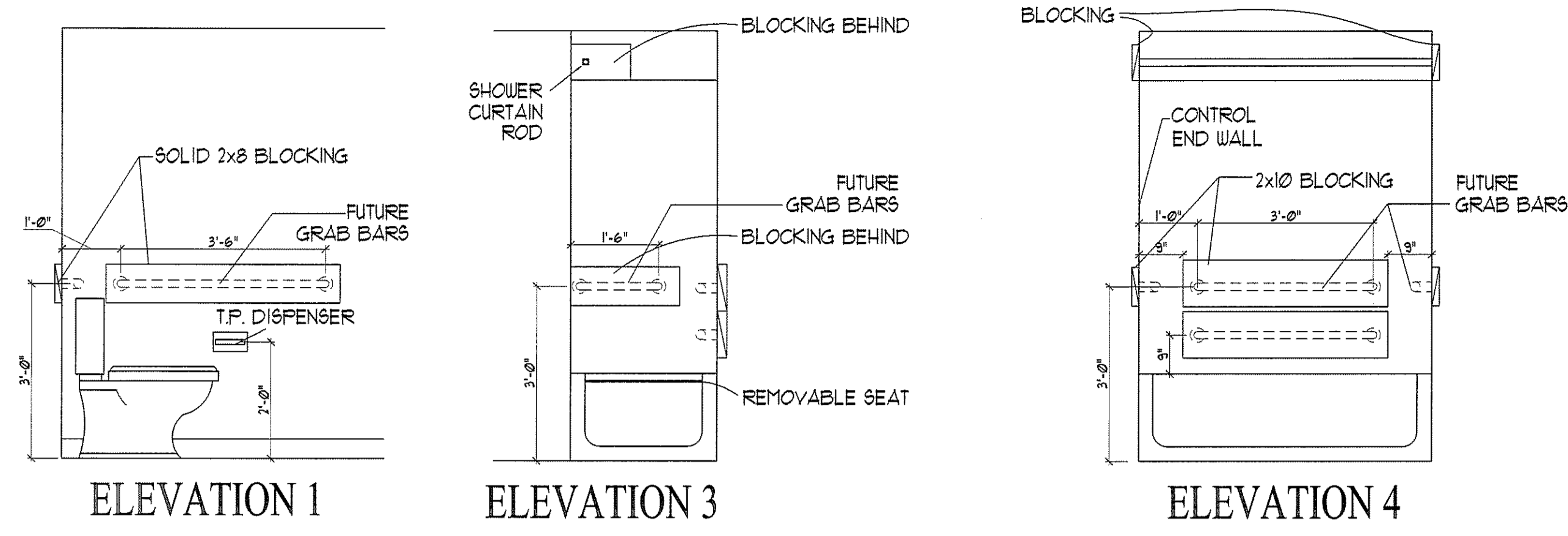
E DWELLING UNIT TYPE 'E'

- SCALE: 1/4" = 1'-0"
- DESIGNED TO MEET ANSI ITU - TYPE 'B'
 - ONE-BEDROOM, ONE BATH (OPTION A)
 - 581 SQUARE FEET
 - STORAGE = 350 CU. FT.

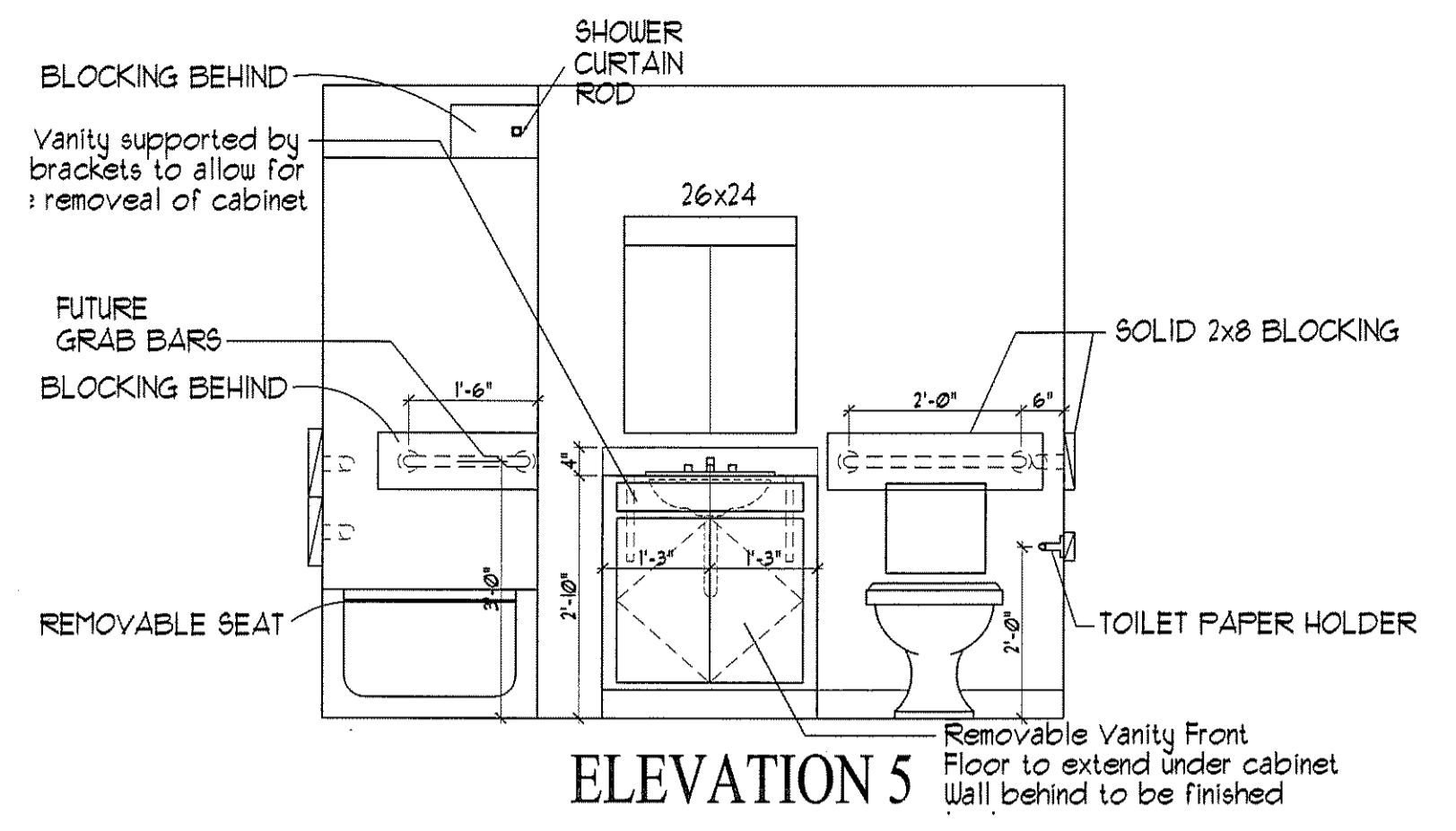


F DWELLING UNIT TYPE 'F'

- SCALE: 1/4" = 1'-0"
- DESIGNED TO MEET ANSI ITU - TYPE 'B'
 - TWO-BEDROOM, TWO BATH (1 BATH RM OPTION B, 1 BATH RM NOT ACCESSIBLE)
 - 611 SQUARE FEET
 - STORAGE = 126 CU. FT.

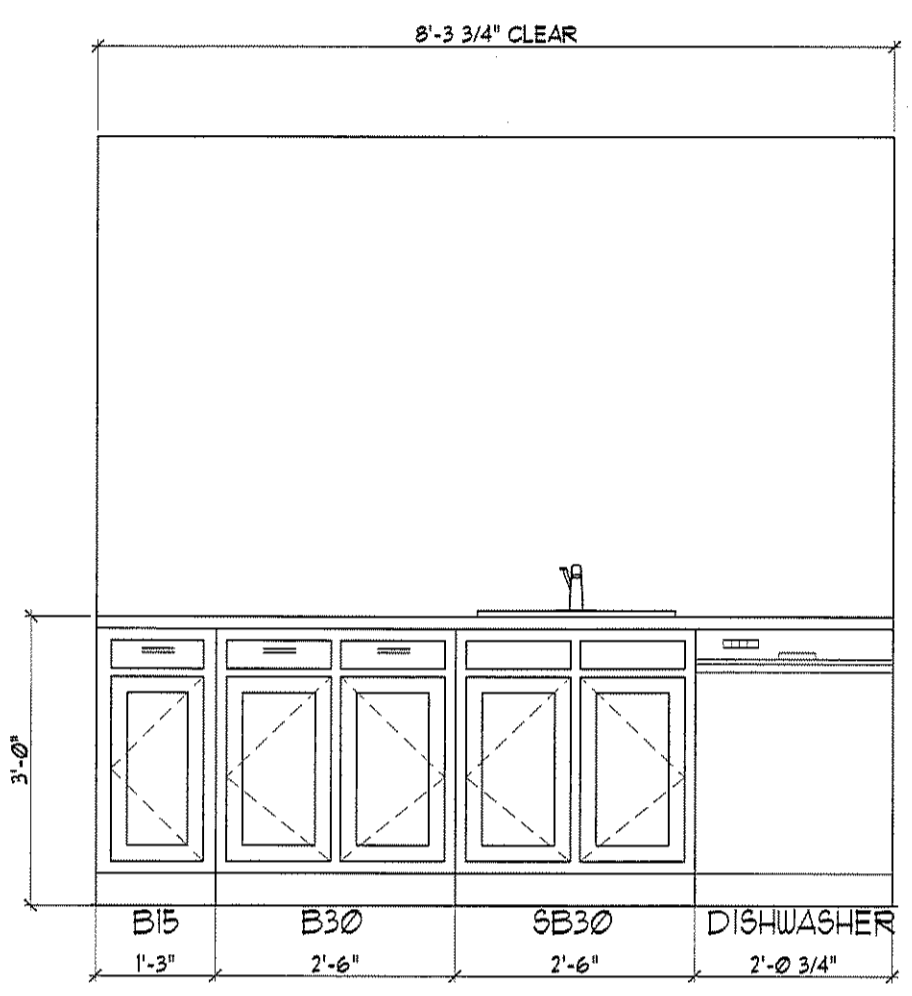


ELEVATION 1 ELEVATION 3 ELEVATION 4

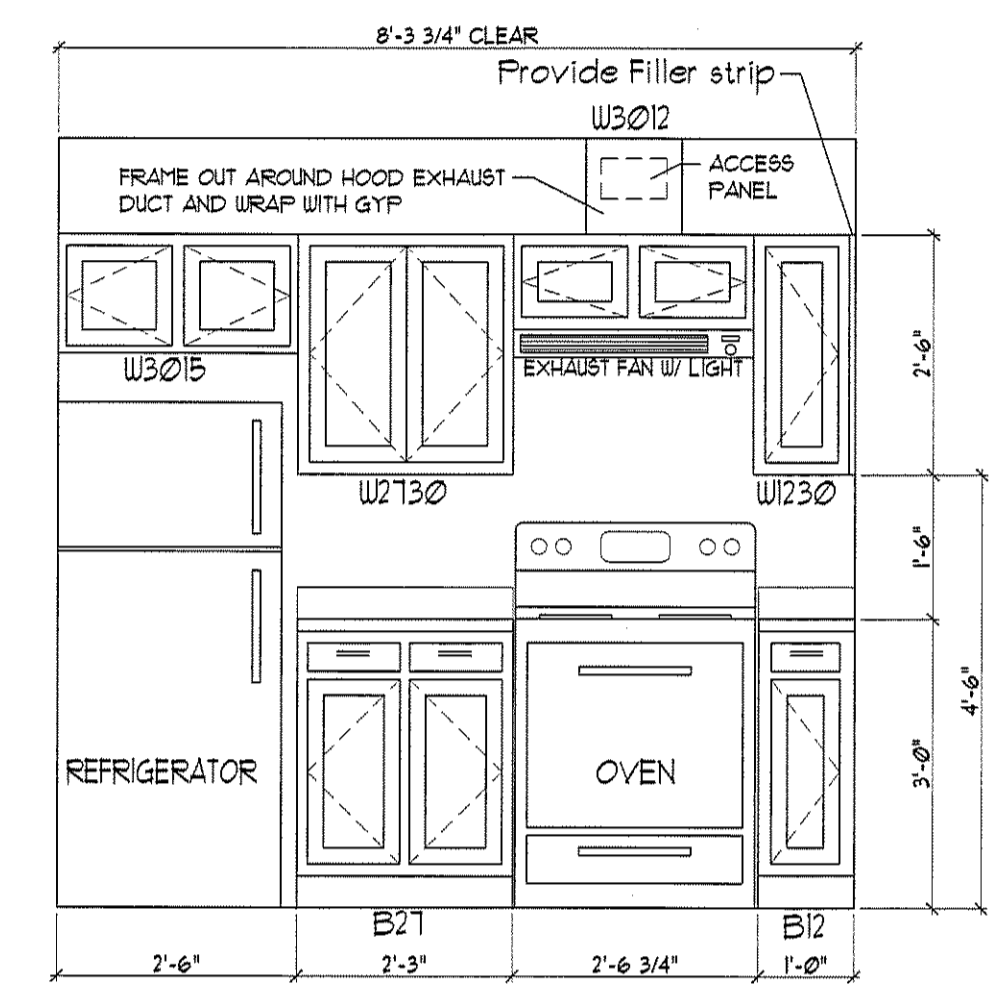


ELEVATION 5

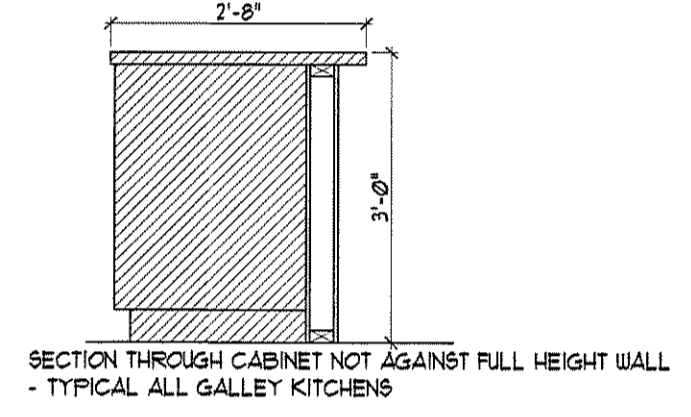
Removable Vanity Front
Floor to extend under cabinet
Wall behind to be finished



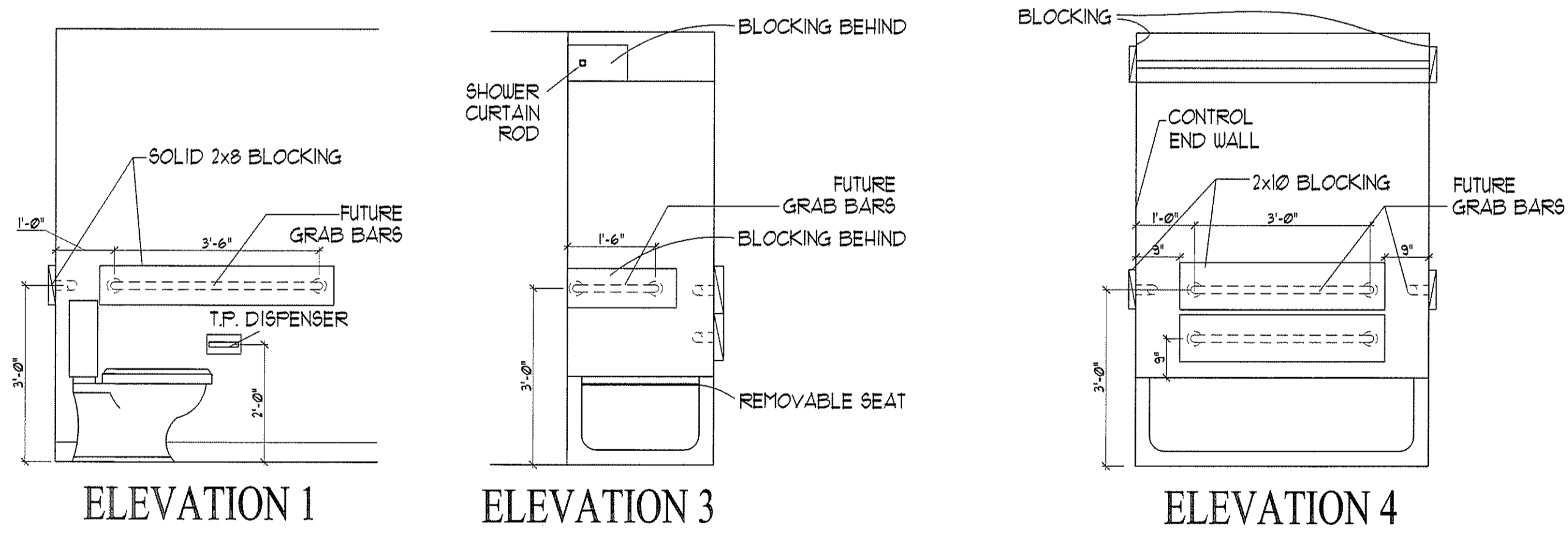
ELEVATION 15



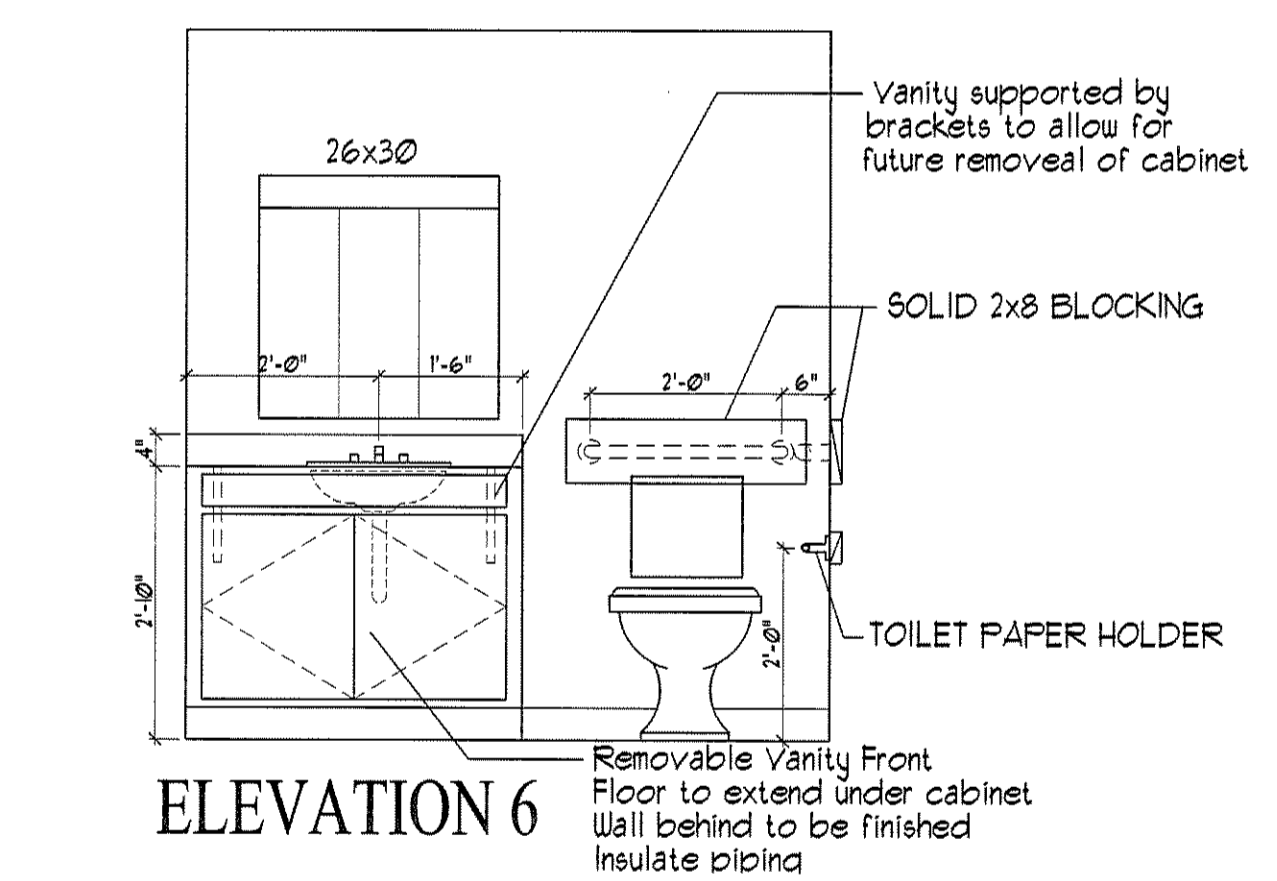
ELEVATION 16



SECTION THROUGH CABINET NOT AGAINST FULL HEIGHT WALL
- TYPICAL ALL GALLEY KITCHENS

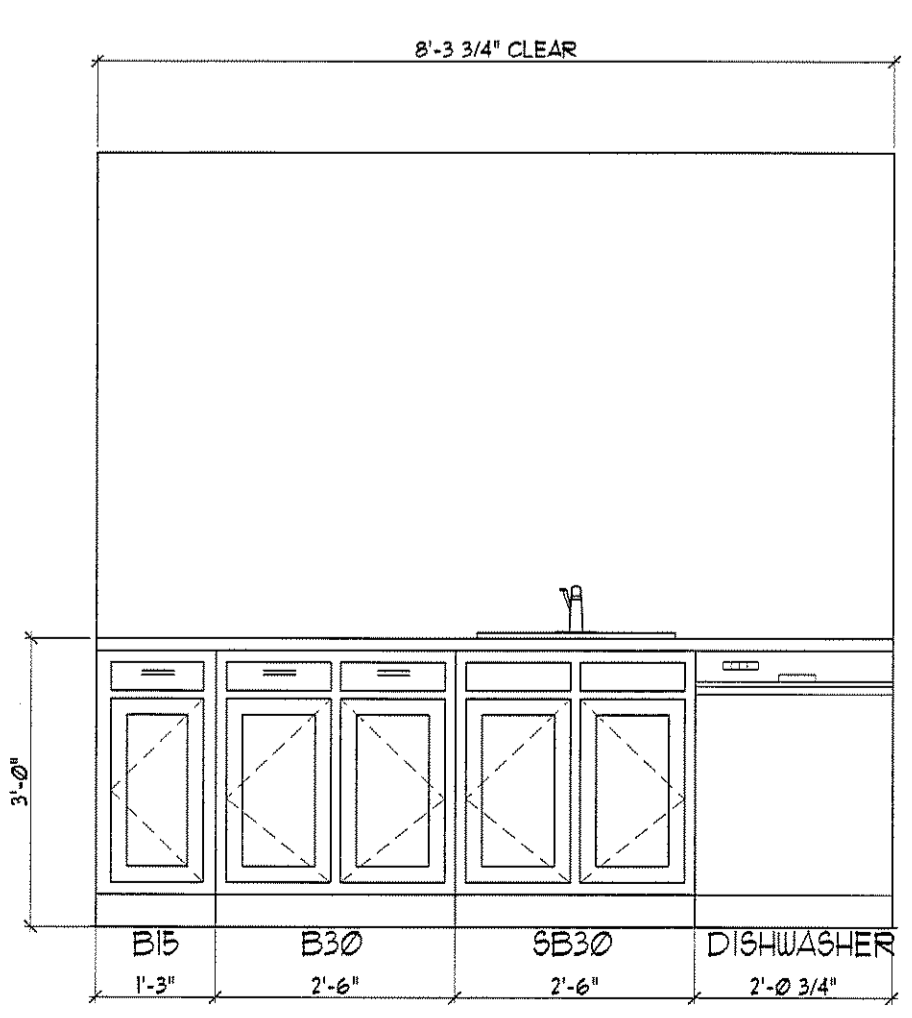


ELEVATION 1 ELEVATION 3 ELEVATION 4

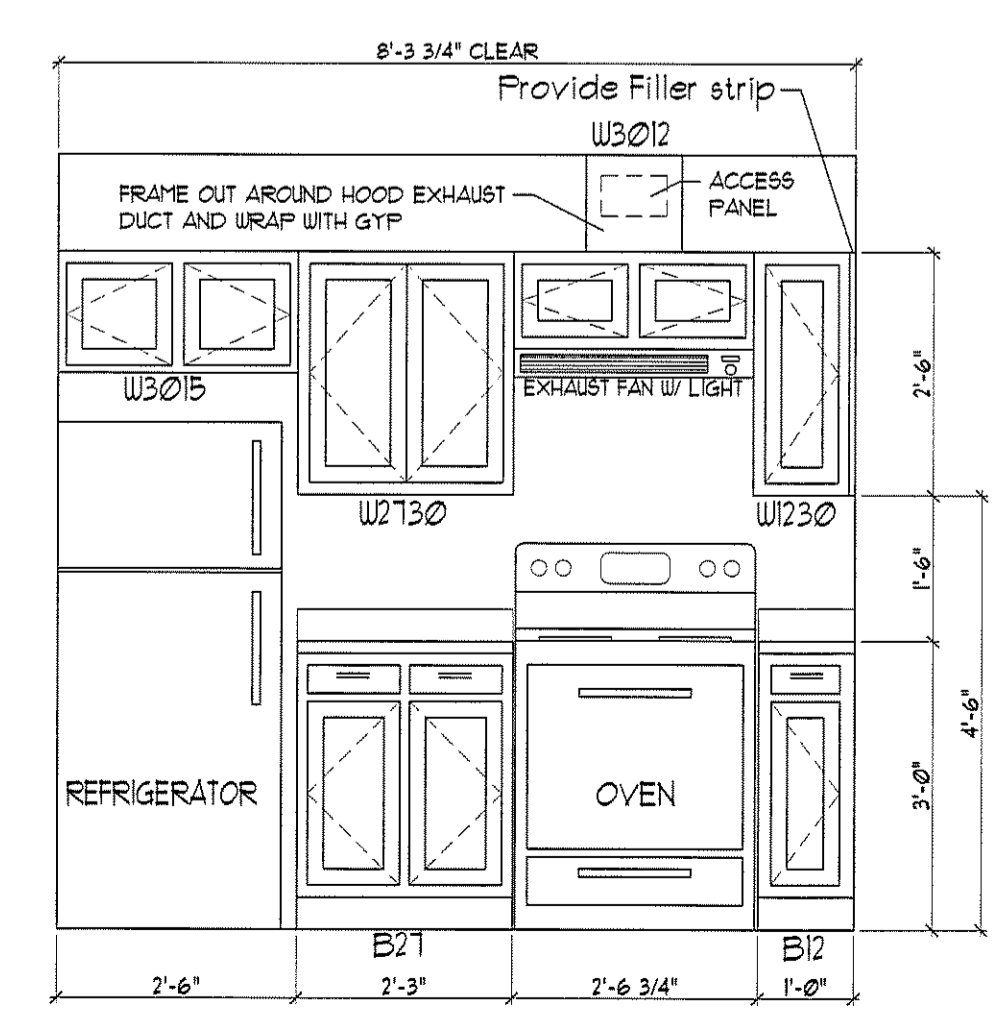


ELEVATION 6

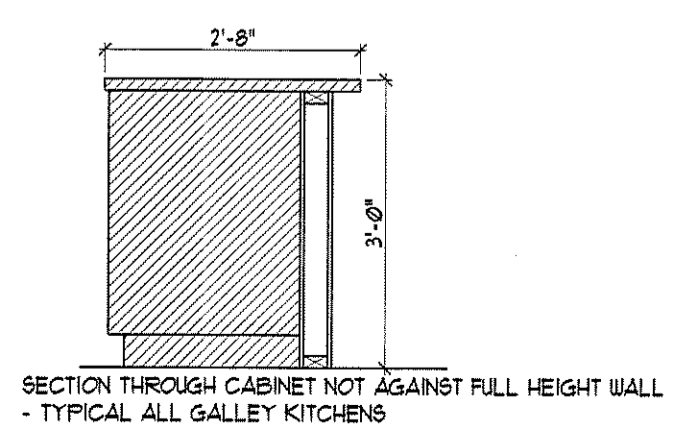
Removable Vanity Front
Floor to extend under cabinet
Wall behind to be finished
Insulate piping



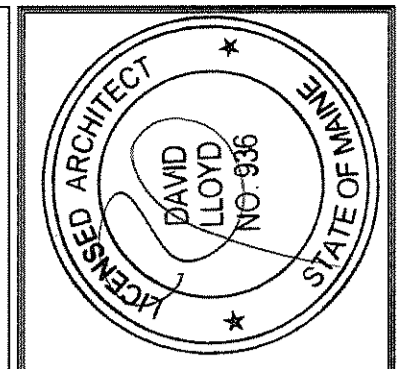
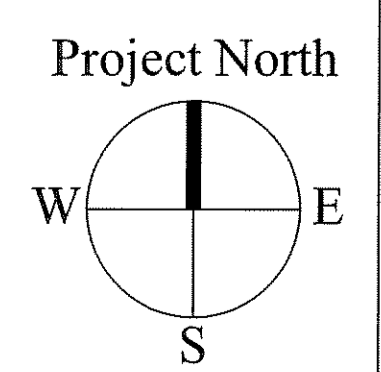
ELEVATION 15



ELEVATION 16



SECTION THROUGH CABINET NOT AGAINST FULL HEIGHT WALL
- TYPICAL ALL GALLEY KITCHENS



OWNER:
53 DANFORTH STREET, LP
C/O THE SZANTON COMPANY
ONE CITY CENTER - 4TH FLOOR
PORTLAND, ME 04101

ARCHETYPE, P.A.
ARCHITECTS
48 Union Wharf Portland, Maine 04101
(207) 772-6022 Fax (207) 772-4056

Project:
53 DANFORTH
53 DANFORTH STREET
PORTLAND, MAINE

Revisions:

28 May 2008	- 50% MSHA Submittal
15 July 2008	- 90% MSHA Submittal
15 July 2008	- Pricing Set
25 July 2008	- 100% MSHA Submittal

Date: 28 May 2008
Scale: 1/4" = 1'-0"
ENLARGED UNIT PLANS

A6.03