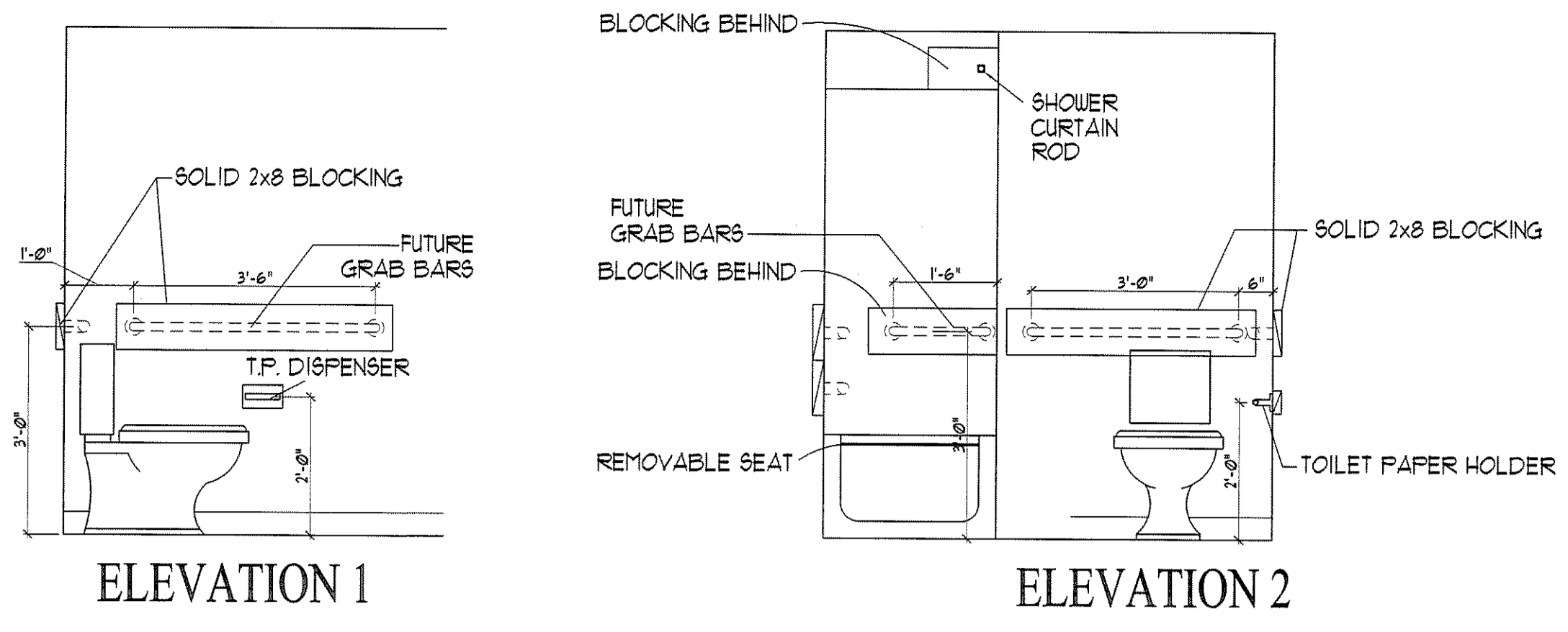
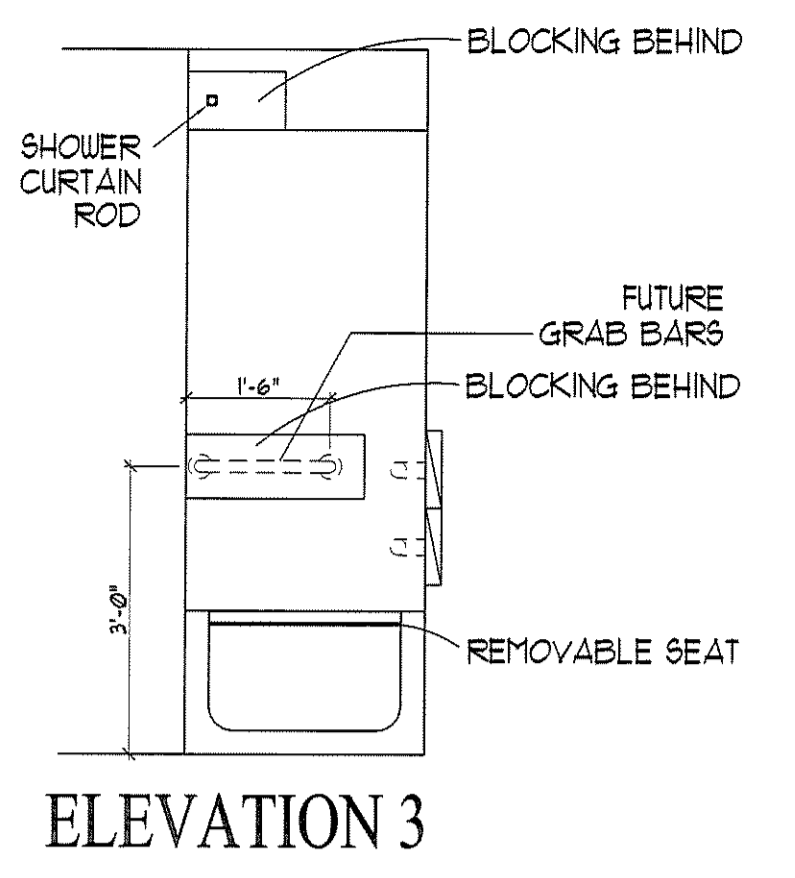


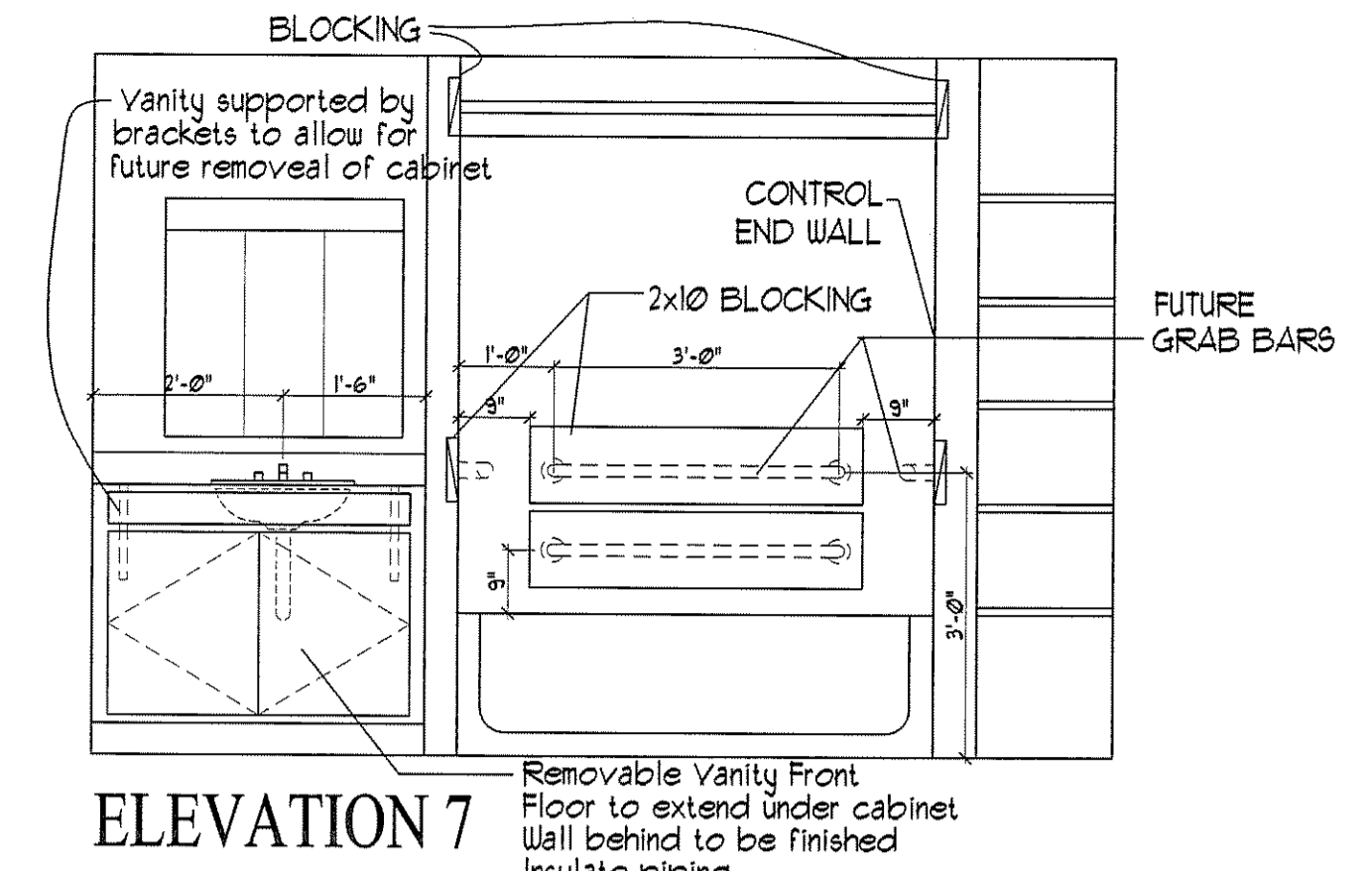
C DWELLING UNIT TYPE 'C'
 SCALE: 1/4" = 1'-0"
 • DESIGNED TO MEET ANSI ITU - TYPE B*
 • ONE-BEDROOM, ONE BATH (OPTION A)
 • 336 SQUARE FEET
 • STORAGE = 448 CU. FT.



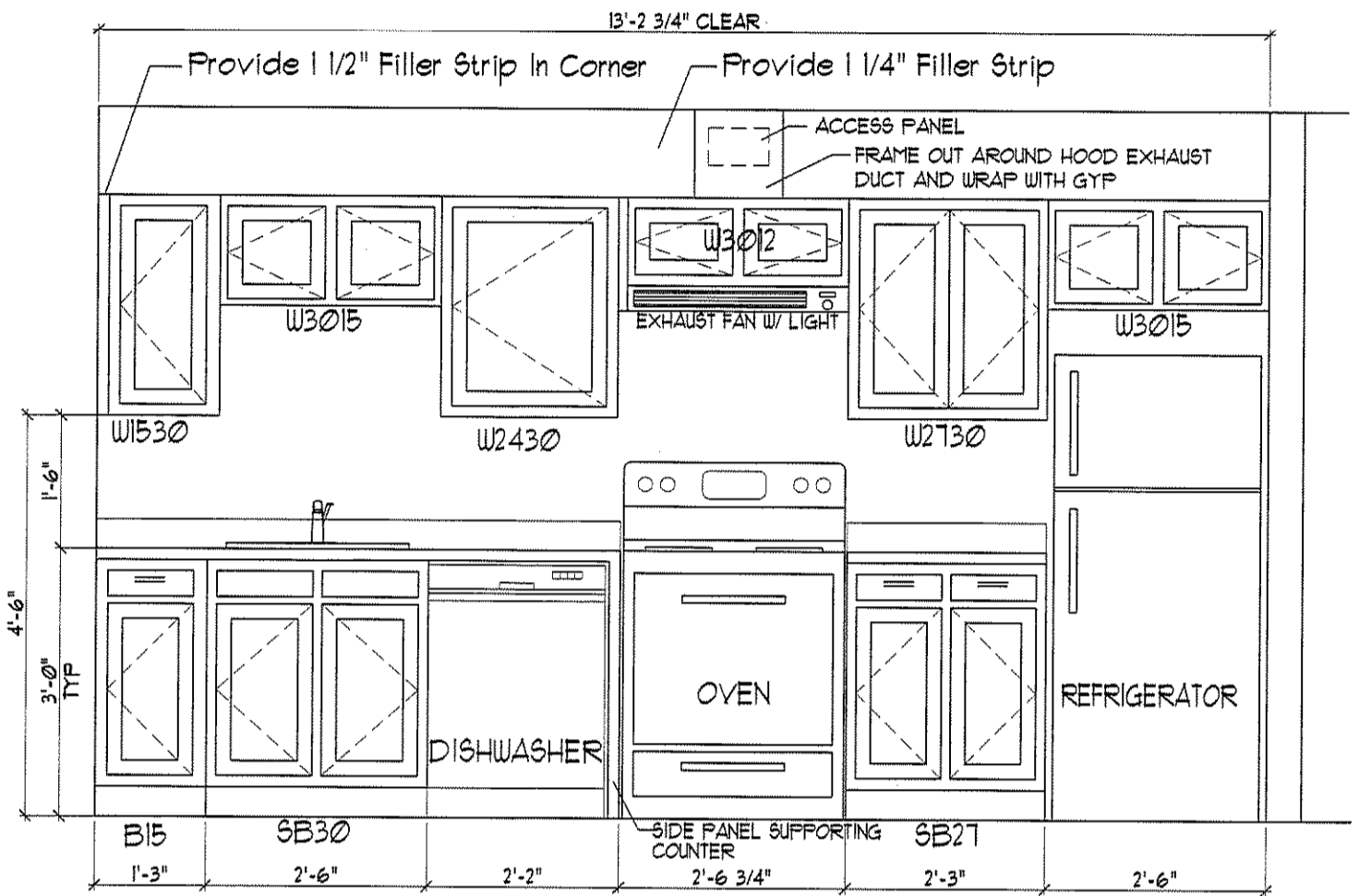
ELEVATION 1 **ELEVATION 2**



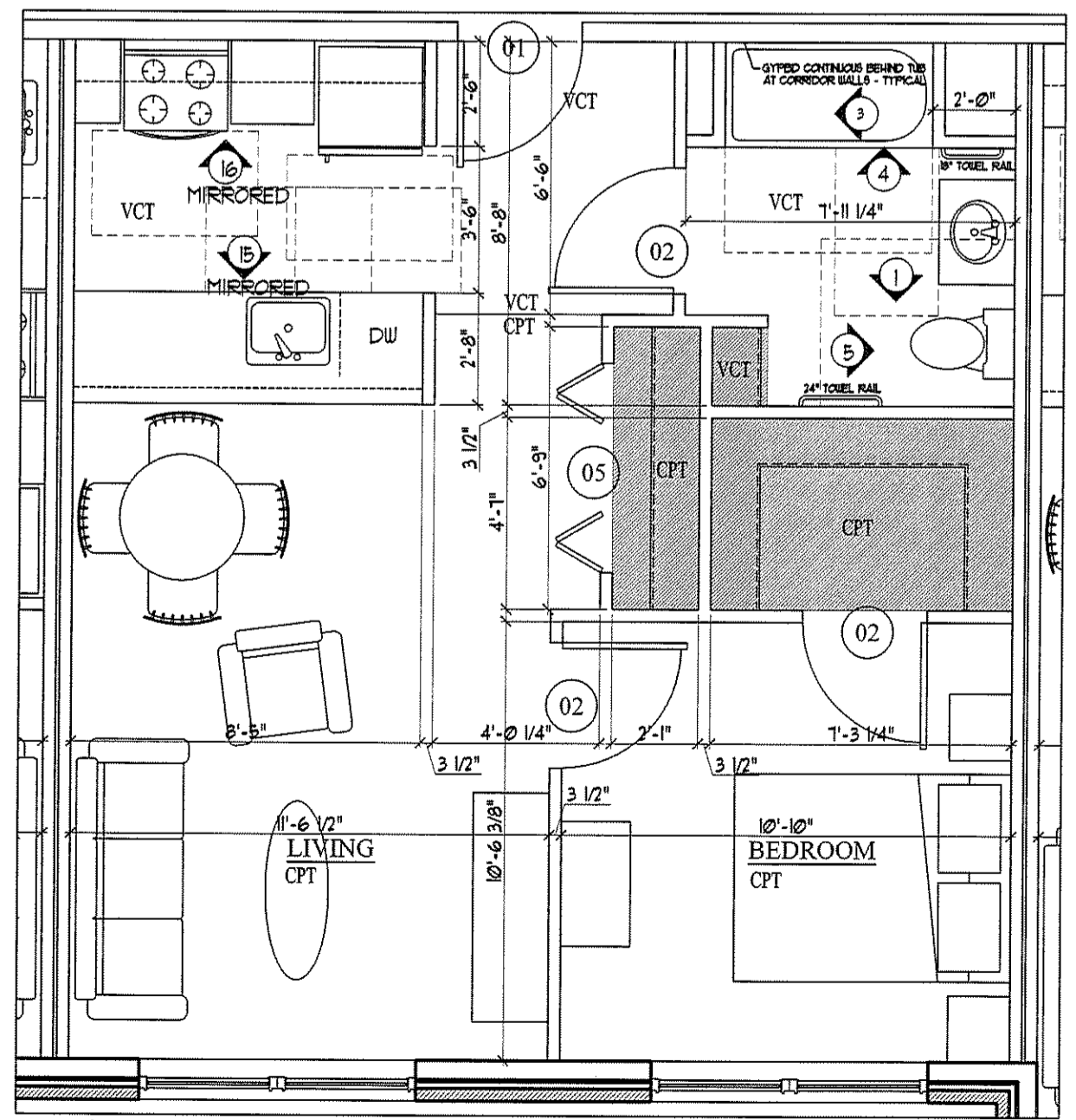
ELEVATION 3



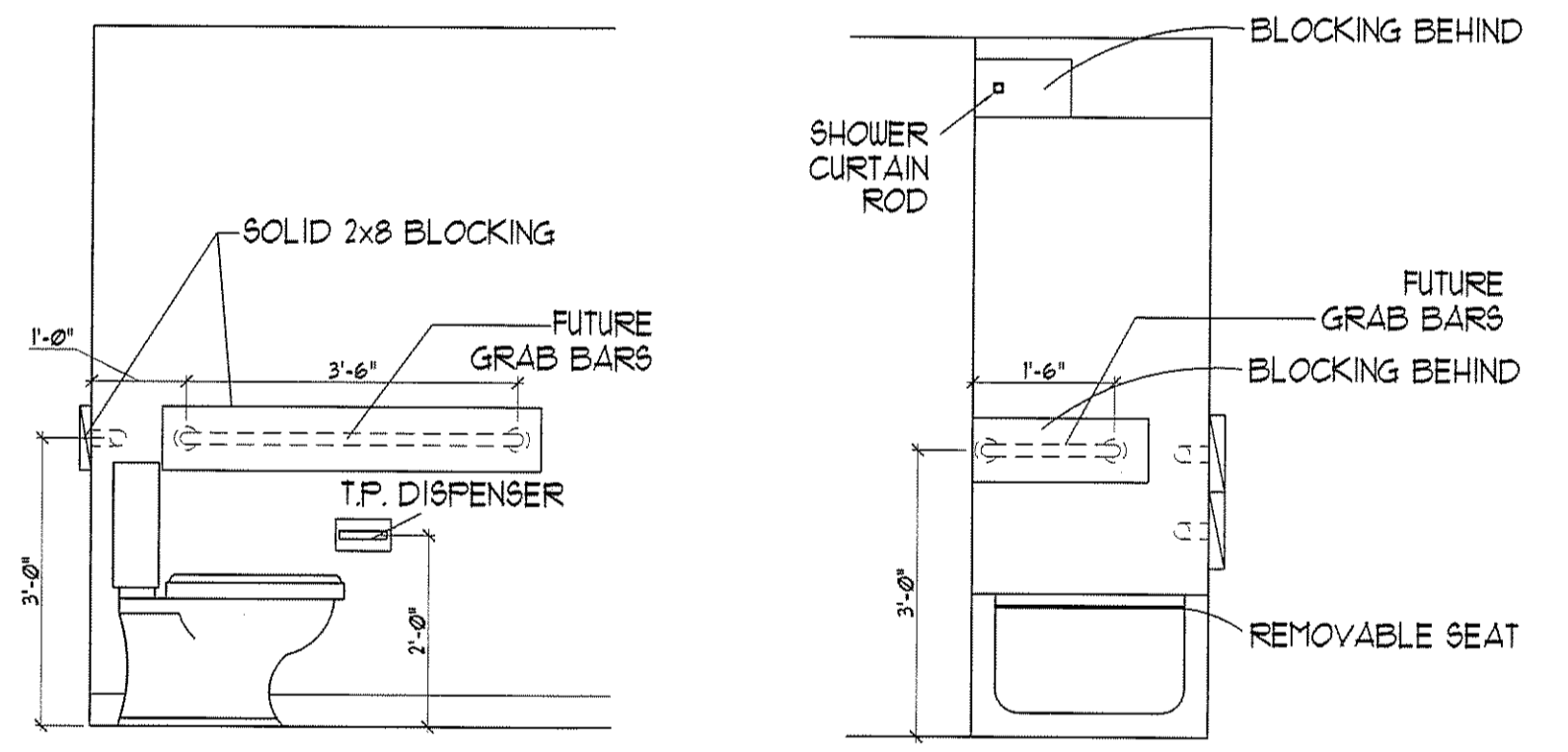
ELEVATION 7



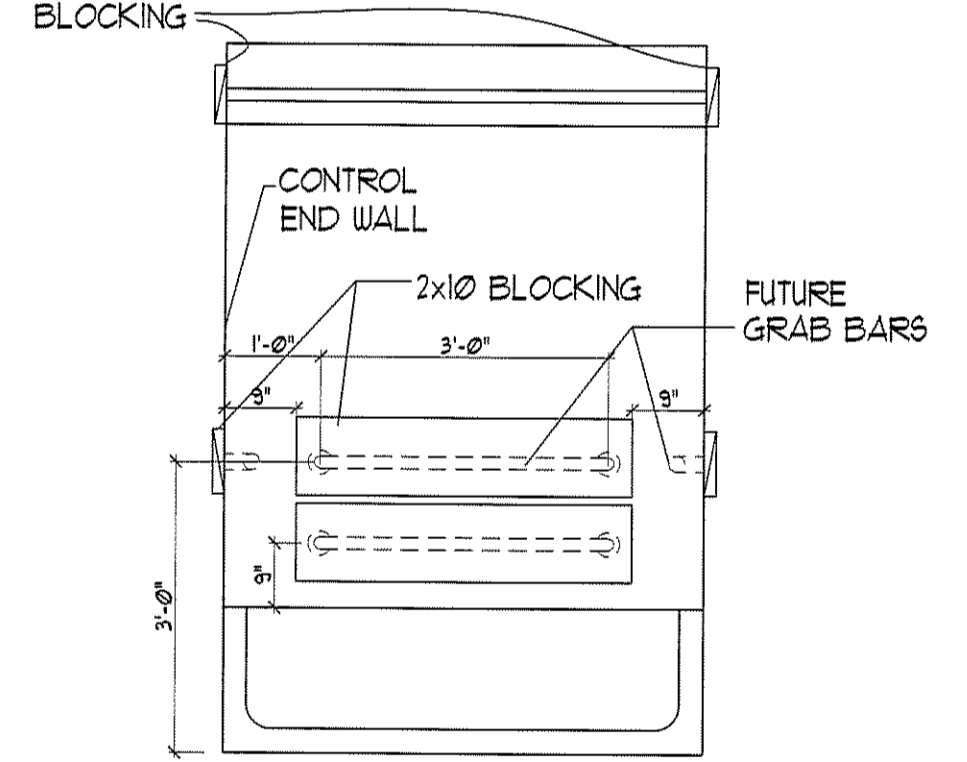
ELEVATION 19



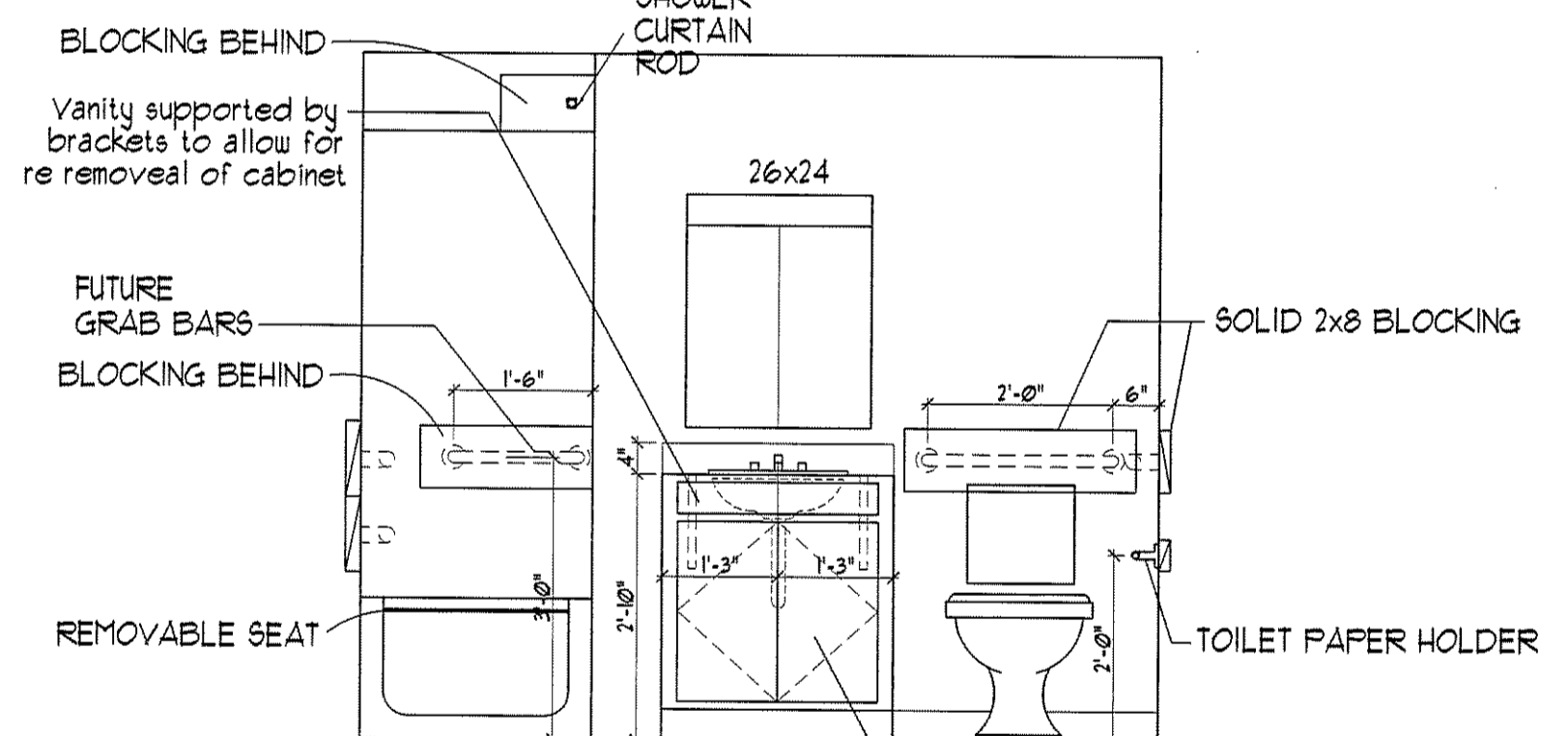
D DWELLING UNIT TYPE 'D'
 SCALE: 1/4" = 1'-0"
 • DESIGNED TO MEET ANSI ITU - TYPE B*
 • ONE-BEDROOM, ONE BATH
 • 357 SQUARE FEET
 • STORAGE = 316 CU. FT.



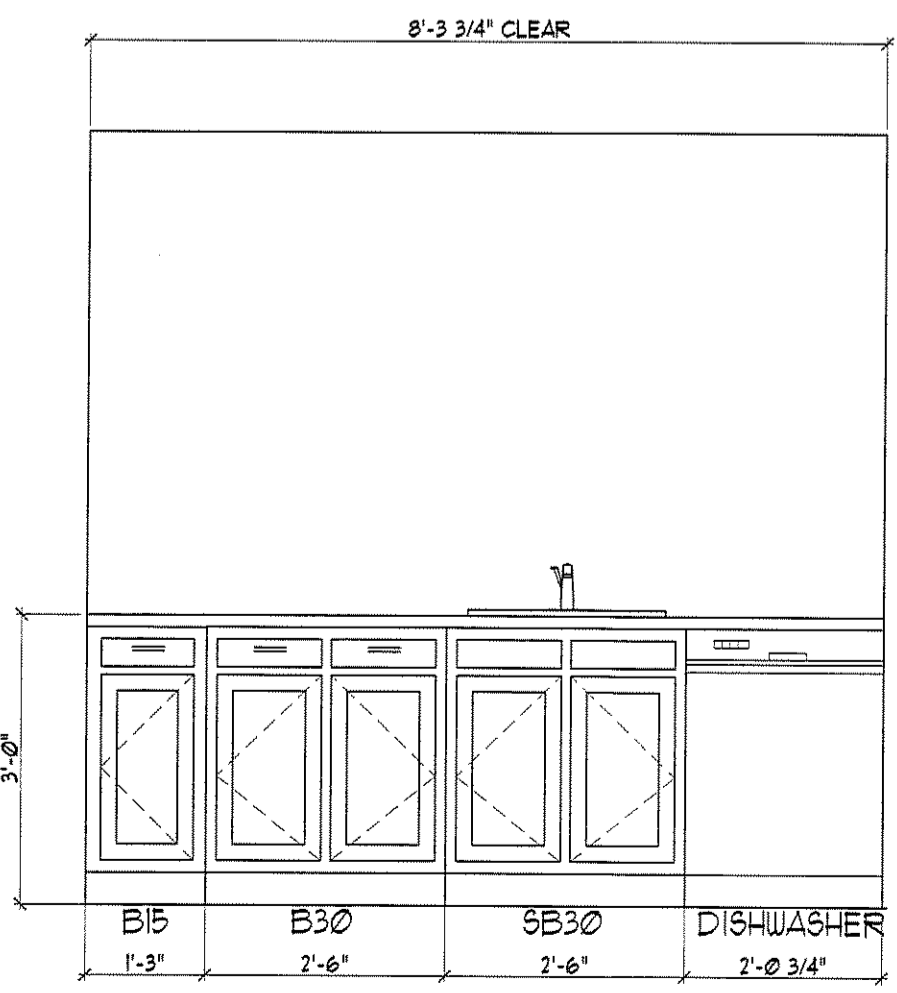
ELEVATION 1 **ELEVATION 3**



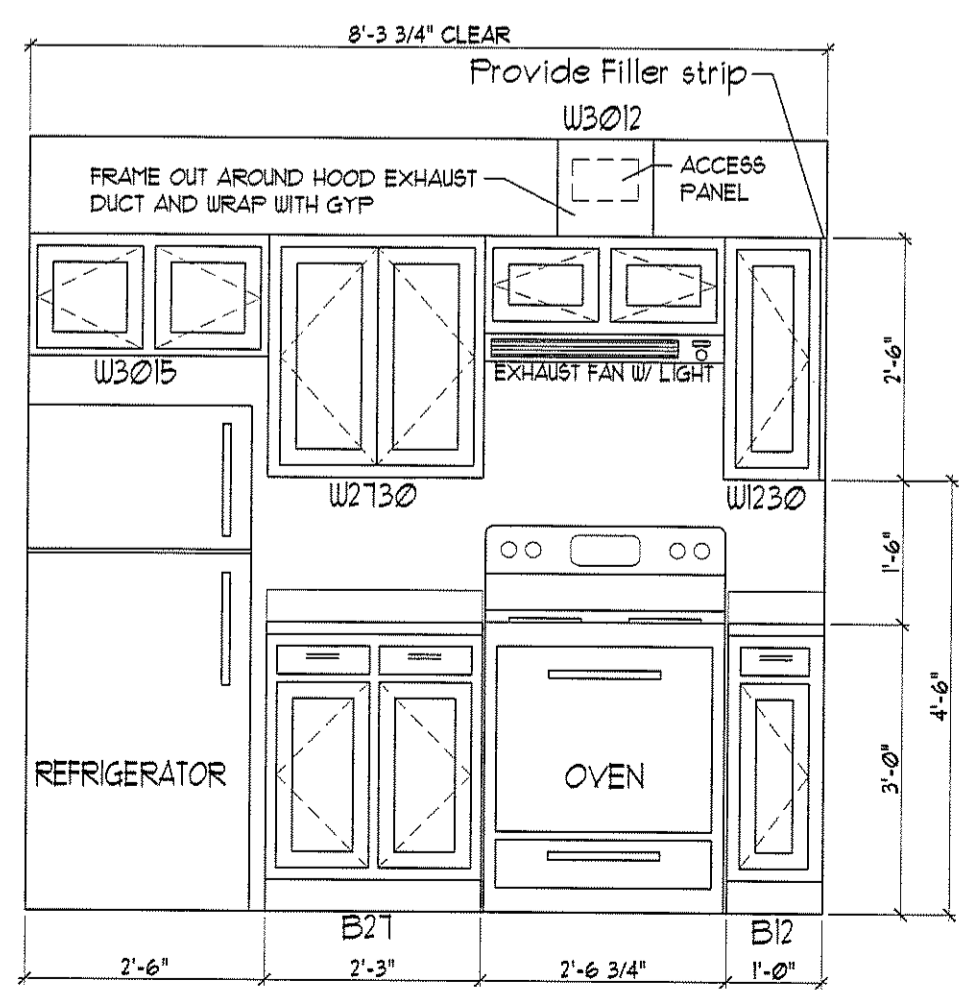
ELEVATION 4



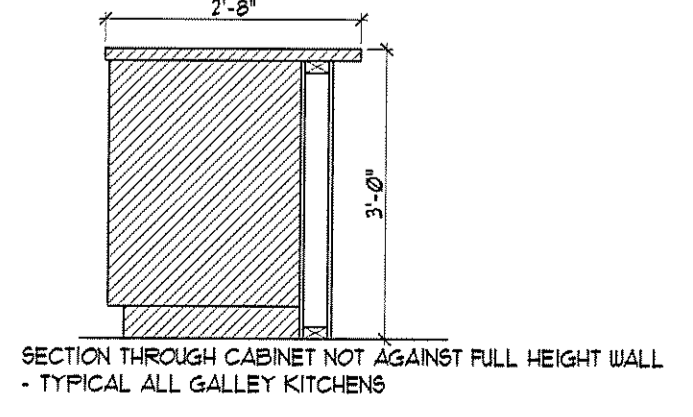
ELEVATION 5



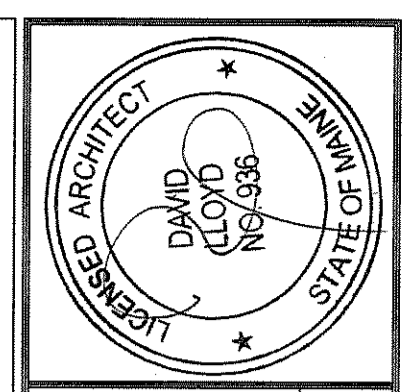
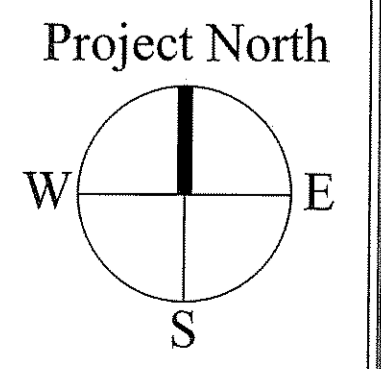
ELEVATION 15



ELEVATION 16



SECTION THROUGH CABINET NOT AGAINST FULL HEIGHT WALL
 - TYPICAL ALL GALLEY KITCHENS



OWNER:
53 DANFORTH STREET, LP
C/O THE SZANTON COMPANY
 ONE CITY CENTER - 4TH FLOOR
 PORTLAND, ME 04101

ARCHETYPE, P.A.
ARCHITECTS
 48 Union Wharf Portland, Maine 04101
 (207) 772-6022 Fax (207) 772-4056

Project:
53 DANFORTH
 53 DANFORTH STREET
 PORTLAND, MAINE

Revisions:
 28 May 2008 - 50% MSHA Submittal
 1 July 2008 - 90% MSHA Submittal
 15 July 2008 - Pricing Set
 25 July 2008 - 100% MSHA Submittal

Date: 28 May 2008
 Scale: 1/4" = 1'-0"
ENLARGED UNIT PLANS

A6.02