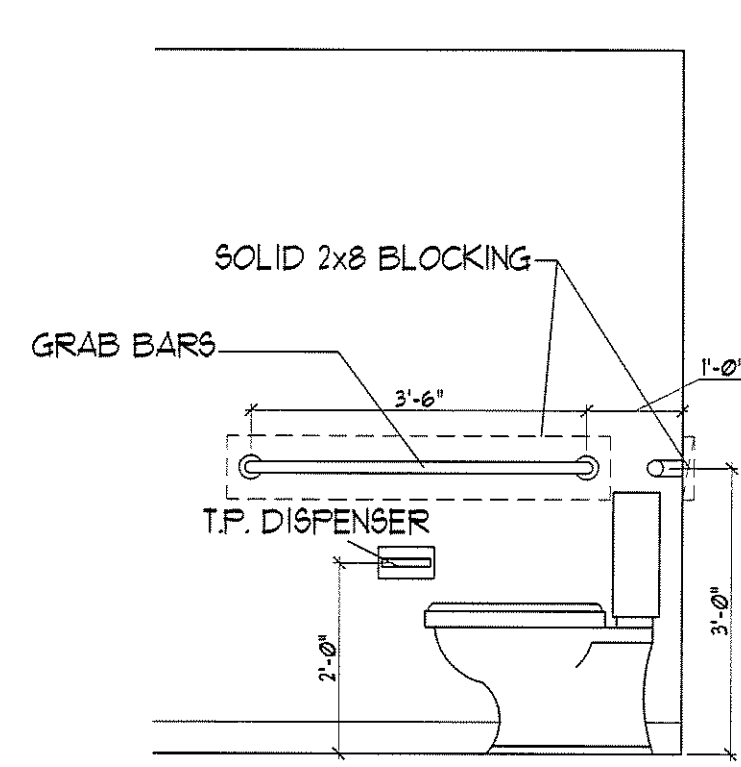
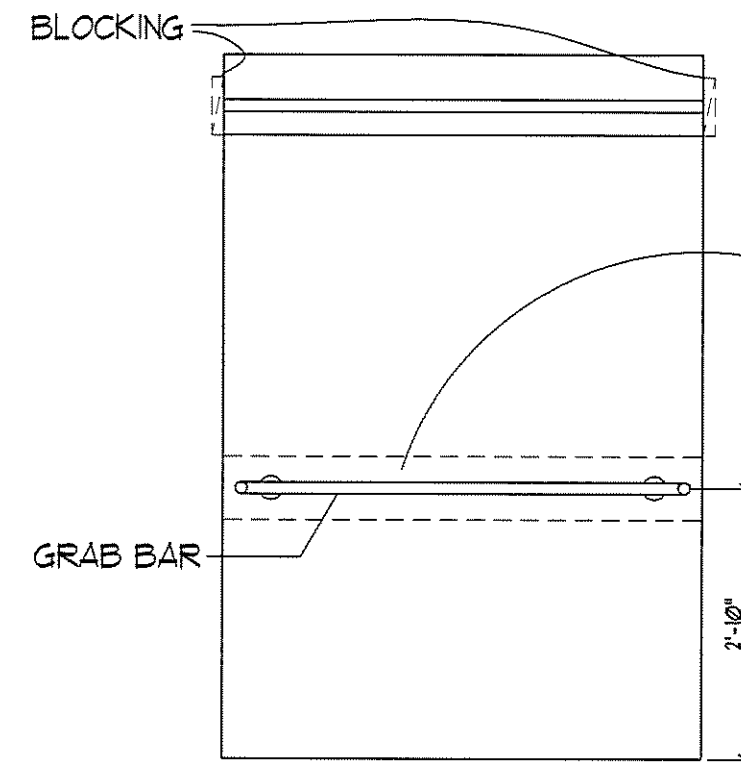


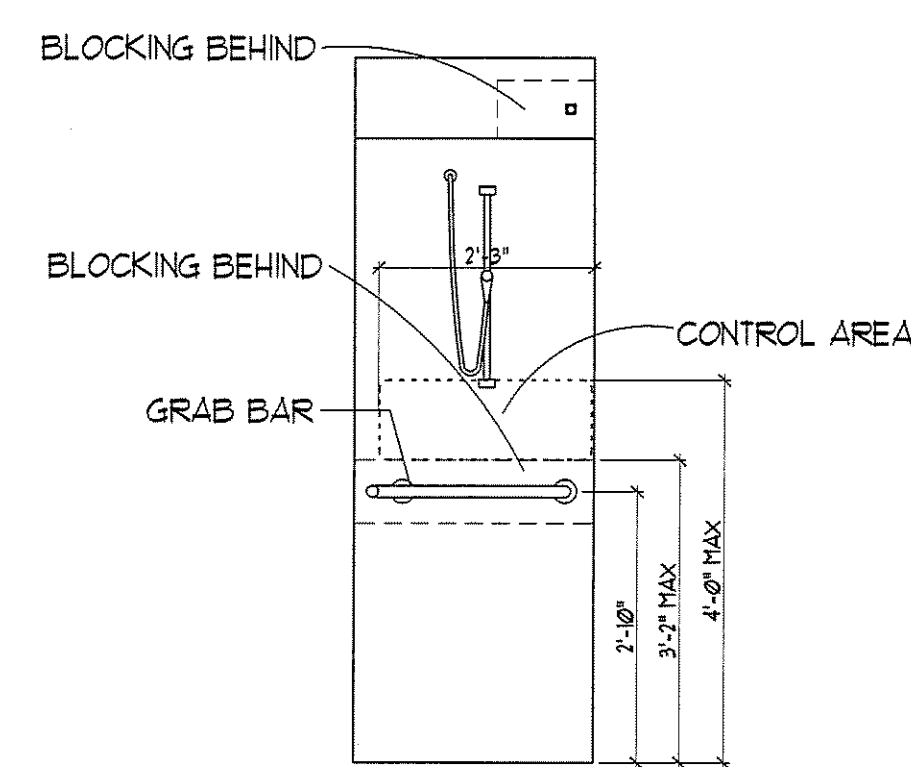
A DWELLING UNIT TYPE 'A'
 SCALE: 1/4" = 1'-0"
 • DESIGNED TO MEET ANSI 117.1 - 'TYPE A'
 • FULLY ACCESSIBLE
 • ONE-BEDROOM, ONE BATH
 • 552.9 SQUARE FEET
 • STORAGE = 201 CU. FT.



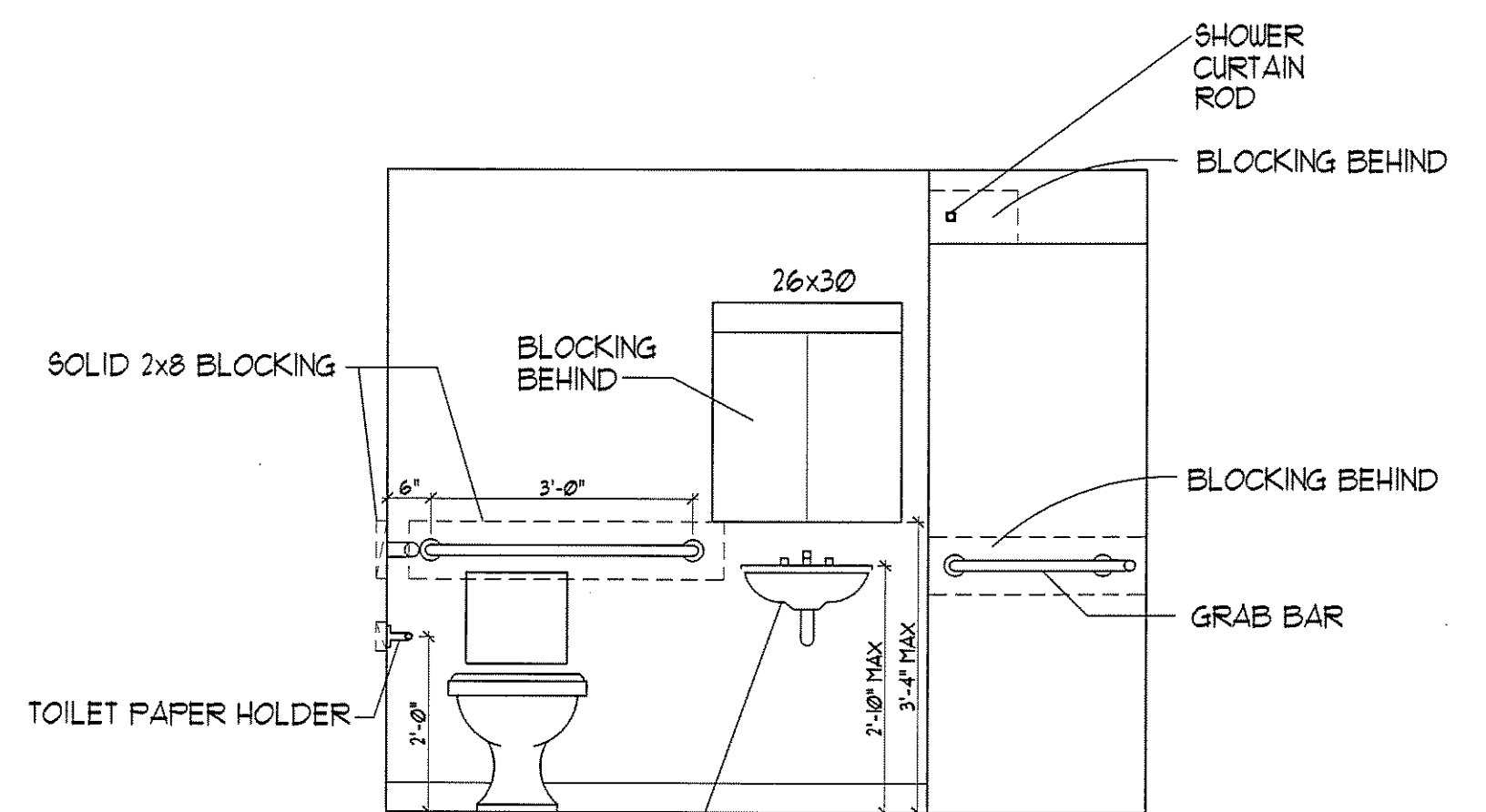
ELEVATION 10



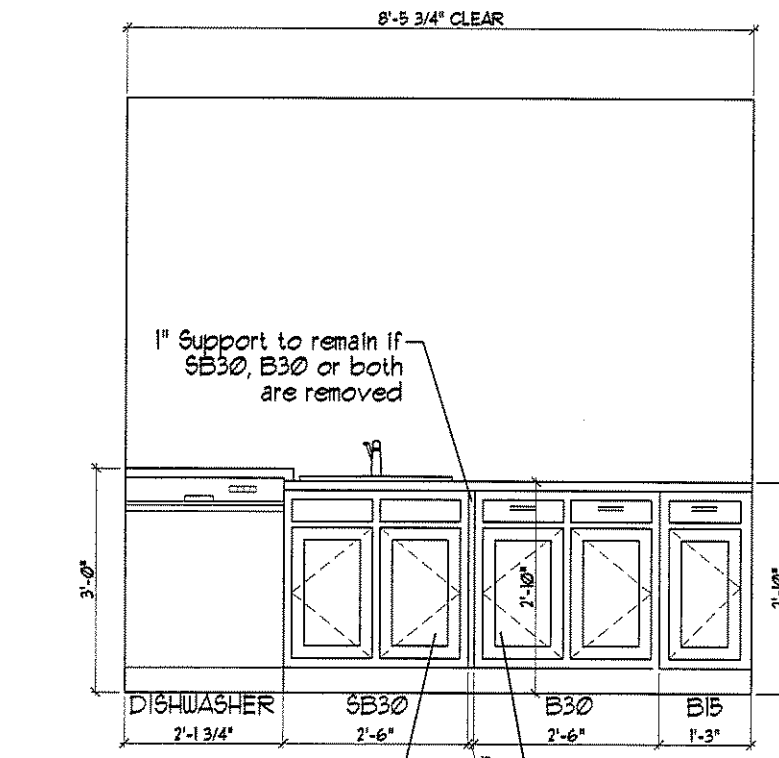
ELEVATION 12



ELEVATION 13

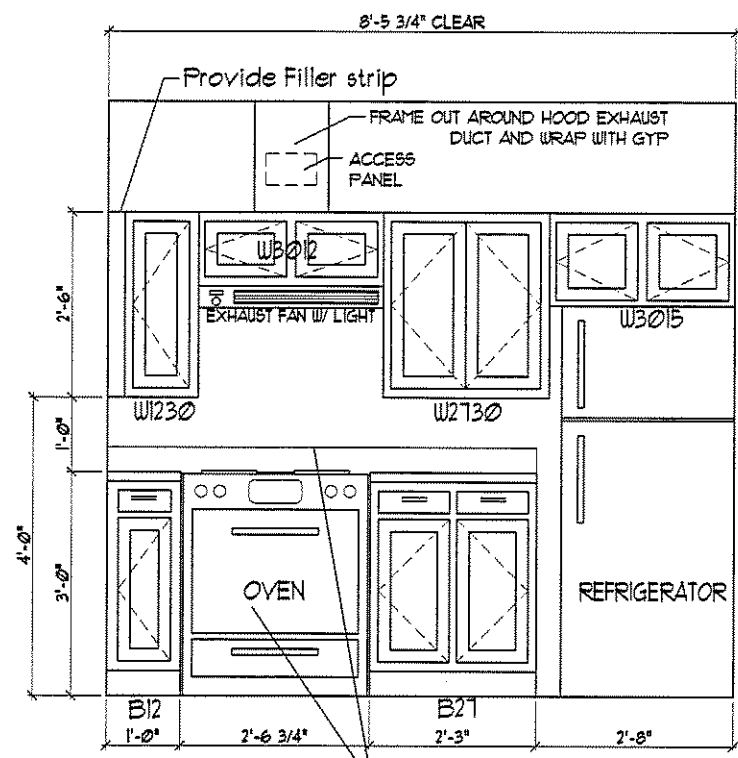


ACCESSIBLE LAVATORY - SHALLOW BOWL LAVATORY WITH DIRECT RETURN TRAPS AT WALL (PIPES INSULATED) ELEVATION 14



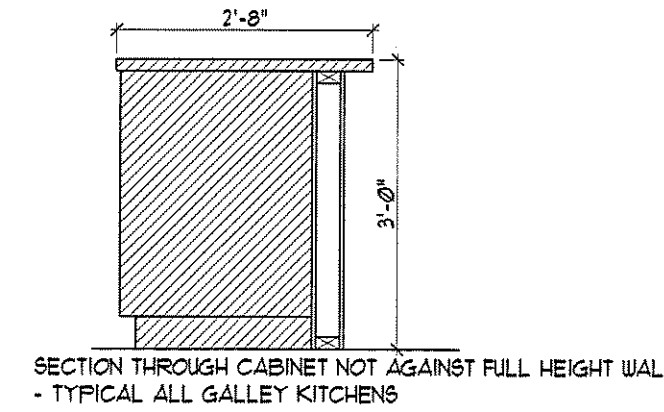
Removable SB30 Sink Front Floor to extend under cabinet Wall behind to be finished

ELEVATION 17

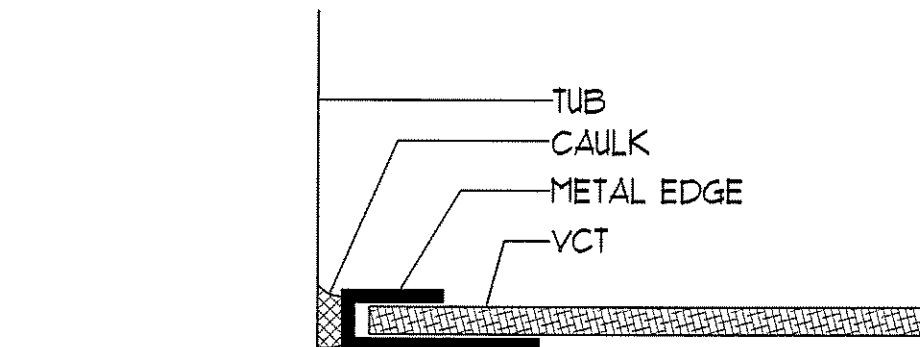


Removable B30 Cabinet Front Floor to extend under cabinet Wall behind to be finished

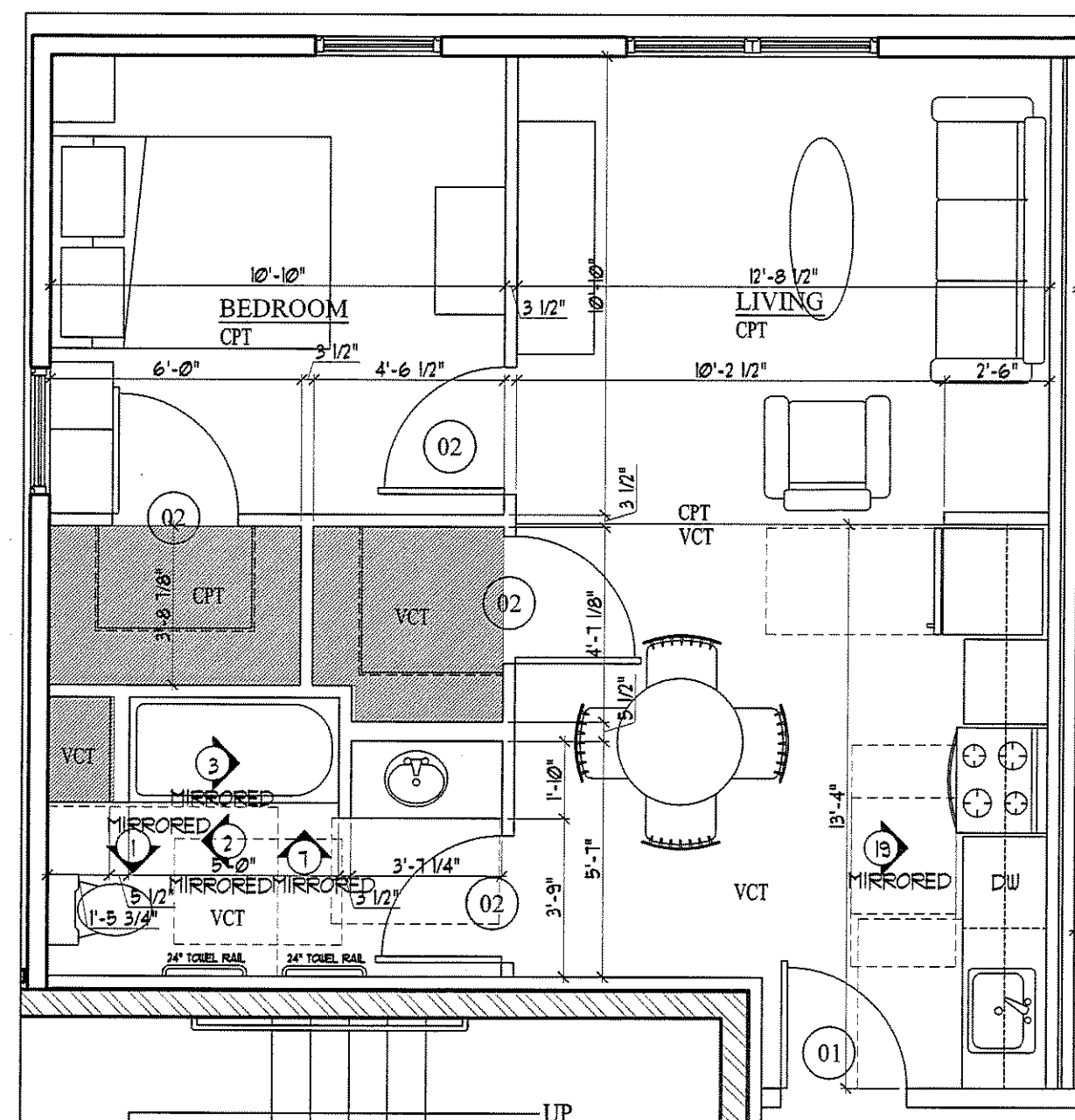
ELEVATION 18



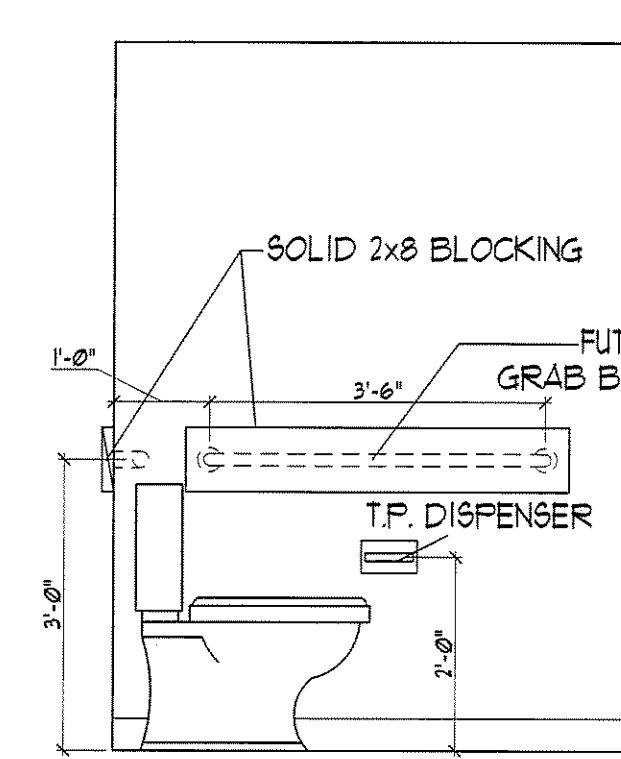
SECTION THROUGH CABINET NOT AGAINST FULL HEIGHT WALL - TYPICAL ALL GALLEY KITCHENS



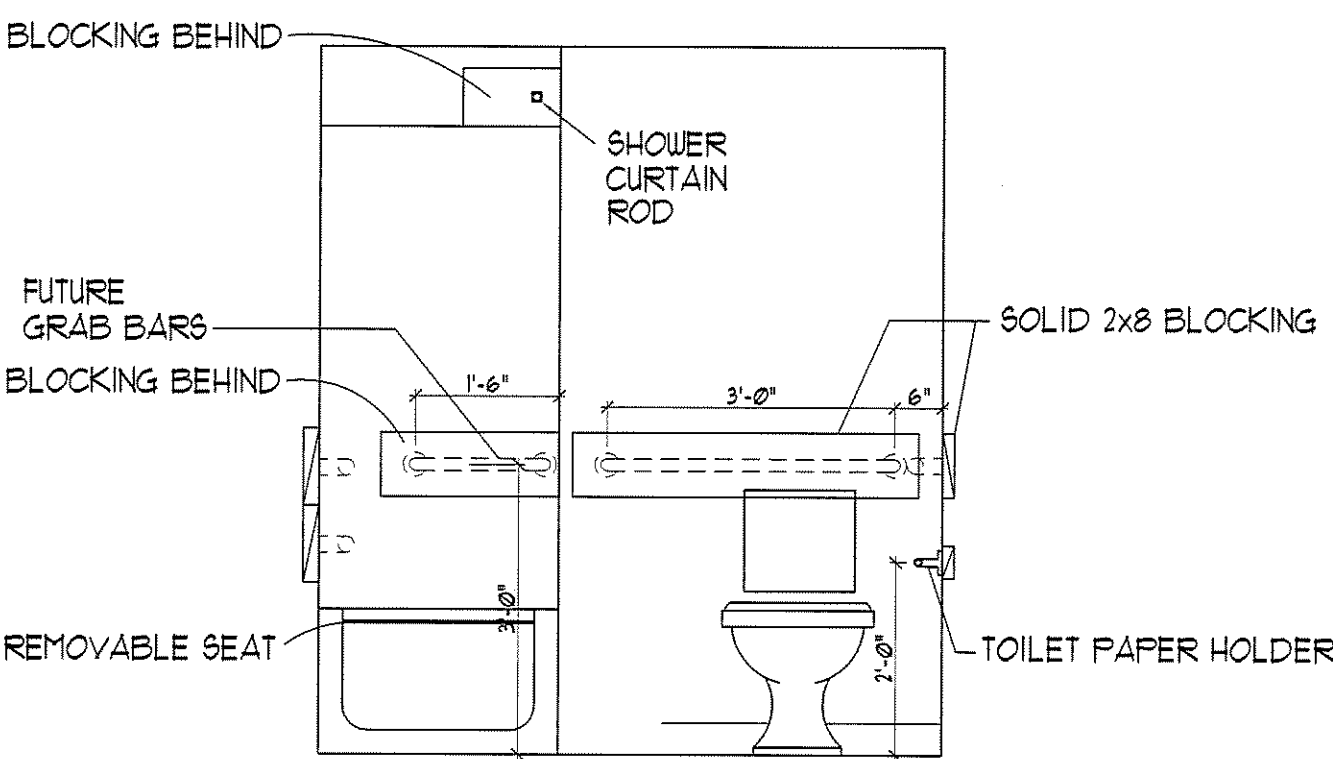
VCT/TUB DETAIL TYPICAL ALL TUBS



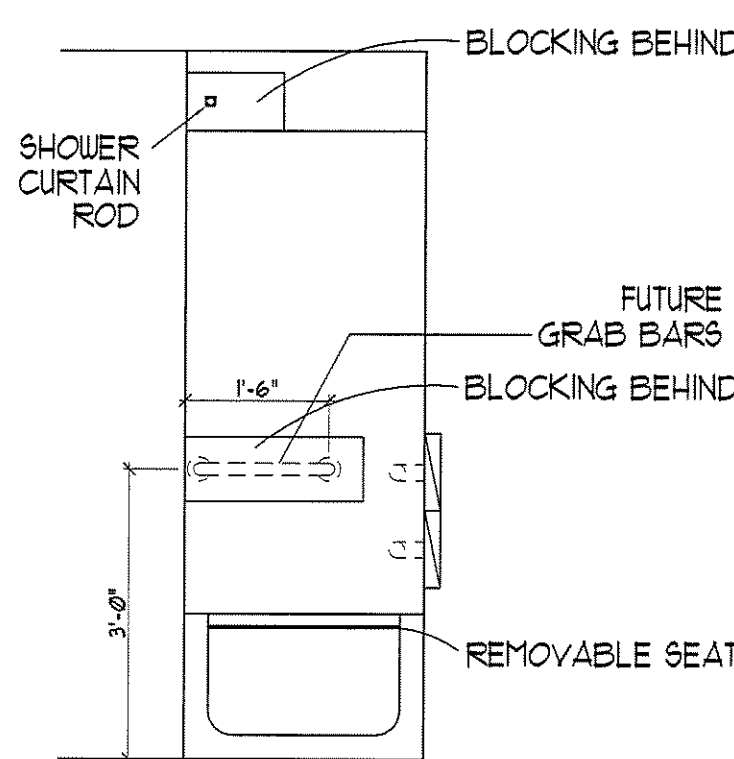
B DWELLING UNIT TYPE 'B'
 SCALE: 1/4" = 1'-0"
 • DESIGNED TO MEET ANSI 117.1 - 'TYPE B'
 • ONE-BEDROOM, ONE BATH (OPTION A)
 • 536 SQUARE FEET
 • STORAGE = 353 CU. FT.



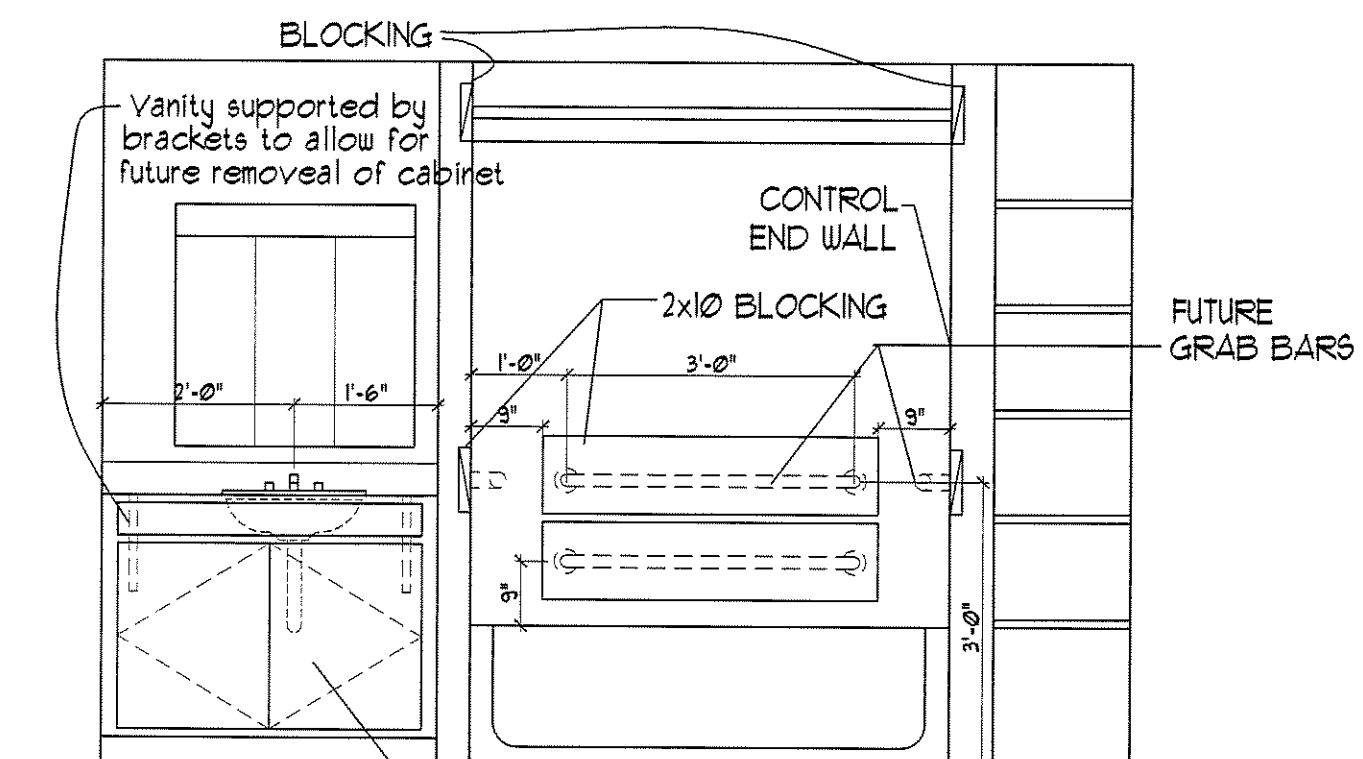
ELEVATION 1



ELEVATION 2

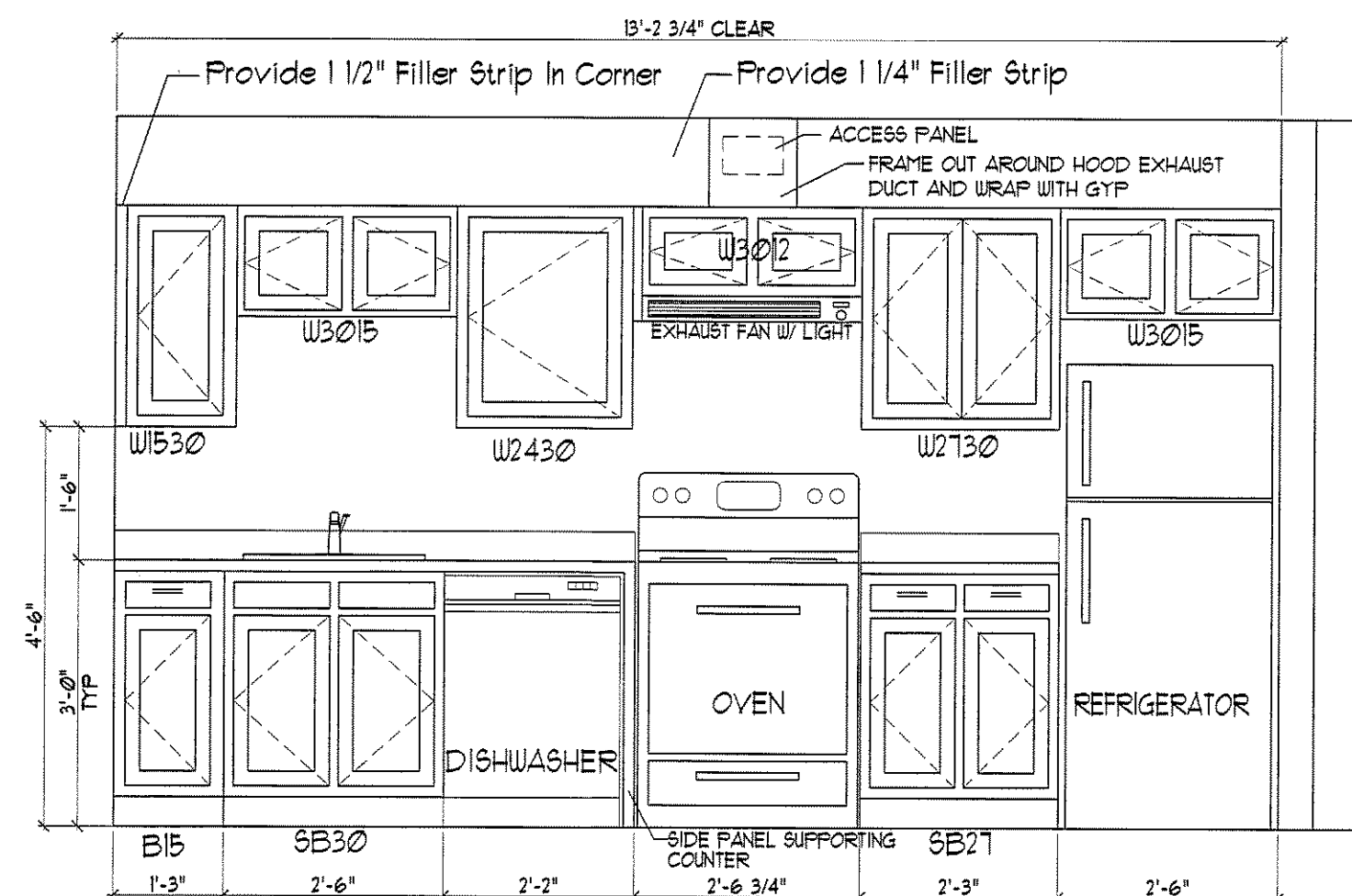


ELEVATION 3

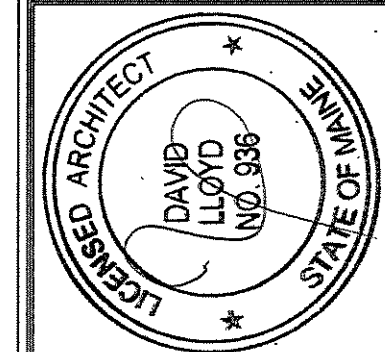
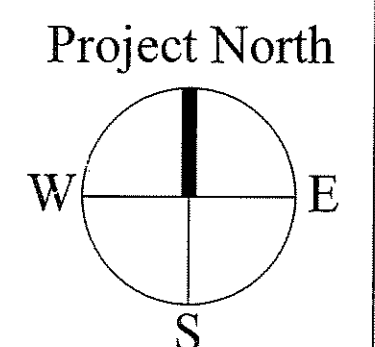


ELEVATION 7

Removable Vanity Front Floor to extend under cabinet Wall behind to be finished



ELEVATION 19



OWNER:
53 DANFORTH STREET, LP
 C/O THE SZANTON COMPANY
 ONE CITY CENTER - 4TH FLOOR
 PORTLAND, ME 04101

ARCHETYPE, P.A.
 ARCHITECTS
 48 Union Wharf Portland, Maine 04101
 (207) 772-6022 Fax (207) 772-4056

Project:
53 DANFORTH
 53 DANFORTH STREET
 PORTLAND, MAINE

Revisions:
 28 May 2008 - 50% MSHA Submittal
 1 July 2008 - 90% MSHA Submittal
 15 July 2008 - Pricing Set
 25 July 2008 - 100% MSHA Submittal

Date: 28 May 2008
 Scale: 1/4" = 1'-0"
 1/2" = 1'-0"
ENLARGED UNIT PLANS

A6.01