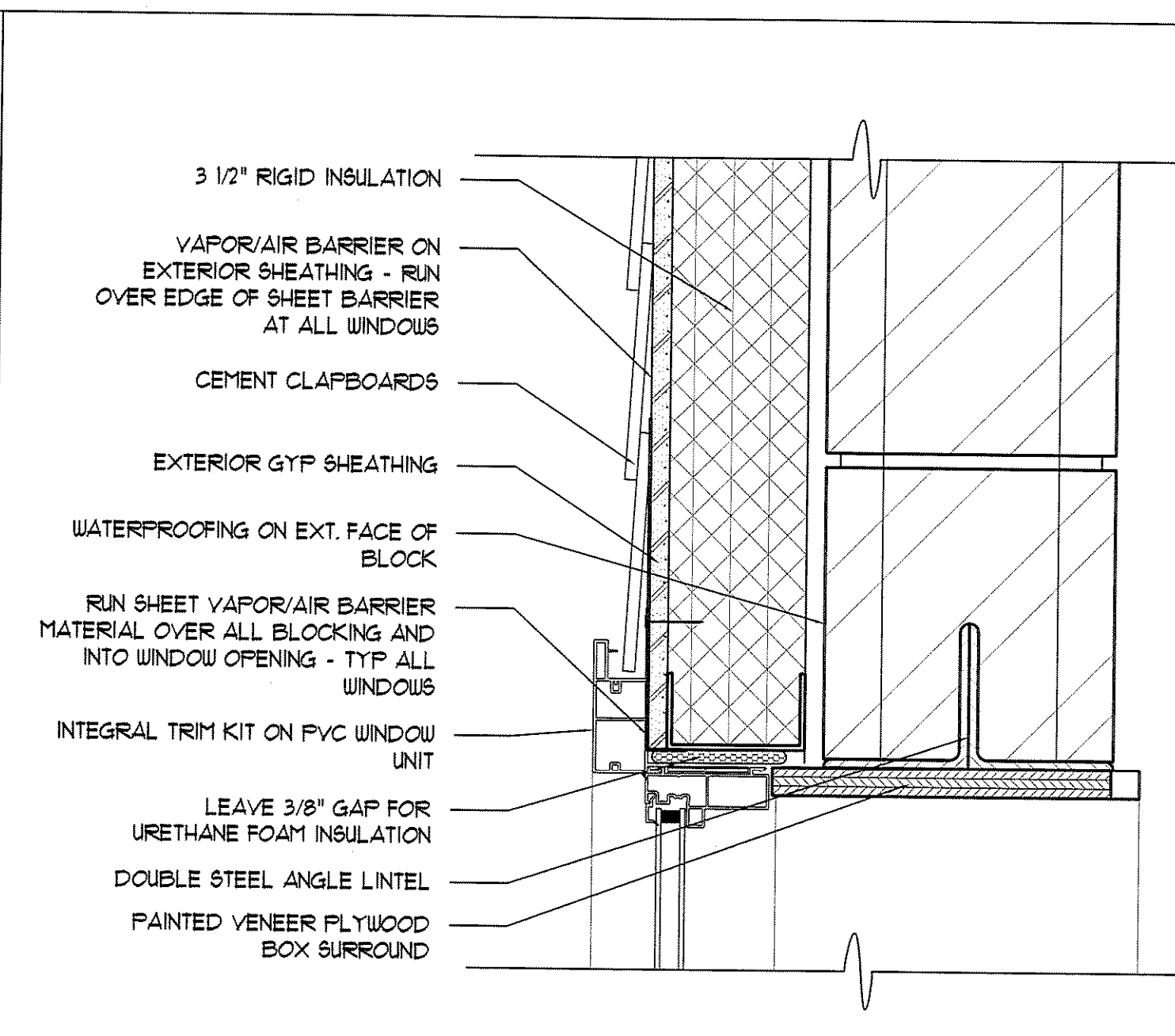
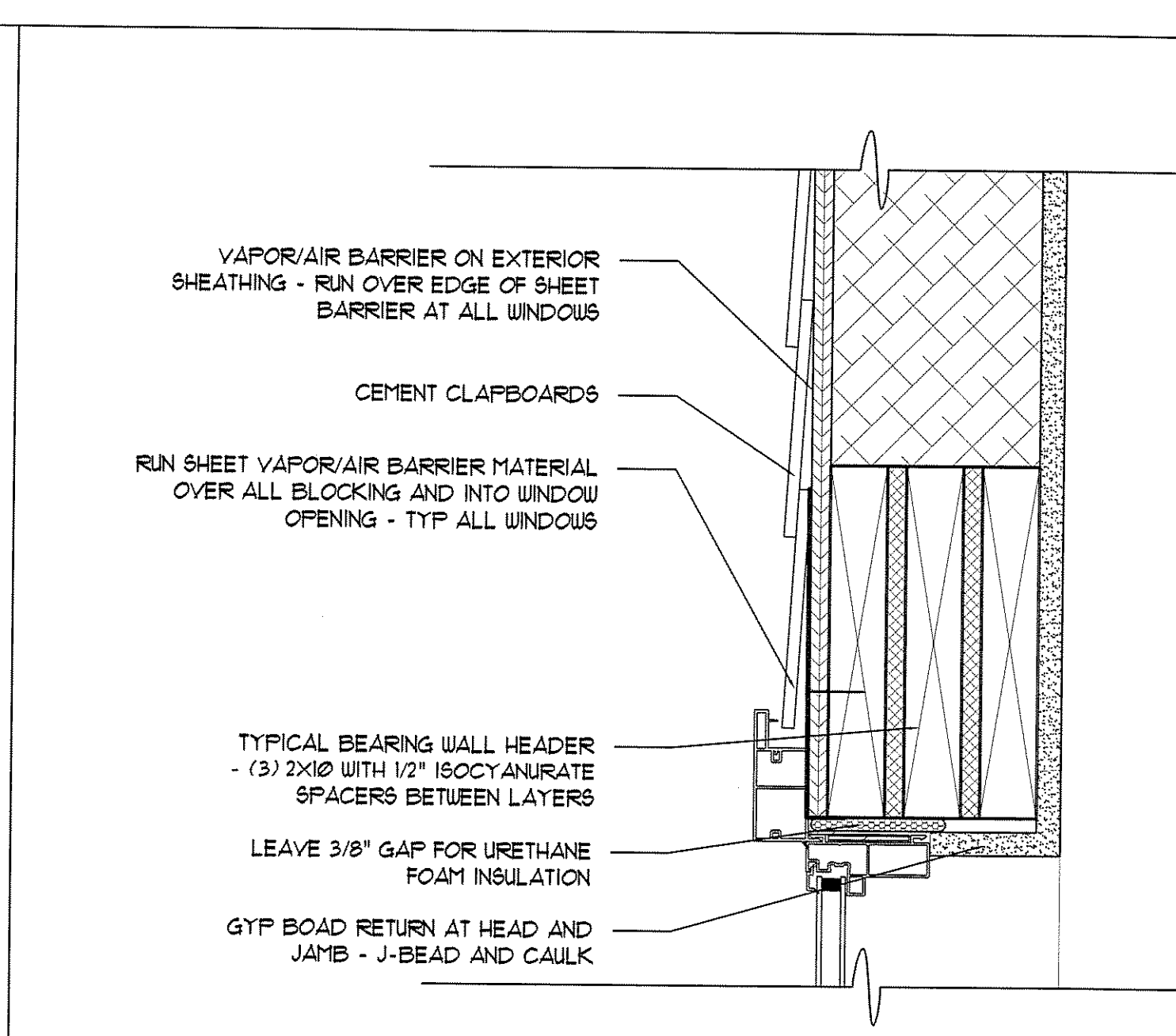


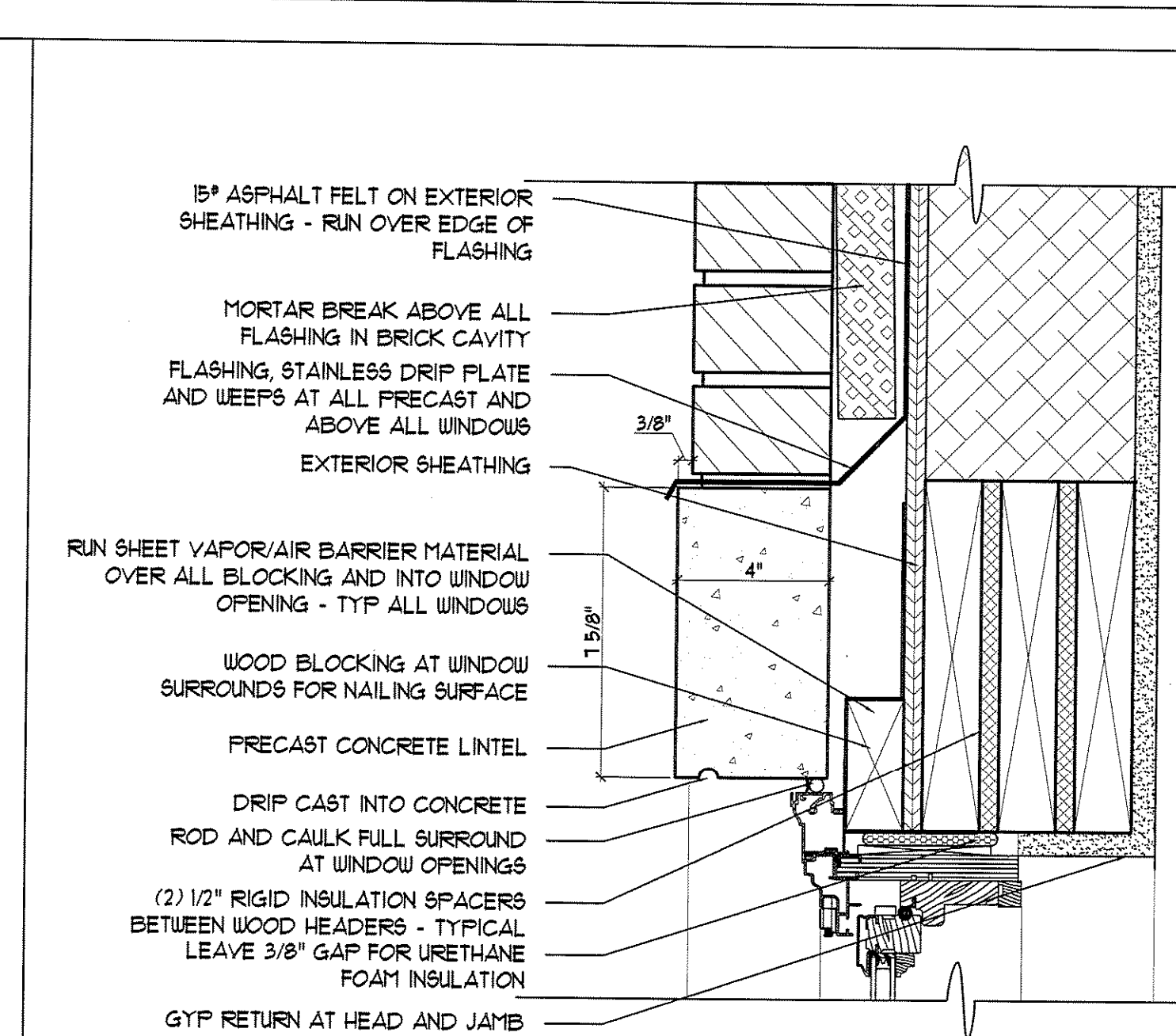
10 WINDOW HEAD DETAIL - STAIR 1 WEST WALL
SCALE: 3"=1'-0"



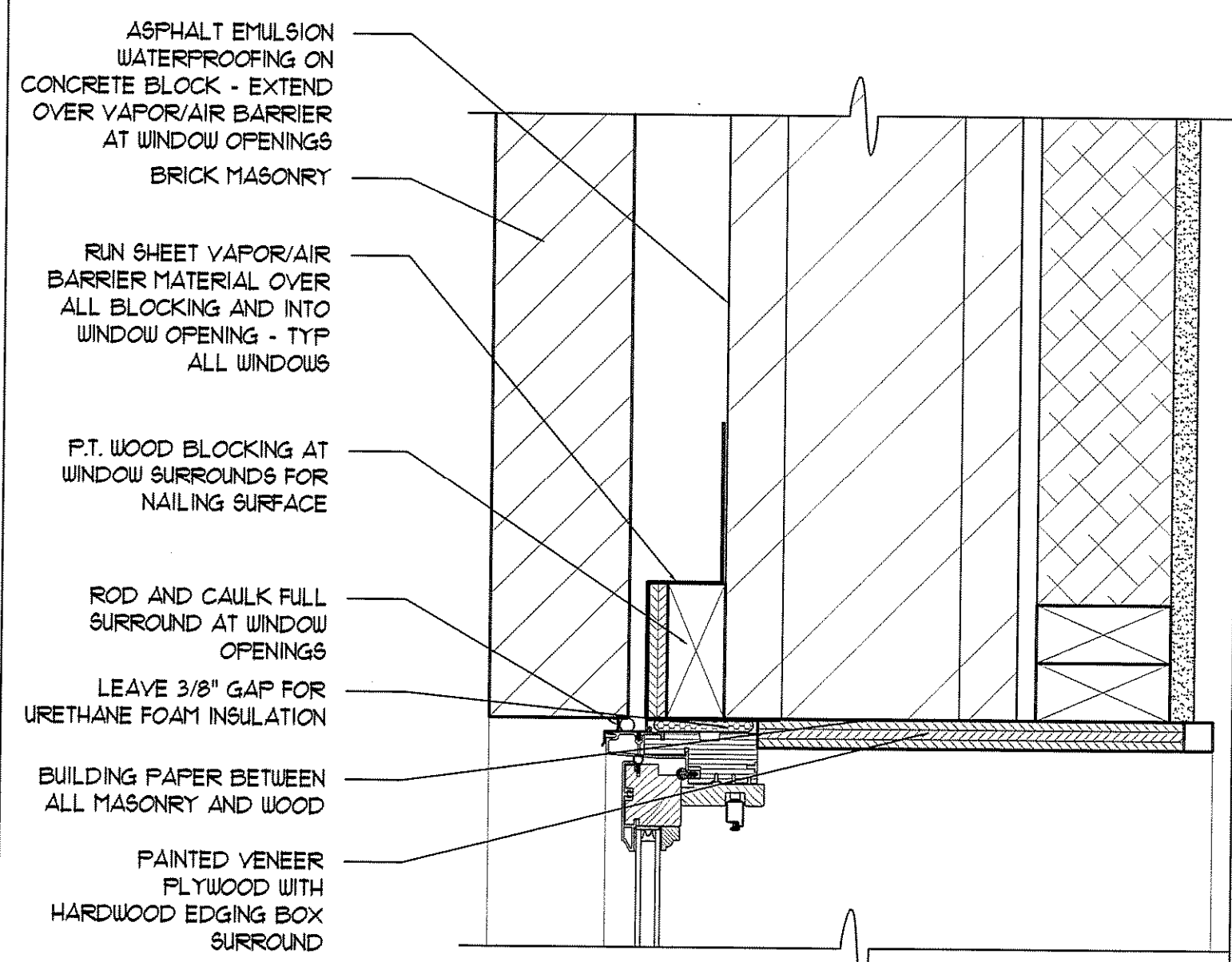
07 WINDOW HEAD DETAIL - STAIR 2 NORTH WALL
SCALE: 3"=1'-0"



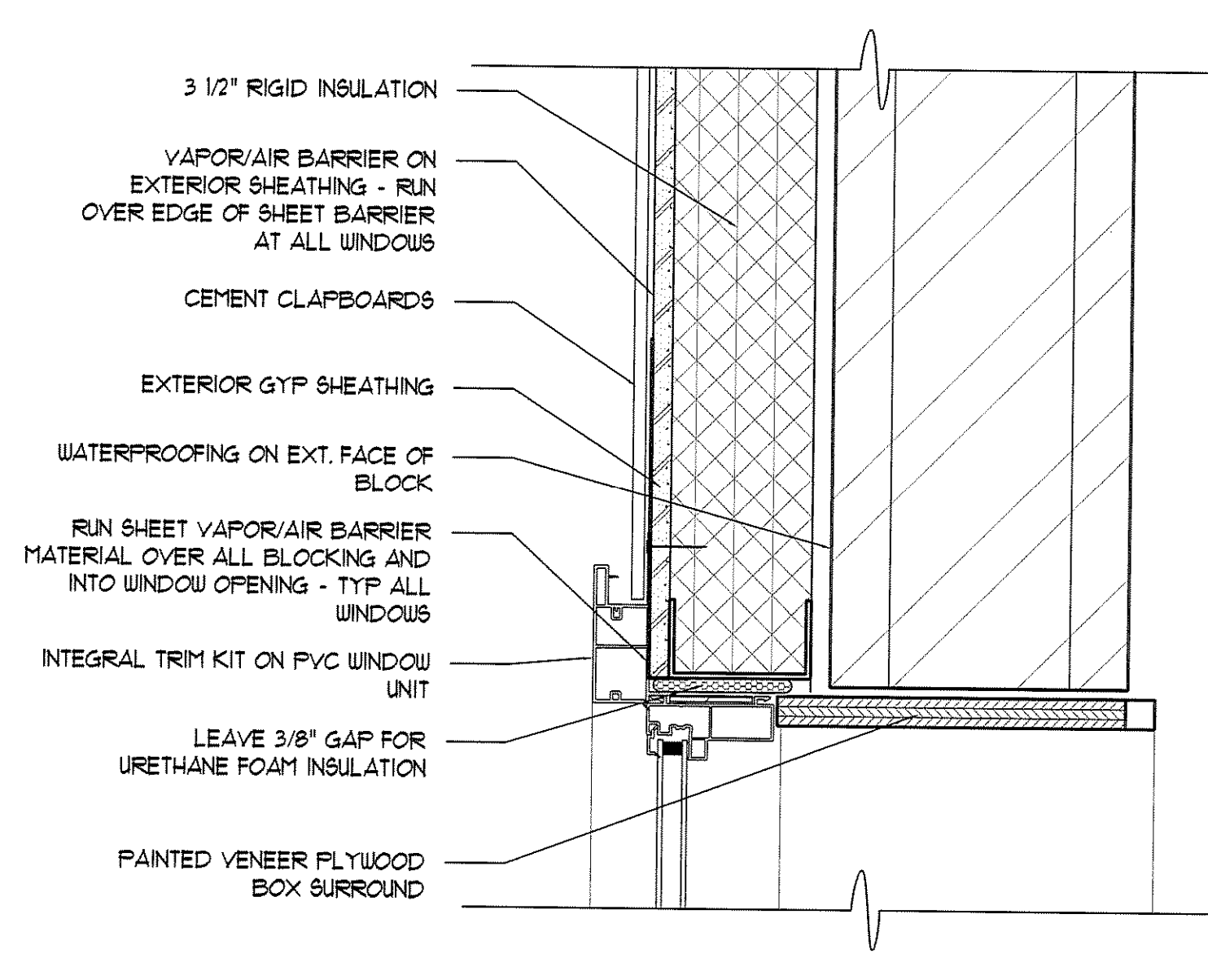
04 WINDOW HEAD DETAIL - CEMENT SIDING
SCALE: 3"=1'-0"



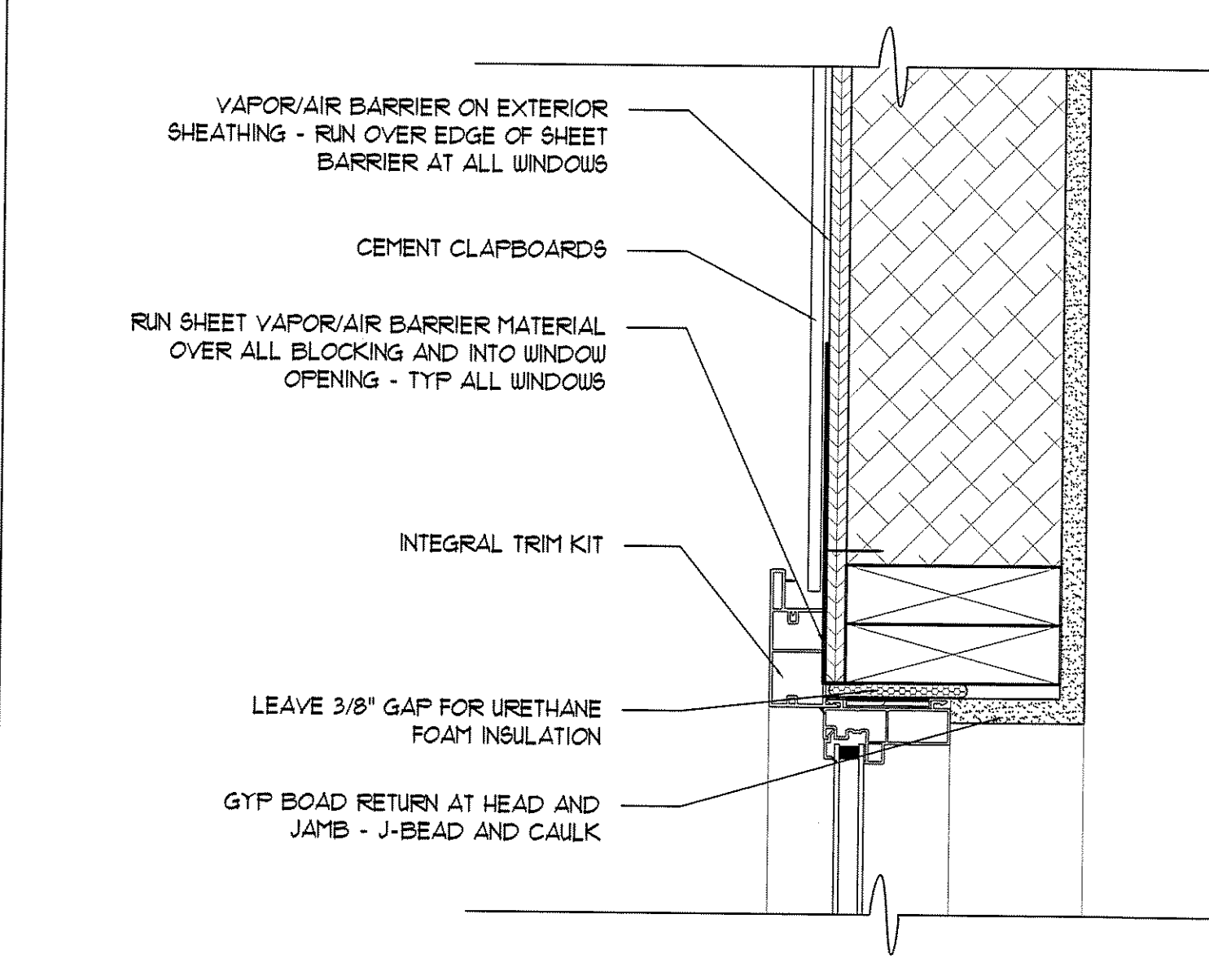
01 WINDOW HEAD DETAIL - MASONRY
SCALE: 3"=1'-0"



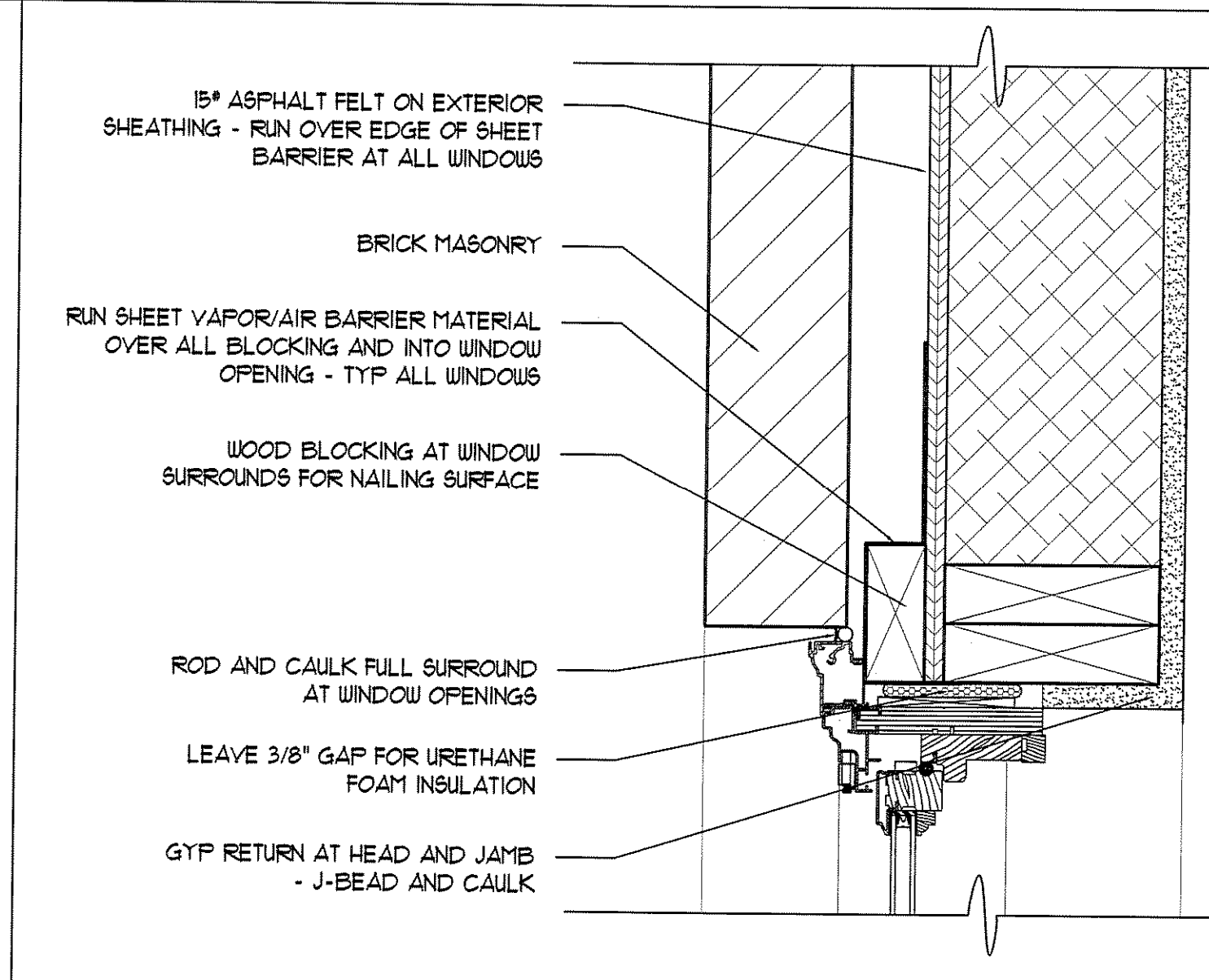
11 WINDOW JAMB DETAIL - STAIR 1 WEST WALL
SCALE: 3"=1'-0"



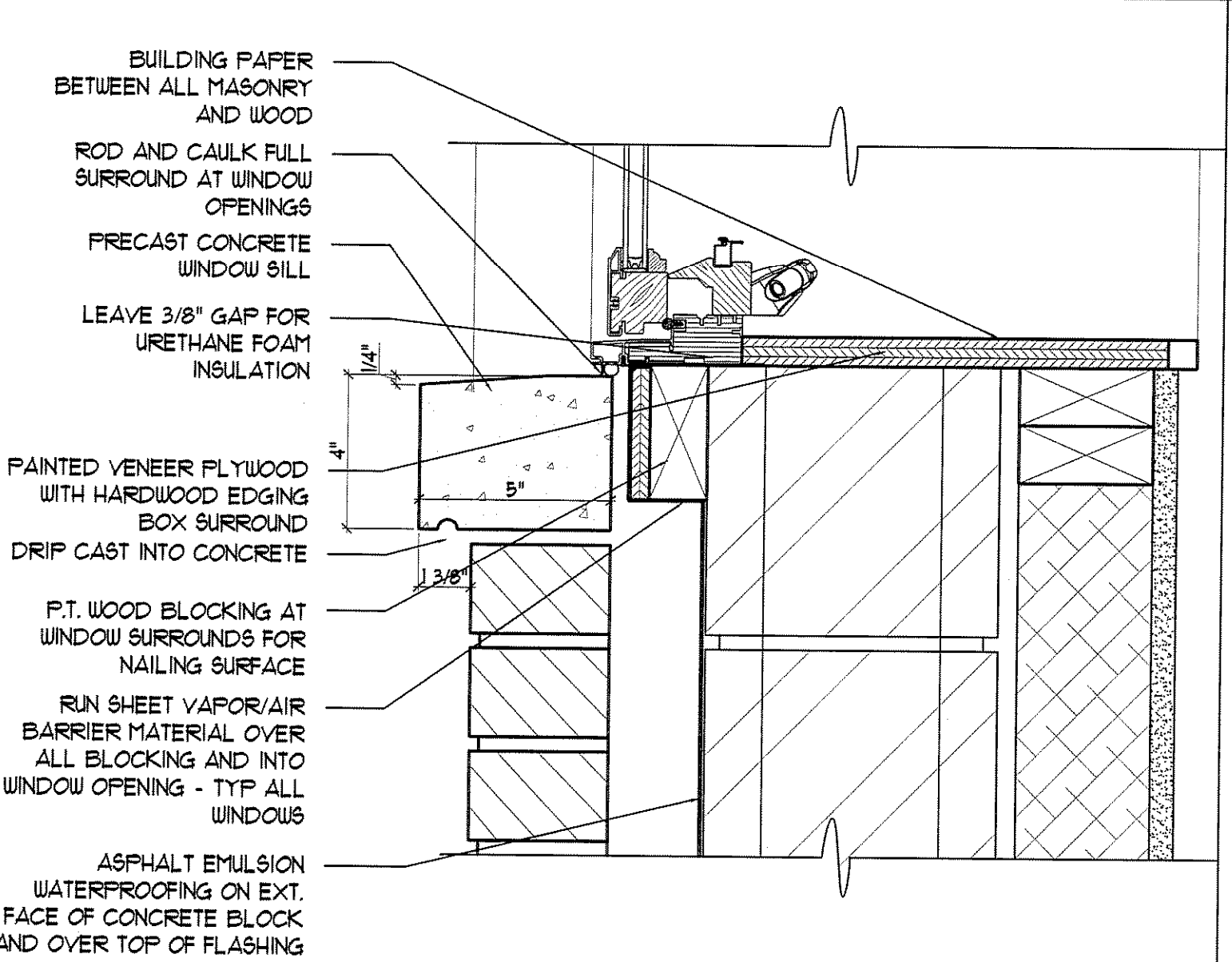
08 WINDOW JAMB DETAIL - STAIR 2 NORTH WALL
SCALE: 3"=1'-0"



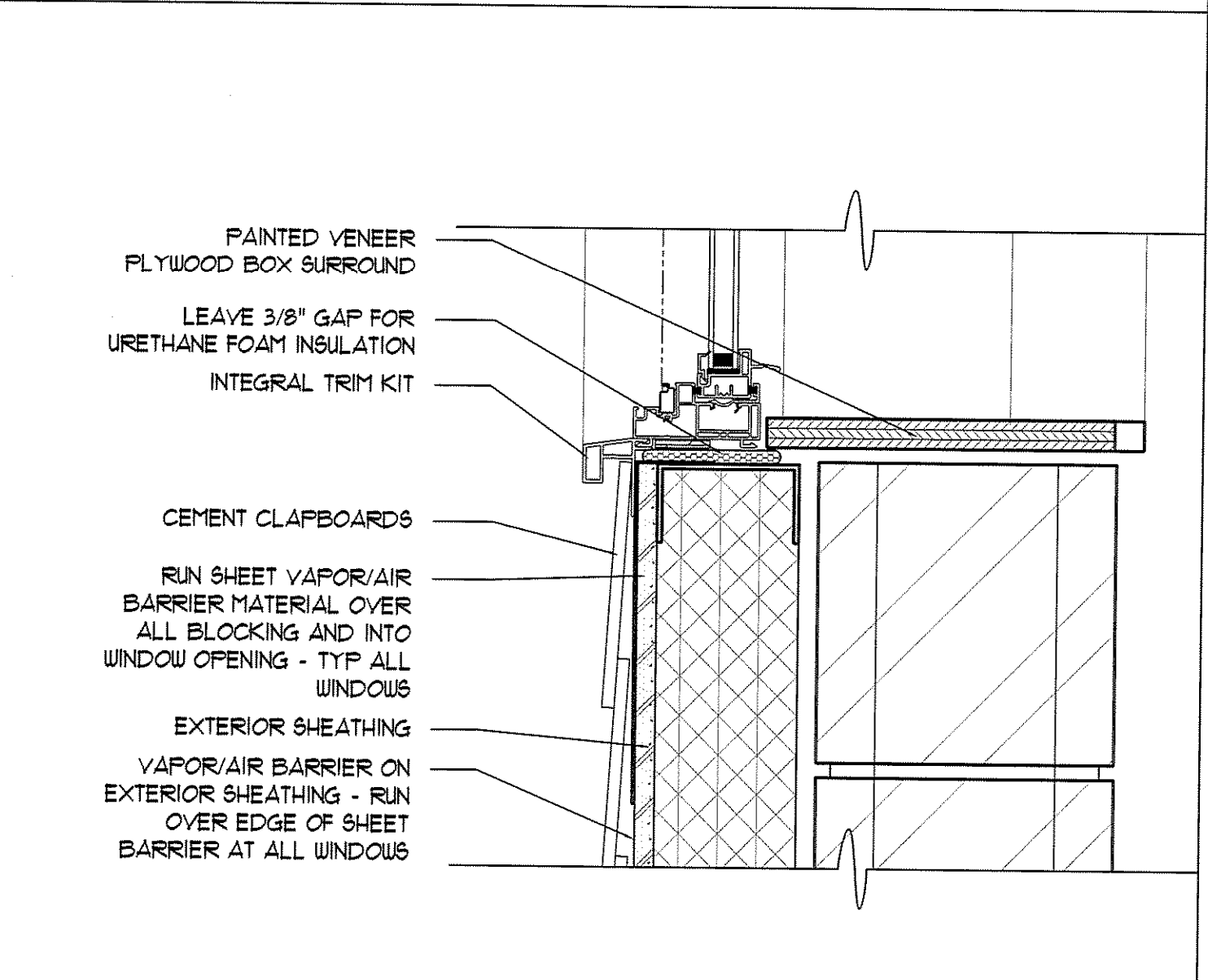
05 WINDOW JAMB DETAIL - CEMENT SIDING
SCALE: 3"=1'-0"



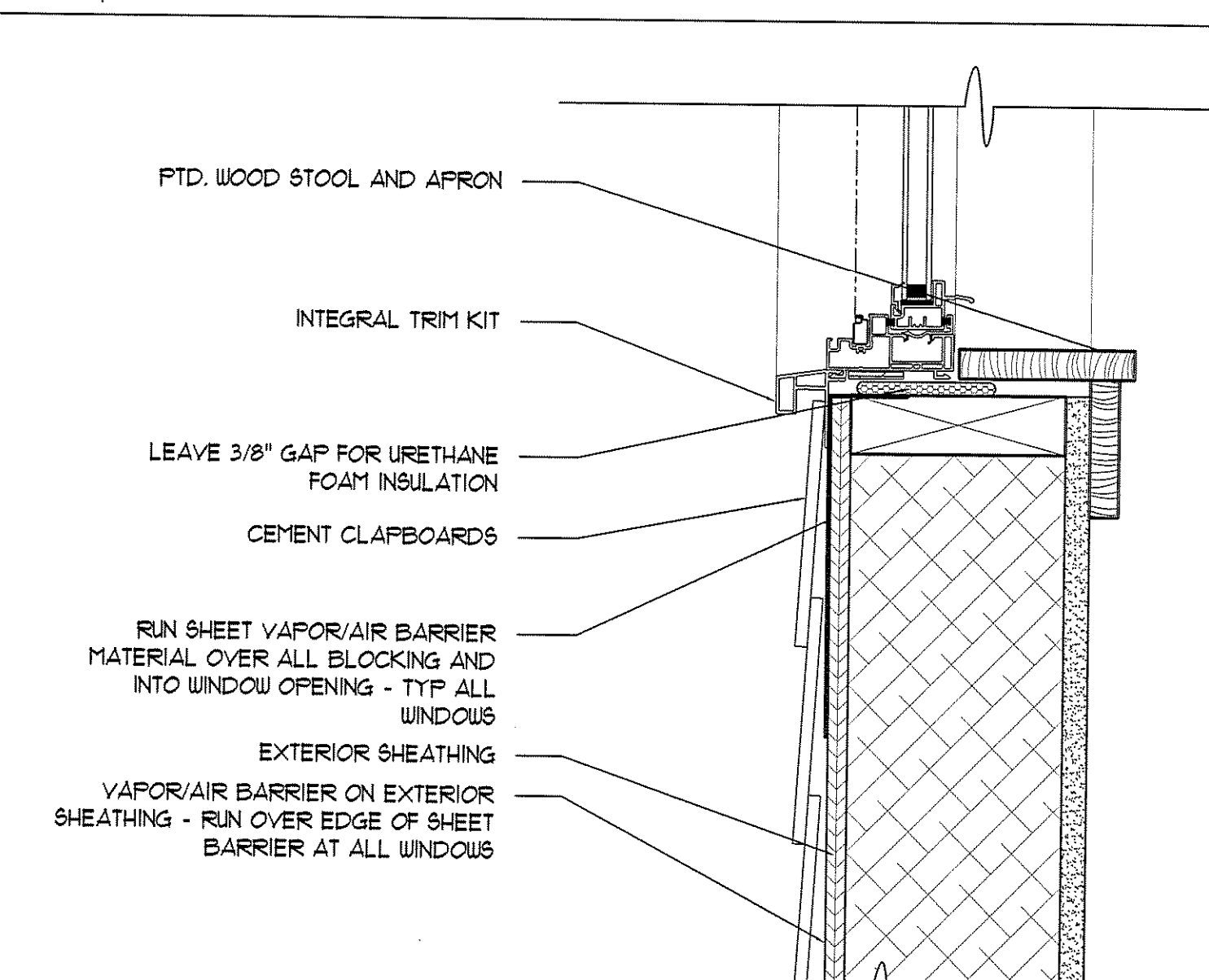
02 WINDOW JAMB DETAIL - MASONRY WALL
SCALE: 3"=1'-0"



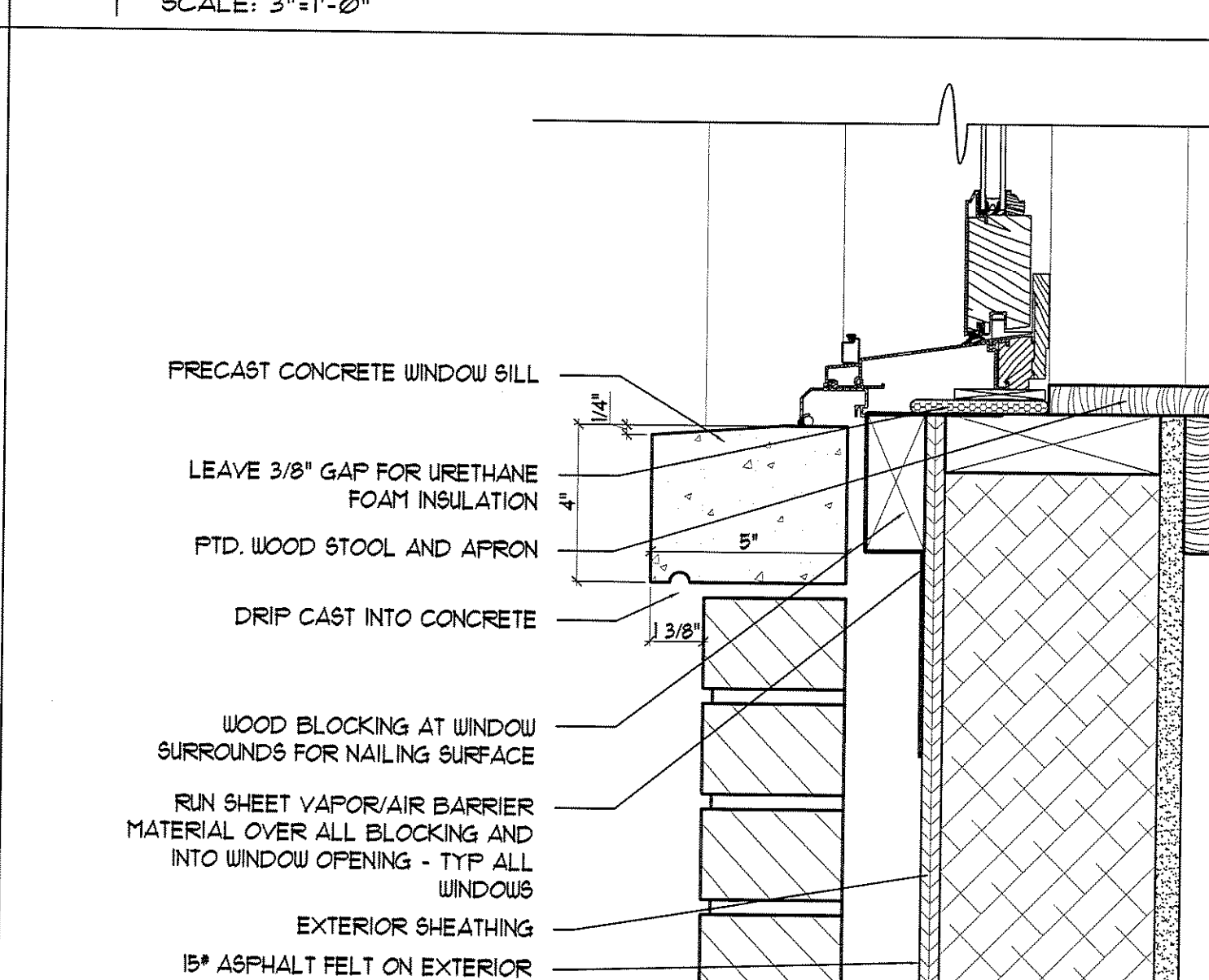
12 WINDOW SILL DETAIL - STAIR 1 WEST WALL
SCALE: 3"=1'-0"



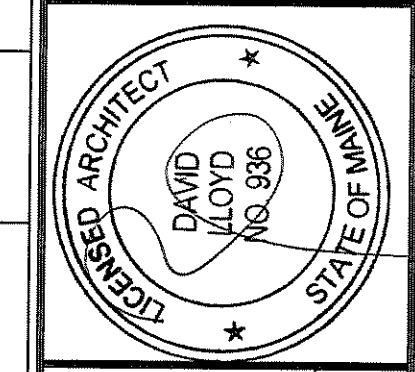
09 WINDOW SILL DETAIL - STAIR 2 NORTH WALL
SCALE: 3"=1'-0"



06 WINDOW SILL DETAIL - CEMENT SIDING
SCALE: 3"=1'-0"



03 WINDOW SILL DETAIL - PRECAST AT MASONRY WALL
SCALE: 3"=1'-0"



OWNER:
53 DANFORTH STREET, LP
C/O THE SZANTON COMPANY
ONE CITY CENTER - 4TH FLOOR
PORTLAND, ME 04101

ARCHETYPE, P.A.
ARCHITECTS
48 Union Wharf Portland, Maine 04101
(207) 772-6022 Fax (207) 772-4056

Project:
53 DANFORTH
PORTLAND, MAINE

Revisions:
28 May 2008 - 50% MSHA Submittal
1 July 2008 - 90% MSHA Submittal
15 July 2008 - Pricing Set
25 July 2008 - 100% MSHA Submittal

Date: 28 May 2008
Scale: VARIES
DETAILS

A5.01