

OWNER:  
**53 DANFORTH STREET, LP**  
**C/O THE SZANTON COMPANY**  
 ONE CITY CENTER - 4TH FLOOR  
 PORTLAND, ME 04101

ARCHETYPE, P.A.  
**ARCHITECTS**  
 48 Union Wharf Portland, Maine 04101  
 (207) 772-6022 Fax (207) 772-4056

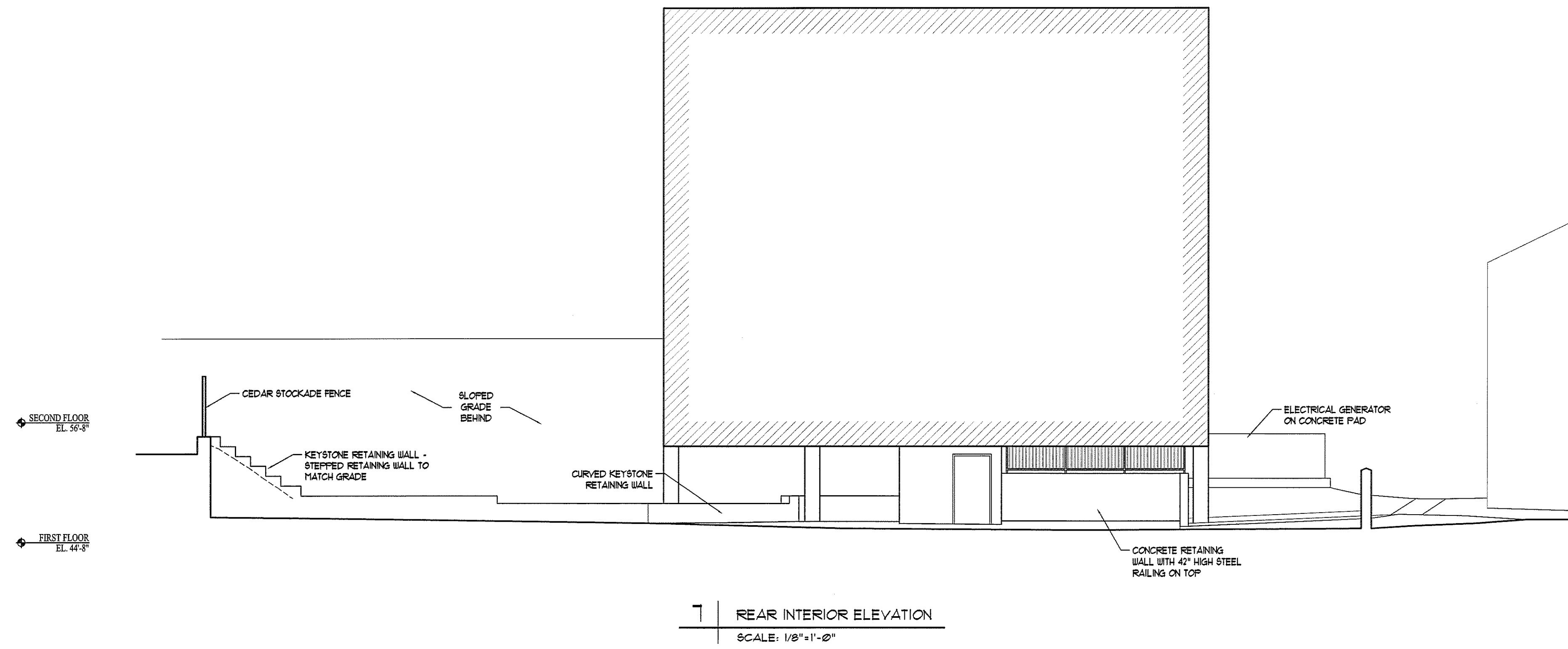
**53 DANFORTH**  
 53 DANFORTH STREET  
 PORTLAND, MAINE

Project:

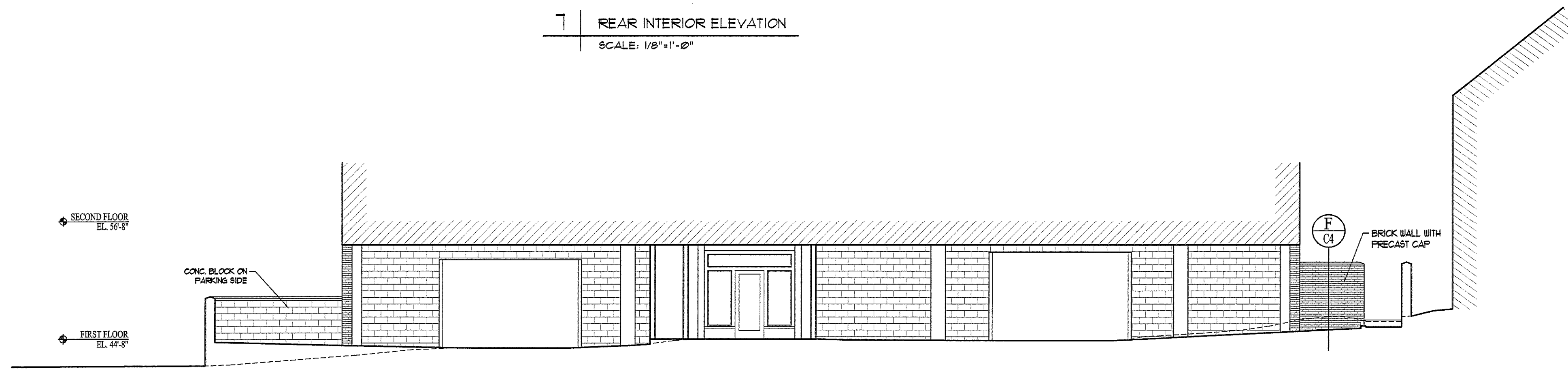
Revisions:	28 May 2008 - 50% MSHA Submittal
	1 July 2008 - 90% MSHA Submittal
	15 July 2008 - Pricing Set
	25 July 2008 - 100% MSHA Submittal

Date: 28 May 2008  
 Scale: 1/8" = 1'-0"  
**BUILDING ELEVATIONS**

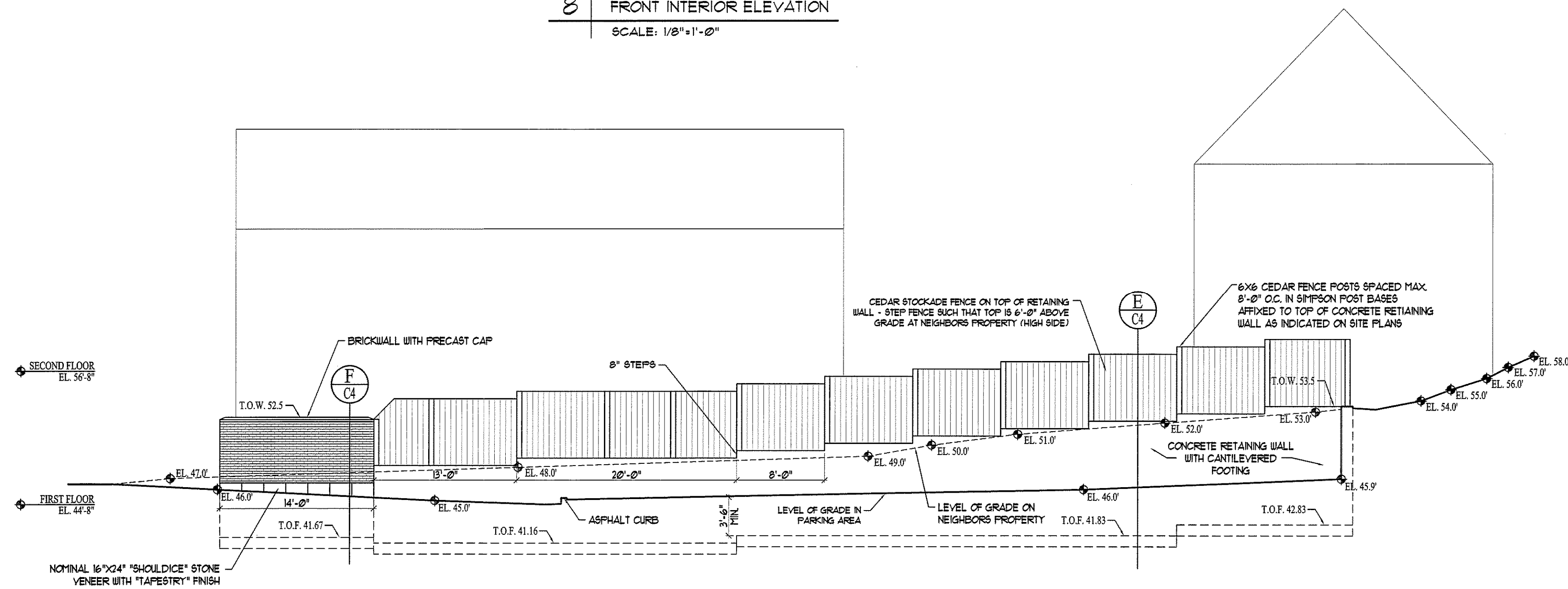
**A2.03**



**7** REAR INTERIOR ELEVATION  
 SCALE: 1/8"=1'-0"



**8** FRONT INTERIOR ELEVATION  
 SCALE: 1/8"=1'-0"



**9** WEST PROPERTY LINE WALL - INTERIOR ELEVATION  
 SCALE: 1/8"=1'-0"

GENERAL NOTES:  
 1. ALL PRECAST JOINTS TO BE RAKED, 1/2" WIDTH, WITH BACKER-ROD AND CAULK  
 2. BUILDING HEIGHT BY DEFINITION: 7 CORNER AVERAGE GRADE PLUS 54'-8" CONTRACT ZONE APPROVAL -  
 $46.5' + 45.4' + 45.1' + 49.0' + 49.4' + 48.0' + 43.0' = 326.4'$   
 $326.4' / 7 = 46.63'$  AVERAGE  
 $46'-7\frac{1}{2}" + 54'-8" = 101'-3\frac{1}{2}"$  ALLOWABLE BUILDING HEIGHT

