

OWNER:
53 DANFORTH STREET, LP
 C/O THE SZANTON COMPANY
 ONE CITY CENTER - 4TH FLOOR
 PORTLAND, ME 04101

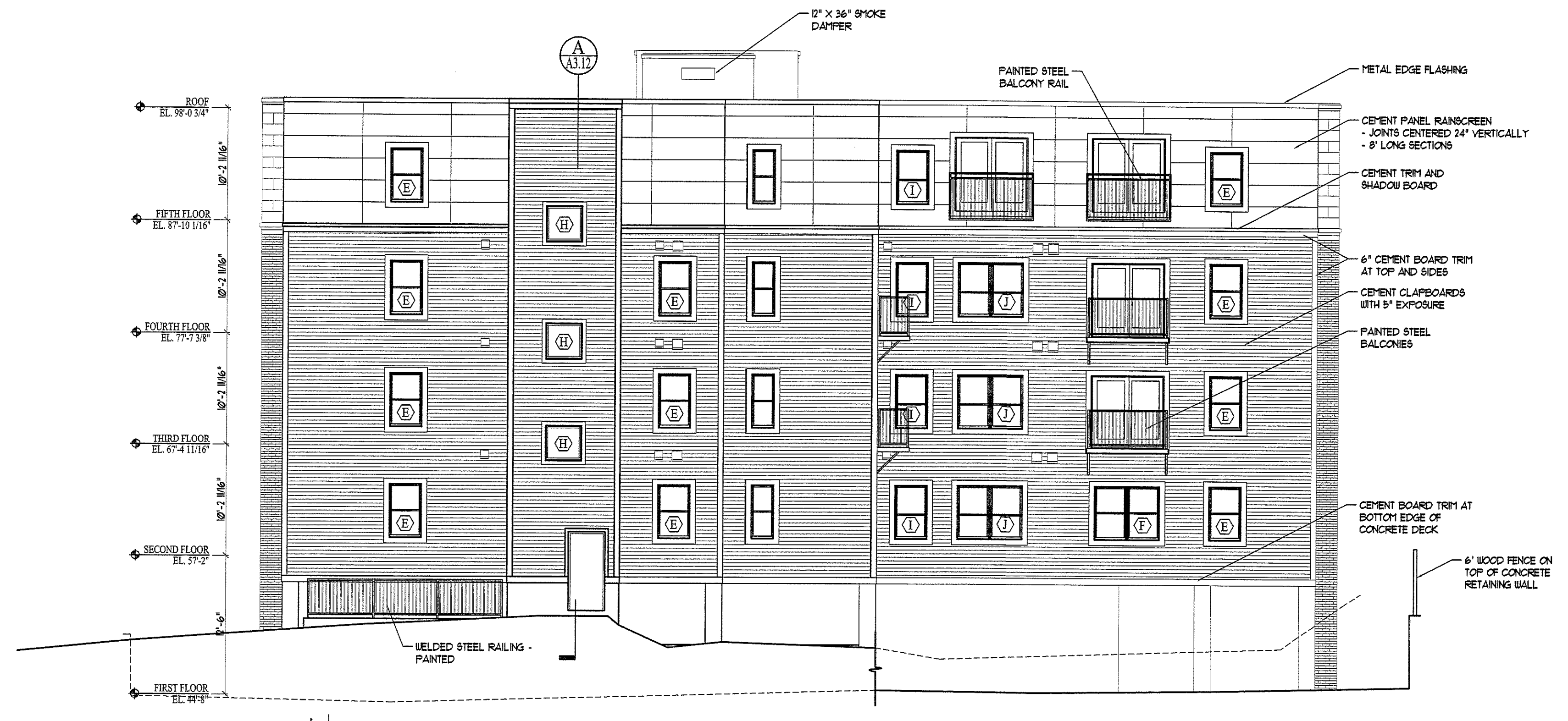
ARCHETYPE, P.A.
ARCHITECTS
 48 Union Wharf Portland, Maine 04101
 (207) 772-6022 Fax (207) 772-4056

53 DANFORTH
 53 DANFORTH STREET
 PORTLAND, MAINE

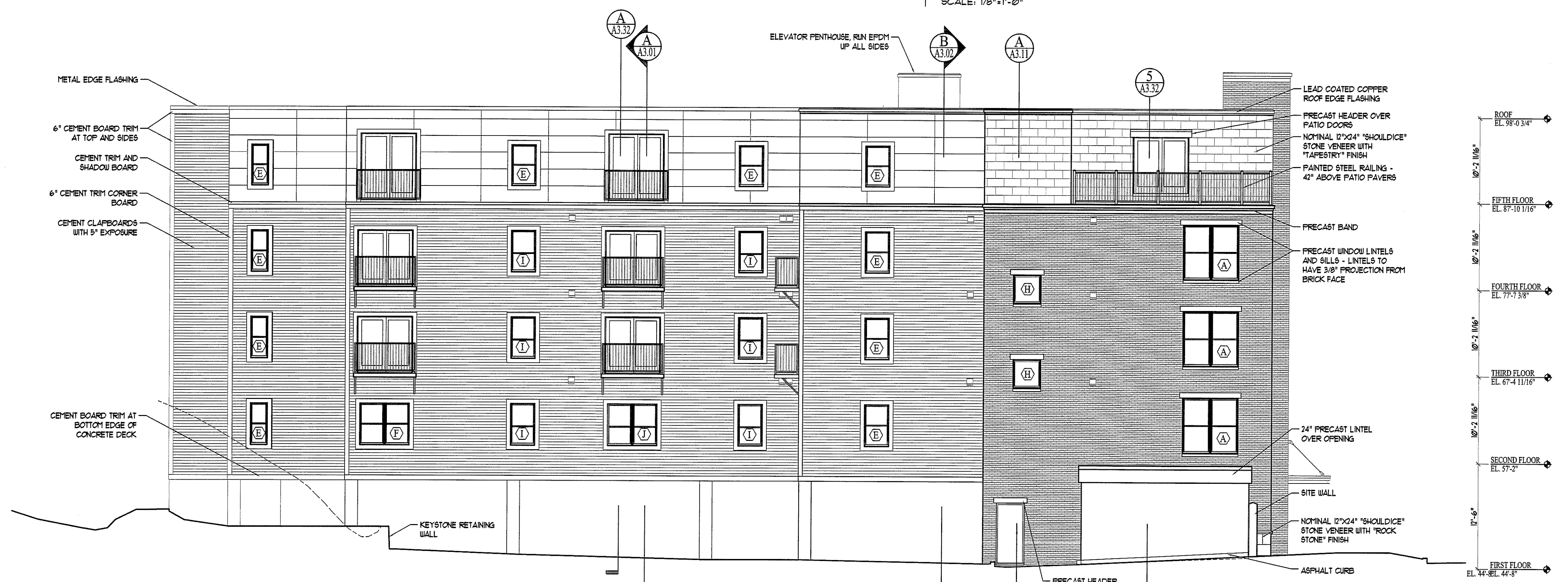
Project:
 Revisions:
 28 May 2008 - 50% MSHA Submittal
 15 July 2008 - Pricing Set
 25 July 2008 - 100% MSHA Submittal

Date: 28 May 2008
 Scale: 1/8" = 1'-0"
BUILDING ELEVATIONS

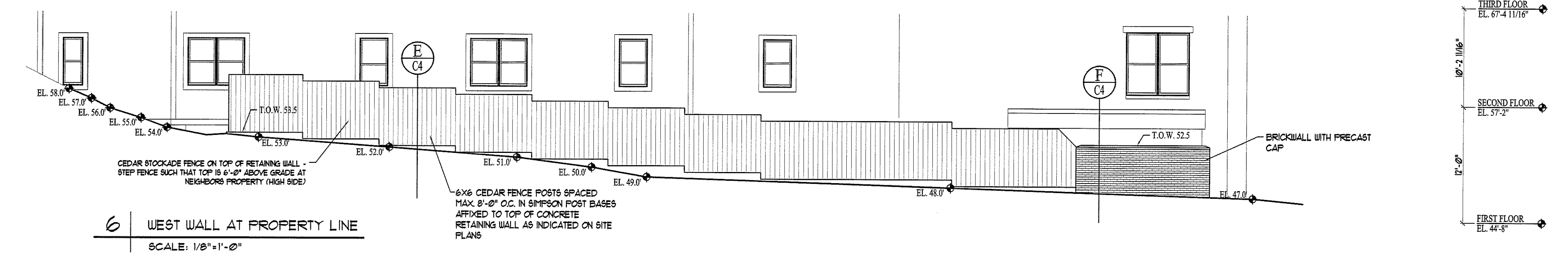
A2.02



4 NORTH ELEVATION
 SCALE: 1/8" = 1'-0"



5 WEST ELEVATION
 SCALE: 1/8" = 1'-0"



6 WEST WALL AT PROPERTY LINE
 SCALE: 1/8" = 1'-0"

GENERAL NOTES:
 1. ALL PRECAST JOINTS TO BE RAKED, 1/2" WIDTH, WITH BACKER-ROD AND CAULK
 2. BUILDING HEIGHT BY DEFINITION: 7 CORNER AVERAGE GRADE PLUS 54'-8" CONTRACT ZONE APPROVAL - 46.5' + 45.4' + 45.1' + 49.0' + 49.4' + 48.0' + 43.0' = 326.4' 326.4' / 7 = 46.63' AVERAGE
 46'-7 1/2" + 54'-8" = 101'-3 1/2" ALLOWABLE BUILDING HEIGHT

