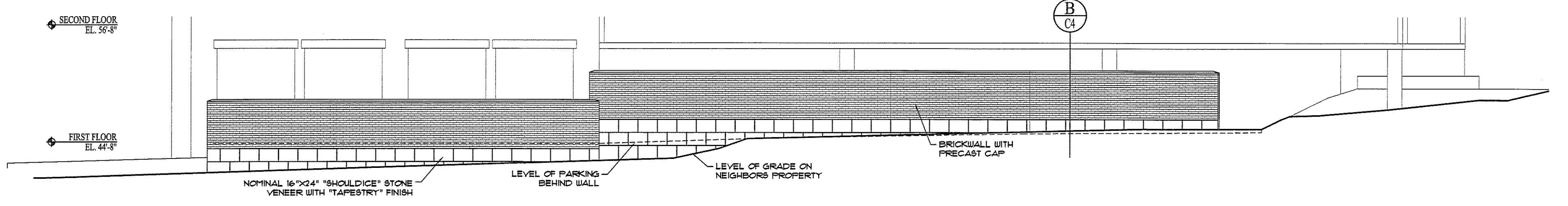


1 | SOUTH ELEVATION  
SCALE: 1/8"=1'-0"



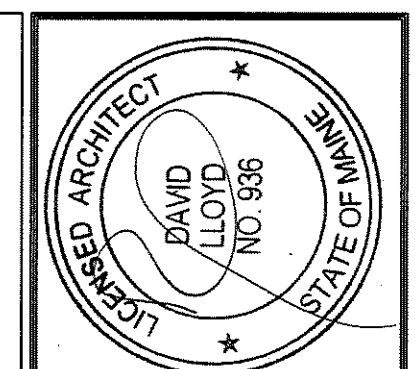
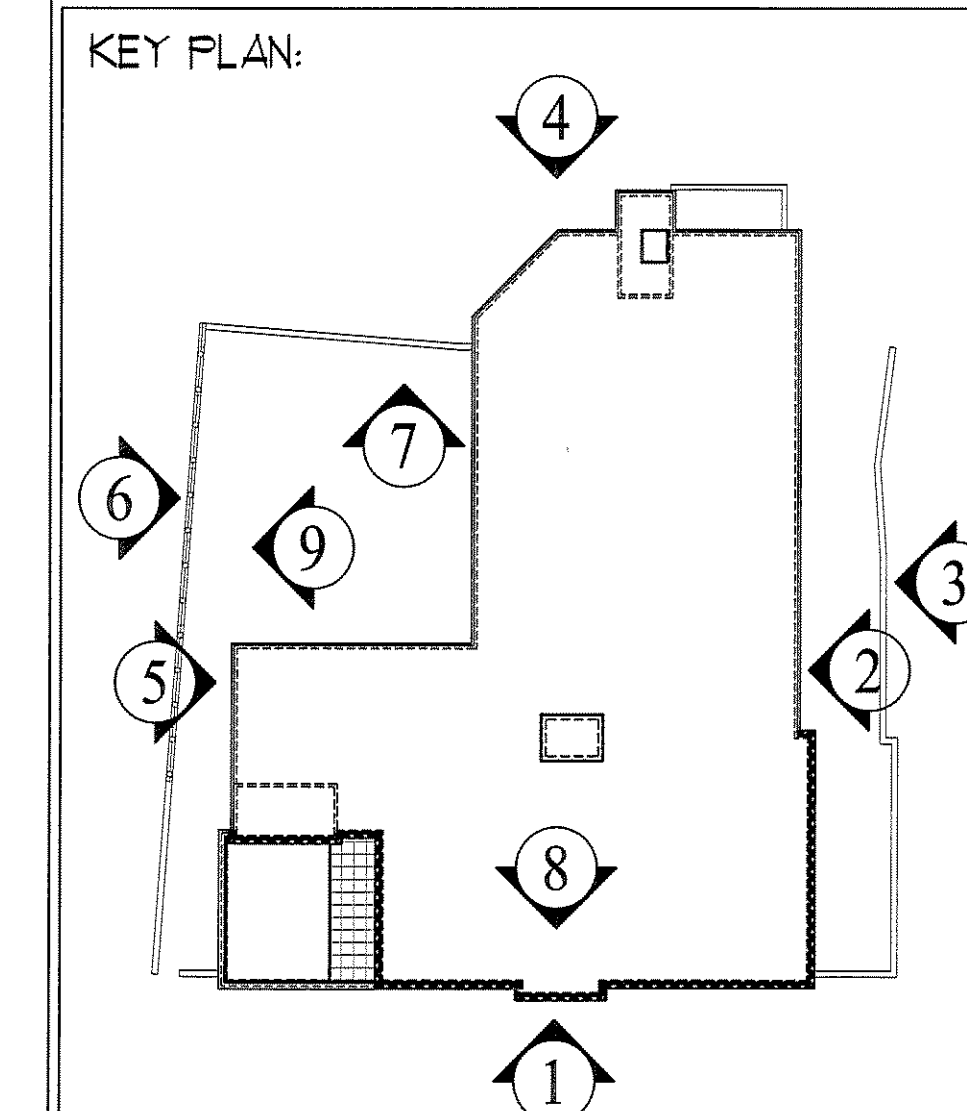
2 | EAST ELEVATION  
SCALE: 1/8"=1'-0"



3 | WEST ELEVATION - PROPERTY LINE BRICK WALL  
SCALE: 1/8"=1'-0"

- NOTE: GRANITE POSTS AND STEEL FENCING NOT SHOWN ON SOUTH ELEVATION FOR CLARITY - SEE C4 FOR LAYOUT AND DETAILS
- 6" CEMENT BOARD TRIM AT TOP AND SIDES
  - CEMENT TRIM AND SHADOW BOARD
  - 6" CEMENT TRIM CORNER BOARD
  - CEMENT CLAPBOARDS WITH 5" EXPOSURE
  - WINDOW WITH TRIM KIT
  - CEMENT BOARD TRIM AT BOTTOM EDGE OF CONCRETE DECK
  - WELDED STEEL RAILING - PAINTED

GENERAL NOTES:  
 1. ALL PRECAST JOINTS TO BE RAKED, 1/2" WIDTH, WITH BACKER-ROD AND CAULK  
 2. BUILDING HEIGHT BY DEFINITION: 7 CORNER AVERAGE GRADE PLUS 54'-8" CONTRACT ZONE APPROVAL - 46.5' + 45.4' + 45.1' + 49.0' + 49.4' + 48.0' + 43.0' = 326.4' 326.4' / 7 = 46.63' AVERAGE  
 46'-7 1/2" + 54'-8" = 101'-3 1/2" ALLOWABLE BUILDING HEIGHT



OWNER:  
 53 DANFORTH STREET, LP  
 C/O THE SZANTON COMPANY  
 ONE CITY CENTER - 4TH FLOOR  
 PORTLAND, ME 04101

ARCHETYPE, P.A.  
 ARCHITECTS  
 48 Union Wharf Portland, Maine 04101  
 (207) 772-6022 Fax (207) 772-4056

Project:  
 53 DANFORTH STREET  
 PORTLAND, MAINE

Revisions:
28 May 2008 - 50% MSHA Submittal
1 July 2008 - 90% MSHA Submittal
15 July 2008 - Pricing Set
25 July 2008 - 100% MSHA Submittal

Date: 28 May 2008  
 Scale: 1/8" = 1'-0"  
 BUILDING ELEVATIONS

A2.01