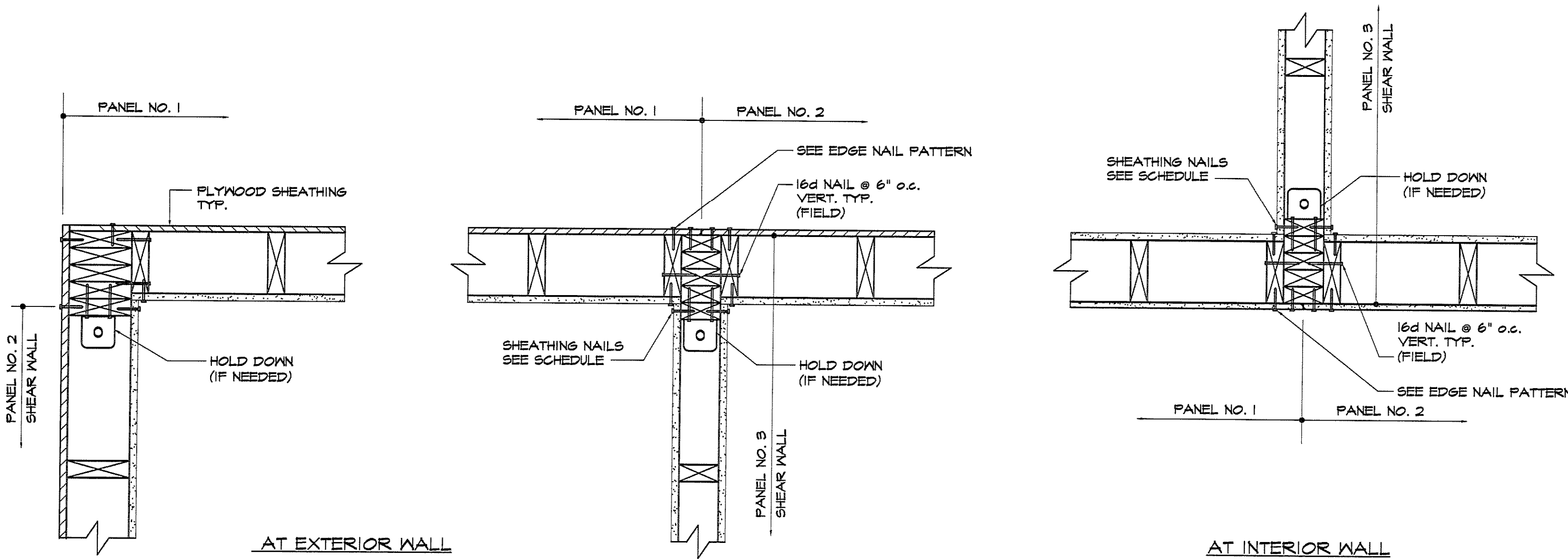


# SHEAR WALL SCHEDULE

| SW1 - 2-5/8" GYPSUM - ONE-SIDED UP TO 4th FLOOR<br>5/8" GYPSUM - ONE-SIDED ABOVE 4th FLOOR |  |  |                                  |  |                             | SW2 - 15/32" PLYWOOD ONE-SIDED |                             |             |            |                              |  | SW3 - 2-5/8" GYPSUM - ONE-SIDED UP TO 3rd FLOOR<br>5/8" GYPSUM - ONE-SIDED ABOVE 3rd FLOOR |  |                             |             |                             |             |            |  |  |                                  |  |                             |             |                             |             |
|--|--|--|----------------------------------|--|-----------------------------|--------------------------------|-----------------------------|-------------|------------|------------------------------|--|--|--|-----------------------------|-------------|-----------------------------|-------------|------------|--|--|----------------------------------|--|-----------------------------|-------------|-----------------------------|-------------|
| ROOF LEVEL   | SHEATHING NAILING & BLOCKING   |  | PLATE FASTENING & SHEAR BLOCKING |  | SHEAR WALL ANCHORAGE TYPE A |                                | SHEAR WALL ANCHORAGE TYPE B |             | ROOF LEVEL | SHEATHING NAILING & BLOCKING |  | PLATE FASTENING & SHEAR BLOCKING   |  | SHEAR WALL ANCHORAGE TYPE A |             | SHEAR WALL ANCHORAGE TYPE B |             | ROOF LEVEL | SHEATHING NAILING & BLOCKING   |  | PLATE FASTENING & SHEAR BLOCKING |  | SHEAR WALL ANCHORAGE TYPE A |             | SHEAR WALL ANCHORAGE TYPE B |             |
|  | EDGE NAIL TYPE & SPACING   |  | SHEAR BLOCK SPACING              |  | WALL CHORDS                 |                                | WALL CHORDS                 |             |            | EDGE NAIL TYPE & SPACING     |  | SHEAR BLOCK SPACING  |  | WALL CHORDS                 |             | WALL CHORDS                 |             |            | EDGE NAIL TYPE & SPACING   |  | SHEAR BLOCK SPACING              |  | WALL CHORDS                 |             | WALL CHORDS                 |             |
|  | FIELD NAIL TYPE & SPACING  |  | BOTTOM PLATE FASTENING           |  | LEFT CHORD                  | RIGHT CHORD                    | LEFT CHORD                  | RIGHT CHORD |            | FIELD NAIL TYPE & SPACING    |  | BOTTOM PLATE FASTENING   |  | LEFT CHORD                  | RIGHT CHORD | LEFT CHORD                  | RIGHT CHORD |            | FIELD NAIL TYPE & SPACING  |  | BOTTOM PLATE FASTENING           |  | LEFT CHORD                  | RIGHT CHORD | LEFT CHORD                  | RIGHT CHORD |
|  | BLOCKING   |  | @ 8'-0" O.C.                     |  |                             |                                |                             |             |            | BLOCKING                     |  | @ 8'-0" O.C.   |  |                             |             |                             |             |            | BLOCKING   |  | @ 8'-0" O.C.                     |  |                             |             |                             |             |
| 5th. LEVEL   | #6x1/4 TYPE "S" @ 4" o.c.  |  | @ 8'-0" O.C.                     |  | 2-2x4                       | 2-2x4                          | 2-2x4                       | 2-2x4       | 5th. LEVEL | BLOCKING                     |  | @ 8'-0" O.C.   |  | 2-2x6                       | 2-2x6       | 2-2x6                       | 2-2x6       | 5th. LEVEL | #6x1/4 TYPE "S" @ 4" o.c.  |  | @ 8'-0" O.C.                     |  | 2-2x4                       | 2-2x4       |                             |             |
|  | #6x1/4 TYPE "S" @ 4" o.c.  |  | @ 6'-0" O.C.                     |  | N/A                         | N/A                            | N/A                         | N/A         |            | BLOCKING                     |  | @ 4'-0" O.C.   |  | N/A                         | N/A         | CS22                        | CS22        |            | #6x1/4 TYPE "S" @ 4" o.c.  |  | @ 6'-0" O.C.                     |  | N/A                         | N/A         |                             |             |
| 4th. LEVEL   | #6x1/4 TYPE "S" @ 4" o.c.  |  | @ 4'-0" O.C.                     |  | CS18                        | CS18                           | N/A                         | N/A         | 4th. LEVEL | BLOCKING                     |  | @ 2'-0" O.C.   |  | N/A                         | N/A         | CS18                        | CS18        | 4th. LEVEL | #6x1/4 TYPE "S" @ 4" o.c.  |  | @ 4'-0" O.C.                     |  | CS20                        | CS20        |                             |             |
|  | BLOCKED  |  |                                  |  | CS18                        | CS18                           | N/A                         | N/A         |            | BLOCKED                      |  |  |  | N/A                         | N/A         | CS18                        | CS18        |            | #6x1/4 TYPE "S" @ 4" o.c.  |  | @ 4'-0" O.C.                     |  | CS20                        | CS20        |                             |             |
| 3rd. LEVEL   | BASE PLY #6x1/4 TYPE "S" @ 4" o.c.<br>FACE PLY #6x2 TYPE "S" @ 7" o.c. |  | @ 2'-0" O.C.                     |  | 2-2x4                       | 2-2x4                          | 2-2x4                       | 2-2x4       | 3rd. LEVEL | BLOCKED                      |  | @ 2'-0" O.C.   |  | 2-2x6                       | 2-2x6       | 2-2x6                       | 2-2x6       | 3rd. LEVEL | BASE PLY #6x1/4 TYPE "S" @ 4" o.c.<br>FACE PLY #6x2 TYPE "S" @ 7" o.c. |  | @ 2'-0" O.C.                     |  | CS16                        | CS16        |                             |             |
|  | BLOCKED  |  |                                  |  | CS14                        | CS14                           | N/A                         | N/A         |            | BLOCKED                      |  |  |  | N/A                         | N/A         | CS14                        | CS14        |            | #6x1/4 TYPE "S" @ 4" o.c.  |  | @ 2'-0" O.C.                     |  | CS16                        | CS16        |                             |             |
| 2nd. LEVEL   | BASE PLY #6x1/4 TYPE "S" @ 4" o.c.<br>FACE PLY #6x2 TYPE "S" @ 7" o.c. |  | @ 2'-0" O.C.                     |  | 2-2x4                       | 2-2x4                          | 2-2x4                       | 2-2x4       | 2nd. LEVEL | BLOCKED                      |  | @ 2'-0" O.C.   |  | 2-2x6                       | 2-2x6       | 4-2x6                       | 4-2x6       | 2nd. LEVEL | BASE PLY #6x1/4 TYPE "S" @ 4" o.c.<br>FACE PLY #6x2 TYPE "S" @ 7" o.c. |  | @ 2'-0" O.C.                     |  | 2-2x4                       | 2-2x4       |                             |             |
|  | BLOCKED  |  | HLTI XDNI-62-P8 @ 6" O.C.        |  | HDU5-SD525                  | HDU5-SD525                     | HDU2-SD525                  | HDU2-SD525  |            | BLOCKED                      |  | HLTI XDNI-62-P8 @ 6" O.C.  |  | HDU2-SD525                  | HDU2-SD525  | HDU1-SD525                  | HDU1-SD525  |            | BLOCKED  |  | HLTI XDNI-62-P8 @ 6" O.C.        |  | HDU4-SD525                  | HDU4-SD525  |                             |             |

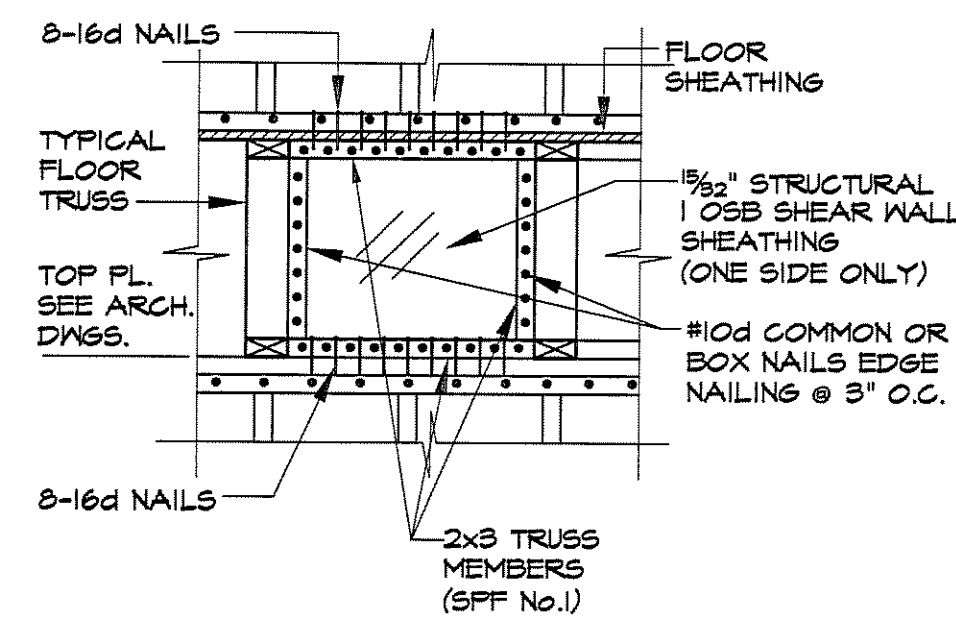
- SHEAR WALL SCHEDULE NOTES:**
- ALL HOLDDOWNS, FLOOR TIES AND FASTENERS BY SIMPSON OR EQUAL. FOR ADDITIONAL REQUIREMENTS SEE MANUFACTURERS RECOMMENDATIONS.
  - PLATE FASTENING CONTINUOUS AT 1st FLOOR.
  - IF SEGMENT OF TWO SIDED GYPSUM SHEAR WALL IS EXTERIOR, THE EXTERIOR SIDE OF THE SEGMENT TO BE 5/8" PLYWOOD WITH 8d NAILS AT 6" O.C. ON EDGES AND IN FIELD, BLOCKED.
  - PROVIDE 2-2x4 SOLID BLOCKING THRU FLOOR CAVITIES AT CHORD LOCATIONS.



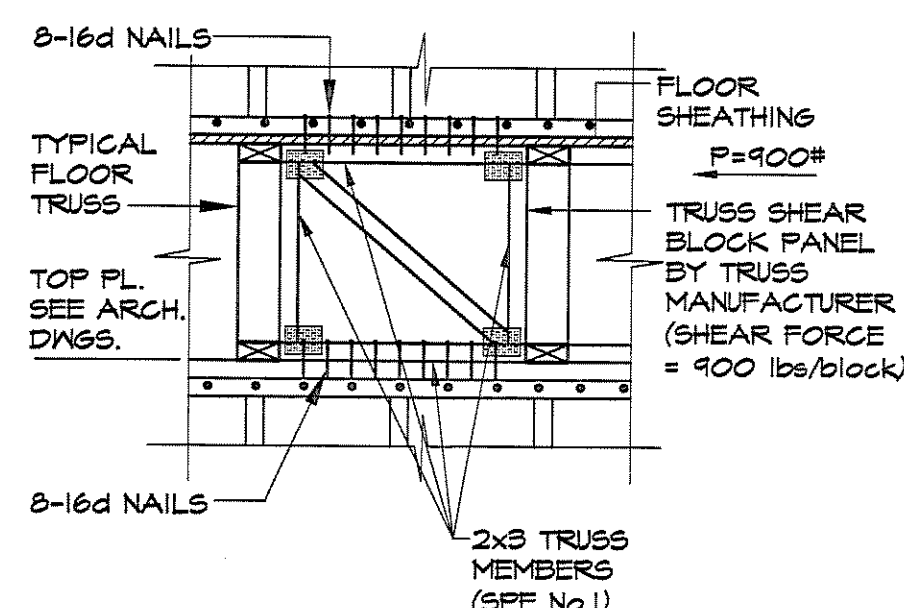
### TYPICAL WALL DETAILS

- INDICATES FIELD APPLIED 16d NAIL @ 6" o.c. VERT.
- INDICATES FIELD APPLIED 8d NAIL @ 6" o.c. VERT.

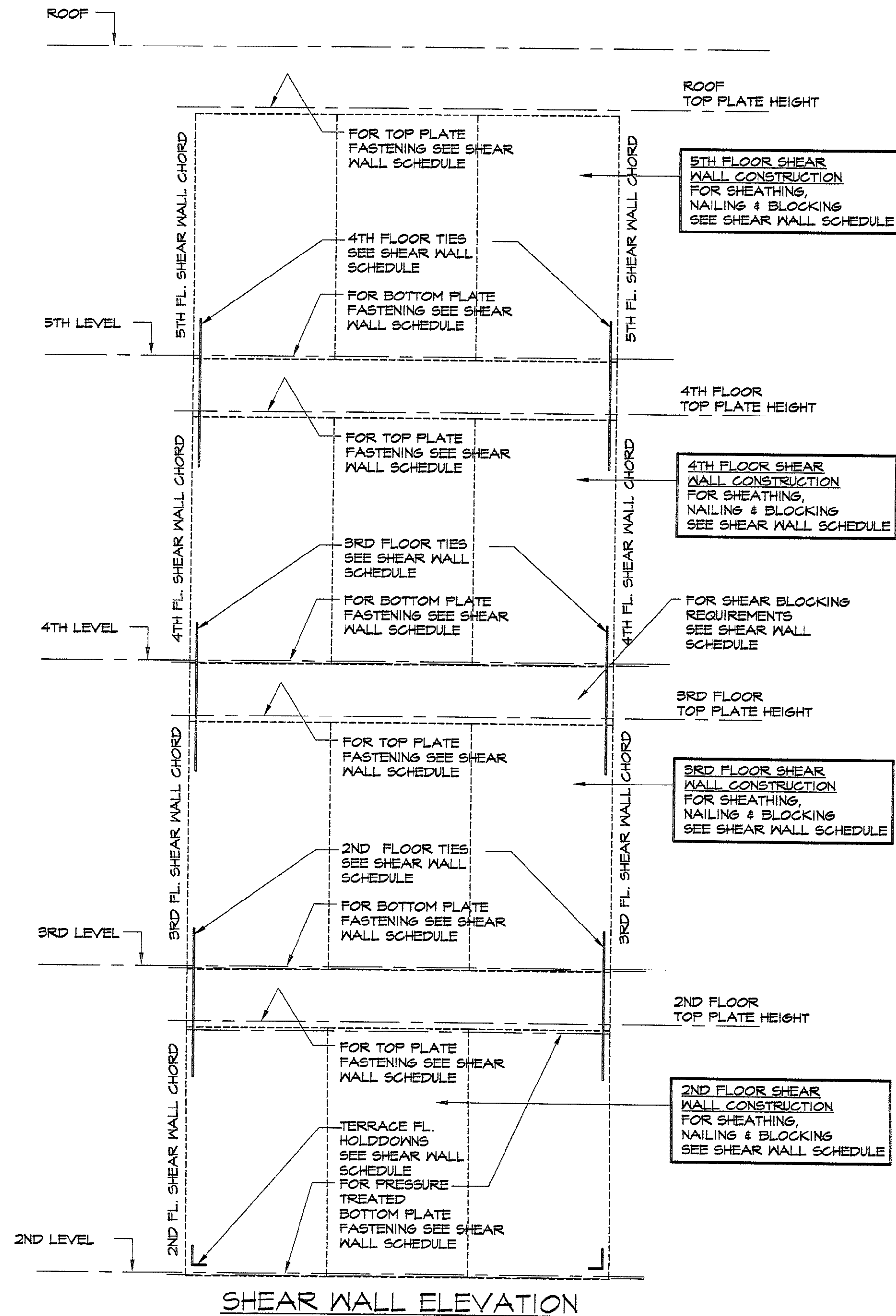
NOTE:  
SHOP NAILS NOT SHOWN FOR CLARITY



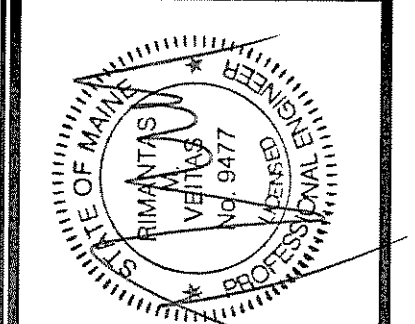
TYPICAL PLYWOOD SHEAR BLOCK PANEL DETAIL  
OPTION #1



TYPICAL TRUSS SHEAR BLOCK PANEL DETAIL  
OPTION #2



SHEAR WALL ELEVATION



OWNER:  
**53 DANFORTH STREET, LP**  
C/O THE SZANTON COMPANY  
ONE CITY CENTER - 4TH FLOOR  
PORTLAND, ME 04101

**ARCHETYPE, P.A.**  
ARCHITECTS  
48 Union Wharf Portland, Maine 04101  
(207) 772-6022 Fax (207) 772-4056

Project:  
**53 DANFORTH**  
53 DANFORTH STREET  
PORTLAND, MAINE

Revisions:  
28 May 2008 - 50% MSHA Submittal  
01 July 2008 - 90% MSHA Submittal  
15 July 2008 - Pricing Set  
25 July 2008 - 100% MSHA Submittal

Date: 28 May 2008  
Scale: 1/8" = 1'-0"  
**SHEAR WALL SCHEDULE & DETAILS**

**S3.03**

**VEITAS and VEITAS**  
engineers

639 Granite Street, Suite 101  
Braintree, Massachusetts 02184  
TEL (781)849-2863 FAX (781)849-2065