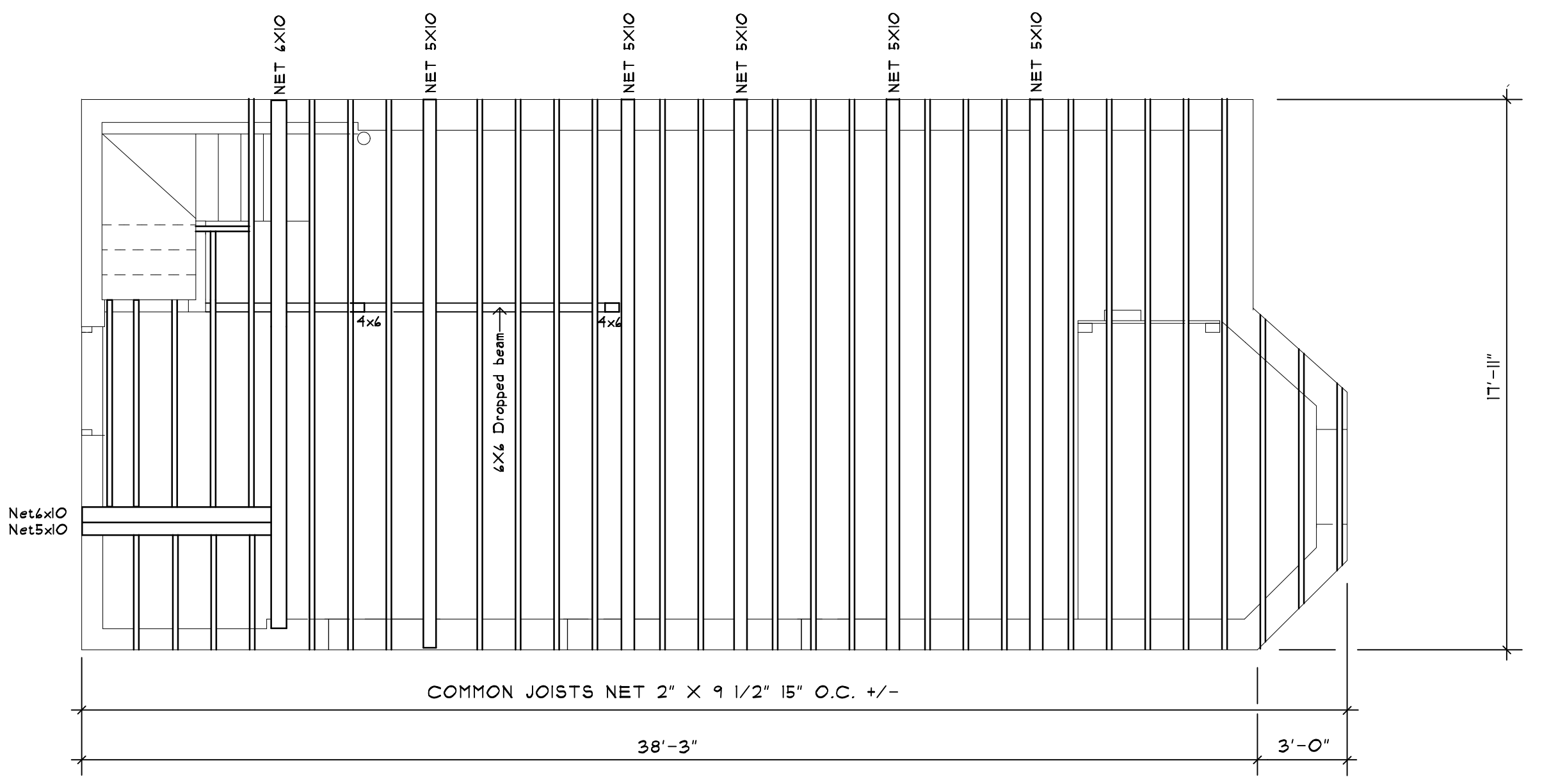


Remodeled Basement Plan
1/4"=1'-0"

LEGEND		ELECTRICAL	
S	SWITCH	SPOTLIGHT	
S ₃	3-WAY SWITCH	FAN/LIGHT COMB.	
S ₄	4-WAY SWITCH	SMOKE DETECTOR	
S _{WP}	SWITCH WEATHER PROOF	PORCELAIN FIXTURE	
⊖ _s	SWITCH/MONOPLEX OUTLET	DISCONNECT SWITCH	
S _{DM}	DIMMER SWITCH	CEILING FAN	
S _T	SWITCH W/ TIMER	THERMOSTAT	
⊖ _{WP}	DUPLEX RECEPTACLE WEATHER PROOF	BELL/PUSH BUTTON	
⊖	DUPLEX RECEPTACLE SPLIT WIRED	BELL	
⊖ ₄	QUADRUPLEX RECEPTACLE		
⊖	DUPLEX RECEPTACLE		
⊖ ₂₄₀	240 VOLT		
⊖ _{DW}	SPECIAL PURPOSE CONNECTION		
⊖	DUPLEX FLOOR OUTLET		
⊖	TELEPHONE		
⊖	CABLE TV JACK		
⊖	WALL JUNCTION BOX		
⊖	CEILING JUNCTION BOX		
⊖	OVERHEAD FIXTURE		
⊖	RECESSED FIXTURE		
⊖	WALL FIXTURE		



Basement Reflected Ceiling Plan
1st Floor Framing Plan As-Built
1/4"=1'-0"

6 Meeting House Lane, WEST BATH, MAINE 04530
JAMES HOARE Architectural Design
Phone (201) 443-6251 cell 151-2134

REVISIONS

ALEX FISHER RESIDENCE
67 HIGH STREET
PORTLAND, MAINE

DRAWINGS THIS SHEET
Remodeled Basement Plan
Bsmt Reflected Ceiling Plan /
1st Floor Framing Plan As-Built

DATE	
Number	
Drawn By	JH
Checked By	

A-1

8/3/2012