

Markup Legend	
Delete Line	
Add Line	
Add Tee	
Add Elbow	
Add Coupling	
Add Head	
Delete Head	
Move Head	

SPRINKLER SYMBOL DEFINITION	
	XXX-XX(s1)(s2)
	SLOPED CEILING MAX. SLOPE OF 8:12 (33.7°) PITCH (MAY NOT APPLY)
	SLOPED CEILING MAX. SLOPE OF 4:12 (18.4°) PITCH (MAY NOT APPLY)
	MAXIMUM SPACING (TYP)
	SPRINKLER MODEL (TYP)
	HEAD SYMBOL (TYP)

COLOR/LINETYPE LEGEND	
	BLUE LINES= FEED TO FIXTURES (BATH, SHOWER, ETC.).
	GREEN LINES= INTERLEVEL CONNECTIONS.
	BLACK LINES= SPRINKLER HEAD TO SPRINKLER HEAD.
	— = 1/2" PIPE SIZE
	— = 3/4" PIPE SIZE
	— = 1" PIPE SIZE
	— = 1-1/4" PIPE SIZE
	— = 2" PIPE SIZE

**Multipurpose Fire Safety Systems**

The Uponor Residential Fire Safety System is a residential fire protections system installed in combination with the cold side of the domestic potable water system. Only licensed contractors trained by Uponor can install this system.

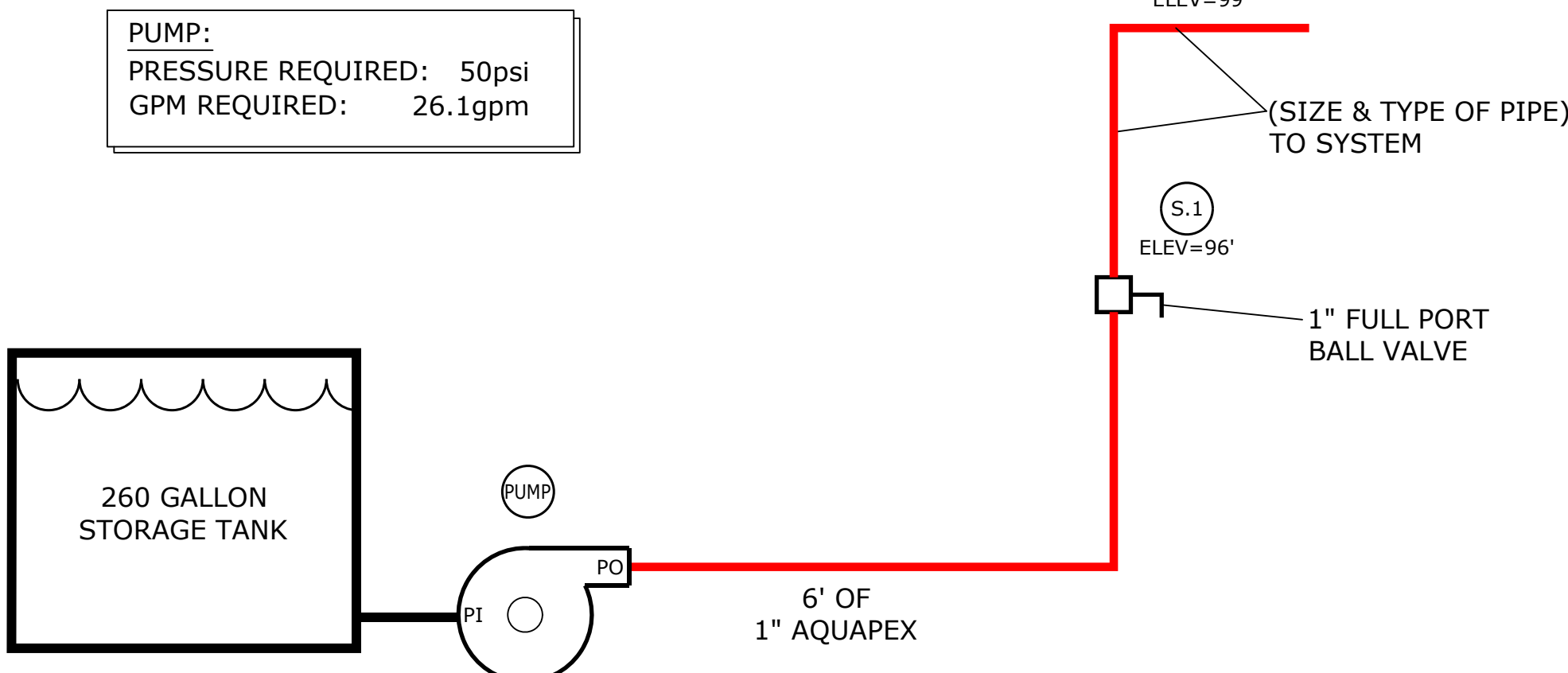
**What to do if Changes are Required**

If any features or obstructions require the addition or deletion of sprinkler heads, or significant relocation of sprinkler heads, contact the Uponor Design Department to determine if observed changes require a redesign (888.594.7726).

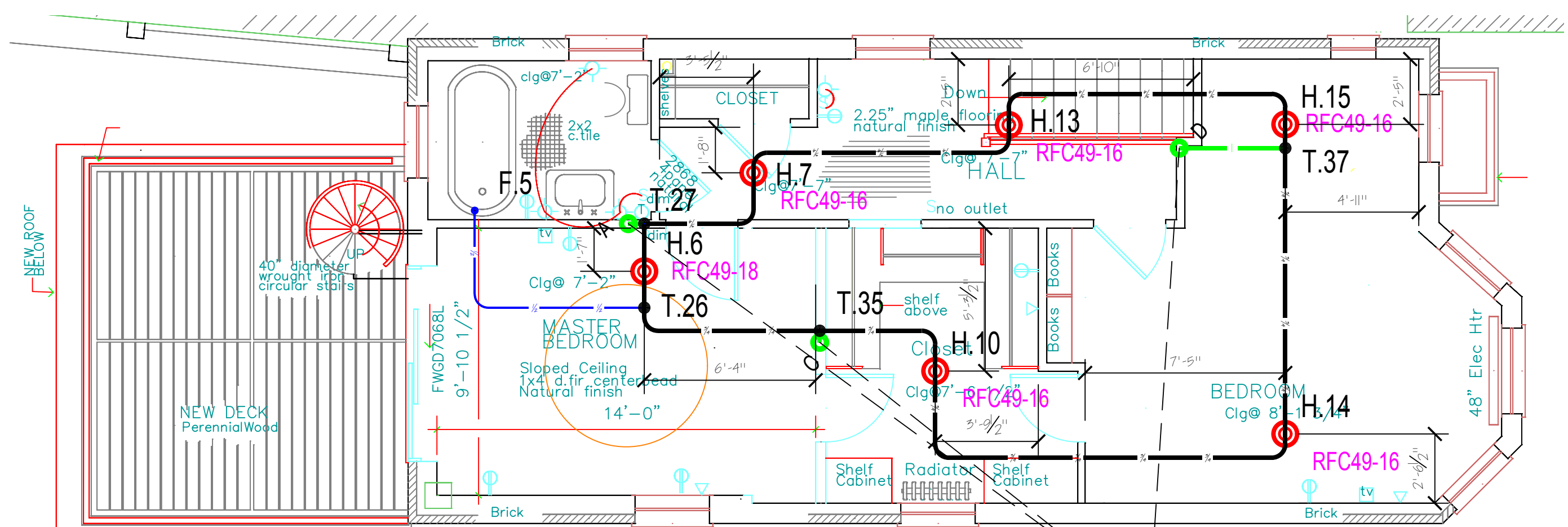
MOST HYDRAULICALLY REMOTE HEADS			
HEAD #	GPM	PRESSURE REQ'D AT S.1	
1 HEAD H.6	17	34.57	
2 HEAD H.16 & H.17	26.1036	46.81	

7	1st Floor
6	2nd Floor
6	Basement
19	TOTAL

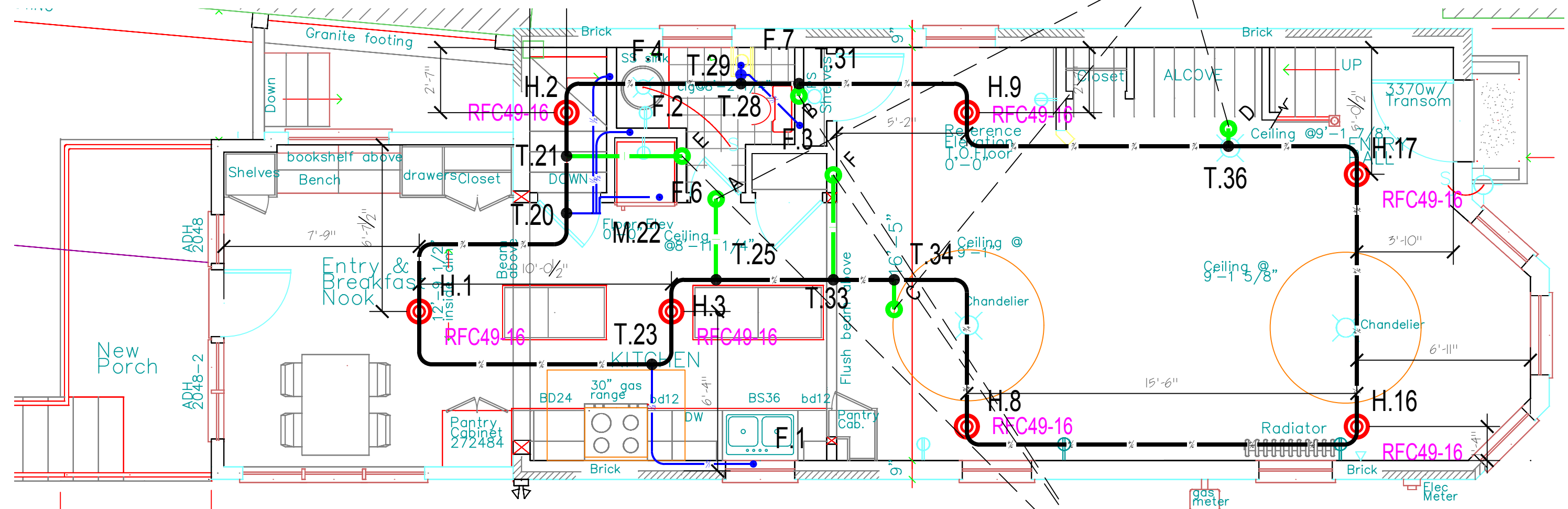
- ① --- 18 RELIABLE Model RFC49RFC49 Concealed Pendent Sprinkler K=4.9, 165F°, 3/8" Orifice, Maximum Spacing 16"x16" Sprinkler head demand: 13 gpm @ 7.04
- ② --- 1 RELIABLE Model RFC49RFC49 Concealed Pendent Sprinkler K=4.9, 165F°, 3/8" Orifice, Maximum Spacing 18"x18" Sprinkler head demand: 17 gpm @ 12.03



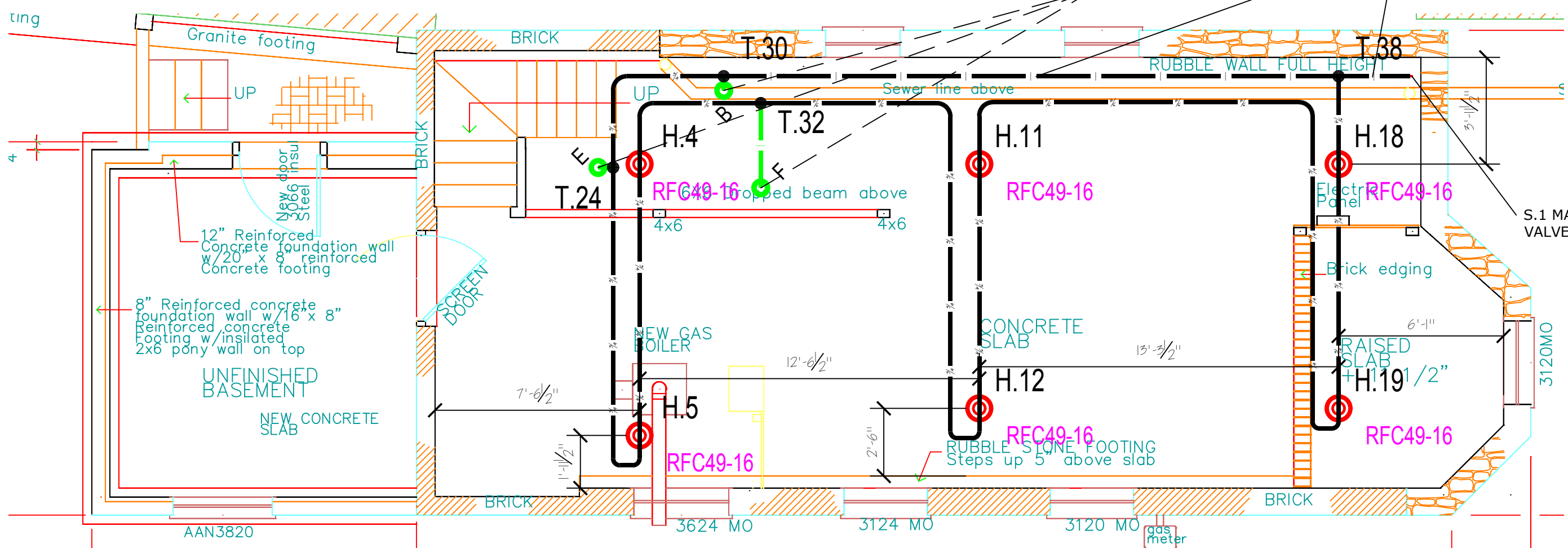
**4 WATER SERVICE DETAIL**  
F100 NTS



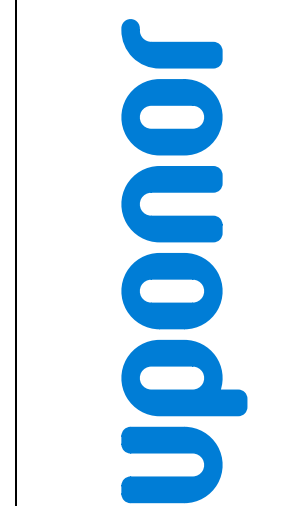
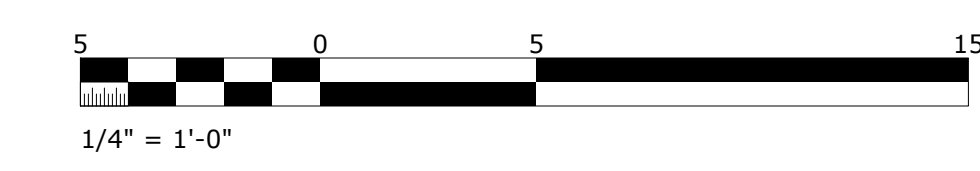
**3 SECOND FLOOR**  
F100 1/4" = 1'-0"



**2 FIRST FLOOR**  
F100 1/4" = 1'-0"



**1 BASEMENT LEVEL**  
F100 1/4" = 1'-0"



**TECHNICAL SERVICES** - DESIGN DEPARTMENT  
21900 DODD BLVD., LAKEVILLE, MN 55044  
T 888.594.7726 F 952.997.1731  
WWW.UPONOR.COM  
WWW.UPONOR-USA.COM

**DISCLAIMER**  
THIS SERIES OF PLUMBING, HYDRONIC HEATING/COOLING, SNOW AND MELTING, AND/OR FIRE SAFETY SYSTEMS DRAWINGS HAVE BEEN DESIGNED BY UPPONOR INC. TECHNICAL SERVICES. PROFESSIONAL DESIGNERS AND/OR ENGINEERS HAVE REVIEWED AND APPROVED THESE DRAWINGS. THEY HAVE BEEN PREPARED TO MEET PROFESSIONAL STANDARDS OF DESIGN AND CONSTRUCTION. BEFORE STARTING ALL WORK ASSOCIATED WITH THIS DESIGN, IT IS MANDATORY TO MAKE A CHECK FOR ANY CHANGES TO THE DESIGN. ANY CHANGES TO THE DESIGN AND/OR FIRE CODES USED, REPORT ANY ERRORS AND/OR DESIGN CHANGES TO UPPONOR, INC. TECHNICAL SERVICES - DESIGN DEPARTMENT TO DETERMINE IF THE DESIGN REQUIRES REVISION. IF ERRORS AND/OR CHANGES ARE FOUND, THEY WILL BE CORRECTED AND THE DESIGN WILL FUNCTION IN ACCORDANCE WITH ALL APPLICABLE CODES AND REGULATIONS. THERE IS NO WARRANTY WRITTEN, EXPRESSED OR IMPLIED FOR DAMAGES THAT MAY RESULT FROM THE APPLICATION AND INSTALLATION OF THE SYSTEM. UPPONOR INC. ACCEPTS NO LIABILITY FOR REINTERPRETATION OF THESE DRAWINGS. SALES REP.

**FISHER RESIDENCE**  
67 HIGH ST  
PORTLAND, ME 04103

**SHEET DESCRIPTION**  
BASEMENT, FIRST & SECOND

**SHEET NUMBER**  
**F100**

REVISIONS	
NO.	DESCRIPTION